

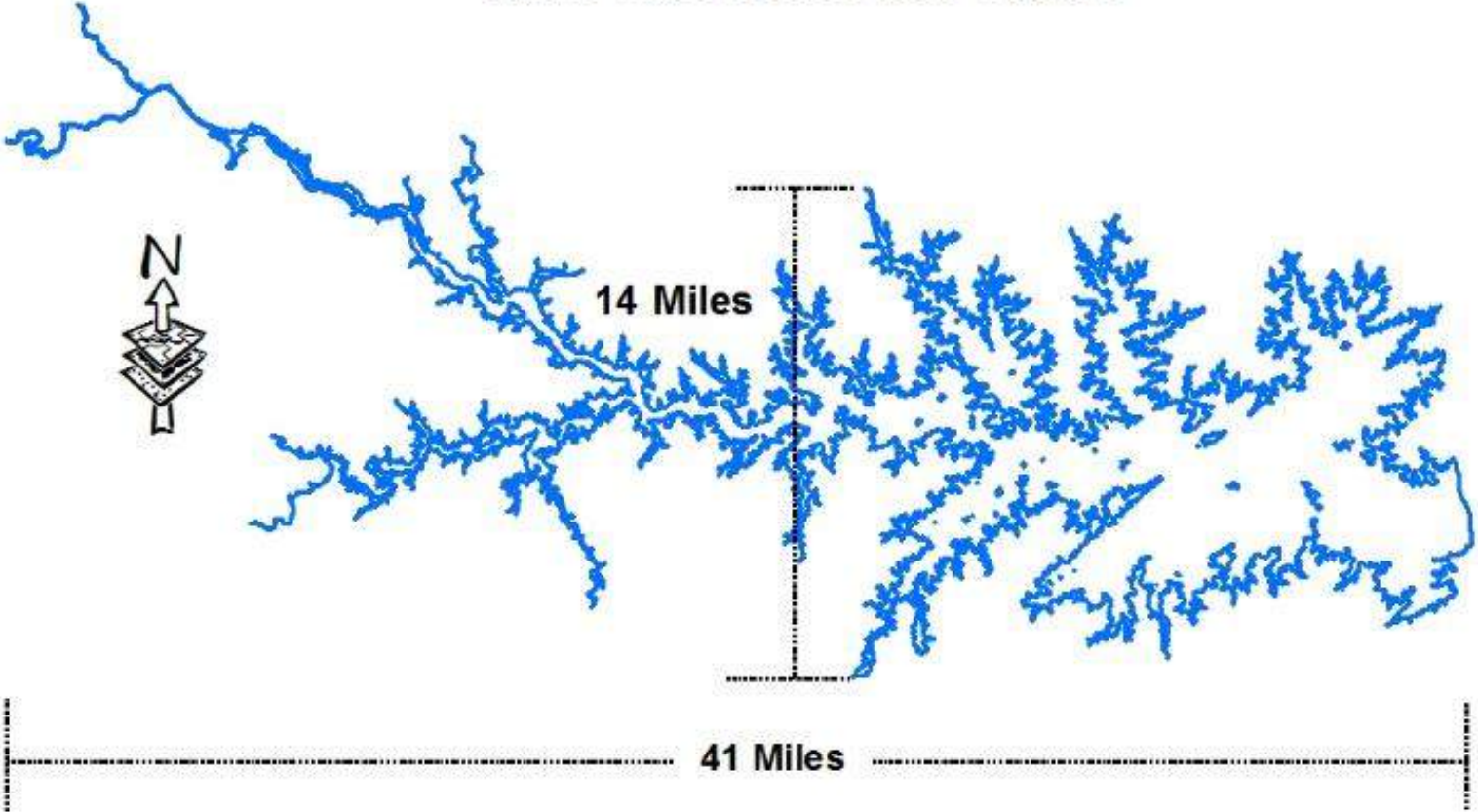


# Dominion Energy Lake Murray

**Brandon McCartha**  
**Senior Lake Management Representative**

# Lake Murray

650 Miles of Shoreline  
763 Billion Gallons of Water Storage  
48,239 Surface Acres or 78 Sq Miles



# Lake Management

- Dominion Energy Shoreline Management Plan (SMP) was developed in 1975 with the Federal Power Commission, now the Federal Energy Regulatory Commission (FERC), to ensure compliance with the licensing requirement for the Saluda Hydro Project.
- FERC is the Federal Agency responsible for the overseeing, maintenance and operation of the license for the Saluda Hydro Project.
- Dominion Energy operates its shoreline permitting activities under a general permit issued by the US Corps of Engineers and the S. C. Department of Health and Environmental Control.
- This permit authorizes Dominion Energy to be the residential permitting agency on Lake Murray.
- Commercial requests are submitted and approved by DHEC, Corps of Engineers, and FERC.

# Shoreline Permitting

- Docks
- Dock Modifications
- Boat Lifts
- PWC Lifts
- Boat Ramps
- Marine Rails
- Water Removal (Irrigation Only)
- Limited Brushing
- Erosion Control- (Rip Rap, Retaining Walls)
- Excavations
- Geothermal



# Permitting Examples

# Prohibited Activities

- Boathouses
- Patios
- Shelters
- Fences
- Boathouses
- Patios
- Shelters
- Fences

(no fixed or land-based structures)



No Boathouses

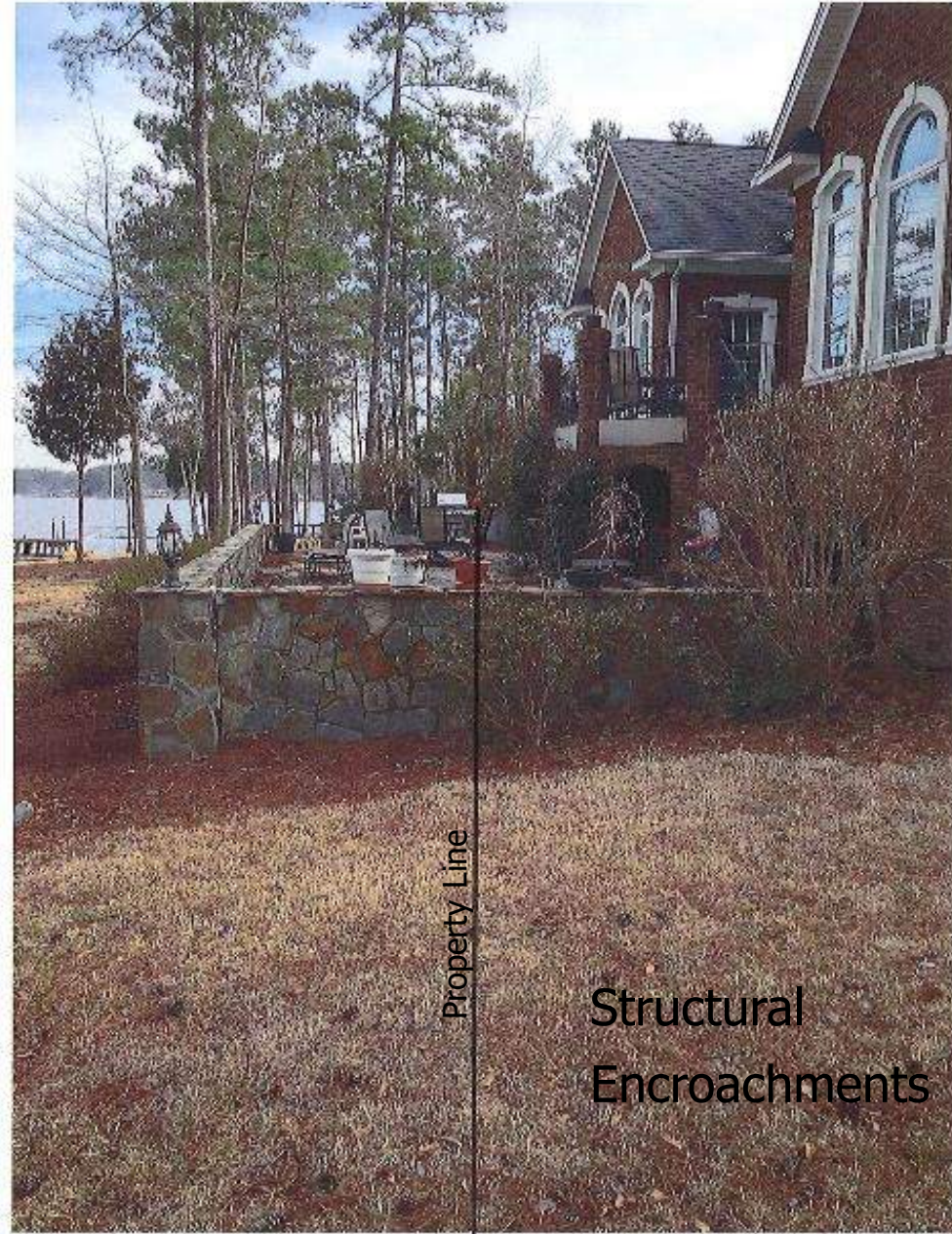


NO SAND



No Barbecues





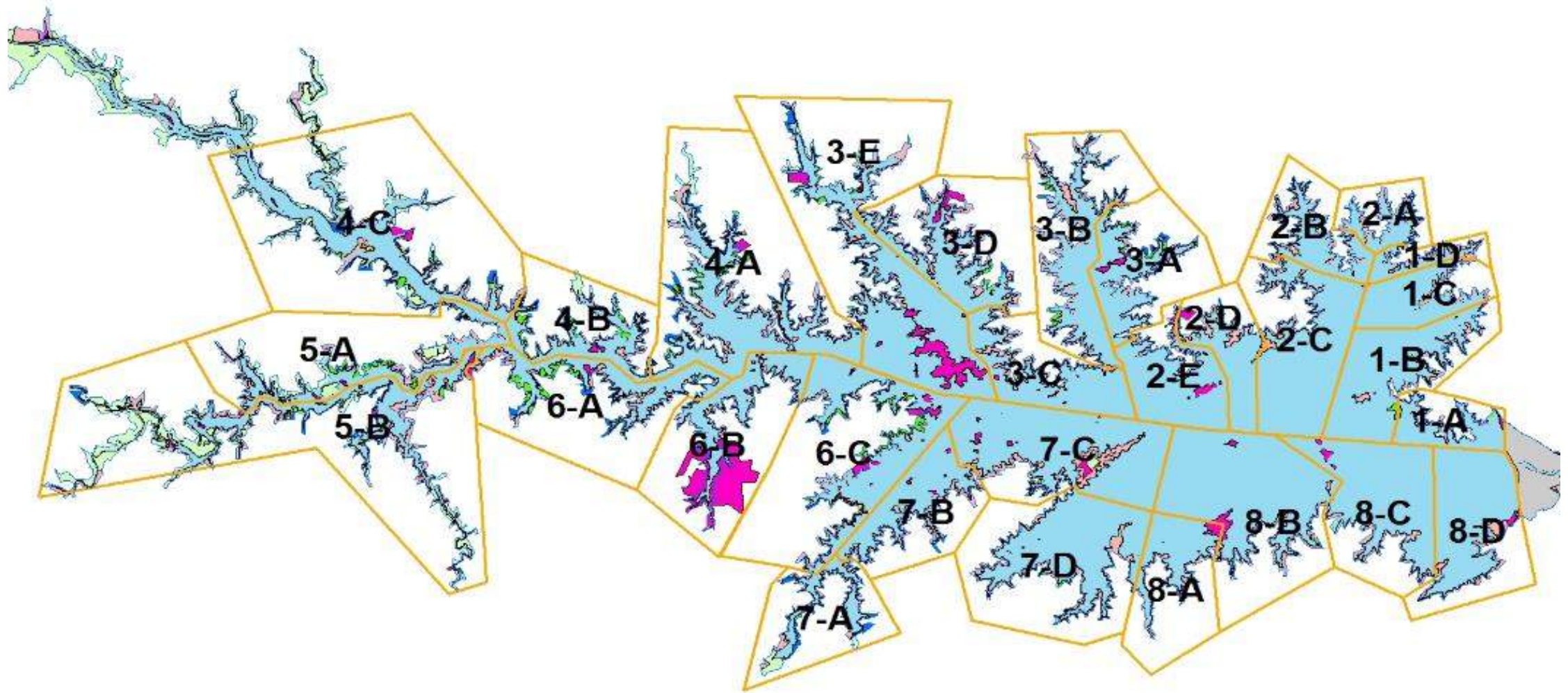
Property Line

Structural  
Encroachments

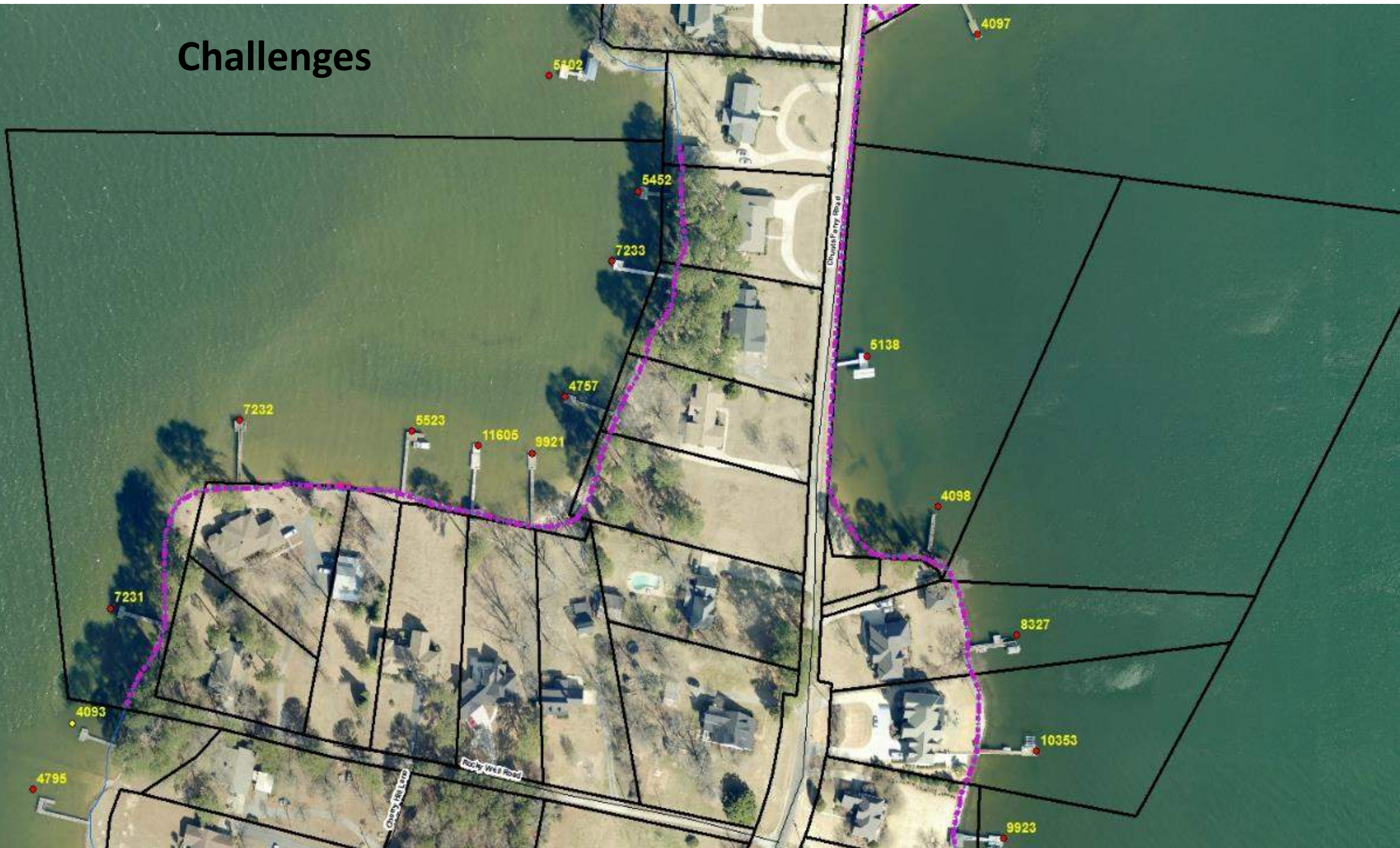
Blackburn Rd

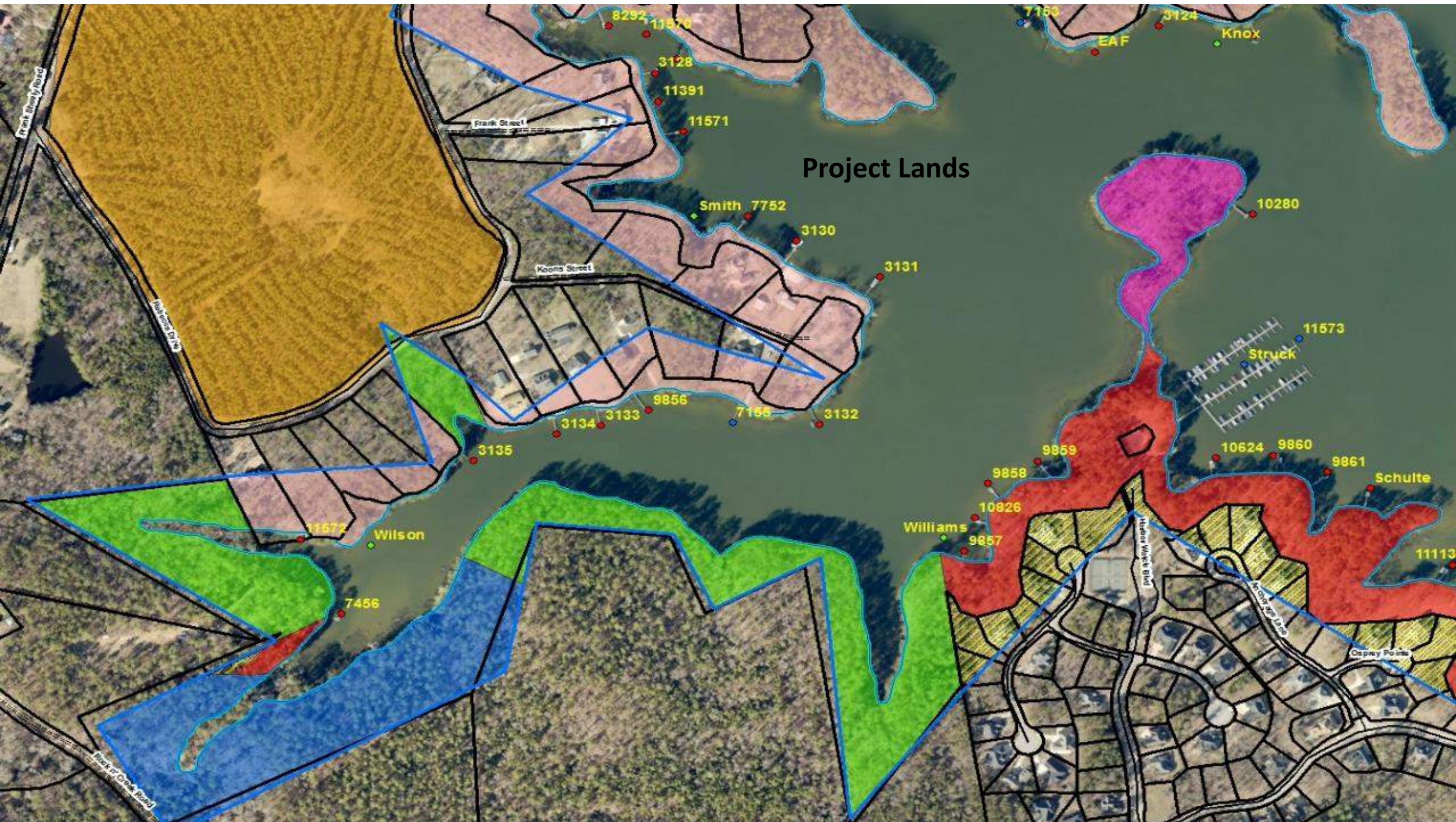


# Classification and Work Zone Map



# Challenges





Questions?

