

# Saluda River Basin Planning - Public Meeting #2



**1. Welcome and Opening Remarks** – Dr. Jeff Allen, Clemson University

**2. Why We Are Here** – Ken Rentiers, SCDNR, Deputy Director of the Land, Water & Conservation Division

*Why is water planning important to all South Carolina citizens?*

*Where are we in the planning process, how did we get here, and where are we going?*

**3. Saluda River Basin Planning** – Alex Pellett, SCDNR, Hydrologist

*What is a River Basin Plan and how will the Saluda River Basin Plan be developed?*

**4. Next Steps for Saluda River Basin Planning** – Alex Pellett, SCDNR

*What is the schedule for planning activities in the Saluda basin?*

*How can stakeholders apply to be on the Saluda River Basin Council?*

*What are other ways stakeholders can be involved?*

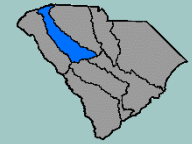
**5. Comments on Broad River Basin Planning** – Ken Tuck, Chairman of the Broad River Basin Council (RBC)

*The Broad RBC Chairman will share his perspective on State water planning and his experience with the Broad basin planning process.*

**6. Comments from the Planning Process Advisory Committee and Q&A Session** – moderated by Dr. Jeff Allen, Clemson University.

*PPAC members will share their perspectives on water planning and along with SCDNR address any comments or questions about the Planning Framework and Saluda basin planning activities.*

*Let us hear from you. We welcome your questions and feedback.*



# Saluda River Basin Planning - Public Meeting #2



1. Welcome and Opening Remarks – Dr. Jeff Allen, Clemson University
2. **Why We Are Here – Ken Rentiers, SCDNR, Deputy Director of the Land, Water & Conservation Division**

***Why is water planning important to all South Carolina citizens?***

***Where are we in the planning process, how did we get here, and where are we going?***

3. Saluda River Basin Planning – Alex Pellett, SCDNR, Hydrologist

*What is a River Basin Plan and how will the Saluda River Basin Plan be developed?*

4. Next Steps for Saluda River Basin Planning – Alex Pellett, SCDNR

*What is the schedule for planning activities in the Saluda basin?*

*How can stakeholders apply to be on the Saluda River Basin Council?*

*What are other ways stakeholders can be involved?*

5. Comments on Broad River Basin Planning – Ken Tuck, Chairman of the Broad River Basin Council (RBC)

*The Broad RBC Chairman will share his perspective on State water planning and his experience with the Broad basin planning process.*

6. Comments from the Planning Process Advisory Committee and Q&A Session – moderated by Dr. Jeff Allen, Clemson University.

*PPAC members will share their perspectives on water planning and along with SCDNR address any comments or questions about the Planning Framework and Saluda basin planning activities.*

*Let us hear from you. We welcome your questions and feedback.*

# SC State Water Planning

Ken Rentiers

Deputy Director

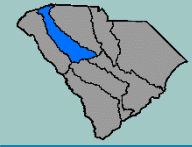
S.C. Department of Natural Resources  
Land, Water and Conservation Division



Saluda River Basin Planning – Public Meeting #2

Columbia, SC

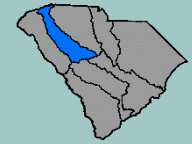
November 3<sup>rd</sup>, 2022



# Why Are We Here?

*“The effective management of South Carolina’s water resources is beyond the scope of any one agency or organization and will require cooperation and shared responsibility among federal, state, and local agencies, as well as public and private parties.”*  
- South Carolina Water Plan (2004)





# Water Use in South Carolina



**Fishing**



**Energy  
Production**



**River  
Recreation**



**Wastewater  
dischargers**



**Public Water**



**Fish and  
Wildlife**

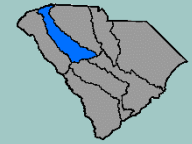


**Manufacturing/  
Industry**



**Agriculture**



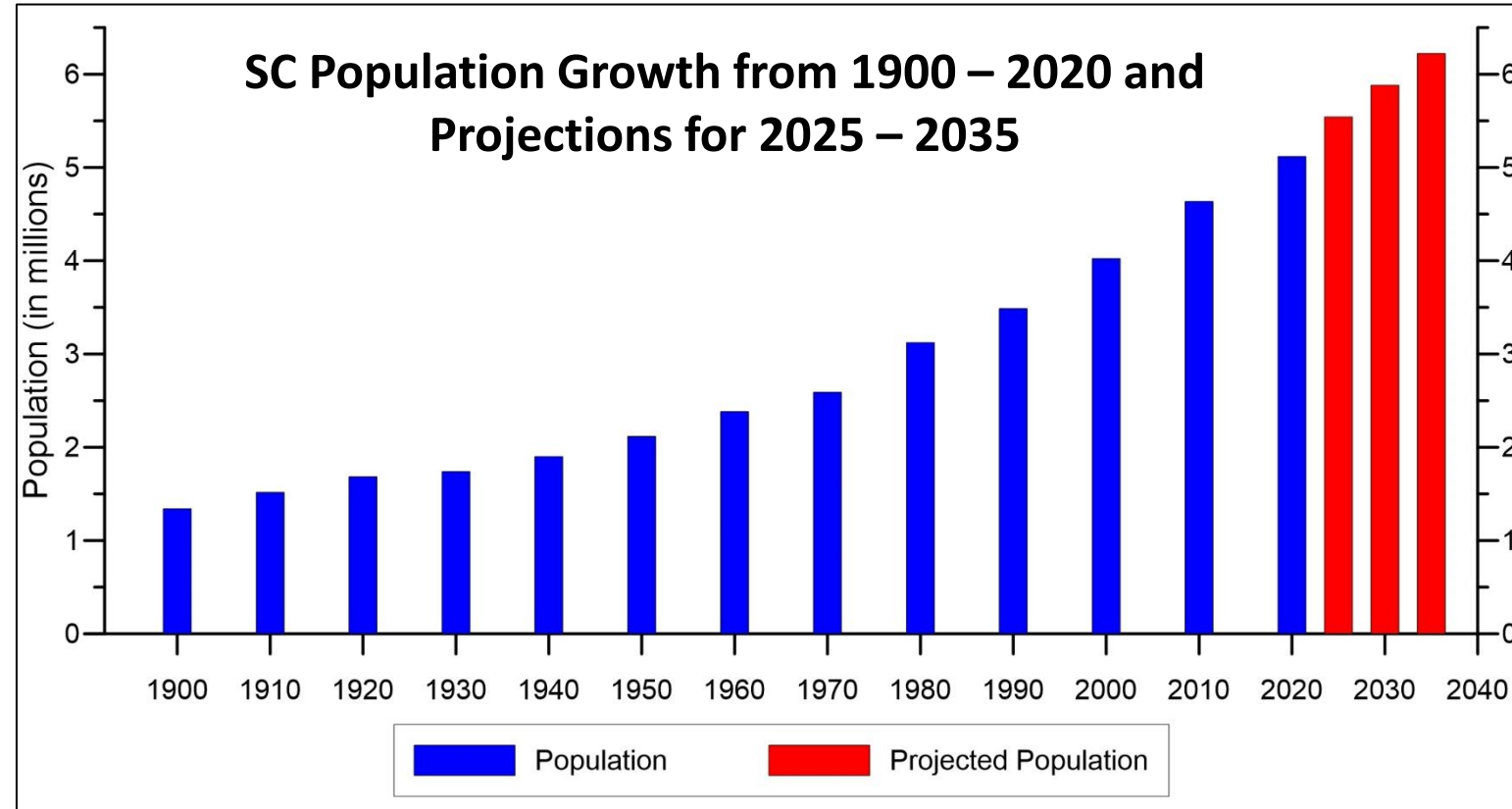


# Why State Water Planning?

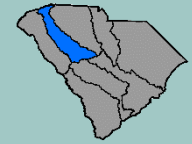


## Population Growth → Increased Water Demand

- From 1990 – 2020, SC population increased from **3.5** to **5.1** million and is forecasted to increase to **6.2** million by 2035.
- Our growing population may increase future water demands and may increase competition for our water supplies.



Data from the SC Office of Revenue and Fiscal Affairs, 2021, and U.S. Census Bureau, 2021.

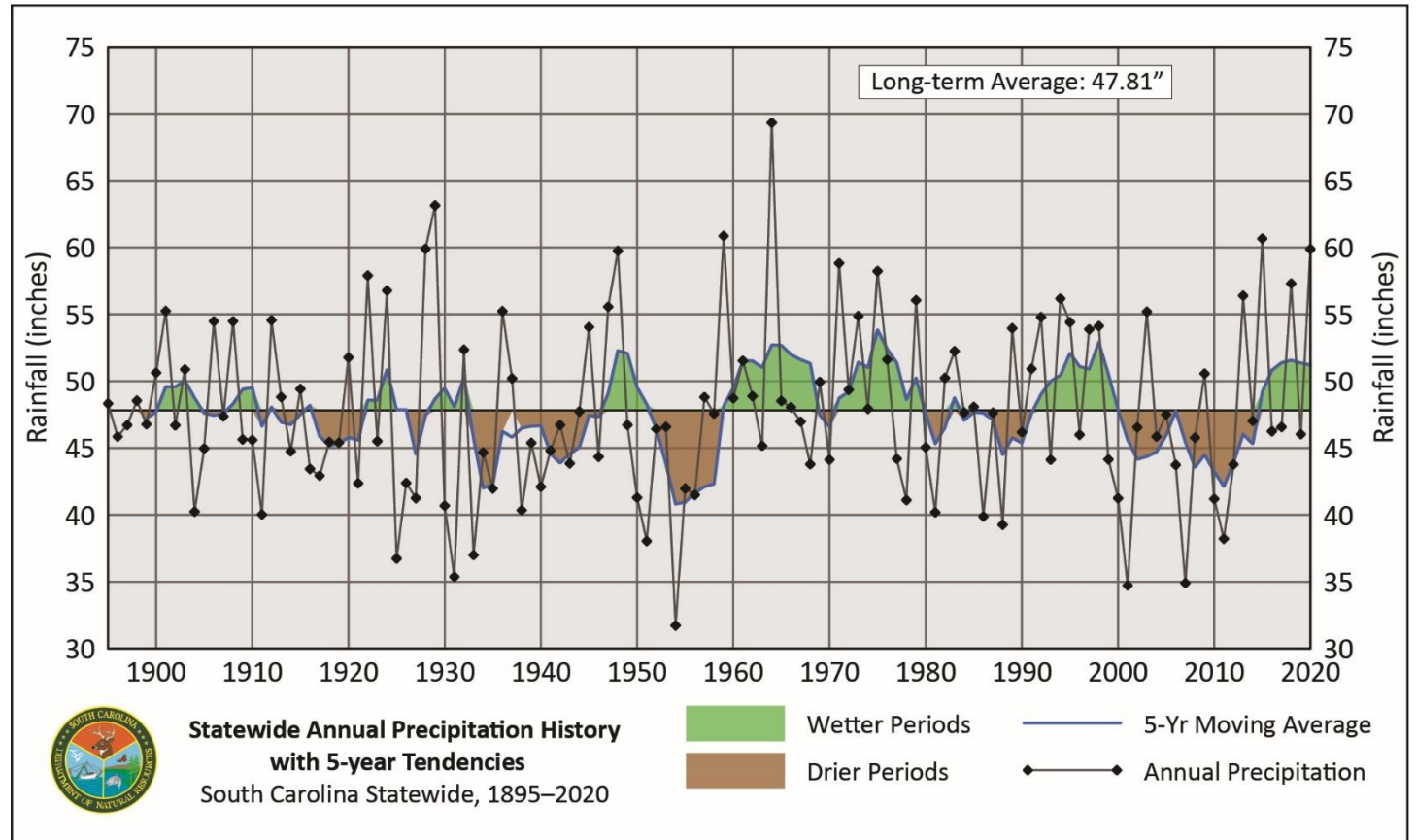


# Why State Water Planning?

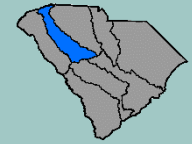


## Drought

- SC generally has an abundance of water, but recent droughts (**1998-2002, 2007-2008, 2011-2012, 2016, 2019, 2021**) have stressed the State's water resources.



Statewide Average Annual Rainfall (inches) and 5-year Running Average



# Why State Water Planning?

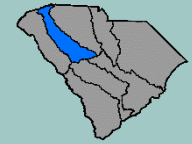


Tree-ring studies indicate the occurrence of more severe and longer-term droughts (Mega-droughts) over the past 400 years.

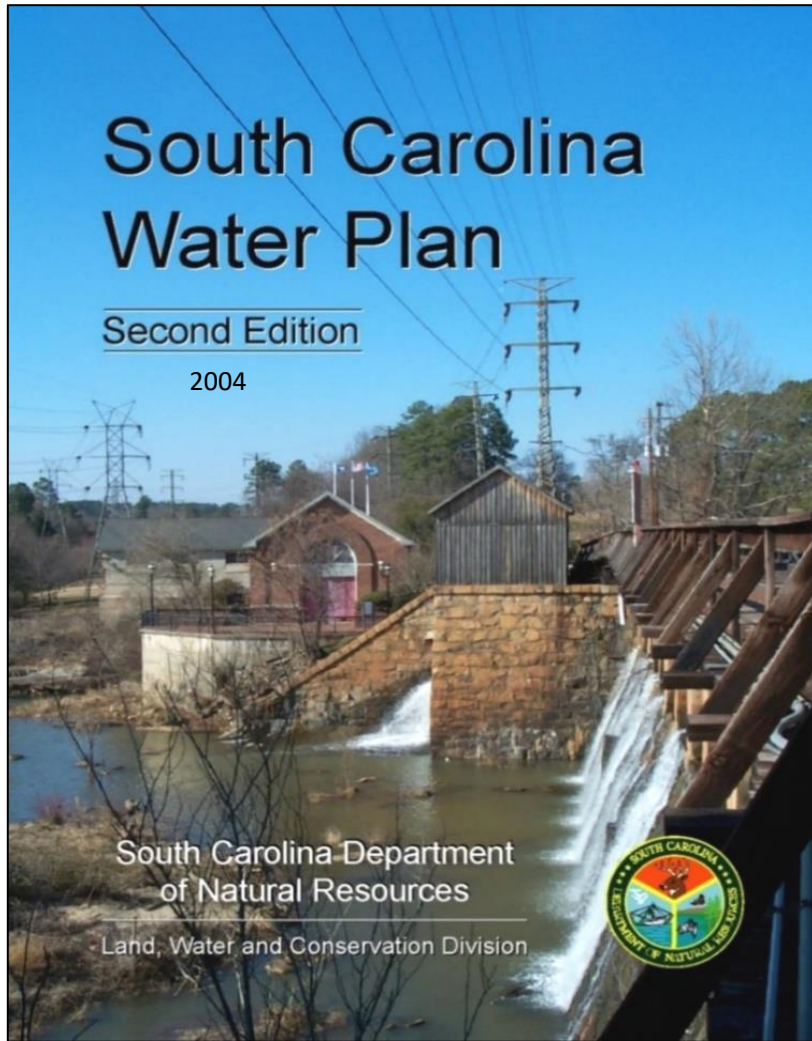
*Uncertainty in future droughts + increased water demand  
= the need for comprehensive State and river basin planning.*



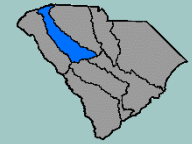




# A Brief History of State Water Planning



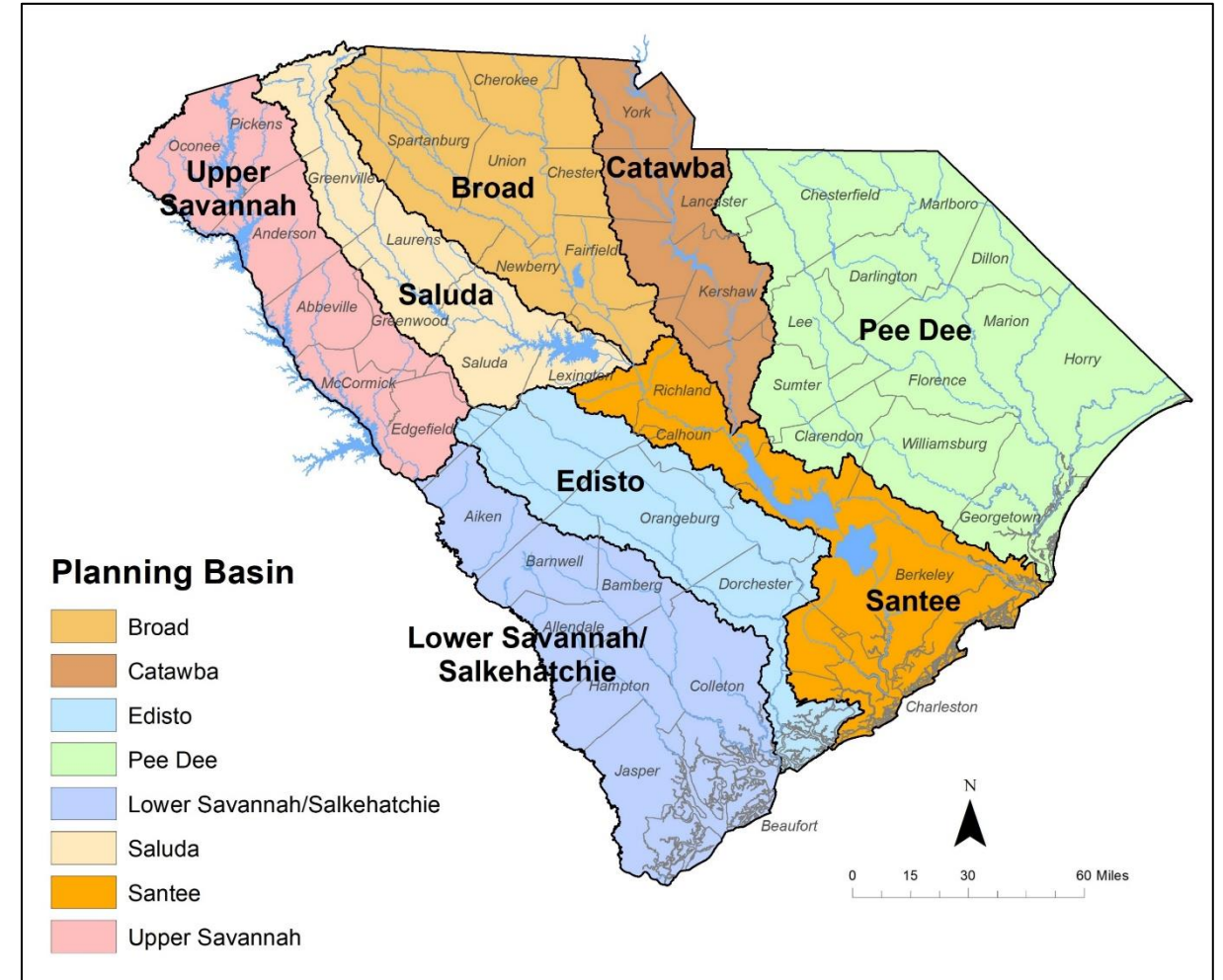
- SCDNR is legislatively mandated to develop a State Water Plan.
- SCDNR published the first edition of the State Water Plan in **1998**.
- In **2004**, SCDNR published the second edition of the South Carolina Water Plan incorporating lessons learned from the drought of 1998-2002.
- One recommendation was to develop a regional water plan for each major river basin in the State.
- In 2013, SCDNR initiated the first step towards these regional water plans, now formally called *River Basin Plans*.

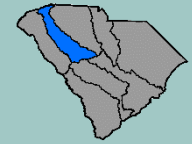


# South Carolina's Eight Planning Basins



- River Basin Plans will be developed for the State's 8 major river basins using a ***“bottom-up”*** approach where stakeholders in each basin lead the development of their basin plan.
- Collectively, the River Basin Plans will form the foundation of a new State Water Plan.





# Five-step Process

**1. Surface Water Assessments** – completed in 2017 for each basin (CDM Smith, Inc).

- Several models recently updated.

**2. Groundwater Assessment** – completed in 2021 (USGS).

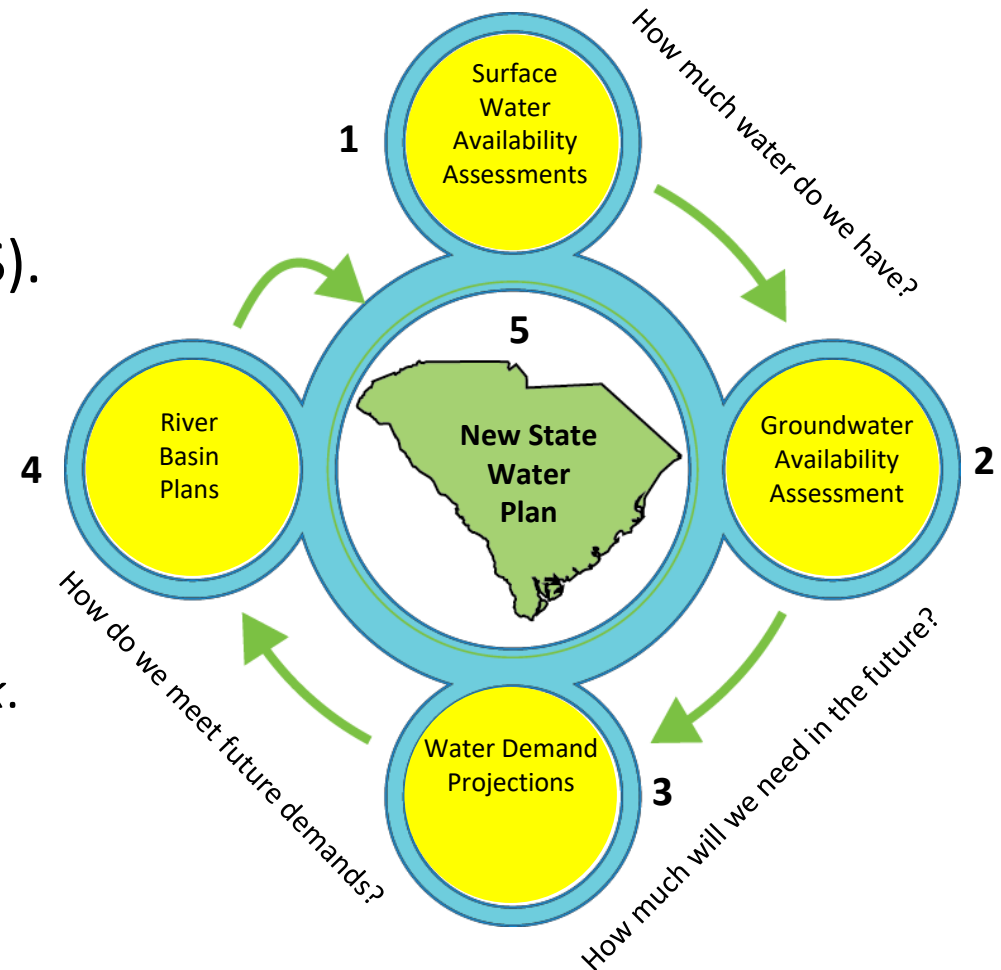
**3. Water Demand Projections** – methodology report completed in October 2019.

- Edisto basin projections completed in 2021.
- Projections for Broad and Pee Dee basin in progress.

**4. River Basin Plans**

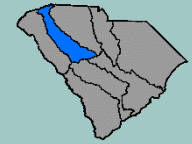
- Publication of *South Carolina State Water Planning Framework*.
- Edisto, Broad, and Pee Dee basin planning in progress.
- Saluda is the next basin to begin planning activities.

**5. State Water Plan** – River Basin Plans will form the foundation of a new State Water Plan.



**Cooperators:**





# Stakeholder Participation



**SWAM Model Stakeholder Meeting**



**Broad River Basin Council Meeting**



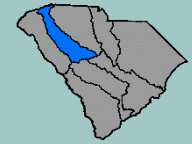
**Edisto Basin Water Demand Projection Stakeholder Meeting**



**PPAC Meeting**



**Edisto River Basin Council Field Trip**



# Planning Process Advisory Committee

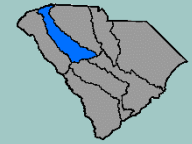


- Convened by SCDNR in March 2018.
- Purpose - develop a guidance document (Planning Framework) for developing River Basin Plans (Step 4) and for updating the State Water Plan (Step 5).
- South Carolina State Water Planning Framework (Planning Framework) was published in October 2019 after an 18-month process.
- PPAC continues to meet quarterly for planning oversight purposes.

## **PPAC Vision Statement:**

*“Reflecting our values of water as a shared resource with a shared responsibility, we will work together to develop and maintain an actionable State Water Plan balancing economic, environmental and social needs of South Carolina for generations to come.”*





# PPAC Committee Members



- Jeffery Allen** – Clemson University  
**David Baize** – SCAWWA/WEASC  
**David Bereskin** – Greenville Water  
**Jesse Cannon** – Santee Cooper  
**Fred Castles, III** – Catawba-Wateree Water Management Group  
**Clay Duffie** – Mt. Pleasant Waterworks (retired)  
**Steve Hamilton** – The Dunes Golf and Beach Club  
**Erika Hollis** – Upstate Forever  
**J.J. Jowers, Jr.** – Bamberg County citizen, Edisto Engineers and Surveyors, Inc.  
**Eric Krueger** – The Nature Conservancy  
**Jeff Lineberger** – Duke Energy  
**Jill Miller** – South Carolina Rural Water Association  
**Dean Moss, Jr.** – Beaufort Jasper WSA (retired)  
**Myra Reece** – South Carolina Department of Health and Environmental Control  
**Ken Rentiers** – South Carolina Department of Natural Resources  
**Bill Stangler** – Congaree Riverkeeper  
**Landrum Weathers** – Farmer  
**Scott Willett** – Anderson Regional Joint Water System  
**Charles Wingard** – Walter P. Rawl and Sons, Inc.



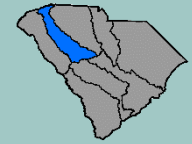
**For more information, visit:**

<https://www.clemson.edu/public/water-assessment/State-Water-Planning-Process-Advisory-Committee.html>



<https://hydrology.dnr.sc.gov/ppac.html>



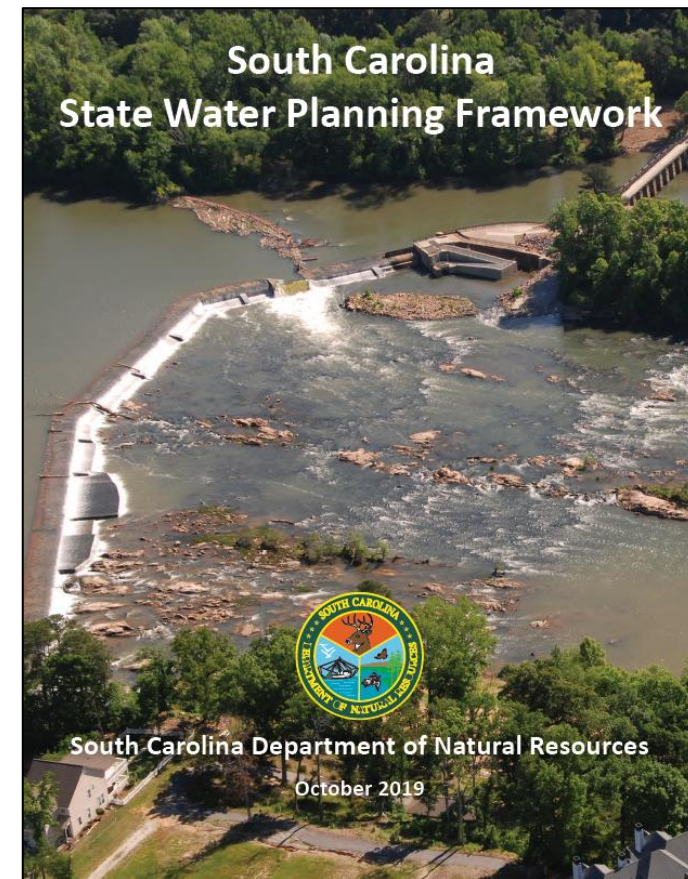


# Contents of Planning Framework

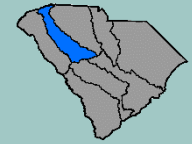


## Sections:

1. Executive Summary
  2. Introduction
  3. River Basin Planning Process
  4. Methodologies for Evaluating Water Availability
  5. River Basin Plan Table of Contents
  6. River Basin Planning Process Implementation
  7. River Basin Plan Implementation
  8. State Water Plan
- Appendix: River Basin Council Bylaws



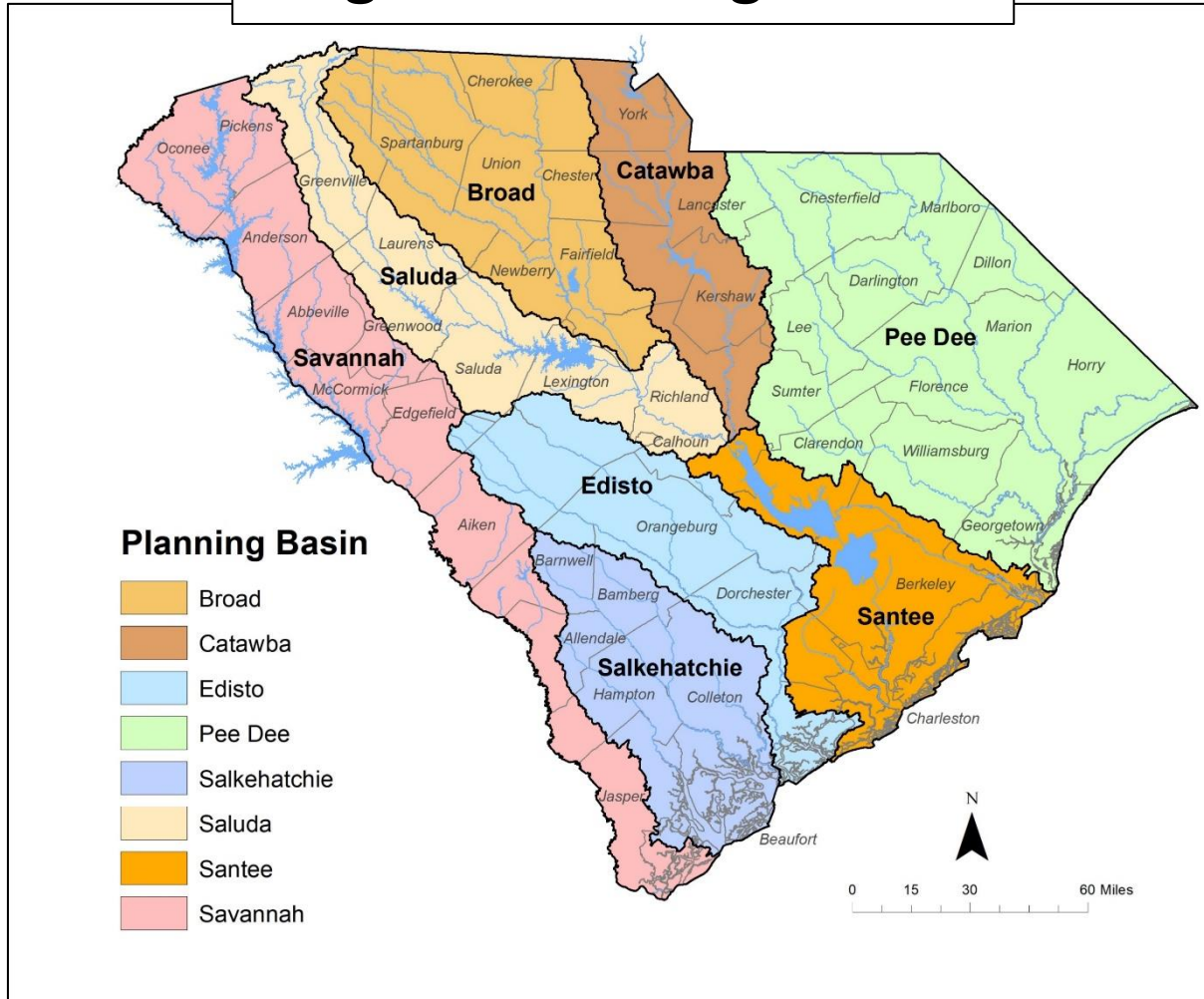
Planning Framework is available for review and download at:  
<https://hydrology.dnr.sc.gov/water-planning-framework.html>



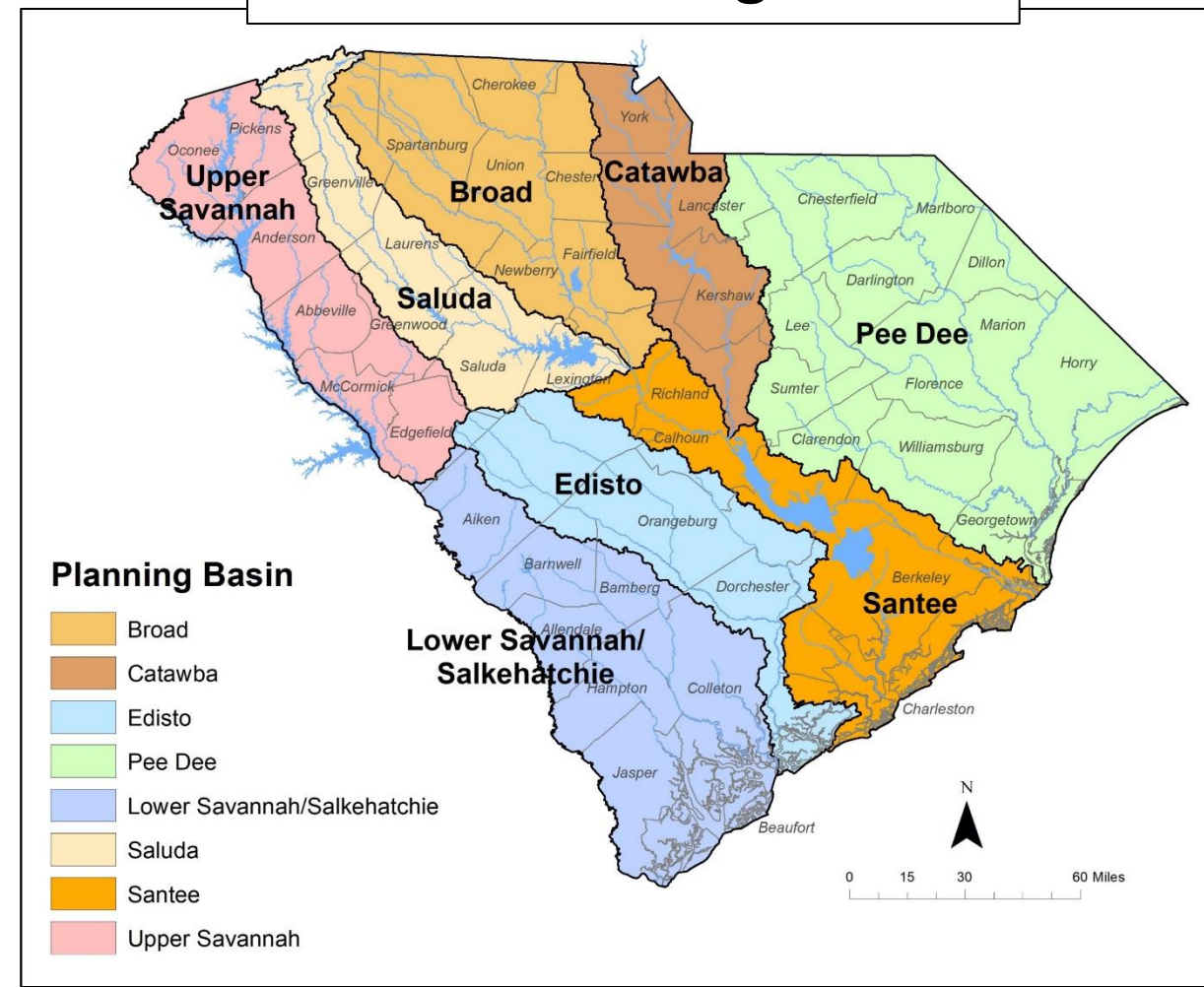
# Recent Changes to Planning Basin Boundaries



## Original Planning Basins

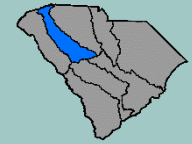


## Revised Planning Basins



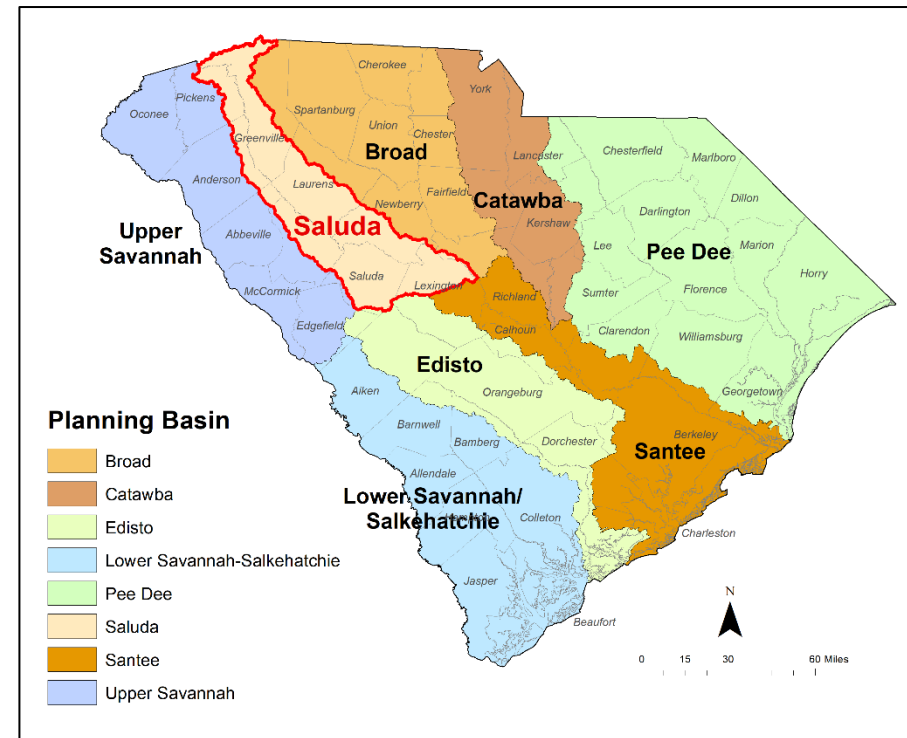
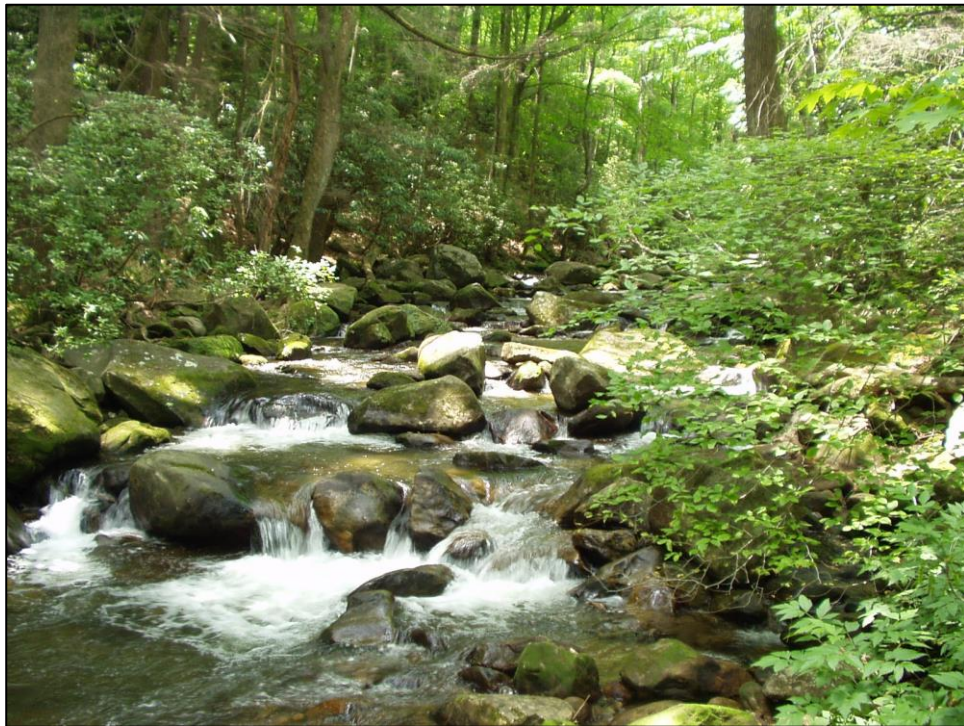
**Impacted basins include the Salkehatchie, Saluda, Santee, and Savannah basins**

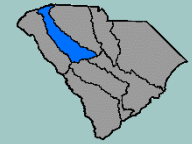




# Where are we now?

*Ready to start the Saluda River basin planning process under the guidance of the Planning Framework*





# Saluda River Basin Planning - Public Meeting #2



1. **Welcome and Opening Remarks** – Dr. Jeff Allen, Clemson University

2. **Why We Are Here** – Ken Rentiers, SCDNR, Deputy Director of the Land, Water & Conservation Division

*Why is water planning important to all South Carolina citizens?*

*Where are we in the planning process, how did we get here, and where are we going?*

3. **Saluda River Basin Planning – Alex Pellett, SCDNR, Hydrologist**

***What is a River Basin Plan and how will the Saluda River Basin Plan be developed?***

4. **Next Steps for Saluda River Basin Planning** – Alex Pellett, SCDNR

*What is the schedule for planning activities in the Saluda basin?*

*How can stakeholders apply to be on the Saluda River Basin Council?*

*What are other ways stakeholders can be involved?*

5. **Comments on Broad River Basin Planning** – Ken Tuck, Chairman of the Broad River Basin Council (RBC)

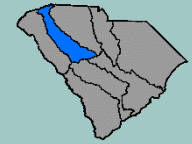
*The Broad RBC Chairman will share his perspective on State water planning and his experience with the Broad basin planning process.*

6. **Comments from the Planning Process Advisory Committee and Q&A Session** – moderated by Dr. Jeff Allen, Clemson University.

*PPAC members will share their perspectives on water planning and along with SCDNR address any comments or questions about the Planning Framework and Saluda basin planning activities.*

*Let us hear from you. We welcome your questions and feedback.*

# What is a River Basin Plan?



# What is a River Basin Plan?



A River Basin Plan answers four questions:

1. What is the basin's current available water supply and demand?
2. What are the current permitted and registered water uses?
3. What will be the basin's water demand over the Planning Horizon, and will the water supply meet the demand?
4. What water management strategies will be employed to ensure the supply meets or exceeds the projected demand over the Planning Horizon?

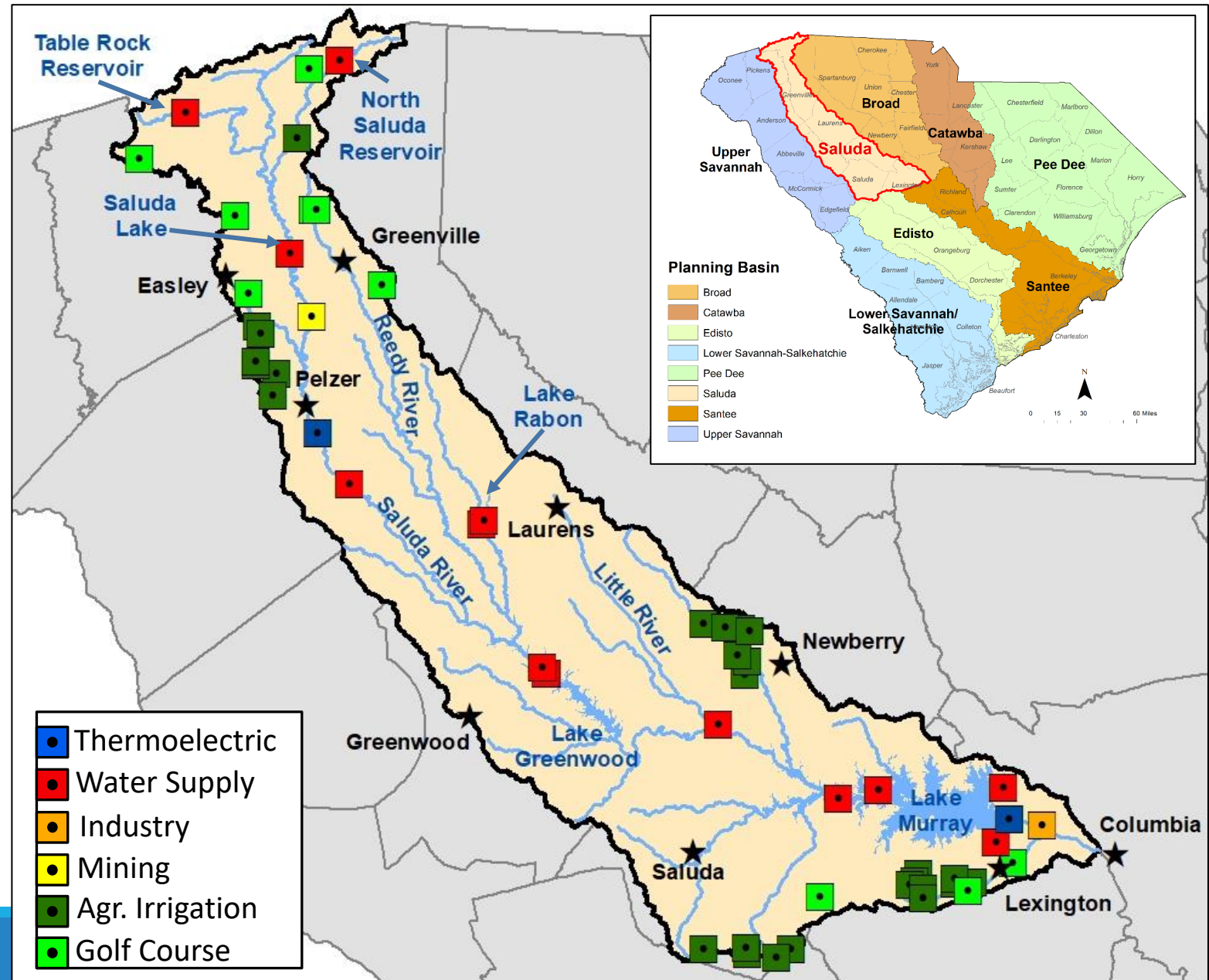
**Proactive Water Management, not Reactive!**

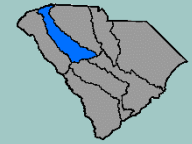


# Saluda Basin Water Use

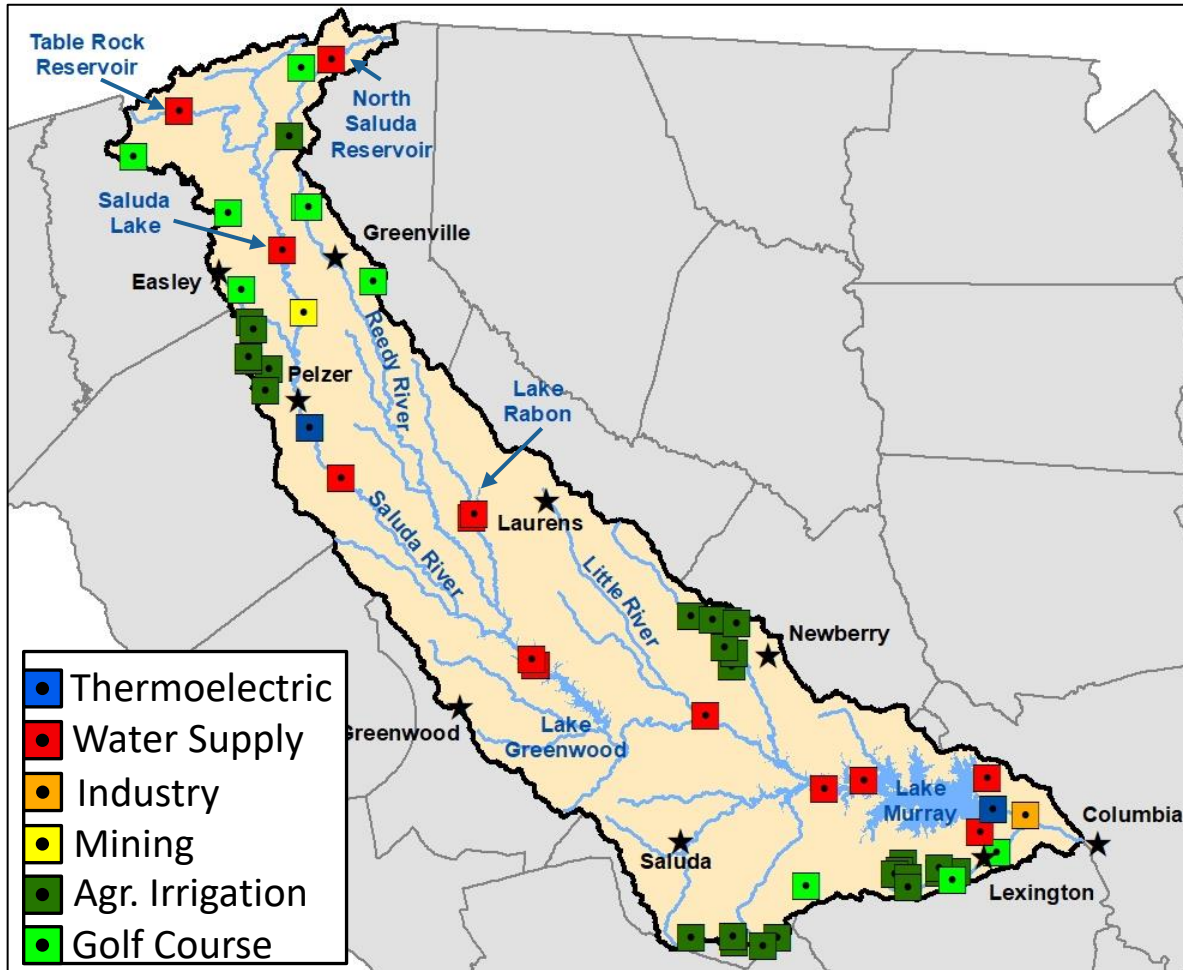


- Area = 2,523 sq. mi.
- Basin entirely within SC.
- Major subbasin of the greater Santee basin.
- More than 99% of withdrawals are from surface water.
- Planning will focus primarily on the basin's surface water resources.

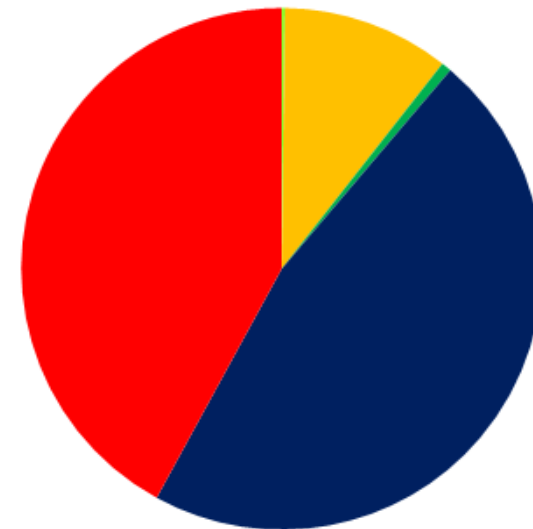




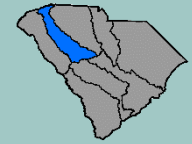
# 2021 Reported Water Withdrawals



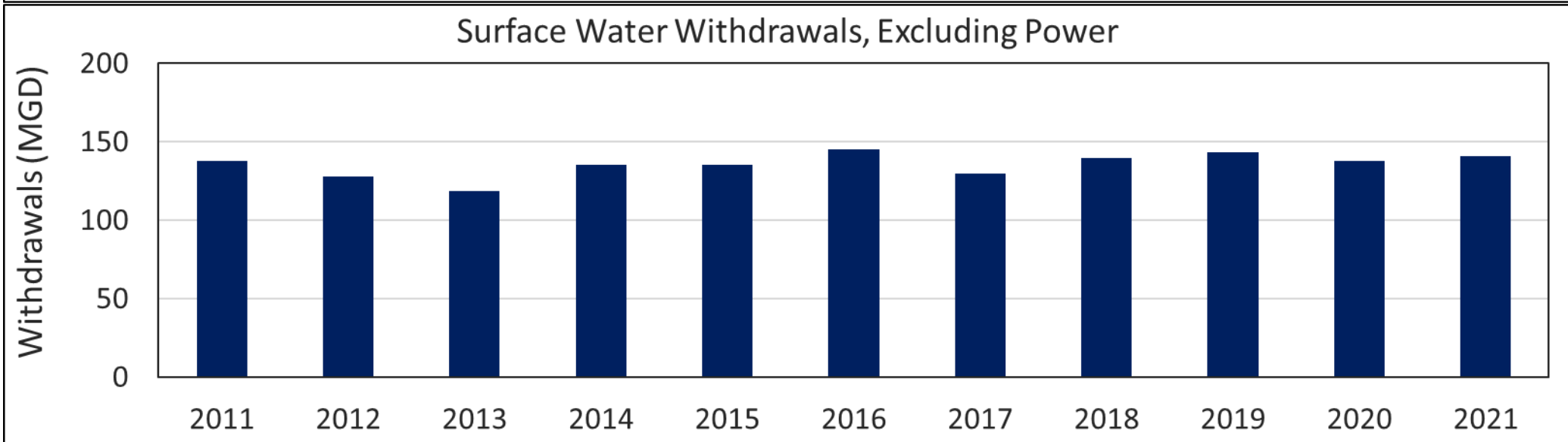
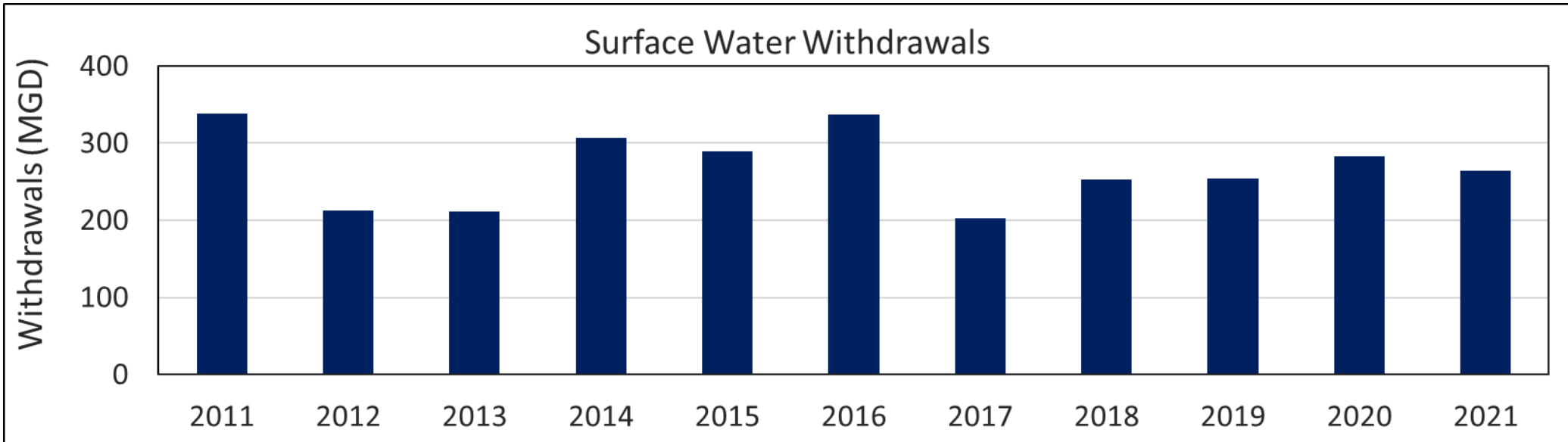
- Thermoelectric (47%)
- Water Supply (42%)
- Industry (10%)
- Agr. Irrigation (< 1%)
- Golf Course (< 1%)

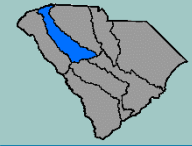


Source: SCDHEC Water Use Database



# Reported Surface Water Withdrawals (2011-2021)



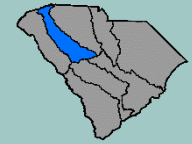


# Guiding Principles



- Water is a limited natural resource and is a major factor for economic development and environmental protection.
- River Basin Plans should strive for the equitable use of water resources with the goal of ensuring water is available for all uses, when and where needed, throughout the Planning Horizon and under drought conditions.
- River Basin Plans should protect the public's health and well-being and should balance social, economic, and environmental needs.

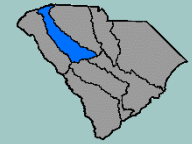




# Features of a River Basin Plan

- Covers a 50-year Planning Horizon.
- Considers both surface water and groundwater resources.
- Focuses on water quantity, not water quality.
- Emphasis is on drought conditions.
- Not a regulatory document but may include recommendations regarding State water policy, law, and regulations.
- Updated every 5 years – water planning will be an ongoing process.
- Supported by hydrologic data, models, and water-demand projections.



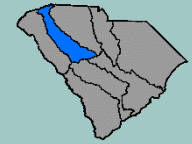


# River Basin Plan Table of Contents



1. Introduction
2. Description of the Basin
3. Water Resources of the Basin
4. Current and Projected Water Demand
5. Comparison of Water Resource Availability and Water Demand
6. Water Management Strategies
7. Water Management Strategy Recommendations
8. Drought Response
9. Policy, Legislative, Regulatory, Technical and Planning Process Recommendations
10. Implementation Plan

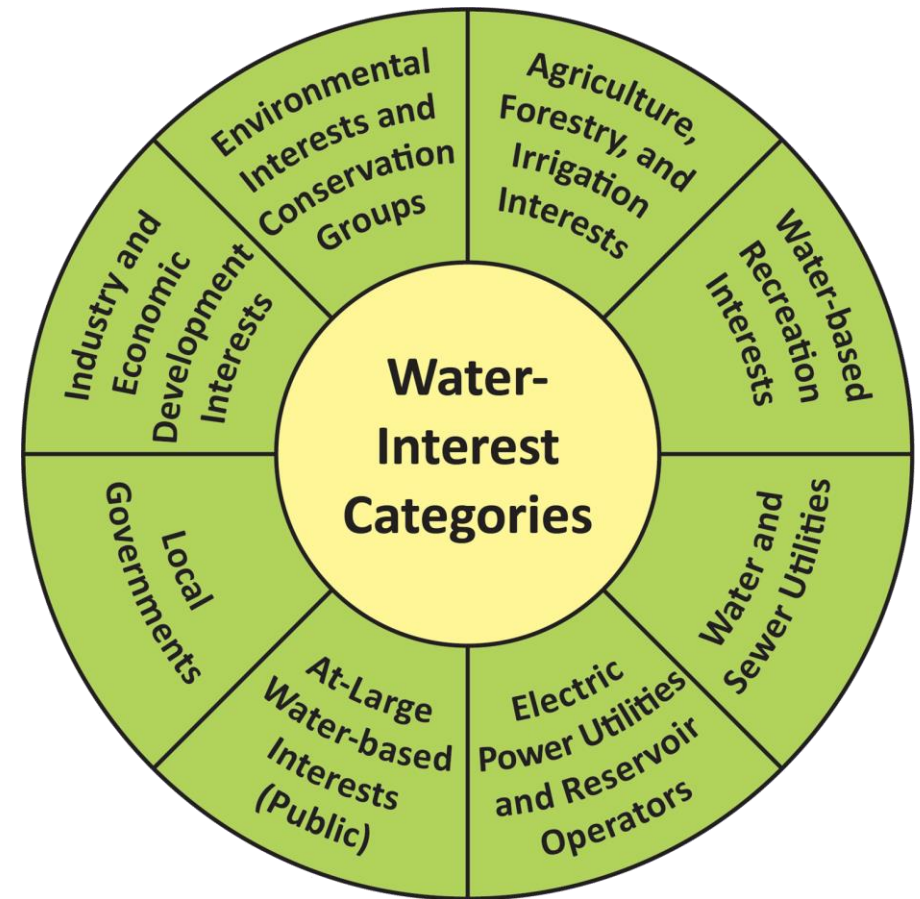
# How will the Saluda River Basin Plan be Developed?



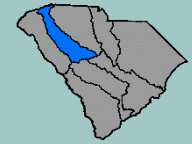
# River Basin Council (RBC)



- **Stakeholder-led team** responsible for developing the River Basin Plan.
- Up to **25** members representing 8 interest categories.
- Governed by a set of Bylaws.
- Consensus based decision-making process.
- Chair and Vice-Chair elected by RBC.



***River Basin Plans will be developed over a 2-year period***

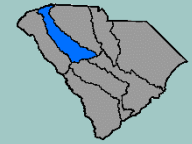


# RBC Roles and Responsibilities



- Identify water shortages or conflicts using hydrologic models.
- Recommend strategies to mitigate or eliminate water use conflicts or water shortages.
- Help draft River Basin Plans.
- Communicate with stakeholders and the public on water planning activities.
- Coordinate with other formal water planning bodies.
- Recommend changes to water policy or legislation or to the water planning process.
- Update River Basin Plans every 5 years and amend the plans as needed.

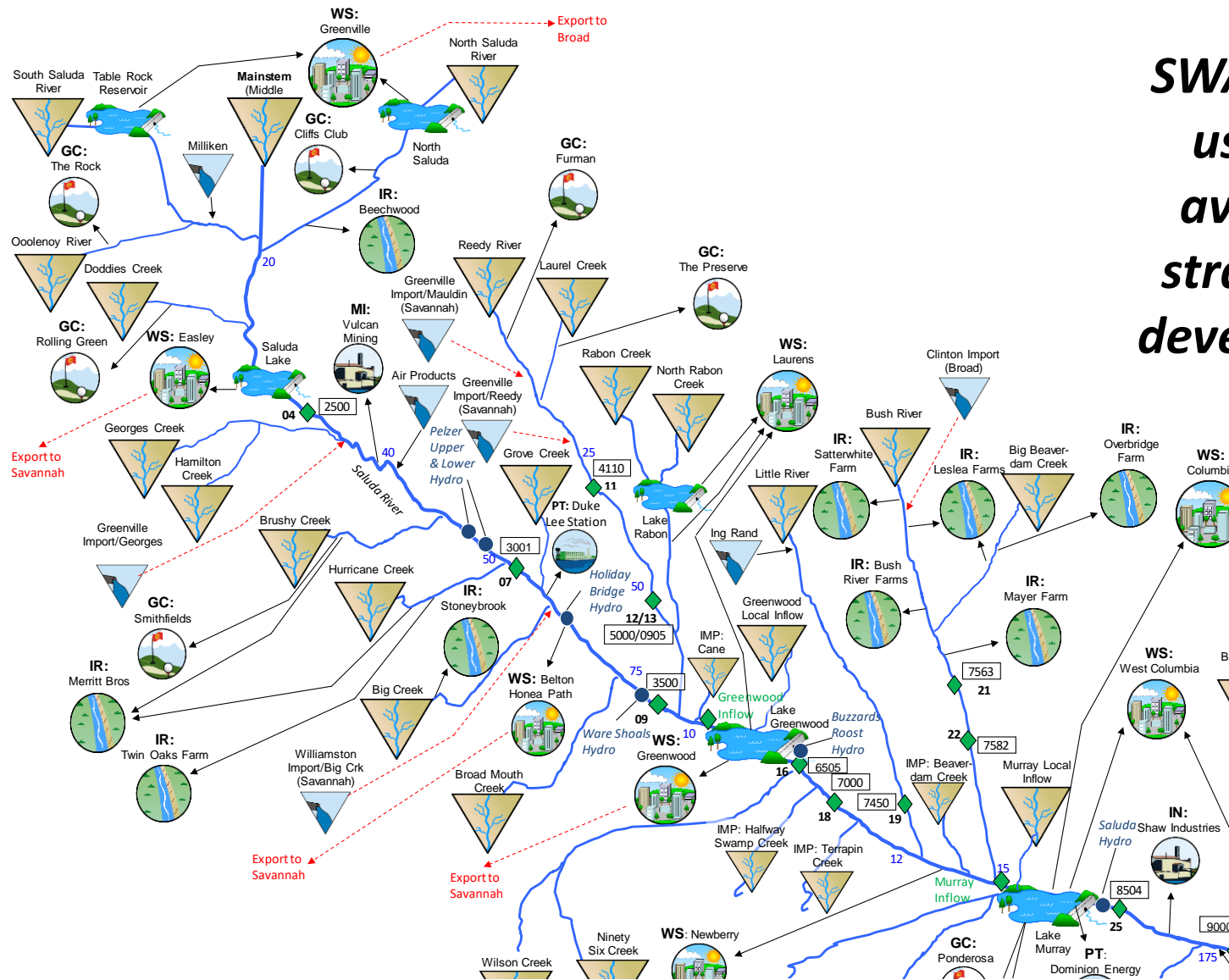




# Saluda Surface Water Model (SWAM)



***SWAM is a decision-making tool used to assess surface water availability and management strategies, and will support the development of River Basin Plans***





# Water Demand Projections – In Progress



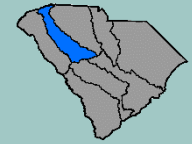
- Water demand methodology report released in October 2019 at <https://hydrology.dnr.sc.gov/water-demand.html>.
- Water users will have the opportunity to provide feedback on their water-demand projections.
- Projections will be used in surface water model to assess future water availability and will support the development of the Saluda River Basin Plan.



US Army Corps  
of Engineers



CLEMSON  
UNIVERSITY



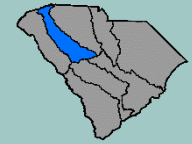
# RBC Support



- **Contractors** (solicited and hired by SCDNR):
  - Meeting facilitation
  - Meeting coordination (Clemson University) – administrative and logistical support
  - Surface water (CDM Smith) and groundwater (USGS) modeling technical support
  - Public outreach (Clemson University)
  - River Basin Plan report writing
- **Other State and Federal Agencies:**
  - RBCs can request agencies to serve as Advisors.
  - Participate in RBC meetings and subcommittee meetings as requested.
- **RBCs can request input from other outside advisors**

*PPAC and SCDNR will continue to provide oversight of the river basin planning process.*





# Saluda River Basin Planning - Public Meeting #2



1. **Welcome and Opening Remarks** – Dr. Jeff Allen, Clemson University

2. **Why We Are Here** – Ken Rentiers, SCDNR, Deputy Director of the Land, Water & Conservation Division

*Why is water planning important to all South Carolina citizens?*

*Where are we in the planning process, how did we get here, and where are we going?*

3. **Saluda River Basin Planning** – Alex Pellett, SCDNR, Hydrologist

*What is a River Basin Plan and how will the Saluda River Basin Plan be developed?*

4. **Next Steps for Saluda River Basin Planning – Alex Pellett, SCDNR**

***What is the schedule for planning activities in the Saluda basin?***

***How can stakeholders apply to be on the Saluda River Basin Council?***

***What are other ways stakeholders can be involved?***

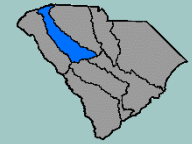
5. **Comments on Broad River Basin Planning** – Ken Tuck, Chairman of the Broad River Basin Council (RBC)

*The Broad RBC Chairman will share his perspective on State water planning and his experience with the Broad basin planning process.*

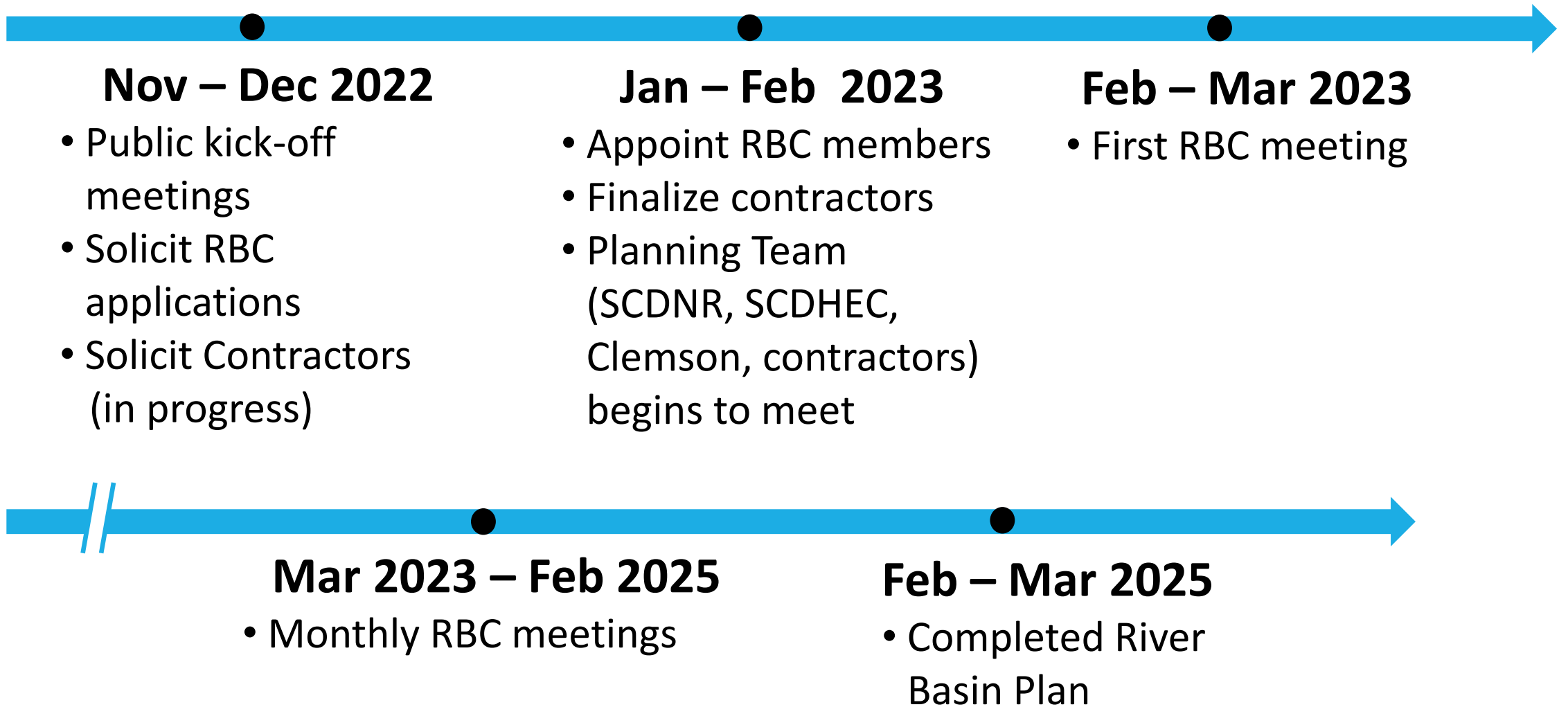
6. **Comments from the Planning Process Advisory Committee and Q&A Session** – moderated by Dr. Jeff Allen, Clemson University.

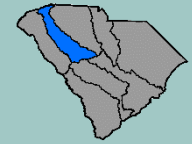
*PPAC members will share their perspectives on water planning and along with SCDNR address any comments or questions about the Planning Framework and Saluda basin planning activities.*

*Let us hear from you. We welcome your questions and feedback.*



# Saluda River Basin Planning Schedule





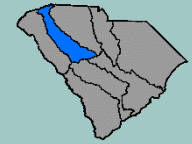
# RBC Membership Qualifications and Considerations



SCDNR appointments based on the following criteria:

- Applicant's credentials
  - Knowledgeable and experienced in their interest category.
  - Must either reside, work or officially represent an entity having a significant water resource interest in the basin.
  - Additional qualifiers – membership on the State Drought Response Committee, for example.
- Recommendations and endorsements submitted by various interest groups or organizations.
- Geographic diversity.
- PPAC recommendations.

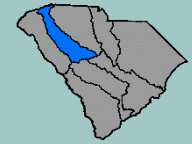
***SCDNR appointments will strive for a balanced representation***



# Membership Terms and Commitment Considerations



- Initial terms are 2, 3 or 4 years.
- Subsequent terms of 3 years (each additional term subject to SCDNR approval).
- RBC members can serve up to 3 consecutive terms.
- Considerations for RBC applicants:
  - Multi-year commitment.
  - Monthly in-person meetings (Held during normal business hours).
  - Subcommittee meetings.
  - Review of various technical reports and other documents.
  - Help write and review the River Basin Plan.
  - Annual meetings between iterations of the River Basin Plan (possibly higher frequency).



# Saluda River Basin Council Application Process



***Applicants should carefully consider the time commitment and workload required to an RBC member***

SALUDA RIVER BASIN COUNCIL  
MEMBERSHIP APPLICATION FORM



Last Name:  First Name:

Address:  Phone 1:

Phone 2:

City:  State:  ZIP:

Organization/Company:

Position:  E-mail:

Indicate which one Interest Category you are requesting to represent (required):

<input type="radio"/> Agriculture, Forestry, and Irrigation Interests	<input type="radio"/> Industry and Economic Development Interests
<input type="radio"/> Local Governments	<input type="radio"/> Water-based Recreation Interests
<input type="radio"/> Water and Sewer Utilities	<input type="radio"/> Environmental Interests
<input type="radio"/> Electric-Power Utilities and Non-Federal Reservoir Operators	<input type="radio"/> At-Large Water-based Interests

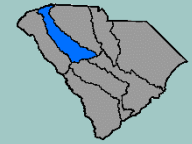
1. How are you affiliated with this Interest Category?

2. Explain what makes you an appropriate representative of your selected Interest Category:

3. Describe your relevant qualifications and background or experience with water resources:

4. Explain how you would apply your skills and experience to assure successful water planning for the Saluda River Basin:

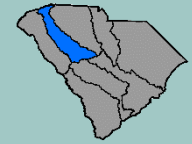
<https://hydrology.dnr.sc.gov/saluda-basin-planning.html>



# Saluda River Basin Council Application Process



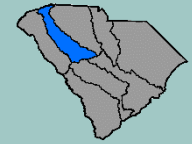
- Application period: **Nov 1<sup>st</sup> – Dec 16<sup>th</sup>, 2022.**
- Application forms available on SCDNR website:  
<https://hydrology.dnr.sc.gov/saluda-basin-planning.html>
- Application forms and recommendations should be sent to *Ken Rentiers* (see application for contact information).
- Application review period: **Dec 17<sup>th</sup>, 2022 – Jan 31<sup>st</sup>, 2023.**
  - *PPAC will review applications and make recommendations to SCDNR.*
- Final selection and notification by **Jan 31<sup>st</sup>, 2023.**
- Applicants not appointed for membership may be placed on a waiting list.



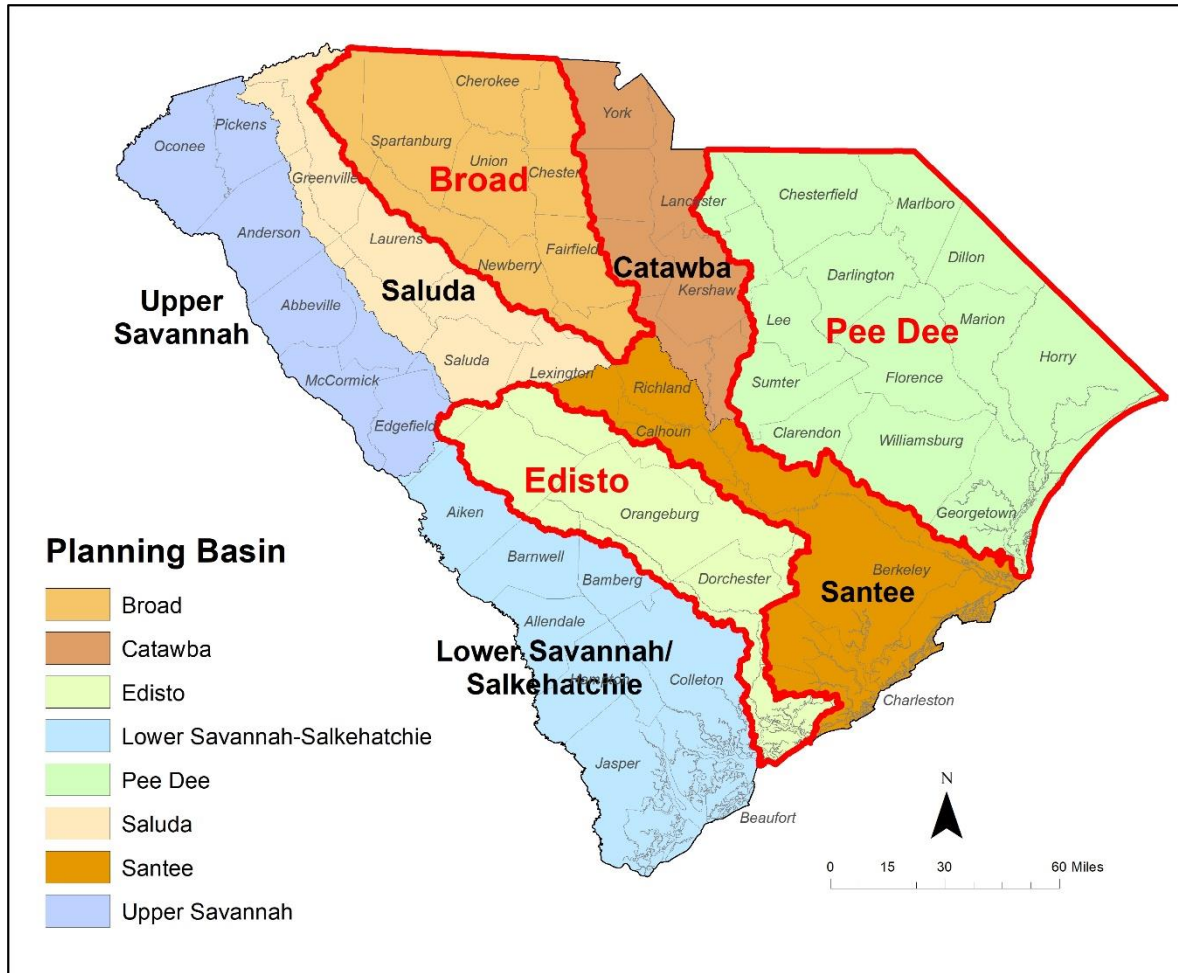
# Stakeholder/Public Participation Opportunities



- Guidelines for stakeholder and public participation described in Section 3.7 of Planning Framework.
- Public meetings (3 to 4 per basin):
  - Prior to first RBC meeting – “kickoff” meeting(s).
  - After *draft* River Basin Plan is released.
  - After *final* River Basin Plan is released.
- Draft River Basin Plan Public Review Period (30 days).
- RBC Meetings:
  - Open to the public.
  - Each meeting will include public comment period.

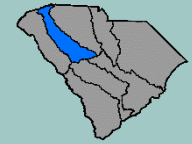


# River Basin Planning



- **Edisto:**
  - First basin selected for implementing Planning Framework.
  - Planning activities began in June 2020.
  - River Basin Plan scheduled to be completed in early 2023.
- **Broad:**
  - Planning activities began in March 2022.
  - Final River Basin Plan scheduled for February 2024.
- **Pee Dee:**
  - Planning activities began in June 2022.
  - Final River Basin Plan scheduled for May 2024.





# SCDNR Hydrology Section Website



## Water Planning

The SCDNR Hydrology Section is responsible for formulating and establishing a comprehensive water resources policy for the State of South Carolina.

### Overview

The South Carolina Department of Natural Resources (SCDNR) is legislatively mandated through the [South Carolina Water Resources Planning and Coordination Act](#) (§ 49-3-10, et. seq., Code of Laws of South Carolina, 1976) to formulate and establish a comprehensive water resources policy or water plan for the State. The [first edition of the South Carolina Water Plan](#) was published in 1998, and was subsequently updated in 2004 to incorporate experiences and knowledge gained from the severe, statewide drought of 1998–2002. The 2004 Water Plan highlighted the need for water planning on a regional level.

In 2019, SCDNR published the [South Carolina State Water Planning Framework](#) (Planning Framework) under the guidance of the [Planning Process Advisory Committee](#) (PPAC). The Planning Framework describes the process of developing regional water plans, now formerly called River Basin Plans, that will support the development of a new State Water Plan. River Basin Plans will be developed for the eight major river basins in the State – Broad, Catawba, Edisto, Pee Dee, Salkehatchie, Saluda, Santee, and Savannah. To support the development of the River Basin Plans, hydrologic models have been developed for both the State's surface water and groundwater resources and will be used along with water demand projections to assess current and future water availability in the State.

Frequently asked questions about the new State Water Planning Framework and River Basin Planning Activities can be found [here](#).

*Public Notice: Two public meetings are scheduled for November 1<sup>st</sup> and 3<sup>rd</sup>, 2022 to kick-off Saluda River Basin planning activities.*

For more information, please visit the [Saluda Basin planning site](#) or contact Scott Harder ([harders@dnr.sc.gov](mailto:harders@dnr.sc.gov)).

### State and River Basin Planning Framework



### Edisto Basin Planning



### Broad Basin Planning



### Pee Dee Basin Planning



### Saluda Basin Planning



## Saluda Basin Planning

Activities and reports on water planning in the Saluda River basin.

### Overview

River basin planning activities in the Saluda basin will soon be initiated under the guidance of the [South Carolina State Water Planning Framework](#). Two public meetings are scheduled for November 1<sup>st</sup> in Columbia, SC and on November 3<sup>rd</sup> in Greenville, SC to kick-off planning activities. An overview of the South Carolina State Water Planning Framework will be provided to the basin's stakeholders and applications to serve on the Saluda River Basin Council will be solicited. Please visit this website for periodic updates and new information regarding Saluda river basin planning activities.

*Public Notice: Two public meetings are scheduled for November 1<sup>st</sup> and 3<sup>rd</sup>, 2022 to kick-off Saluda River Basin planning activities (see below for meeting times and locations).*

Please contact Scott Harder ([harders@dnr.sc.gov](mailto:harders@dnr.sc.gov)) for more information.

### Public Meetings

#### Meeting #1 - Columbia, SC

November 1<sup>st</sup>, 2022; 6:00 pm – 8:00 pm

Location: The River Center - Saluda Shoals Park ([Map](#))

5605 Bush River Road

Columbia, SC 29212

[Draft Agenda](#)

#### Meeting #2 - Greenville, SC

November 3<sup>rd</sup>, 2022; 6:00 pm – 8:00 pm

Location: Roper Mountain Science Center ([Map](#))

Environmental Science & Sustainability Building, Room 201

402 Roper Mountain Rd.

Greenville, SC 29615

[Draft Agenda](#)

### Saluda Planning News

- [Public Meetings Scheduled for November 1<sup>st</sup> and 3<sup>rd</sup> to Kick-off Saluda River Basin Planning Activities](#)

### Hydrology Calendar

#### Upcoming events

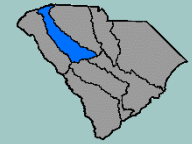
- [Saluda River Basin Planning Public Meeting #1](#)

<https://hydrology.dnr.sc.gov/water-planning.html>

<https://hydrology.dnr.sc.gov/saluda-basin-planning.html>

## Site hosts:

- Announcements/Calendar of Events
- Access to water planning documents – Planning Framework, technical reports
- RBC meeting materials – agendas, presentations, recordings



# Contact Information



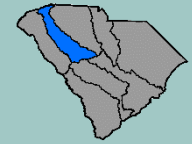
Alex Pellett:

[pellettc@dnr.sc.gov](mailto:pellettc@dnr.sc.gov)

Scott Harder:

[harders@dnr.sc.gov](mailto:harders@dnr.sc.gov)





# Saluda River Basin Planning - Public Meeting #2



1. **Welcome and Opening Remarks** – Dr. Jeff Allen, Clemson University
2. **Why We Are Here** – Ken Rentiers, SCDNR, Deputy Director of the Land, Water & Conservation Division

*Why is water planning important to all South Carolina citizens?*

*Where are we in the planning process, how did we get here, and where are we going?*

3. **Saluda River Basin Planning** – Alex Pellett, SCDNR, Hydrologist

*What is a River Basin Plan and how will the Saluda River Basin Plan be developed?*

4. **Next Steps for Saluda River Basin Planning** – Alex Pellett, SCDNR

*What is the schedule for planning activities in the Saluda basin?*

*How can stakeholders apply to be on the Saluda River Basin Council?*

*What are other ways stakeholders can be involved?*

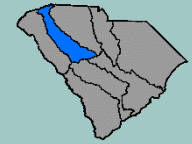
5. **Comments on Broad River Basin Planning – Ken Tuck, Chairman of the Broad River Basin Council (RBC)**

***The Broad RBC Chairman will share his perspective on State water planning and his experience with the Broad basin planning process.***

6. **Comments from the Planning Process Advisory Committee and Q&A Session** – moderated by Dr. Jeff Allen, Clemson University.

*PPAC members will share their perspectives on water planning and along with SCDNR address any comments or questions about the Planning Framework and Saluda basin planning activities.*

*Let us hear from you. We welcome your questions and feedback.*



# Saluda River Basin Planning - Public Meeting #2



1. **Welcome and Opening Remarks** – Dr. Jeff Allen, Clemson University
2. **Why We Are Here** – Ken Rentiers, SCDNR, Deputy Director of the Land, Water & Conservation Division
  - Why is water planning important to all South Carolina citizens?*
  - Where are we in the planning process, how did we get here, and where are we going?*
3. **Saluda River Basin Planning** – Alex Pellett, SCDNR, Hydrologist
  - What is a River Basin Plan and how will the Saluda River Basin Plan be developed?*
4. **Next Steps for Saluda River Basin Planning** – Alex Pellett, SCDNR
  - What is the schedule for planning activities in the Saluda basin?*
  - How can stakeholders apply to be on the Saluda River Basin Council?*
  - What are other ways stakeholders can be involved?*
5. **Comments on Broad River Basin Planning** – Ken Tuck, Chairman of the Broad River Basin Council (RBC)
  - The Broad RBC Chairman will share his perspective on State water planning and his experience with the Broad basin planning process.*
6. **Comments from the Planning Process Advisory Committee and Q&A Session** – moderated by Dr. Jeff Allen, Clemson University.
  - PPAC members will share their perspectives on water planning and along with SCDNR address any comments or questions about the Planning Framework and Saluda basin planning activities. Let us hear from you. We welcome your questions and feedback.***