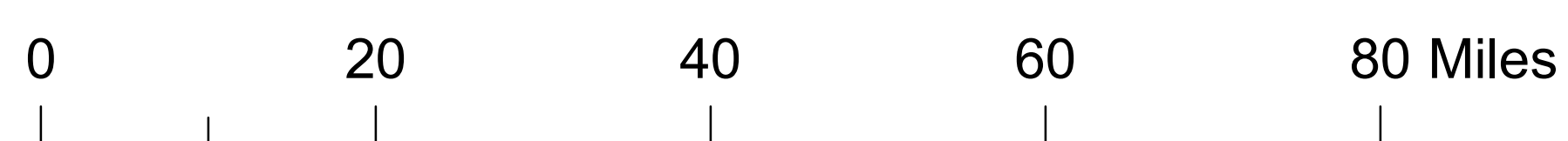
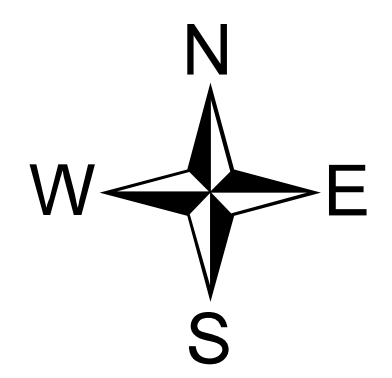
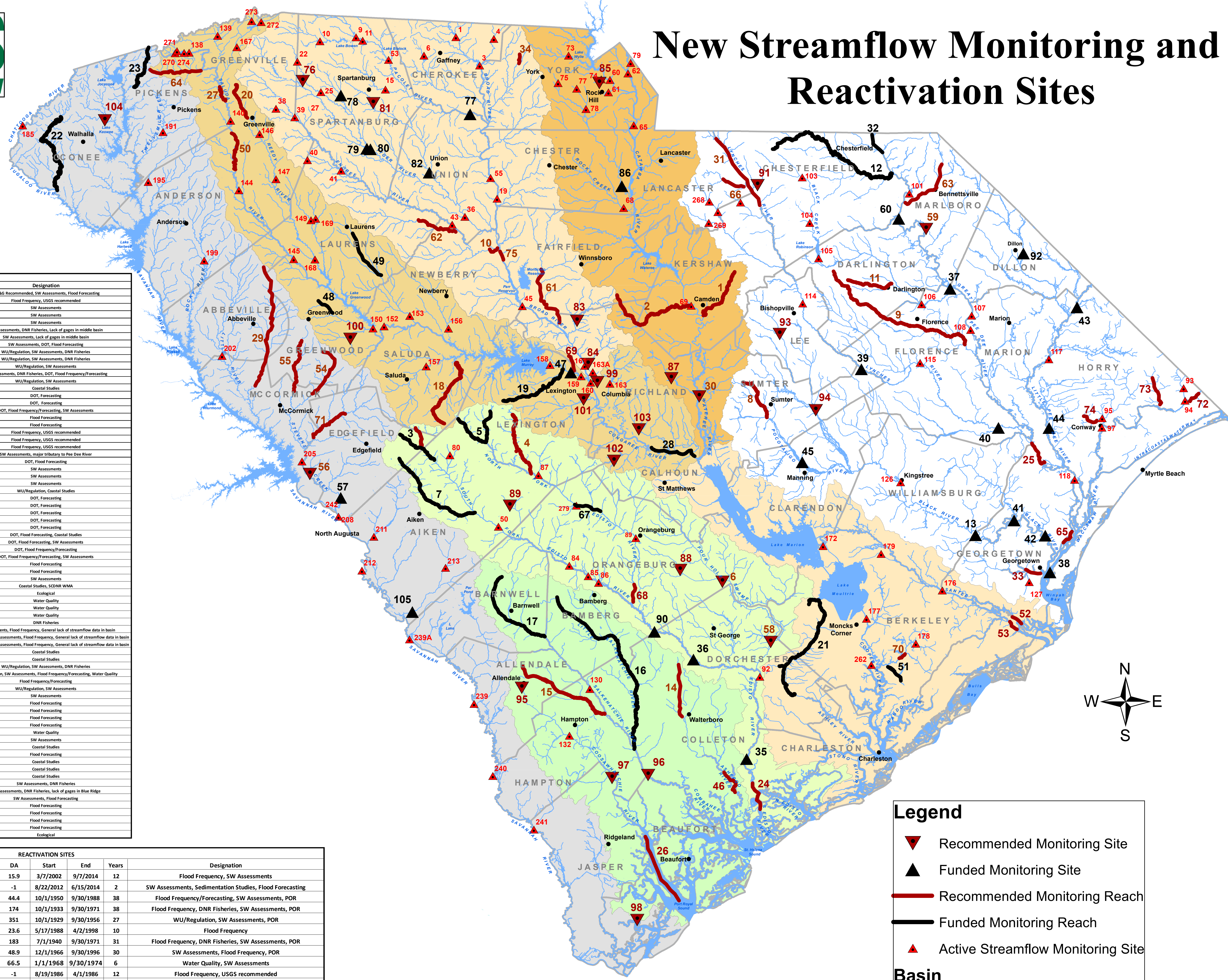




New Streamflow Monitoring and Reactivation Sites

ID	Stream Reach or Site	Basin	Description	Designation
10	Roanoke River	Broad	Mainstem, near confluence with Broad	SC&G Recommended, SW Assessments, Flood Forecasting
14	Rosky Branch	Broad	Tributary to Bullock Creek	Flood Frequency, USGS recommended
61	Little River	Broad	Tributary to Broad River	SW Assessments
2	Duncan Creek	Broad	Tributary to Enoree River	SW Assessments
75	Broad River	Broad	Mainstem, above Parr Reservoir	SW Assessments
1	Big Pine Tree Creek	Catawba	Tributary to Catawba	SW Assessments, DNR Fisheries, Lack of gages in middle basin
3	Tweedyfork Creek	Catawba	Tributary to Catawba	SW Assessments, Lack of gages in middle basin
30	Waterloo River	Catawba	Mainstem, US 378	SW Assessments, DOT, Flood Forecasting
4	South Fork Edisto Headwaters	Edisto	Mainstem or Beech Creek	WU/Regulation, SW Assessments, DNR Fisheries
5	Black Creek	Edisto	Tributary to Upper North Fork Edisto	WU/Regulation, SW Assessments, DNR Fisheries
4	North Fork Edisto Headwaters	Edisto	Mainstem, Chiquappa Creek or Lightwood Knot Creek	WU/Regulation, SW Assessments
6	Four Hole Swamp	Edisto	Tributary to Edisto, I-95	SW Assessments, DNR Fisheries, DOT, Flood Frequency/Forecasting
7	Shaw Creek	Edisto	Tributary to South Fork Edisto	WU/Regulation, SW Assessments
24	Edisto River	Edisto	Mainstem or South Edisto River, Coastal	Coastal Studies
35	Edisto River	Edisto	Mainstem, US 17	DOT, Forecasting
36	Edisto River	Edisto	Mainstem, I-95	DOT, Forecasting
37	Four Hole Swamp	Edisto	Lower part of basin near Edisto confluence	DOT, Flood Frequency/Forecasting, SW Assessments
68	North Fork Edisto River	Edisto	Mainstem, Hwy 321 or Slab Landing Rd	Flood Forecasting
28	North Fork Edisto River	Edisto	Mainstem, near confluence with South Fork Edisto	Flood Forecasting
8	Greens Swamp	Pee Dee	Tributary to Pottotally River	Flood Frequency, USGS recommended
9	Jeffries Creek	Pee Dee	Tributary to Pee Dee	Flood Frequency, USGS recommended
11	Swift Creek	Pee Dee	Tributary to Black Creek	Flood Frequency, USGS recommended
12	Thompson Creek	Pee Dee	Tributary to Pee Dee	SW Assessments, major tributary to Pee Dee River
13	Black River	Pee Dee	Mainstem, SC 41	DOT, Flood Forecasting
15	Pee Dee River	Pee Dee	Below Lynchs River Confluence	SW Assessments
16	Lynchs River	Pee Dee	Upper Lynchs Mainstem	SW Assessments
32	Pee Dee River	Pee Dee	Mainstem near NC-SC border	SW Assessments
33	Sampit River	Pee Dee	Coastal	WU/Regulation, Coastal Studies
37	Pee Dee River	Pee Dee	Mainstem, I-95	DOT, Forecasting
38	Pee Dee/Waccamaw	Pee Dee	US 17	DOT, Forecasting
39	Lynchs River	Pee Dee	Mainstem, I-95	DOT, Forecasting
40	Lynchs River	Pee Dee	Mainstem, SC 41/21	DOT, Forecasting
41	Black River	Pee Dee	Mainstem, SC 51	DOT, Forecasting
42	Black River	Pee Dee	Mainstem, US 701	DOT, Flood Forecasting, Coastal Studies
43	Lumber River	Pee Dee	Mainstem, SC 9/US 76	DOT, Flood Forecasting, SW Assessments
44	Little Pee Dee River	Pee Dee	Mainstem, US 378	DOT, Flood Frequency/Forecasting
45	Pocotaligo River	Pee Dee	Tributary to Black River, I-95	DOT, Flood Frequency/Forecasting, SW Assessments
59	Pee Dee River	Pee Dee	Mainstem, Top Blue Landing	Flood Forecasting
60	Pee Dee River	Pee Dee	Mainstem, US 15/401	Flood Forecasting
63	Cooked Creek	Pee Dee	Tributary to Pee Dee River	SW Assessments
65	Pee Dee River	Pee Dee	Mainstem	Coastal Studies, SCDNR WMA
66	Flat Creek	Pee Dee	Tributary to Lynchs River	Ecological
72	Waccamaw River	Pee Dee	Mainstem, upstream of Back Creek	Water Quality
73	Simpson Creek	Pee Dee	Tributary to Waccamaw River	Water Quality
74	Crabtree Canal	Pee Dee	Tributary to Waccamaw River, upstream of Oak St.	Water Quality
14	Ashepoo River	Salkehatchie	Upper Mainstem	DNR Fisheries
15	Jackson Branch	Salkehatchie	Tributary to Salkehatchie	SW Assessments, Flood Frequency, General lack of streamflow data in basin
16	Little Salkehatchie River	Salkehatchie	Tributary to Salkehatchie	DNR Fisheries, SW Assessments, Flood Frequency, General lack of streamflow data in basin
17	Salkehatchie River	Salkehatchie	Upper Salkehatchie Mainstem	DNR Fisheries, SW Assessments, Flood Frequency, General lack of streamflow data in basin
26	Broad River/Fork South	Salkehatchie	Coastal	Coastal Studies
46	Ashepoo River	Salkehatchie	Coastal	Coastal Studies
18	Clouds Creek	Saluda	Tributary to Little Saluda River	WU/Regulation, SW Assessments, DNR Fisheries
19	Twelveville Creek	Saluda	Tributary Saluda	WU/Regulation, SW Assessments, Flood Frequency/Forecasting, Water Quality
20	Reedy River	Saluda	Upper Reedy River	Flood Frequency/Forecasting
27	Saluda River	Saluda	Below North Saluda River Confluence	WU/Regulation, SW Assessments
28	Congaree River	Saluda	Above Walter River Confluence	SW Assessments
47	Saluda River	Saluda	Mainstem, I-26	Flood Forecasting
48	Coronaca Creek	Saluda	Tributary to Wilson Creek	Flood Forecasting
49	Little River	Saluda	Heath between City of Laurens and Newberry County Line	Flood Forecasting
50	Saluda River	Saluda	Mainstem	Flood Forecasting
51	Stoop Creek	Saluda	Tributary to Lower Saluda River	Water Quality
64	Codony River	Saluda	Tributary to South Saluda River	SW Assessments
21	Achley River	Santee	Mainstem	Coastal Studies
52	French Quarter Creek	Santee	Tributary to East Branch Cooper River	Flood Forecasting
53	North Santee River	Santee	Coastal	Coastal Studies
54	South Santee River	Santee	Coastal	Coastal Studies
70	East Branch Cooper River	Santee	Near confluence of Quinby and Huger Creeks	Coastal Studies
21	Chauga River	Savannah	Tributary to Lake Hartwell	SW Assessments, DNR Fisheries
23	Eastatoe Creek	Savannah	Headwater Tributary to Lake Keowee	SW Assessments, DNR Fisheries, Lack of gages in Blue Ridge
29	Long Cane Creek	Savannah	Tributary to Little River	SW Assessments, Flood Forecasting
54	Cuffeytown Creek	Savannah	Tributary to Steven's Creek	Flood Forecasting
55	Hard Labor Creek	Savannah	Tributary to Steven's Creek	Flood Forecasting
56	Steven's Creek	Savannah	Mainstem, Garnett Rd	Flood Forecasting
57	Steven's Creek	Savannah	Mainstem, Woodlawn Rd	Flood Forecasting
71	Turkey Creek	Savannah	Tributary to Steven's Creek	Ecological

ID	Site No.	Site Name	Basin	DA	Start	End	Years	Designation
76	2157490	Beaverdam Creek above Greer, SC	Broad	15.9	3/7/2002	9/7/2014	12	Flood Frequency, SW Assessments
77	2156370	Pacolet River near Saratt, SC	Broad	-1	8/22/2012	6/15/2014	2	SW Assessments, Sedimentation Studies, Flood Forecasting
78	2157000	North Tyger River near Fairmont, SC	Broad	44.4	10/1/1950	9/30/1988	38	Flood Frequency/Forecasting, SW Assessments, POR
79	2159000	South Tyger River near Woodruff, SC	Broad	174	10/1/1933	9/30/1971	38	Flood Frequency, DNR Fisheries, SW Assessments, POR
80	2159500	Tyger River near Woodruff, SC	Broad	351	10/1/1929	9/30/1956	27	WU/Regulation, SW Assessments, POR
81	2159810	Fairforest Creek below Spartanburg, SC	Broad	23.6	5/17/1988	4/2/1998	10	Flood Frequency
82	2160000	Fairforest Creek near Union, SC	Broad	183	7/1/1940	9/30/1971	31	Flood Frequency, DNR Fisheries, SW Assessments, POR
83	2162010	Cedar Creek near Blythehood, SC	Broad	48.9	12/1/1966	9/30/1996	30	SW Assessments, Flood Frequency, POR
84	2162080	Crane Creek at Cayce, SC	Broad	66.5	1/1/1968	9/30/1974	6	Water Quality, SW Assessments
85	2145940	Little Dutchman Creek Trib at Rock Hill, SC	Catawba	-1	8/19/1986	4/1/1986	12	Flood Frequency, USGS recommended
86	2147403	Fishing Creek below Fort Lawn, SC	Catawba	280	2/15/2001	10/1/2003	2	SW Assessments, Lack of gages in middle basin
87	2148300	Colonels Creek near Leesburg, SC	Catawba	40.2	9/1/1966	10/21/2007	41	Flood Frequency, SW Assessments, Lack of gages in lower basin, POR
88	2174250	Cow Castle Creek near Bowman, SC	Edisto	23.4	10/1/1970	2/24/2013	43	Flood Frequency, SW Assessments, DNR Fisheries, POR
89	2172640	Dean Swamp Creek near Salley, SC	Edisto	31.2	10/1/1980	9/30/2000	20	SW Assessments, Flood Frequency, POR
90	2174000	Edisto River near Branchville, SC	Edisto	1720	10/1/1945	9/30/1996	51	SW Assessments, Flood Forecasting
91	2131309	Fork Creek at Jefferson, SC	Pee Dee	24.3	8/27/1976	9/30/1997	21	SW Assessments, Flood Frequency, POR
92	2132500	Little Pee Dee River near Dillon, SC	Pee Dee	524	4/1/1939	9/30/1971	32	Flood Forecasting
93	2135300	Scape Ore Swamp near Bishopville, SC	Pee Dee	96	7/26/1968	9/30/2003	35	SW Assessments, Flood Frequency, POR
94	2135500	Black River near Gable, SC	Pee Dee	401	6/1/1951	9/30/1992	41	SW Assessments, Flood Forecasting, POR
95	2176380	Tributary to Coosawhatchie R at Allendale, SC	Salkehatchie	1.5	12/13/1985	11/21/2005	21	Flood Frequency, POR, USGS recommended
96	2176000	Combahce River near Yemassee, SC	Salkehatchie	1100	6/1/1951	6/30/1957	6	SW Assessments, DNR Fisheries, Coastal Studies
97	2176517	Coosawhatchie River near Early Branch, SC	Salkehatchie	382	10/1/1995	9/30/1998	3	SW Assessments, Coastal Studies
99	2169505	Rocky Branch at Pickens St. at Columbia, SC	Saluda	2.2	6/7/1985	6/28/2004	20	Flood Frequency, POR, USGS recommended
100	2166970	Ninety-six Creek near Ninety-six, SC	Saluda	17.4	10/1/1980	9/30/2001	21	SW Assessments, Flood Frequency/Forecasting, POR
101	2169550	Congaree Creek at Cayce, SC	Saluda	122	10/1/1959	9/30/1980	21	SW Assessments, Flood Frequency/Forecasting, POR
102	2169630	Big Beaver Creek near St. Matthews, SC	Saluda	10	7/16/1966	9/30/1993	27	SW Assessments, Flood Frequency, POR
103	2169670	Cedar Creek below Myers Creek near Hopkins, SC	Saluda	66.9	11/13/1980	9/30/1985	5	SW Assessments
98	2176720	May River near Bluffton, SC	Savannah	20.9	6/6/2002	6/9/2004	2	Coastal Studies
104	2185200	Little River near Walhalla, SC	Savannah	72	3/4/1967	9/30/2003	36	DNR Fisheries, SW Assessments, Flood Frequency, POR
105	2197315	Upper Three Runs at Road A (SRS), SC	Savannah	203	6/6/1974	9/30/2002	28	SW Assessments, DNR Fisheries, POR



Legend

- ▼ Recommended Monitoring Site
- ▲ Funded Monitoring Site
- Recommended Monitoring Reach
- Funded Monitoring Reach
- ▲ Active Streamflow Monitoring Site

Basin

- Broad
- Catawba
- Edisto
- Pee Dee
- Salkehatchie
- Saluda
- Santee
- Savannah

Map prepared by the Land, Water and Conservation Division of the South Carolina Department of Natural Resources (September 2019).