

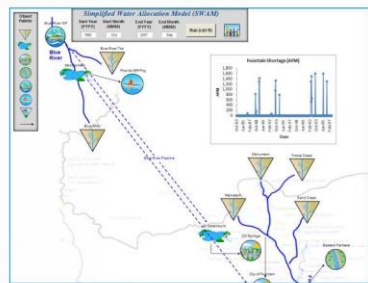
South Carolina Surface Water Quantity Modeling Project

Santee River Basin Meeting No. 1 – Model Framework

John Boyer, PE, BCEE
Nina Caraway

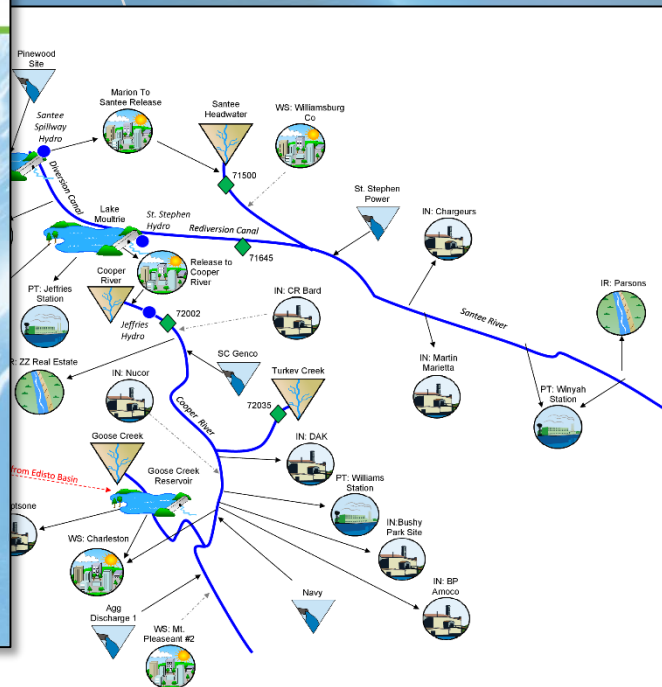
March 2, 2016

Simplified Water Allocation Model (SWAM)



VERSION 3.0 USER'S MANUAL

Contact:
Tim Cox, Ph.D., P.E.
CDM Smith
555 17th Street, Suite 1100
Denver, Colorado 80202
email: coxtj@cdmsmith.com



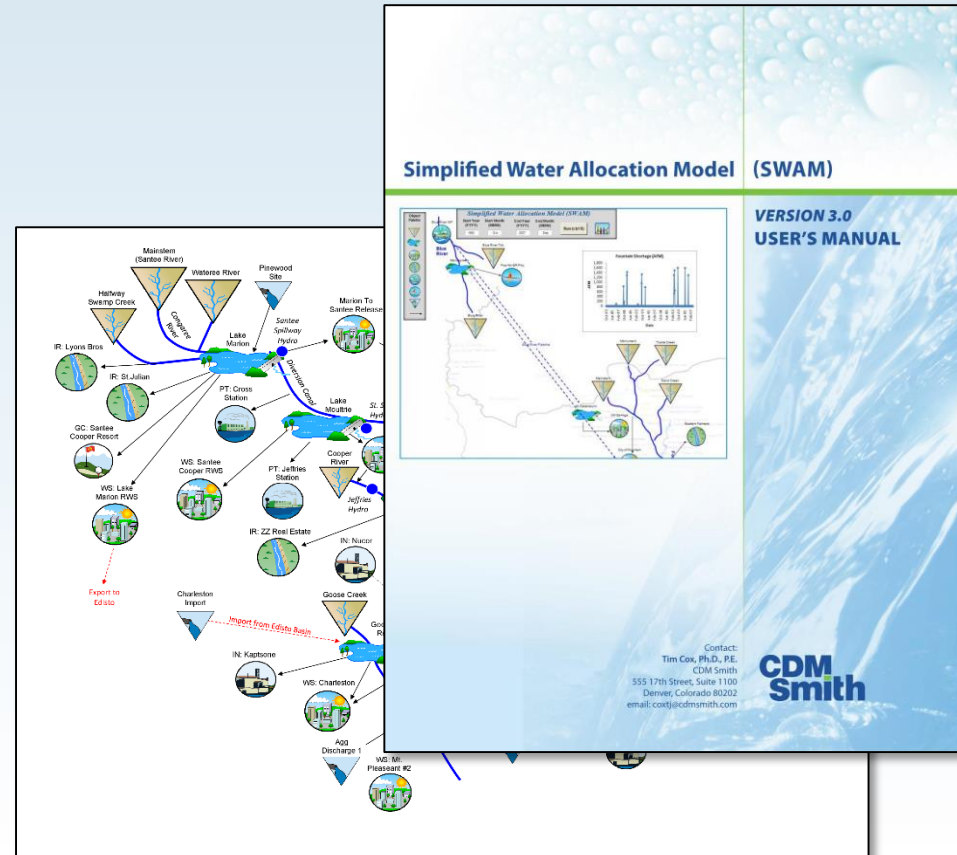
Project Purpose

- Build surface water quantity models capable of:
 - Accounting for inflows and outflows from a basin
 - Accurately simulating streamflows and reservoir levels over the historical inflow record
 - Conducting “What if” scenarios to evaluate future water demands, management strategies and system performance.



Simplified Water Allocation Model (SWAM)

- Developed in response to an increasing need for a desktop tool to facilitate regional and statewide water allocation analysis
- Calculates physically and legally available water, diversions, storage consumption and return flows at user-defined nodes
- Used to support large-scale planning studies in Colorado, Oklahoma, Arkansas and Texas



The Simplified Water Allocation Model is...

- a water accounting tool
- a WHAT-IF simulation model
- a network flow model that traces water through a natural stream network, simulating withdrawals, discharges, storage, and hydroelectric operations
- not precipitation-runoff model (e.g., HEC-HMS)
- not a hydraulic model (e.g. HEC-RAS)
- not a water quality model (e.g., QUAL2K)
- not an optimization model
- not a groundwater flow model (e.g., MODFLOW)

The Models Can Be Used To...

- Determine surface-water availability
- Predict where and when future water shortages would occur
- Test alternative water management strategies, new operating rules, and “what-if” scenarios
- Consolidate hydrologic data
- Evaluate the impacts of future withdrawals on instream flow needs
- Evaluate interbasin transfers
- Support development of Drought Management Plans
- Compare managed flows to natural flows

River Basin Flow and Operations Models

Similarities between **SWAM**, **OASIS**, **CHEOPS**, and **RiverWare**:

- Used in major river basin studies and/or statewide water plans
- Operating Rules of varying complexity
- Monthly and Daily Timesteps
- Visual Depiction of the River Network

Unique Features:

SWAM

- Familiar and adaptable environment: Visual Basic and Spreadsheets
- Built in functions for reservoirs, river operations, discharges, irrigation, return flows, etc.

OASIS

- Built in Probability Analysis for Real-Time Ops
- Optimization toward objectives in each timestep

CHEOPS

- Tailored specifically for hydropower
 - Energy Calculations
 - Reservoir Tracking
- Familiar Visual Basic programming

RiverWare

- Fully linked graphical network development
- 3 modes:
 - Pure simulation
 - Rules-based simulation
 - Optimization

Simplified Water Allocation Model (SWAM)

- Object-oriented tool in which a river basin and all of its influences can be linked into a network with user defined priorities
- Resides within Microsoft Excel
- Point and click setup and output access

Input Forms

Agricultural Water User

Main | Source Water | Return Flows

User Name: [] Delete Node

Multiple Sources of Water ?

Supplemental Supply/Demand Alternatives

Transbasin Import

Groundwater

Demands

user-defined

ag calculations

Edit Demands

Agricultural Water User

Main | Source Water | Return Flows

Return Flow Locations

single point

multiple points

Receiving Stream: []

RF Location (mi): [0]

Time Lag (months): [0]

Monthly Return Flows

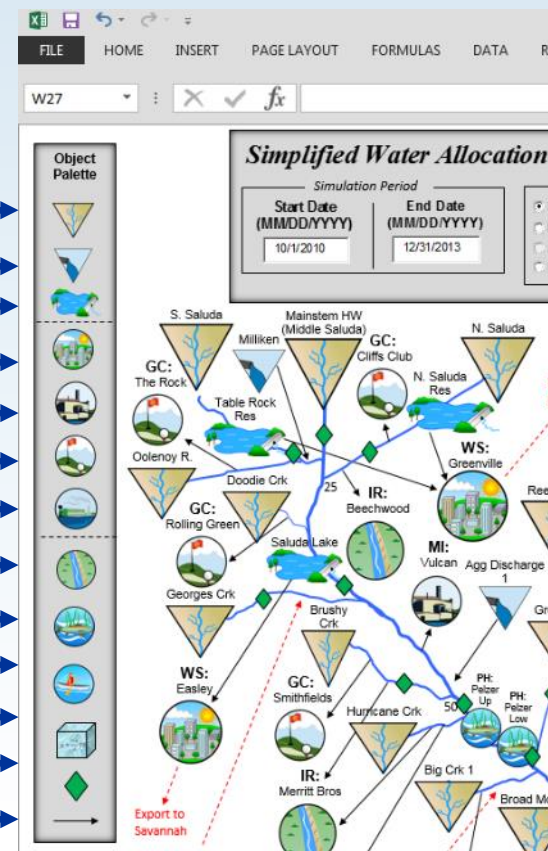
	Jan	Feb	Mar	Apr	May	Jun	Jul	Aug	Sep	Oct	Nov	Dec
Return Flow %	0	0	0	0	0	0	0	0	0	0	0	0

Save Close

Water
User
Objects

Objects

- Tributaries
- Discharges
- Reservoirs
- Municipal
- Industrial
- Golf Courses
- Power Plants
- Agriculture
- Instream Flow
- Recreational Pool
- Aquifer
- USGS Gage
- Interbasin Transfer



Simplified Water Allocation Model (SWAM)

- Intuitive & Transparent** Resides within and interfaces directly with Microsoft Excel
- Ease-of-Use** Point-and-click setup and output access
- Simple & Robust** Mass balance calculations, but handles operating rules, use priorities, etc.

Input Forms

Node Output

SWAM Arkansas Basin 2014 for team 6-20-14.xlsm - Microsoft

	A	B	EY	EZ	FA	FB	FC	FD	FE	FF
Output							Water Right (AFM)	Ditch Capacity (AFM)	Storage Capacity (AE)	
1			Priority Rank	Reach (mi)	Location					
2			Pueblo4	32	Mainstem	136	420	1,000,000	5,000	
3			Physically Avail. (AFM)	Legally Avail. (AFM)	Diverted (AFM)	Storage (AF)	GW Pumping (AFM)	Demand (AFM)	Shortage (AFM)	Return Flow (AFM)
4		Min	1,200	0	0	0	0	0	0	0
5		Max	423,253	420	420	5,000	0	0	0	0
6		Avg	44,588	117	33	4,340	0	0	0	0
7		Oct-81	14,837	0	0	0	0	0	0	0
8		Nov-81	23,186	0	0	0	0	0	0	0
9		Dec-81	24,424	0	0	0	0	0	0	0
10		Jan-82	17,870	0	0	0	0	0	0	0
11		Feb-82	16,694	0	0	0	0	0	0	0
12		Mar-82	25,120	0	0	0	0	0	0	0
13		Apr-82	11,977	0	0	0	0	0	0	0
14		May-82	35,025	0	0	0	0	0	0	0
15		Jun-82	146,407	0	0	0	0	0	0	0
16		Jul-82	97,301	0	0	0	0	0	0	0

Simplified Water Allocation Model (SWAM)

- Supports multiple layers of complexity for development of a range of systems, for example...

A Reservoir Object can include:

1. Basic hydrology dependent calculations
2. Operational rules of varying complexity such as prescribed releases, conditional releases, or hydrology dependent releases.

Reservoir

A screenshot of the 'Reservoir' configuration window in the SWAM software. The window has a title bar 'Reservoir' and a 'Main' tab. It contains several sections for configuring the reservoir's properties and behavior.

Reservoir Name: [Dropdown menu] **Delete Node** **Storage Capacity (AF)** [Input field] **Initial Storage (AF)** [Input field] Offline Online

Evaporation
 Inches/day % Volume Input Timeseries

Monthly Rates

Month	Evap. Rates (in./day)
Jan	
Feb	
Mar	
Apr	
May	
Jun	
Jul	
Aug	
Sep	

Area-Capacity Table
 Simple Detailed

Volume (AF)	Area (ac)

Reservoir Releases
Receiving Stream: [Dropdown menu] Simple Advanced
Release Location (mi) [Input field: 0]

User Defined Releases

Month	Min. Release (AFM)	(CFS)
Jan		
Feb		
Mar		
Apr		
May		
Jun		
Jul		
Aug		
Sep		

SWAM Model Main Screen

Simplified Water Allocation Model (SWAM)

Simulation Period

Start Date (MM/DD/YYYY): 01/01/1983

End Date (MM/DD/YYYY): 12/31/2013

Simulation Type

Monthly Planning Prior Appropriations
 Daily Planning Riparian Water Rights
 Short Term Forecasting
 Firm Yield Calculator

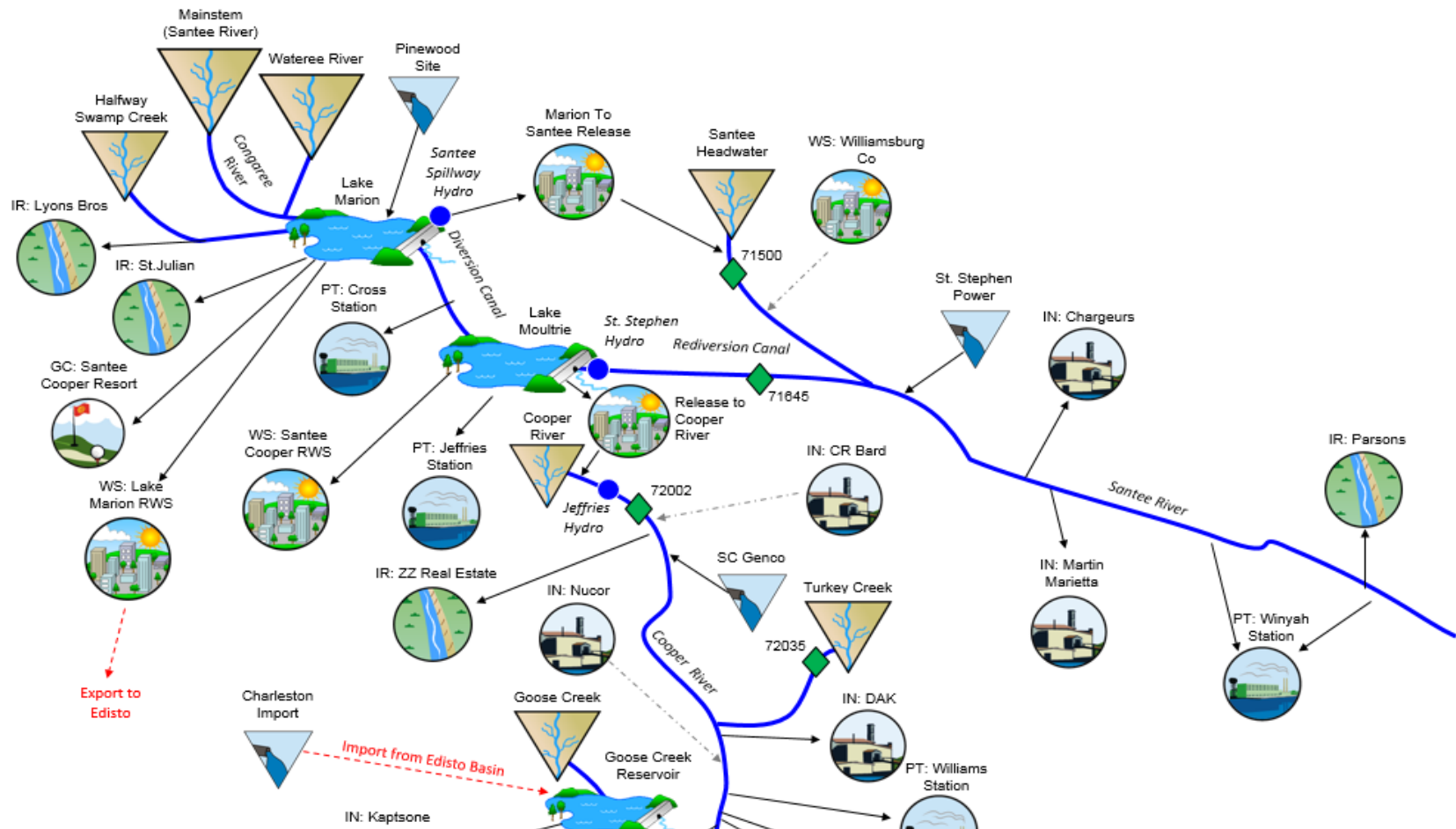
Run (ctrl R)

Input Summaries and Outputting

Input & Output Units

AF, AFM, AFD MG, MGD, CFS m³, m³/d, m³/s

Object Palette



Santee River Basin

MODELING DATA REQUIREMENTS

Data Collected for Model Development

- USGS daily flow records
- Historical daily rainfall and evaporation rates
- Historical Operational Data
 - Withdrawals (municipal, industrial, agricultural, golf courses)
 - Discharges
 - Reservoir elevation
- Reservoir bathymetry and operating rules
- Subbasin characteristics (GIS)
 - Drainage area
 - Land use
 - Basin slope
- Other data, studies, and models

Santee River Basin

UNIMPAIRED FLOWS (UIF)

UIF Definition and Uses

- **Definition:** Estimate of natural historic streamflow in the absence of human intervention in the river channel:
 - Storage
 - Withdrawals
 - Discharges and Return Flow
- ***Unimpaired Flow*** =
Measured Gage Flow + River Withdrawals + Reservoir Withdrawals – Discharge to Reservoirs – Return Flow + Reservoir Surface Evaporation – Reservoir Surface Precipitation + Upstream change in Reservoir Storage + Runoff from Previously Unsubmerged Area
- **Fundamental input** to the model at headwater nodes and tributary nodes
- **Comparative basis** for model results

Primary UIF Data Sources

Documented

- USGS Gage flows
- DHEC records of M&I withdrawals and discharges
- Reservoir operator records of water levels
- Reported agricultural withdrawals
- GIS Data layers

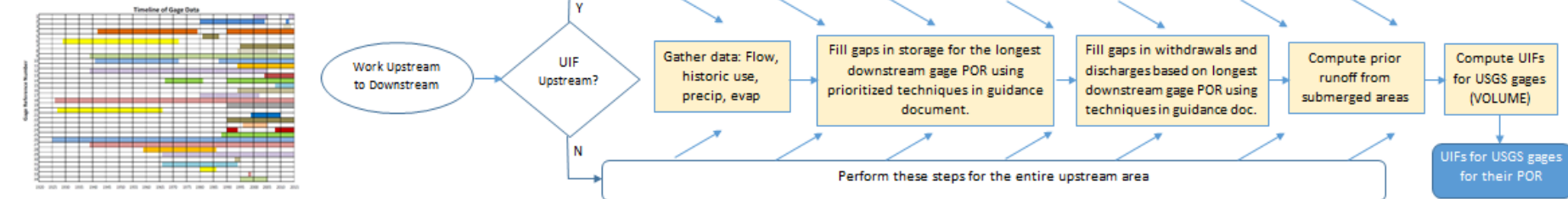
Estimated

- Direct contact with users regarding historic use patterns
- Operational hindcasting
- Agricultural water use modeling

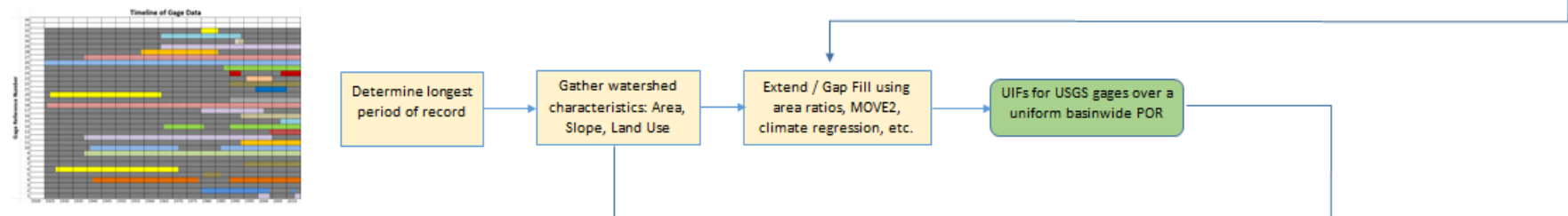
Basinwide UIF Calculation Process

Stepwise Procedure for UIF Calculation – Saluda Basin

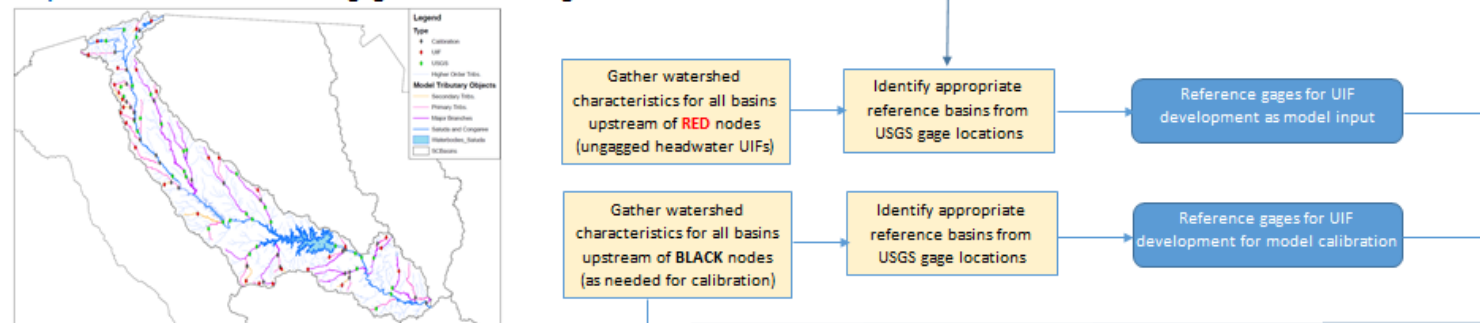
Step 1: UIFs for USGS Gages for their individual Periods of Record



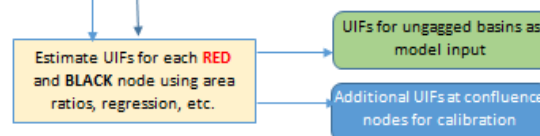
Step 2: Extension of UIFs for USGS Gages throughout the LONGEST Period of Record



Step 3: Correlation between Ungaged Basins and Gaged Basins

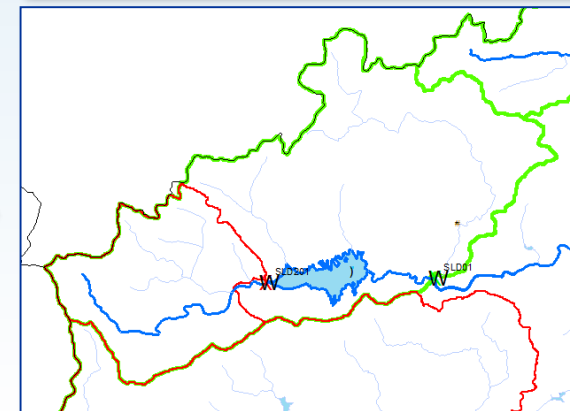
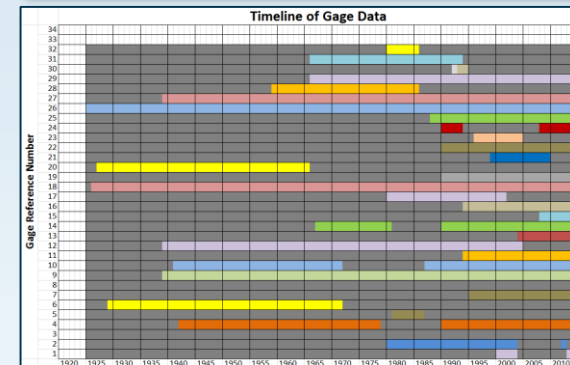
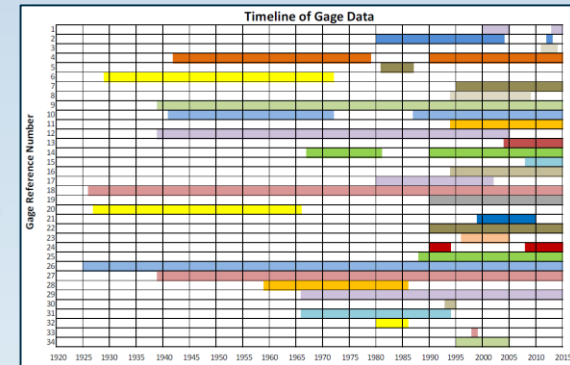


Step 4: UIFs for Ungaged Basins

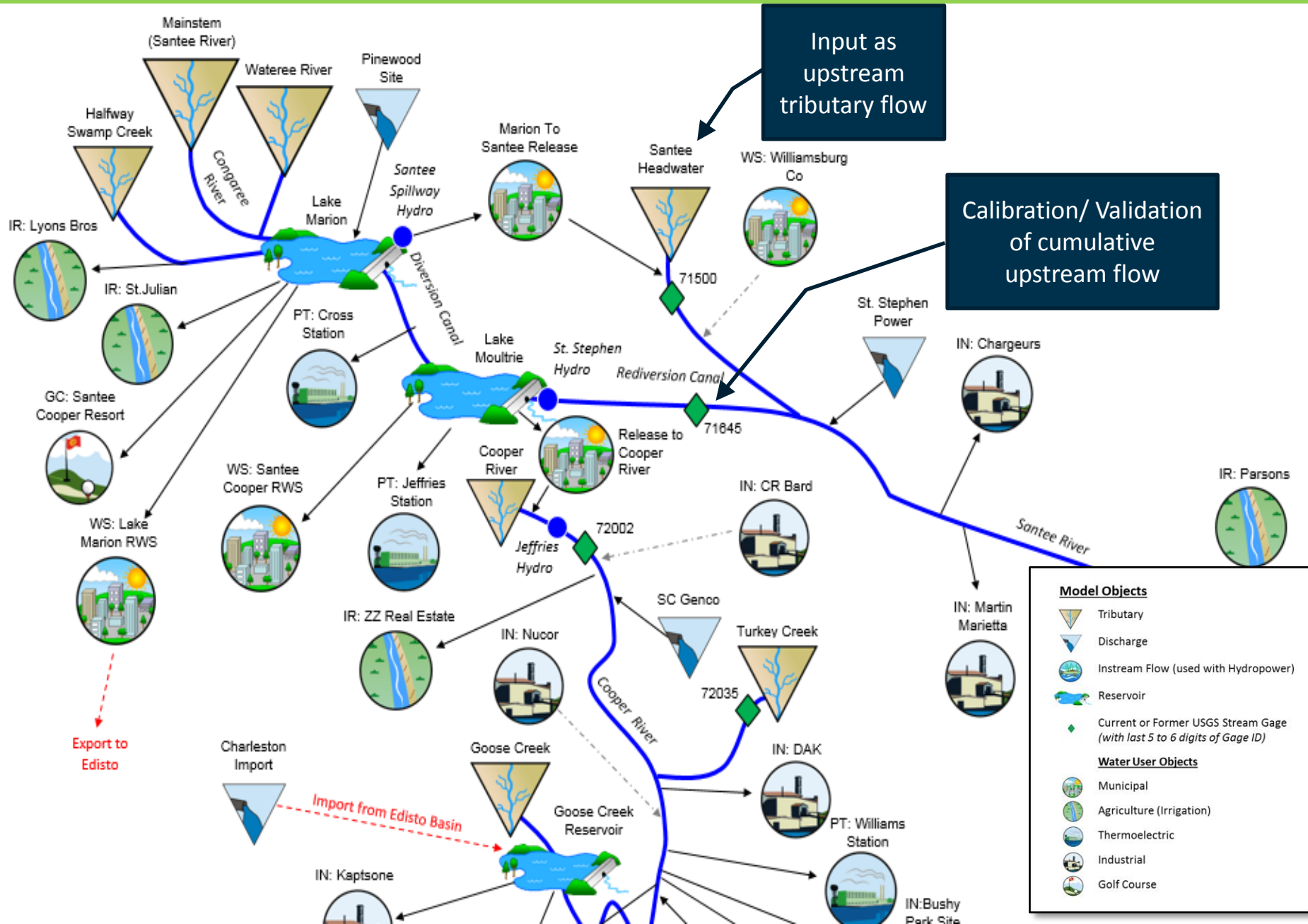


Four Steps in UIF Calculation Process

- **Step 1:** UIFs for USGS Gages for individual periods of record
 - Involves extension of operational data
- **Step 2:** Extension of UIFs for USGS Gages through the LONGEST period of record
- **Step 3:** Correlation between ungaged basins and gaged basins
- **Step 4:** UIFs for ungaged basins



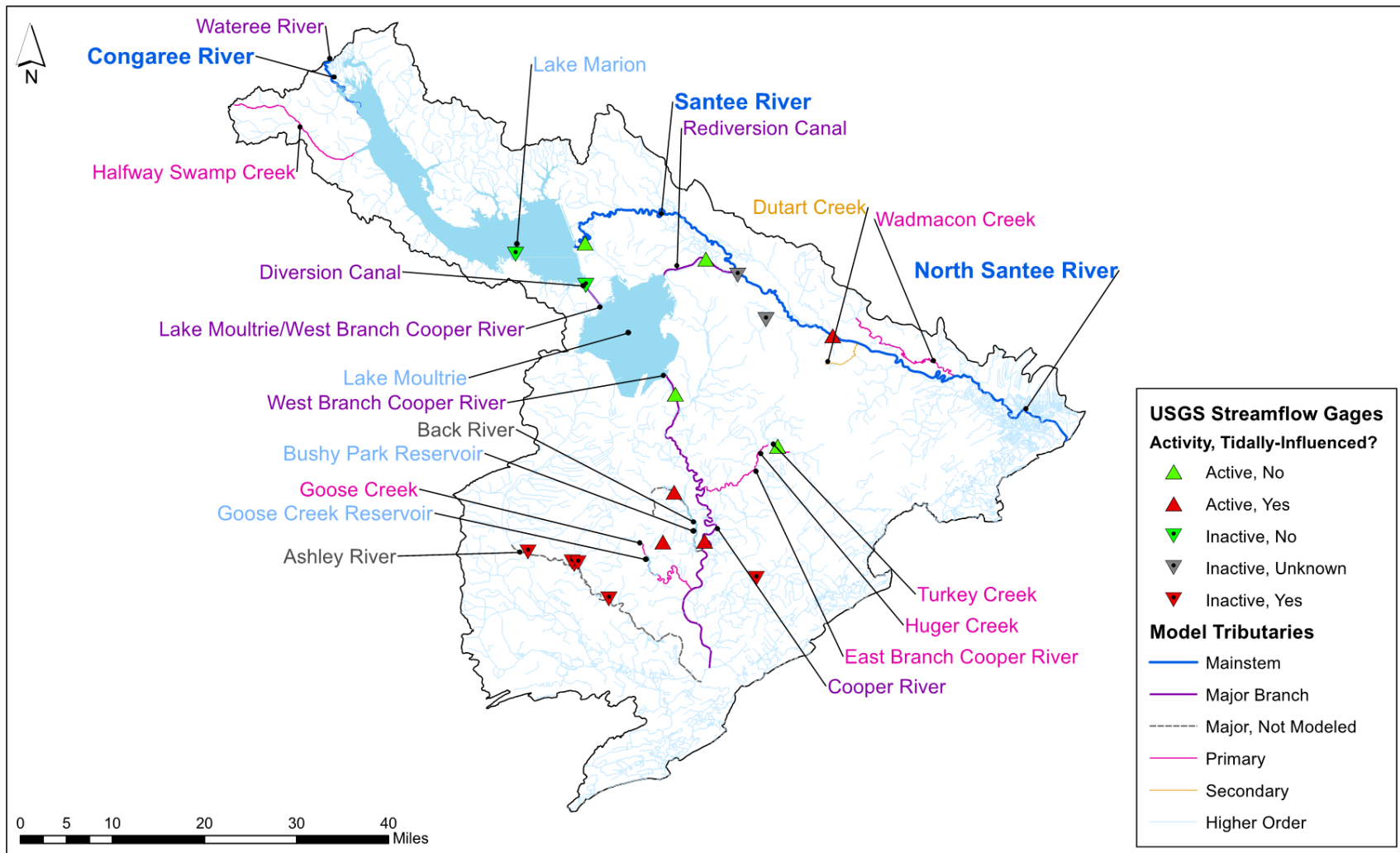
How UIFs are Used in SWAM



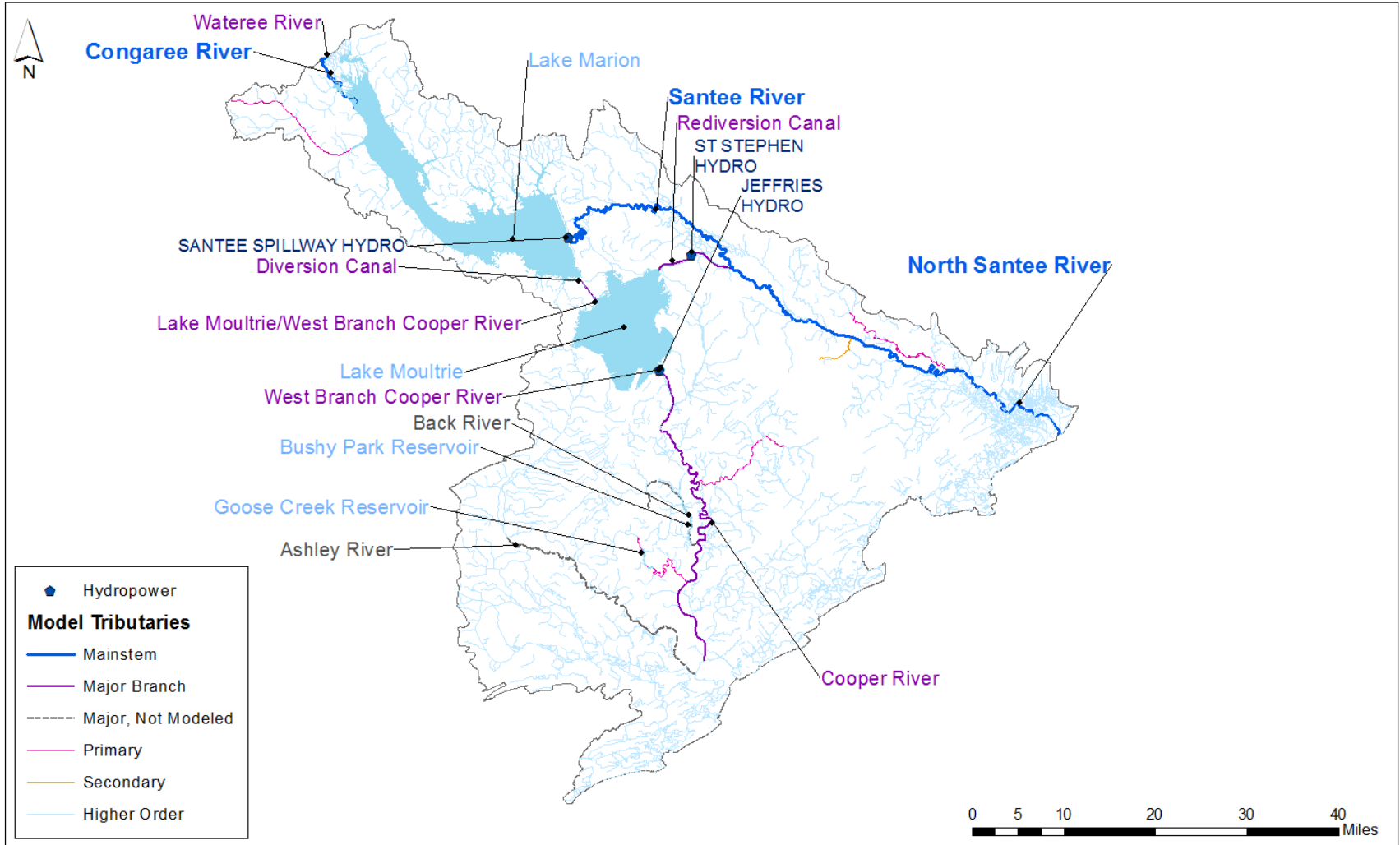
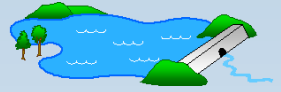
Santee River Basin

OVERVIEW OF MODEL FRAMEWORK

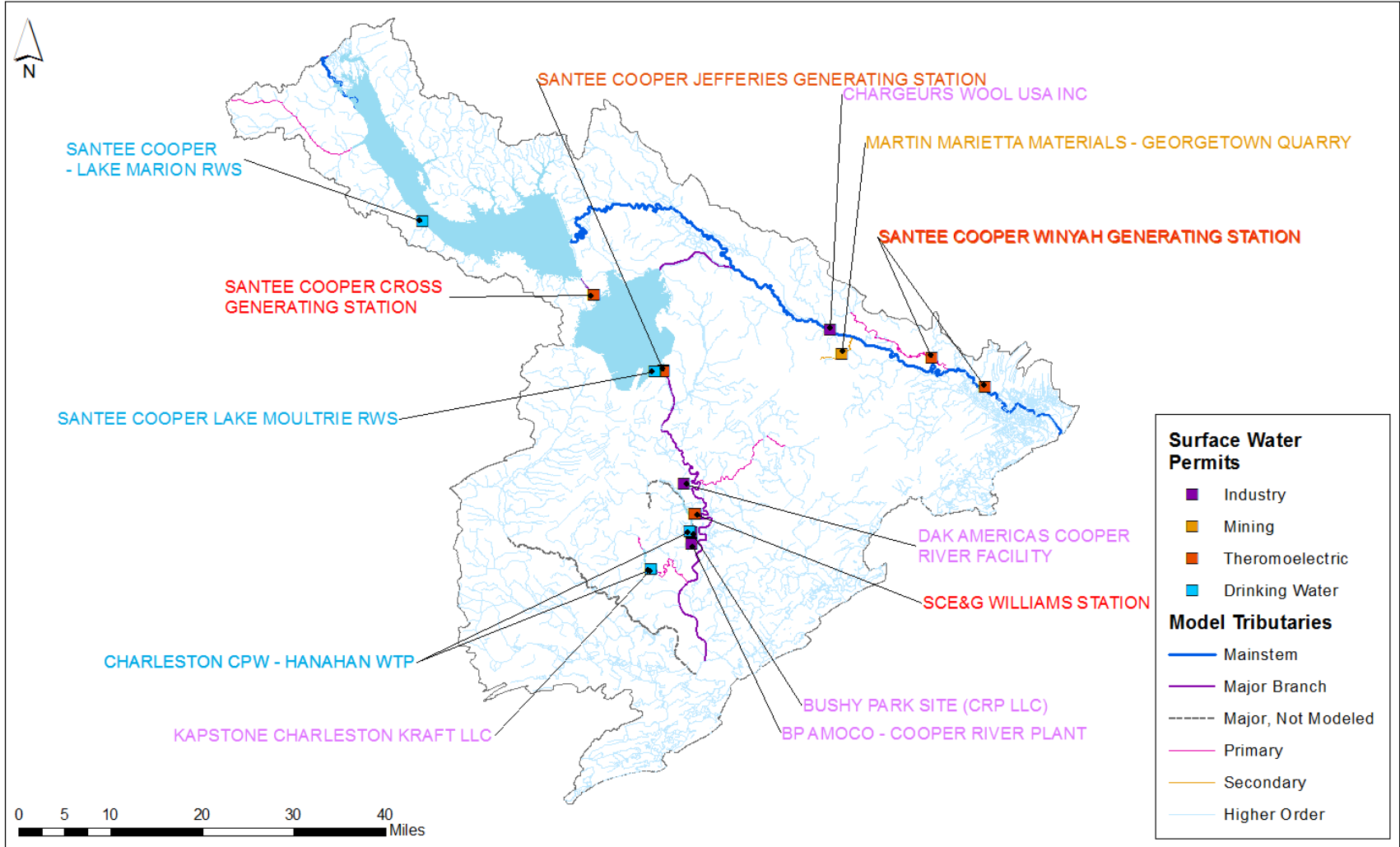
Santee Basin Model Tributaries



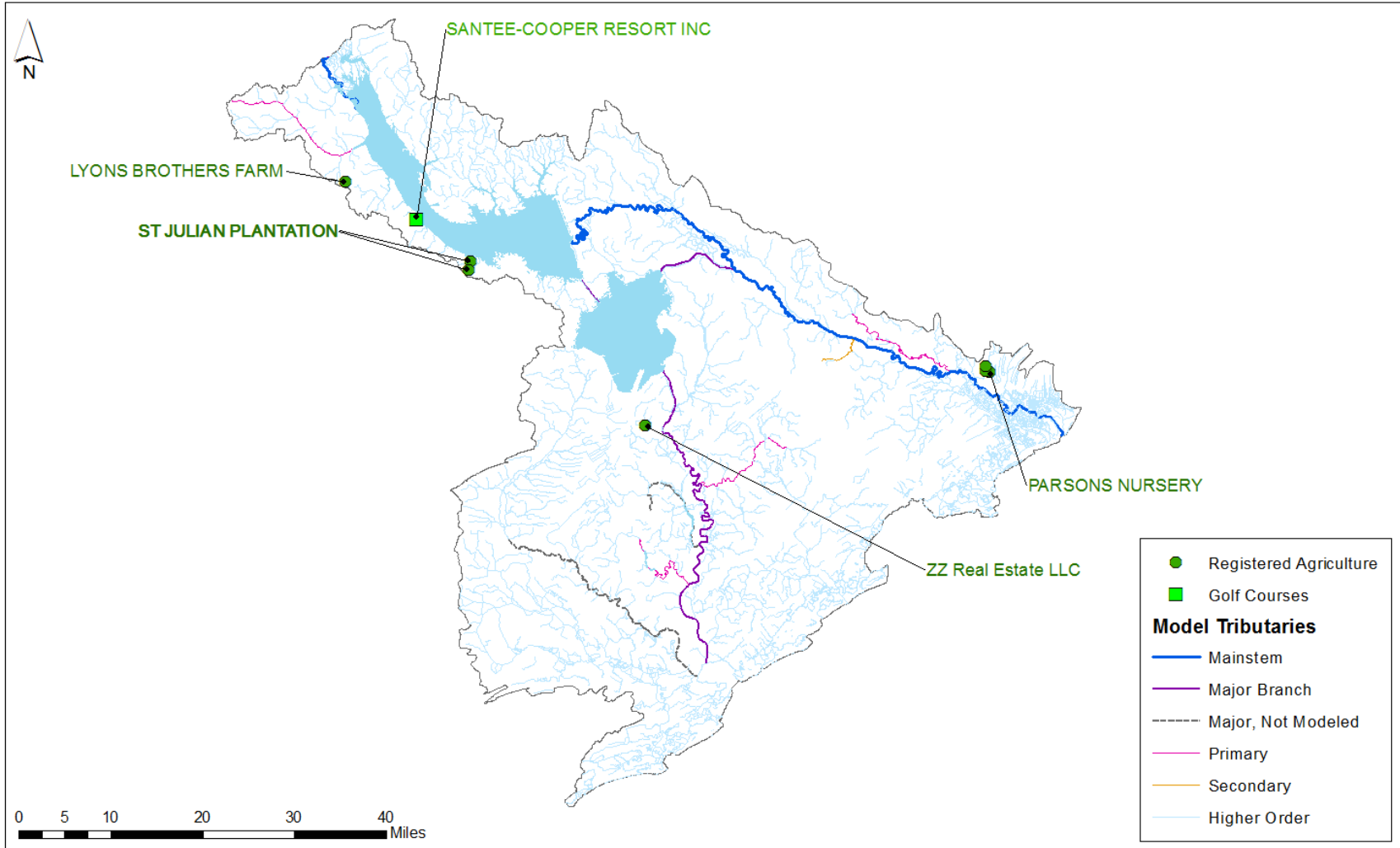
Reservoirs and Hydroelectric



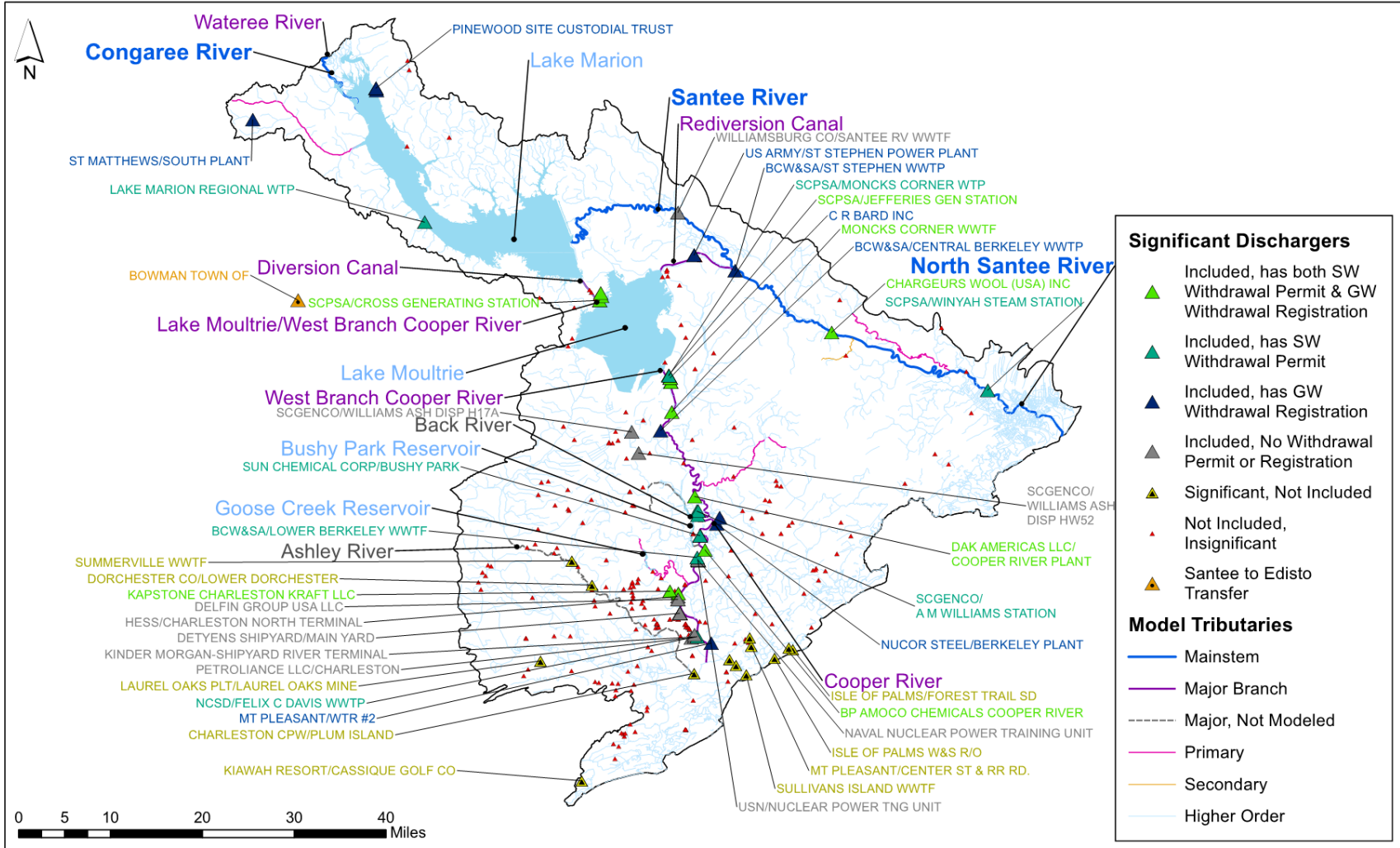
M&I and Energy Surface Water Withdrawals



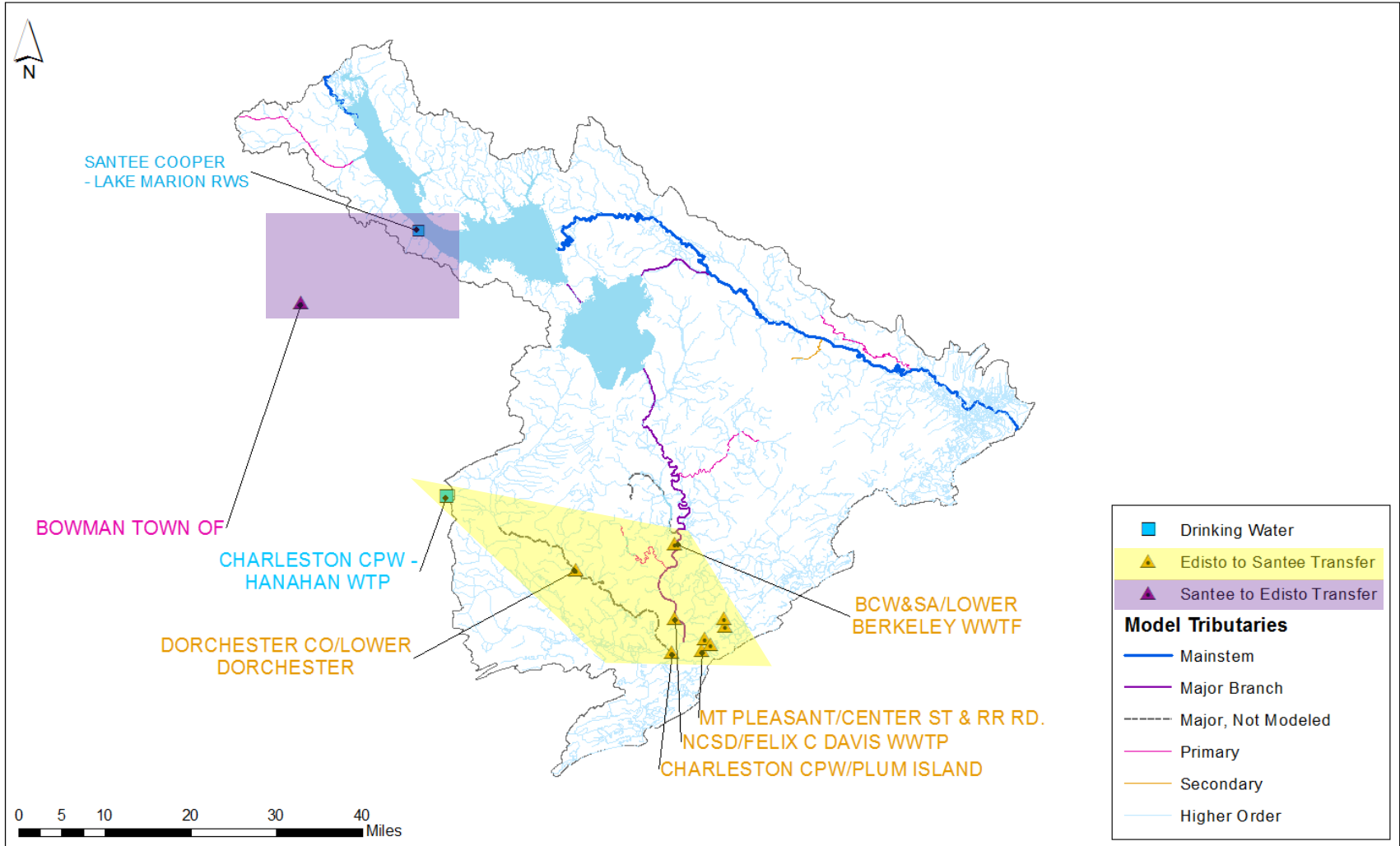
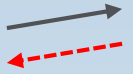
Surface Water Withdrawals for Irrigation



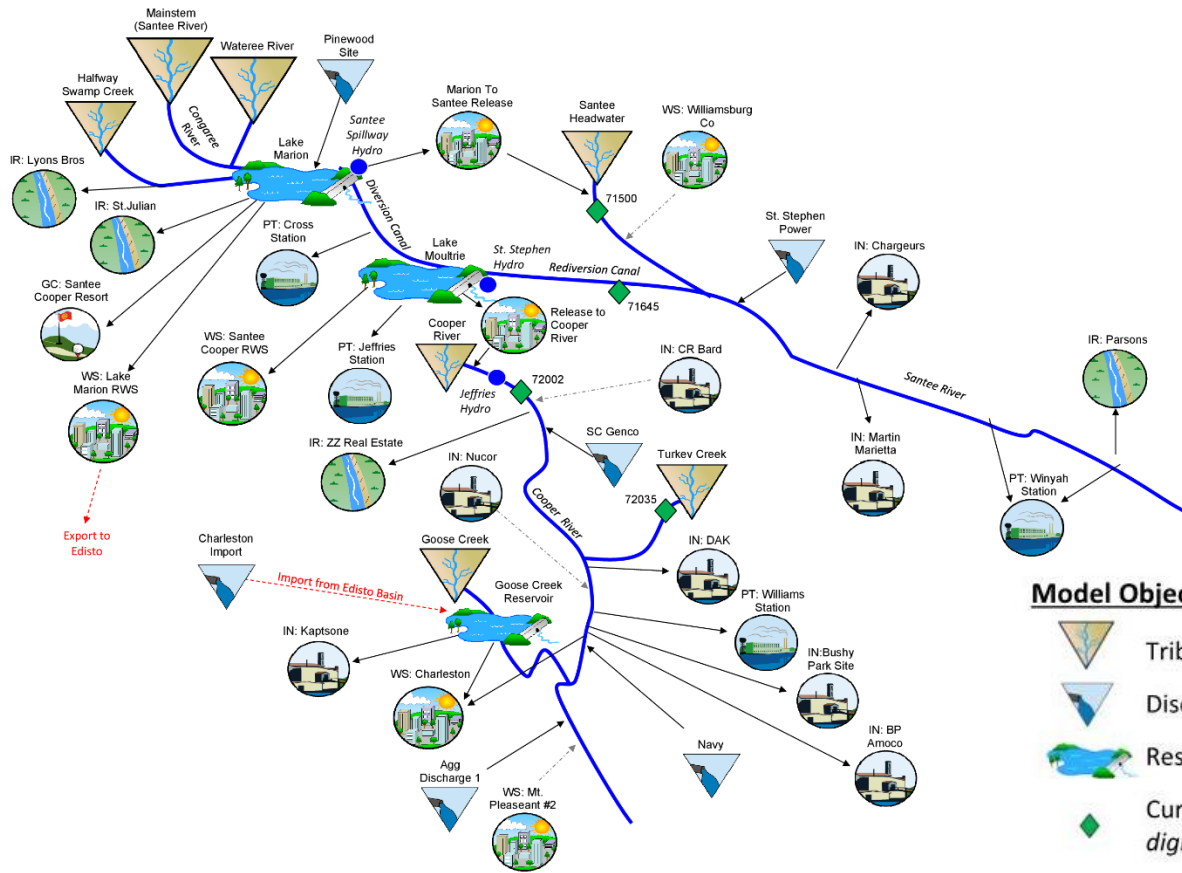
Discharges to Surface Water



Interbasin Transfers



Santee Basin – SWAM Framework






Model Objects

-  Tributary
-  Discharge
-  Reservoir
-  Current or Former USGS Stream Gauge (with last 5 to 6 digits of Gage ID)

Water User Objects

-  Municipal
-  Agriculture (Irrigation)
-  Thermoelectric or Nuclear
-  Industrial or Mining
-  Golf Course (Irrigation)

-  Hydropower
-  Import or Export (Interbasin Transfer)
-  Discharge from a Groundwater User*

* The associated Water User Object does not have a Surface Water Withdrawal.

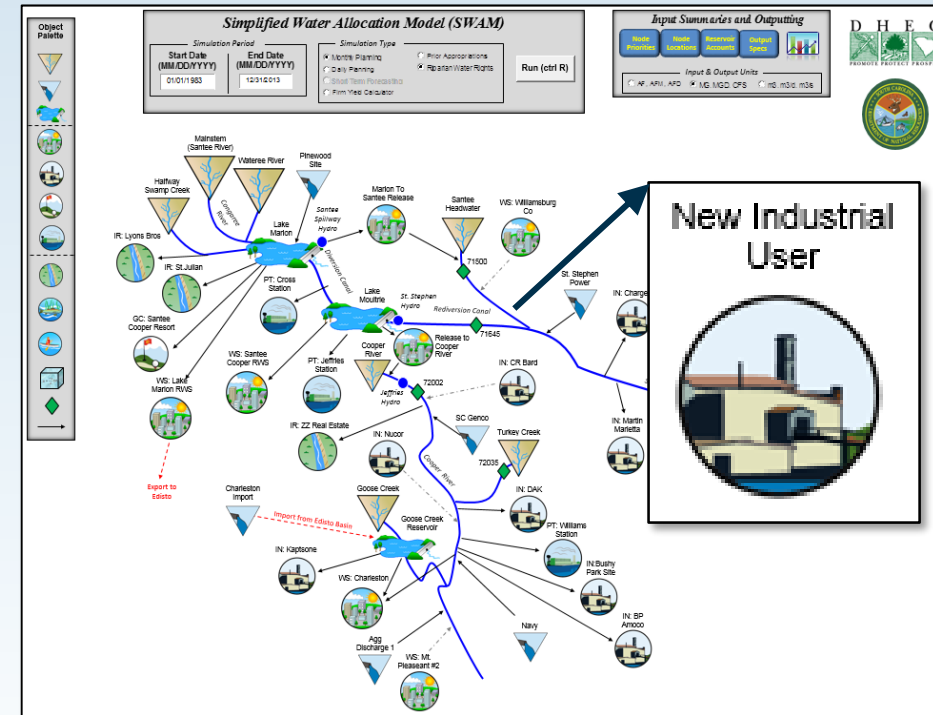
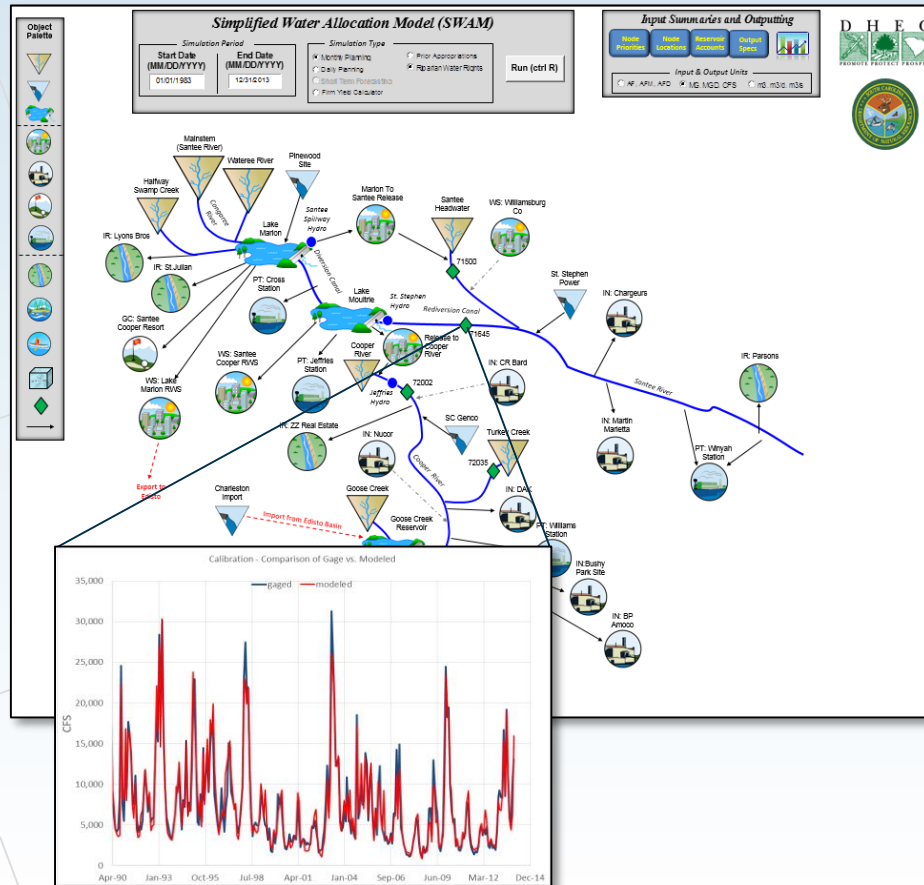
Santee River Basin

MODEL SETUP

Two Versions of Every Model

Calibration with UIFs and Historic Use Records

Planning with UIFs, Current Uses, and User-Defined Future Uses



Tributary Input Form

U26

Simplified Water Allocation Model (SWAM) | *Input Summaries and Outputting* | D H E C

Simulation Period
Start Date (MM/DD/YYYY): 01/01/1983 | End Date (MM/DD/YYYY): 12/31/2013

Tributary

Tributary Name: **Delete Tributary** **Headwater Flows**

Confluence Stream: **Confluence Location (mi):**

Spatial Flow Changes

Subbasin Flow Factor (unitless)	Reach Length (mi)
<input type="text" value="1"/>	<input type="text" value="10"/>

Comments:

Save **Close**

Reservoir Input Form

U26 : X ✓ fx

Simplified Water Allocation Model (SWAM)

Input Summaries and Outputting



Reservoir
X

Reservoir Name:

Delete Node

Storage Capacity (AF)

Initial Storage (AF)

Offline
 Online

Evaporation

Inches/day
 % Volume
 Input Timeseries

Monthly Rates

Month	Evap. Rates (in./day)
Jan	
Feb	
Mar	
Apr	
May	
Jun	
Jul	
Aug	
Sep	
Oct	
Nov	
Dec	

Area-Capacity Table

Simple
 Detailed

Month	Volume (AF)	Area (ac)
Jan		
Feb		
Mar		
Apr		
May		
Jun		
Jul		
Aug		
Sep		
Oct		
Nov		
Dec		

Reservoir Releases

Receiving Stream:

Simple
 Advanced

Release Location (mi)

User Defined Releases

Month	Min. Release (AFM)	(CFS)
Jan		
Feb		
Mar		
Apr		
May		
Jun		
Jul		
Aug		
Sep		
Oct		
Nov		
Dec		

Comments:

Save

Close



Water User Input Form – Main

U26

Water User

Main | Water Usage | Source Water | Return Flows

Water User Name: **Delete**

Supplemental S...

Cons

Reca

Ag T

Comments:

Water User

Main | Water Usage | Source Water | Return Flows

Monthly User Distribution

Manual

M&I

Agriculture

Monthly Baseline Usage

Month	Mont Usag
Jan	
Feb	
Mar	
Apr	
May	
Jun	
Jul	
Aug	
Sep	
Oct	
Nov	
Dec	

(AFM)

Annual Baseline Usage

Total Use

Input Format

Source Stream:

Source Water Type

Direct River

Reservoir

Groundwater

Downstream Location (mi)

Priority Date

1/1/2008

Ditch Capacity

Permit Limit

(AFM) (AFM)

Seasonal Permit

Storage Withdrawal Permit

Save

Close

Storage

Reservoir Name:

(AF) Storage Capacity

(AFY) Storage Right

Water Year Start Mo. (1 - 12)

1

Carry Over Rule

Identifying Notes:

Object Palette

D H E C

UNIVERSITY OF CALIFORNIA

LOCK

WS: York

60381

Nursery

IN: Chemtrade

IN: Carlisle Finishing

GC:

60380

60382

60383

60384

60385

60386

60387

60388

60389

60390

60391

60392

60393

60394

60395

60396

60397

60398

60399

60400

60401

60402

60403

60404

60405

60406

60407

60408

60409

60410

60411

60412

60413

60414

60415

60416

60417

60418

60419

60420

60421

60422

60423

60424

60425

60426

60427

60428

60429

60430

60431

60432

60433

60434

60435

60436

60437

60438

60439

60440

60441

60442

60443

60444

60445

60446

60447

60448

60449

60450

60451

60452

60453

60454

60455

60456

60457

60458

60459

60460

60461

60462

60463

60464

60465

60466

60467

60468

60469

60470

60471

60472

60473

60474

60475

60476

60477

60478

60479

60480

60481

60482

60483

60484

60485

60486

60487

60488

60489

60490

60491

60492

60493

60494

60495

60496

60497

60498

60499

60500

Agricultural Water User Input Forms

U26
Agricultural Water User

Main
Source Water
Return Flows

User Name:

Delete Node

Supplemental Supply/Demand Alternatives

Transbasin Import

Groundwater

Comments:

Main
Water Usage
Source Water
Return Flows

Blaney Criddle ET

Original

Modified

Irrigated Acres

0

Ditch Loss (%)

10

Irrigation Efficiency (%)

90

Elevation (ft absl)

0

Latitude (degr)

40

Crops

Edit Coeffs	% of Total Acreage	Start Month
▼	0	5
▼	0	5
▼	0	5
▼	0	5
▼	0	5
▼	0	5

Climate

	Temp. (F)	Precip. (in.)
Jan	30	0.5
Feb	35	0.6
Mar	45	1.2
Apr	55	1.6
May	75	2.3
Jun	80	1.6
Jul	80	1.9
Aug	80	1.4
Sep	65	1.1
Oct	50	1.0
Nov	45	0.8
Dec	40	0.5

Calculated River Headgate Demand

Jan	Feb	Mar	Apr	May	Jun	Jul	Aug	Sep	Oct	Nov	Dec	Tot.
0	0	0	0	0	0	0	0	0	0	0	0	0

(AFM)

Calculated Potential Consumptive Use of Irrigation Water

Jan	Feb	Mar	Apr	May	Jun	Jul	Aug	Sep	Oct	Nov	Dec	Tot.
0	0	0	0	0	0	0	0	0	0	0	0	0

(AFM)

Save / Calculate

Close

Object Palette

-
-
-
-
-
-
-
-
-

Instream Flow Input Form

U26



Instream Flows

Water Right

Instream Flow Name: **Delete Node** **Target Stream:** **Downstream Location (mi)**

Priority Date

Rules

- Seasonal WR**
- TNC IHA Methodology**

Avg. Monthly Flow Rights

Jan	Feb	Mar	Apr	May	Jun	Jul	Aug	Sep	Oct	Nov	Dec
<input type="text"/>	<input type="text"/>	<input type="text"/>	<input type="text"/>	<input type="text"/>	<input type="text"/>	<input type="text"/>	<input type="text"/>	<input type="text"/>	<input type="text"/>	<input type="text"/>	<input type="text"/>

(CFS)

Comments:

Save **Close**



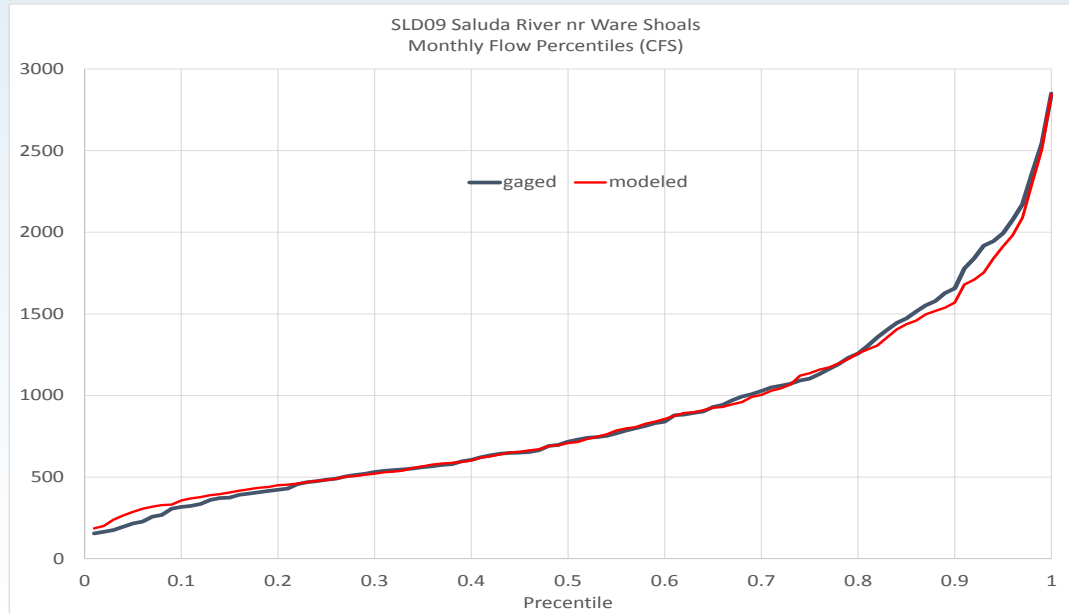
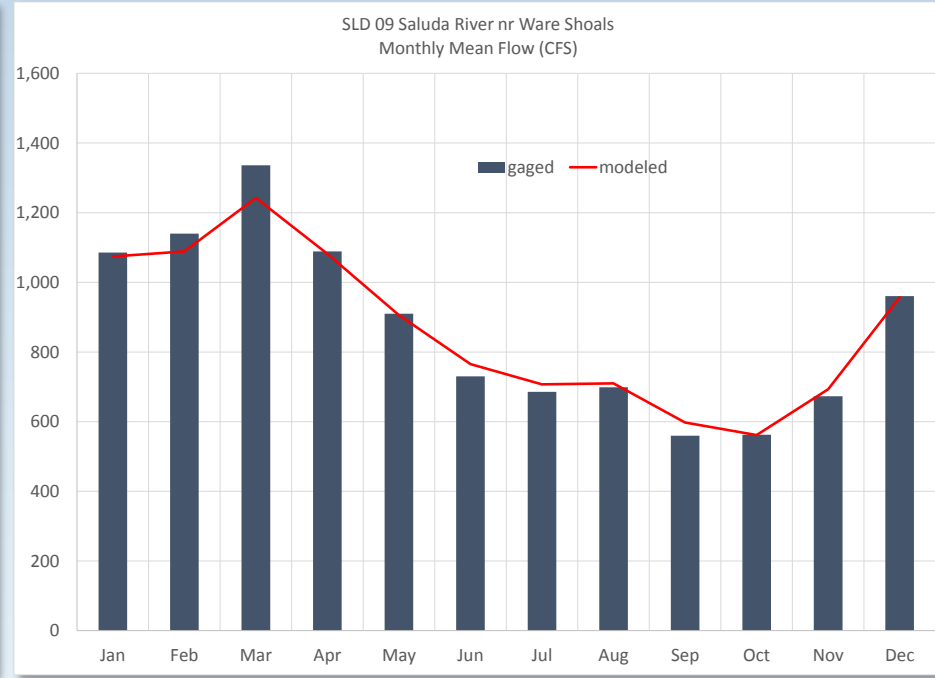
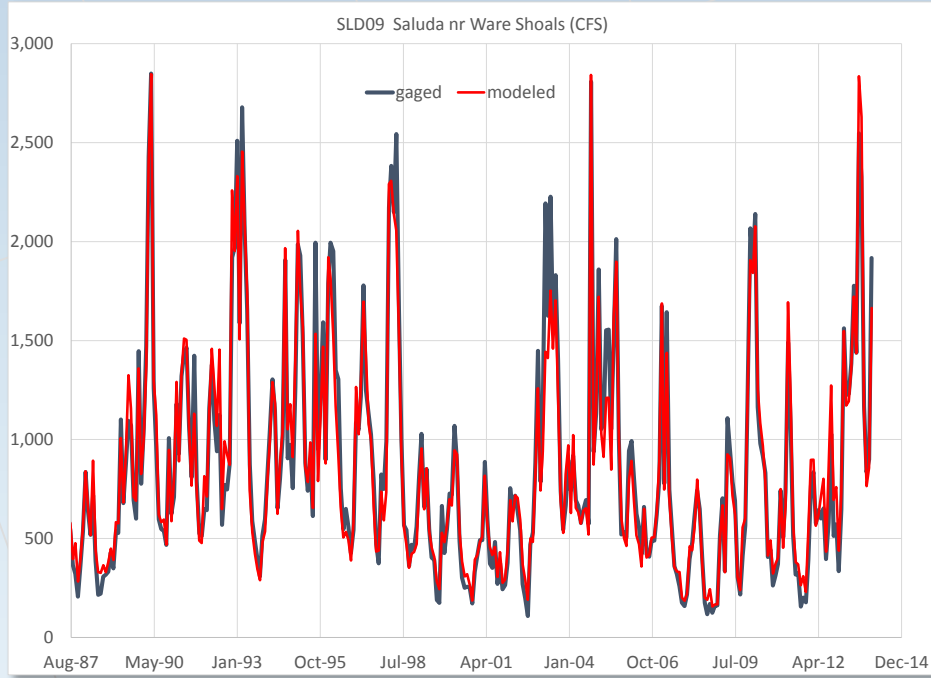
Santee River Basin

MODEL VALIDATION

SWAM Calibration/Validation

- Calibration targets = downstream flow gage records
- Calibration parameters =
 - reach gains/losses,
 - unaged flow records,
 - reservoir operations
 - ag return flow percentages, locations, lags
- Performance metrics =
 - Annual avg flows (overall water balance)
 - Monthly avg flows (seasonality)
 - Flow percentile distributions (variability, extreme events)
 - Flow timeseries (specific timings, operations)
 - Reservoir storage timeseries
 - CWWMG Inflow Dataset

Calibration Result Graphs



Preliminary
examples
from the
Saluda Basin

Santee River Basin

THANK YOU