

**State of South Carolina
303(d) List for 1998**

*Priority Ranked Waterbodies Targeted for
Water Quality Management Action*

EPA Approved June 1998



PROMOTE PROTECT PROSPER
South Carolina Department of Health
and Environmental Control

1. Introduction

The South Carolina Department of Health and Environmental Control (Department) developed this priority list of waterbodies pursuant to Section 303(d) of the Federal Clean Water Act (CWA) and Federal Regulation 40 CFR 130.7. The list identifies South Carolina waterbodies not meeting State water quality standards after application of required controls for point and nonpoint source pollutants and identifies priority waterbodies for which the Department directs its attention when developing required controls. The severity of the pollution and the classified uses of the waterbodies were employed to determine the ranking of the list in conjunction with the Department's five-year rotating basin Watershed Water Quality Management Strategies. The list will be used to target waterbodies for water quality protection plans and processes, including Total Maximum Daily Loads (TMDLs), for listed waterbodies.

The impacts of point sources to waterbodies have been substantially mitigated through assimilative capacity determinations which have been incorporated into National Pollutant Discharge Elimination System (NPDES) permits. Nonpoint source impacts have also been reduced exclusive of TMDL development or implementation through a combination of regulatory statutes (the SC Pollution Control Act and Sediment and Erosion Control Act), outreach and education initiatives undertaken by this Agency and other government entities, and voluntary landowner stewardship efforts (such as the National Resource Conservation Service's EQIP and Conservation Reserve Program). The continued expansion and promotion of these and other analogous programs in conjunction with TMDL development and implementation should lead to an effective combination in reducing point and nonpoint source pollution of water bodies.

In compliance with 40 CFR 25.4(c), the Department issued a public notice in regional newspapers to ensure statewide coverage of the Department's intent to update its list of impaired waterbodies and the prioritization of that list for targeting for development of Total Maximum Daily Loads (TMDLs) and a person to contact for information regarding the development of the list. Further the notice asked for comments regarding the list, list methodology, priority ranking, and TMDL target dates and allowed for a thirty day comment period in which to respond. The Department also mailed out a copy of the public notice to more than three hundred sixty interested parties which included environmental groups, industries, private individuals, local governments, universities, research groups, other State agencies, and the USEPA. The Department also posted the public notice and the draft list on its website to provide supplemental public notification and coverage.

Additional public input is solicited during public workshops conducted in locations throughout each of the five watershed basins during development of its Watershed Water Quality Management Strategies (WWQMSs). Last year, the Department has held six workshops in two of the basins and will continue to hold meetings throughout the State in accordance with this watershed approach. These meetings are held in order for the Department to ascertain if the public has knowledge of specific water quality problems or concerns that they believe the Department should investigate. Department staff solicit information regarding the State's 303(d) list of impaired waters and distribute a handout containing information about the list and

its purpose. The information that staff receive at these meetings is integral to development of water quality monitoring strategy and discovery of some sources of pollution, especially for those on the impaired waters list. These meetings are noticed publicly in area newspapers and fliers with information pertaining to the upcoming meetings mailed to interested parties in the area. More than two thousand fliers were mailed to individuals and organizations for the six meetings. The information that is gathered at these meetings is included in the WWQMSs and ultimately into the 303(d) list of impaired waters for the State.

Many waters on the 1996 303(d) list now meet water quality standards. As a result of increased monitoring and more specific Federal guidance, many waters have been added to the 1998 list.

This document is organized into three sections and an attachment. This first section is the introduction which briefly describes the purpose for developing the list, how it will be used, and public participation in its development and circulation. The second section describes the methodology and data sources used to develop the list. The third section describes the methodology used to prioritize the list and target specific waterbodies for TMDL development. The attachment is the priority ranked list.

2. Methodology for Identifying Impaired Waters

Multiple sources of information were used to compile the State's 1998 303(d) list of waterbodies. The Department reviewed readily available information and data collected by the Department as well as other sources. Data used from within the Department included the following:

- » Water chemistry data from 700 surface water and sediment monitoring sites
- » Approximately 500 shellfish growing monitoring sites
- » Fish, oyster, and crab tissue monitoring data
- » Stream macroinvertebrate assessments
- » Discharge Monitoring Report data
- » Lake eutrophication monitoring data
- » Environmental Surveillance Oversight Program (Savannah River Site)
- » Nonpoint Source (319) data from State Nonpoint Source Management Plans
- » 304(l) Short List
- » State Watershed Water Quality Management Strategies
- » State Shellfish Restoration Committee
- » Special studies or general knowledge

The Department also used additional chemical or biological data which were provided by the following:

- Carolina Power and Light
- Coastal Science Associates, Inc.

- Duke Energy
- E.T.T. Environmental, Inc.
- Environmental Resource Management
- Georgia Department of Natural Resources
- International Paper
- North Carolina Department of Environment and Natural Resources
- Savannah River Ecology Laboratory
- Shealy Environmental Services, Inc.
- South Carolina Department of Natural Resources
- South Carolina Electric and Gas Company
- South Carolina Public Service Authority (Santee Cooper)
- Swearingen Ecology Associates
- United States Army Corps of Engineers
- United States Environmental Protection Agency
- United States Geological Survey
- Westinghouse Savannah River Site

All data sources used were readily accessible and met the Department's criteria for comparable quality assurance.

The sources of information listed above were used as follows:

Water chemistry and stream macroinvertebrate data were evaluated to prepare the State's 1998 305(b) Report and the Department's Watershed Water Quality Management Strategies. Those waterbodies for which ambient water quality indicates less than full support of State designated uses were considered for inclusion on the 303(d) list. The following is description of how the Department makes its use support determinations:

Aquatic Life Use Support

One important goal of the CWA and State standards is to maintain the quality of surface waters to provide for the survival and propagation of a balanced indigenous aquatic community of fauna and flora. The degree to which aquatic life is protected (aquatic life use support) is assessed by comparing important water quality characteristics and the concentrations of potentially toxic pollutants with standards. Support of aquatic life uses is based on the percentage of standards excursions and, where data are available, the composition and functional integrity of the biological community.

For dissolved oxygen and pH, if 10 percent or less of the samples contravene the appropriate standard, then aquatic life uses are said to be fully supported. A percentage of standards excursions between 11-25 is considered partial support, and a percentage greater than 25 is considered to represent nonsupport, unless excursions are due to natural conditions.

If the acute aquatic life standard is exceeded for any individual toxicant (heavy metals, priority pollutants, chlorine, ammonia) in more than 10 percent of the samples, aquatic life uses are not supported. If the acute aquatic life standard is exceeded more than once, but in less than or equal to 10 percent of the samples, uses are partially supported.

Biological data are the ultimate deciding factor for aquatic life uses, regardless of chemical conditions. The goal of the standards is the protection of a balanced indigenous aquatic community.

Macroinvertebrate Data Interpretation

Macroinvertebrate community assessments are used, where available, to supplement or verify aquatic life use support determinations and to evaluate potential impacts from the presence of sediment contaminants. Aquatic and semi-aquatic macroinvertebrates are identified to the lowest practical taxonomic level depending on the condition and maturity of specimens collected. The EPT Index and the North Carolina Biotic Index are the main indices used in analyzing macroinvertebrate data. To a lesser extent taxa richness and sometimes total abundance may be used to help interpret data.

The EPT Index is a tabulation of taxa richness within the generally pollution sensitive groups. EPT values are compared with least impacted regional sites. The Biotic Index for a sample is the average pollution tolerance of all organisms collected, based on assigned taxonomic tolerance values.

Taxa richness is the number of distinct taxa collected and is the simplest measure of diversity. High taxa richness is generally associated with high water quality. Increasing levels of pollution progressively eliminate the more sensitive taxa, resulting in lower taxa richness. Total abundance is the enumeration of all macroinvertebrates collected at a sampling location. This is generally not regarded as a qualitative metric. However, when gross differences in abundance occur between stations, this metric may be considered as a potential indicator.

Recreational Use Support

The degree to which the swimmable goal of the CWA is attained (recreational use support) is based on the frequency of fecal coliform bacteria excursions, defined as greater than 400/100 ml for all surface water classes. If 10 percent or less of the samples are greater than 400/100 ml then recreational uses are said to be fully supported. A percentage of standards excursions between 11-25 percent is considered partial support of recreational uses, and greater than 25 percent is considered to represent nonsupport of recreational uses.

Fish Consumption Use Support

The Department uses a risk-based approach to evaluate mercury concentrations in fish tissue and to issue consumption advisories in affected waterbodies. This approach contrasts the average daily exposure dose to the reference dose (RfD). Using these relationships, fish tissue data are interpreted by determining the consumption rates that would not be likely to pose a health threat to adult males and nonpregnant adult females. Because an acceptable RfD for developmental neurotoxicity has not been developed, pregnant women, infants, and children are advised to avoid consumption of fish from any waterbody where an advisory has been issued. The Department continues to issue fish consumption advisories for polychlorinated biphenyls (PCBs) based on the USDA action level of 2.0 parts per million.

Fish tissue data were utilized by the Department for issuance of Fish Consumption Advisories. The Department reviews data for toxics including mercury and polychlorinated biphenyls

(PCBs). Issuance of a fish consumption advisory for a waterbody constitutes impairment of that waterbody and placement on the 303(d) list.

Shellfish harvesting data were evaluated to prepare the 1998 305(b) Report. Those waterbodies which are classified for shellfish harvesting but which are restricted to shellfish harvesting due to existing water quality standards violations were placed on the 303(d) list. Administrative closures are prohibited areas established adjacent to all point sources and/or marinas as a precaution to protect public health. These prohibited areas do not necessarily have lower water quality; rather they are areas which have the potential for variable water quality. These areas are not included as impaired since State water quality standards allow for these areas.

The Department also included *Lake Water Quality Assessment data* that were used to prepare the 1998 305(b) Report. The trophic condition of South Carolina lakes is monitored through the Department's network of routine sampling stations and through periodic sampling of additional lakes. A multi-parameter percentile index is used to quantify overall lake trophic condition. A high index value indicates a desirable trophic condition, while low values indicate impairment. "Category I" lakes are most eutrophic and are included on the 303(d) list. Watershed phosphorus control is needed to improve the condition of impaired lakes.

Also, in keeping with the USEPA requirements, the *State's Short List of waterbodies* which was prepared pursuant to Section 304(l) of the Federal Clean Water Act in 1989 was also reviewed. The 304(l) Short List identified waters in which the State does not expect applicable water quality standards (numeric or narrative) to be achieved after technology-based requirements have been met due entirely or substantially to point source discharges of 307(a) toxics. These waterbodies were reviewed, but not included on the 303(d) list since individual control strategies were developed for each of the waterbodies included on the 304(l) Short List in 1989. These strategies allow for the achievement of water quality standards through the reduction of the discharge of toxic pollutants from the associated point sources.

Following Federal guidelines, Department staff have evaluated waterbodies identified as impaired for appropriate inclusion on the 303(d) list. Waterbodies with standard violations attributable to natural conditions were not included on the State's 1998 303(d) list.

The Department uses a watershed approach, as encouraged in the August 8, 1997 USEPA Guidance Memorandum: New Policies for Establishing and Implementing Total Maximum Daily Loads, to perform its permitting, water quality monitoring and data analysis. This approach divides the state into five major drainage basins. Permitting, monitoring and data analysis are performed according to a schedule which cycles through all basins in five years. The Department has a fixed ambient surface water monitoring network throughout the State. These stations are sampled every year. In addition to the fixed network, each year the Department activates additional stations in each basin. In accordance with the watershed cycle, more intensive water quality analysis is performed each year for a particular basin. Finally, permits are reissued every five years basin by basin.

All waters on the State's 1996 303(d) list have been analyzed for appropriate inclusion on the

1998 303(d) List as defined in 40 CFR 130.2(j) and the August 27, 1997 USEPA Guidance Memorandum, National Clarifying Guidance for 1998 State and Territory Section 303(d) Listing Decisions. Current data have been evaluated and waterbodies removed from the list when standards are met. To assure that only impaired waters where required controls will not allow the water to meet applicable standards are listed, a systematic review of all permits, enforcement actions, and current data was undertaken for waters listed in 1996. This review highlighted many Department activities which should allow waters to meet standards. Permit limits have been tightened and enforcement actions in the form of signed Consent Orders have been taken against facilities located on 303(d) listed waters. The Department believes that it should not list these waters where required technology based permit limitations have not been fully implemented. However, at the direction of the EPA, the Department has included these waters on the State's 1998 303(d) list as a separate priority status (see Priority 3).

The cyclical nature of our permitting, intensive monitoring and data analysis result in a dynamic 303(d) list. As new waters are monitored, new impaired sites may be found which require listing. Sites where water quality improves require delisting. The Department is developing TMDLs for waters on the 303(d) list. As these TMDLs are approved by USEPA, the waters will be delisted per the National Clarifying Guidance.

As outlined in 40 CFR 107(b)(6)(iv) and the National Clarifying Guidance, the Department prepared a list of good causes justifying the differences between the State's 1996 and 1998 303(d) lists. This list is the 1996-1998 Reconciliation Worksheet and accounts for each waterbody that was included on the 1996 303(d) list and is not included on the 1998 303(d) list and it is available for review as a separate document. Briefly, the Department attributes good cause for removal of waterbodies from the State's 303(d) list to the following: 1) stations located outside of the boundaries of the State, 2) trends for parameters for which no indication of water quality standard violations in the next two years, 3) exhaustive review of data indicated no violation of applicable water quality standards, 4) a change in analytical methodology of the data as prescribed by Federal guidance, 5) removal of source of contamination, 6) most recent data indicates uses are fully supported, and 7) a management strategy has been developed. Some waters listed on the State's 1996 303(d) list which may not appear to be on the State's 1998 303(d) list, but in reality are included, may be due to the streams being renamed or the stations are now considered in another watershed.

3. Methodology for Priority Ranking and Targeting Impaired Waterbodies

The Department utilized a decision tree approach for developing a systematic method for prioritizing the waterbodies on the State's 303(d) list. This approach is based primarily on objective evaluation of information by the watershed managers and other staff within the Department. This process ranks waterbodies based on the severity of the water quality impairment and the impaired use of the waterbody resulting in the waterbodies being placed into three priority categories.

Priority 1 waterbodies include those categorized by one or more of the following criteria: identified as having water quality standards violations for multiple causes which resulted in a nonsupport of use(s) by water chemistry and stream macroinvertebrate data; an advisory

resulted in a complete ban (affecting the entire population) on fish consumption as identified by fish tissue data; and shellfish harvesting waterbodies where shellfish harvesting was restricted, but not prohibited, and also identified as of highest concern by the State Shellfish Restoration Committee.

Priority 2 waterbodies include those categorized by one or more of the following criteria: identified as having water quality standards violations for a single cause which resulted in a nonsupport or partial support of use(s) by water chemistry and stream macroinvertebrate data; an advisory resulted in a partial ban (affecting a limited portion of the population) on fish consumption as identified by fish tissue data; and waterbodies where the shellfish harvesting was restricted, but not prohibited.

Priority 3 waterbodies include those where required technology based permit limitations have not been fully implemented. (i.e. more stringent permit limitations enacted and/or enforcement actions resulting in compliance with permit limitations.)

The 303(d) list of waterbodies serves to identify those waterbodies which need additional management actions. For those waterbodies identified, targeting for TMDL development of the priority ranked waterbodies is necessary so that limited technical and monetary resources can be focused on developing a comprehensive approach to the remediation of impaired waterbodies. The Department evaluated several factors in its targeting considerations which include, but are not limited to, the following:

- ▲ Basin planning cycles
- ▲ Adequacy of existing and readily available data
- ▲ Immediate programmatic needs such as the need to develop wasteload allocations for permits, or a load allocation for nonpoint source controls
- ▲ Degree of public interest and support and the cooperation of the affected public
- ▲ Recreational, economic, and aesthetic importance
- ▲ Court orders and decisions relating to water quality
- ▲ National priorities and policies
- ▲ Adequacy of existing technical tools
- ▲ Ongoing activities in the watershed
- ▲ Other Department needs and activities

The evaluation of the above listed targeting considerations resulted in the following schedule for TMDL development. We expect to complete many of these TMDLs well before the milestone dates indicated.

- A. By the end of Federal Fiscal Year 2003, South Carolina will complete TMDLs for waters requiring QUAL2E models for dissolved oxygen. This schedule allows application of the QUAL2E model for dissolved oxygen to each basin during our five year basin planning cycle and issuance of permits for these waters. The TMDL will be developed during the modeling year; however, to save resources the TMDL may be put on public notice with the permit during the permitting year. QUAL2E models will be completed for the Saluda and Edisto basins in 1998, the Catawba and Santee basins in 1999, the Pee Dee basin in 2000, the Broad basin in

2001, and the Savannah and Salkehatchie basins in 2002. Permits will be issued in the Saluda and Edisto basins in 1999, the Catawba and Santee basins in 2000, the Pee Dee basin in 2001, the Broad basin in 2002, and the Savannah and Salkehatchie basins in 2003.

- B. By the end of Federal Fiscal Year 2007, South Carolina will complete TMDLs for waters impacted by fecal coliform, all remaining waters impacted by low dissolved oxygen, and waters impacted by point source toxics. TMDLs will be developed for waters where nonpoint sources are causing fecal coliform and dissolved oxygen impairments. Watershed land use analysis, special water quality studies, partnerships among landowners and other interested parties, and watershed modeling will be considered. Several waterbodies on the 303(d) list with dissolved oxygen concerns may require complex dynamic models; several of these models are in progress. Point source toxics concerns will be addressed through revised permit limits. Permits will be issued in the Savannah and Salkehatchie basins in 2003, the Saluda and Edisto basins in 2004, the Catawba and Santee basins in 2005, the Pee Dee basin in 2006, and the Broad basin in 2007.
- C. By the end of Federal Fiscal Year 2010, South Carolina will complete TMDLs for waters impacted by nutrients, pH, toxics from nonpoint sources, and all remaining pollutants. The method for developing these TMDLs may be similar to the process described in part B for nonpoint sources, or may require placing additional limits on point sources.

Waterbodies are listed by point locations; however, the impairment extends for some distance upstream and/or downstream of the point location listed. The Department will determine the extent of the impairment of the waters during TMDL development.

The priority ranked waterbodies are listed in Attachment 1. Waterbodies targeted for TMDL development within the next reporting period (2 years) are italicized, bold, and are marked by an asterisk and are noted on the pages of the list.

The column headings included on the State's 1998 303(d) list refer to the following:

Site - This column is a brief description of the location of the impaired waterbodies.

Station Number - This column refers to the Department's station code where data was collected for the cause of impairment for the waterbody.

SF Area - This column refers to the shellfish harvesting area where data was collected for the cause of impairment for the waterbody.

Impaired Use - This column refers to the use support impairment for aquatic life and/or recreational uses. Shellfish harvesting and fish consumption are subsets of recreational use support. The impaired uses are denoted as follows:

Recreational Use (Swimming): REC
 Recreational Use (Fish Consumption): REC/FSH CON
 Recreational Use (Shellfish Harvesting): REC/SFH
 Aquatic Life Use: AL

Cause - This column refers to the problem parameter(s) that resulted in nonsupport or partial support of the uses listed. The parameters are denoted as follows:

Cesium: CS	Hydrogen Ion Concentration: PH
Chromium: CR	Macroinvertebrate: BIO
Contaminated Crab & Shrimp Tissue: TIS	Mercury: HG
Contaminated Sediments: SED	Pesticides: PEST
Copper: CU	Phosphorus: P
Dissolved Oxygen: DO	Strontium: SR
Fecal Coliform Bacteria: FC	Zinc: ZN

Hydrologic Unit - The number in this column refers to a standardized subbasin unit in which the waterbody is located.

Acres - The number in this column refers to the acreage of impaired shellfish harvesting waters associated with the site.

Basin - This column refers to one of five basins that are contained in the State.

Attachment 1

The State of South Carolina's 1998 303(d) List of Impaired Waters

The following list contains the State of South Carolina's 1998 List of Priority Ranked Waterbodies Targeted for Water Quality Management Action in Accordance with Section 303(d) of the Federal Clean Water Act.

**Priority One
Aquatic Life and Recreation Uses
Listed Alphabetically**

June 1998

SITE	STATION NUMBER	IMPAIRED USE	CAUSE	HYDROLOGIC UNIT	BASIN
* ASHLEY RVR, BTWN LEEDS AVE & MOUTH OF CHURCH CK	MD-242	REC,AL	FC, DO	03050202040	SANTEE
BEARDS FORK CK AT US 276 (I-385) 3.7 MI NNE OF CLINTON	B-231	REC, AL	FC,DO	03050108040	BROAD
BEAUFORT RVR BL BEAUFORT AT CHANNEL MARKER 244	MD-003	AL	DO,CU	03050208100	SALKEHATCHIE
BEAVERDAM CREEK AT S-37-66	SV-345	REC, AL	BIO, FC	03060102150	SAVANNAH
BEEES CK AT SC 462 5.9 MI NE OF RIDGELAND	MD-128	REC, AL	DO, FC	03050208090	SALKEHATCHIE
BOYD MILL POND	S-311	AL	P,PH	03050109120	SALUDA
BROAD RVR AT SC 211 12 MI SE OF GAFFNEY	B-044	AL	CU,ZN,CR	03050105094	BROAD
BROADWAY CK AT US 76 BTWN ANDERSON & BELTON	SV-141	REC, AL	BIO, FC	03060103070	SAVANNAH
COOSAWHATCHIE RIVER AT SC 363	CSTL-121	REC, AL	DO, FC	03050208050	SALKEHATCHIE
CRABTREE CK AT LONG ST	MD-158	REC,AL	FC,DO	03040206120	PEE DEE
CRANE CK AT S-40-43 UNDER I-20 - N COLA	B-316	AL	CU,ZN	03050106060	BROAD
* DORCHESTER CK AT SC 165	CSTL-013	REC,AL	FC, DO	03050202030	SANTEE
DRY FORK AT S-12-304 2 MI SW OF CHESTER	B-074	REC,AL	FC, SED	03050106040	BROAD
* DUCK POND CK AT SC 6	SC-034	REC, AL	FC, DO ,PH	03050201010	SANTEE
ENOREE RVR AT UNNUM RD W US 25 N TRAVELERS REST	BE-001	REC, AL	ZN,FC	03050108010	BROAD
FAIRFOREST CK AT SC 56	B-021	AL	ZN,BIO	03050107060	BROAD
GOOSE CK AT US 52 N CHTN	MD-114	REC,AL	FC,DO,PH	03050201070	SANTEE
* GRASSY RUN BR AT SC 72 1.6 MI NE CHESTER	CW-088	REC,AL	FC,DO	03050103090	CATAWBA
HAILE GOLD MINE CREEK AT S-29-188	PD-334	AL	PH,BIO,CU,ZN	03040202070	PEE DEE
HARD LABOR CREEK AT S-24-164 BRIDGE	SV-151	AL	BIO, CU	03060107010	SAVANNAH
HORSE CK BELOW LANGLEY POND AT S-02-254	SV-096	REC, AL	CU, FC	03060106050	SAVANNAH
INTRACOASTAL WTRWAY 1 MI S OF BRDG ON US 501	MD-088	REC,AL	FC,DO,PH	03040206140	PEE DEE
INTRACOASTAL WTRWAY AT PT 3 MI N OF BRDG ON US 501	MD-085	REC,AL	FC,DO,PH	03040206140	PEE DEE
INTRACOASTAL WTRWAY AT SC 544 7.5 MI SW OF MYRTLE BEACH	MD-127	AL	DO,PH	03040206140	PEE DEE
INTRACOASTAL WTRWAY JUST N OF BRDG ON US 501	MD-087	REC,AL	FC,DO,PH,ZN	03040206140	PEE DEE
INTRACOASTAL WTRWY (LITTLE RVR) ON SC 9 (US 17)	MD-125	REC,AL	FC,DO	03040207030	PEE DEE
INTRACOASTAL WTRWY 2 MI S OF BRDG ON US 501	MD-089	REC,AL	FC,DO,PH	03040206140	PEE DEE
INTRACOASTAL WTRWY 4 MI N OF BRDG ON US 501	MD-091	REC,AL	FC,DO	03040207030	PEE DEE
JACKSON CK AT S-20-54, 5 MI W OF WINNSBORO	B-102	AL	CR,CU,BIO	03050106080	BROAD
* LAWSONS FORK CK AT S-42-108	BL-001	REC, AL	FC ,BIO	03050105180	BROAD
* LAWSONS FORK CK AT S-42-40	B-221	REC, AL	FC ,BIO	03050105180	BROAD
LITTLE PEE DEE AT S-34-60	PD-052	AL	ZN,CU	03040204030	PEE DEE
LITTLE PEE DEE RVR @S-34-60	PD-052	AL	CU,ZN	03040204060	PEE DEE
LITTLE RVR AT S END OF ISL DUE E OF TOWN (IN RVR)	MD-162	REC,AL	FC,PH	03040207030	PEE DEE
* LK EDGAR BROWN IN FOREBAY NEAR DAM	CL-064	AL	PH, P	03050207020	SALKEHATCHIE
LK GREENWOOD, REEDY RVR ARM	S-308	AL	P,PH	03050109120	SALUDA
LK JOCASSEE AT TOXAWAY, HORSE PASTURE, & LAUREL FK CONFLUENCE	SV-335	AL	CU, ZN	03060101020	SAVANNAH
LK MURRAY, BUSH RVR ARM	S-309	AL	P,PH	03050109150	SALUDA
LK OLIPHANT	CL-021	AL	P,PH	03050103060	CATAWBA
LK WATEREE AT END OF S-20-291	CW-207	AL	CU,SED,P	03050104010	CATAWBA

* Indicates TMDLs will be developed within 2 years.

**Priority One
Aquatic Life and Recreation Uses
Listed Alphabetically**

June 1998

SITE	STATION NUMBER	IMPAIRED USE	CAUSE	HYDROLOGIC UNIT	BASIN
LK WATEREE AT S-20-101 11 MI ENE WINNSBORO	CW-208	AL	CU,P	03050104010	CATAWBA
* <i>MILL CK AT BENT BRIDGE RD</i>	S-315	REC, AL	FC,ZN	03050109040	SALUDA
N TYGER RVR AT US 29 7.2 MI W OF SPARTANBURG	B-219	REC, AL	FC,ZN	03050107020	BROAD
NASTY BR AT S-43-251 7.5 MI SW OF SUMTER	PD-239	AL	DO,PH	03040205080	PEE DEE
PEE DEE RVR AT U.S. 301/76	PD-337	AL	CR,CU	03040201120	PEE DEE
PRINCESS CREEK AT SUBER MILL RD, OFF S-23-540	B-192	REC, AL	FC,ZN,PH	03050108010	BROAD
REEDY FORK OF LK GREENWOOD	S-022	AL	P,PH	03050109080	SALUDA
REEDY RVR AT S-23-448 1.75 MI SE CONESTEE	S-018	REC, AL	FC,CR	03050109100	SALUDA
ROCKY RVR AT S-04-263 2.7 MI SE ANDERSON AT STP	SV-031	REC, AL	CU, FC	03060103070	SAVANNAH
* <i>RUM CK AT S-29-187</i>	CW-232	REC,AL	FC,CR,DO	03050103042	CATAWBA
SAWMILL BR AT SC 78 E OF SUMMERVILLE	CSTL-043	REC,AL	FC,DO	03050202030	SANTEE
SHIPYARD CK BETWEEN MARKER #6 AND MCALLOY DOCK	MD-243	AL	SED,TIS	03050201050	SANTEE
SMITH BR AT N MAIN ST (US 21) IN COLA	B-280	REC, AL	FC,BIO	03050106060	BROAD
SMITH SWP AT US 501 1.9 MI SSE OF MARION	PD-187	AL	CU,DO	03040201150	PEE DEE
SNAKE BR AT RR AVE IN HARTSVILLE	PD-258	REC,AL	FC,DO,PH	03040201110	PEE DEE
SNAKE BR AT WOODMILL ST-HARTSVILLE	PD-137	REC,AL	FC,PH	03040201110	PEE DEE
TILE DISCHARGING TO DITCH ACROSS RD AT DARLINGTON STP	PD-141	REC, AL	DO,FC	03040201110	PEE DEE
TRIB TO FAIRFOREST CK 200 FT BL S-42-65	B-321	REC, AL	FC,CR,CU,ZN	03050107060	BROAD
WILLOW CREEK AT S-21-57	PD-167	AL	DO,PH	03040201130	PEE DEE

* Indicates TMDLs will be developed within 2 years.

**Priority One
Fish Consumption Use
Listed Alphabetically**

June 1998

SITE	IMPAIRED USE	CAUSE	HYDROLOGIC UNIT	BASIN
LK HARTWELL, SENECA RIVER ARM N OF SC HIGHWAY 24 AND TWELVE MILE CRK	REC/FSH CON	PCBS	03060101	SAVANNAH
LK HARTWELL SOUTH OF SC HIGHWAY 24	REC/FSH CON	PCBS	03060101	SAVANNAH
ALL OF LK HARTWELL IN THIS UNIT	REC/FSH CON	PCBS	03060102	SAVANNAH
LANGLEY POND	REC/FSH CON	PCBS, HG	03060106	SAVANNAH

**Priority One
Shellfish Harvesting Use
Listed by Shellfish Growing Area**

June 1998

SITE	MANAGEMENT AREA	IMPAIRED USE	CAUSE	HYDROLOGIC UNIT	ACRES	BASIN
Little River southeast of Tilghman's Point. All portions of Dunn Sound & Hog Inlet	01	REC/SFH	FC	03040207020120	448.32	PEE DEE
Little River southeast of Tilghman's Point. All portions of Dunn Sound & Hog Inlet	01	REC/SFH	FC	03040207020160	1652.07	PEE DEE
Litchfield - NE of Litchfield causeway	04	REC/SFH	FC	03040207040010	105.32	PEE DEE
Litchfield/Pawleys - Litchfield causeway to 100 meters NE of south Pawleys causeway	04	REC/SFH	FC	03040207040010	667.75	PEE DEE
Pawleys - area within 100 meters NE of south Pawleys causeway	04	REC/SFH	FC	03040207040010	27.86	PEE DEE
Pawleys - from 100 meters SW of south Pawleys causeway to Pawleys Inlet	04	REC/SFH	FC	03040207040010	404.53	PEE DEE
Pawleys - area within 100 meters SW of south Pawleys causeway	04	REC/SFH	FC	03040207040010	27.89	PEE DEE
Pawleys - from 100 meters SW of south Pawleys causeway to Pawleys Inlet	04	REC/SFH	FC	03040207040020	0.58	PEE DEE
Pawleys - from 100 meters SW of south Pawleys causeway to Pawleys Inlet	04	REC/SFH	FC	03040207040020	15.53	PEE DEE
Headwaters of Inlet Crk	09A	REC/SFH	FC	03050202060040	116.43	SANTEE
Headwaters of Lighthouse, Schooner, & Folly Crks at Clark Sound	10A	REC/SFH	FC	03050202070030	775.95	SANTEE
Headwaters of Lighthouse, Schooner, & Folly Crks at Clark Sound	10A	REC/SFH	FC	03050202070030	3.55	SANTEE
Headwaters of Lighthouse, Schooner, & Folly Crks at Clark Sound	10A	REC/SFH	FC	03050202070030	0.66	SANTEE
Headwaters of Lighthouse, Schooner, & Folly Crks at Clark Sound	10A	REC/SFH	FC	03050202070030	3.47	SANTEE
Headwaters of Lighthouse, Schooner, & Folly Crks at Clark Sound	10A	REC/SFH	FC	03050202070030	1.00	SANTEE
Big Bay Creek from Sta 13-01 to Sta 13-10	13	REC/SFH	FC	03050205060070	995.32	EDISTO
Chechessee Creek, between the Okatie River & Sta 18-14	18	REC/SFH	FC	03050208090090	426.18	SALKEHATCHIE
Chechessee Creek, between the Okatie River & Sta 18-14	18	REC/SFH	FC	03050208090100	362.08	SALKEHATCHIE
Okatie River, headwaters to a point approximately midway between Sta 18-08 and Sta 18-07	18	REC/SFH	FC	03050208090100	494.42	SALKEHATCHIE
Okatie River, headwaters to a point approximately midway between Sta 18-08 and Sta 18-07	18	REC/SFH	FC	03050208090100	35.82	SALKEHATCHIE
New River btw Sta 19-02A & Sta 19-21; Cooper River btw Sta 19-02A & Sta 19-02	19	REC/SFH	FC	03050208110050	2141.43	SALKEHATCHIE
Portions of the Wright River and New River btw Sta 19-06 & Sta 19-02A at Cooper River	19	REC/SFH	FC	03050208110050	2.40	SALKEHATCHIE
Portions of the Wright River and New River btw Sta 19-06 & Sta 19-02A at Cooper River	19	REC/SFH	FC	03050208130030	923.48	SALKEHATCHIE
New River btw Sta 19-02A & Sta 19-21; Cooper River btw Sta 19-02A & Sta 19-02	19	REC/SFH	FC	03050208130030	169.76	SALKEHATCHIE
Portions of the Wright River and New River btw Sta 19-06 & Sta 19-02A at Cooper River	19	REC/SFH	FC	03050208130030	0.44	SALKEHATCHIE
Portions of the Wright River and New River btw Sta 19-06 & Sta 19-02A at Cooper River	19	REC/SFH	FC	03050208140010	1832.19	SALKEHATCHIE
Portions of the Wright River and New River btw Sta 19-06 & Sta 19-02A at Cooper River	19	REC/SFH	FC	03050208140010	178.08	SALKEHATCHIE
Broad Creek - Sta 20-17B to headwaters	20	REC/SFH	FC	03050208110040	563.13	SALKEHATCHIE
Broad Creek - Sta 20-17B to headwaters	20	REC/SFH	FC	03050208110040	501.90	SALKEHATCHIE
Broad Creek - Sta 20-17B to headwaters	20	REC/SFH	FC	03050208110040	71.29	SALKEHATCHIE

**Priority Two
Aquatic Life and Recreation Uses
Listed Alphabetically**

June 1998

SITE	STATION NUMBER	IMPAIRED USE	CAUSE	HYDROLOGIC UNIT	BASIN
ALLISON CK AT US 321 3.1 MI S OF CLOVER	CW-171	REC	FC	03050101200	CATAWBA
* ASHLEY RVR AT MAGNOLIA GARDENS	MD-049	AL	DO	03050202040	SANTEE
ASHLEY RVR AT SALRR BRDG	MD-052	REC	FC	03050202040	SANTEE
* ASHLEY RVR AT SC 7 (N BRDG)	MD-135	AL	DO	03050202040	SANTEE
AWENDAW CREEK AT US 17	MD-250	REC	FC	03050202060	SANTEE
BEAR CK AT S-29-292 1.6 MI W OF LANCASTER	CW-131	REC	FC	03050103042	CATAWBA
BEAR CK AT S-29-362 3.5 MI SE OF LANCASTER	CW-151	REC	FC	03050103042	CATAWBA
BEAR CK AT S-40-82	CW-229	REC	FC	03050104060	CATAWBA
BEAR SWAMP AT S-26-110	PD-638	AL	BIO	03040206140	PEE DEE
BEAUFORT RVR AB BEAUFORT AT CHANNEL MARKER 231	MD-001	AL	DO	03050208100	SALKEHATCHIE
BEAUFORT RVR AT DRAWBRDG ON US 21	MD-002	AL	DO	03050208100	SALKEHATCHIE
BEAUFORT RVR AT JCT WITH BATTERY CK NR MARKER 42	MD-004	AL	DO	03050208100	SALKEHATCHIE
BEAVER DAM CK AT S-31-313	PD-636	AL	BIO	03040205030	PEE DEE
BEAVERDAM CK AT RD 1967	BE-039	REC	FC	03050108010	BROAD
BEAVERDAM CK AT S-30-97, 7 MI NE OF GRAY COURT	B-246	REC	FC	03050108030	BROAD
BEAVERDAM CREEK AT FOREST SERVICE ROAD 621 OFF S-19-68	SV-353	REC	FC	03060107030	SAVANNAH
BIG BRANCH AT S-14-41	CW-243	REC	FC	03050111030	CATAWBA
BIG CEDAR CK AT SC 215	B-320	REC	FC	03050106090	BROAD
BIG EASTATOE CREEK AT S-39-143	SV-230	AL	ZN	03060101030	SAVANNAH
BIG GENEROSTEE CK AT SC 187	SV-101	AL	BIO	03060103030	SAVANNAH
BIG POPLAR CK AT S-38-105	SC-011	AL	DO	03050111010	SANTEE
BIG SWP AT S-21-360 1.1 MI W OF PAMPLICO	PD-168	REC	FC	03040202130	PEE DEE
BIG WATEREE CK AT US 21	CW-072	REC	FC	03050104020	CATAWBA
BLACK CK AT HWY 15 BYPASS	PD-330	REC	FC	03040201110	PEE DEE
BLACK CK AT S-16-18 1 MI NNE HARTSVILLE	PD-021	REC	FC	03040201110	PEE DEE
BLACK RVR AT US 76 1.5 MI NE OF MAYESVILLE	PD-186	REC	FC	03040205010	PEE DEE
BLUE HILL CK ON S MAIN ST ABBEVILLE	SV-053B	REC	FC	03060103150	SAVANNAH
BOHICKET CK MOUTH @ N EDISTO RVR	MD-210	AL	DO	03050205070	EDISTO
BRIAR BRANCH AT S-43-459	PD-617	AL	BIO	03040205090	PEE DEE
BROAD CK OPPOSITE END OF S-07-80	MD-174	AL	DO	03050208110	SALKEHATCHIE
BROAD MOUTH CK AT S-04-267	S-289	REC	FC	03050109090	SALUDA
BROAD RIVER DIVERSION CANAL AT COLA WATER PLANT	B-080	AL	CU	03050106060	BROAD
BROAD RVR AT SC 18 4 MI NE GAFFNEY	B-042	REC	FC	03050105094	BROAD
BROAD RVR AT SC 213 2.5 MI SW OF JENKINSVILLE	B-236	AL	PEST	03050106060	BROAD
BROWN CK AT UNIMP RD 1.2 MI N OF CLOVER	CW-105	REC	FC	03050101190	CATAWBA
BRUSHY CK AT HOWELL RD (UN#) APPROX 5 MI NE OF GREENVILLE	BE-035	REC	FC	03050108010	BROAD
BRUSHY CK AT S-23-164	BE-009	REC	FC	03050108010	BROAD
BRUSHY CK ON GREEN ST EXT ON SC 20	S-067	REC	FC	03050109100	SALUDA
BUCK SWP AT S-17-33	PD-031	AL	DO	03040204050	PEE DEE

* Indicates TMDLs will be developed within 2 years

**Priority Two
Aquatic Life and Recreation Uses
Listed Alphabetically**

June 1998

SITE	STATION NUMBER	IMPAIRED USE	CAUSE	HYDROLOGIC UNIT	BASIN
BUCKHEAD CREEK AT SC 212	CSTL-119	REC	FC	03050207090	SALKEHATCHIE
BUFFALO CK AT SC 5 1 MI W OF BLACKSBURG	B-057	AL	CU	03050105109	BROAD
BUFFALO CREEK AT S-11-213, 2.2 MI NNW OF BLACKSBURG	B-119	REC	FC	03050105109	BROAD
BULL SWP CK AT CLVT ON UNIMP RD 1.1 MI NW OF SWANSEA	E-034	REC	FC	03050203050	EDISTO
BULLOCK CK AT SC 97 4.8 MI S OF HICKORY GROVE	B-159	REC	FC	03050105142	BROAD
* BUSH RIVER AT S.C. ROUTE 34	S-046	REC	FC	03050109150	SALUDA
BUSH RIVER AT SC 560 S OF JOANNA	S-042	REC	FC	03050109150	SALUDA
CAMP CK AT SC 97	CW-235	REC	FC	03050103080	CATAWBA
CAMPING CK S-36-202	S-290	REC	FC	03050109190	SALUDA
CANE CK AT SC 200 5 MI NNE OF LANCASTER	CW-185	REC	FC	03050103042	CATAWBA
CANE CREEK AT S-37-133	SV-342	REC	FC	03060101050	SAVANNAH
CATAWBA RVR AT UNIMP RD AB JCT WITH ROCKY CK	CW-174	AL	DO	03050103010	CATAWBA
CATTLE CK AT S-18-19	E-108	REC	FC	03050205020	EDISTO
CAW CAW SWAMP AT S-38-1032	E-105	REC	FC	03050203070	EDISTO
CEDAR CK RESERVOIR	CW-033	AL	P	03050103010	CATAWBA
CHEROKEE CK AT S-04-318 4 MI S OF BELTON	SV-043	REC	FC	03060103070	SAVANNAH
CHESSEY CREEK AT S-15-45	CSTL-580	AL	BIO	03050208030	SALKEHATCHIE
CHOESTOEIA CREEK AT S-37-49	SV-108	REC	FC	03060102130	SAVANNAH
CLARK FORK INTO CRAWFORD LK ON UN# RD NEAR SC 161 & 705-KINGS MT	B-325	REC	FC	03050105142	BROAD
COMBAHEE RVR BL YEMASSEE OUTFALL	CSTL-111	AL	DO	03050208010	SALKEHATCHIE
CONEROSS CK AT S-37-13	SV-333	REC	FC	03060101080	SAVANNAH
CONEROSS CK AT S-37-54 (LAKE HARTWELL)	SV-322	REC	FC	03060101080	SAVANNAH
CONEROSS CK AT SC 59	SV-004	REC	FC	03060101080	SAVANNAH
CONGAREE CK AT US 21 AT CAYCE WATER INTAKE	C-008	REC	FC	03050110020	SALUDA
CONGAREE RVR AT BLOSSOM ST (BROAD RIVER)	CSB-001R	REC	FC	03050110010	SALUDA
COOSAW RVR AT CONFL OF COMBAHEE RVR, NEAR BUOY 186	MD-168	AL	ZN	03050208100	SALKEHATCHIE
COOSAWHATCHIE RVR AT S-03-47	CSTL-110	AL	DO	03050208050	SALKEHATCHIE
CORONACA CK AT S-24-100	S-092	AL	DO	03050109140	SALUDA
COUSAR BR 1/4 MI BELOW BISHOPVILLE FINISHING CO	PD-112	REC	FC	03040202090	PEE DEE
CRANE CREEK AT US 321	B-081	AL	BIO	03050106060	BROAD
CROWDERS CK AT S-46-564 NE CLOVER	CW-023	REC	FC	03050101190	CATAWBA
CROWDERS CREEK AT S-46-1104	CW-024	REC	FC	03050101190	CATAWBA
CUFFYTOWN CREEK AT S-33-138	SV-351	REC	FC	03060107010	SAVANNAH
CYPRESS BRANCH AT S-21-164	PD-631	AL	BIO	03040202130	PEE DEE
CYPRESS CREEK AT S-27-108	CSTL-122	REC	FC	03050208080	SALKEHATCHIE
CYPRESS CREEK AT S-27-119	SV-356	AL	DO	03060109050	SAVANNAH
CYPRESS SWAMP AT US 78	CSTL-078	AL	ZN	03050202010	SANTEE
DEAN SWAMP AT US 176	E-030	REC	FC	03050206060	EDISTO
DIVERSION CANAL AT SC 45 12.6 MI W OF ST STEPHENS	CSTL-079	AL	CU	03050111010	SANTEE

* Indicates TMDLs will be developed within 2 years

**Priority Two
Aquatic Life and Recreation Uses
Listed Alphabetically**

June 1998

SITE	STATION NUMBER	IMPAIRED USE	CAUSE	HYDROLOGIC UNIT	BASIN
DOOLITTLE CK AT S-11-100 1.25 MI SE OF BLACKSBURG	B-323	REC	FC	03050105094	BROAD
DOUBLE BRANCH AT S-01-33	SV-054	AL	BIO	03060103150	SAVANNAH
DURBIN CK ON S-23-160 3 MI E OF SIMPSONVILLE	B-035	REC	FC	03050108010	BROAD
EAGLE CK AT SC 642 5 MI SSE OF SUMMERVILLE	CSTL-099	REC	FC	03050202030	SANTEE
EDISTO RVR AT US 15 S OF ST GEORGE	E-014	REC	FC	03050205030	EDISTO
EIGHTEEN MI CK AT UNNUMBERED CO RD 2.25 MI SSW OF EASLEY	SV-017	REC	FC	03060101090	SAVANNAH
ENOREE RVR AT S-42-118 SW OF WOODRUFF	B-037	REC	FC	03050108010	BROAD
ENOREE RVR AT SC 296, 7.5 MI NE OF MAULDIN	BE-017	AL	CU	03050108010	BROAD
ENOREE RVR AT SC 418	BE-019	AL	BIO	03050108010	BROAD
ENOREE RVR AT SC 72, 121, & US 176, 1 MI NE WHITMIRE	B-053	REC	FC	03050108020	BROAD
ENOREE RVR AT US 221	BE-024	REC	FC	03050108020	BROAD
FAIRFOREST CK AT US 221 S OF SPARTANBURG	B-020	REC	FC	03050107060	BROAD
FILBIN CREEK AT VIRGINIA AVE, NORTH CHARLESTON	MD-249	REC	FC	03050201050	SANTEE
FISHING CK AT S-46-347	CW-005	REC	FC	03050103050	CATAWBA
FISHING CK AT SC 49 NE YORK	CW-029	REC	FC	03050103050	CATAWBA
FISHING CK RESERVOIR	CW-057	AL	P	03050103010	CATAWBA
FISHING CREEK AT S-12-77	CW-233	REC	FC	03050103060	CATAWBA
FISHING CREEK AT S-46-163	CW-224	REC	FC	03050103060	CATAWBA
FISHING CREEK AT S-46-503	CW-225	REC	FC	03050103050	CATAWBA
FLAT CREEK AT S-29-123	PD-342	REC	FC	03040202040	PEE DEE
FORK CK AT S-13-770, 1.5 MI SW JEFFERSON	PD-068	AL	BIO	03040202050	PEE DEE
FORK CK AT SC 151	PD-067	REC	FC	03040202050	PEE DEE
FOSTER CREEK AT CHARLESTON CPW WATER INTAKE	MD-240	REC	FC	03050201060	SANTEE
FOUR HOLE SWP AT S-38-50 5.2 MI SE OF CAMERON	E-059	REC	FC	03050206010	EDISTO
FULLER SWAMP CREEK AT US 17A	CSTL-581	AL	BIO	03050208030	SALKEHATCHIE
FURNACE CK AT S-11-50 6 MI E OF GAFFNEY	B-100	REC	FC	03050105094	BROAD
GILDER CK AT S-23-142 2.75 MI ENE OF MAULDIN	B-241	REC	FC	03050108010	BROAD
GILDER CK AT S-23-143 1/4 MI AB JCT WITH ENOREE RVR	BE-020	REC	FC	03050108010	BROAD
GILDER CK AT SC 14-AB GILDERS CK PT	BE-040	REC	FC	03050108010	BROAD
GILKEY CK AT S-11-231, 9 MI SE OF GAFFNEY	B-334	REC	FC	03050105130	BROAD
GILLS CK AT BRDG ON US 76 (GARNERS FERRY ROAD)	C-001	REC	FC	03050110030	SALUDA
GILLS CK AT SC 48 (BLUFF ROAD)	C-017	REC	FC	03050110030	SALUDA
GILLS CK AT US 521 NNW OF LANCASTER	CW-047	REC	FC	03050103042	CATAWBA
GOLDEN CK AT GOLDEN CK RD	SV-738	AL	BIO	03060101070	SAVANNAH
GOOSE CK AT S-08-136 BRIDGE	MD-039	REC	FC	03050201070	SANTEE
* <i>GOOSE CK RESERVOIR 100 M US OF DAM</i>	ST-032	AL	<i>DO</i>	03050201070	SANTEE
* <i>GOOSE CK RESERVOIR AT 2ND POWERLINES US OF BOAT RAMP</i>	ST-033	AL	<i>DO</i>	03050201070	SANTEE
* <i>GOOSE CK RESERVOIR AT CHTN WTR INTAKE</i>	MD-113	AL	<i>DO</i>	03050201070	SANTEE
GREAT SWAMP AT U.S. 17	MD-129	REC	FC	03050208120	SALKEHATCHIE

* Indicates TMDLs will be developed within 2 years

**Priority Two
Aquatic Life and Recreation Uses
Listed Alphabetically**

June 1998

SITE	STATION NUMBER	IMPAIRED USE	CAUSE	HYDROLOGIC UNIT	BASIN
GULLEY BR AT S-21-13, TIMROD PARK	PD-065	REC	FC	03040201130	PEE DEE
GUYONMOORE CREEK AT S-46-233	B-330	REC	FC	03050105094	BROAD
HALFWAY SWAMP CK AT SC 33	SC-007	REC	FC	03050111020	SANTEE
HALFWAY SWP CK AT S-09-43 3 MI E OF ST MATTHEWS	C-063	REC	FC	03050111020	SANTEE
* HANGING ROCK CK TRIB AT S-29-13	PD-329	REC	FC	03040202070	PEE DEE
HOLLOW CK AT S-32-54	S-306	REC	FC	03050109200	SALUDA
HORSE CK AT ASCAUGA LAKE RD (S-02-33) IN GRANITEVILLE	SV-329	AL	CU	03060106050	SAVANNAH
HORSE CK AT S-02-145	SV-072	REC	FC	03060106050	SAVANNAH
HORSE RANGE SWAMP AT US 176	E-052	REC	FC	03050206055	EDISTO
HORSESHOE CK AT SC 64	CSTL-071	REC	FC	03050208030	SALKEHATCHIE
IRELAND CK AT S-15-116 5 1/2 MI N OF WALTERBORO	CSTL-044	REC	FC	03050208020	SALKEHATCHIE
IRENE CK AT S-11-307 2.5 MI W OF GAFFNEY	B-059	REC	FC	03050105130	BROAD
JACKS CK AT S-14-76	CW-244	REC	FC	03050111030	CATAWBA
JEFFERIES CK AT S-16-13	PD-639	AL	BIO	03040201130	PEE DEE
JEREMY CK NEAR BOAT LANDING AT MCCLELLANVILLE TOWN HL	MD-203	REC	FC	03050202060	SANTEE
JIMMIES CK AT S-42-201 2 MI E OF WOODRUFF	B-019	REC	FC	03050107050	BROAD
JOHNS CREEK AT S-01-159	SV-734	AL	BIO	03060103150	SAVANNAH
KELSEY CK AT S-42-321	B-235	REC	FC	03050107060	BROAD
KINGS CREEK AT S-11-209, 3 MI W OF SMYRNA	B-333	REC	FC	03050105122	BROAD
KINGSTON LK NR PUMP STA ON LAKESIDE DR CONWAY	MD-107	AL	DO	03040206120	PEE DEE
LANGSTON CK AT SC 253	S-264	AL	CR	03050109100	SALUDA
* LAWSONS FORK CK AT S-42-218 2.7 MI SSE OF INMAN	B-277	REC	FC	03050105180	BROAD
* LAWSONS FORK CK AT S-42-79 AT VALLEY FALLS	BL-005	REC	FC	03050105180	BROAD
* LAWSONS FORK CK AT UN# RD	B-278	REC	FC	03050105180	BROAD
LEMON CREEK AT S-05-541	CSTL-116	REC	FC	03050207070	SALKEHATCHIE
LICK CK AT S-42-118 1 1/4 MI SW WOODRUFF	B-038	REC	FC	03050108010	BROAD
LIGHTWOOD KNOT CK OFF S-32-77 AT BATESBURG WATER INTAKE	E-101	REC	FC	03050203010	EDISTO
LIMESTONE CK AT S-11-301	B-128	REC	FC	03050105130	BROAD
LITTLE BULL CREEK AT SC 33	E-076	REC	FC	03050206010	EDISTO
LITTLE CANE CREEK AT S-37-133	SV-343	REC	FC	03060101050	SAVANNAH
LITTLE EASTATOE CREEK AT S-39-49	SV-341	REC	FC	03060101030	SAVANNAH
LITTLE FORK CK AT S-13-265 1.5 MI SW JEFFERSON	PD-215	AL	BIO	03040202050	PEE DEE
* LITTLE LYNCHES RIVER AT SC 341, 4 MI SE KERSHAW	PD-109	REC	FC	03040202080	PEE DEE
LITTLE PINE TREE CREEK AT S-28-132	CW-223	REC	FC	03050104070	CATAWBA
LITTLE RIVER AT S-01-24	SV-164	REC	FC	03060103140	SAVANNAH
LITTLE RVR AT S-20-60 3.1 MI SW OF JENKINSVILLE	B-145	REC	FC	03050106070	BROAD
LITTLE RVR AT S-36-22 8.3 MI NW SILVERSTREET	S-099	REC	FC	03050109163	SALUDA
LITTLE RVR AT SC 560	S-038	REC	FC	03050109160	SALUDA
LITTLE RVR AT US 76 BUS IN LAURENS	S-034	REC	FC	03050109160	SALUDA

* Indicates TMDLs will be developed within 2 years

**Priority Two
Aquatic Life and Recreation Uses
Listed Alphabetically**

June 1998

SITE	STATION NUMBER	IMPAIRED USE	CAUSE	HYDROLOGIC UNIT	BASIN
LITTLE SALKEHATCHIE RIVER AT SC 63	CSTL-120	REC	FC	03050207110	SALKEHATCHIE
LITTLE SALKEHATCHIE RIVER AT SC 64	CSTL-117	REC	FC	03050207080	SALKEHATCHIE
LITTLE SALKEHATCHIE RIVER AT U.S. 601	CSTL-115	REC	FC	03050207060	SALKEHATCHIE
LITTLE SALUDA RVR AT S-41-39 5.2 MI NE SALUDA	S-123	REC	FC	03050109170	SALUDA
LITTLE WATEREE CK AT S-20-41 5 MI E OF WINNSBORO	CW-040	REC	FC	03050104010	CATAWBA
LK CAROLINE SPILLWAY	C-025	REC	FC	03050110020	SALUDA
LK HARTWELL, MAIN BODY AT BUOY BTWN MRKRS 11 & 12	SV-340	AL	CU	03060103020	SAVANNAH
LK HARTWELL, SENECA R ARM AT BUOY B/W MKRS S-28A & S-29	SV-288	AL	CU	03060101040	SAVANNAH
LK HARTWELL, SENECA R ARM AT BUOY B/W S-14 AND S-15	SV-339	AL	CU	03060101040	SAVANNAH
LK INSPIRATION - ST MATTHEWS (FRONT OF HEALTH DEPT)	C-058	AL	DO	03050111020	SANTEE
LK JOCASSEE AT CON OF THOMPSON AND WHITEWATER RVRS	SV-336	AL	CU	03060101020	SAVANNAH
LK KEOWEE ABOVE SC ROUTE 130 AND DAM	SV-338	AL	CU	03060101030	SAVANNAH
LK KEOWEE AT SC 188 - CANE CK ARM 3.5 MI NW SENECA	SV-311	AL	ZN	03060101050	SAVANNAH
LK MARION AT END OF S-14-64 AT CAMP BOB COOPER	ST-024	AL	ZN	03050111050	SANTEE
LK MARION, MIDSTREAM OF TAWCAW EMBAYMENT	SC-017	AL	P	03050111040	SANTEE
LK MARION, MIDSTREAM OF WYBOO CK EMBAYMENT	SC-023	AL	P	03050111050	SANTEE
LK MOULTRIE TRIB 10.4 MI UPSTREAM OF SC 6	SC-026	REC	FC	03050201010	SANTEE
LK MOULTRIE TRIB AT CROSS GENERATION STATION	SC-043	REC	FC	03050201010	SANTEE
LK MURRAY @ MARKER 63	S-279	AL	P	03050109190	SALUDA
* LK SECESSION, 1 1/4 MI BELOW SC ROUTE 28	SV-331	AL	P	03060103070	SAVANNAH
LK WARREN, BLACK CK ARM, AT S-25-41 5 MI SW OF HAMPTON	CSTL-075	AL	DO	03050208060	SALKEHATCHIE
LK WATEREE	CW-209	AL	P	03050104010	CATAWBA
LK WATEREE, WATEREE CK ARM	CL-091	AL	P	03050104010	CATAWBA
LK WYLIE AB MILL CK ARM AT END OF S-46-557	CW-197	AL	CU	03050101190	CATAWBA
LOG BRIDGE CK AT SC 162	MD-121	REC	FC	03050202050	SANTEE
LONG CANE CREEK AT S-01-159	SV-349	REC	FC	03060103150	SAVANNAH
LOWER THREE RUNS CK AT S-06-20 7.5 MI SW BARNWELL	SV-328	AL	CU	03060106130	SAVANNAH
LYNCHES RIVER AT SC 403	PD-319	AL	CU	03040202090	PEE DEE
LYNCHES RVR AT SC 9 W OF PAGELAND	PD-113	AL	CU	03040202030	PEE DEE
MAPLE SWP AT SC 57	PD-030	REC	FC	03040204030	PEE DEE
MCALPINE CK AT S-29-64	CW-064	AL	BIO	03050103028	CATAWBA
MECHAW CK AT SC RT 45	MD-241	REC	FC	03050112050	SANTEE
MENG CK AT SC 49 2.5 MI E OF UNION	B-064	REC	FC	03050106030	BROAD
MIDDLE SALUDA RVR AT SC 288 2.3 MI WSW SLATER	S-252	REC	FC	03050109020	SALUDA
MIDDLE SWP AT SC 51 3.5 MI SSE OF FLORENCE	PD-230	REC	FC	03040201130	PEE DEE
MIDDLE TYGER RVR AT SC 14 2 MI SSW GOWANSVILLE	B-148	REC	FC	03050107040	BROAD
MILL CK AT S-20-48, 10 MI SW OF WINNSBORO	B-338	REC	FC	03050106080	BROAD
MILL CK AT SC 262	C-021	REC	FC	03050110010	SALUDA
MILL CK TRIB ON DURHAM ST	S-161	AL	DO	03050109040	SALUDA

* Indicates TMDLs will be developed within 2 years

**Priority Two
Aquatic Life and Recreation Uses
Listed Alphabetically**

June 1998

SITE	STATION NUMBER	IMPAIRED USE	CAUSE	HYDROLOGIC UNIT	BASIN
MITCHELL CK AT CO RD 233 2.3 MI SSW OF JONESVILLE	B-199	REC	FC	03050107060	BROAD
MOUNTAIN CK AT S-23-335	B-186	REC	FC	03050108010	BROAD
MOUTH OF ELLIOTT CUT AT EDGE WTR DR (S-10-26 OFF HW 17)	MD-025	REC	FC	03050202050	SANTEE
MOUTH OF SKULL CK BTWN CHAN MARKERS 3 & 4 NEAR REDBO	MD-013	AL	DO	03050208110	SALKEHATCHIE
MUSH CK AT SC 253 BL TIGERVILLE	B-317	REC	FC	03050107010	BROAD
N FORK 12 MI CK AT US 178 2.9 MI N OF PICKENS	SV-206	REC	FC	03060101060	SAVANNAH
NEW RVR AT SC 170 9 MI W OF BLUFFTON	MD-118	REC	FC	03050208130	SALKEHATCHIE
NEWMAN SWP AT S-16-449 0.9 MI NE OF LAMAR	PD-229	REC	FC	03040202100	PEE DEE
NORRIS CK AT S-37-435 1 MI S OF WESTMINSTER	SV-301	REC	FC	03060102130	SAVANNAH
NORTH CK AT JCT WITH US 76 2.8 MI W OF CLINTON	S-135	REC	FC	03050109160	SALUDA
NORTH TYGER RVR AT US 221 7.6 MI NNE OF WOODRUFF	B-162	REC	FC	03050107030	BROAD
OX SWAMP AT US 521	PD-629	AL	BIO	03040205140	PEE DEE
PACOLET RVR AB DAM	BP-001	REC	FC	03050105190	BROAD
PAGE CK AT S-42-1258 1.7 MI SE LANDRUM	B-301	REC	FC	03050105155	BROAD
PEE DEE RVR AT US 378	PD-076	AL	CU	03040201140	PEE DEE
PEOPLES CK AT UNIMPROVED RD 2.3 MI E OF GAFFNEY	B-211	REC	FC	03050105094	BROAD
POCOTALIGO RVR AT US 17 AT POCOTALIGO	MD-007	REC	FC	03050208090	SALKEHATCHIE
POLK SWAMP AT S-18-19	E-109	REC	FC	03050205040	EDISTO
POLK SWP AT UNIMP RD S-18-180 2 MI S OF ST GEORGE	E-016	REC	FC	03050205040	EDISTO
PRESTWOOD LK OFF SONOVISTA CLUB DOCK, HARTSVILLE	PD-268	REC	FC	03040201110	PEE DEE
PROVIDENCE SWP AT E FRONTAGE RD TO I-95 NW OF HOLLY HILL	E-051	REC	FC	03050206050	EDISTO
RABON CK AT S-30-54 8.8 MI NW CROSS HILL	S-096	REC	FC	03050109130	SALUDA
RAWLS CREEK AT S-32-107	S-287	REC	FC	03050109210	SALUDA
REEDY RVR AT RIVERS ST, DOWNTOWN GREENVILLE	S-319	REC	FC	03050109100	SALUDA
REEDY RVR AT S-23-68	S-778	AL	BIO	03050109120	SALUDA
REEDY RVR AT UN# RD OFF US 276 .75 MI W TRAVELERS REST	S-073	REC	FC	03050109100	SALUDA
REEDY RVR ON HWY 418 AT FORK SHOALS	S-072	REC	FC	03050109100	SALUDA
REMICK SWAMP CREEK AT S-15-41	CSTL-584	AL	BIO	03050208010	SALKEHATCHIE
ROBERTS SWAMP AT SC 332	E-039	REC	FC	03050204070	EDISTO
ROCKY CK AT BRDG IN BATESVILLE 1 MI AB JCT WITH ENOREE	BE-007	REC	FC	03050108010	BROAD
ROCKY CK AT S-12-138	CW-236	REC	FC	03050103090	CATAWBA
ROCKY CK AT S-12-141 SE OF GREAT FALLS	CW-175	REC	FC	03050103090	CATAWBA
ROCKY CK AT S-12-335 3.5 MI E OF CHESTER	CW-002	REC	FC	03050103090	CATAWBA
ROCKY CK AT S-23-453 3.5 MI SW OF SIMPSONVILLE	S-091	REC	FC	03050109100	SALUDA
ROCKY CREEK AT S-33-87	SV-730	AL	BIO	03060107010	SAVANNAH
ROCKY RIVER AT SC 413	SV-650	AL	BIO	03060103070	SAVANNAH
ROCKY RVR AT S-04-152	SV-041	REC	FC	03060103070	SAVANNAH
ROSS BR TO TURKEY CK AT SC 49 SW OF YORK	B-086	REC	FC	03050106020	BROAD
S PACOLET RVR AT S-42-866 1 MI SE CAMPOBELLO	B-302	REC	FC	03050105160	BROAD

**Priority Two
Aquatic Life and Recreation Uses
Listed Alphabetically**

June 1998

SITE	STATION NUMBER	IMPAIRED USE	CAUSE	HYDROLOGIC UNIT	BASIN
SALKEHATCHIE RIVER AT SC 63	CSTL-104	REC	FC	03050207040	SALKEHATCHIE
SALKEHATCHIE RIVER AT U.S. 301 & 321	CSTL-048	REC	FC	03050207030	SALKEHATCHIE
SALKEHATCHIE RVR AT SC 278 2.5 MI S BARNWELL	CSTL-003	REC	FC	03050207030	SALKEHATCHIE
SALKEHATCHIE RVR AT SC 64 2 MI W OF BARNWELL	CSTL-028	AL	CU	03050207010	SALKEHATCHIE
SALUDA RVR AT FARRS BRDG ON SC 183 7 MI NE EASLEY	S-250	REC	FC	03050109040	SALUDA
SALUDA RVR AT MEPCO ELECT. PLANT WATER INTAKE SSE IRMO	S-149	AL	DO	03050109210	SALUDA
SALUDA RVR AT US 25 BYPASS 1.5 MI ESE WARE SHOALS	S-125	AL	PEST	03050109080	SALUDA
SALUDA RVR JUST BELOW LK MURRAY DAM	S-152	AL	DO	03050109210	SALUDA
SALUDA RVR TRIB ON S-23-53	S-267	REC	FC	03050109040	SALUDA
SAND RVR AT OLD US 1 1.2 MI SE WARRENVILLE	SV-069	REC	FC	03060106050	SAVANNAH
SANDERS BR AT S-25-50	CSTL-011	AL	BIO	03050208070	SALKEHATCHIE
SANDERS BR AT SC 278	CSTL-010	REC	FC	03050208070	SALKEHATCHIE
SANDERS BRANCH AT SC RD 363	CSTL-108	REC	FC	03050208070	SALKEHATCHIE
SAVANNAH RVR AT SC 28 1.6 MI NNW OF BEACH ISLAND	SV-252	REC	FC	03060106060	SAVANNAH
SAVANNAH RVR AT US 301 12.5 MI SW ALLENDALE	SV-118	AL	ZN	03060106140	SAVANNAH
SAWNEYS CK AT S-20-151	CW-228	REC	FC	03050104050	CATAWBA
SAWNEYS CK AT S-28-37	CW-079	REC	FC	03050104050	CATAWBA
SCAPE ORE SWAMP AT S-31-108	PD-355	REC	FC	03040205030	PEE DEE
SCOTT CK AT SC 34 SW OF NEWBERRY	S-044	REC	FC	03050109150	SALUDA
SHEM CK AT BRDG ON US 17	MD-071	REC	FC	03050202070	SANTEE
SIX & TWENTY CK AT S-04-29 8.2 MI SE OF PENDLETON	SV-181	REC	FC	03060101040	SAVANNAH
SIX MILE CREEK AT S-39-160	SV-205	REC	FC	03060101040	SAVANNAH
SIXMILE CREEK AT S-29-54	CW-176	REC	FC	03050103038	CATAWBA
SKIPPER CK AT SC 145	PD-613	AL	BIO	03040201100	PEE DEE
SOUTH FORK CROWDERS CK AT S-46-79 4.5 MI NW OF CLOVER	CW-192	REC	FC	03050101190	CATAWBA
SOUTH SALUDA RIVER AT S-23-101	S-087	REC	FC	03050109020	SALUDA
SOUTH TYGER RIVER AT S-42-242	B-005A	AL	BIO	03050107010	BROAD
SPEARS CK AT US 601	CW-166	REC	FC	03050104090	CATAWBA
SPIVEY CK AT S-42-208 2.5 MI SSE OF LANDRUM	B-103	REC	FC	03050105160	BROAD
SPRING GROVE CK AT S-14-26	SC-009	REC	FC	03050111010	SANTEE
STEELE CK AT S-46-22 N OF FORT MILL	CW-009	REC	FC	03050103028	CATAWBA
STONO RVR AT SC 700	MD-026	AL	CU	03050202070	SANTEE
STREAM FROM NEW SED POND AT GSX	SC-056	AL	PH	03050111010	SANTEE
SUGAR CK AT SC 160 E OF FORT MILL	CW-013	AL	ZN	03050103028	CATAWBA
SUGAR CK US OF CONFLUENCE W/ MCALPINE CK	CW-246	AL	BIO	03050103028	CATAWBA
TAWCAW CK AT S-14-127 3.2 MI S OF SUMMERTON	ST-018	REC	FC	03050111040	SANTEE
THICKETTY CK AT SC 18 8.3 MI S OF GAFFNEY	B-133	REC	FC	03050105130	BROAD
THICKETTY CK AT SC 211 2 MI AB JCT WITH BROAD RVR	B-062	REC	FC	03050105130	BROAD
THICKETTY CREEK AT S-11-164	B-095	REC	FC	03050105130	BROAD

* Indicates TMDLs will be developed within 2 years

**Priority Two
Aquatic Life and Recreation Uses
Listed Alphabetically**

June 1998

SITE	STATION NUMBER	IMPAIRED USE	CAUSE	HYDROLOGIC UNIT	BASIN
THOMPSON CK AT S-13-243 0.8 MI NE OF CHESTERFIELD	PD-246	REC	FC	03040201062	PEE DEE
THREE & TWENTY CREEK AT S-04-29	SV-735	AL	BIO	03060101100	SAVANNAH
TIMS BR AT SRP ROAD C	SV-324	REC	FC	03060106100	SAVANNAH
TINKER CK AT S-44-278, 9 MI SSE OF UNION	B-336	REC	FC	03050107060	BROAD
TINKER CK AT UN# CO RD 1.7 MI SSE OF UNION	B-287	REC	FC	03050107060	BROAD
TINKERS CK AT S-12-599	CW-234	REC	FC	03050103070	CATAWBA
* TODD'S BR AT S-29-564 1.5 MI NE OF KERSHAW	PD-005	REC	FC	03040202070	PEE DEE
TOOLS FORK AT S-46-195 7 MI NW OF ROCK HILL	CW-212	REC	FC	03050103060	CATAWBA
TOSCHS CK AT RD TO SEWAGE PT OFF HWY S-44-92 SW OF UNION	B-067B	REC	FC	03050107060	BROAD
TOSCHS CK AT US 176 2 MI SW OF UNION	B-067A	REC	FC	03050107060	BROAD
TRIB TO BROAD MOUTH CREEK AT S-04-205	S-776	AL	BIO	03050109090	SALUDA
TRIB TO MENG CK AT CLVT ON S-44-384 3 MI E OF UNION	B-243	REC	FC	03050106030	BROAD
TRIB TO N TYGER RVR AT UN# RD	B-315	REC	FC	03050107020	BROAD
TURKEY CK AT LIBERTY ST IN SUMTER	PD-098	REC	FC	03040205080	PEE DEE
TURKEY CK S-22-42 SW OF GEORGETOWN	MD-076N	REC	FC	03040207040	PEE DEE
TURKEY CREEK AT US 521	PD-040	REC	FC	03040205080	PEE DEE
TWELVEMILE CREEK AT S-29-55 0.3 MI NW OF VAN WYCK	CW-083	REC	FC	03050103038	CATAWBA
TYGER RVR AT S-42-50 E. WOODRUFF	B-008	REC	FC	03050107050	BROAD
UNNAMED CK ADJACENT TO WTR PLT AT JOHNSTON AT S-19-41	E-001	REC	FC	03050204010	EDISTO
UNNAMED CK ON MAW BRDG RD	SV-136	REC	FC	03060101070	SAVANNAH
UNNAMED TRIB TO HALFWAY SWAMP CK AT S-09-158	CW-242	REC	FC	03050111020	CATAWBA
UPPER THREE RUNS CK AT SRP ROAD A	SV-325	REC	FC	03060106100	SAVANNAH
WACCAMAW RVR & ICWW 1 MI BL JCT-AT BUCKSPORT LANDING	MD-146	AL	DO	03040206140	PEE DEE
WACCAMAW RVR 1/4 MI UPSTRM OF JCT WITH ICWW	MD-136	AL	DO	03040206140	PEE DEE
WACCAMAW RVR AT COX'S FERRY ON S-26-110	MD-111	AL	DO	03040206140	PEE DEE
WACCAMAW RVR AT US 501 BY PASS AROUND CONWAY	MD-110	AL	DO	03040206140	PEE DEE
WACCAMAW RVR NR MOUTH OF BULL CK AT MARKER 50	MD-137	AL	DO	03040206140	PEE DEE
WANDO RVR AT SC 41	MD-115	AL	CU	03050201080	SANTEE
WARRIOR CK AT US 221, 8 MI NNE OF LAURENS	B-150	REC	FC	03050108030	BROAD
WASSAMASSAW SWP AT US 176	CSTL-063	REC	FC	03050202010	SANTEE
WATEREE RVR AT I-20	CW-214	AL	DO	03050104030	CATAWBA
WATEREE RVR AT US 1	CW-019	AL	DO	03050104030	CATAWBA
WHIPPY SWAMP AT S-25-13	CSTL-076	REC	FC	03050207050	SALKEHATCHIE
WILDCAT CK AT S-46-650	CW-006	REC	FC	03050103060	CATAWBA
WILLOW CK AT SC 327	PD-630	AL	BIO	03040201130	PEE DEE
WILLOW SWAMP AT S-15-27	CSTL-118	REC	FC	03050207100	SALKEHATCHIE
WILSON CK AT S-24-124	S-235	REC	FC	03050109140	SALUDA
WILSON CREEK AT SC 413	SV-185	AL	BIO	03060103080	SAVANNAH
WINNSBORO BR AT US 321	B-123	REC	FC	03050106080	BROAD

* Indicates TMDLs will be developed within 2 years

**Priority Two
Aquatic Life and Recreation Uses
Listed Alphabetically**

June 1998

SITE	STATION NUMBER	IMPAIRED USE	CAUSE	HYDROLOGIC UNIT	BASIN
WINNSBORO BR BELOW PLANT OUTFALL	B-077	REC	FC	03050106080	BROAD
WINYAH BAY AT JCT OF PEE DEE & WACCAMAW AT MARKER 92	MD-080	AL	ZN	03040207050	PEE DEE
WOODSIDE BR AT US 123 1.5 MI E OF LIBERTY	SV-241	REC	FC	03060101090	SAVANNAH

**Priority Two
Fish Consumption Use
Listed Alphabetically**

June 1998

SITE	IMPAIRED USE	CAUSE	HYDROLOGIC UNIT	BASIN
BLACK RIVER DRAINAGE, FRESHWATER PORTIONS ONLY	REC/FSH CON	HG	03040205	PEE DEE
BROAD-ST. HELENA DRAINAGE, FRESHWATER PORTIONS ONLY	REC/FSH CON	HG	03050208	SALKEHATCHIE
CONGAREE RIVER DRAINAGE	REC/FSH CON	HG	03050110	SALUDA
COOPER RIVER DRAINAGE, FRESHWATER PORTIONS ONLY, EXCLUDING LK MOULTRIE	REC/FSH CON	HG	03050201	SANTEE
EDISTO RIVER DRAINAGE, FRESHWATER PORTIONS ONLY	REC/FSH CON	HG	03050205	EDISTO
FOUR HOLE SWAMP DRAINAGE	REC/FSH CON	HG	03050206	EDISTO
LITTLE PEE DEE RIVER DRAINAGE, FRESHWATER PORTIONS ONLY	REC/FSH CON	HG	03040204	PEE DEE
LK MARION AND DRAINAGE	REC/FSH CON	HG	03050111	SANTEE
LOWER BROAD RIVER ONLY, NOT INCLUDING ALL DRAINAGE	REC/FSH CON	HG	03050106	BROAD
LOWER PEE DEE RIVER DRAINAGE, FRESHWATER PORTIONS ONLY	REC/FSH CON	HG	03040201	PEE DEE
LOWER SAVANNAH RIVER DRAINAGE, FRESHWATER PORTIONS ONLY	REC/FSH CON	HG, CS, SR	03060109	SAVANNAH
LUMBER RIVER DRAINAGE	REC/FSH CON	HG	03040203	PEE DEE
LYNCHES RIVER DRAINAGE	REC/FSH CON	HG	03040202	PEE DEE
MIDDLE SAVANNAH RIVER DRAINAGE	REC/FSH CON	HG, CS, SR	03060106	SAVANNAH
NORTH FORK EDISTO RIVER DRAINAGE	REC/FSH CON	HG	03050203	EDISTO
SALKEHATCHIE RIVER DRAINAGE	REC/FSH CON	HG	03050207	SALKEHATCHIE
SAMPIT, COASTAL SOUTH CAROLINA, FRESHWATER PORTIONS ONLY	REC/FSH CON	HG	03040207	PEE DEE
SANTEE RIVER DRAINAGE, FRESHWATER PORTIONS ONLY	REC/FSH CON	HG	03050112	SANTEE
SOUTH CAROLINA COASTAL, FRESHWATER PORTIONS ONLY	REC/FSH CON	HG	03050202	SANTEE
SOUTH FORK EDISTO RIVER DRAINAGE	REC/FSH CON	HG	03050204	EDISTO
WACCAMAW RIVER DRAINAGE, FRESHWATER PORTIONS ONLY	REC/FSH CON	HG	03040206	PEE DEE

**Priority Two
Shellfish Harvesting Use
Listed by Shellfish Growing Area**

June 1998

SITE	MANAGEMENT AREA	IMPAIRED USE	CAUSE	HYDROLOGIC UNIT	ACRES	BASIN
Garden City - northeast of Atlantic Avenue	04	REC/SFH	FC	03040207020200	101.06	PEE DEE
Murrells Inlet-between Atlantic Ave & a line extending from Mt. Gilead Canal entrance (Sta 04-27) to Shellfish Sta 04-26	04	REC/SFH	FC	03040207020200	180.75	PEE DEE
Murrells Inlet - Lagoon & creek north of Sta 04-02	04	REC/SFH	FC	03040207020200	2.12	PEE DEE
Murrells Inlet - Parsonnage Creek from Woodland Landing to Voyagers View Marina closure zone	04	REC/SFH	FC	03040207020200	8.92	PEE DEE
Murrells Inlet - Parsonnage Creek from Woodland Landing to Allston Creek	04	REC/SFH	FC	03040207020200	9.01	PEE DEE
Murrells Inlet - Adjacent to mainland W of Allston Creek	04	REC/SFH	FC	03040207020200	95.93	PEE DEE
Murrells Inlet - Huntington Beach causeway NE to Sta 04-28	04	REC/SFH	FC	03040207020200	58.94	PEE DEE
North Inlet - Debidue to Bass Hole Bay	05	REC/SFH	FC	03040207040020	533.70	PEE DEE
Oyster Bay, Mud Bay, mid portions of Winyah Bay	05	REC/SFH	FC	03040207040020	7298.45	PEE DEE
Brackish pond adjacent to No Man's Friend Creek	05	REC/SFH	FC	03040207040020	0.39	PEE DEE
Brackish water ponds on Baruch property north of Mud Bay	05	REC/SFH	FC	03040207040020	0.57	PEE DEE
Oyster Bay, Mud Bay, mid portions of Winyah Bay	05	REC/SFH	FC	03040207040020	0.00	PEE DEE
Area adjacent to Mud Bay - brackish pond on North Island	05	REC/SFH	FC	03040207040020	16.17	PEE DEE
Area adjacent to Mud Bay - brackish pond on North Island	05	REC/SFH	FC	03040207040020	1.66	PEE DEE
Oyster Bay, Mud Bay, mid portions of Winyah Bay	05	REC/SFH	FC	03040207040030	2175.49	PEE DEE
Brackish water ponds on Baruch property north of Mud Bay	05	REC/SFH	FC	03040207040030	3.13	PEE DEE
Brackish water ponds on Baruch property north of Mud Bay	05	REC/SFH	FC	03040207040030	2.20	PEE DEE
Brackish water ponds on Baruch property north of Mud Bay	05	REC/SFH	FC	03040207040030	0.36	PEE DEE
Oyster Bay, Mud Bay, mid portions of Winyah Bay	05	REC/SFH	FC	03040207040040	1840.76	PEE DEE
North & South Santee Rivers, North Santee Bay, Hwy. 17 seaward - Georgetown County portions only	06A	REC/SFH	FC	03050112060010	0.86	SANTEE
North & South Santee Rivers, North Santee Bay, Hwy. 17 seaward - Georgetown County portions only	06A	REC/SFH	FC	03050112060020	4772.56	SANTEE
Cedar Island Point marsh	06A	REC/SFH	FC	03050112060020	4.76	SANTEE
Cedar Island Point marsh	06A	REC/SFH	FC	03050112060020	4.01	SANTEE
Cedar Island Point marsh	06A	REC/SFH	FC	03050112060020	2.36	SANTEE
North & South Santee Rivers, North Santee Bay, Hwy. 17 seaward - Georgetown County portions only	06A	REC/SFH	FC	03050112060030	10524.59	SANTEE
North & South Santee Rivers, North Santee Bay, Hwy. 17 seaward - Georgetown County portions only	06A	REC/SFH	FC	03050112060030	0.35	SANTEE
North & South Santee Rivers, North Santee Bay, Hwy. 17 seaward - Georgetown County portions only	06A	REC/SFH	FC	03050112060030	31.28	SANTEE
South Santee River - Charleston County portions only	06B	REC/SFH	FC	03050112060020	1756.88	SANTEE
Marsh area adjacent to AIWW & South Santee River & encompassed by Alligator Creek	06B	REC/SFH	FC	03050112060020	231.35	SANTEE
Aiww - South Santee to Jeremy Island, incl. portions of Alligator, Casino, Skrine, Du Pree, & Ramhorn Crks.	06B	REC/SFH	FC	03050112060020	186.35	SANTEE
Marsh areas along Murphy Island bordering the South Santee River	06B	REC/SFH	FC	03050112060020	142.16	SANTEE
Marsh area adjacent to AIWW & South Santee River & encompassed by Alligator Creek	06B	REC/SFH	FC	03050112060020	27.40	SANTEE
Aiww - South Santee to Jeremy Island, incl. portions of Alligator, Casino, Skrine, Du Pree & Ramhorn Crks.	06B	REC/SFH	FC	03050202060010	3241.26	SANTEE
Casino Creek - middle portions	06B	REC/SFH	FC	03050202060010	751.51	SANTEE
Portions of Du Pree & Skrine Creeks	06B	REC/SFH	FC	03050202060010	532.71	SANTEE
Alligator Creek - southern portions	06B	REC/SFH	FC	03050202060010	72.12	SANTEE
AIWW - Jeremy Creek to Venning Creek, including Awendaw, Tibwin, & Doehaul Creeks	07	REC/SFH	FC	03050202060010	2254.16	SANTEE
AIWW - Jeremy Creek to Venning Creek, including Awendaw, Tibwin, & Doehaul Creeks	07	REC/SFH	FC	03050202060020	1.09	SANTEE
AIWW - Jeremy Creek to Venning Creek, including Awendaw, Tibwin, & Doehaul Creeks	07	REC/SFH	FC	03050202060020	5.59	SANTEE
AIWW - Jeremy Creek to Venning Creek, including Awendaw, Tibwin, & Doehaul Creeks	07	REC/SFH	FC	03050202060020	1541.05	SANTEE
AIWW - Jeremy Creek to Venning Creek, including Awendaw, Tibwin, & Doehaul Creeks	07	REC/SFH	FC	03050202060020	1.66	SANTEE
Graham Creek	07	REC/SFH	FC	03050202060020	27.89	SANTEE
AIWW - Jeremy Creek to Venning Creek, including Awendaw, Tibwin, & Doehaul Creeks	07	REC/SFH	FC	03050202060050	15.97	SANTEE
AIWW - Jeremy Creek to Venning Creek, including Awendaw, Tibwin, & Doehaul Creeks	07	REC/SFH	FC	03050202060050	1.12	SANTEE

**Priority Two
Shellfish Harvesting Use
Listed by Shellfish Growing Area**

June 1998

SITE	MANAGEMENT AREA	IMPAIRED USE	CAUSE	HYDROLOGIC UNIT	ACRES	BASIN
AIWW - Jeremy Creek to Venning Creek, including Awendaw, Tibwin, & Doehaul Creeks	07	REC/SFH	FC	03050202060050	232.32	SANTEE
Inlet Crk. - middle reaches	09A	REC/SFH	FC	03050202060040	31.77	SANTEE
AIWW - Hamlin Crk to Sta 18, Lower Hamlin Crk from AIWW to Long Island Marina closure	09A	REC/SFH	FC	03050202060040	217.12	SANTEE
Isle of Palms marsh area adjacent to Wild Dunes	09A	REC/SFH	FC	03050202060040	13.48	SANTEE
AIWW from Ben Sawyer to Conch Creek, incl. marsh and tributaries SE of AIWW to Sulliv	09A	REC/SFH	FC	03050202060040	263.09	SANTEE
Sullivans Island beach pond	09A	REC/SFH	FC	03050202060040	2.74	SANTEE
Sullivans Island beach pond	09A	REC/SFH	FC	03050202060040	2.41	SANTEE
Sullivans Island beach ponds	09A	REC/SFH	FC	03050202060040	0.66	SANTEE
Sullivans Island beach ponds	09A	REC/SFH	FC	03050202060040	0.76	SANTEE
Wando River and tributaries - Areas N & W of Sta 9B-11. All tribs. extending southward from the Wando W of 09B-11	09B	REC/SFH	FC	03050201080010	3138.97	SANTEE
Wando River upper tributary	09B	REC/SFH	FC	03050201080010	12.87	SANTEE
Wando River upper tributary	09B	REC/SFH	FC	03050201080010	8.13	SANTEE
Marsh near southern tributary of upper Wando River	09B	REC/SFH	FC	03050201080010	0.30	SANTEE
Nowell Crk and tributaries, Sta 9B-01 to headwaters	09B	REC/SFH	FC	03050201080020	2707.17	SANTEE
Wando River and tributaries. - Areas N & W of Sta 9B-11. All tribs. extending southward from the Wando W of 09B-11	09B	REC/SFH	FC	03050201080020	25.71	SANTEE
Boone Hall & Horlbeck Crks & adjacent marsh areas SE of Wando River	09B	REC/SFH	FC	03050201080020	3044.78	SANTEE
Marsh near Boone Hall Creek	09B	REC/SFH	FC	03050201080020	6.64	SANTEE
Wando River btween Nowell Crk and Hwy 526	09B	REC/SFH	FC	03050201080020	857.38	SANTEE
Wando River btween Nowell Crk and Hwy 526	09B	REC/SFH	FC	03050201080020	0.75	SANTEE
Marsh near Boone Hall Creek	09B	REC/SFH	FC	03050201080020	16.24	SANTEE
Marsh near Rathall Crk	09B	REC/SFH	FC	03050201080020	0.87	SANTEE
Marsh near Rathall Crk	09B	REC/SFH	FC	03050201080020	3.40	SANTEE
Marsh near Horlbeck Crk	09B	REC/SFH	FC	03050201080020	1.82	SANTEE
Marsh near Horlbeck Crk	09B	REC/SFH	FC	03050201080020	4.44	SANTEE
Marsh near Horlbeck Crk	09B	REC/SFH	FC	03050201080020	0.55	SANTEE
Wando River and tributaries - Areas N & W of Sta 9B-11. All tribs. extending southward from the Wando W of 09B-11	09B	REC/SFH	FC	03050201080030	2165.17	SANTEE
Wando River upper tributary	09B	REC/SFH	FC	03050201080030	5.29	SANTEE
Wando River and tributaries - Areas N & W of Sta 9B-11. All tribs. extending southward from the Wando W of 09B-11	09B	REC/SFH	FC	03050201080030	0.03	SANTEE
Schooner Creek and tributaries between Sta 10-18A and Sta 10A-19	10A	REC/SFH	FC	03050202070030	1936.07	SANTEE
Rathall Creek- within 1000' of Sta 10A-30	10A	REC/SFH	FC	03050202070030	64.90	SANTEE
Elliott Cut	11	REC/SFH	FC	03050202040020	42.91	SANTEE
Stono River Estuary btw. AIWW Markers 27 & 63	11	REC/SFH	FC	03050202050040	776.97	SANTEE
Stono River Estuary btw. AIWW Markers 27 & 63	11	REC/SFH	FC	03050202050050	1006.30	SANTEE
Stono River Estuary btw. AIWW Markers 27 & 63	11	REC/SFH	FC	03050202050050	0.28	SANTEE
Stono River Estuary btw. AIWW Markers 27 & 63	11	REC/SFH	FC	03050202050060	12.03	SANTEE
Stono River Estuary btw. AIWW Markers 27 & 63	11	REC/SFH	FC	03050202050060	247.12	SANTEE
Stono River Estuary btw. AIWW Markers 27 & 63	11	REC/SFH	FC	03050202050070	4430.66	SANTEE
Stono River Estuary btw. AIWW Markers 27 & 63	11	REC/SFH	FC	03050202050070	0.05	SANTEE
Stono River Estuary btw. AIWW Markers 27 & 63	11	REC/SFH	FC	03050202050070	6.47	SANTEE
Stono River Estuary btw. AIWW Markers 27 & 63	11	REC/SFH	FC	03050202050070	1.83	SANTEE
Elliott Cut	11	REC/SFH	FC	03050202050070	9.07	SANTEE
Elliott Cut	11	REC/SFH	FC	03050202050070	0.38	SANTEE
Elliott Cut	11	REC/SFH	FC	03050202050070	0.05	SANTEE
Elliott Cut	11	REC/SFH	FC	03050202050070	0.26	SANTEE

**Priority Two
Shellfish Harvesting Use
Listed by Shellfish Growing Area**

June 1998

SITE	MANAGEMENT AREA	IMPAIRED USE	CAUSE	HYDROLOGIC UNIT	ACRES	BASIN
Elliott Cut	11	REC/SFH	FC	03050202050070	0.27	SANTEE
Elliott Cut	11	REC/SFH	FC	03050202050070	2.62	SANTEE
Elliott Cut	11	REC/SFH	FC	03050202050070	0.71	SANTEE
Elliott Cut	11	REC/SFH	FC	03050202050080	683.36	SANTEE
Elliott Cut	11	REC/SFH	FC	03050202050080	10.82	SANTEE
Elliott Cut	11	REC/SFH	FC	03050202050080	91.34	SANTEE
Elliott Cut	11	REC/SFH	FC	03050202050080	0.77	SANTEE
Stono River Estuary from Hwy 700 (Sta 11-02) to Sta 11-03	11	REC/SFH	FC	03050202070010	2250.58	SANTEE
Stono River Estuary from the vicinity of it's confluence with the Kiawah River to Sta 11-03	11	REC/SFH	FC	03050202070010	0.01	SANTEE
Stono River Estuary from Hwy 700 (Sta 11-02) to Sta 11-03	11	REC/SFH	FC	03050202070020	2.87	SANTEE
Bass and Cinder Creeks	11	REC/SFH	FC	03050202070040	1259.00	SANTEE
Bass and Cinder Creeks	11	REC/SFH	FC	03050202070040	63.67	SANTEE
Bass and Cinder Creeks	11	REC/SFH	FC	03050202070040	6.33	SANTEE
Bass and Cinder Creeks	11	REC/SFH	FC	03050202070040	0.75	SANTEE
Bass and Cinder Creeks	11	REC/SFH	FC	03050202070040	1.17	SANTEE
Bass and Cinder Creeks	11	REC/SFH	FC	03050202070040	42.55	SANTEE
Captain Sam's Creek at Kiawah River headwaters	11	REC/SFH	FC	03050202070040	293.72	SANTEE
Captain Sam's Creek at Kiawah River headwaters	11	REC/SFH	FC	03050202070040	1.11	SANTEE
Captain Sam's Creek at Kiawah River headwaters	11	REC/SFH	FC	03050202070040	4.14	SANTEE
Captain Sam's Creek at Kiawah River headwaters	11	REC/SFH	FC	03050202070040	18.00	SANTEE
Captain Sam's Creek at Kiawah River headwaters	11	REC/SFH	FC	03050202070040	4.15	SANTEE
Stono River Estuary btw. AIWW Markers 27 & 63	11	REC/SFH	FC	03050205070010	605.87	EDISTO
Church Creek at Wadmalaw Sound to Bohicket Creek at Sta 12-46	12	REC/SFH	FC	03050205070010	27.03	EDISTO
Church Creek at Wadmalaw Sound to Bohicket Creek at Sta 12-46	12	REC/SFH	FC	03050205070010	1544.11	EDISTO
Church Creek at Wadmalaw Sound to Bohicket Creek at Sta 12-46	12	REC/SFH	FC	03050205070010	6.95	EDISTO
Church Creek at Wadmalaw Sound to Bohicket Creek at Sta 12-46	12	REC/SFH	FC	03050205070010	602.01	EDISTO
Church Creek at Wadmalaw Sound to Bohicket Creek at Sta 12-46	12	REC/SFH	FC	03050205070010	5.43	EDISTO
Wadmalaw Sound	12	REC/SFH	FC	03050205070010	8.18	EDISTO
Toogoodoo Creek headwaters to middle reaches at Sta 12-44	12	REC/SFH	FC	03050205070010	27.45	EDISTO
Toogoodoo Creek headwaters to middle reaches at Sta 12-44	12	REC/SFH	FC	03050205070020	2130.27	EDISTO
Toogoodoo Creek headwaters to middle reaches at Sta 12-44	12	REC/SFH	FC	03050205070020	6.12	EDISTO
Toogoodoo Creek headwaters to middle reaches at Sta 12-44	12	REC/SFH	FC	03050205070020	2.00	EDISTO
Toogoodoo Creek headwaters to middle reaches at Sta 12-44	12	REC/SFH	FC	03050205070020	31.79	EDISTO
Toogoodoo Creek headwaters to middle reaches at Sta 12-44	12	REC/SFH	FC	03050205070020	1.63	EDISTO
Toogoodoo Creek headwaters to middle reaches at Sta 12-44	12	REC/SFH	FC	03050205070020	14.55	EDISTO
Toogoodoo Creek headwaters to middle reaches at Sta 12-44	12	REC/SFH	FC	03050205070020	4.65	EDISTO
Toogoodoo Creek headwaters to middle reaches at Sta 12-44	12	REC/SFH	FC	03050205070030	2.04	EDISTO
Sand Creek - headwaters to Steamboat Creek	12	REC/SFH	FC	03050205070030	371.92	EDISTO
Church Creek at Wadmalaw Sound to Bohicket Creek at Sta 12-46	12	REC/SFH	FC	03050205070040	32.00	EDISTO
Church Creek at Wadmalaw Sound to Bohicket Creek at Sta 12-46	12	REC/SFH	FC	03050205070040	20.08	EDISTO
Church Creek at Wadmalaw Sound to Bohicket Creek at Sta 12-46	12	REC/SFH	FC	03050205070040	1393.37	EDISTO
Church Creek at Wadmalaw Sound to Bohicket Creek at Sta 12-46	12	REC/SFH	FC	03050205070040	30.67	EDISTO
South Edisto River from Sta 13-20 to vicinity of Watts Cut, incl. Watts Cutt to Sta 13-16	13	REC/SFH	FC	03050205060060	1860.58	EDISTO
South Edisto River from Sta 13-20 to vicinity of Watts Cut, incl. Watts Cutt to Sta 13-16	13	REC/SFH	FC	03050205060060	1110.34	EDISTO

**Priority Two
Shellfish Harvesting Use
Listed by Shellfish Growing Area**

June 1998

SITE	MANAGEMENT AREA	IMPAIRED USE	CAUSE	HYDROLOGIC UNIT	ACRES	BASIN
Store Creek and tributaries, incl. portions of St. Pierre btw. Sta 13-06 and Sta 13-0	13	REC/SFH	FC	03050205060070	1577.03	EDISTO
Sandy Creek from Sta 13-05 to Sta 13-05A	13	REC/SFH	FC	03050205060070	167.00	EDISTO
Fishing Creek btw Sta 13-05 and headwaters	13	REC/SFH	FC	03050205060070	877.04	EDISTO
Fishing Creek btw Sta 13-05 and headwaters	13	REC/SFH	FC	03050205060070	2.07	EDISTO
South Edisto River from Sta 13-20 to vicinity of Watts Cut, incl. Watts Cutt to Sta 13-16	13	REC/SFH	FC	03050205070030	305.31	EDISTO
Huspah Creek above Sta 14-18	14	REC/SFH	FC	03050208090050	342.76	SALKEHATCHIE
Rock Springs Creek	16	REC/SFH	FC	03050208100010	354.36	SALKEHATCHIE
Eddings Creek and tributaries	16	REC/SFH	FC	03050208100020	1883.53	SALKEHATCHIE
Coffin Creek	16	REC/SFH	FC	03050208100020	310.18	SALKEHATCHIE
Coffin Creek	16	REC/SFH	FC	03050208100020	191.66	SALKEHATCHIE
Coffin Creek	16	REC/SFH	FC	03050208100060	0.09	SALKEHATCHIE
Middle Creek from whale Branch to headwaters at Hwy 21	17	REC/SFH	FC	03050208090060	639.65	SALKEHATCHIE
Ballast Creek	17	REC/SFH	FC	03050208090110	160.48	SALKEHATCHIE
Ballast Creek	17	REC/SFH	FC	03050208090110	0.80	SALKEHATCHIE
Ballast Creek	17	REC/SFH	FC	03050208090110	0.05	SALKEHATCHIE
Ballast Creek	17	REC/SFH	FC	03050208100050	2.91	SALKEHATCHIE
Fish Haul Creek	20	REC/SFH	FC	03050208110010	149.23	SALKEHATCHIE

**Priority Three
Aquatic Life and Recreation Uses
Listed Alphabetically**

June 1998

SITE	STATION NUMBER	IMPAIRED USE	CAUSE	HYDROLOGIC UNIT	BASIN
ASHLEY RVR AT MAGNOLIA GARDENS	MD-049	REC	FC	03050202040	SANTEE
ASHLEY RVR AT SC 165	CSTL-102	REC	FC	03050202020	SANTEE
BEAVERDAM CK AT S-46-152 8 MI E OF CLOVER	CW-153	REC	FC	03050101190	CATAWBA
BIG BRUSHY CK AT S-04-52 8.3 MI N WILLIAMSTON	S-084	REC	FC	03050109060	SALUDA
BIG GENEROSTEE CK AT CO RD 104	SV-316	REC	FC	03060103030	SAVANNAH
BIG PINE TREE CK AT US 521, NW BRIDGE	CW-021	REC	FC	03050104070	CATAWBA
BROAD RVR AT SC 72/215/121 3 MI E OF CARLISLE	B-046	REC	FC	03050106010	BROAD
BROWN SWP AT S-34-31	PD-037	REC	FC	03040204070	PEE DEE
BUCK SWP AT S-17-33	PD-031	REC	FC	03040204050	PEE DEE
CALABASH BR AT S-46-414 2.5 MI SE OF CLOVER	CW-134	REC	FC	03050101200	CATAWBA
CANOE CK AT S-11-245 1/2 MI W OF BLACKSBURG	B-088	REC	FC	03050105094	BROAD
CHEROKEE CK AT US 29 3 MI E OF GAFFNEY	B-056	REC	FC	03050105110	BROAD
CHINQUAPIN CREEK AT SC 391 5.5 MI S BATESBURG	E-091	REC	FC	03050203010	EDISTO
CHURCH CK MOUTH	MD-246	REC	FC	03050202040	SANTEE
COOPER RIVER AT MARK CLARK BRIDGE (I-526)	MD-248	REC	FC	03050201050	SANTEE
COOPER RVR AB MOUTH OF SHIPYD CK AT CHANNEL BUOY 49	MD-045	REC	FC	03050201050	SANTEE
COOSAWHATCHIE RVR AT S-25-27 2.5 MI SW CUMMINGS	CSTL-109	AL	DO	03050208070	SALKEHATCHIE
COW CASTLE CK AT S-38-170	E-050	REC	FC	03050206030	EDISTO
CRANE CK AT S-40-43 UNDER I-20 - N COLA	B-316	REC	FC	03050106060	BROAD
CUPBOARD CK AT S-04-209 BL EFF FROM BELTON 2 PLANT	SV-140	REC	FC	03060103070	SAVANNAH
CUPBOARD CK AT S-04-733 AB BREAZEALE ST PLANT & BL BLAIR HIL	SV-139	REC	FC	03060103070	SAVANNAH
DUNCAN CK AT US 176 1.5 MI SE OF WHITMIRE	B-072	REC	FC	03050108043	BROAD
DURBIN CREEK AT SC 418	B-097	REC	FC	03050108010	BROAD
ENOREE RVR AT S-36-45 3.5 MI AB JCT WITH BROAD RVR	B-054	REC	FC	03050108050	BROAD
FORK CK AT S-13-770, 1.5 MI SW JEFFERSON	PD-068	AL	CU	03040202050	PEE DEE
GEORGES CK AT S-39-28	S-300	REC	FC	03050109050	SALUDA
GEORGES CK AT US 123A, EASLEY	S-063	REC	FC	03050109050	SALUDA
GEORGES CK BRANCH AT S-39-192, 2.6 MI NE EASLEY	S-005	REC	FC	03050109050	SALUDA
GOLDEN CK AT S-37-222 1.2 MI NW OF LIBERTY	SV-239	REC	FC	03060101070	SAVANNAH
GRAMLING CK AT CLVT ON SC 33 2 MI E OF ORANGEBURG	E-022	REC	FC	03050206010	EDISTO
GROVE CK AT UN# RD BELOW J P STEVENS ESTES PLANT	S-171	REC	FC	03050109040	SALUDA
GULLEY BR AT S-21-13, TIMROD PARK	PD-065	AL	CU	03040201130	PEE DEE
HANGING ROCK CK OFF S-29-84 1.6 MI S OF KERSHAW	PD-328	REC	FC	03040202070	PEE DEE
HARD LABOR CREEK AT S-24-164 BRIDGE	SV-151	REC	FC	03060107010	SAVANNAH
HILLS CREEK AT S-13-105	PD-333	REC	FC	03040202020	PEE DEE
HORTON CREEK AT S-29-95	PD-335	REC	FC	03040202070	PEE DEE
HUFF CK AT SC 418 1.6 MI NW FORK SHOALS	S-178	REC	FC	03050109110	SALUDA
KINGSTON LK NR PUMP STA ON LAKESIDE DR CONWAY	MD-107	REC	FC	03040206120	PEE DEE
KINLEY CK AT S-32-36 (ST. ANDREWS RD) IN IRMO	S-260	REC	FC	03050109210	SALUDA
LANGSTON CK AT SC 253	S-264	REC	FC	03050109100	SALUDA

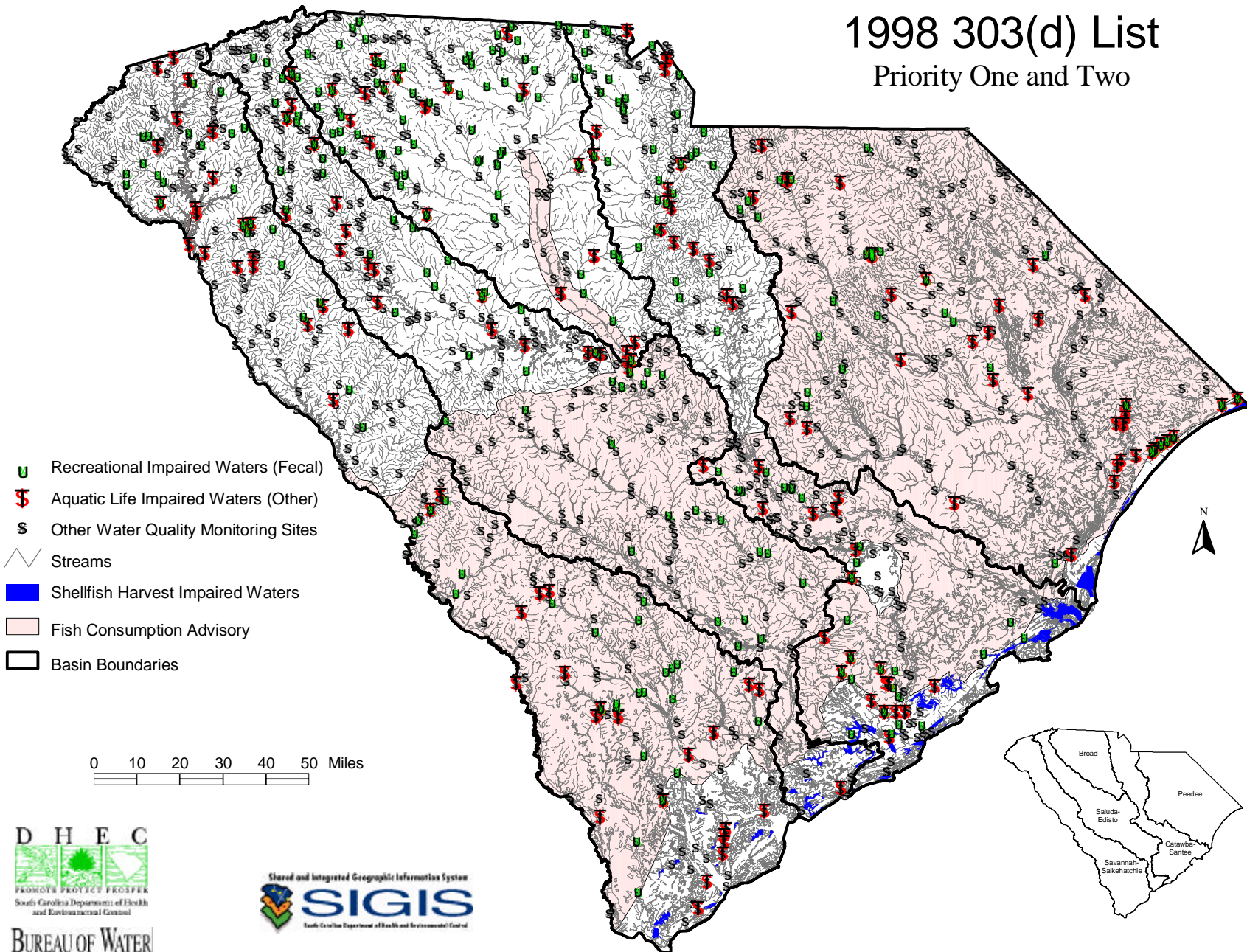
**Priority Three
Aquatic Life and Recreation Uses
Listed Alphabetically**








June 1998

SITE	STATION NUMBER	IMPAIRED USE	CAUSE	HYDROLOGIC UNIT	BASIN
LITTLE BUCK CK AT UN# CO RD 2.3 MI SW OF CHESNEE	B-259	REC	FC	03050105170	BROAD
LITTLE LYNCHES RIVER AT S-28-42	PD-343	REC	FC	03040202070	PEE DEE
LITTLE LYNCHES RVR AT US 601 2 MI NE KERSHAW	PD-006	REC	FC	03040202070	PEE DEE
LORICK BR AT PT UPSTRM OF JCT WITH SALUDA RVR	S-150	REC	FC	03050109210	SALUDA
LYNCHES RVR AT SC 9 W OF PAGELAND	PD-113	REC	FC	03040202030	PEE DEE
MCALPINE CK AT S-29-64	CW-064	REC	FC	03050103028	CATAWBA
MILL CK AT BENT BRIDGE RD, BL CAROLINA PLATING	S-315	AL	CR	03050109040	SALUDA
MILL CK TRIB ON DURHAM ST	S-161	AL	CR	03050109040	SALUDA
N BR WILDCAT CK AT S-29-39 1 MI S OF TRADESVILLE	PD-179	REC	FC	03040202030	PEE DEE
N PACOLET RVR AT S-42-956 6.5 MI E LANDRUM	B-026	REC	FC	03050105155	BROAD
N PACOLET RVR AT S-42-978, 1 MI SE OF FINGERVILLE	B-126	REC	FC	03050105155	BROAD
N SALUDA RVR AT BRDG AB JCT WITH SALUDA RVR E OF SC 186	S-004	REC	FC	03050109010	SALUDA
NINETY SIX CK AT SC 702 5.2 MI ESE OF 96	S-093	REC	FC	03050109140	SALUDA
PACOLET RVR AT BRDG ON S-42-737 2.9 MI NW OF COWPENS	B-163A	REC	FC	03050105170	BROAD
PACOLET RVR AT S-42-55 BL JCT OF N & S PACOLET R	B-028	REC	FC	03050105170	BROAD
PACOLET RVR AT S-42-59, BEACON LIGHT ROAD IN CLIFTON	B-331	REC	FC	03050105170	BROAD
POTTER BR ON RD 30 BL OUTFALL FROM HOUSING PROJ COWPENS	B-191	REC	FC	03050105170	BROAD
S TYGER RVR AT S-42-63	B-005	REC	FC	03050107010	BROAD
S TYGER RVR AT SC 290 3.7 MI E OF GREER	B-263	REC	FC	03050107010	BROAD
SALKEHATCHIE RVR AT SC 278 2.5 MI S BARNWELL	CSTL-003	AL	CU	03050207030	SALKEHATCHIE
SALUDA RVR AT USGS GAGING STATION, 1/2 MI BELOW I-20	S-298	REC	FC	03050109210	SALUDA
SANDERS BR AT S-25-50	CSTL-011	AL	DO	03050208070	SALKEHATCHIE
SANDY RVR AT SC 215 2.5 MI AB JCT WITH BROAD RVR	B-075	REC	FC	03050106040	BROAD
SAVANA BR AT S-32-72 1.7 MI NNW OF S CONGAREE	C-061	REC	FC	03050110020	SALUDA
SAVANNAH RVR AT US 17 8.9 MI SSW OF HARDEEVILLE	SV-191	REC	FC	03060109060	SAVANNAH
SAWNEY CK AT CO RD 1.5 MI SE OF CALHOUN FALLS	SV-052	REC	FC	03060103140	SAVANNAH
SMITH SWP AT S-34-19 1 MI E OF MARION	PD-320	REC	FC	03040201150	PEE DEE
SMITH SWP AT US 501 1.9 MI SSE OF MARION	PD-187	REC	FC	03040201150	PEE DEE
SUGAR CK US OF CONFLUENCE W/ MCALPINE CK	CW-246	REC	FC	03050103028	CATAWBA
THREE & TWENTY CREEK AT S-04-280	SV-111	REC	FC	03060101100	SAVANNAH
TOWN CK (W SIDE OF DRUM ISL) UNDER GRACE MEMORIAL BRDG	MD-047	REC	FC	03050201050	SANTEE
TURKEY CK 1 MI BL MILLIKEN BARNWELL OUTFALL AT CLINTON ST.	CSTL-001B	REC	FC	03050207020	SALKEHATCHIE
TWELVE MI CK AT S-39-51 N OF NORRIS	SV-015	REC	FC	03060101070	SAVANNAH
TWELVE MILE CK AT S-39-337	SV-137	REC	FC	03060101070	SAVANNAH
TWELVEMILE CREEK AT U.S. ROUTE 378	S-294	REC	FC	03050109210	SALUDA
TWENTYFIVE MILE CK AT S-28-05 3.7 MI W OF CAMDEN	CW-080	REC	FC	03050104060	CATAWBA
UNNAMED TRIB TO CATAWBA RVR AT HWY 161 0.4 MI W OF I-77	CW-221	REC	FC	03050103010	CATAWBA
WADBOO SWP AT SC 402	CSTL-113	REC	FC	03050201020	SANTEE
WALKER SW AT US 52 2.5 MI S ST STEPHENS	ST-007	REC	FC	03050201020	SANTEE
WAXHAW CK AT S-29-29	CW-145	REC	FC	03050103038	CATAWBA

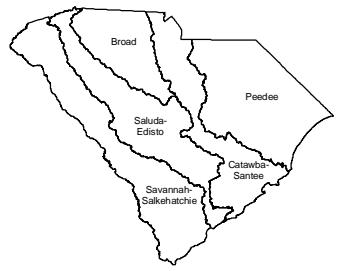
1998 303(d) List

Priority One and Two



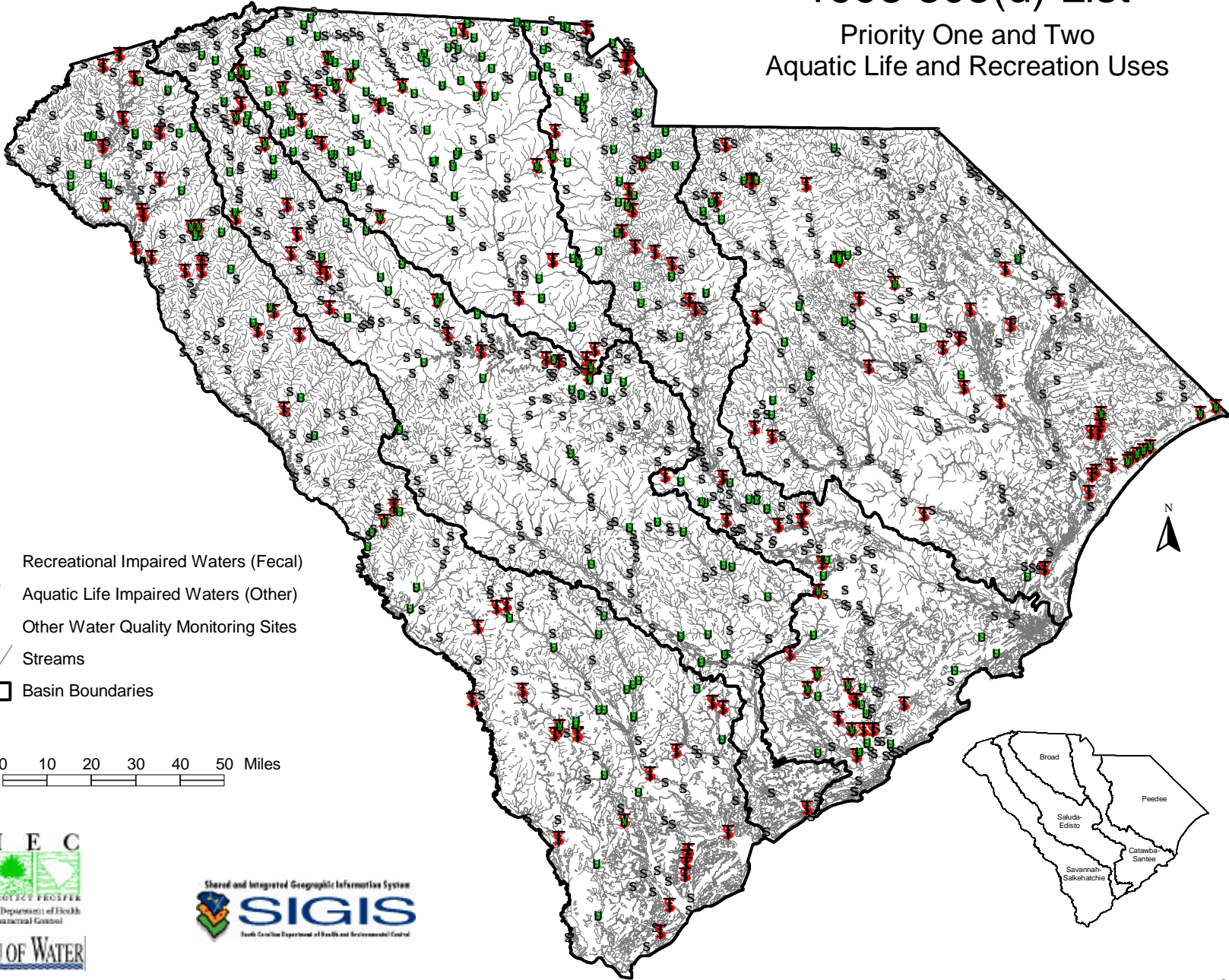
-  Recreational Impaired Waters (Fecal)
-  Aquatic Life Impaired Waters (Other)
-  Other Water Quality Monitoring Sites
-  Streams
-  Shellfish Harvest Impaired Waters
-  Fish Consumption Advisory
-  Basin Boundaries

0 10 20 30 40 50 Miles

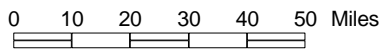


1998 303(d) List

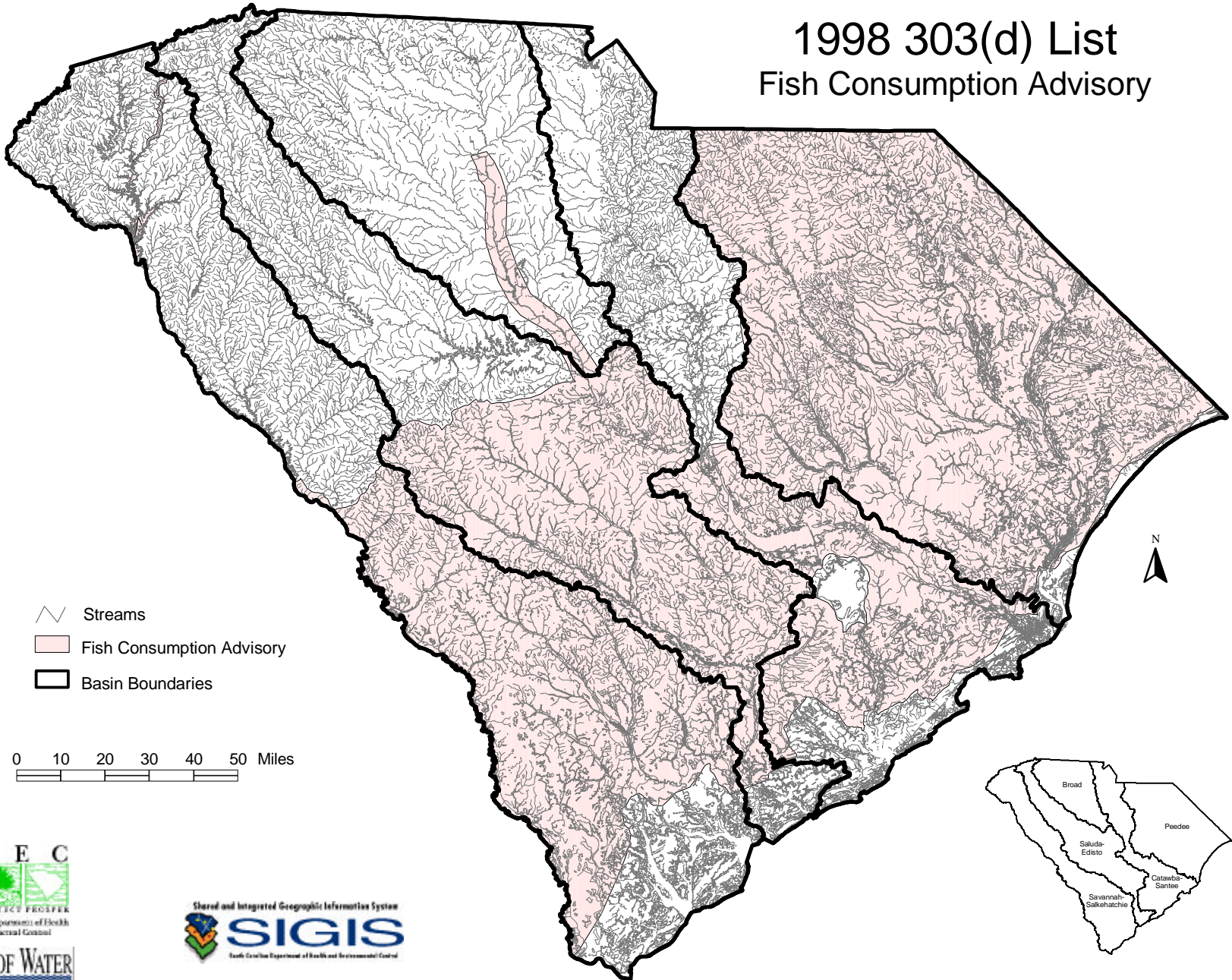
Priority One and Two Aquatic Life and Recreation Uses



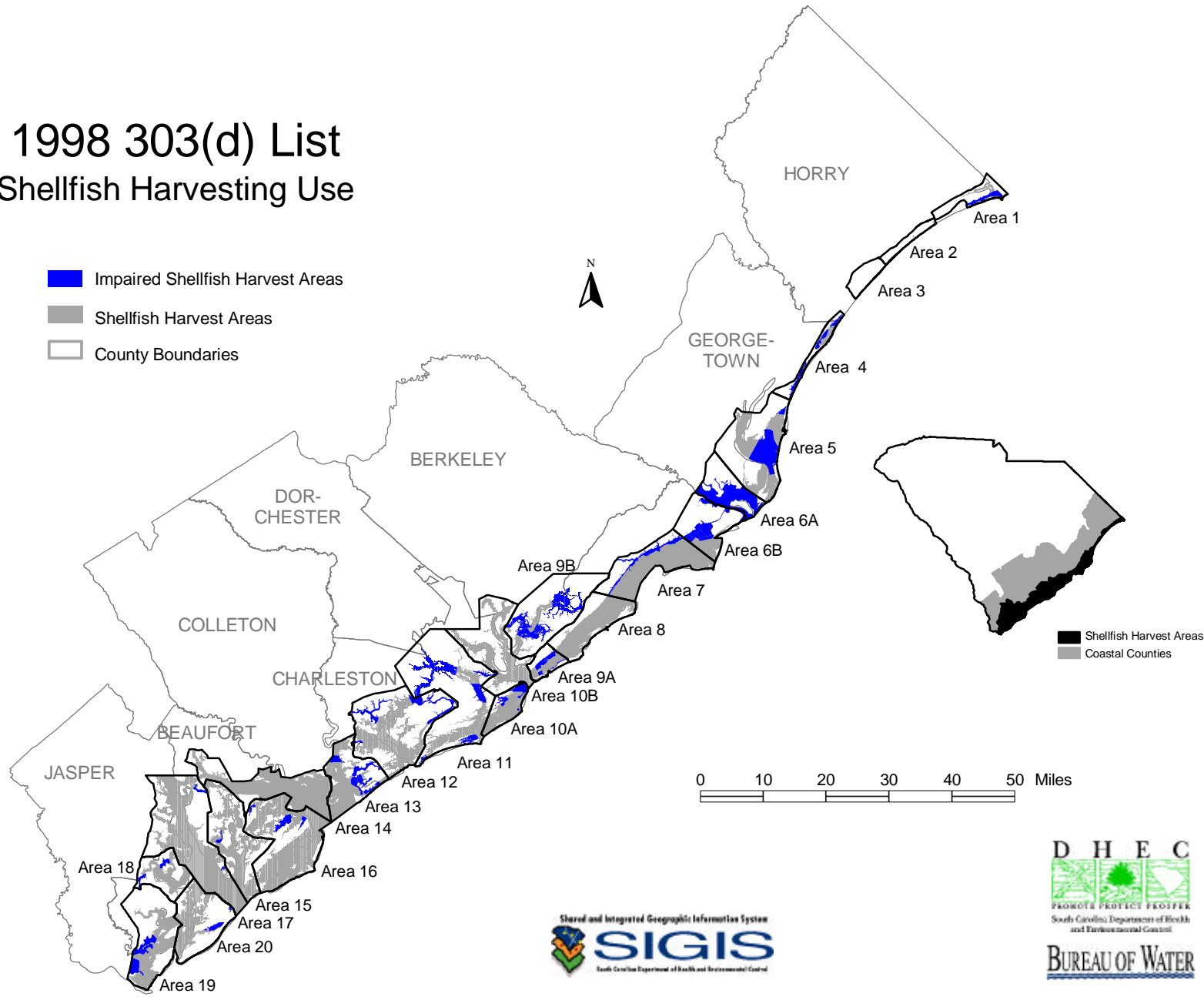
- Recreational Impaired Waters (Fecal)
- Aquatic Life Impaired Waters (Other)
- Other Water Quality Monitoring Sites
- Streams
- Basin Boundaries



1998 303(d) List Fish Consumption Advisory



1998 303(d) List Shellfish Harvesting Use



The Process for Listing and Delisting Waters for the 1998 303(d) List

The State of South Carolina Department of Health and Environmental Control (Department), Bureau of Water (the Bureau) uses a watershed approach, as encouraged in the August 8, 1997 EPA Guidance Memorandum: New Policies for Establishing and Implementing Total Maximum Daily Loads, to perform its permitting, water quality monitoring and data analysis. This approach divides the state into five major drainage basins. Permitting, monitoring and data analysis are performed according to a schedule which cycles through all basins in five years. The Department has a fixed ambient surface water monitoring network throughout the state. These stations are sampled every year. In addition to the fixed network, each year the Department activates additional stations in each basin. In accordance with the watershed cycle, more intensive water quality analysis is performed each year for a particular basin. Finally, permits are reissued every five years basin by basin.

All waters on the 1996 303(d) list have been analyzed for appropriate inclusion on the 1998 303(d) List as defined in 40 CFR 130.2(j) and the August 27, 1997 EPA Guidance Memorandum, National Clarifying Guidance for 1998 State and Territory Section 303(d) Listing Decisions. Current data have been evaluated and waters removed when standards are now being met. To assure that only impaired waters where required controls will not allow the water to meet standards are listed, a systematic review of all permits, enforcement actions, and current data was undertaken for waters listed in 1996. This review highlighted many Bureau activities which should allow waters to meet standards. Permit limits have been tightened and enforcement actions in the form of signed Consent Orders have been taken against facilities with discharges located on 303(d) listed waters. The Department believes these waters where required technology based limits have not been fully implemented should not be listed. However at EPA's direction, these waters have been added to the State's 1998 List (see Priority Three waters).

The cyclical nature of our permitting, intensive monitoring and data analysis result in a dynamic 303(d) list. As new waters are monitored, new impaired sites may be found which require listing. Sites where water quality improves require delisting. In addition as permits are reissued and limits tightened it may be appropriate to delist waters with causes of impairment that were addressed in the permits. The Bureau is developing TMDLs for waters on the 303(d) list. As these TMDLs are approved by EPA the waters will be delisted per the National Clarifying Guidance.

As outlined in 40 CFR 107(b)(6)(iv) and the National Clarifying Guidance, the Bureau prepared the following list of good causes justifying the differences between the 1996 and 1998 Lists. The attached 1996-1998 Reconciliation Worksheet accounts for each waterbody on the 1996 List and the 1998 List. The numbers in parentheses in the following list are used in the fourth column of the worksheet.

On the 1996 List TX was used as an abbreviation for toxics. On the 1998 List TX has been replaced with the actual parameter of concern, for example, zinc, copper, chromium, contaminated sediments

Good Cause (Reasons) for Differences Between the 1996 and 1998 303(d) List

or pesticides.

On the 1996 List NT was used as an abbreviation for nutrients. On the 1998 List NT has been replaced with the nutrient of concern, for example, phosphorous.

- # These are waters where required technology based limits have not been fully implemented. The Department believes listing these waters is inconsistent with 40 CFR 130.7. However at EPA's direction, these waters have been included on the List (see Priority Three waters).
- (1) This station is located in North Carolina. The Department has requested North Carolina to consider the Department's data for their 303(d) list.
- (2) This parameter shows a negative trend; however, standards are not expected to be violated in the next two years.
- (3) Further analysis of the data indicates standards are not violated; rather this is the natural condition of the waterbody. This applies primarily to dissolved oxygen. Many swamps and coastal waters have a naturally high input of organic material, are shallow, and slow moving. As a result, dissolved oxygen levels may naturally fall below the level defined in our state standards. The standards, South Carolina Regulation 61-68: Water Classifications and Standards, allow these deviations in dissolved oxygen levels to be considered natural conditions. Many of these waters were listed in 1996 based on a preliminary analysis of the data. The final data review was not available in time for the 1996 listing.
- (4) A change in analytical methodology of the data, as prescribed in the EPA Guidance document: Guidelines for Preparation of 1996 State Water Quality Assessments (305(b) Reports), indicates that standards are being met. Under this method the Department considered the percentage of violations of the standard as the basis for listing. Many of these waters were listed in 1996 based on a preliminary analysis of the data. The final data review was not available in time for the 1996 listing.
- (5) Permit limits for this parameter have been revised. Since required technology based limits have not been fully implemented, the Department believes listing these waters is inconsistent with 40 CFR 130.7. However at EPA's direction, the Department has added these waters to the 1998 List.
- (6) Enforcement action in the form of a signed Consent Order was taken for a facility violating permit limits for this parameter on this waterbody. Since required technology based limits have not been fully implemented, the Department believes listing these waters is inconsistent with 40 CFR 130.7. However at EPA's direction, the Department has added these waters to the 1998 List.

Good Cause (Reasons) for Differences Between the 1996 and 1998 303(d) List

- (7) Discharger eliminated. At EPA's direction the Department has added those waters where compliance with permit limits may not occur within two years. The Department believes this is inconsistent with the intent and language of 40 CFR 130.7.
- (8) Station now considered in watershed 03050205-060.
- (9) Groundwater contamination influencing surface water quality. Facility currently in assessment phase of remediation.
- (10) The most recent assessment data indicate standards are being met.
- (11) Now listed as Rocky Creek (station BE-007).
- (12) Now listed as Gilder Creek.
- (13) Station now considered in watershed 03040206-140.
- (14) This water was listed in 1996 assuming this site was Class SA. The correct classification is FW*. Standards are being met for this classification.
- (15) There is no Mill Creek in watershed 03050108-010. Waterbody mistakenly listed in 1996.
- (16) A management strategy for phosphorous has been developed upstream of this station. Facilities must comply with the new phosphorous limits by 2001.

RECONCILIATION WORKSHEET 303(D) LIST
(1996 TO 1998)

June 1998

WATERSHED ID	WATERBODY NAME	1996 LIST CAUSES	PARAMETERS REMOVED WITH GOOD	PARAMETERS ADDED		1998 LIST CAUSES	BASIN
			CAUSE (REASONS) IN PARENTHESIS	DHEC	EPA#		
03050101-200	ALLISON CK	FC				FC	Catawba-Santee
03050202-020	ASHLEY RVR	DO, FC, TB	DO(3),FC(5,6),TB(2)		FC	FC	Catawba-Santee
03050202-040	ASHLEY RVR	DO, FC, TB	TB(2)			DO,FC	Catawba-Santee
03050202-070	ASHLEY RVR	FC, TB	FC(10),TB(2)				Catawba-Santee
03050202-060	AWENDAW CK	FC				FC	Catawba-Santee
03050103-042	BEAR CK	DO, FC	DO(3)			FC	Catawba-Santee
03050104-060	BEAR CK	TX, FC	TX(10)			FC	Catawba-Santee
03040206-140	BEAR SWAMP			BIO		BIO	Pee Dee
03050108-040	BEARDS CK	DO, FC				DO,FC	Broad
03050208-100	BEAUFORT RVR	DO		CU		DO,CU	Savannah-Salkehatchie
03040205-030	BEAVERDAM CK			BIO		BIO	Pee Dee
03050101-190	BEAVERDAM CK	FC	FC(5,6)		FC	FC	Catawba-Santee
03050108-010	BEAVERDAM CK	FC				FC	Broad
03050108-030	BEAVERDAM CK			FC		FC	Broad
03060102-150	BEAVERDAM CK			BIO,FC		BIO,FC	Savannah
03060107-030	BEAVERDAM CK	FC				FC	Savannah-Salkehatchie
03050208-090	BEES CK	FC		DO		FC,DO	Savannah-Salkehatchie
03060103-070	BETSY CK	FC	FC(10)				Savannah-Salkehatchie
03050111-030	BIG BRANCH	FC				FC	Catawba-Santee
03050109-060	BIG BRUSHY CK	FC	FC(5)		FC	FC	Saluda-Edisto
03050106-090	BIG CEDAR CK			FC		FC	Broad
03050108-010	BIG DURBIN CK	FC	FC (SEE DURBIN CK)				Broad
03060101-030	BIG EASTATOE CK	FC	FC(10)	ZN		ZN	Savannah-Salkehatchie
03060103-030	BIG GENEROSTEE CK	DO, FC	DO(10),FC(5)	BIO	FC	BIO,FC	Savannah-Salkehatchie
03050104-070	BIG PINE TREE CK	FC	FC(6)		FC	FC	Catawba-Santee
03050111-010	BIG POPLAR CK			DO		DO	Santee
03040202-130	BIG SWAMP	FC				FC	Pee Dee
03050104-020	BIG WATEREE CK	FC				FC	Catawba-Santee
03040201-110	BLACK CK	FC, TB	TB(2)			FC	Pee Dee
03040205-010	BLACK RVR	FC				FC	Pee Dee
03040205-150	BLACK RVR	TX, TB	TB(2),TX(10)				Pee Dee
03060103-150	BLUE HILL CK	FC				FC	Savannah-Salkehatchie
03050205-070	BOHICKET CK	DO, TB	TB(2)			DO	Saluda-Edisto
03050109-120	BOYD MILLPOND	NT(P)				P	Saluda-Edisto
03040205-090	BRIAR BR			BIO		BIO	Pee Dee
03050208-110	BROAD CREEK	FC	FC-SEE S/H USE	DO		DO	Savannah-Salkehatchie
03050109-090	BROAD MOUTH CK	DO, FC, TB	DO(3),TB(2)			FC	Saluda-Edisto
03050105-094	BROAD RVR	TX, FC				FC,CU,CR,ZN	Broad
03050106-010	BROAD RVR	FC	FC(5)		FC	FC	Broad
03050106-060	BROAD RVR	FC	FC(10)	PEST		PEST	Broad
03050106-060	BROAD RVR DIVERSION CANAL			CU		CU	Broad
03060103-070	BROADWAY CK	FC		BIO		FC,BIO	Savannah-Salkehatchie

CR Chromium
 CU Copper
 DO Dissolved Oxygen
 FC Fecal Coliform Bacteria
 PH Hydrogen Ion Concentration

NT Nutrients
 BIO Macroinvertebrate
 SED Contaminated Sediments

PEST Pesticides
 P Phosphorous
 TX Toxics
 ZN Zinc
 TIS Contaminated Tissue

RECONCILIATION WORKSHEET 303(D) LIST
(1996 TO 1998)

June 1998

WATERSHED ID	WATERBODY NAME	1996 LIST CAUSES	PARAMETERS REMOVED WITH GOOD	PARAMETERS ADDED		1998 LIST CAUSES	BASIN
			CAUSE (REASONS) IN PARENTHESIS	DHEC	EPA#		
03060103-070	BROADWAY LAKE	TB	TB(10)				Savannah-Salkehatchie
03050101-190	BROWN CK	FC				FC	Catawba-Santee
03040204-070	BROWN SWAMP	FC	FC(5)			FC	Pee Dee
03050108-010	BRUSHY CK	FC				FC	Broad
03050109-100	BRUSHY CK	FC				FC	Saluda-Edisto
03040204-050	BUCK SWAMP	DO, FC	FC(5)		FC	DO,FC	Pee Dee
03050207-090	BUCKHEAD CK			FC		FC	Salkehatchie
03050105-109	BUFFALO CK	FC		CU		FC, CU	Broad
03050203-050	BULL SWAMP CK	DO, FC, TB	DO(3),TB(2)			FC	Saluda-Edisto
03050105-142	BULLOCKS CK	FC				FC	Broad
03050109-150	BUSH RVR	FC, NT	NT(2)			FC	Saluda-Edisto
03050101-200	CALABASH BRANCH	FC	FC(6)		FC	FC	Catawba-Santee
03050103-080	CAMP CK	FC				FC	Catawba-Santee
03050109-190	CAMPING CK	FC				FC	Saluda-Edisto
03050103-042	CANE CK	DO, FC	DO(3,7)			FC	Catawba-Santee
03060101-050	CANE CK			FC		FC	Savannah
03050105-094	CANOE CK	DO, FC	DO(2),FC(5,6)		FC	FC	Broad
03050103-010	CATAWBA RVR	DO				DO	Catawba-Santee
03050103-010	CATAWBA RVR TRIB	TX, FC	TX(7),FC(5)		FC	FC	Catawba-Santee
03040201-150	CATFISH CANAL	FC	FC(10)				Pee Dee
03050205-020	CATTLE CK	FC				FC	Saluda-Edisto
03050203-070	CAW CAW SWAMP	FC				FC	Saluda-Edisto
03050110-050	CEDAR CK	FC, TB	FC(10),TB(2)				Saluda-Edisto
03050103-010	CEDAR CREEK RESERVOIR	NT(P)				P	Catawba-Santee
03060102-060	CHATTOOGA RVR	FC	FC(10)				Savannah-Salkehatchie
03050208-090	CHECHESSEE RVR	DO	DO(10)				Savannah-Salkehatchie
03050105-110	CHEROKEE CK	FC	FC(5,6,7)		FC	FC	Broad
03060103-070	CHEROKEE CK	FC				FC	Savannah-Salkehatchie
03050208-030	CHESSEY CK			BIO		BIO	Salkehatchie
03050106-040	CHESTER STATE LAKE	TB	TB(2)				Broad
03050203-010	CHINQUAPIN CK	TX, FC	TX(4),FC(5,6)		FC	FC	Saluda-Edisto
03060102-130	CHOESTOEAL CK			FC		FC	Savannah
03050202-040	CHURCH CK	FC	FC(5)		FC	FC	Catawba-Santee
03050105-142	CLARK FORK			FC		FC	Broad
03060103-100	CLARKS HILL LK -LITTLE RVR FK	NT	NT(10)				Savannah-Salkehatchie
03050109-180	CLOUDS CK	FC	FC(10)				Saluda-Edisto
03050208-010	COMBAHEE RVR			DO		DO	Salkehatchie
03060101-080	CONEROSS CK	FC				FC	Savannah-Salkehatchie
03050110-020	CONGAREE CK	TX, FC, TB	TX(4),TB(2)			FC	Saluda-Edisto
03050110-010	CONGAREE RVR	FC				FC	Saluda-Edisto
03050201-050	COOPER RVR	FC	FC(5,6)		FC	FC	Catawba-Santee
03050208-100	COOSAW RVR	DO	DO(3)	ZN		ZN	Savannah-Salkehatchie

CR Chromium
 CU Copper
 DO Dissolved Oxygen
 FC Fecal Coliform Bacteria
 PH Hydrogen Ion Concentration

NT Nutrients
 BIO Macroinvertebrate
 SED Contaminated Sediments

PEST Pesticides
 P Phosphorous
 TX Toxics
 ZN Zinc
 TIS Contaminated Tissue

RECONCILIATION WORKSHEET 303(D) LIST
(1996 TO 1998)

June 1998

WATERSHED ID	WATERBODY NAME	1996 LIST CAUSES	PARAMETERS REMOVED WITH GOOD CAUSE (REASONS) IN PARENTHESIS	PARAMETERS ADDED		1998 LIST CAUSES	BASIN
				DHEC	EPA#		
03050208-050	COOSAWHATCHIE RVR			DO,FC		DO,FC	Salkehatchie
03050208-070	COOSAWHATCHIE RVR	TX, DO, TB, TSS	TX(4),DO(5),TB(2),TSS(2)		DO	DO	Savannah-Salkehatchie
03050208-090	COOSAWHATCHIE RVR	FC	FC(10)				Savannah-Salkehatchie
03050109-140	CORONACA CK	DO				DO	Saluda-Edisto
03040202-090	COUSAR BRANCH	FC				FC	Pee Dee
03050206-030	COW CASTLE CK	FC	FC(5,6)		FC	FC	Saluda-Edisto
03040206-120	CRABTREE CK	FC				FC,DO	Pee Dee
03050106-060	CRANE CK	FC	FC(5)	CU,ZN,BIO	FC	CU,ZN,BIO,FC	Broad
03050101-180	CROWDERS CK	TX, FC	TX(1),FC(1)				Catawba-Santee
03050101-190	CROWDERS CK	TX, FC	TX(10)			FC	Catawba-Santee
03060107-010	CUFFYTOWN CK			FC		FC	Savannah
03060103-070	CUPBOARD CK	DO, TB, FC	DO(7),TB(2),FC(7)		FC	FC	Savannah-Salkehatchie
03040202-130	CYPRESS BR			BIO		BIO	Pee Dee
03050208-080	CYPRESS CK			FC		FC	Salkehatchie
03060109-050	CYPRESS CK			DO		DO	Savannah
03050202-010	CYPRESS SWAMP	TX				ZN	Catawba-Santee
03050206-060	DEAN SWAMP	FC				FC	Saluda-Edisto
03050111-010	DIVERSION CANAL	TX				CU	Catawba-Santee
03050105-094	DOOLITTLE CK	FC				FC	Broad
03050202-030	DORCHESTER CK	DO, FC				DO,FC	Catawba-Santee
03060103-150	DOUBLE BR			BIO		BIO	Savannah
03050106-040	DRY FORK CK	FC		SED		FC,SED	Broad
03050201-010	DUCK POND CK			FC,DO,PH		FC,DO,PH	Santee
03050108-043	DUNCAN CK	FC	FC(5)		FC	FC	Broad
03050108-010	DURBIN CK	FC				FC	Broad
03050202-030	EAGLE CK	FC				FC	Catawba-Santee
03050205-030	EDISTO RVR	FC, TB	TB(2)			FC	Saluda-Edisto
03050205-050	EDISTO RVR	FC, TB	FC(8),TB(2)				Saluda-Edisto
03050205-060	EDISTO RVR	FC, TB	TB(2),FC(10)				Saluda-Edisto
03060101-090	EIGHTEEN MILE CK	FC				FC	Savannah-Salkehatchie
03050202-050	ELLIOTT CUT	FC	(SEE 'MOUTH OF' ON 98 LIST)			FC	Catawba-Santee
03050108-010	ENOREE RVR	FC		ZN,CU,BIO		FC,ZN,CU,BIO	Broad
03050108-020	ENOREE RVR	FC				FC	Broad
03050108-050	ENOREE RVR	FC	FC(5)		FC	FC	Broad
03050108-010	ENOREE RVR TRIB	TX, FC	FC(11),TX(4)				Broad
03050107-060	FAIRFOREST CK	FC		ZN,BIO		FC,ZN,BIO	Broad
03050107-060	FAIRFOREST CK TRIB	FC	(SEE 'TRIB TO' ON 98 LISIT)	CR,ZN,CU		FC,CR,ZN,CU	Broad
03050201-050	FILBIN CK	DO, FC	DO(10)			FC	Catawba-Santee
03050204-010	FIRST BRANCH	FC, NT	NT(2) (SEE UNNAMED CK ON 98 LIST)			FC	Saluda-Edisto
03050103-050	FISHING CK	FC				FC	Catawba-Santee
03050103-060	FISHING CK	FC				FC	Catawba-Santee
03050103-010	FISHING CREEK RESERVOIR	NT(P)				P	Catawba-Santee

CR Chromium
 CU Copper
 DO Dissolved Oxygen
 FC Fecal Colifom Bacteria
 PH Hydrogen Ion Concentration

NT Nutrients
 BIO Macroinvertebrate
 SED Contaminated Sediments

PEST Pesticides
 P Phosphorous
 TX Toxics
 ZN Zinc
 TIS Contaminated Tissue

RECONCILIATION WORKSHEET 303(D) LIST
(1996 TO 1998)

June 1998

WATERSHED ID	WATERBODY NAME	1996 LIST CAUSES	PARAMETERS REMOVED WITH GOOD CAUSE (REASONS) IN PARENTHESIS	PARAMETERS ADDED		1998 LIST CAUSES	BASIN
				DHEC	EPA#		
03040202-040	FLAT CK	FC				FC	Pee Dee
03040202-050	FORK CK	TX, FC, TB	TX(5),TB(2)	BIO	CU	FC,BIO,CU	Pee Dee
03050201-060	FOSTER CK	DO, FC	DO(3)			FC	Catawba-Santee
03050206-010	FOUR HOLE SWAMP	TX, FC, TB	TX(4),TB(2)			FC	Saluda-Edisto
03050208-030	FULLER SWAMP CK			BIO		BIO	Salkehatchie
03050105-094	FURNACE CK	FC				FC	Broad
03050109-050	GEORGES CK	FC	FC(5)		FC	FC	Saluda-Edisto
03050109-050	GEORGES CK TRIB	FC, TB	FC(5),TB(2)		FC	FC	Saluda-Edisto
03050108-010	GILDERS CK	FC				FC	Broad
03050105-130	GILKEY CK			FC		FC	Broad
03050103-042	GILLS CK	FC				FC	Catawba-Santee
03050110-030	GILLS CK	TX, FC, TB	TX(4),TB(2)			FC	Saluda-Edisto
03060101-070	GOLDEN CK	FC	FC(5)	BIO	FC	BIO,FC	Savannah-Salkehatchie
03050201-070	GOOSE CK	DO, PH, FC, TX	TX(10)			DO,PH,FC	Catawba-Santee
03050201-070	GOOSE CK RESERVOIR	DO				DO	Catawba-Santee
03050206-010	GRAMLING CK	DO, FC, TB	DO(3),FC(5),TB(2)		FC	FC	Saluda-Edisto
03050103-090	GRASSY RUN BRANCH	DO, FC				DO,FC	Catawba-Santee
03050208-120	GREAT SWAMP			FC		FC	Salkehatchie
03040205-080	GREEN SWAMP	FC, TB	FC(10),TB(2)				Pee Dee
03050109-040	GROVE CK	FC	FC(5)		FC	FC	Saluda-Edisto
03040201-130	GULLEY BR	TX, FC	TX(6)		CU	FC,CU	Pee Dee
03050105-094	GUYONMOORE CK			FC		FC	Broad
03040201-090	HAGINS PRONG	FC	FC(10)				Pee Dee
03040202-070	HAILE GOLD MINE CK	PH, TX		BIO		PH,BIO,CU,ZN	Pee Dee
03050111-020	HALFWAY SWAMP CK	FC, TB	TB(2)			FC	Catawba-Santee
03040202-070	HANGING ROCK CK				FC	FC	Pee Dee
03040202-070	HANGING ROCK CK TRIB (LICK CK)	FC, TB	TB(2)			FC	Pee Dee
03060107-010	HARD LABOR CK	DO, FC	DO(10),FC(5)	BIO,CU	FC	BIO,CU,FC	Savannah-Salkehatchie
03040202-020	HILLS CK	FC	FC(5)		FC	FC	Pee Dee
03050109-200	HOLLOW CK	FC				FC	Saluda-Edisto
03060106-050	HORSE CK	TB, TX	TB(2)	FC		FC,CU	Savannah-Salkehatchie
03050108-010	HORSE PEN CK	FC	FC(12)				Broad
03050206-055	HORSE RANGE SWAMP	FC				FC	Saluda-Edisto
03050208-030	HORSESHOE CK			FC		FC	Salkehatchie
03040202-070	HORTON CK	FC	FC(5)		FC	FC	Pee Dee
03050109-110	HUFF CK	FC	FC(5,6)		FC	FC	Saluda-Edisto
03040206-140	ICWW	DO, PH, FC		ZN		DO,PH,FC,ZN	Pee Dee
03040207-030	ICWW	DO, PH, TX, FC,TB	TB(2),PH(13),TX(13)			DO,FC	Pee Dee
03050208-020	IRELAND CK	DO, FC	DO(3)			FC	Savannah-Salkehatchie
03050105-130	IRENE CK	FC				FC	Broad
03050111-030	JACKS CK	FC				FC	Catawba-Santee
03050106-080	JACKSON CK			CR,CU,BIO		CR,CU,BIO	Broad

CR Chromium
 CU Copper
 DO Dissolved Oxygen
 FC Fecal Colifom Bacteria
 PH Hydrogen Ion Concentration

NT Nutrients
 BIO Macroinvertebrate
 SED Contaminated Sediments

PEST Pesticides
 P Phosphorous
 TX Toxics
 ZN Zinc
 TIS Contaminated Tissue

RECONCILIATION WORKSHEET 303(D) LIST
(1996 TO 1998)

June 1998

WATERSHED ID	WATERBODY NAME	1996 LIST CAUSES	PARAMETERS REMOVED WITH GOOD CAUSE (REASONS) IN PARENTHESIS	PARAMETERS ADDED		1998 LIST CAUSES	BASIN
				DHEC	EPA#		
03040201-130	JEFFERIES CK			BIO		BIO	Pee Dee
03050202-060	JEREMY CK	FC				FC	Catawba-Santee
03050107-050	JIMMIES CK	FC				FC	Broad
03060103-150	JOHNS CK			BIO		BIO	Savannah
03050107-060	KELSEY CK	FC				FC	Broad
03050105-122	KINGS CK			FC		FC	Broad
03040206-120	KINGSTON LAKE	FC	FC(5)	DO	FC	DO,FC	Pee Dee
03050109-210	KINLEY CK	FC	FC(5)		FC	FC	Saluda-Edisto
03050110-020	LAKE CAROLINE	FC, TB	TB(2)			FC	Saluda-Edisto
03050109-080	LAKE GREENWOOD-REEDY RV FK	NT(P)	(SEE 'REEDY FORK' ON 98 LIST)			P	Saluda-Edisto
03050111-020	LAKE INSPIRATION	DO, FC	FC(10)			DO	Catawba-Santee
03050111-050	LAKE MARION	TX, TB(P)				ZN,P	Catawba-Santee
03050111-020	LAKE MARION -HALFWAY SWAMP	TB	TB(10)				Catawba-Santee
03050109-150	LAKE MURRAY -BUSH RVR FORK	TB(P)				P	Saluda-Edisto
03050109-190	LAKE MURRAY @ MARKER 63			P		P	Saluda
03050103-060	LAKE OLIPHANT			P		P	Catawba
03060103-070	LAKE SECESSION -HEADWATERS	NT(P)				P	Savannah-Salkehatchie
03050208-060	LAKE WARREN	DO, TB, NT	TB(2),NT(10)			DO	Savannah-Salkehatchie
03050101-190	LAKE WYLIE	TX	(16)			CU	Catawba-Santee
03050109-100	LANGSTON CK	TX, FC	FC(5,6)		FC	CR,FC	Saluda-Edisto
03050105-180	LAWSONS FORK CK	FC		BIO		FC,BIO	Broad
03050207-070	LEMON CK			FC		FC	Salkehatchie
03050108-010	LICK CK			FC		FC	Broad
03050203-010	LIGHTWOOD KNOT CK	FC				FC	Saluda-Edisto
03050105-130	LIMESTONE CK	FC				FC	Broad
03050105-170	LITTLE BUCK CK	FC	FC(5)		FC	FC	Broad
03050206-010	LITTLE BULL CK	FC, TB	TB(2)			FC	Saluda-Edisto
03060101-050	LITTLE CANE CK			FC		FC	Savannah
03060101-030	LITTLE EASTATOE CK			FC		FC	Savannah
03040202-050	LITTLE FORK CK	PH, TX, TB	TX(6,10),TB(2)	BIO		PH,BIO	Pee Dee
03040202-070	LITTLE LYNCHES RVR	FC	FC(5)		FC	FC	Pee Dee
03040202-080	LITTLE LYNCHES RVR	FC				FC	Pee Dee
03040204-030	LITTLE PEE DEE			ZN,CU		ZN,CU	Pee Dee
03040204-060	LITTLE PEE DEE RVR	TX				CU,ZN	Pee Dee
03050104-070	LITTLE PINE TREE CK	FC, TB	TB(2)			FC	Catawba-Santee
03040207-030	LITTLE RVR	PH, TX, FC	TX(10)			PH,FC	Pee Dee
03050106-070	LITTLE RVR	FC				FC	Broad
03050109-160	LITTLE RVR	FC				FC	Saluda-Edisto
03050109-163	LITTLE RVR	FC, TB	TB(2)			FC	Saluda-Edisto
03060103-140	LITTLE RVR			FC		FC	Savannah
03050207-060	LITTLE SALKEHATCHIE RVR			FC		FC	Salkehatchie
03050207-080	LITTLE SALKEHATCHIE RVR			FC		FC	Salkehatchie

CR Chromium
 CU Copper
 DO Dissolved Oxygen
 FC Fecal Colifom Bacteria
 PH Hydrogen Ion Concentration

NT Nutrients
 BIO Macroinvertebrate
 SED Contaminated Sediments

PEST Pesticides
 P Phosphorous
 TX Toxics
 ZN Zinc
 TIS Contaminated Tissue

RECONCILIATION WORKSHEET 303(D) LIST
(1996 TO 1998)

June 1998

WATERSHED ID	WATERBODY NAME	1996 LIST CAUSES	PARAMETERS REMOVED WITH GOOD	PARAMETERS ADDED		1998 LIST CAUSES	BASIN
			CAUSE (REASONS) IN PARENTHESIS	DHEC	EPA#		
03050207-110	LITTLE SALKEHATCHIE RVR			FC		FC	Salkehatchie
03050109-170	LITTLE SALUDA RVR	DO, FC	DO(3)			FC	Saluda-Edisto
03050103-028	LITTLE SUGAR CK	FC	FC(1)				Catawba-Santee
03050104-010	LITTLE WATEREE CK	FC				FC	Catawba-Santee
03050207-020	LK EDGAR BROWN IN FOREBAY			PH,P		PH,P	Salkehatchie
03050109-120	LK GREENWOOD, REEDY R ARM			P		P	Saluda
03060103-020	LK HARTWELL, MAIN BODY			CU		CU	Savannah
03060101-040	LK HARTWELL, SENECA RVR ARM			CU		CU	Savannah
03060101-020	LK JOCASSEE			CU,ZN		CU,ZN	Savannah
03060101-030	LK KEOWEE			CU		CU	Savannah
03060101-050	LK KEOWEE			ZN		ZN	Savannah
03050111-040	LK MARION, MID OF TAWCAW E			P		P	Santee
03050201-010	LK MOULTRIE TRIB			FC		FC	Santee
03050202-050	LOG BRIDGE CK	FC				FC	Catawba-Santee
03050105-142	LONG BRANCH CK	FC	FC(10)				Broad
03060103-150	LONG CANE CK			FC		FC	Savannah
03050109-210	LORICK BRANCH	FC	FC(6)		FC	FC	Saluda-Edisto
03060106-130	LOWER THREE RUNS CK			CU		CU	Savannah
03040202-150	LYNCHES LAKE	FC, TB	FC(10),TB(2)				Pee Dee
03040202-030	LYNCHES RVR	TX, FC	FC(5)		FC	CU,FC	Pee Dee
03040202-060	LYNCHES RVR	TX, FC, TB	TX(4),FC(10),TB(2)				Pee Dee
03040202-090	LYNCHES RVR	TX, TB	TB(2)			CU	Pee Dee
03040204-038	MAPLE SWAMP	FC, TB	TB(2)			FC	Pee Dee
03050103-028	MCALPINE CK	BIO, DO, FC, NT	DO(10),FC(5,1),NT(2)		FC	BIO,FC	Catawba-Santee
03050112-050	MECHAW CK	FC				FC	Catawba-Santee
03050106-030	MENG CK	FC				FC	Broad
03050106-030	MENG CK TRIB	FC				FC	Broad
03050109-020	MIDDLE SALUDA RVR	FC				FC	Saluda-Edisto
03040201-130	MIDDLE SWAMP	FC				FC	Pee Dee
03050107-040	MIDDLE TYGER RVR	FC				FC	Broad
03050106-080	MILL CK			FC		FC	Broad
03050108-010	MILL CK	FC	FC(15)				Broad
03050109-040	MILL CK	TX, FC			CR	FC,ZN,CR	Saluda-Edisto
03050110-010	MILL CK	DO, FC, TB	DO(3),TB(2),FC(10)				Saluda-Edisto
03050107-060	MITCHELL CK	FC				FC	Broad
03050108-010	MOUNTAIN CK	FC				FC	Broad
03050107-010	MUSH CK			FC		FC	Broad
03040202-030	N BRANCH WILDCAT CK	FC	FC(5)		FC	FC	Pee Dee
03060101-060	N FORK TWELVE MILE CK	FC				FC	Savannah-Salkehatchie
03050105-155	N PACOLET RVR	FC	FC(5,6)		FC	FC	Broad
03050109-010	N SALUDA RVR	FC, TB	FC(5),TB(2)		FC	FC	Saluda-Edisto
03050112-060	N SANTEE RVR	DO	DO(10)				Catawba-Santee

CR Chromium
 CU Copper
 DO Dissolved Oxygen
 FC Fecal Coliform Bacteria
 PH Hydrogen Ion Concentration

NT Nutrients
 BIO Macroinvertebrate
 SED Contaminated Sediments

PEST Pesticides
 P Phosphorous
 TX Toxics
 ZN Zinc
 TIS Contaminated Tissue

RECONCILIATION WORKSHEET 303(D) LIST
(1996 TO 1998)

June 1998

WATERSHED ID	WATERBODY NAME	1996 LIST CAUSES	PARAMETERS REMOVED WITH GOOD CAUSE (REASONS) IN PARENTHESIS	PARAMETERS ADDED		1998 LIST CAUSES	BASIN
				DHEC	EPA#		
03050107-020	N TYGER RVR	FC		ZN		FC,ZN	Broad
03050107-030	N TYGER RVR			FC		FC	Broad
03050107-020	N TYGER RVR TRIB	FC	(SEE 'TRIB TO' ON 98 LIST)			FC	Broad
03040205-080	NASTY BRANCH	FC, TB	FC(10),TB(2)	DO,PH		DO,PH	Pee Dee
03050208-130	NEW RVR	DO, FC	DO(3)			FC	Savannah-Salkehatchie
03040202-100	NEWMAN SWAMP	FC, TB	TB(2)			FC	Pee Dee
03050109-140	NINETY SIX CK	FC	FC(5,6)		FC	FC	Saluda-Edisto
03060102-130	NORRIS CK	FC				FC	Savannah-Salkehatchie
03050109-160	NORTH CK	FC				FC	Saluda-Edisto
03050208-090	OAKATIE RVR	FC	FC-SEE S/H USE				Savannah-Salkehatchie
03040205-140	OX SWAMP			BIO		BIO	Pee Dee
03050105-170	PACOLET RVR	FC	FC(5)		FC	FC	Broad
03050105-190	PACOLET RVR	FC				FC	Broad
03050105-155	PAGE CK	FC				FC	Broad
03040204-015	PANTHER CK	FC	FC(10)				Pee Dee
03040201-120	PEE DEE RVR	TX				CR,CU	Pee Dee
03040201-140	PEE DEE RVR	TX, TB	TB(2)			CU	Pee Dee
03050105-094	PEOPLES CK	FC				FC	Broad
03040201-110	PIPE	DO, FC, TB	TB(2) (SEE TILE ON 98 LIST)			DO,FC	Pee Dee
03040205-090	POCOTALIGO RVR	TX, TB	TX(10),TB(2)				Pee Dee
03050208-090	POCOTALIGO RVR	DO, FC	DO(10)			FC	Savannah-Salkehatchie
03050205-040	POLK SWAMP	FC				FC	Saluda-Edisto
03050105-170	POTTER BRANCH	FC	FC(5)		FC	FC	Broad
03040201-110	PRESTWOOD LAKE	FC, TB	TB(2),FC(10)				Pee Dee
03050108-010	PRINCESS CK	PH, FC		ZN		PH,FC,ZN	Broad
03050206-050	PROVIDENCE SWAMP	TX, FC	TX(4)			FC	Saluda-Edisto
03050109-130	RABON CK	FC				FC	Saluda-Edisto
03050109-210	RAWLS CK	FC				FC	Saluda-Edisto
03050109-120	REEDY RIVER FORK) LK GW	NT(P)				P	Saluda-Edisto
03050109-100	REEDY RVR	DO,TX,FC,TSS,TB	TB(2),TSS(2),DO(10)			FC,CR	Saluda-Edisto
03050109-120	REEDY RVR			BIO		BIO	Saluda
03050208-010	REMICK SWAMP			BIO		BIO	Salkehatchie
03050204-070	ROBERTS SWAMP	FC				FC	Saluda-Edisto
03050103-090	ROCKY CK	FC				FC	Catawba-Santee
03050108-010	ROCKY CK	FC				FC	Broad
03050109-100	ROCKY CK	FC				FC	Saluda-Edisto
03060107-010	ROCKY CK			BIO		BIO	Savannah
03060103-070	ROCKY RVR	FC		CU,BIO		FC,CU,BIO	Savannah-Salkehatchie
03050106-020	ROSS BRANCH	FC				FC	Broad
03050103-042	RUM CK	DO, TX, FC				FC,CR,DO	Catawba-Santee
03050101-190	S FORK CROWDERS CK	FC				FC	Catawba-Santee
03050204-010	S FORK EDISTO RVR	FC, TB	FC(10),TB(2)				Saluda-Edisto

CR Chromium
 CU Copper
 DO Dissolved Oxygen
 FC Fecal Coliform Bacteria
 PH Hydrogen Ion Concentration

NT Nutrients
 BIO Macroinvertebrate
 SED Contaminated Sediments

PEST Pesticides
 P Phosphorous
 TX Toxics
 ZN Zinc
 TIS Contaminated Tissue

RECONCILIATION WORKSHEET 303(D) LIST
(1996 TO 1998)

June 1998

WATERSHED ID	WATERBODY NAME	1996 LIST CAUSES	PARAMETERS REMOVED WITH GOOD	PARAMETERS ADDED		1998 LIST CAUSES	BASIN
			CAUSE (REASONS) IN PARENTHESIS	DHEC	EPA#		
03050105-160	S PACOLET RVR	FC				FC	Broad
03050109-020	S SALUDA RVR	FC				FC	Saluda-Edisto
03050112-060	S SANTEE RVR	PH, TX	PH(14),TX(14)				Catawba-Santee
03050107-010	S TYGER RVR	FC	FC(5,6)	BIO	FC	BIO,FC	Broad
03050207-010	SALKEHATCHIE RVR			CU		CU	Salkehatchie
03050207-030	SALKEHATCHIE RVR	FC			CU	FC,CU	Savannah-Salkehatchie
03050207-040	SALKEHATCHIE RVR	DO, TB, FC	DO(10),TB(2)			FC	Savannah-Salkehatchie
03050109-040	SALUDA RVR	FC, TB	TB(2)			FC	Saluda-Edisto
03050109-080	SALUDA RVR	TX, TB	TB(2)			PEST	Saluda-Edisto
03050109-150	SALUDA RVR	DO	DO(10)				Saluda-Edisto
03050109-210	SALUDA RVR	DO, TX, FC	TX(4),FC(6)		FC	DO,FC	Saluda-Edisto
03050109-040	SALUDA RVR TRIB	PH, FC, TB,TX,DO	PH(2),TB(2),TX(4)		CR	FC,DO,CR	Saluda-Edisto
03040207-040	SAMPIT RVR	DO, TB	DO(3),TB(2)				Pee Dee
03060106-050	SAND RVR	FC				FC	Savannah-Salkehatchie
03050208-070	SANDERS BRANCH	DO, FC	DO(5)	BIO	DO	FC,BIO,DO	Savannah-Salkehatchie
03050106-040	SANDY RVR	FC	FC(5)		FC	FC	Broad
03050112-010	SANTEE RVR	DO	DO(10)				Catawba-Santee
03050112-030	SANTEE RVR	FC	FC(10)				Catawba-Santee
03050110-020	SAVANA BRANCH	FC, TB	FC(6),TB(2)		FC	FC	Saluda-Edisto
03060106-030	SAVANNAH RVR	FC	FC(10)				Savannah-Salkehatchie
03060106-060	SAVANNAH RVR	FC				FC	Savannah-Salkehatchie
03060106-140	SAVANNAH RVR			ZN		ZN	Savannah
03060109-060	SAVANNAH RVR	DO, TB, FC	DO(10),TB(2),FC(5)		FC	FC	Savannah-Salkehatchie
03050202-030	SAWMILL BRANCH	DO, FC				DO,FC	Catawba-Santee
03060103-140	SAWNEY CK	FC	FC(5)		FC	FC	Savannah-Salkehatchie
03050104-050	SAWNEYS CK	FC				FC	Catawba-Santee
03040205-030	SCAPE ORE SWAMP	FC				FC	Pee Dee
03050109-150	SCOTT CK	FC				FC	Saluda-Edisto
03050202-070	SHEM CK	DO, FC, TB	DO(3),TB(2)			FC	Catawba-Santee
03050201-050	SHIPYARD CK	TX		SED, TIS		SED, TIS	Catawba-Santee
03060101-040	SIX & TWENTY CK	FC				FC	Savannah-Salkehatchie
03060101-040	SIX MILE CK			FC		FC	Savannah
03050103-038	SIXMILE CK	FC, NT	NT(2)			FC	Catawba-Santee
03050110-020	SIXMILE CREEK	DO, TB	DO(10),TB(2)				Saluda-Edisto
03040201-100	SKIPPER CK			BIO		BIO	Pee Dee
03050208-110	SKULL CK (MOUTH OF)	DO				DO	Savannah-Salkehatchie
03050106-060	SMITH BRANCH	FC		BIO		FC,BIO	Broad
03040201-150	SMITH SWAMP	DO, TX, FC, NT	FC(5),NT(2)		FC	DO,CU,FC	Pee Dee
03040201-110	SNAKE BRANCH	DO, FC				FC,PH,DO	Pee Dee
03050104-090	SPEARS CK	FC				FC	Catawba-Santee
03050105-160	SPIVEY CK	FC				FC	Broad
03050111-010	SPRING GROVE CK			FC		FC	Santee

CR Chromium
 CU Copper
 DO Dissolved Oxygen
 FC Fecal Coliform Bacteria
 PH Hydrogen Ion Concentration

NT Nutrients
 BIO Macroinvertebrate
 SED Contaminated Sediments

PEST Pesticides
 P Phosphorous
 TX Toxics
 ZN Zinc
 TIS Contaminated Tissue

RECONCILIATION WORKSHEET 303(D) LIST
(1996 TO 1998)

June 1998

WATERSHED ID	WATERBODY NAME	1996 LIST CAUSES	PARAMETERS REMOVED WITH GOOD	PARAMETERS ADDED		1998 LIST CAUSES	BASIN
			CAUSE (REASONS) IN PARENTHESIS	DHEC	EPA#		
03050103-028	STEELE CK	DO, FC	DO(3)			FC	Catawba-Santee
03050202-070	STONO RVR	DO, TX	DO(3)			CU	Catawba-Santee
03050111-010	STREAM FROM NEW SED POND			PH		PH	Santee
03050103-028	SUGAR CK	BIO, TX, FC, NT	FC(5,1),NT(2)		FC	BIO,ZN,FC	Catawba-Santee
03050111-040	TAWCAW CK	DO, FC	DO(3)			FC	Catawba-Santee
03050105-130	THICKETTY CK	FC				FC	Broad
03040201-062	THOMPSON CK	FC				FC	Pee Dee
03060101-100	THREE & TWENTY CK	FC	FC(5)	BIO	FC	BIO,FC	Savannah-Salkehatchie
03060106-100	TIMS BRANCH	FC				FC	Savannah-Salkehatchie
03050107-060	TINKER CK	FC				FC	Broad
03050103-070	TINKERS CK	FC				FC	Catawba-Santee
03040202-070	TODDS BRANCH	FC				FC	Pee Dee
03050103-060	TOOLS FORK	FC				FC	Catawba-Santee
03050107-060	TOSCHS CK	FC				FC	Broad
03050201-050	TOWN CK, COOPER RVR	FC, TB	FC(5,6),TB(2)		FC	FC	Catawba-Santee
03050109-090	TRIB TO BROAD MOUTH CK			BIO		BIO	Saluda
03050105-142	TRIB TO CRAWFORD LAKE	FC	FC-SEE CLARKS FORK				Broad
03050111-020	TRIB TO HALFWAY SWAMP	FC	SEE 'UNNAMED' ON 98 LIST			FC	Catawba-Santee
03040205-080	TURKEY CK	FC				FC	Pee Dee
03040207-040	TURKEY CK	FC, TB	TB(2)			FC	Pee Dee
03050207-020	TURKEY CK	DO, NT, TB, FC	DO(10),NT(2),TB(2),FC(5)		FC	FC	Savannah-Salkehatchie
03060101-060	TWELVE MILE CK	FC	FC(10)				Savannah-Salkehatchie
03060101-070	TWELVE MILE CK	FC	FC(5)		FC	FC	Savannah-Salkehatchie
03050103-038	TWELVEMILE CK	FC				FC	Catawba-Santee
03050109-210	TWELVEMILE CK	TX, FC	TX(4),FC(5)		FC	FC	Saluda-Edisto
03050104-060	TWENTYFIVE MILE CK	FC	FC(5)		FC	FC	Catawba-Santee
03050107-030	TYGER RVR	FC	FC-SEE N TYGER RVR				Broad
03050107-050	TYGER RVR	FC				FC	Broad
03060101-070	UNNAMED CR ON MAW BRIDGE			FC		FC	Savannah
03060106-100	UPPER TREE RUNS CK			FC		FC	Savannah
03040206-140	WACCAMAW RVR	DO				DO	Pee Dee
03050201-020	WADBOO SWAMP	FC	FC(5)		FC	FC	Catawba-Santee
03050201-020	WALKER SWAMP	FC, TB	FC(5),TB(2)		FC	FC	Catawba-Santee
03050201-080	WANDO RVR	TX				CU	Catawba-Santee
03050108-030	WARRIOR CK			FC		FC	Broad
03050202-010	WASSAMASSAW SWAMP	FC, TB	TB(2)			FC	Catawba-Santee
03050104-010	WATEREE LAKE	TX, TB	TB(2)	P,SED		P,SED,CU	Catawba-Santee
03050104-030	WATEREE RVR	DO, TX, TB	TX(4),TB(2)			DO	Catawba-Santee
03050103-038	WAXHAW CK	FC	FC(5)		FC	FC	Catawba-Santee
03050207-050	WHIPPY SWAMP			FC		FC	Salkehatchie
03040207-040	WHITES CK	DO, TB	DO(3),TB(2)				Pee Dee
03050103-060	WILDCAT CK	FC				FC	Catawba-Santee

CR Chromium
 CU Copper
 DO Dissolved Oxygen
 FC Fecal Coliform Bacteria
 PH Hydrogen Ion Concentration

NT Nutrients
 BIO Macroinvertebrate
 SED Contaminated Sediments

PEST Pesticides
 P Phosphorous
 TX Toxics
 ZN Zinc
 TIS Contaminated Tissue

RECONCILIATION WORKSHEET 303(D) LIST
(1996 TO 1998)

June 1998

WATERSHED ID	WATERBODY NAME	1996 LIST CAUSES	PARAMETERS REMOVED WITH GOOD	PARAMETERS ADDED		1998 LIST CAUSES	BASIN
			CAUSE (REASONS) IN PARENTHESIS	DHEC	EPA#		
03040201-130	WILLOW CK			BIO,DO,PH		BIO,DO,PH	Pee Dee
03050207-100	WILLOW SWAMP			FC		FC	Salkehatchie
03050109-140	WILSON CK	FC				FC	Saluda-Edisto
03060103-080	WILSON CK			BIO		BIO	Savannah
03050106-080	WINNSBORO BRANCH	FC				FC	Broad
03040207-050	WINYAH BAY	TX, TB	TB(2)			ZN	Pee Dee
03060101-090	WOODSIDE BRANCH	DO, FC	DO(10)			FC	Savannah-Salkehatchie

CR Chromium
 CU Copper
 DO Dissolved Oxygen
 FC Fecal Colifom Bacteria
 PH Hydrogen Ion Concentration

NT Nutrients
 BIO Macroinvertebrate
 SED Contaminated Sediments

PEST Pesticides
 P Phosphorous
 TX Toxics
 ZN Zinc
 TIS Contaminated Tissue

RECONCILIATION OF SHELLFISH WATERS ON 1996 305(B) REPORT AND 1998 303(D) LIST
(AS LISTED IN ATTACHMENT C OF EPA'S COMMENTS TO SC'S 1998 303(D) LIST)

WATERBODY NAME	POLLUTANT OF CONCERN	ON 1998 303(d) LIST?	EXPLANATION
Cherry Grove	fecal coliform	yes	renamed Little River Estuary/Hog Inlet
Whitepoint Swash	fecal coliform	no	prohibited area (administrative closure)
Singleton Swash	fecal coliform	no	prohibited area (administrative closure)
Canepatch Swash	fecal coliform	no	prohibited area (administrative closure)
Withers Swash	fecal coliform	no	prohibited area (administrative closure)
Midway Swash	fecal coliform	no	prohibited area (administrative closure)
Mud Creek & Cutoff Creek	fecal coliform	yes	renamed North Inlet Estuary
Sandy Point Creek	fecal coliform	yes	renamed AIWW Jeremy Ck & Venning Ck
Shem Creek (2 segments)	fecal coliform	no	prohibited area (administrative closure)
Russell Creek	fecal coliform	no	prohibited area (administrative closure)
Tom Point Creek	fecal coliform	no	meets standards
Bohicket Creek	fecal coliform	portions are listed	portions meet standards; are prohibited area; or listed as Church Ck
Ashepoo Creek	fecal coliform	no	meets standards
Whale Branch	fecal coliform	no	meets standards
Jenkins Creek	fecal coliform	no	meets standards
Village Creek	fecal coliform	no	meets standards
Fripp Island Canal	fecal coliform	no	prohibited area (administrative closure)
Hazzard Creek	fecal coliform	no	actually a storm ditch - taken out of inventory
Broad Creek	fecal coliform	yes	see Priority One - Shellfish Harvesting Use on 1998 303(d) List