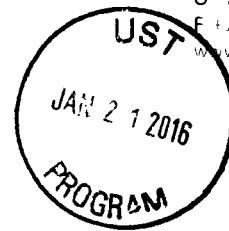




CH2M Raleigh
 5110 Highwoods Boulevard
 Suite 200
 Raleigh, NC 27604
 O - 919 875 4500
 F - 919 875 8400
 www.ch2m.com



January 19, 2016

Delivered via FedEx

Ms. Bobbi Coleman
 South Carolina Department of Health and Environmental Control
 Assessment Section, UST Management Division
 Bureau of Land and Waste Management
 2600 Bull Street
 Columbia, SC 29201

Subject: Lewis Drive Release – Monthly Status Update
 Plantation Pipe Line Company
 Belton, South Carolina
 Site ID #18693, "Kinder Morgan Belton Pipeline Release"

Dear Ms. Coleman,

On behalf of Plantation Pipe Line Company, CH2M is submitting the attached Monthly Status Report covering December 2015 for the Lewis Drive site. If you have any questions or concerns, please call me at 919-760-1777, Mr. Scott Powell/CH2M at 678-530-4457, or Mr. Jerry Aycock/Plantation at 770-751-4165.

Regards,
 CH2M HILL Engineers, Inc.

William M. Waldron, P.E.
 Senior Project Manager

Enclosures

- Bi-weekly Report including:
 - Figure 1 – Groundwater Elevation Map
 - Figure 2 – Product Thickness Map
 - Table 1 – Well Construction Information
 - Table 2 – Groundwater Elevation and Product Thickness Data

Cc (via e-mail):

Jerry Aycock, Plantation, Jerry_Aycock@kindermorgan.com
 Mary Clair Lyons, Esq., Plantation, Mary_Lyons@kindermorgan.com
 Richard Morton, Esq., Womble Carlyle Sandridge & Rice, PLLC, rmorton@wcsr.com
 File

Monthly Report

Plantation Pipe Line Company

Lewis Drive Release

Site ID #18693 “Kinder Morgan Belton Pipeline Release”

December 2015

Activities since Last Report

- Responded to comments received from SCDHEC dated November 19, 2015 with additional information regarding the *Additional Site Assessment Activities Plan* submitted on October 30, 2015.
- Completed installing 3 bedrock monitoring wells and initiated construction of 2 additional bedrock and 2 residuum monitoring wells as part of Additional Site Assessment activities.
- Evacuated product/water from Trench RT-2 installed adjacent to Brown’s Creek and groundwater from recovery sumps on a twice per week (usually Mon/Fri) schedule. Transferred product/water to a 21,000-gallon frac tank for on-site oil/water separation and delivery off-site to the locations indicated on the table below. Recovered 604 gallons of product since the last report (dated 12/07/2015). Since February 2015, product recovery efforts have been focused on the trenches and recovery sumps and select wells that have contained the highest product levels. Recovered **209,036 gallons** (4,977 barrels) of product through the end of December 2015.
- Gauged depth to product and depth to water in recovery sumps, trenches, temporary wells, and recovery wells on a routine basis. During the monthly site-wide gauging event on December 4, 2015, 17 wells and sumps had product thicknesses of 0.5 foot or greater. The greatest product thickness was 4.01 feet in MW-18.
- Due to excessive rainfall in November and December (over 10 inches in *each* month), groundwater elevations rose and product thicknesses were depressed.
- Inspected Brown’s Creek and Wetland #1 (Cupboard Creek) south of W Calhoun Road for sheen, odor, or distressed vegetation. None observed.
- To date, 17 rounds of surface water samples have been analyzed for benzene, toluene, ethylbenzene, xylenes, and naphthalene.
 - Benzene, toluene, and xylenes were detected in surface water samples SW-01, SW-02, SW-04, SW-08 and SW-09 collected on 12/22/2015. Benzene levels exceeded South Carolina’s applicable surface water standard for benzene of 2.2 µg/L at SW-01 (4.6 µg/L), SW-02 (4.1 µg/L), and SW-04 (3.3 µg/L).
 - Prior to the November round of sampling, no hydrocarbon constituents had been detected in surface water samples since 5/19/2015.
- Conducted air monitoring with MiniRAE 3000 photo-ionization detector in vicinity of site activities.
- Conducted weekly internal storm water pollution prevention plan (SWPPP) inspections on December 16, 21, and 28 during active drilling operations.
- Collected PID readings from 5 interim soil vapor monitoring points to screen for soil vapors on a routine basis. Readings in the 5 soil vapor monitoring points have been less than 12 ppm since August 14, 2015.
- Issued monthly report to SCDHEC.

Future Activities

- Complete the remaining 4 additional residuum monitoring wells (6 total) and 2 additional bedrock monitoring wells (5 total) as additional site assessment activities to delineate the dissolved plume.
- Develop new wells.
- Conduct a second site-wide groundwater monitoring event.
- Evacuate product from product recovery sumps, trenches, and select wells routinely.
- Gauge product recovery sumps, trenches, and wells routinely. Gauge 1-inch piezometers monthly.
- Continue to dispose recovered liquids offsite.
- Continue routine visual inspections of Brown’s Creek and Wetland #1 (Cupboard Creek).
- Conduct monthly sampling of surface water at 11 pre-determined locations along Brown’s Creek and Cupboard Creek.
- Start development of Corrective Action Plan and Basis of Design Report.
- Continue coordination with landowners and legal counsel on an as-needed basis.

- Continue monthly reporting to SCDHEC.

Wildlife Issues

- None.

Cumulative Product Shipped

Date	Destination	Total Product (gal)
12/9/2014	PPL Greensboro	4,289
12/9/2014	PPL Greensboro	3,100
12/12/2014	PPL Greensboro	1,189
12/30/2014	Crystal Clean (FCC)	5,057
12/31/2014	Crystal Clean (FCC)	5,333
1/4/2015	Crystal Clean (FCC)	5,000
1/4/2015	Crystal Clean (FCC)	2,872
1/5/2015	Crystal Clean (FCC)	5,013
1/6/2015	Crystal Clean (FCC)	4,800
1/7/2015	Allied Energies	6,532
1/7/2015	Allied Energies	6,425
1/7/2015	Allied Energies	8,200
1/9/2015	Allied Energies	6,482
1/9/2015	Allied Energies	7,825
1/12/2015	Allied Energies	6,540
1/12/2015	Allied Energies	6,467
1/13/2015	Allied Energies	6,732
1/13/2015	Allied Energies	6,595
1/15/2015	Allied Energies	6,500
1/22/2015	Allied Energies	5,791
1/23/2015	Allied Energies	5,450
1/27/2015	Allied Energies	5,791
1/27/2015	Allied Energies	5,557
1/27/2015	Allied Energies	6,043
1/28/2015	Allied Energies	4,411
2/5/2015	Allied Energies	5,513
2/11/2015	Allied Energies	5,732
2/11/2015	Allied Energies	5,606
2/25/2015	Allied Energies	5,583
3/4/2015	Allied Energies	4,000
3/16/2015	Allied Energies	5,200
6/3/2015	Allied Energies	6,500
6/3/2015	Allied Energies	4,214
8/10/2015	Allied Energies	6,000
11/2/2015	Allied Energies	5,800
11/13/2015	Crystal Clean (FCC)	2,900
12/1/2015	Allied Energies	6,690
12/1/2015	Allied Energies	6,700
12/7/2015	Crystal Clean (FCC)	500
12/28/2015	To be determined	104
	Total (gallons)	209,036
	Total (barrels)	4,977

Access Agreements

- The property transfer between the previous owners of 112 Lewis Drive and Plantation has been completed.
- Mr. Scott Lewis gave verbal approval to conduct needed response activities on his property. A formal access agreement has been submitted to Mr. Scott & Eric Lewis for consideration, but to date has not been formally executed.

Local Authorities On-Site

- None.



LEGEND

- ★ Release Point
- ◆ Soil Vapor Monitoring Point
- Piezometer ("R" indicates Replacement)
- Abandoned Temporary Piezometer
- Recovery Well (4" diameter)
- Recovery Trench Point
- Monitoring Well
- Bedrock Monitoring Well
- Monitoring Well to be installed December 2015 - January 2016
- Bedrock Monitoring Well to be installed December 2015 - January 2016
- ▲ Recovery Sump
- ▲ Abandoned Recovery Sump
- Septic Tank
- Surface Water Flow Direction
- Recovery Trench
- Soft Boom
- Hard Boom
- Pipeline
- Backwater Location
- Stream (NHD)
- ▨ Beaver Dam
- ▨ Delineated Wetland
- Detail Area

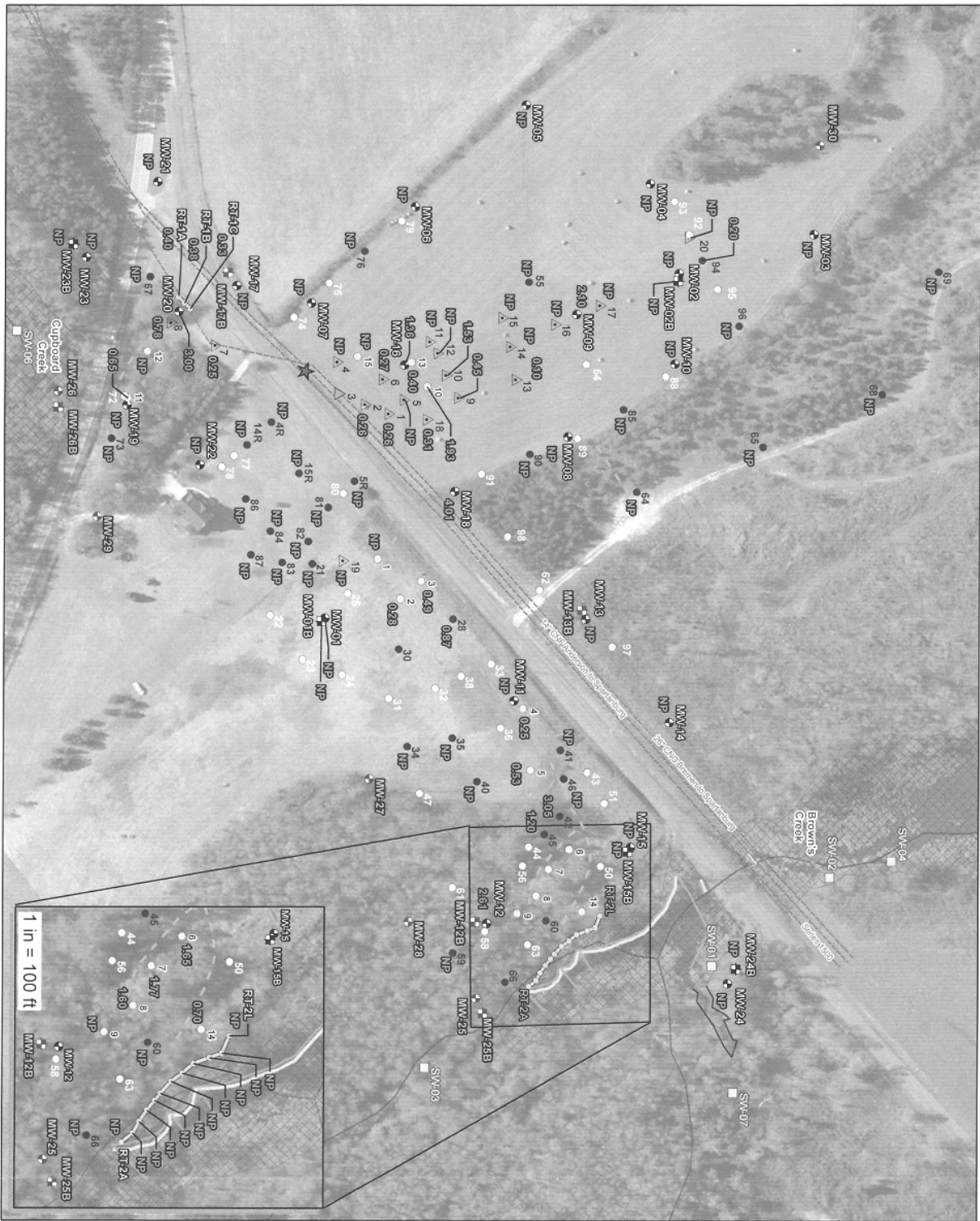
Corrected Groundwater Elevation as of 12/04/2015 in feet above mean sea level

BASE MAP SOURCE:
 ESRI World Imagery, 2013
 USGS National Hydrography Dataset (NHD)

Scale: 1 in = 100 ft

0 100 200 300

FIGURE 1. GROUNDWATER ELEVATION MAP
 Lewis Drive Release, Belton, South Carolina
 Site ID #18693 "Kinder Morgan Belton Pipeline Release"



LEGEND

- ★ Release Point
- Piezometer ("R" indicates Replacement)
- Abandoned Temporary Piezometer
- Recovery Well (4" diameter)
- Recovery Trench Point
- △ Recovery Sump
- △ Abandoned Recovery Sump
- Monitoring Well
- Bedrock Monitoring Well
- Monitoring Well to be installed December 2015 - January 2016
- Bedrock Monitoring Well to be installed December 2015 - January 2016
- Pipeline
- Recovery Trench
- Stream (NHD)
- Delineated Wetland
- Detail Area
- 0.57' Product Thickness in feet as of 12/04/2015
- NP No Product detected

BASE MAP SOURCE:
 ESRI World Imagery, 2013
 USGS National Hydrography Dataset (NHD)

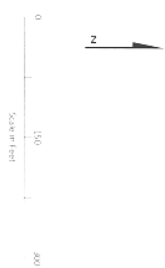


FIGURE 2. PRODUCT THICKNESS MAP,
 December 4, 2015
 Lewis Drive Release, Belton, South Carolina
 Site ID #18693 "Kinder Morgan Belton Pipeline Release"

Table 1. Well Construction Information
 Plantation Pipe Line Company
 Lewis Drive Release, Belton, South Carolina
 Site ID #18693 "Kinder Morgan Belton Pipeline Release"

Location ID	Installation Method	Permit #	Date Installed	Date Abandoned	Purpose	Ground Surface Elevation (ft amsl)	TOC Elevation (ft amsl)	Measured Depth to Bottom (ft BTOC)	Bore Hole Diameter (in)	Well Dia (in)	Well Depth (ft bgs)	Bottom of Well (ft amsl)	Top of Screen (ft BTOC)	Bottom of Screen (ft BTOC)	Top of Screen (ft bgs)	Bottom of Screen (ft bgs)	Top of Screen (ft amsl)	Bottom of Screen (ft amsl)	Screened Length (ft)
Monitoring Wells																			
MW-01	CME 550 HSA	MW-10136	6/26/2015	Still in use	Monitoring Well/Gauging	850.25	853.07	15.65	8	2	13.00	837.2	5.82	15.82	3.0	13.0	847.2	837.2	10.00
MW-01B	Schramm Air Rig	MW-10136	6/25/2015	Still in use	Monitoring Well/Gauging	850.45	852.99	44.50	10	6	38.50	812.0	NA	NA	NA	NA	NA	NA	NA
MW-02	CME 750 HSA	MW-10136	6/25/2015	Still in use	Monitoring Well/Gauging	841.24	841.04	23.14	8	2	20.00	821.2	4.80	19.80	5.0	20.0	836.2	821.2	15.00
MW-02B	Schramm Air Rig	MW-10136	6/24/2015	Still in use	Monitoring Well/Gauging	841.40	841.18	87.15	10	6	81.00	760.4	NA	NA	NA	NA	NA	NA	NA
MW-03	CME 550 HSA	MW-10136	6/23/2015	Still in use	Monitoring Well/Gauging	838.38	838.36	22.19	8	2	20.00	818.4	4.98	19.98	5.0	20.0	833.4	818.4	15.00
MW-04	CME 550 HSA	MW-10136	6/23/2015	Still in use	Monitoring Well/Gauging	844.51	844.42	22.13	8	2	20.00	824.5	4.91	19.91	5.0	20.0	839.5	824.5	15.00
MW-05	CME 550 HSA	MW-10136	6/24/2015	Still in use	Monitoring Well/Gauging	851.15	851.11	21.78	8	2	20.00	831.1	4.96	19.96	5.0	20.0	846.1	831.1	15.00
MW-06	CME 550 HSA	MW-10136	6/24/2015	Still in use	Monitoring Well/Gauging	852.98	852.92	21.84	8	2	19.60	833.4	4.54	19.54	5.0	19.6	848.0	833.4	15.00
MW-07	CME 550 HSA	MW-10136	6/25/2015	Still in use	Monitoring Well/Gauging	853.02	853.02	15.35	8	2	13.50	839.5	-1.50	13.50	3.5	13.5	849.5	839.5	15.00
MW-08	CME 550 HSA	MW-10136	6/25/2015	Still in use	Monitoring Well/Gauging	844.75	844.72	21.81	8	2	19.70	825.1	4.67	19.67	4.7	19.7	840.1	825.1	15.00
MW-09	CME 550 HSA	MW-10136	6/25/2015	Still in use	Monitoring Well/Gauging	843.72	843.63	22.63	8	2	19.50	824.2	4.41	19.41	4.5	19.5	839.2	824.2	15.00
MW-10	CME 550 HSA	MW-10136	6/25/2015	Still in use	Monitoring Well/Gauging	842.33	845.41	22.41	8	2	20.00	822.3	8.08	23.08	5.0	20.0	837.3	822.3	15.00
MW-11	CME 550 HSA	MW-10136	7/1/2015	Still in use	Monitoring Well/Gauging	852.36	855.63	31.32	8	2	25.20	827.2	13.27	28.27	14.2	25.0	838.2	827.4	15.00
MW-12	CME 550 HSA	MW-10136	6/25/2015	Still in use	Monitoring Well/Gauging	832.20	834.53	22.05	8	2	19.30	812.9	6.63	21.63	4.3	19.3	827.9	812.9	15.00
MW-13	CME 550 HSA	MW-10136	6/26/2015	Still in use	Monitoring Well/Gauging	845.93	848.84	21.15	8	2	19.00	826.9	6.92	21.92	4.0	19.0	841.9	826.9	15.00
MW-14	CME 550 HSA	MW-10136	6/26/2015	Still in use	Monitoring Well/Gauging	836.47	838.70	21.85	8	2	19.30	817.2	6.53	21.53	4.3	19.3	832.2	817.2	15.00
MW-15	CME 550 HSA	MW-10136	6/29/2015	Still in use	Monitoring Well/Gauging	828.68	831.03	18.85	8	2	19.00	809.7	6.35	21.35	4.0	19.0	824.7	809.7	15.00
MW-15B	CME 550 HSA	MW-10136	7/28/2015	Still in use	Monitoring Well/Gauging	828.66	831.29	77.85	10	6	77.85	750.8	NA	NA	NA	NA	NA	NA	NA
MW-16	CME 750 HSA	MW-10136	6/26/2015	Still in use	Monitoring Well/Gauging	847.63	847.67	25.30	8	2	20.00	827.6	5.03	20.03	5.0	20.0	842.6	827.6	15.00
MW-17	CME 750 HSA	MW-10136	6/29/2015	Still in use	Monitoring Well/Gauging	855.32	855.35	15.30	8	2	11.00	844.3	6.03	11.03	6.0	11.0	849.3	844.3	5.00
MW-18	CME 550 HSA	MW-10136	6/29/2015	Still in use	Monitoring Well/Gauging	846.82	846.89	21.85	8	2	20.00	826.8	5.06	20.06	5.0	20.0	841.8	826.8	15.00
MW-19	CME 750 HSA	MW-10136	6/29/2015	Still in use	Monitoring Well/Gauging	851.23	853.94	12.13	8	2	9.50	841.7	7.20	12.20	4.5	9.5	846.7	841.7	5.00
MW-20	CME 750 HSA	MW-10136	6/30/2015	Still in use	Monitoring Well/Gauging	853.07	852.89	22.25	8	2	19.00	834.1	3.81	18.81	4.0	19.0	849.1	834.1	15.00
MW-21	CME 750 HSA	MW-10136	6/30/2015	Still in use	Monitoring Well/Gauging	855.68	855.77	23.23	8	2	20.00	835.7	5.09	20.09	5.0	20.0	850.7	835.7	15.00
MW-22	CME 750 HSA	MW-10136	7/1/2015	Still in use	Monitoring Well/Gauging	854.62	854.60	13.41	8	2	11.00	843.6	5.98	10.98	6.0	11.0	848.6	843.6	5.00
MW-23	CME 750 HSA	MW-10136	7/1/2015	Still in use	Monitoring Well/Gauging	846.66	849.57	23.24	8	2	20.00	826.7	7.91	22.91	5.0	20.0	841.7	826.7	15.00
MW-23B	CME 550 HSA	MW-10136	7/22/2015	Still in use	Monitoring Well/Gauging	846.81	849.69	55.75	10	6	50.50	796.3	NA	NA	NA	NA	NA	NA	NA
MW-24	CME 550 HSA	MW-10136	7/15/2015	Still in use	Monitoring Well/Gauging	815.72	817.92	12.50	8	2	13.00	802.7	10.20	15.20	8.0	13.0	807.7	802.7	5.00
MW-24B	CME 550 HSA	MW-10136	7/20/2015	Still in use	Monitoring Well/Gauging	815.83	818.72	41.35	10	6	39.50	776.3	NA	NA	NA	NA	NA	NA	NA
Recovery Wells																			
RW-01	HSA	MW-09978	1/28/2015	Still in use	Gauging/LNAPL Recovery	849.49	851.92	19.75	6.25	4	17	832.5	4.44	19.44	2.0	17.0	847.5	832.5	15
RW-02	HSA	MW-09978	1/29/2015	Still in use	Gauging/LNAPL Recovery	850.22	852.69	25.25	6.25	4	23	827.2	15.47	25.47	13.0	23.0	837.2	827.2	10
RW-03	HSA	MW-09978	1/29/2015	Still in use	Gauging/LNAPL Recovery	850.03	852.34	33.39	6.25	4	31.2	818.8	18.51	33.51	16.2	31.2	833.8	818.8	15
RW-04	HSA	MW-09978	1/29/2015	Still in use	Gauging/LNAPL Recovery	852.15	853.93	34.04	6.25	4	33	819.2	14.78	34.78	13.0	33.0	839.2	819.2	20
RW-05	HSA	MW-09978	1/30/2015	Still in use	Gauging/LNAPL Recovery	850.99	853.53	34.50	6.25	4	34.5	816.5	22.04	37.04	19.5	34.5	831.5	816.5	15
RW-06	HSA	MW-09978	1/30/2015	Still in use	Gauging/LNAPL Recovery	844.21	846.21	38.50	6.25	4	38.5	805.7	20.49	40.49	18.5	38.5	825.7	805.7	20
RW-07	HSA	MW-09978	2/2/2015	Still in use	Gauging/LNAPL Recovery	841.01	843.19	38.00	6.25	4	38	803.0	15.18	40.18	13.0	38.0	828.0	803.0	25
RW-08	HSA	MW-09978	2/2/2015	Still in use	Gauging/LNAPL Recovery	833.46	835.48	33.50	6.25	4	33.5	800.0	10.52	35.52	8.5	33.5	825.0	800.0	25
RW-09	HSA	MW-09978	2/3/2015	Still in use	Gauging/LNAPL Recovery	831.13	835.12	42.13	6.25	4	41.5	789.6	15.49	45.49	11.5	41.5	819.6	789.6	30
RW-10	HSA	MW-10006	2/4/2015	Still in use	Gauging/LNAPL Recovery	846.76	848.53	66.51	6.25	4	68.5	778.3	5.27	70.27	3.5	68.5	843.3	778.3	65
RW-11	HSA	MW-10006	2/4/2015	Still in use	Gauging/LNAPL Recovery	851.03	852.97	17.92	6.25	4	19.5	831.5	6.44	21.44	4.5	19.5	846.5	831.5	15
RW-12	HSA	MW-10006	2/5/2015	Still in use	Gauging/LNAPL Recovery	851.48	852.75	14.00	6.25	4	14	837.5	4.00	14.00	4.0	14.0	847.5	837.5	10
RW-13	HSA	MW-10006	2/5/2015	Still in use	Gauging/LNAPL Recovery	847.57	847.97	45.53	6.25	4	50	797.6	0.53	45.53	5.0	50.0	842.6	797.6	45
RW-14	HSA	MW-10006	2/6/2015	Still in use	Gauging/LNAPL Recovery	826.25	827.54	55.00	6.25	4	55	771.2	5.00	55.00	5.0	55.0	821.2	771.2	50
RW-15	HSA	MW-10006	2/10/2015	Still in use	Gauging/LNAPL Recovery	849.48	851.64	36.50	6.25	4	36.5	813.0	1.50	36.50	1.5	36.5	848.0	813.0	35

Table 1. Well Construction Information
 Plantation Pipe Line Company
 Lewis Drive Release, Belton, South Carolina
 Site ID #18693 "Kinder Morgan Belton Pipeline Release"

Location ID	Installation Method	Permit #	Date Installed	Date Abandoned	Purpose	Ground Surface Elevation (ft amsl)	TOC (ft amsl)	Measured		Well Depth (ft bgs)	Bottom of Well (ft amsl)	Top of Screen (ft BTOC)	Bottom of Screen (ft BTOC)	Top of Screen (ft bgs)	Bottom of Screen (ft bgs)	Top of Screen (ft amsl)	Bottom of Screen (ft amsl)	Screened Length (ft)	
								Depth to Bottom (ft BTOC)	Bore Hole Diameter (in)										
Recovery Sumps																			
RS-01	Trackhoe	MW-09978	12/29/2014	Still in use	Gauging/LNAPL Recovery	847.95	850.33	23.60	NA	4	21.21	826.7	4.39	23.60	2.0	21.2	845.9	826.7	19.21
RS-02	Trackhoe	MW-09978	12/29/2014	Still in use	Gauging/LNAPL Recovery	848.62	850.38	20.21	NA	4	18.45	830.2	3.76	20.21	2.0	18.4	846.6	830.2	16.45
RS-04	Trackhoe	MW-09978	12/30/2014	Still in use	Gauging/LNAPL Recovery	850.23	851.65	10.25	NA	4	8.83	841.4	3.42	10.25	2.0	8.8	848.2	841.4	6.83
RS-05	Trackhoe	MW-09978	12/31/2014	Still in use	Gauging/LNAPL Recovery	847.14	848.55	25.20	NA	4	23.79	823.3	3.41	25.20	2.0	23.8	845.1	823.3	21.79
RS-06	Trackhoe	MW-09978	12/31/2014	Still in use	Gauging/LNAPL Recovery	847.87	850.97	25.18	NA	4	22.09	825.8	5.09	25.18	2.0	22.1	845.9	825.8	20.09
RS-07	Trackhoe	MW-09978	12/31/2014	Still in use	Gauging/LNAPL Recovery	854.20	856.29	16.78	NA	4	14.69	839.5	4.09	16.78	2.0	14.7	852.2	839.5	12.69
RS-08	Trackhoe	MW-09978	12/31/2014	Still in use	Gauging/LNAPL Recovery	852.70	855.19	20.22	NA	4	17.72	835.0	4.50	20.22	2.0	17.7	850.7	835.0	15.72
RS-09	Trackhoe	MW-09978	1/7/2015	Still in use	Gauging/LNAPL Recovery	846.75	849.12	18.69	NA	4	16.33	830.4	4.37	18.69	2.0	16.3	844.8	830.4	14.33
RS-10	Trackhoe	MW-09978	1/7/2015	Still in use	Gauging/LNAPL Recovery	846.28	847.52	20.06	NA	4	18.82	827.5	3.24	20.06	2.0	18.8	844.3	827.5	16.82
RS-11	Trackhoe	MW-09978	1/7/2015	Still in use	Gauging/LNAPL Recovery	846.35	848.41	22.06	NA	4	19.99	826.4	4.07	22.06	2.0	20.0	844.3	826.4	17.99
RS-12	Trackhoe	MW-09978	1/7/2015	Still in use	Gauging/LNAPL Recovery	846.58	848.87	21.29	NA	4	19.00	827.6	4.29	21.29	2.0	19.0	844.6	827.6	17.00
RS-13	Trackhoe	MW-09978	1/8/2015	Still in use	Gauging/LNAPL Recovery	845.51	848.28	19.92	NA	4	17.14	828.4	4.15	19.92	1.4	17.1	844.1	828.4	15.77
RS-14	Trackhoe	MW-09978	1/8/2015	Still in use	Gauging/LNAPL Recovery	844.66	846.92	19.93	NA	4	17.68	827.0	4.26	19.93	2.0	17.7	842.7	827.0	15.68
RS-15	Trackhoe	MW-09978	1/8/2015	Still in use	Gauging/LNAPL Recovery	845.36	848.97	19.93	NA	4	16.31	829.0	5.62	19.93	2.0	16.3	843.4	829.0	14.31
RS-16	Trackhoe	MW-09978	1/8/2015	Still in use	Gauging/LNAPL Recovery	844.56	846.77	19.98	NA	4	17.77	826.8	4.21	19.98	2.0	17.8	842.6	826.8	15.77
RS-17	Trackhoe	MW-09978	1/8/2015	Still in use	Gauging/LNAPL Recovery	843.29	845.15	19.91	NA	4	18.05	825.2	3.86	19.91	2.0	18.0	841.3	825.2	16.05
RS-18	Trackhoe	MW-09978	1/8/2015	Still in use	Gauging/LNAPL Recovery	846.82	848.59	19.98	NA	4	18.21	828.6	3.77	19.98	2.0	18.2	844.8	828.6	16.21
RS-19	Trackhoe	MW-09978	1/21/2015	Still in use	Gauging/LNAPL Recovery	849.27	852.37	15.10	NA	4	12.00	837.3	5.10	15.10	2.0	12.0	847.3	837.3	10.00
RS-20	Trackhoe	MW-09978	3/19/2015	Still in use	Gauging/LNAPL Recovery	849.58	851.99	11.84	NA	4	9.91	839.7	3.93	11.84	2.0	9.9	847.6	839.7	7.91
Recovery Trench Sumps																			
RT-1A	Trackhoe	MW-09978	1/6/2015	Still in use	Gauging/LNAPL Recovery	852.86	856.21	20.80	NA	4	20.00	832.9	5.35	23.35	2.0	20.0	850.9	832.9	18
RT-1B	Trackhoe	MW-09978	1/6/2015	Still in use	Gauging/LNAPL Recovery	853.29	857.30	20.69	NA	4	20.00	833.3	6.00	24.00	2.0	20.0	851.3	833.3	18
RT-1C	Trackhoe	MW-09978	1/6/2015	Still in use	Gauging/LNAPL Recovery	853.55	857.02	20.20	NA	4	20.00	833.5	5.47	23.47	2.0	20.0	851.5	833.5	18
RT-2A	Trackhoe	MW-09978	1/22/2015	Still in use	Gauging/LNAPL Recovery	815.66	818.31	10.81	NA	4	10.00	805.7	4.66	12.66	2.0	10.0	813.7	805.7	8
RT-2B	Trackhoe	MW-09978	1/22/2015	Still in use	Gauging/LNAPL Recovery	816.72	818.92	10.82	NA	4	10.00	806.7	4.20	12.20	2.0	10.0	814.7	806.7	8
RT-2C	Trackhoe	MW-09978	1/22/2015	Still in use	Gauging/LNAPL Recovery	816.86	819.02	10.23	NA	4	10.00	806.9	4.15	12.15	2.0	10.0	814.9	806.9	8
RT-2D	Trackhoe	MW-09978	1/22/2015	Still in use	Gauging/LNAPL Recovery	817.46	819.59	10.21	NA	4	10.00	807.5	4.13	12.13	2.0	10.0	815.5	807.5	8
RT-2E	Trackhoe	MW-09978	1/22/2015	Still in use	Gauging/LNAPL Recovery	817.32	819.40	10.24	NA	4	10.00	807.3	4.08	12.08	2.0	10.0	815.3	807.3	8
RT-2F	Trackhoe	MW-09978	1/22/2015	Still in use	Gauging/LNAPL Recovery	817.74	819.52	10.23	NA	4	10.00	807.7	3.78	11.78	2.0	10.0	815.7	807.7	8
RT-2G	Trackhoe	MW-09978	1/22/2015	Still in use	Gauging/LNAPL Recovery	819.27	820.31	10.24	NA	4	10.00	809.3	3.04	11.04	2.0	10.0	817.3	809.3	8
RT-2H	Trackhoe	MW-09978	1/22/2015	Still in use	Gauging/LNAPL Recovery	819.91	822.17	8.35	NA	4	10.00	809.9	3.90	12.25	1.7	10.0	818.3	809.9	8
RT-2I	Trackhoe	MW-09978	1/22/2015	Still in use	Gauging/LNAPL Recovery	819.12	819.80	10.20	NA	4	10.00	809.1	2.67	10.67	2.0	10.0	817.1	809.1	8
RT-2J	Trackhoe	MW-09978	1/22/2015	Still in use	Gauging/LNAPL Recovery	817.47	818.38	10.22	NA	4	10.00	807.5	2.91	10.91	2.0	10.0	815.5	807.5	8
RT-2K	Trackhoe	MW-09978	3/20/2015	Still in use	Gauging/LNAPL Recovery	816.11	817.46	4.14	NA	4	2.50	813.6	2.64	4.14	1.0	2.5	815.1	813.6	2
RT-2L	Trackhoe	MW-09978	3/20/2015	Still in use	Gauging/LNAPL Recovery	817.97	820.35	6.60	NA	4	3.71	814.3	3.89	6.60	1.0	3.7	817.0	814.3	3
Piezometers																			
TW-04R	DPT	MW-10006	2/4/2015	Still in use	Gauging	852.71	852.86	5.46	2.2	1	5.5	847.2	2.46	5.46	2.5	5.3	850.2	847.4	3
TW-05R	DPT	MW-10006	2/4/2015	Still in use	Gauging	849.95	850.17	8.87	2.2	1	8.8	841.2	2.87	8.87	2.8	8.7	847.2	841.3	6

Table 1. Well Construction Information
 Plantation Pipe Line Company
 Lewis Drive Release, Belton, South Carolina
 Site ID #18693 "Kinder Morgan Belton Pipeline Release"

Location ID	Installation Method	Permit #	Date Installed	Date Abandoned	Purpose	Ground	Measured		Bore Hole Diameter (in)	Well Dia (in)	Well Depth (ft bgs)	Bottom of Well (ft amsl)	Top of Screen (ft BTOC)	Bottom of Screen (ft BTOC)	Top of Screen (ft bgs)	Bottom of Screen (ft bgs)	Top of Screen (ft amsl)	Bottom of Screen (ft amsl)	Screened Length (ft)
						Surface Elevation (ft amsl)	TOC Elevation (ft amsl)	Depth to Bottom (ft BTOC)											
TW-14R	DPT	MW-10006	2/4/2015	Still in use	Gauging	853.53	853.60	6.20	2.2	1	6.5	847.0	2.20	6.20	2.5	6.1	851.0	847.4	4
TW-15R	DPT	MW-10006	2/4/2015	Still in use	Gauging	850.71	850.73	4.85	2.2	1	5	845.7	1.85	4.85	2.0	4.8	848.7	845.9	3
TW-21	DPT	MW-09978	1/22/2015	Still in use	Gauging	849.82	852.09	12.71	2.2	1	14	835.8	2.71	12.71	4.0	10.4	845.8	839.4	10
TW-28	DPT	MW-09978	1/23/2015	Still in use	Gauging	851.62	853.92	31.84	2.2	1	30	821.6	11.84	31.84	10.0	29.5	841.6	822.1	20
TW-30	DPT	MW-09978	1/23/2015	Still in use	Gauging	852.02	852.96	25.05	2.2	1	24	828.0	10.05	25.05	9.0	24.1	843.0	827.9	15
TW-34	DPT	MW-09978	1/24/2015	Still in use	Gauging	855.13	857.41	25.04	2.2	1	23	832.1	10.04	25.04	8.0	22.8	847.1	832.4	15
TW-35	DPT	MW-09978	1/24/2015	Still in use	Gauging	854.32	856.31	25.12	2.2	1	23	831.3	10.12	25.12	8.0	23.1	846.3	831.2	15
TW-40	DPT	MW-09978	1/24/2015	Still in use	Gauging	853.50	854.56	34.05	2.2	1	33	820.5	14.05	34.05	13.0	33.0	840.5	820.5	20
TW-41	DPT	MW-09978	1/25/2015	Still in use	Gauging	849.10	850.68	33.58	2.2	1	34	815.1	8.58	33.58	9.0	32.0	840.1	817.1	25
TW-42	DPT	MW-09978	1/25/2015	Still in use	Gauging	846.78	848.99	39.80	2.2	1	29.5	817.3	19.80	39.80	9.5	37.6	837.3	809.2	20
TW-45	DPT	MW-09978	1/25/2015	Still in use	Gauging	848.31	850.38	36.86	2.2	1	37.5	810.8	11.86	36.86	12.5	34.8	835.8	813.5	25
TW-46	DPT	MW-09978	1/26/2015	Still in use	Gauging	846.78	848.83	33.44	2.2	1	32	814.8	13.44	33.44	12.0	31.4	834.8	815.4	20
TW-55	DPT	MW-10006	2/5/2015	Still in use	Gauging	845.95	847.25	43.00	2.7	1	43	802.9	13.00	43.00	13.0	41.7	832.9	804.2	30

Table 1. Well Construction Information
 Plantation Pipe Line Company
 Lewis Drive Release, Belton, South Carolina
 Site ID #18693 "Kinder Morgan Belton Pipeline Release"

Location ID	Installation Method	Permit #	Date Installed	Date Abandoned	Purpose	Ground Surface Elevation (ft amsl)	TOC Elevation (ft amsl)	Measured Depth to Bottom (ft BTOC)	Bore Hole Diameter (in)	Well Dia (in)	Well Depth (ft bgs)	Bottom of Well (ft amsl)	Top of Screen (ft BTOC)	Bottom of Screen (ft BTOC)	Top of Screen (ft bgs)	Bottom of Screen (ft bgs)	Top of Screen (ft amsl)	Bottom of Screen (ft amsl)	Screened Length (ft)
TW-59	DPT	MW-09978	1/30/2015	Still in use	Gauging	834.98	836.74	22.00	2.7	1	22	813.0	7.00	22.00	7.0	20.2	828.0	814.7	15
TW-60	DPT	MW-09978	1/30/2015	Still in use	Gauging	828.00	829.84	40.40	2.7	1	41.5	786.5	5.40	40.40	6.5	38.6	821.5	789.4	35
TW-64	DPT	MW-09978	2/2/2015	Still in use	Gauging	846.03	848.06	56.43	2.2	1	55	791.0	6.43	56.43	5.0	54.4	841.0	791.6	50
TW-65	DPT	MW-09978	2/2/2015	Still in use	Gauging	845.78	847.30	44.81	2.2	1	44.5	801.3	9.81	44.81	9.5	43.3	836.3	802.5	35
TW-66	DPT	MW-09978	2/2/2015	Still in use	Gauging	820.25	822.70	29.70	2.7	1	24	796.2	9.70	29.70	4.0	27.2	816.2	793.0	20
TW-67	DPT	MW-09978	2/3/2015	Still in use	Gauging	853.27	855.01	26.31	2.7	1	27	826.3	6.31	26.31	7.0	24.6	846.3	828.7	20
TW-68	DPT	MW-09978	2/3/2015	Still in use	Gauging	846.69	849.73	29.96	2.2	1	27	819.7	9.96	29.96	7.0	26.9	839.7	819.8	20
TW-69	DPT	MW-09978	2/3/2015	Still in use	Gauging	840.41	842.62	51.91	2.2	1	50	790.4	11.91	51.91	10.0	49.7	830.4	790.7	40
TW-70	DPT	MW-09978	2/3/2015	Still in use	Gauging	842.23	844.61	45.05	2.2	1	43	799.2	10.05	45.05	8.0	42.7	834.2	799.6	35
TW-73	DPT	MW-09978	2/3/2015	Still in use	Gauging	850.55	851.94	16.00	2.7	1	16	834.5	6.00	16.00	6.0	14.6	844.5	835.9	10
TW-76	DPT	MW-10006	2/4/2015	Still in use	Gauging	852.48	854.32	43.62	2.7	1	43	809.5	8.62	43.62	8.0	41.8	844.5	810.7	35
TW-81	DPT	MW-10006	2/5/2015	Still in use	Gauging	849.52	849.64	7.00	2.2	1	7	842.5	2.00	7.00	2.0	6.9	847.5	842.6	5
TW-82	DPT	MW-10006	2/5/2015	Still in use	Gauging	849.76	849.93	10.00	2.2	1	10	839.8	2.00	10.00	2.0	9.8	847.8	839.9	8
TW-83	DPT	MW-10006	2/5/2015	Still in use	Gauging	850.66	850.66	17.00	2.2	1	17	833.7	2.00	17.00	2.0	17.0	848.7	833.7	15
TW-84	DPT	MW-10006	2/5/2015	Still in use	Gauging	851.38	851.55	13.50	2.2	1	13.5	837.9	3.50	13.50	3.5	13.3	847.9	838.0	10
TW-85	DPT	MW-10006	2/5/2015	Still in use	Gauging	843.62	845.39	39.00	2.7	1	39	804.6	9.00	39.00	9.0	37.2	834.6	806.4	30
TW-86	DPT	MW-10006	2/5/2015	Still in use	Gauging	853.16	853.31	6.00	2.2	1	6	847.2	2.00	6.00	2.0	5.8	851.2	847.3	4
TW-87	DPT	MW-10006	2/5/2015	Still in use	Gauging	852.38	852.53	7.00	2.2	1	7	845.4	2.00	7.00	2.0	6.9	850.4	845.5	5
TW-90	DPT	MW-10006	2/6/2015	Still in use	Gauging	845.57	847.03	46.50	2.7	1	46.5	799.1	6.50	46.50	6.5	45.0	839.1	800.5	40
TW-94	DPT	MW-10006	2/10/2015	Still in use	Gauging	840.66	840.74	40.00	2.7	1	40	800.7	5.00	40.00	5.0	39.9	835.7	800.7	35
TW-96	DPT	MW-10006	2/11/2015	Still in use	Gauging	840.42	840.81	30.00	2.7	1	30	810.4	5.00	30.00	5.0	29.6	835.4	810.8	25

Notes:

¹ Coordinates provided in South Carolina State Plane Coordinate System, North American Datum of 1983 (NAD83) (2011).

amsl = above mean sea level relative to North American Vertical Datum of 1988 (NAVD88). Benchmark is 34 deg 49'44.27745", 82 deg 22'15.72744" NAD83 (2011), elevation 929.1 ft NAVD88
 bgs = below ground surface
 in = inches
 NA = not applicable
 DPT = direct push
 NS = location not surveyed
 ft = feet
 RNE = Refusal not encountered
 HSA = hollow-stem auger
 TOC = top of casing

Table 2. Groundwater Elevation and Product Thickness Data

Plantation Pipe Line Company

Lewis Drive Release, Belton, South Carolina

Site ID #18693 "Kinder Morgan Belton Pipeline Release"

Location ID	Date	Depth to Product (ft BTOC)	Depth to Water (ft BTOC)	Product Thickness (ft)	Top of Casing Elevation (ft amsl)	Groundwater Elevation (ft amsl)	Corrected ¹ Groundwater Elevation (ft amsl)
MW-01					853.07		
	12/28/2015	-	2.95	-		850.12	-
	12/24/2015	-	2.75	-		850.32	-
	12/21/2015	-	3.95	-		849.12	-
	12/18/2015	-	3.28	-		849.79	-
	12/11/2015	-	5.89	-		847.18	-
	12/7/2015	-	5.30	-		847.77	-
	12/4/2015	-	5.05	-		848.02	-
MW-01B					852.99		
	12/28/2015	-	5.22	-		847.77	-
	12/24/2015	-	5.68	-		847.31	-
	12/21/2015	-	6.00	-		846.99	-
	12/18/2015	-	6.22	-		846.77	-
	12/11/2015	-	5.99	-		847.00	-
	12/7/2015	-	5.76	-		847.23	-
	12/4/2015	-	8.70	-		844.29	-
MW-02					841.04		
	12/28/2015	-	3.28	-		837.76	-
	12/24/2015	-	3.37	-		837.67	-
	12/21/2015	-	3.41	-		837.63	-
	12/18/2015	4.07	4.10	0.03		836.94	836.96
	12/11/2015	-	4.80	-		836.24	-
	12/7/2015	4.10	4.15	0.05		836.89	836.93
	12/4/2015	-	3.80	-		837.24	-
MW-02B					841.18		
	12/28/2015	-	3.95	-		837.23	-
	12/24/2015	-	4.06	-		837.12	-
	12/21/2015	-	4.33	-		836.85	-
	12/18/2015	-	5.03	-		836.15	-
	12/7/2015	-	4.69	-		836.49	-
	12/4/2015	-	4.70	-		836.48	-
MW-03					838.36		
	12/28/2015	-	3.85	-		834.51	-
	12/24/2015	-	4.01	-		834.35	-
	12/21/2015	-	-	-		838.36	-
	12/18/2015	-	4.72	-		833.64	-
	12/11/2015	-	5.59	-		832.77	-
	12/7/2015	-	5.10	-		833.26	-
	12/4/2015	-	4.55	-		833.81	-
MW-04					844.42		
	12/28/2015	-	5.69	-		838.73	-
	12/24/2015	-	5.89	-		838.53	-
	12/21/2015	-	6.25	-		838.17	-
	12/18/2015	-	6.24	-		838.18	-
	12/11/2015	-	7.33	-		837.09	-
	12/7/2015	-	6.90	-		837.52	-
	12/4/2015	-	6.77	-		837.65	-

Table 2. Groundwater Elevation and Product Thickness Data

Plantation Pipe Line Company

Lewis Drive Release, Belton, South Carolina

Site ID #18693 "Kinder Morgan Belton Pipeline Release"

Location ID	Date	Depth to Product (ft BTOC)	Depth to Water (ft BTOC)	Product Thickness (ft)	Top of Casing Elevation (ft amsl)	Groundwater Elevation (ft amsl)	Corrected ¹ Groundwater Elevation (ft amsl)
MW-05					851.11		
	12/28/2015	-	9.79	-		841.32	-
	12/24/2015	-	9.93	-		841.18	-
	12/21/2015	-	10.80	-		840.31	-
	12/18/2015	-	10.68	-		840.43	-
	12/11/2015	-	10.30	-		840.81	-
	12/7/2015	-	10.50	-		840.61	-
	12/4/2015	-	10.43	-		840.68	-
MW-06					852.92		
	12/28/2015	-	10.71	-		842.21	-
	12/24/2015	-	10.78	-		842.14	-
	12/21/2015	-	11.02	-		841.90	-
	12/18/2015	-	11.17	-		841.75	-
	12/11/2015	-	11.30	-		841.62	-
	12/7/2015	-	11.37	-		841.55	-
	12/4/2015	-	11.72	-		841.20	-
MW-07					853.02		
	12/28/2015	-	10.00	-		843.02	-
	12/24/2015	-	10.06	-		842.96	-
	12/21/2015	-	10.40	-		842.62	-
	12/18/2015	-	10.67	-		842.35	-
	12/11/2015	-	10.75	-		842.27	-
	12/7/2015	-	10.75	-		842.27	-
	12/4/2015	-	16.88	-		836.14	-
MW-08					844.72		
	12/28/2015	-	4.98	-		839.74	-
	12/24/2015	-	5.09	-		839.63	-
	12/21/2015	-	5.23	-		839.49	-
	12/18/2015	-	4.23	-		840.49	-
	12/11/2015	-	9.25	-		835.47	-
	12/7/2015	-	8.97	-		835.75	-
	12/4/2015	-	8.88	-		835.84	-
MW-09					843.63		
	12/28/2015	3.85	5.64	1.79		837.99	839.30
	12/24/2015	3.94	5.72	1.78		837.91	839.21
	12/21/2015	4.05	5.85	1.80		837.78	839.10
	12/18/2015	4.45	6.37	1.92		837.26	838.66
	12/11/2015	5.20	7.01	1.81		836.62	837.94
	12/7/2015	4.87	6.55	1.68		837.08	838.31
	12/4/2015	4.35	6.45	2.10		837.18	838.72
MW-10					845.41		
	12/28/2015	-	4.85	-		840.56	-
	12/24/2015	-	7.12	-		838.29	-
	12/21/2015	-	7.05	-		838.36	-
	12/18/2015	-	8.13	-		837.28	-
	12/11/2015	-	9.01	-		836.40	-
	12/7/2015	-	8.40	-		837.01	-
	12/4/2015	-	7.40	-		838.01	-

Table 2. Groundwater Elevation and Product Thickness Data

Plantation Pipe Line Company

Lewis Drive Release, Belton, South Carolina

Site ID #18693 "Kinder Morgan Belton Pipeline Release"

Location ID	Date	Depth to Product (ft BTOC)	Depth to Water (ft BTOC)	Product Thickness (ft)	Top of Casing Elevation (ft amsl)	Groundwater Elevation (ft amsl)	Corrected ¹ Groundwater Elevation (ft amsl)
MW-11					855.63		
	12/28/2015	-	25.15	-		830.48	-
	12/24/2015	-	25.60	-		830.03	-
	12/21/2015	25.96	25.97	0.01		829.66	829.67
	12/18/2015	26.14	26.20	0.06		829.43	829.47
	12/11/2015	26.14	26.18	0.04		829.45	829.48
	12/7/2015	-	26.20	-		829.43	-
	12/4/2015	-	26.32	-		829.31	-
MW-12					834.53		
	12/28/2015	10.30	11.43	1.13		823.10	823.93
	12/24/2015	9.36	10.80	1.44		823.73	824.78
	12/21/2015	11.48	13.47	1.99		821.06	822.52
	12/18/2015	11.40	13.55	2.15		820.98	822.55
	12/11/2015	11.95	14.07	2.12		820.46	822.01
	12/7/2015	12.05	14.14	2.09		820.39	821.92
	12/4/2015	12.07	14.68	2.61		819.85	821.76
MW-13					848.84		
	12/28/2015	-	17.25	-		831.59	-
	12/24/2015	-	18.11	-		830.73	-
	12/21/2015	-	18.23	-		830.61	-
	12/18/2015	-	18.41	-		830.43	-
	12/11/2015	-	18.45	-		830.39	-
	12/4/2015	-	18.62	-		830.22	-
MW-14					838.70		
	12/28/2015	-	12.13	-		826.57	-
	12/24/2015	-	13.91	-		824.79	-
	12/21/2015	-	14.05	-		824.65	-
	12/18/2015	-	14.43	-		824.27	-
	12/11/2015	-	14.50	-		824.20	-
	12/4/2015	-	13.89	-		824.81	-
MW-15					831.03		
	12/28/2015	-	9.75	-		821.28	-
	12/24/2015	-	9.51	-		821.52	-
	12/21/2015	-	11.05	-		819.98	-
	12/18/2015	-	11.00	-		820.03	-
	12/11/2015	-	11.54	-		819.49	-
	12/7/2015	-	11.45	-		819.58	-
	12/4/2015	-	11.44	-		819.59	-
MW-15B					831.29		
	12/28/2015	-	15.20	-		816.09	-
	12/24/2015	-	15.44	-		815.85	-
	12/21/2015	-	15.90	-		815.39	-
	12/18/2015	-	16.00	-		815.29	-
	12/11/2015	-	16.06	-		815.23	-
	12/7/2015	-	16.10	-		815.19	-
	12/4/2015	-	16.06	-		815.23	-

Table 2. Groundwater Elevation and Product Thickness Data
 Plantation Pipe Line Company
 Lewis Drive Release, Belton, South Carolina
 Site ID #18693 "Kinder Morgan Belton Pipeline Release"

Location ID	Date	Depth to Product (ft BTOC)	Depth to Water (ft BTOC)	Product Thickness (ft)	Top of Casing Elevation (ft amsl)	Groundwater Elevation (ft amsl)	Corrected ¹ Groundwater Elevation (ft amsl)
MW-16					847.67		
	12/28/2015	7.95	8.83	0.88		838.84	839.48
	12/24/2015	8.07	8.92	0.85		838.75	839.37
	12/21/2015	8.15	9.02	0.87		838.65	839.28
	12/18/2015	8.41	9.65	1.24		838.02	838.92
	12/11/2015	8.35	9.56	1.21		838.11	838.99
	12/7/2015	8.37	9.40	1.03		838.27	839.02
	12/4/2015	8.42	9.78	1.36		837.89	838.88
MW-17					855.35		
	12/28/2015	-	10.51	-		844.84	-
	12/24/2015	-	10.72	-		844.63	-
	12/21/2015	-	10.80	-		844.55	-
	12/18/2015	-	10.68	-		844.67	-
	12/11/2015	-	10.80	-		844.55	-
	12/4/2015	-	10.80	-		844.55	-
MW-18					846.89		
	12/28/2015	9.24	12.23	2.99		834.66	836.84
	12/24/2015	9.35	12.33	2.98		834.56	836.73
	12/21/2015	9.41	12.95	3.54		833.94	836.52
	12/18/2015	10.28	13.75	3.47		833.14	835.67
	12/11/2015	10.55	14.15	3.60		832.74	835.36
	12/7/2015	10.18	13.85	3.67		833.04	835.71
	12/4/2015	10.10	14.11	4.01		832.78	835.70
MW-19					853.94		
	12/28/2015	-	3.80	-		850.14	-
	12/24/2015	-	3.41	-		850.53	-
	12/21/2015	-	5.22	-		848.72	-
	12/18/2015	-	5.51	-		848.43	-
	12/11/2015	-	7.19	-		846.75	-
	12/7/2015	-	8.00	-		845.94	-
	12/4/2015	-	7.86	-		846.08	-
MW-20					852.89		
	12/28/2015	8.08	10.25	2.17		842.64	844.22
	12/24/2015	8.20	10.38	2.18		842.51	844.10
	12/21/2015	8.30	10.48	2.18		842.41	844.00
	12/18/2015	8.37	10.80	2.43		842.09	843.86
	12/11/2015	8.63	11.40	2.77		841.49	843.51
	12/7/2015	8.75	11.40	2.65		841.49	843.42
	12/4/2015	8.80	11.80	3.00		841.09	843.28
MW-21					855.77		
	12/28/2015	-	12.49	-		843.28	-
	12/24/2015	-	12.63	-		843.14	-
	12/21/2015	-	12.76	-		843.01	-
	12/18/2015	-	12.88	-		842.89	-
	12/11/2015	-	13.20	-		842.57	-
	12/7/2015	-	13.26	-		842.51	-
	12/4/2015	-	13.40	-		842.37	-

Table 2. Groundwater Elevation and Product Thickness Data

Plantation Pipe Line Company

Lewis Drive Release, Belton, South Carolina

Site ID #18693 "Kinder Morgan Belton Pipeline Release"

Location ID	Date	Depth to Product (ft BTOC)	Depth to Water (ft BTOC)	Product Thickness (ft)	Top of Casing Elevation (ft amsl)	Groundwater Elevation (ft amsl)	Corrected ¹ Groundwater Elevation (ft amsl)
MW-22					854.60		
	12/28/2015	-	4.93	-		849.67	-
	12/24/2015	-	5.13	-		849.47	-
	12/21/2015	-	5.24	-		849.36	-
	12/18/2015	-	5.25	-		849.35	-
	12/11/2015	-	6.71	-		847.89	-
	12/7/2015	-	6.50	-		848.10	-
	12/4/2015	-	6.47	-		848.13	-
MW-23					849.57		
	12/28/2015	-	5.22	-		844.35	-
	12/24/2015	-	5.35	-		844.22	-
	12/21/2015	-	6.40	-		843.17	-
	12/18/2015	-	6.45	-		843.12	-
	12/11/2015	-	6.98	-		842.59	-
	12/7/2015	-	6.95	-		842.62	-
	12/4/2015	-	7.11	-		842.46	-
MW-23B					849.69		
	12/28/2015	-	8.18	-		841.51	-
	12/24/2015	-	9.30	-		840.39	-
	12/21/2015	-	10.00	-		839.69	-
	12/18/2015	-	10.75	-		838.94	-
	12/11/2015	-	11.93	-		837.76	-
	12/7/2015	-	12.80	-		836.89	-
	12/4/2015	-	13.25	-		836.44	-
MW-24					817.92		
	12/28/2015	-	4.43	-		813.49	-
	12/24/2015	-	4.12	-		813.80	-
	12/21/2015	-	4.52	-		813.40	-
	12/18/2015	-	4.38	-		813.54	-
	12/7/2015	-	4.78	-		813.14	-
	12/4/2015	-	5.08	-		812.84	-
MW-24B					818.72		
	12/28/2015	-	5.34	-		813.38	-
	12/24/2015	-	5.18	-		813.54	-
	12/21/2015	-	5.41	-		813.31	-
	12/18/2015	-	5.43	-		813.29	-
	12/7/2015	-	5.55	-		813.17	-
	12/4/2015	-	5.97	-		812.75	-
RS-01					850.33		
	12/28/2015	8.60	8.75	0.15		841.58	841.69
	12/24/2015	9.63	9.76	0.13		840.57	840.67
	12/21/2015	10.25	10.39	0.14		839.94	840.04
	12/18/2015	11.00	11.11	0.11		839.22	839.30
	12/11/2015	10.81	11.10	0.29		839.23	839.44
	12/7/2015	10.60	10.84	0.24		839.49	839.67
	12/4/2015	10.50	10.76	0.26		839.57	839.76

Table 2. Groundwater Elevation and Product Thickness Data
 Plantation Pipe Line Company
 Lewis Drive Release, Belton, South Carolina
 Site ID #18693 "Kinder Morgan Belton Pipeline Release"

Location ID	Date	Depth to Product (ft BTOC)	Depth to Water (ft BTOC)	Product Thickness (ft)	Top of Casing Elevation (ft amsl)	Groundwater Elevation (ft amsl)	Corrected ¹ Groundwater Elevation (ft amsl)
RS-02					850.38		
	12/28/2015	7.15	7.35	0.20		843.03	843.17
	12/24/2015	8.00	8.20	0.20		842.18	842.32
	12/21/2015	8.78	8.95	0.17		841.43	841.55
	12/18/2015	9.73	9.92	0.19		840.46	840.60
	12/11/2015	9.98	10.17	0.19		840.21	840.35
	12/7/2015	9.57	9.80	0.23		840.58	840.74
	12/4/2015	10.46	10.72	0.26		839.66	839.85
RS-04					851.65		
	12/28/2015	-	5.35	-		846.30	-
	12/24/2015	-	6.65	-		845.00	-
	12/21/2015	-	7.60	-		844.05	-
	12/18/2015	-	9.37	-		842.28	-
	12/11/2015	-	9.95	-		841.70	-
	12/7/2015	-	9.93	-		841.72	-
	12/4/2015	-	9.93	-		841.72	-
RS-05					848.55		
	12/28/2015	8.54	8.70	0.16		839.85	839.96
	12/24/2015	9.25	9.45	0.20		839.10	839.24
	12/21/2015	9.63	9.85	0.22		838.70	838.86
	12/18/2015	9.94	10.20	0.26		838.35	838.54
	12/11/2015	9.80	10.10	0.30		838.45	838.67
	12/7/2015	9.80	10.03	0.23		838.52	838.69
	12/4/2015	-	9.78	-		838.77	-
RS-06					850.97		
	12/28/2015	9.58	9.70	0.12		841.27	841.36
	12/24/2015	10.40	10.57	0.17		840.40	840.52
	12/21/2015	10.80	11.00	0.20		839.97	840.11
	12/18/2015	11.35	11.60	0.25		839.37	839.55
	12/11/2015	11.22	11.51	0.29		839.46	839.67
	12/7/2015	11.11	11.35	0.24		839.62	839.79
	12/4/2015	10.84	11.11	0.27		839.86	840.06
RS-07					856.29		
	12/28/2015	8.73	8.80	0.07		847.49	847.54
	12/24/2015	9.62	9.74	0.12		846.55	846.64
	12/21/2015	10.67	10.75	0.08		845.54	845.60
	12/18/2015	11.05	11.15	0.10		845.14	845.21
	12/11/2015	11.10	11.25	0.15		845.04	845.15
	12/7/2015	11.11	11.20	0.09		845.09	845.15
	12/4/2015	11.15	11.40	0.25		844.89	845.07
RS-08					855.19		
	12/28/2015	9.20	9.45	0.25		845.74	845.93
	12/24/2015	9.75	10.20	0.45		844.99	845.32
	12/21/2015	10.69	11.07	0.38		844.12	844.40
	12/18/2015	11.19	11.46	0.27		843.73	843.93
	12/11/2015	11.14	11.81	0.67		843.38	843.87
	12/7/2015	11.25	11.75	0.50		843.44	843.81
	12/4/2015	11.35	12.13	0.78		843.06	843.63

Table 2. Groundwater Elevation and Product Thickness Data

Plantation Pipe Line Company

Lewis Drive Release, Belton, South Carolina

Site ID #18693 "Kinder Morgan Belton Pipeline Release"

Location ID	Date	Depth to Product (ft BTOC)	Depth to Water (ft BTOC)	Product Thickness (ft)	Top of Casing Elevation (ft amsl)	Groundwater Elevation (ft amsl)	Corrected ¹ Groundwater Elevation (ft amsl)
RS-09					849.12		
	12/28/2015	10.40	10.90	0.50		838.22	838.58
	12/24/2015	10.86	11.30	0.44		837.82	838.14
	12/21/2015	11.65	12.02	0.37		837.10	837.37
	12/18/2015	11.68	12.09	0.41		837.03	837.33
	12/11/2015	11.58	12.05	0.47		837.07	837.41
	12/7/2015	11.65	11.98	0.33		837.14	837.38
	12/4/2015	11.55	12.00	0.45		837.12	837.45
RS-10					847.52		
	12/28/2015	8.09	8.15	0.06		839.37	839.42
	12/24/2015	8.70	8.75	0.05		838.77	838.81
	12/21/2015	-	9.10	-		838.42	-
	12/18/2015	-	9.15	-		838.37	-
	12/11/2015	-	9.12	-		838.40	-
	12/7/2015	9.05	9.65	0.60		837.87	838.31
	12/4/2015	8.92	10.45	1.53		837.07	838.19
RS-11					848.41		
	12/28/2015	-	8.68	-		839.73	-
	12/24/2015	-	9.24	-		839.17	-
	12/21/2015	-	9.40	-		839.01	-
	12/18/2015	-	9.63	-		838.78	-
	12/11/2015	-	9.58	-		838.83	-
	12/7/2015	-	9.65	-		838.76	-
	12/4/2015	-	9.78	-		838.63	-
RS-12					848.87		
	12/28/2015	-	9.14	-		839.73	-
	12/24/2015	-	9.70	-		839.17	-
	12/21/2015	-	9.90	-		838.97	-
	12/18/2015	-	10.10	-		838.77	-
	12/11/2015	-	10.09	-		838.78	-
	12/7/2015	-	10.15	-		838.72	-
	12/4/2015	-	10.27	-		838.60	-
RS-13					848.28		
	12/28/2015	-	7.50	-		840.78	-
	12/24/2015	-	8.61	-		839.67	-
	12/21/2015	-	10.98	-		837.30	-
	12/18/2015	-	11.20	-		837.08	-
	12/11/2015	11.70	11.75	0.05		836.53	836.57
	12/7/2015	11.65	11.70	0.05		836.58	836.62
	12/4/2015	11.50	11.60	0.10		836.68	836.75
RS-14					846.92		
	12/28/2015	-	5.19	-		841.73	-
	12/24/2015	-	6.74	-		840.18	-
	12/21/2015	-	7.77	-		839.15	-
	12/18/2015	-	8.18	-		838.74	-
	12/11/2015	-	8.30	-		838.62	-
	12/7/2015	-	8.16	-		838.76	-
	12/4/2015	-	8.04	-		838.88	-

Table 2. Groundwater Elevation and Product Thickness Data
Plantation Pipe Line Company
Lewis Drive Release, Belton, South Carolina
Site ID #18693 "Kinder Morgan Belton Pipeline Release"

Location ID	Date	Depth to Product (ft BTOC)	Depth to Water (ft BTOC)	Product Thickness (ft)	Top of Casing Elevation (ft amsl)	Groundwater Elevation (ft amsl)	Corrected ¹ Groundwater Elevation (ft amsl)
RS-15					848.97		
	12/28/2015	-	7.50	-		841.47	-
	12/24/2015	-	8.17	-		840.80	-
	12/21/2015	-	9.85	-		839.12	-
	12/18/2015	-	9.17	-		839.80	-
	12/11/2015	-	9.60	-		839.37	-
	12/7/2015	-	9.46	-		839.51	-
	12/4/2015	-	9.35	-		839.62	-
RS-16					846.77		
	12/28/2015	-	4.51	-		842.26	-
	12/24/2015	-	5.08	-		841.69	-
	12/21/2015	-	7.22	-		839.55	-
	12/18/2015	-	6.85	-		839.92	-
	12/11/2015	-	8.47	-		838.30	-
	12/7/2015	-	8.11	-		838.66	-
	12/4/2015	-	7.85	-		838.92	-
RS-17					845.15		
	12/28/2015	-	2.91	-		842.24	-
	12/24/2015	-	3.11	-		842.04	-
	12/21/2015	-	5.96	-		839.19	-
	12/18/2015	-	5.23	-		839.92	-
	12/11/2015	-	7.00	-		838.15	-
	12/7/2015	-	6.61	-		838.54	-
	12/4/2015	-	6.37	-		838.78	-
RS-18					848.59		
	12/28/2015	8.63	8.90	0.27		839.69	839.89
	12/24/2015	8.61	8.89	0.28		839.70	839.91
	12/21/2015	10.48	10.75	0.27		837.84	838.04
	12/18/2015	9.45	10.25	0.80		838.34	838.93
	12/11/2015	10.70	10.98	0.28		837.61	837.82
	12/7/2015	10.63	10.85	0.22		837.74	837.90
	12/4/2015	10.49	10.80	0.31		837.79	838.02
RS-19					852.37		
	12/28/2015	-	2.60	-		849.77	-
	12/24/2015	-	5.23	-		847.14	-
	12/21/2015	-	3.34	-		849.03	-
	12/18/2015	-	2.70	-		849.67	-
	12/11/2015	-	5.30	-		847.07	-
	12/7/2015	-	4.80	-		847.57	-
	12/4/2015	-	4.33	-		848.04	-
RS-20					851.99		
	12/28/2015	-	3.25	-		848.74	-
	12/24/2015	-	4.20	-		847.79	-
	12/21/2015	-	6.29	-		845.70	-
	12/18/2015	-	4.75	-		847.24	-
	12/11/2015	-	5.41	-		846.58	-
	12/7/2015	-	5.00	-		846.99	-
	12/4/2015	-	4.70	-		847.29	-

Table 2. Groundwater Elevation and Product Thickness Data

Plantation Pipe Line Company

Lewis Drive Release, Belton, South Carolina

Site ID #18693 "Kinder Morgan Belton Pipeline Release"

Location ID	Date	Depth to Product (ft BTOC)	Depth to Water (ft BTOC)	Product Thickness (ft)	Top of Casing Elevation (ft amsl)	Groundwater Elevation (ft amsl)	Corrected ¹ Groundwater Elevation (ft amsl)
RT-1A					856.21		
	12/28/2015	11.00	11.27	0.27		844.94	845.14
	12/24/2015	11.55	11.75	0.20		844.46	844.61
	12/21/2015	12.40	12.60	0.20		843.61	843.76
	12/18/2015	12.45	12.70	0.25		843.51	843.69
	12/11/2015	12.82	13.10	0.28		843.11	843.32
	12/7/2015	12.95	13.15	0.20		843.06	843.21
	12/4/2015	13.05	13.45	0.40		842.76	843.05
RT-1B					857.30		
	12/28/2015	12.02	12.29	0.27		845.01	845.20
	12/24/2015	12.55	12.75	0.20		844.55	844.69
	12/21/2015	13.37	13.58	0.21		843.72	843.87
	12/18/2015	13.42	13.67	0.25		843.63	843.81
	12/11/2015	13.80	14.08	0.28		843.22	843.42
	12/7/2015	13.90	14.12	0.22		843.18	843.34
	12/4/2015	14.02	14.40	0.38		842.90	843.17
RT-1C					857.02		
	12/28/2015	11.77	12.03	0.26		844.99	845.18
	12/24/2015	12.30	12.51	0.21		844.51	844.66
	12/21/2015	13.13	13.33	0.20		843.69	843.83
	12/18/2015	13.18	13.45	0.27		843.57	843.76
	12/11/2015	13.57	13.85	0.28		843.17	843.37
	12/7/2015	13.67	13.90	0.23		843.12	843.28
	12/4/2015	13.80	14.13	0.33		842.89	843.13
RT-2A					818.31		
	12/28/2015	-	1.60	-		816.71	-
	12/24/2015	-	1.80	-		816.51	-
	12/21/2015	-	1.63	-		816.68	-
	12/18/2015	-	1.65	-		816.66	-
	12/11/2015	-	1.68	-		816.63	-
	12/7/2015	-	1.70	-		816.61	-
	12/4/2015	-	1.65	-		816.66	-
RT-2B					818.92		
	12/28/2015	-	2.30	-		816.62	-
	12/24/2015	-	2.50	-		816.42	-
	12/21/2015	-	2.35	-		816.57	-
	12/18/2015	-	2.35	-		816.57	-
	12/11/2015	-	2.40	-		816.52	-
	12/7/2015	-	2.40	-		816.52	-
	12/4/2015	-	2.37	-		816.55	-
RT-2C					819.02		
	12/28/2015	2.20	2.41	0.21		816.61	816.76
	12/24/2015	2.35	2.49	0.14		816.53	816.63
	12/21/2015	2.30	2.50	0.20		816.52	816.66
	12/18/2015	2.27	2.47	0.20		816.55	816.69
	12/11/2015	2.35	2.45	0.10		816.57	816.64
	12/7/2015	-	2.37	-		816.65	-
	12/4/2015	-	2.33	-		816.69	-

Table 2. Groundwater Elevation and Product Thickness Data

Plantation Pipe Line Company

Lewis Drive Release, Belton, South Carolina

Site ID #18693 "Kinder Morgan Belton Pipeline Release"

Location ID	Date	Depth to Product (ft BTOC)	Depth to Water (ft BTOC)	Product Thickness (ft)	Top of Casing Elevation (ft amsl)	Groundwater Elevation (ft amsl)	Corrected ¹ Groundwater Elevation (ft amsl)
RT-2D					819.59		
	12/28/2015	2.85	2.90	0.05		816.69	816.73
	12/24/2015	-	3.09	-		816.50	-
	12/21/2015	-	2.90	-		816.69	-
	12/18/2015	-	2.90	-		816.69	-
	12/11/2015	-	3.00	-		816.59	-
	12/7/2015	-	2.95	-		816.64	-
	12/4/2015	-	2.92	-		816.67	-
RT-2E					819.40		
	12/28/2015	-	2.69	-		816.71	-
	12/24/2015	-	2.80	-		816.60	-
	12/21/2015	-	2.68	-		816.72	-
	12/18/2015	-	2.67	-		816.73	-
	12/11/2015	-	2.80	-		816.60	-
	12/7/2015	-	2.80	-		816.60	-
	12/4/2015	-	2.69	-		816.71	-
RT-2F					819.52		
	12/28/2015	2.78	2.80	0.02		816.72	816.73
	12/24/2015	2.82	2.85	0.03		816.67	816.69
	12/21/2015	-	2.85	-		816.67	-
	12/18/2015	2.81	2.85	0.04		816.67	816.70
	12/11/2015	-	2.94	-		816.58	-
	12/7/2015	-	2.86	-		816.66	-
	12/4/2015	-	2.85	-		816.67	-
RT-2G					820.31		
	12/28/2015	-	1.32	-		818.99	-
	12/24/2015	-	2.86	-		817.45	-
	12/21/2015	-	1.75	-		818.56	-
	12/18/2015	-	11.70	-		808.61	-
	12/11/2015	-	2.08	-		818.23	-
	12/7/2015	-	2.04	-		818.27	-
	12/4/2015	-	2.04	-		818.27	-
RT-2H					822.17		
	12/28/2015	-	3.50	-		818.67	-
	12/24/2015	-	3.50	-		818.67	-
	12/21/2015	-	3.63	-		818.54	-
	12/18/2015	-	3.60	-		818.57	-
	12/11/2015	-	3.75	-		818.42	-
	12/7/2015	-	3.70	-		818.47	-
	12/4/2015	-	3.69	-		818.48	-
RT-2I					819.80		
	12/28/2015	-	1.00	-		818.80	-
	12/24/2015	-	0.70	-		819.10	-
	12/21/2015	-	1.60	-		818.20	-
	12/18/2015	-	1.62	-		818.18	-
	12/11/2015	-	3.00	-		816.80	-
	12/7/2015	-	1.90	-		817.90	-
	12/4/2015	-	1.92	-		817.88	-

Table 2. Groundwater Elevation and Product Thickness Data

Plantation Pipe Line Company

Lewis Drive Release, Belton, South Carolina

Site ID #18693 "Kinder Morgan Belton Pipeline Release"

Location ID	Date	Depth to Product (ft BTOC)	Depth to Water (ft BTOC)	Product Thickness (ft)	Top of Casing Elevation (ft amsl)	Groundwater Elevation (ft amsl)	Corrected ¹ Groundwater Elevation (ft amsl)
RT-2J					818.38		
	12/28/2015	-	0.90	-		817.48	-
	12/24/2015	-	0.85	-		817.53	-
	12/21/2015	-	1.00	-		817.38	-
	12/18/2015	-	1.14	-		817.24	-
	12/11/2015	-	1.30	-		817.08	-
	12/7/2015	-	1.20	-		817.18	-
	12/4/2015	-	1.21	-		817.17	-
RT-2K					817.46		
	12/28/2015	-	1.31	-		816.15	-
	12/24/2015	-	1.30	-		816.16	-
	12/21/2015	-	1.30	-		816.16	-
	12/18/2015	-	2.72	-		814.74	-
	12/11/2015	-	1.35	-		816.11	-
	12/7/2015	-	1.32	-		816.14	-
	12/4/2015	-	1.32	-		816.14	-
RT-2L					820.35		
	12/28/2015	-	2.06	-		818.29	-
	12/24/2015	-	2.04	-		818.31	-
	12/21/2015	-	2.13	-		818.22	-
	12/18/2015	2.55	2.63	0.08		817.72	817.78
	12/11/2015	2.36	2.64	0.28		817.71	817.91
	12/7/2015	-	2.38	-		817.97	-
	12/4/2015	-	2.42	-		817.93	-
RW-01					851.92		
	12/28/2015	-	6.70	-		845.22	-
	12/24/2015	-	7.05	-		844.87	-
	12/21/2015	-	7.77	-		844.15	-
	12/18/2015	-	8.03	-		843.89	-
	12/11/2015	-	8.68	-		843.24	-
	12/7/2015	-	9.00	-		842.92	-
	12/4/2015	-	8.95	-		842.97	-
RW-02					852.69		
	12/28/2015	18.05	18.25	0.20		834.44	834.59
	12/24/2015	18.70	18.92	0.22		833.77	833.93
	12/21/2015	19.07	19.20	0.13		833.49	833.58
	12/18/2015	19.59	19.82	0.23		832.87	833.04
	12/11/2015	19.50	19.70	0.20		832.99	833.14
	12/7/2015	19.40	19.55	0.15		833.14	833.25
	12/4/2015	19.47	19.75	0.28		832.94	833.14
RW-03					852.34		
	12/28/2015	18.72	18.90	0.18		833.44	833.57
	12/24/2015	19.34	19.53	0.19		832.81	832.95
	12/21/2015	19.60	19.70	0.10		832.64	832.71
	12/18/2015	19.97	20.25	0.28		832.09	832.29
	12/11/2015	19.90	20.15	0.25		832.19	832.37
	12/7/2015	19.90	20.00	0.10		832.34	832.41
	12/4/2015	19.95	20.44	0.49		831.90	832.26

Table 2. Groundwater Elevation and Product Thickness Data

Plantation Pipe Line Company

Lewis Drive Release, Belton, South Carolina

Site ID #18693 "Kinder Morgan Belton Pipeline Release"

Location ID	Date	Depth to Product (ft BTOC)	Depth to Water (ft BTOC)	Product Thickness (ft)	Top of Casing Elevation (ft amsl)	Groundwater Elevation (ft amsl)	Corrected ¹ Groundwater Elevation (ft amsl)
RW-04					853.93		
	12/28/2015	24.97	25.04	0.07		828.89	828.94
	12/24/2015	25.70	25.81	0.11		828.12	828.20
	12/21/2015	25.85	25.97	0.12		827.96	828.05
	12/18/2015	26.04	26.30	0.26		827.63	827.82
	12/11/2015	26.07	26.70	0.63		827.23	827.69
	12/7/2015	26.14	26.20	0.06		827.73	827.78
	12/4/2015	26.20	26.45	0.25		827.48	827.66
RW-05					853.53		
	12/28/2015	28.90	29.50	0.60		824.03	824.47
	12/24/2015	29.86	30.31	0.45		823.22	823.55
	12/21/2015	30.00	31.20	1.20		822.33	823.21
	12/18/2015	30.39	31.32	0.93		822.21	822.89
	12/11/2015	30.52	31.15	0.63		822.38	822.84
	12/7/2015	30.56	30.90	0.34		822.63	822.88
	12/4/2015	30.58	31.11	0.53		822.42	822.81
RW-06					846.21		
	12/28/2015	23.05	24.11	1.06		822.10	822.87
	12/24/2015	24.00	25.00	1.00		821.21	821.94
	12/21/2015	24.23	25.62	1.39		820.59	821.60
	12/18/2015	24.36	25.84	1.48		820.37	821.45
	12/11/2015	24.50	26.18	1.68		820.03	821.25
	12/7/2015	24.40	25.80	1.40		820.41	821.43
	12/4/2015	24.50	26.15	1.65		820.06	821.26
RW-07					843.19		
	12/28/2015	-	19.53	-		823.66	-
	12/24/2015	-	19.60	-		823.59	-
	12/21/2015	20.89	21.65	0.76		821.54	822.10
	12/18/2015	20.72	21.60	0.88		821.59	822.23
	12/11/2015	20.95	22.40	1.45		820.79	821.85
	12/7/2015	20.95	22.60	1.65		820.59	821.80
	12/4/2015	20.95	22.72	1.77		820.47	821.76
RW-08					835.48		
	12/28/2015	12.56	13.80	1.24		821.68	822.58
	12/24/2015	12.40	13.20	0.80		822.28	822.86
	12/21/2015	13.80	17.50	3.70		817.98	820.68
	12/18/2015	13.90	15.21	1.31		820.27	821.22
	12/11/2015	14.39	15.64	1.25		819.84	820.75
	12/7/2015	14.54	15.50	0.96		819.98	820.68
	12/4/2015	14.40	16.00	1.60		819.48	820.65
RW-09					835.12		
	12/28/2015	-	10.02	-		825.10	-
	12/24/2015	-	9.30	-		825.82	-
	12/21/2015	10.94	12.90	1.96		822.22	823.65
	12/18/2015	10.87	12.90	2.03		822.22	823.71
	12/11/2015	-	11.95	-		823.17	-
	12/7/2015	-	12.01	-		823.11	-
	12/4/2015	-	12.06	-		823.06	-

Table 2. Groundwater Elevation and Product Thickness Data

Plantation Pipe Line Company

Lewis Drive Release, Belton, South Carolina

Site ID #18693 "Kinder Morgan Belton Pipeline Release"

Location ID	Date	Depth to Product (ft BTOC)	Depth to Water (ft BTOC)	Product Thickness (ft)	Top of	Groundwater Elevation (ft amsl)	Corrected ¹
					Casing Elevation (ft amsl)		Groundwater Elevation (ft amsl)
RW-10					848.53		
	12/28/2015	9.93	10.91	0.98		837.62	838.34
	12/24/2015	10.68	11.50	0.82		837.03	837.63
	12/21/2015	10.94	11.87	0.93		836.66	837.34
	12/18/2015	11.11	12.78	1.67		835.75	836.97
	12/11/2015	11.00	12.80	1.80		835.73	837.05
	12/7/2015	11.00	12.65	1.65		835.88	837.09
	12/4/2015	11.04	12.97	1.93		835.56	836.97
RW-11					852.97		
	12/28/2015	5.75	6.05	0.30		846.92	847.14
	12/24/2015	6.35	7.05	0.70		845.92	846.43
	12/21/2015	7.33	7.97	0.64		845.00	845.46
	12/18/2015	7.70	8.41	0.71		844.56	845.08
	12/11/2015	8.35	8.75	0.40		844.22	844.51
	12/7/2015	8.30	8.65	0.35		844.32	844.57
	12/4/2015	8.35	9.00	0.65		843.97	844.44
RW-12					852.75		
	12/28/2015	6.25	6.42	0.17		846.33	846.45
	12/24/2015	6.85	7.00	0.15		845.75	845.86
	12/21/2015	8.80	8.90	0.10		843.85	843.92
	12/18/2015	8.83	8.97	0.14		843.78	843.88
	12/11/2015	-	9.94	-		842.81	-
	12/7/2015	-	9.96	-		842.79	-
	12/4/2015	-	10.10	-		842.65	-
RW-13					847.97		
	12/28/2015	10.35	10.44	0.09		837.53	837.59
	12/24/2015	10.95	11.15	0.20		836.82	836.97
	12/21/2015	11.20	11.34	0.14		836.63	836.73
	12/18/2015	11.47	11.75	0.28		836.22	836.42
	12/11/2015	11.43	11.65	0.22		836.32	836.48
	12/7/2015	11.45	11.60	0.15		836.37	836.48
	12/4/2015	11.50	11.90	0.40		836.07	836.36
RW-14					827.54		
	12/28/2015	9.35	9.60	0.25		817.94	818.12
	12/24/2015	9.15	9.52	0.37		818.02	818.29
	12/21/2015	10.03	10.70	0.67		816.84	817.33
	12/18/2015	10.05	10.75	0.70		816.79	817.30
	12/11/2015	10.50	11.00	0.50		816.54	816.91
	12/7/2015	10.45	10.78	0.33		816.76	817.00
	12/4/2015	10.45	11.15	0.70		816.39	816.90
RW-15					851.64		
	12/28/2015	-	10.70	-		840.94	-
	12/24/2015	-	11.93	-		839.71	-
	12/21/2015	-	11.65	-		839.99	-
	12/18/2015	-	12.14	-		839.50	-
	12/11/2015	-	12.15	-		839.49	-
	12/7/2015	-	12.07	-		839.57	-
	12/4/2015	-	12.18	-		839.46	-

Table 2. Groundwater Elevation and Product Thickness Data

Plantation Pipe Line Company

Lewis Drive Release, Belton, South Carolina

Site ID #18693 "Kinder Morgan Belton Pipeline Release"

Location ID	Date	Depth to Product (ft BTOC)	Depth to Water (ft BTOC)	Product Thickness (ft)	Top of Casing Elevation (ft amsl)	Groundwater Elevation (ft amsl)	Corrected¹ Groundwater Elevation (ft amsl)
TW-04R	12/4/2015	-	3.20	-	852.86	849.66	-
TW-05R	12/4/2015	-	3.10	-	850.17	847.07	-
TW-14R	12/4/2015	-	3.75	-	853.60	849.85	-
TW-15R	12/4/2015	-	1.45	-	850.73	849.28	-
TW-21	12/4/2015	-	1.62	-	852.09	850.47	-
TW-28	12/4/2015	19.53	20.40	0.87	853.92	833.52	834.16
TW-34	12/4/2015	-	22.20	-	857.41	835.21	-
TW-35	12/4/2015	-	22.75	-	856.31	833.56	-
TW-40	12/4/2015	-	27.15	-	854.56	827.41	-
TW-41	12/4/2015	-	24.80	-	850.68	825.88	-
TW-42	12/4/2015	23.25	26.30	3.05	848.99	822.69	824.92
TW-45	12/4/2015	25.40	26.60	1.20	850.38	823.78	824.66
TW-46	12/4/2015	-	23.60	-	848.83	825.23	-
TW-55	12/4/2015	-	6.53	-	847.25	840.72	-
TW-59	12/4/2015	-	12.87	-	836.74	823.87	-
TW-60	12/4/2015	-	7.13	-	829.84	822.71	-
TW-64	12/4/2015	-	12.95	-	848.06	835.11	-
TW-65	12/4/2015	-	18.30	-	847.30	829.00	-
TW-66	12/4/2015	-	6.80	-	822.70	815.90	-
TW-67	12/4/2015	-	9.75	-	855.01	845.26	-
TW-68	12/4/2015	-	20.56	-	849.73	829.17	-
TW-69	12/4/2015	-	11.87	-	842.62	830.75	-
TW-70	12/4/2015	-	15.25	-	844.61	829.36	-
TW-73	12/4/2015	-	4.70	-	851.94	847.24	-
TW-76	12/4/2015	-	11.56	-	854.32	842.76	-

Table 2. Groundwater Elevation and Product Thickness Data

Plantation Pipe Line Company

Lewis Drive Release, Belton, South Carolina

Site ID #18693 "Kinder Morgan Belton Pipeline Release"

Location ID	Date	Depth to Product (ft BTOC)	Depth to Water (ft BTOC)	Product Thickness (ft)	Top of Casing Elevation (ft amsl)	Groundwater Elevation (ft amsl)	Corrected¹ Groundwater Elevation (ft amsl)
TW-81	12/4/2015	-	1.65	-	849.64	847.99	-
TW-82	12/4/2015	-	0.79	-	849.93	849.14	-
TW-83	12/4/2015	-	1.21	-	850.66	849.45	-
TW-84	12/4/2015	-	3.15	-	851.55	848.40	-
TW-85	12/4/2015	-	8.48	-	845.39	836.91	-
TW-86	12/4/2015	-	4.10	-	853.31	849.21	-
TW-87	12/4/2015	-	3.71	-	852.53	848.82	-
TW-90	12/4/2015	-	10.60	-	847.03	836.43	-
TW-94	12/4/2015	4.65	4.85	0.20	840.74	835.89	836.03
TW-96	12/4/2015	-	4.51	-	840.81	836.30	-

Notes:

¹ Calculated based on an oil:water density ratio of 0.73

amsl = above mean sea level

BTOC = below top of casing

ft = feet