



CH2M Raleigh
3122 Hightower Blvd, Suite 314
Raleigh, NC 27604
O: 919 875 5251
F: 919 875 5251
www.ch2m.com

March 22, 2016

Delivered via FedEx

Ms. Bobbi Coleman
South Carolina Department of Health and Environmental Control
Assessment Section, UST Management Division
Bureau of Land and Waste Management
2600 Bull Street
Columbia, SC 29201

Subject: **Lewis Drive – Monthly Status Update**
Plantation Pipe Line Company
Belton, South Carolina
Site ID #18693, “Kinder Morgan Belton Pipeline Release”



Dear Ms. Coleman,

On behalf of Plantation Pipe Line Company, CH2M is submitting the attached Monthly Status Report covering February 2016 for the Lewis Drive site. If you have any questions or concerns, please call me at 919-760-1777, Mr. Scott Powell/CH2M at 678-530-4457, or Mr. Jerry Aycock/Plantation at 770-751-4165.

Regards,
CH2M HILL Engineers, Inc.

William M. Waldron, P.E.
Senior Project Manager

Enclosures

- Monthly Report including:
 - Figure 1 – Groundwater Elevation Map
 - Figure 2 – Product Thickness Map
 - Figure 3 – Surface Water Sampling Locations
 - Table 1 – Well Construction Information
 - Table 2 – Groundwater Elevation and Product Thickness Data

Cc (via e-mail):

Jerry Aycock, Plantation, Jerry_Aycock@kindermorgan.com
Mary Clair Lyons, Esq., Plantation, Mary_Lyons@kindermorgan.com
Richard Morton, Esq., Womble Carlyle Sandridge & Rice, PLLC, rmorton@wcsr.com
File

Monthly Report
Plantation Pipe Line Company
Lewis Drive Release
Site ID #18693 “Kinder Morgan Belton Pipeline Release”
February 2016

Activities since Last Report

- Evacuated product/water from Trench RT-2 installed adjacent to Brown’s Creek and groundwater from recovery sumps on a twice per week (usually Mon/Fri) schedule. Transferred product/water to a 21,000-gallon frac tank for on-site oil/water separation and delivery off-site to the locations indicated on the table below. No measureable volume of product has been recovered since the last report (dated 2/8/2015). Since February 2015, product recovery efforts have been focused on the trenches and recovery sumps and select wells that have contained the highest product levels. Recovered **209,008 gallons** (4,976 barrels) of product through the end of February 2016.
- Gauged depth to product and depth to water in recovery sumps, trenches, temporary wells, and recovery wells on a routine basis. During the monthly site-wide gauging event on February 19, 2016, 5 wells and sumps had product thicknesses of 0.5 foot or greater. The greatest product thickness was 3.15 feet, observed in MW-20.
- Due to excessive rainfall in November and December (over 10 inches in each month), groundwater elevations rose and product thicknesses have been depressed.
- Inspected Brown’s Creek and Wetland #1 (Cupboard Creek) south of W Calhoun Road for sheen, odor, or distressed vegetation. None observed. The route of inspection is indicated on Figure 3.
- To date, 19 rounds of surface water samples have been analyzed for benzene, toluene, ethylbenzene, xylenes, and naphthalene.
 - Benzene, toluene, and xylenes were detected in surface water samples SW-01, SW-02, SW-04, SW-08 and SW-09 collected on 2/18/2016. Benzene levels exceeded South Carolina’s applicable surface water standard for benzene of 2.2 µg/L at the same 5 locations. Detections ranged from 2.2 µg/L at SW-09 to 23.4 µg/L at SW-01.
 - Prior to the November round of sampling, no hydrocarbon constituents had been detected in surface water samples since 5/19/2015.
- Since Plantation purchased the property at 112 Lewis Drive and vacated the residence there in January 2016, ambient air monitoring and soil vapor monitoring have been discontinued at the site.
- Issued monthly report to SCDHEC.

Future Activities

- Evacuate product from product recovery sumps, trenches, and select wells routinely.
- Gauge product recovery sumps, trenches, and wells routinely. Gauge 1-inch piezometers monthly.
- Continue to dispose recovered liquids offsite.
- Continue routine visual inspections of Brown’s Creek and Wetland #1 (Cupboard Creek).
- Conduct monthly sampling of surface water at 11 pre-determined locations along Brown’s Creek and Cupboard Creek.
- Continue development of Corrective Action Plan and Basis of Design Report.
- Conduct additional investigation activities to better delineate the dissolved plume.
- Continue coordination with landowners and legal counsel on an as-needed basis.
- Continue monthly reporting to SCDHEC.

Wildlife Issues

- None.

Cumulative Product Shipped

Date	Destination	Total Product (gal)
12/9/2014	PPL Greensboro	4,289
12/9/2014	PPL Greensboro	3,100

Date	Destination	Total Product (gal)
12/12/2014	PPL Greensboro	1,189
12/30/2014	Crystal Clean (FCC)	5,057
12/31/2014	Crystal Clean (FCC)	5,333
1/4/2015	Crystal Clean (FCC)	5,000
1/4/2015	Crystal Clean (FCC)	2,872
1/5/2015	Crystal Clean (FCC)	5,013
1/6/2015	Crystal Clean (FCC)	4,800
1/7/2015	Allied Energies	6,532
1/7/2015	Allied Energies	6,425
1/7/2015	Allied Energies	8,200
1/9/2015	Allied Energies	6,482
1/9/2015	Allied Energies	7,825
1/12/2015	Allied Energies	6,540
1/12/2015	Allied Energies	6,467
1/13/2015	Allied Energies	6,732
1/13/2015	Allied Energies	6,595
1/15/2015	Allied Energies	6,500
1/22/2015	Allied Energies	5,791
1/23/2015	Allied Energies	5,450
1/27/2015	Allied Energies	5,791
1/27/2015	Allied Energies	5,557
1/27/2015	Allied Energies	6,043
1/28/2015	Allied Energies	4,411
2/5/2015	Allied Energies	5,513
2/11/2015	Allied Energies	5,732
2/11/2015	Allied Energies	5,606
2/25/2015	Allied Energies	5,583
3/4/2015	Allied Energies	4,000
3/16/2015	Allied Energies	5,200
6/3/2015	Allied Energies	6,500
6/3/2015	Allied Energies	4,214
8/10/2015	Allied Energies	6,000
11/2/2015	Allied Energies	5,800
11/13/2015	Crystal Clean (FCC)	2,900
12/1/2015	Allied Energies	6,690
12/1/2015	Allied Energies	6,700
12/7/2015	Crystal Clean (FCC)	500
2/29/2016	To be determined	77
	Total (gallons)	209,008
	Total (barrels)	4,976

Notes:

1. Gasoline and water are being field-segregated using a 21,000 gallon frac tank.
2. No measureable volume of product has been recovered since the last status report.

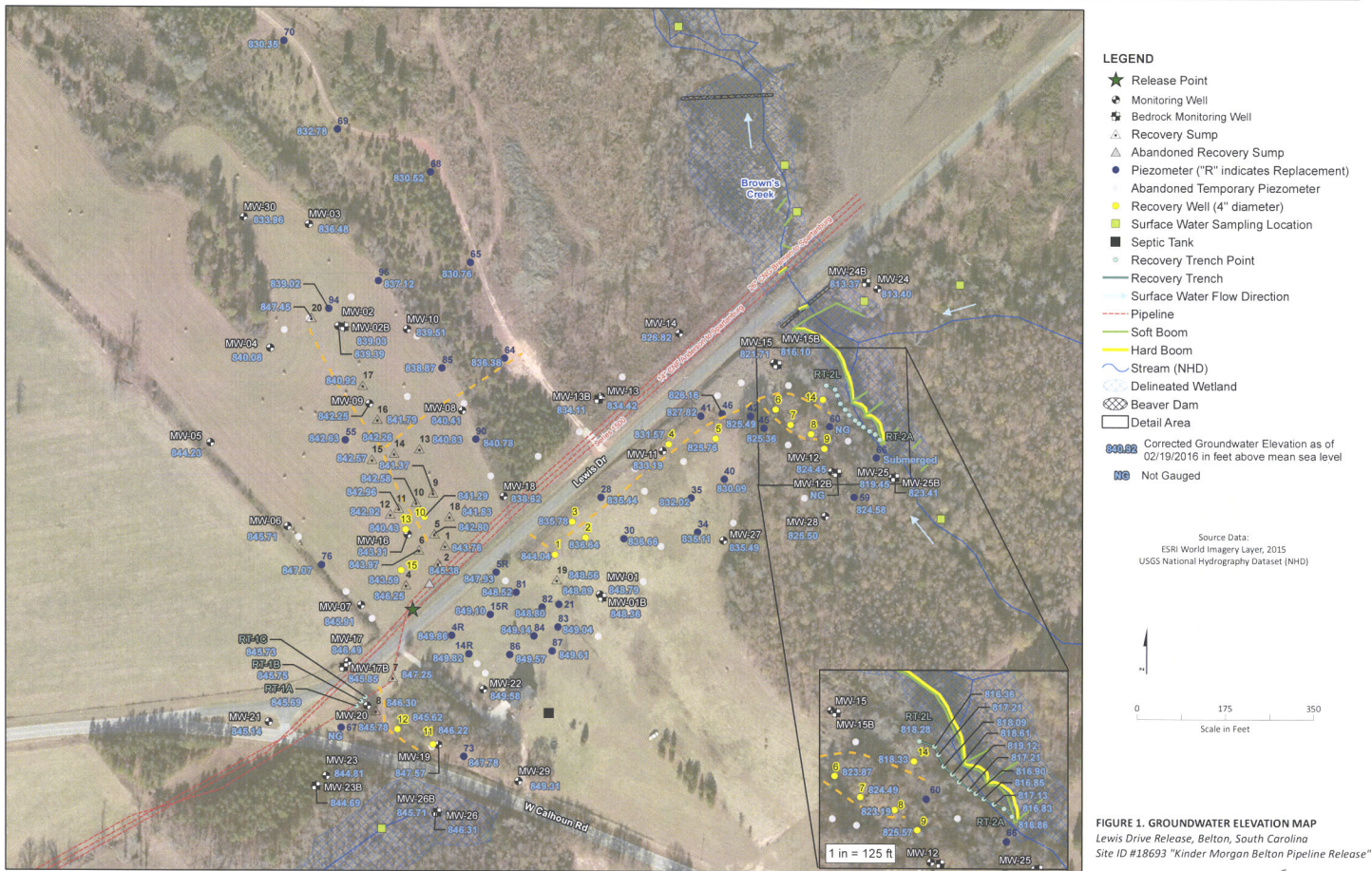
Access Agreements

- Mr. Scott Lewis gave verbal approval to conduct needed response activities on his property. A formal access agreement has been submitted to Mr. Scott & Eric Lewis for consideration, but to date has not been formally executed.

Local Authorities On-Site

- Representatives from the Belton Police Department arrived on site February 18, 2016 to investigate a break-in and theft that occurred at 112 Lewis Drive. Cameras captured the image of a suspect. To our knowledge, no persons have been charged to date.

DRAFT



DRAFT

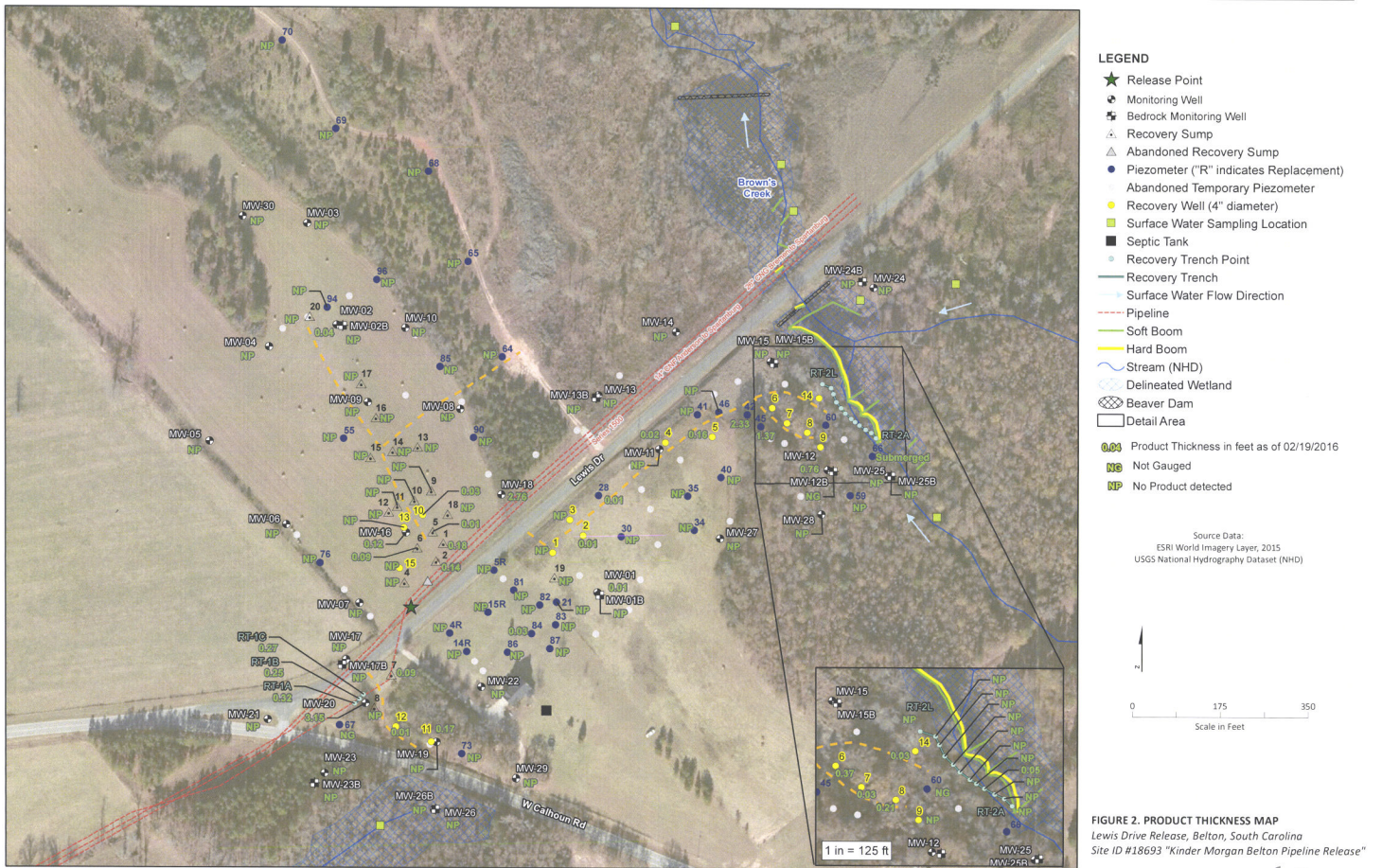


FIGURE 2. PRODUCT THICKNESS MAP
Lewis Drive Release, Belton, South Carolina
Site ID #18693 "Kinder Morgan Belton Pipeline Release"





LEGEND

- ★ Release Point
- Surface Water Sampling Location
- Pipeline
- Inspection Route for Sheen or Distressed Vegetation
- Flow Direction of Creek
- ~ Topographic Contour (5' Interval)
- ~ National Hydrography Dataset Stream
- ⊗ Delineated Wetland
- ⊗ Beaver Dam



Base Map Source:
 ESRI ArcMap World Imagery, 2015
 USGS National Hydrography Dataset (NHD)

FIGURE 3
SURFACE WATER SAMPLING LOCATIONS
 Lewis Drive Release, Belton, South Carolina
 Site ID #18693
 "Kinder Morgan Belton Pipeline Release"

Table 1. Well Construction Information

Plantation Pipe Line Company

Levia Drive Release, Belton, South Carolina

Site ID #18693 "Kinder Morgan Belton Pipeline Release"

Location	Installation Method	Permit #	Date Installed	Date Abandoned	Purpose	Ground Surface Elevation (ft amsl)	TOC Elevation (ft amsl)	Measured Depth to Bottom (ft BTOC)	Bore Hole Diameter (in)	Well Dia (in)	Well Depth (ft bgs)	Bottom of Well (ft amsl)	Top of Screen or Open Borehole Interval (ft BTOC)	Bottom of Screen or Open Borehole Interval (ft BTOC)	Top of Screen or Open Borehole Interval (ft bgs)	Bottom of Screen or Open Borehole Interval (ft bgs)	Top of Screen or Open Borehole Interval (ft amsl)	Bottom of Screen or Open Borehole Interval (ft amsl)	Length of Screen or Open Borehole Interval (ft)
MW-01	CME 550 HSA	MW-10136	6/26/2015	Still in use	Monitoring Well/Gauging	850.25	853.07	15.65	8	2	13.00	837.2	5.82	15.82	3.0	13.0	847.2	837.2	10.00
MW-01B	Schramm Air Rig	MW-10136	6/25/2015	Still in use	Monitoring Well/Gauging	850.45	852.99	44.50	10	6	38.50	812.0	21.03	41.03	18.5	38.5	832.0	812.0	20.00
MW-02	CME 750 HSA	MW-10136	6/25/2015	Still in use	Monitoring Well/Gauging	841.24	841.04	23.14	8	2	20.00	821.2	4.80	19.80	5.0	20.0	836.2	821.2	15.00
MW-02B	Schramm Air Rig	MW-10136	6/24/2015	Still in use	Monitoring Well/Gauging	841.40	841.18	87.15	10	6	61.00	760.4	69.78	80.78	70.0	81.0	771.4	760.4	11.00
MW-03	CME 550 HSA	MW-10136	6/23/2015	Still in use	Monitoring Well/Gauging	838.38	838.36	22.19	8	2	20.00	818.4	4.98	19.98	5.0	20.0	833.4	818.4	15.00
MW-04	CME 550 HSA	MW-10136	6/23/2015	Still in use	Monitoring Well/Gauging	844.51	844.42	22.13	8	2	20.00	824.5	4.91	19.91	5.0	20.0	839.5	824.5	15.00
MW-05	CME 550 HSA	MW-10136	6/24/2015	Still in use	Monitoring Well/Gauging	851.15	851.11	21.78	8	2	20.00	831.1	4.96	19.96	5.0	20.0	846.1	831.1	15.00
MW-06	CME 550 HSA	MW-10136	6/24/2015	Still in use	Monitoring Well/Gauging	852.98	852.92	21.84	8	2	19.60	833.4	4.54	19.54	5.0	19.6	848.0	833.4	15.00
MW-07	CME 550 HSA	MW-10136	6/25/2015	Still in use	Monitoring Well/Gauging	853.02	853.02	15.35	8	2	13.50	839.5	-1.50	13.50	3.5	13.5	849.5	839.5	15.00
MW-08	CME 550 HSA	MW-10136	6/25/2015	Still in use	Monitoring Well/Gauging	844.75	844.72	21.81	8	2	19.70	825.1	4.67	19.67	4.7	19.7	840.1	825.1	15.00
MW-09	CME 550 HSA	MW-10136	6/25/2015	Still in use	Monitoring Well/Gauging	843.72	843.63	22.63	8	2	19.50	824.2	4.41	19.41	4.5	19.5	839.2	824.2	15.00
MW-10	CME 550 HSA	MW-10136	6/25/2015	Still in use	Monitoring Well/Gauging	842.33	845.41	22.41	8	2	20.00	822.3	8.08	23.08	5.0	20.0	837.3	822.3	15.00
MW-11	CME 550 HSA	MW-10136	7/1/2015	Still in use	Monitoring Well/Gauging	852.36	855.63	31.32	8	2	25.20	827.2	13.27	28.27	14.2	25.0	838.2	827.4	15.00
MW-12	CME 550 HSA	MW-10136	6/25/2015	Still in use	Monitoring Well/Gauging	832.20	834.53	22.05	8	2	19.30	812.9	6.63	21.63	4.3	19.3	827.9	812.9	15.00
MW-12B	Geoprobe 3230 DT HSA	MW-10460	12/22/2015	Still in use	Monitoring Well/Gauging	832.26	834.98	45.31	10	6	43.00	789.3	35.72	45.72	33.0	43.0	799.3	789.3	10.00
MW-13	CME 550 HSA	MW-10136	6/26/2015	Still in use	Monitoring Well/Gauging	845.93	848.84	21.15	8	2	19.00	826.9	6.92	21.92	4.0	19.0	841.9	826.9	15.00
MW-13B	Geoprobe 3230 DT HSA	MW-10461	12/21/2015	Still in use	Monitoring Well/Gauging	847.19	849.82	55.41	10	6	58.00	789.2	50.64	60.64	48.0	58.0	799.2	789.2	10.00
MW-14	CME 550 HSA	MW-10136	6/26/2015	Still in use	Monitoring Well/Gauging	836.47	838.70	22.18	8	2	19.30	817.2	6.53	21.53	4.3	19.3	832.2	817.2	15.00
MW-15	CME 550 HSA	MW-10136	6/29/2015	Still in use	Monitoring Well/Gauging	828.68	831.03	18.85	8	2	19.00	809.7	6.35	21.35	4.0	19.0	824.7	809.7	15.00
MW-15B	CME 550 HSA	MW-10136	7/28/2015	Still in use	Monitoring Well/Gauging	828.66	831.29	77.85	10	6	77.85	750.8	70.48	80.48	67.9	77.9	760.8	750.8	10.00
MW-16	CME 750 HSA	MW-10136	6/26/2015	Still in use	Monitoring Well/Gauging	847.63	847.67	25.30	8	2	20.00	827.6	5.03	20.03	5.0	20.0	842.6	827.6	15.00
MW-17	CME 750 HSA	MW-10136	6/29/2015	Still in use	Monitoring Well/Gauging	855.32	855.35	15.30	8	2	11.00	844.3	6.03	11.03	6.0	11.0	849.3	844.3	5.00
MW-17B	Geoprobe 3230 DT HSA	MW-10462	1/7/2016	Still in use	Monitoring Well/Gauging	855.37	855.37	27.40	10	6	27.00	828.4	17.00	27.00	17.0	27.0	838.4	828.4	10.00
MW-18	CME 550 HSA	MW-10136	6/29/2015	Still in use	Monitoring Well/Gauging	846.82	846.89	21.85	8	2	20.00	826.8	5.06	20.06	5.0	20.0	841.8	826.8	15.00
MW-19	CME 750 HSA	MW-10136	6/29/2015	Still in use	Monitoring Well/Gauging	851.23	853.94	12.13	8	2	9.50	841.7	7.20	12.20	4.5	9.5	846.7	841.7	5.00
MW-20	CME 750 HSA	MW-10136	6/30/2015	Still in use	Monitoring Well/Gauging	853.07	852.89	22.25	8	2	19.00	834.1	3.81	18.81	4.0	19.0	849.1	834.1	15.00
MW-21	CME 750 HSA	MW-10136	6/30/2015	Still in use	Monitoring Well/Gauging	855.68	855.77	23.23	8	2	20.00	835.7	5.09	20.09	5.0	20.0	850.7	835.7	15.00
MW-22	CME 750 HSA	MW-10136	7/1/2015	Still in use	Monitoring Well/Gauging	854.62	854.60	13.41	8	2	11.00	843.6	5.98	10.98	6.0	11.0	848.6	843.6	5.00
MW-23	CME 750 HSA	MW-10136	7/1/2015	Still in use	Monitoring Well/Gauging	846.66	849.57	23.24	8	2	20.00	826.7	7.91	22.91	5.0	20.0	841.7	826.7	15.00
MW-23B	CME 550 HSA	MW-10136	7/22/2015	Still in use	Monitoring Well/Gauging	846.81	849.69	55.75	10	6	50.50	796.3	30.88	53.38	28.0	50.5	818.8	796.3	22.50
MW-24	CME 550 HSA	MW-10136	7/15/2015	Still in use	Monitoring Well/Gauging	815.72	817.92	12.50	8	2	13.00	802.7	10.20	15.20	8.0	13.0	807.7	802.7	5.00
MW-24B	CME 550 HSA	MW-10136	7/20/2015	Still in use	Monitoring Well/Gauging	815.83	818.72	41.35	10	6	39.50	776.3	22.39	42.39	19.5	39.5	796.3	776.3	20.00
MW-25	Geoprobe 3230 DT HSA	MW-10463	1/5/2016	Still in use	Monitoring Well/Gauging	823.46	826.18	18.40	8	2	15.00	808.5	8.04	18.04	5.0	15.0	818.5	808.5	10.00
MW-25B	Geoprobe 3230 DT HSA	MW-10464	1/5/2016	Still in use	Monitoring Well/Gauging	822.59	823.81	56.43	10	6	58.00	764.6	49.22	59.22	48.0	58.0	774.6	764.6	10.00
MW-26	Geoprobe 3230 DT HSA	MW-10465	1/4/2016	Still in use	Monitoring Well/Gauging	844.76	847.56	17.27	8	2	15.25	829.5	7.27	17.27	5.0	15.0	839.8	829.8	10.00
MW-26B	Geoprobe 3230 DT HSA	MW-10466	1/4/2016	Still in use	Monitoring Well/Gauging	844.76	847.81	42.81	10	6	38.00	806.8	29.00	41.00	26.0	38.0	818.8	806.8	12.00
MW-27	Geoprobe 3230 DT HSA	MW-10467	1/5/2016	Still in use	Monitoring Well/Gauging	854.22	854.11	30.11	8	2	30.25	824.0	15.11	30.11	15.0	30.0	839.2	824.2	15.00
MW-28	Geoprobe 3230 DT HSA	MW-10468	1/5/2016	Still in use	Monitoring Well/Gauging	841.49	844.31	25.21	8	2	23.50	818.0	8.50	23.50	10.0	25.0	831.5	816.5	15.00
MW-29	Geoprobe 3230 DT HSA	MW-10469	1/4/2016	Still in use	Monitoring Well/Gauging	852.07	852.20	15.02	8	2	15.25	836.8	5.00	15.00	5.0	15.0	847.1	837.1	10.00
MW-30	Geoprobe 3230 DT HSA	MW-10470	1/6/2016	Still in use	Monitoring Well/Gauging	841.21	841.28	14.56	8	2	15.25	826.0	5.00	15.00	5.0	15.0	836.2	826.2	10.00

Table 1. Well Construction Information
Plantation Pipe Line Company
Lewis Drive Release, Belton, South Carolina
Site ID #18693 "Kinder Morgan Belton Pipeline Release"

Location ID	Installation Method	Permit #	Date Installed	Date Abandoned	Purpose	Ground Surface Elevation (ft amsl)	TOC Elevation (ft amsl)	Measured Depth to Bottom (ft BTOC)	Bore Hole Diameter (in)	Well Dia (in)	Well Depth (ft bgs)	Bottom of Well (ft amsl)	Top of Screen or Open Borehole Interval (ft BTOC)	Bottom of Screen or Open Borehole Interval (ft BTOC)	Top of Screen or Open Borehole Interval (ft bgs)	Bottom of Screen or Open Borehole Interval (ft bgs)	Top of Screen or Open Borehole Interval (ft amsl)	Bottom of Screen or Open Borehole Interval (ft amsl)	Length of Screen or Open Borehole Interval (ft)
Recovery Wells																			
RW-01	HSA	MW-09978	1/28/2015	Still in use	Gauging/LNAPL Recovery	849.49	851.92	19.75	6.25	4	17	832.5	4.44	19.44	2.0	17.0	847.5	832.5	15
RW-02	HSA	MW-09978	1/29/2015	Still in use	Gauging/LNAPL Recovery	850.22	852.69	25.25	6.25	4	23	827.2	15.47	25.47	13.0	23.0	837.2	827.2	10
RW-03	HSA	MW-09978	1/29/2015	Still in use	Gauging/LNAPL Recovery	850.03	852.34	33.39	6.25	4	31.2	818.8	18.51	33.51	16.2	31.2	833.8	818.8	15
RW-04	HSA	MW-09978	1/29/2015	Still in use	Gauging/LNAPL Recovery	852.15	853.93	35.04	6.25	4	33	819.2	14.78	34.78	13.0	33.0	839.2	819.2	20
RW-05	HSA	MW-09978	1/30/2015	Still in use	Gauging/LNAPL Recovery	850.99	853.53	34.50	6.25	4	34.5	816.5	22.04	37.04	19.5	34.5	831.5	816.5	15
RW-06	HSA	MW-09978	1/30/2015	Still in use	Gauging/LNAPL Recovery	844.21	846.21	38.50	6.25	4	38.5	805.7	20.49	40.49	18.5	38.5	825.7	805.7	20
RW-07	HSA	MW-09978	2/2/2015	Still in use	Gauging/LNAPL Recovery	841.01	843.19	38.00	6.25	4	38	803.0	15.18	40.18	13.0	38.0	828.0	803.0	25
RW-08	HSA	MW-09978	2/2/2015	Still in use	Gauging/LNAPL Recovery	833.46	835.48	33.50	6.25	4	33.5	800.0	10.52	35.52	8.5	33.5	825.0	800.0	25
RW-09	HSA	MW-09978	2/3/2015	Still in use	Gauging/LNAPL Recovery	831.13	835.12	42.13	6.25	4	41.5	789.6	15.49	45.49	11.5	41.5	819.6	789.6	30
RW-10	HSA	MW-10006	2/4/2015	Still in use	Gauging/LNAPL Recovery	846.76	848.53	66.51	6.25	4	68.5	778.3	5.27	70.27	3.5	68.5	843.3	778.3	65
RW-11	HSA	MW-10006	2/4/2015	Still in use	Gauging/LNAPL Recovery	851.03	852.97	17.92	6.25	4	19.5	831.5	6.44	21.44	4.5	19.5	846.5	831.5	15
RW-12	HSA	MW-10006	2/5/2015	Still in use	Gauging/LNAPL Recovery	851.48	852.75	14.00	6.25	4	14	837.5	4.00	14.00	4.0	14.0	847.5	837.5	10
RW-13	HSA	MW-10006	2/5/2015	Still in use	Gauging/LNAPL Recovery	847.57	847.97	45.53	6.25	4	50	797.6	0.53	45.53	5.0	50.0	842.6	797.6	45
RW-14	HSA	MW-10006	2/6/2015	Still in use	Gauging/LNAPL Recovery	826.25	827.54	55.00	6.25	4	55	771.2	5.00	55.00	5.0	55.0	821.2	771.2	50
RW-15	HSA	MW-10006	2/10/2015	Still in use	Gauging/LNAPL Recovery	849.48	851.64	36.50	6.25	4	36.5	813.0	1.50	36.50	1.5	36.5	848.0	813.0	35
Recovery Sumps																			
RS-01	Trackhoe	MW-09978	12/29/2014	Still in use	Gauging/LNAPL Recovery	847.95	850.33	23.60	NA	4	21.21	826.7	4.39	23.60	2.0	21.2	845.9	826.7	19.21
RS-02	Trackhoe	MW-09978	12/29/2014	Still in use	Gauging/LNAPL Recovery	848.62	850.38	20.21	NA	4	18.45	830.2	3.76	20.21	2.0	18.4	846.6	830.2	16.45
RS-03	Trackhoe	MW-09978	12/30/2014	10/19/2015	Gauging/LNAPL Recovery	850.06	852.37	13.19	NA	4	10.89	839.2	4.30	13.19	2.0	10.9	848.1	839.2	8.89
RS-04	Trackhoe	MW-09978	12/30/2014	Still in use	Gauging/LNAPL Recovery	850.23	851.65	10.25	NA	4	8.83	841.4	3.42	10.25	2.0	8.8	848.2	841.4	6.83
RS-05	Trackhoe	MW-09978	12/31/2014	Still in use	Gauging/LNAPL Recovery	847.14	848.55	25.20	NA	4	23.79	823.3	3.41	25.20	2.0	23.8	845.1	823.3	21.79
RS-06	Trackhoe	MW-09978	12/31/2014	Still in use	Gauging/LNAPL Recovery	847.87	850.97	25.18	NA	4	22.09	825.8	5.09	25.18	2.0	22.1	845.9	825.8	20.09
RS-07	Trackhoe	MW-09978	12/31/2014	Still in use	Gauging/LNAPL Recovery	854.20	856.29	16.78	NA	4	14.69	839.5	4.09	16.78	2.0	14.7	852.2	839.5	12.69
RS-08	Trackhoe	MW-09978	12/31/2014	Still in use	Gauging/LNAPL Recovery	852.70	855.19	20.22	NA	4	17.72	835.0	4.50	20.22	2.0	17.7	850.7	835.0	15.72
RS-09	Trackhoe	MW-09978	1/7/2015	Still in use	Gauging/LNAPL Recovery	846.75	849.12	18.69	NA	4	16.33	830.4	4.37	18.69	2.0	16.3	844.8	830.4	14.33
RS-10	Trackhoe	MW-09978	1/7/2015	Still in use	Gauging/LNAPL Recovery	846.28	847.52	20.06	NA	4	18.82	827.5	3.24	20.06	2.0	18.8	844.3	827.5	16.82
RS-11	Trackhoe	MW-09978	1/7/2015	Still in use	Gauging/LNAPL Recovery	846.35	848.41	22.06	NA	4	19.99	826.4	4.07	22.06	2.0	20.0	844.3	826.4	17.99
RS-12	Trackhoe	MW-09978	1/7/2015	Still in use	Gauging/LNAPL Recovery	846.58	848.87	21.29	NA	4	19.00	827.6	4.29	21.29	2.0	19.0	844.6	827.6	17.00
RS-13	Trackhoe	MW-09978	1/8/2015	Still in use	Gauging/LNAPL Recovery	845.51	848.28	19.92	NA	4	17.14	828.4	4.15	19.92	1.4	17.1	844.1	828.4	15.77
RS-14	Trackhoe	MW-09978	1/8/2015	Still in use	Gauging/LNAPL Recovery	844.66	846.92	19.98	NA	4	17.68	827.0	4.26	19.93	2.0	17.7	842.7	827.0	15.68
RS-15	Trackhoe	MW-09978	1/8/2015	Still in use	Gauging/LNAPL Recovery	845.36	848.97	19.93	NA	4	16.31	829.0	5.62	19.93	2.0	16.3	843.4	829.0	14.31
RS-16	Trackhoe	MW-09978	1/8/2015	Still in use	Gauging/LNAPL Recovery	844.56	846.77	19.98	NA	4	17.77	826.8	4.21	19.98	2.0	17.8	842.6	826.8	15.77
RS-17	Trackhoe	MW-09978	1/8/2015	Still in use	Gauging/LNAPL Recovery	843.29	845.15	19.91	NA	4	18.05	825.2	3.86	19.91	2.0	18.0	841.3	825.2	16.05
RS-18	Trackhoe	MW-09978	1/8/2015	Still in use	Gauging/LNAPL Recovery	846.82	848.59	19.98	NA	4	18.21	828.6	3.77	19.98	2.0	18.2	844.8	828.6	16.21
RS-19	Trackhoe	MW-09978	1/21/2015	Still in use	Gauging/LNAPL Recovery	849.27	852.37	15.10	NA	4	12.00	837.3	5.10	15.10	2.0	12.0	847.3	837.3	10.00
RS-20	Trackhoe	MW-09978	3/19/2015	Still in use	Gauging/LNAPL Recovery	849.58	851.99	11.84	NA	4	9.91	839.7	3.93	11.84	2.0	9.9	847.6	839.7	7.91

Table 1. Well Construction Information

Plantation Pipe Line Company

Lewis Drive Release, Belton, South Carolina

Site ID #18693 "Kinder Morgan Belton Pipeline Release"

Location ID	Installation Method	Permit #	Date Installed	Date Abandoned	Purpose	Ground Surface Elevation (ft amsl)	TOC Elevation (ft amsl)	Measured Depth to Bottom (ft BTOC)	Bore Hole Diameter (in)	Well Dia (in)	Well Depth (ft bgs)	Bottom of Well (ft amsl)	Top of Screen or Open Borehole Interval (ft BTOC)	Bottom of Screen or Open Borehole Interval (ft BTOC)	Top of Screen or Open Borehole Interval (ft bgs)	Bottom of Screen or Open Borehole Interval (ft bgs)	Top of Screen or Open Borehole Interval (ft amsl)	Bottom of Screen or Open Borehole Interval (ft amsl)	Length of Screen or Open Borehole Interval (ft)
TW-76	DPT	MW-10006	2/4/2015	Still in use	Gauging	852.48	854.32	43.62	2.7	1	43	809.5	8.62	43.62	8.0	41.8	844.5	810.7	35
TW-77	DPT	MW-10006	2/4/2015	10/20/2015	Gauging	854.55	853.71	6.80	2.2	1	8.5	847.1	2.30	6.30	2.5	6.1	851.1	847.1	4
TW-78	DPT	MW-10006	2/4/2015	10/20/2015	Gauging	854.00	854.17	6.85	2.2	1	7	847.0	2.95	6.95	3.0	6.8	851.0	847.2	4
TW-79	DPT	MW-10006	2/4/2015	10/19/2015	Gauging	852.83	854.19	41.20	3.7	1	40	812.8	11.20	41.20	10.0	39.8	842.8	813.0	30
TW-80	DPT	MW-10006	2/5/2015	10/20/2015	Gauging	848.45	849.45	7.00	2.2	1	7	842.4	2.00	7.00	2.0	6.8	847.8	842.6	5
TW-81	DPT	MW-10006	2/5/2015	Still in use	Gauging	849.48	849.43	7.00	2.2	1	7	842.5	2.00	7.00	2.0	7.0	847.5	842.4	5
TW-82	DPT	MW-10006	2/5/2015	Still in use	Gauging	849.83	849.64	10.00	2.2	1	10	839.8	2.00	10.00	2.0	10.2	847.8	839.6	8
TW-83	DPT	MW-10006	2/5/2015	Still in use	Gauging	850.54	850.44	17.00	2.2	1	17	833.5	2.00	17.00	2.0	17.1	848.5	833.4	15
TW-84	DPT	MW-10006	2/5/2015	Still in use	Gauging	851.38	851.22	13.50	2.2	1	13.5	837.9	3.50	13.50	3.5	13.7	847.9	837.7	10
TW-85	DPT	MW-10006	2/5/2015	Still in use	Gauging	843.64	843.49	39.00	2.2	1	39	804.6	9.00	39.00	9.0	39.2	834.6	804.5	30
TW-86	DPT	MW-10006	2/5/2015	Still in use	Gauging	853.38	853.10	6.00	2.2	1	6	847.4	2.00	6.00	2.0	6.3	851.4	847.1	4
TW-87	DPT	MW-10006	2/5/2015	Still in use	Gauging	852.33	852.25	7.00	2.2	1	7	845.3	2.00	7.00	2.0	7.1	850.3	845.3	5
TW-88	DPT	MW-10006	2/5/2015	10/19/2015	Gauging	842.76	844.07	33.00	2.7	1	33	809.8	8.00	33.00	8.0	31.7	834.8	811.1	25
TW-89	DPT	MW-10006	2/5/2015	10/19/2015	Gauging	844.61	846.55	40.00	2.7	1	40	804.6	5.00	40.00	5.0	38.1	839.6	806.5	35
TW-90	DPT	MW-10006	2/6/2015	Still in use	Gauging	845.48	847.43	46.50	2.7	1	46.5	799.0	6.50	46.50	6.5	44.6	839.0	800.9	40
TW-91	DPT	MW-10006	2/6/2015	10/19/2015	Gauging	846.24	847.76	37.00	2.7	1	37	801.2	7.00	37.00	7.0	35.5	839.2	810.8	30
TW-92	DPT	MW-10006	2/10/2015	10/19/2015	Gauging	841.67	842.11	45.00	2.7	1	45	796.7	5.00	45.00	5.0	44.6	836.7	797.1	40
TW-93	DPT	MW-10006	2/10/2015	10/19/2015	Gauging	844.08	843.68	50.00	2.7	1	50	793.1	10.00	50.00	10.0	49.4	833.1	793.7	40
TW-94	DPT	MW-10006	2/10/2015	Still in use	Gauging	840.75	840.58	40.00	2.7	1	40	800.8	5.00	40.00	5.0	40.2	835.8	800.6	35
TW-95	DPT	MW-10006	2/10/2015	10/19/2015	Gauging	840.26	840.44	36.00	2.7	1	36	795.0	15.00	45.00	15.0	44.8	829.0	795.4	40
TW-96	DPT	MW-10006	2/11/2015	Still in use	Gauging	840.52	840.40	30.00	2.7	1	30	810.5	5.00	30.00	5.0	30.1	835.5	810.4	25
TW-97	DPT	MW-10006	2/11/2015	10/19/2015	Gauging	841.93	844.77	42.00	2.7	1	42	793.4	12.00	42.00	12.0	38.6	829.4	802.8	30
TW-98	DPT	MW-10006	2/11/2015	10/20/2015	Gauging	847.68	847.99	27.00	2.7	1	27	820.7	3.00	27.00	3.0	26.7	845.7	821.0	25

Notes:

¹ Coordinates provided in South Carolina State Plane Coordinate System, North American Datum of 1983 (NAD83, 2011).

(Ground rows indicate wells that have been abandoned)

amsl = above mean sea level relative to North American Vertical Datum of 1988 (NAVD88). Benchmark is 34 deg 49'44.27745" N, 82 deg 22'15.72744" W (NAD83, 2011), elevation 929.1 ft NAVD88

bgs = below ground surface

BTOC = below top of casing

DPT = direct push

ft = feet

HSA = hollow-stem auger

in = inches

NA = not applicable

NS = location not surveyed

RNE = Refusal not encountered

TOC = top of casing

Table 2. Groundwater Elevation and Product Thickness Data

Plantation Pipe Line Company

Lewis Drive Release, Belton, South Carolina

Site ID #18693 "Kinder Morgan Belton Pipeline Release"

Location ID	Date	Depth to Product (ft BTOC)	Depth to Water (ft BTOC)	Product Thickness (ft)	Top of Casing Elevation (ft amsl)	Groundwater Elevation (ft amsl)	Corrected ¹ Groundwater Elevation (ft amsl)
MW-01					853.07		
	2/29/2016	-	3.32	-		849.75	-
	2/26/2016	-	3.36	-		849.71	-
	2/22/2016	-	4.44	-		848.63	-
	2/19/2016	4.27	4.28	0.01		848.79	848.79
	2/16/2016	-	3.55	-		849.52	-
	2/12/2016	-	3.93	-		849.14	-
	2/8/2016	-	3.36	-		849.71	-
	2/5/2016	-	3.35	-		849.72	-
	2/1/2016	-	3.70	-		849.37	-
MW-01B					852.99		
	2/29/2016	-	4.45	-		848.54	-
	2/26/2016	-	4.42	-		848.57	-
	2/22/2016	-	4.65	-		848.34	-
	2/19/2016	-	4.63	-		848.36	-
	2/16/2016	-	4.70	-		848.29	-
	2/12/2016	-	4.81	-		848.18	-
	2/8/2016	-	5.05	-		847.94	-
	2/5/2016	-	5.39	-		847.60	-
	2/1/2016	-	5.94	-		847.05	-
MW-02					841.04		
	2/29/2016	-	1.42	-		839.62	-
	2/26/2016	-	1.45	-		839.59	-
	2/22/2016	-	1.36	-		839.68	-
	2/19/2016	1.64	1.68	0.04		839.36	839.39
	2/16/2016	-	1.41	-		839.63	-
	2/12/2016	-	1.40	-		839.64	-
	2/8/2016	-	1.30	-		839.74	-
	2/5/2016	-	1.40	-		839.64	-
	2/1/2016	-	1.41	-		839.63	-
MW-02B					841.18		
	2/29/2016	-	1.45	-		839.73	-
	2/26/2016	-	1.31	-		839.87	-
	2/22/2016	-	2.00	-		839.18	-
	2/19/2016	-	2.15	-		839.03	-
	2/16/2016	-	2.02	-		839.16	-
	2/12/2016	-	1.59	-		839.59	-
	2/8/2016	-	1.38	-		839.80	-
	2/5/2016	-	1.77	-		839.41	-
	2/1/2016	-	1.79	-		839.39	-
MW-03					838.36		
	2/29/2016	-	1.73	-		836.63	-
	2/26/2016	-	1.80	-		836.56	-
	2/22/2016	-	1.50	-		836.86	-
	2/19/2016	-	1.88	-		836.48	-
	2/16/2016	-	1.62	-		836.74	-
	2/12/2016	-	1.71	-		836.65	-
	2/8/2016	-	1.53	-		836.83	-
	2/5/2016	-	1.78	-		836.58	-
	2/1/2016	-	1.64	-		836.72	-

Table 2. Groundwater Elevation and Product Thickness Data

Plantation Pipe Line Company

Lewis Drive Release, Belton, South Carolina

Site ID #18693 "Kinder Morgan Belton Pipeline Release"

Location ID	Date	Depth to Product (ft BTOC)	Depth to Water (ft BTOC)	Product Thickness (ft)	Top of Casing Elevation (ft amsl)	Groundwater Elevation (ft amsl)	Corrected ¹ Groundwater Elevation (ft amsl)
MW-04					844.42		
	2/29/2016	-	3.05	-		841.37	-
	2/26/2016	-	3.02	-		841.40	-
	2/22/2016	-	3.93	-		840.49	-
	2/19/2016	-	4.34	-		840.08	-
	2/16/2016	-	4.04	-		840.38	-
	2/12/2016	-	3.29	-		841.13	-
	2/8/2016	-	3.11	-		841.31	-
	2/5/2016	-	3.75	-		840.67	-
	2/1/2016	-	3.80	-		840.62	-
MW-05					851.11		
	2/29/2016	-	6.27	-		844.84	-
	2/26/2016	-	6.22	-		844.89	-
	2/22/2016	-	6.34	-		844.77	-
	2/19/2016	-	6.88	-		844.23	-
	2/16/2016	-	6.49	-		844.62	-
	2/12/2016	-	6.05	-		845.06	-
	2/8/2016	-	5.92	-		845.19	-
	2/5/2016	-	6.10	-		845.01	-
	2/1/2016	-	6.42	-		844.69	-
MW-06					852.92		
	2/29/2016	-	7.00	-		845.92	-
	2/26/2016	-	6.96	-		845.96	-
	2/22/2016	-	7.18	-		845.74	-
	2/19/2016	-	7.21	-		845.71	-
	2/16/2016	-	6.91	-		846.01	-
	2/12/2016	-	7.00	-		845.92	-
	2/8/2016	-	6.87	-		846.05	-
	2/5/2016	-	6.71	-		846.21	-
	2/1/2016	-	7.40	-		845.52	-
MW-07					853.02		
	2/29/2016	-	6.71	-		846.31	-
	2/26/2016	-	6.67	-		846.35	-
	2/22/2016	-	7.06	-		845.96	-
	2/19/2016	-	7.11	-		845.91	-
	2/16/2016	-	6.85	-		846.17	-
	2/12/2016	-	6.92	-		846.10	-
	2/8/2016	-	6.75	-		846.27	-
	2/5/2016	-	6.60	-		846.42	-
	2/1/2016	-	7.15	-		845.87	-
MW-08					844.72		
	2/29/2016	-	2.56	-		842.16	-
	2/26/2016	-	2.63	-		842.09	-
	2/22/2016	-	4.20	-		840.52	-
	2/19/2016	-	4.31	-		840.41	-
	2/16/2016	-	4.22	-		840.50	-
	2/12/2016	-	3.11	-		841.61	-
	2/8/2016	-	2.90	-		841.82	-
	2/5/2016	-	3.20	-		841.52	-
	2/1/2016	-	3.60	-		841.12	-

Table 2. Groundwater Elevation and Product Thickness Data

Plantation Pipe Line Company

Lewis Drive Release, Belton, South Carolina

Site ID #18693 "Kinder Morgan Belton Pipeline Release"

Location ID	Date	Depth to Product (ft BTOC)	Depth to Water (ft BTOC)	Product Thickness (ft)	Top of Casing Elevation (ft amsl)	Groundwater Elevation (ft amsl)	Corrected ¹ Groundwater Elevation (ft amsl)
MW-09					843.63		
	2/29/2016	0.80	4.16	3.36		839.47	841.92
	2/26/2016	0.65	3.95	3.30		839.68	842.09
	2/22/2016	1.00	4.30	3.30		839.33	841.74
	2/19/2016	-	1.38	-		842.25	-
	2/16/2016	1.02	4.50	3.48		839.13	841.67
	2/12/2016	1.06	4.21	3.15		839.42	841.72
	2/8/2016	0.75	4.10	3.35		839.53	841.98
	2/5/2016	1.07	4.49	3.42		839.14	841.64
	2/1/2016	1.10	4.54	3.44		839.09	841.60
MW-10					845.41		
	2/29/2016	-	5.00	-		840.41	-
	2/26/2016	-	4.93	-		840.48	-
	2/22/2016	-	4.44	-		840.97	-
	2/19/2016	-	5.90	-		839.51	-
	2/16/2016	-	5.50	-		839.91	-
	2/12/2016	-	5.15	-		840.26	-
	2/8/2016	-	4.90	-		840.51	-
	2/5/2016	-	5.00	-		840.41	-
	2/1/2016	-	5.45	-		839.96	-
MW-11					855.63		
	2/29/2016	-	22.00	-		833.63	-
	2/26/2016	-	22.23	-		833.40	-
	2/22/2016	-	22.28	-		833.35	-
	2/19/2016	-	22.44	-		833.19	-
	2/16/2016	-	22.15	-		833.48	-
	2/12/2016	-	22.24	-		833.39	-
	2/8/2016	-	22.24	-		833.39	-
	2/5/2016	-	22.62	-		833.01	-
	2/1/2016	-	22.65	-		832.98	-
MW-12					834.53		
	2/29/2016	9.50	10.05	0.55		824.48	824.88
	2/26/2016	9.43	10.00	0.57		824.53	824.95
	2/22/2016	9.80	10.54	0.74		823.99	824.53
	2/19/2016	9.88	10.64	0.76		823.89	824.45
	2/16/2016	9.64	10.30	0.66		824.23	824.71
	2/12/2016	9.60	10.30	0.70		824.23	824.74
	2/8/2016	9.35	9.89	0.54		824.64	825.04
	2/5/2016	9.43	9.98	0.55		824.55	824.95
	2/1/2016	9.75	10.46	0.71		824.07	824.59
MW-12B					834.98		
	2/29/2016	-	9.93	-		825.05	-
	2/26/2016	-	9.90	-		825.08	-
	2/19/2016	-	-	-		834.98	-

Table 2. Groundwater Elevation and Product Thickness Data

Plantation Pipe Line Company

Lewis Drive Release, Belton, South Carolina

Site ID #18693 "Kinder Morgan Belton Pipeline Release"

Location ID	Date	Depth to Product (ft BTOC)	Depth to Water (ft BTOC)	Product Thickness (ft)	Top of Casing Elevation (ft amsl)	Groundwater Elevation (ft amsl)	Corrected ¹ Groundwater Elevation (ft amsl)
MW-13					848.84		
	2/29/2016	-	14.30	-		834.54	-
	2/26/2016	-	14.51	-		834.33	-
	2/22/2016	-	14.43	-		834.41	-
	2/19/2016	-	14.42	-		834.42	-
	2/16/2016	-	14.50	-		834.34	-
	2/12/2016	-	14.63	-		834.21	-
	2/8/2016	-	14.46	-		834.38	-
	2/5/2016	-	14.53	-		834.31	-
	2/1/2016	-	14.92	-		833.92	-
MW-13B					849.82		
	2/29/2016	-	15.22	-		834.60	-
	2/26/2016	-	15.42	-		834.40	-
	2/19/2016	-	15.71	-		834.11	-
MW-14					838.70		
	2/29/2016	-	11.02	-		827.68	-
	2/26/2016	-	11.06	-		827.64	-
	2/22/2016	-	11.28	-		827.42	-
	2/19/2016	-	11.88	-		826.82	-
	2/16/2016	-	11.30	-		827.40	-
	2/12/2016	-	10.95	-		827.75	-
	2/8/2016	-	10.75	-		827.95	-
	2/5/2016	-	10.62	-		828.08	-
	2/1/2016	-	11.35	-		827.35	-
MW-15					831.03		
	2/29/2016	-	9.42	-		821.61	-
	2/26/2016	-	9.30	-		821.73	-
	2/22/2016	-	9.19	-		821.84	-
	2/19/2016	-	9.32	-		821.71	-
	2/16/2016	-	9.65	-		821.38	-
	2/12/2016	-	9.60	-		821.43	-
	2/8/2016	-	9.35	-		821.68	-
	2/5/2016	-	9.33	-		821.70	-
	2/1/2016	-	9.62	-		821.41	-
MW-15B					831.29		
	2/29/2016	-	14.91	-		816.38	-
	2/26/2016	-	14.83	-		816.46	-
	2/22/2016	-	14.96	-		816.33	-
	2/19/2016	-	15.19	-		816.10	-
	2/16/2016	-	15.12	-		816.17	-
	2/12/2016	-	14.98	-		816.31	-
	2/8/2016	-	14.88	-		816.41	-
	2/5/2016	-	14.90	-		816.39	-
	2/1/2016	-	16.09	-		815.20	-

Table 2. Groundwater Elevation and Product Thickness Data

Plantation Pipe Line Company

Lewis Drive Release, Belton, South Carolina

Site ID #18693 "Kinder Morgan Belton Pipeline Release"

Location ID	Date	Depth to Product (ft BTOC)	Depth to Water (ft BTOC)	Product Thickness (ft)	Top of Casing Elevation (ft amsl)	Groundwater Elevation (ft amsl)	Corrected ¹ Groundwater Elevation (ft amsl)
MW-16					847.67		
	2/29/2016	4.10	4.18	0.08		843.49	843.54
	2/26/2016	4.32	4.41	0.09		843.26	843.32
	2/22/2016	4.25	4.36	0.11		843.31	843.39
	2/19/2016	4.32	4.44	0.12		843.23	843.31
	2/16/2016	4.25	4.34	0.09		843.33	843.39
	2/12/2016	4.58	4.62	0.04		843.05	843.07
	2/8/2016	4.45	4.50	0.05		843.17	843.20
	2/5/2016	4.84	4.94	0.10		842.73	842.80
	2/1/2016	4.86	4.95	0.09		842.72	842.78
MW-17					855.35		
	2/29/2016	-	8.55	-		846.80	-
	2/26/2016	-	8.61	-		846.74	-
	2/22/2016	-	8.77	-		846.58	-
	2/19/2016	-	8.86	-		846.49	-
	2/16/2016	-	8.65	-		846.70	-
	2/12/2016	-	8.79	-		846.56	-
	2/8/2016	-	8.60	-		846.75	-
	2/5/2016	-	8.81	-		846.54	-
	2/1/2016	-	8.88	-		846.47	-
MW-17B					855.37		
	2/29/2016	-	9.23	-		846.14	-
	2/26/2016	-	9.45	-		845.92	-
	2/19/2016	-	9.52	-		845.85	-
MW-18					846.89		
	2/29/2016	7.45	9.84	2.39		837.05	838.79
	2/26/2016	7.37	9.95	2.58		836.94	838.82
	2/22/2016	7.48	10.21	2.73		836.68	838.67
	2/19/2016	7.52	10.28	2.76		836.61	838.62
	2/16/2016	7.71	10.21	2.50		836.68	838.50
	2/12/2016	7.74	10.23	2.49		836.66	838.47
	2/8/2016	7.60	10.10	2.50		836.79	838.61
	2/5/2016	7.76	10.21	2.45		836.68	838.46
	2/1/2016	7.75	10.35	2.60		836.54	838.43
MW-19					853.94		
	2/29/2016	-	4.54	-		849.40	-
	2/26/2016	-	3.97	-		849.97	-
	2/22/2016	-	6.12	-		847.82	-
	2/19/2016	-	6.37	-		847.57	-
	2/16/2016	-	5.80	-		848.14	-
	2/12/2016	-	4.47	-		849.47	-
	2/8/2016	-	4.30	-		849.64	-
	2/5/2016	-	4.93	-		849.01	-
	2/1/2016	-	5.53	-		848.41	-

Table 2. Groundwater Elevation and Product Thickness Data

Plantation Pipe Line Company

Lewis Drive Release, Belton, South Carolina

Site ID #18693 "Kinder Morgan Belton Pipeline Release"

Location ID	Date	Depth to Product (ft BTOC)	Depth to Water (ft BTOC)	Product Thickness (ft)	Top of Casing Elevation (ft amsl)	Groundwater Elevation (ft amsl)	Corrected ¹ Groundwater Elevation (ft amsl)
MW-20					852.89		
	2/29/2016	5.45	9.11	3.66		843.78	846.45
	2/26/2016	5.50	9.30	3.80		843.59	846.36
	2/22/2016	6.16	9.31	3.15		843.58	845.87
	2/19/2016	6.25	9.40	3.15		843.49	845.78
	2/16/2016	5.65	9.03	3.38		843.86	846.32
	2/12/2016	5.80	9.04	3.24		843.85	846.21
	2/8/2016	5.60	8.89	3.29		844.00	846.40
	2/5/2016	5.66	9.40	3.74		843.49	846.22
	2/1/2016	5.72	9.46	3.74		843.43	846.16
MW-21					855.77		
	2/29/2016	-	10.21	-		845.56	-
	2/26/2016	-	10.29	-		845.48	-
	2/22/2016	-	10.55	-		845.22	-
	2/19/2016	-	10.63	-		845.14	-
	2/16/2016	-	10.30	-		845.47	-
	2/12/2016	-	10.15	-		845.62	-
	2/8/2016	-	10.05	-		845.72	-
	2/5/2016	-	10.44	-		845.33	-
	2/1/2016	-	10.50	-		845.27	-
MW-22					854.60		
	2/29/2016	-	3.78	-		850.82	-
	2/26/2016	-	3.80	-		850.80	-
	2/22/2016	-	4.92	-		849.68	-
	2/19/2016	-	5.02	-		849.58	-
	2/16/2016	-	4.35	-		850.25	-
	2/12/2016	-	4.28	-		850.32	-
	2/8/2016	-	4.15	-		850.45	-
	2/5/2016	-	4.25	-		850.35	-
	2/1/2016	-	4.62	-		849.98	-
MW-23					849.57		
	2/29/2016	-	4.32	-		845.25	-
	2/26/2016	-	4.35	-		845.22	-
	2/22/2016	-	4.70	-		844.87	-
	2/19/2016	-	4.76	-		844.81	-
	2/16/2016	-	4.30	-		845.27	-
	2/12/2016	-	4.53	-		845.04	-
	2/8/2016	-	4.22	-		845.35	-
	2/5/2016	-	4.35	-		845.22	-
	2/1/2016	-	4.57	-		845.00	-
MW-23B					849.69		
	2/29/2016	-	4.70	-		844.99	-
	2/26/2016	-	4.76	-		844.93	-
	2/22/2016	-	4.98	-		844.71	-
	2/19/2016	-	5.00	-		844.69	-
	2/16/2016	-	5.38	-		844.31	-
	2/12/2016	-	5.12	-		844.57	-
	2/8/2016	-	5.19	-		844.50	-
	2/5/2016	-	5.42	-		844.27	-
	2/1/2016	-	5.68	-		844.01	-

Table 2. Groundwater Elevation and Product Thickness Data

Plantation Pipe Line Company

Lewis Drive Release, Belton, South Carolina

Site ID #18693 "Kinder Morgan Belton Pipeline Release"

Location ID	Date	Depth to Product (ft BTOC)	Depth to Water (ft BTOC)	Product Thickness (ft)	Top of Casing Elevation (ft amsl)	Groundwater Elevation (ft amsl)	Corrected ¹ Groundwater Elevation (ft amsl)
MW-24					817.92		
	2/29/2016	-	4.40	-		813.52	-
	2/26/2016	-	4.41	-		813.51	-
	2/22/2016	-	4.46	-		813.46	-
	2/19/2016	-	4.52	-		813.40	-
	2/16/2016	-	4.50	-		813.42	-
	2/12/2016	-	4.59	-		813.33	-
	2/8/2016	-	4.51	-		813.41	-
	2/5/2016	-	4.57	-		813.35	-
	2/1/2016	-	4.59	-		813.33	-
MW-24B					818.72		
	2/29/2016	-	5.25	-		813.47	-
	2/26/2016	-	5.21	-		813.51	-
	2/22/2016	-	5.29	-		813.43	-
	2/19/2016	-	5.35	-		813.37	-
	2/16/2016	-	5.31	-		813.41	-
	2/12/2016	-	5.37	-		813.35	-
	2/8/2016	-	5.29	-		813.43	-
	2/5/2016	-	5.38	-		813.34	-
	2/1/2016	-	5.39	-		813.33	-
MW-25					826.18		
	2/29/2016	-	6.60	-		819.58	-
	2/26/2016	-	6.54	-		819.64	-
	2/19/2016	-	6.73	-		819.45	-
MW-25B					823.81		
	2/29/2016	-	-	-		823.81	-
	2/26/2016	-	0.15	-		823.66	-
	2/19/2016	-	0.40	-		823.41	-
MW-26					847.56		
	2/29/2016	-	0.92	-		846.64	-
	2/26/2016	-	0.97	-		846.59	-
	2/19/2016	-	1.25	-		846.31	-
MW-26B					847.81		
	2/29/2016	-	0.47	-		847.34	-
	2/26/2016	-	0.50	-		847.31	-
	2/19/2016	-	2.10	-		845.71	-
MW-27					854.11		
	2/29/2016	-	18.50	-		835.61	-
	2/26/2016	-	18.65	-		835.46	-
	2/19/2016	-	18.62	-		835.49	-
MW-28					844.31		
	2/29/2016	-	18.35	-		825.96	-
	2/26/2016	-	18.34	-		825.97	-
	2/19/2016	-	18.81	-		825.50	-
MW-29					852.20		
	2/29/2016	-	2.00	-		850.20	-
	2/26/2016	-	2.10	-		850.10	-
	2/19/2016	-	2.89	-		849.31	-

Table 2. Groundwater Elevation and Product Thickness Data

Plantation Pipe Line Company

Lewis Drive Release, Belton, South Carolina

Site ID #18693 "Kinder Morgan Belton Pipeline Release"

Location ID	Date	Depth to Product (ft BTOC)	Depth to Water (ft BTOC)	Product Thickness (ft)	Top of Casing Elevation (ft amsl)	Groundwater Elevation (ft amsl)	Corrected ¹ Groundwater Elevation (ft amsl)
MW-30					841.28		
	2/29/2016	-	6.58	-		834.70	-
	2/26/2016	-	6.39	-		834.89	-
	2/19/2016	-	7.32	-		833.96	-
RS-01					850.33		
	2/29/2016	5.72	5.82	0.10		844.51	844.59
	2/26/2016	5.95	6.13	0.18		844.20	844.33
	2/22/2016	6.45	6.67	0.22		843.66	843.82
	2/19/2016	6.52	6.70	0.18		843.63	843.76
	2/16/2016	6.18	6.36	0.18		843.97	844.10
	2/12/2016	6.50	6.60	0.10		843.73	843.81
	2/8/2016	5.91	6.10	0.19		844.23	844.37
	2/5/2016	6.30	6.60	0.30		843.73	843.95
	2/1/2016	6.43	6.89	0.46		843.44	843.78
RS-02					850.38		
	2/29/2016	4.96	5.10	0.14		845.28	845.38
	2/26/2016	5.19	5.32	0.13		845.06	845.15
	2/22/2016	5.74	5.82	0.08		844.56	844.61
	2/19/2016	5.84	5.93	0.09		844.45	844.51
	2/16/2016	5.51	5.64	0.13		844.74	844.83
	2/12/2016	5.42	5.60	0.18		844.78	844.91
	2/8/2016	5.04	5.21	0.17		845.17	845.29
	2/5/2016	5.42	5.63	0.21		844.75	844.90
	2/1/2016	5.65	5.80	0.15		844.58	844.69
RS-04					851.65		
	2/29/2016	-	4.60	-		847.05	-
	2/26/2016	-	4.73	-		846.92	-
	2/22/2016	-	5.33	-		846.32	-
	2/19/2016	-	5.40	-		846.25	-
	2/16/2016	-	4.97	-		846.68	-
	2/12/2016	-	4.75	-		846.90	-
	2/8/2016	-	4.36	-		847.29	-
	2/5/2016	-	4.55	-		847.10	-
	2/1/2016	-	4.92	-		846.73	-
RS-05					848.55		
	2/29/2016	4.98	5.20	0.22		843.35	843.51
	2/26/2016	5.34	5.37	0.03		843.18	843.20
	2/22/2016	-	5.66	-		842.89	-
	2/19/2016	5.74	5.75	0.01		842.80	842.80
	2/16/2016	5.37	5.48	0.11		843.07	843.15
	2/12/2016	5.49	5.61	0.12		842.94	843.03
	2/8/2016	5.35	5.51	0.16		843.04	843.15
	2/5/2016	5.84	6.00	0.16		842.55	842.66
	2/1/2016	5.94	6.00	0.06		842.55	842.59

Table 2. Groundwater Elevation and Product Thickness Data

Plantation Pipe Line Company

Lewis Drive Release, Belton, South Carolina

Site ID #18693 "Kinder Morgan Belton Pipeline Release"

Location ID	Date	Depth to Product (ft BTOC)	Depth to Water (ft BTOC)	Product Thickness (ft)	Top of Casing Elevation (ft amsl)	Groundwater Elevation (ft amsl)	Corrected ¹ Groundwater Elevation (ft amsl)
RS-06					850.97		
	2/29/2016	6.19	6.55	0.36		844.42	844.68
	2/26/2016	6.52	6.75	0.23		844.22	844.39
	2/22/2016	6.85	6.91	0.06		844.06	844.10
	2/19/2016	6.97	7.06	0.09		843.91	843.97
	2/16/2016	6.63	6.82	0.19		844.15	844.29
	2/12/2016	6.12	6.86	0.74		844.11	844.65
	2/8/2016	6.50	6.81	0.31		844.16	844.38
	2/5/2016	6.99	7.18	0.19		843.79	843.93
	2/1/2016	7.10	7.20	0.10		843.77	843.84
RS-07					856.29		
	2/29/2016	8.19	8.28	0.09		848.01	848.07
	2/26/2016	8.26	8.39	0.13		847.90	847.99
	2/22/2016	8.80	8.92	0.12		847.37	847.46
	2/19/2016	9.01	9.10	0.09		847.19	847.25
	2/16/2016	8.44	8.52	0.08		847.77	847.83
	2/12/2016	8.50	8.60	0.10		847.69	847.76
	2/8/2016	7.79	7.84	0.05		848.45	848.49
	2/5/2016	8.25	8.35	0.10		847.94	848.01
	2/1/2016	8.46	8.55	0.09		847.74	847.80
RS-08					855.19		
	2/29/2016	-	8.12	-		847.07	-
	2/26/2016	-	8.22	-		846.97	-
	2/22/2016	-	8.64	-		846.55	-
	2/19/2016	-	8.89	-		846.30	-
	2/16/2016	-	8.25	-		846.94	-
	2/12/2016	-	8.45	-		846.74	-
	2/8/2016	-	7.80	-		847.39	-
	2/5/2016	-	8.30	-		846.89	-
	2/1/2016	-	8.44	-		846.75	-
RS-09					849.12		
	2/29/2016	-	7.03	-		842.09	-
	2/26/2016	-	4.60	-		844.52	-
	2/22/2016	-	7.67	-		841.45	-
	2/19/2016	-	7.75	-		841.37	-
	2/16/2016	-	7.36	-		841.76	-
	2/12/2016	-	7.50	-		841.62	-
	2/8/2016	-	7.60	-		841.52	-
	2/5/2016	-	7.75	-		841.37	-
	2/1/2016	-	7.76	-		841.36	-
RS-10					847.52		
	2/29/2016	-	4.34	-		843.18	-
	2/26/2016	-	7.23	-		840.29	-
	2/22/2016	-	4.84	-		842.68	-
	2/19/2016	-	4.94	-		842.58	-
	2/16/2016	-	4.64	-		842.88	-
	2/12/2016	-	4.80	-		842.72	-
	2/8/2016	-	5.01	-		842.51	-
	2/5/2016	-	5.15	-		842.37	-
	2/1/2016	-	5.28	-		842.24	-

Table 2. Groundwater Elevation and Product Thickness Data

Plantation Pipe Line Company

Lewis Drive Release, Belton, South Carolina

Site ID #18693 "Kinder Morgan Belton Pipeline Release"

Location ID	Date	Depth to Product (ft BTOC)	Depth to Water (ft BTOC)	Product Thickness (ft)	Top of Casing Elevation (ft amsl)	Groundwater Elevation (ft amsl)	Corrected ¹ Groundwater Elevation (ft amsl)
RS-11					848.41		
	2/29/2016	-	4.96	-		843.45	-
	2/26/2016	-	5.22	-		843.19	-
	2/22/2016	-	5.40	-		843.01	-
	2/19/2016	-	5.45	-		842.96	-
	2/16/2016	-	5.25	-		843.16	-
	2/12/2016	-	5.40	-		843.01	-
	2/8/2016	-	5.67	-		842.74	-
	2/5/2016	-	5.80	-		842.61	-
	2/1/2016	-	5.89	-		842.52	-
RS-12					848.87		
	2/29/2016	5.42	5.43	0.01		843.44	843.45
	2/26/2016	-	5.70	-		843.17	-
	2/22/2016	-	5.88	-		842.99	-
	2/19/2016	-	5.95	-		842.92	-
	2/16/2016	-	5.72	-		843.15	-
	2/12/2016	-	5.82	-		843.05	-
	2/8/2016	-	6.08	-		842.79	-
	2/5/2016	-	6.26	-		842.61	-
	2/1/2016	-	6.60	-		842.27	-
RS-13					848.28		
	2/29/2016	-	5.97	-		842.31	-
	2/26/2016	-	5.70	-		842.58	-
	2/22/2016	-	7.32	-		840.96	-
	2/19/2016	-	7.45	-		840.83	-
	2/16/2016	-	7.10	-		841.18	-
	2/12/2016	-	6.78	-		841.50	-
	2/8/2016	-	6.02	-		842.26	-
	2/5/2016	-	6.04	-		842.24	-
	2/1/2016	-	7.17	-		841.11	-
RS-14					846.92		
	2/29/2016	-	4.10	-		842.82	-
	2/26/2016	-	3.97	-		842.95	-
	2/22/2016	-	4.60	-		842.32	-
	2/19/2016	-	4.66	-		842.26	-
	2/16/2016	-	4.50	-		842.42	-
	2/12/2016	-	4.45	-		842.47	-
	2/8/2016	-	4.22	-		842.70	-
	2/5/2016	-	4.26	-		842.66	-
	2/1/2016	-	4.65	-		842.27	-
RS-15					848.97		
	2/29/2016	-	5.96	-		843.01	-
	2/26/2016	-	5.90	-		843.07	-
	2/22/2016	-	6.30	-		842.67	-
	2/19/2016	-	6.40	-		842.57	-
	2/16/2016	-	6.34	-		842.63	-
	2/12/2016	-	6.30	-		842.67	-
	2/8/2016	-	6.14	-		842.83	-
	2/5/2016	-	6.20	-		842.77	-
	2/1/2016	-	6.51	-		842.46	-

Table 2. Groundwater Elevation and Product Thickness Data

Plantation Pipe Line Company

Lewis Drive Release, Belton, South Carolina

Site ID #18693 "Kinder Morgan Belton Pipeline Release"

Location ID	Date	Depth to Product (ft BTOC)	Depth to Water (ft BTOC)	Product Thickness (ft)	Top of Casing Elevation (ft amsl)	Groundwater Elevation (ft amsl)	Corrected ¹ Groundwater Elevation (ft amsl)
RS-16					846.77		
	2/29/2016	-	4.35	-		842.42	-
	2/26/2016	-	4.18	-		842.59	-
	2/22/2016	-	4.91	-		841.86	-
	2/19/2016	-	4.98	-		841.79	-
	2/16/2016	-	4.90	-		841.87	-
	2/12/2016	-	4.75	-		842.02	-
	2/8/2016	-	4.28	-		842.49	-
	2/5/2016	-	4.30	-		842.47	-
	2/1/2016	-	4.75	-		842.02	-
RS-17					845.15		
	2/29/2016	-	3.68	-		841.47	-
	2/26/2016	-	3.43	-		841.72	-
	2/22/2016	-	4.14	-		841.01	-
	2/19/2016	-	4.23	-		840.92	-
	2/16/2016	-	4.02	-		841.13	-
	2/12/2016	-	4.08	-		841.07	-
	2/8/2016	-	3.35	-		841.80	-
	2/5/2016	-	3.38	-		841.77	-
	2/1/2016	-	3.92	-		841.23	-
RS-18					848.59		
	2/29/2016	-	5.91	-		842.68	-
	2/26/2016	-	5.95	-		842.64	-
	2/22/2016	-	6.68	-		841.91	-
	2/19/2016	-	6.76	-		841.83	-
	2/16/2016	-	6.27	-		842.32	-
	2/12/2016	-	6.40	-		842.19	-
	2/8/2016	-	6.15	-		842.44	-
	2/5/2016	-	6.20	-		842.39	-
	2/1/2016	-	7.81	-		840.78	-
RS-19					852.37		
	2/29/2016	-	2.71	-		849.66	-
	2/26/2016	-	2.70	-		849.67	-
	2/22/2016	-	3.99	-		848.38	-
	2/19/2016	-	3.81	-		848.56	-
	2/16/2016	-	3.00	-		849.37	-
	2/12/2016	-	2.68	-		849.69	-
	2/8/2016	-	2.55	-		849.82	-
	2/5/2016	-	7.02	-		845.35	-
	2/1/2016	-	2.90	-		849.47	-
RS-20					851.99		
	2/29/2016	-	3.95	-		848.04	-
	2/26/2016	-	3.65	-		848.34	-
	2/22/2016	-	3.50	-		848.49	-
	2/19/2016	-	4.54	-		847.45	-
	2/16/2016	-	4.30	-		847.69	-
	2/12/2016	-	4.29	-		847.70	-
	2/8/2016	-	3.72	-		848.27	-
	2/5/2016	-	3.54	-		848.45	-
	2/1/2016	-	4.20	-		847.79	-

Table 2. Groundwater Elevation and Product Thickness Data

Plantation Pipe Line Company

Lewis Drive Release, Belton, South Carolina

Site ID #18693 "Kinder Morgan Belton Pipeline Release"

Location ID	Date	Depth to Product (ft BTOC)	Depth to Water (ft BTOC)	Product Thickness (ft)	Top of Casing Elevation (ft amsl)	Groundwater Elevation (ft amsl)	Corrected ¹ Groundwater Elevation (ft amsl)
RT-1A					856.21		
	2/29/2016	9.80	10.04	0.24		846.17	846.35
	2/26/2016	9.90	10.13	0.23		846.08	846.25
	2/22/2016	10.24	10.55	0.31		845.66	845.89
	2/19/2016	10.43	10.75	0.32		845.46	845.69
	2/16/2016	9.86	10.12	0.26		846.09	846.28
	2/12/2016	10.09	10.40	0.31		845.81	846.04
	2/8/2016	9.60	9.70	0.10		846.51	846.58
	2/5/2016	9.97	10.25	0.28		845.96	846.17
2/1/2016	10.12	10.35	0.23		845.86	846.03	
RT-1B					857.30		
	2/29/2016	10.81	11.10	0.29		846.20	846.41
	2/26/2016	10.91	11.21	0.30		846.09	846.30
	2/22/2016	11.26	11.55	0.29		845.75	845.96
	2/19/2016	11.48	11.73	0.25		845.57	845.75
	2/16/2016	10.90	11.16	0.26		846.14	846.32
	2/12/2016	11.12	11.40	0.28		845.90	846.10
	2/8/2016	10.61	10.85	0.24		846.45	846.62
	2/5/2016	11.00	11.30	0.30		846.00	846.21
2/1/2016	11.15	11.43	0.28		845.87	846.07	
RT-1C					857.02		
	2/29/2016	10.57	10.85	0.28		846.17	846.37
	2/26/2016	10.65	10.95	0.30		846.07	846.29
	2/22/2016	11.02	11.31	0.29		845.71	845.92
	2/19/2016	11.21	11.48	0.27		845.54	845.73
	2/16/2016	10.63	10.90	0.27		846.12	846.31
	2/12/2016	10.86	11.13	0.27		845.89	846.08
	2/8/2016	10.45	10.60	0.15		846.42	846.53
	2/5/2016	10.75	11.15	0.40		845.87	846.16
2/1/2016	10.90	11.16	0.26		845.86	846.05	
RT-2A					818.31		
	2/29/2016	-	1.45	-		816.86	-
	2/26/2016	-	1.45	-		816.86	-
	2/22/2016	-	1.41	-		816.90	-
	2/19/2016	-	1.45	-		816.86	-
	2/16/2016	-	1.44	-		816.87	-
	2/12/2016	-	1.43	-		816.88	-
	2/8/2016	-	1.35	-		816.96	-
	2/5/2016	-	1.49	-		816.82	-
2/1/2016	-	-	-		818.31	-	
RT-2B					818.92		
	2/29/2016	-	2.13	-		816.79	-
	2/26/2016	-	2.13	-		816.79	-
	2/22/2016	-	2.02	-		816.90	-
	2/19/2016	-	2.09	-		816.83	-
	2/16/2016	-	2.09	-		816.83	-
	2/12/2016	-	2.10	-		816.82	-
	2/8/2016	-	2.09	-		816.83	-
	2/5/2016	-	2.10	-		816.82	-
2/1/2016	-	2.05	-		816.87	-	

Table 2. Groundwater Elevation and Product Thickness Data

Plantation Pipe Line Company

Lewis Drive Release, Belton, South Carolina

Site ID #18693 "Kinder Morgan Belton Pipeline Release"

Location ID	Date	Depth to Product (ft BTOC)	Depth to Water (ft BTOC)	Product Thickness (ft)	Top of Casing Elevation (ft amsl)	Groundwater Elevation (ft amsl)	Corrected ¹ Groundwater Elevation (ft amsl)
RT-2C					819.02		
	2/29/2016	-	1.87	-		817.15	-
	2/26/2016	-	1.88	-		817.14	-
	2/22/2016	-	1.85	-		817.17	-
	2/19/2016	-	1.89	-		817.13	-
	2/16/2016	-	1.85	-		817.17	-
	2/12/2016	-	1.85	-		817.17	-
	2/8/2016	-	1.85	-		817.17	-
	2/5/2016	1.85	1.99	0.14		817.03	817.13
	2/1/2016	-	1.80	-		817.22	-
RT-2D					819.57		
	2/29/2016	2.70	2.74	0.04		816.83	816.86
	2/26/2016	2.69	2.73	0.04		816.84	816.87
	2/22/2016	-	2.68	-		816.89	-
	2/19/2016	2.70	2.75	0.05		816.82	816.85
	2/16/2016	2.65	2.67	0.02		816.90	816.91
	2/12/2016	-	2.66	-		816.91	-
	2/8/2016	-	2.65	-		816.92	-
	2/5/2016	-	2.68	-		816.89	-
	2/1/2016	-	2.63	-		816.94	-
RT-2E					819.40		
	2/29/2016	2.51	2.52	0.01		816.88	816.89
	2/26/2016	-	2.52	-		816.88	-
	2/22/2016	-	2.43	-		816.97	-
	2/19/2016	-	2.50	-		816.90	-
	2/16/2016	-	1.48	-		817.92	-
	2/12/2016	-	2.48	-		816.92	-
	2/8/2016	-	2.49	-		816.91	-
	2/5/2016	-	2.49	-		816.91	-
	2/1/2016	-	2.43	-		816.97	-
RT-2F					819.52		
	2/29/2016	2.32	2.33	0.01		817.19	817.19
	2/26/2016	-	2.31	-		817.21	-
	2/22/2016	-	2.20	-		817.32	-
	2/19/2016	-	2.31	-		817.21	-
	2/16/2016	-	2.28	-		817.24	-
	2/12/2016	-	2.40	-		817.12	-
	2/8/2016	-	2.26	-		817.26	-
	2/5/2016	-	2.34	-		817.18	-
	2/1/2016	2.22	2.28	0.06		817.24	817.28
RT-2G					820.31		
	2/29/2016	-	1.04	-		819.27	-
	2/26/2016	-	1.16	-		819.15	-
	2/22/2016	-	1.02	-		819.29	-
	2/19/2016	-	1.19	-		819.12	-
	2/16/2016	-	1.14	-		819.17	-
	2/12/2016	-	1.13	-		819.18	-
	2/8/2016	-	1.13	-		819.18	-
	2/5/2016	-	1.14	-		819.17	-
	2/1/2016	-	1.14	-		819.17	-

Table 2. Groundwater Elevation and Product Thickness Data

Plantation Pipe Line Company

Lewis Drive Release, Belton, South Carolina

Site ID #18693 "Kinder Morgan Belton Pipeline Release"

Location ID	Date	Depth to Product (ft BTOC)	Depth to Water (ft BTOC)	Product Thickness (ft)	Top of Casing Elevation (ft amsl)	Groundwater Elevation (ft amsl)	Corrected ¹ Groundwater Elevation (ft amsl)
RT-2H					822.17		
	2/29/2016	-	3.60	-		818.57	-
	2/26/2016	-	3.51	-		818.66	-
	2/22/2016	-	3.42	-		818.75	-
	2/19/2016	-	3.56	-		818.61	-
	2/16/2016	-	3.61	-		818.56	-
	2/12/2016	-	5.58	-		816.59	-
	2/8/2016	-	3.52	-		818.65	-
	2/5/2016	-	3.53	-		818.64	-
	2/1/2016	-	3.59	-		818.58	-
RT-2I					819.51		
	2/29/2016	-	0.85	-		818.66	-
	2/26/2016	-	0.85	-		818.66	-
	2/22/2016	-	1.13	-		818.38	-
	2/19/2016	-	1.42	-		818.09	-
	2/16/2016	-	0.87	-		818.64	-
	2/12/2016	-	0.90	-		818.61	-
	2/8/2016	-	0.85	-		818.66	-
	2/5/2016	-	0.80	-		818.71	-
	2/1/2016	-	0.90	-		818.61	-
RT-2J					818.38		
	2/29/2016	-	1.05	-		817.33	-
	2/26/2016	-	1.06	-		817.32	-
	2/22/2016	-	1.06	-		817.32	-
	2/19/2016	-	1.17	-		817.21	-
	2/16/2016	-	1.06	-		817.32	-
	2/12/2016	-	1.05	-		817.33	-
	2/8/2016	-	1.00	-		817.38	-
	2/5/2016	-	1.02	-		817.36	-
	2/1/2016	-	1.04	-		817.34	-
RT-2K					817.46		
	2/29/2016	-	1.04	-		816.42	-
	2/26/2016	-	1.01	-		816.45	-
	2/22/2016	-	1.00	-		816.46	-
	2/19/2016	-	1.10	-		816.36	-
	2/16/2016	-	0.90	-		816.56	-
	2/12/2016	-	1.10	-		816.36	-
	2/8/2016	-	0.90	-		816.56	-
	2/5/2016	-	0.90	-		816.56	-
	2/1/2016	-	0.89	-		816.57	-
RT-2L					820.38		
	2/29/2016	-	2.31	-		818.07	-
	2/26/2016	-	2.33	-		818.05	-
	2/22/2016	-	2.04	-		818.34	-
	2/19/2016	-	2.10	-		818.28	-
	2/16/2016	-	2.31	-		818.07	-
	2/12/2016	-	2.31	-		818.07	-
	2/8/2016	-	2.29	-		818.09	-
	2/5/2016	-	2.29	-		818.09	-
	2/1/2016	2.29	2.30	0.01		818.08	818.08

Table 2. Groundwater Elevation and Product Thickness Data

Plantation Pipe Line Company

Lewis Drive Release, Belton, South Carolina

Site ID #18693 "Kinder Morgan Belton Pipeline Release"

Location ID	Date	Depth to Product (ft BTOC)	Depth to Water (ft BTOC)	Product Thickness (ft)	Top of Casing Elevation (ft amsl)	Groundwater Elevation (ft amsl)	Corrected ¹ Groundwater Elevation (ft amsl)
RW-01					851.92		
	2/29/2016	-	6.85	-		845.07	-
	2/26/2016	-	6.92	-		845.00	-
	2/22/2016	-	7.86	-		844.06	-
	2/19/2016	-	7.88	-		844.04	-
	2/16/2016	-	7.13	-		844.79	-
	2/12/2016	-	6.70	-		845.22	-
	2/8/2016	-	6.45	-		845.47	-
	2/5/2016	-	6.84	-		845.08	-
2/1/2016	-	7.00	-		844.92	-	
RW-02					852.69		
	2/29/2016	15.35	15.36	0.01		837.33	837.34
	2/26/2016	15.66	15.70	0.04		836.99	837.02
	2/22/2016	-	15.92	-		836.77	-
	2/19/2016	16.05	16.06	0.01		836.63	836.64
	2/16/2016	-	15.78	-		836.91	-
	2/12/2016	-	15.69	-		837.00	-
	2/8/2016	-	15.60	-		837.09	-
	2/5/2016	-	16.09	-		836.60	-
2/1/2016	-	16.17	-		836.52	-	
RW-03					852.34		
	2/29/2016	-	15.97	-		836.37	-
	2/26/2016	-	16.06	-		836.28	-
	2/22/2016	-	16.46	-		835.88	-
	2/19/2016	-	16.56	-		835.78	-
	2/16/2016	-	15.90	-		836.44	-
	2/12/2016	-	16.08	-		836.26	-
	2/8/2016	-	15.97	-		836.37	-
	2/5/2016	-	16.25	-		836.09	-
2/1/2016	-	16.44	-		835.90	-	
RW-04					853.93		
	2/29/2016	21.94	21.96	0.02		831.97	831.99
	2/26/2016	22.18	22.20	0.02		831.73	831.75
	2/22/2016	22.22	22.24	0.02		831.69	831.71
	2/19/2016	22.36	22.38	0.02		831.55	831.57
	2/16/2016	-	22.10	-		831.83	-
	2/12/2016	22.16	22.20	0.04		831.73	831.76
	2/8/2016	-	22.14	-		831.79	-
	2/5/2016	22.55	22.57	0.02		831.36	831.38
2/1/2016	22.56	22.65	0.09		831.28	831.35	
RW-05					853.53		
	2/29/2016	27.29	27.50	0.21		826.03	826.19
	2/26/2016	27.43	27.62	0.19		825.91	826.05
	2/22/2016	27.71	27.88	0.17		825.65	825.78
	2/19/2016	27.73	27.89	0.16		825.64	825.76
	2/16/2016	27.45	27.65	0.20		825.88	826.03
	2/12/2016	27.43	27.70	0.27		825.83	826.03
	2/8/2016	27.32	27.45	0.13		826.08	826.18
	2/5/2016	27.58	27.90	0.32		825.63	825.87
2/1/2016	27.69	28.00	0.31		825.53	825.76	

Table 2. Groundwater Elevation and Product Thickness Data

Plantation Pipe Line Company

Lewis Drive Release, Belton, South Carolina

Site ID #18693 "Kinder Morgan Belton Pipeline Release"

Location ID	Date	Depth to Product (ft BTOC)	Depth to Water (ft BTOC)	Product Thickness (ft)	Top of Casing Elevation (ft amsl)	Groundwater Elevation (ft amsl)	Corrected ¹ Groundwater Elevation (ft amsl)
RW-06					846.21		
	2/29/2016	21.80	22.30	0.50		823.91	824.27
	2/26/2016	21.91	22.33	0.42		823.88	824.19
	2/22/2016	22.15	22.47	0.32		823.74	823.97
	2/19/2016	22.24	22.61	0.37		823.60	823.87
	2/16/2016	22.00	22.30	0.30		823.91	824.13
	2/12/2016	22.02	22.33	0.31		823.88	824.10
	2/8/2016	21.83	22.10	0.27		824.11	824.31
	2/5/2016	21.96	22.70	0.74		823.51	824.05
	2/1/2016	22.07	22.87	0.80		823.34	823.92
RW-07					843.19		
	2/29/2016	18.30	18.33	0.03		824.86	824.88
	2/26/2016	18.33	18.35	0.02		824.84	824.86
	2/22/2016	18.67	18.72	0.05		824.47	824.51
	2/19/2016	18.69	18.72	0.03		824.47	824.49
	2/16/2016	18.44	18.47	0.03		824.72	824.74
	2/12/2016	18.43	18.46	0.03		824.73	824.75
	2/8/2016	-	18.23	-		824.96	-
	2/5/2016	18.38	18.40	0.02		824.79	824.81
	2/1/2016	18.63	18.70	0.07		824.49	824.54
RW-08					835.48		
	2/29/2016	11.80	12.23	0.43		823.25	823.56
	2/26/2016	11.81	12.15	0.34		823.33	823.58
	2/22/2016	12.17	12.40	0.23		823.08	823.25
	2/19/2016	12.23	12.44	0.21		823.04	823.19
	2/16/2016	11.95	12.31	0.36		823.17	823.43
	2/12/2016	11.92	12.30	0.38		823.18	823.46
	2/8/2016	11.70	12.00	0.30		823.48	823.70
	2/5/2016	11.78	12.13	0.35		823.35	823.60
	2/1/2016	12.10	12.43	0.33		823.05	823.29
RW-09					835.12		
	2/29/2016	-	9.05	-		826.07	-
	2/26/2016	-	9.03	-		826.09	-
	2/22/2016	-	9.47	-		825.65	-
	2/19/2016	-	9.55	-		825.57	-
	2/16/2016	-	9.21	-		825.91	-
	2/12/2016	-	9.18	-		825.94	-
	2/8/2016	-	8.93	-		826.19	-
	2/5/2016	-	8.95	-		826.17	-
	2/1/2016	-	9.34	-		825.78	-
RW-10					848.53		
	2/29/2016	6.58	6.62	0.04		841.91	841.94
	2/26/2016	6.89	6.93	0.04		841.60	841.63
	2/22/2016	7.22	7.24	0.02		841.29	841.31
	2/19/2016	7.23	7.26	0.03		841.27	841.29
	2/16/2016	6.91	6.95	0.04		841.58	841.61
	2/12/2016	7.03	7.06	0.03		841.47	841.49
	2/8/2016	6.93	6.95	0.02		841.58	841.60
	2/5/2016	7.41	7.45	0.04		841.08	841.11
	2/1/2016	7.49	7.51	0.02		841.02	841.04

Table 2. Groundwater Elevation and Product Thickness Data

Plantation Pipe Line Company

Lewis Drive Release, Belton, South Carolina

Site ID #18693 "Kinder Morgan Belton Pipeline Release"

Location ID	Date	Depth to Product (ft BTOC)	Depth to Water (ft BTOC)	Product Thickness (ft)	Top of Casing Elevation (ft amsl)	Groundwater Elevation (ft amsl)	Corrected ¹ Groundwater Elevation (ft amsl)
RW-11					852.97		
	2/29/2016	5.52	6.70	1.18		846.27	847.13
	2/26/2016	5.63	6.58	0.95		846.39	847.08
	2/22/2016	6.48	6.80	0.32		846.17	846.40
	2/19/2016	6.70	6.87	0.17		846.10	846.22
	2/16/2016	6.10	6.36	0.26		846.61	846.80
	2/12/2016	6.22	6.31	0.09		846.66	846.72
	2/8/2016	5.32	5.55	0.23		847.42	847.59
	2/5/2016	5.69	6.40	0.71		846.57	847.09
	2/1/2016	6.10	6.40	0.30		846.57	846.79
RW-12					852.75		
	2/29/2016	-	5.95	-		846.80	-
	2/26/2016	-	5.43	-		847.32	-
	2/22/2016	-	7.07	-		845.68	-
	2/19/2016	7.13	7.14	0.01		845.61	845.62
	2/16/2016	-	6.69	-		846.06	-
	2/12/2016	-	6.32	-		846.43	-
	2/8/2016	5.50	5.57	0.07		847.18	847.23
	2/5/2016	5.55	5.59	0.04		847.16	847.19
	2/1/2016	-	6.13	-		846.62	-
RW-13					847.97		
	2/29/2016	-	6.73	-		841.24	-
	2/26/2016	-	7.11	-		840.86	-
	2/22/2016	-	7.41	-		840.56	-
	2/19/2016	-	7.54	-		840.43	-
	2/16/2016	-	7.05	-		840.92	-
	2/12/2016	-	7.30	-		840.67	-
	2/8/2016	-	7.18	-		840.79	-
	2/5/2016	-	9.55	-		838.42	-
	2/1/2016	-	7.64	-		840.33	-
RW-14					827.54		
	2/29/2016	-	9.03	-		818.51	-
	2/26/2016	-	9.00	-		818.54	-
	2/22/2016	4.19	4.22	0.03		823.32	823.34
	2/19/2016	9.20	9.23	0.03		818.31	818.33
	2/16/2016	9.11	9.13	0.02		818.41	818.42
	2/12/2016	9.10	9.11	0.01		818.43	818.44
	2/8/2016	-	8.96	-		818.58	-
	2/5/2016	8.98	9.00	0.02		818.54	818.55
	2/1/2016	9.17	9.41	0.24		818.13	818.31
RW-15					851.64		
	2/29/2016	-	7.46	-		844.18	-
	2/26/2016	-	7.80	-		843.84	-
	2/22/2016	-	7.98	-		843.66	-
	2/19/2016	-	8.05	-		843.59	-
	2/16/2016	-	7.79	-		843.85	-
	2/12/2016	-	7.90	-		843.74	-
	2/8/2016	-	8.00	-		843.64	-
	2/5/2016	-	8.25	-		843.39	-
	2/1/2016	-	8.25	-		843.39	-

Table 2. Groundwater Elevation and Product Thickness Data

Plantation Pipe Line Company

Lewis Drive Release, Belton, South Carolina

Site ID #18693 "Kinder Morgan Belton Pipeline Release"

Location ID	Date	Depth to Product (ft BTOC)	Depth to Water (ft BTOC)	Product Thickness (ft)	Top of Casing Elevation (ft amsl)	Groundwater Elevation (ft amsl)	Corrected¹ Groundwater Elevation (ft amsl)
TW-04R	2/19/2016	-	2.78	-	852.64	849.86	-
TW-05R	2/19/2016	-	2.00	-	849.93	847.93	-
TW-14R	2/19/2016	-	3.55	-	853.37	849.82	-
TW-15R	2/19/2016	-	1.52	-	850.62	849.10	-
TW-21	2/19/2016	-	0.81	-	849.70	848.89	-
TW-28	2/19/2016	15.98	15.99	0.01	851.42	835.43	835.44
TW-30	2/19/2016	-	15.15	-	851.81	836.66	-
TW-34	2/19/2016	-	19.68	-	854.79	835.11	-
TW-35	2/19/2016	-	22.08	-	854.10	832.02	-
TW-40	2/19/2016	-	23.26	-	853.35	830.09	-
TW-41	2/19/2016	-	21.56	-	849.38	827.82	-
TW-42	2/19/2016	20.72	23.05	2.33	846.84	823.79	825.49
TW-45	2/19/2016	22.58	23.95	1.37	848.31	824.36	825.36
TW-46	2/19/2016	-	20.72	-	846.88	826.16	-
TW-55	2/19/2016	-	3.30	-	845.93	842.63	-
TW-59	2/19/2016	-	10.20	-	834.78	824.58	-
TW-60	2/19/2016	-	-	-	828.03	828.03	-
TW-64	2/19/2016	-	9.50	-	845.88	836.38	-
TW-65	2/19/2016	-	14.86	-	845.62	830.76	-
TW-66	2/19/2016	-	-	-	820.31	820.31	-
TW-67	2/19/2016	-	-	-	852.71	852.71	-
TW-68	2/19/2016	-	15.93	-	846.45	830.52	-
TW-69	2/19/2016	-	7.49	-	840.27	832.78	-
TW-70	2/19/2016	-	11.60	-	841.95	830.35	-
TW-73	2/19/2016	-	2.75	-	850.53	847.78	-

Table 2. Groundwater Elevation and Product Thickness Data

Plantation Pipe Line Company

Lewis Drive Release, Belton, South Carolina

Site ID #18693 "Kinder Morgan Belton Pipeline Release"

Location ID	Date	Depth to Product (ft BTOC)	Depth to Water (ft BTOC)	Product Thickness (ft)	Top of Casing Elevation (ft amsl)	Groundwater Elevation (ft amsl)	Corrected ¹ Groundwater Elevation (ft amsl)
TW-76	2/19/2016	-	7.25	-	854.32	847.07	-
TW-81	2/19/2016	-	0.91	-	849.43	848.52	-
TW-82	2/19/2016	-	0.84	-	849.64	848.80	-
TW-83	2/19/2016	-	1.40	-	850.44	849.04	-
TW-84	2/19/2016	2.07	2.10	0.03	851.22	849.12	849.14
TW-85	2/19/2016	-	4.62	-	843.49	838.87	-
TW-86	2/19/2016	-	3.53	-	853.10	849.57	-
TW-87	2/19/2016	-	2.64	-	852.25	849.61	-
TW-90	2/19/2016	-	6.65	-	847.43	840.78	-
TW-94	2/19/2016	-	1.56	-	840.58	839.02	-
TW-96	2/19/2016	-	3.28	-	840.40	837.12	-

Notes:

¹ Calculated based on an oil:water density ratio of 0.73

amsl = above mean sea level

BTOC = below top of casing

ft = feet

NS = elevation not yet surveyed