



CH2M Raleigh
3120 Highwoods Boulevard
Suite 214
Raleigh, NC 27601
O +1 919 875 4311
F +1 919 875 8491
www.ch2m.com

February 8, 2016

Delivered via FedEx

Ms. Bobbi Coleman
South Carolina Department of Health and Environmental Control
Assessment Section, UST Management Division
Bureau of Land and Waste Management
2600 Bull Street
Columbia, SC 29201

Subject: **Lewis Drive – Monthly Status Update**
Plantation Pipe Line Company
Belton, South Carolina
Site ID #18693, “Kinder Morgan Belton Pipeline Release”



Dear Ms. Coleman,

On behalf of Plantation Pipe Line Company, CH2M is submitting the attached Monthly Status Report covering January 2016 for the Lewis Drive site. If you have any questions or concerns, please call me at 919-760-1777, Mr. Scott Powell/CH2M at 678-530-4457, or Mr. Jerry Aycock/Plantation at 770-751-4165.

Regards,
CH2M HILL Engineers, Inc.

William M. Waldron, P.E.
Senior Project Manager

Enclosures

- Monthly Report including:
 - Figure 1 – Groundwater Elevation Map
 - Figure 2 – Product Thickness Map
 - Figure 3 – Surface Water Sampling Locations
 - Table 1 – Well Construction Information
 - Table 2 – Groundwater Elevation and Product Thickness Data

Cc (via e-mail):

Jerry Aycock, Plantation, Jerry_Aycock@kindermorgan.com
Mary Clair Lyons, Esq., Plantation, Mary_Lyons@kindermorgan.com
Richard Morton, Esq., Womble Carlyle Sandridge & Rice, PLLC, rmorton@wcsr.com
File

Monthly Report
Plantation Pipe Line Company
Lewis Drive Release
Site ID #18693 “Kinder Morgan Belton Pipeline Release”
January 2016

Activities since Last Report

- Completed installing and developing 5 bedrock monitoring wells and 6 residuum monitoring wells as part of Additional Site Assessment activities.
- Collected 10 soil boring samples and 43 groundwater samples (including QA/QC samples) as part of Additional Site Assessment Activities.
- Evacuated product/water from Trench RT-2 installed adjacent to Brown’s Creek and groundwater from recovery sumps on a twice per week (usually Mon/Fri) schedule. Transferred product/water to a 21,000-gallon frac tank for on-site oil/water separation and delivery off-site to the locations indicated on the table below. Recovered 30 gallons of product since the last report (dated 1/15/2015). Since February 2015, product recovery efforts have been focused on the trenches and recovery sumps and select wells that have contained the highest product levels. Recovered **209,066 gallons** (4,978 barrels) of product through the end of January 2016.
- Gauged depth to product and depth to water in recovery sumps, trenches, temporary wells, and recovery wells on a routine basis. During the monthly site-wide gauging event on January 11, 2016, 10 wells and sumps had product thicknesses of 0.5 foot or greater. The greatest product thickness was 3.91 feet in MW-20.
- Due to excessive rainfall in November and December (over 10 inches in *each* month), groundwater elevations rose and product thicknesses were depressed.
- Inspected Brown’s Creek and Wetland #1 (Cupboard Creek) south of W Calhoun Road for sheen, odor, or distressed vegetation. None observed.
- To date, 18 rounds of surface water samples have been analyzed for benzene, toluene, ethylbenzene, xylenes, and naphthalene. See Figure 3 for surface water sampling locations.
 - Benzene, toluene, and xylenes were detected in surface water samples SW-01, SW-02, SW-04, SW-08 and SW-09 collected on 1/25/2016. Benzene levels exceeded South Carolina’s applicable surface water standard for benzene of 2.2 µg/L at the same 5 locations. Detections ranged from 2.4 µg/L at SW-08 to 17.6 µg/L at SW-01.
 - Prior to the November round of sampling, no hydrocarbon constituents had been detected in surface water samples since 5/19/2015.
- Conducted air monitoring with MiniRAE 3000 photo-ionization detector in vicinity of site activities.
- Conducted weekly internal storm water pollution prevention plan (SWPPP) inspections on January 6, 13, 20, and 27 during active drilling, sampling, and evacuation operations.
- Collected PID readings from 5 interim soil vapor monitoring points to screen for soil vapors on a routine basis.
- Issued monthly report to SCDHEC.

Future Activities

- Evacuate product from product recovery sumps, trenches, and select wells routinely.
- Gauge product recovery sumps, trenches, and wells routinely. Gauge 1-inch piezometers monthly.
- Continue to dispose recovered liquids offsite.
- Continue routine visual inspections of Brown’s Creek and Wetland #1 (Cupboard Creek).
- Conduct monthly sampling of surface water at 11 pre-determined locations along Brown’s Creek and Cupboard Creek.
- Start development of Corrective Action Plan and Basis of Design Report.
- Continue coordination with landowners on an as-needed basis.
- Continue monthly reporting to SCDHEC.

Wildlife Issues

- None.

Cumulative Product Shipped

Date	Destination	Total Product (gal)
12/9/2014	PPL Greensboro	4,289
12/9/2014	PPL Greensboro	3,100
12/12/2014	PPL Greensboro	1,189
12/30/2014	Crystal Clean (FCC)	5,057
12/31/2014	Crystal Clean (FCC)	5,333
1/4/2015	Crystal Clean (FCC)	5,000
1/4/2015	Crystal Clean (FCC)	2,872
1/5/2015	Crystal Clean (FCC)	5,013
1/6/2015	Crystal Clean (FCC)	4,800
1/7/2015	Allied Energies	6,532
1/7/2015	Allied Energies	6,425
1/7/2015	Allied Energies	8,200
1/9/2015	Allied Energies	6,482
1/9/2015	Allied Energies	7,825
1/12/2015	Allied Energies	6,540
1/12/2015	Allied Energies	6,467
1/13/2015	Allied Energies	6,732
1/13/2015	Allied Energies	6,595
1/15/2015	Allied Energies	6,500
1/22/2015	Allied Energies	5,791
1/23/2015	Allied Energies	5,450
1/27/2015	Allied Energies	5,791
1/27/2015	Allied Energies	5,557
1/27/2015	Allied Energies	6,043
1/28/2015	Allied Energies	4,411
2/5/2015	Allied Energies	5,513
2/11/2015	Allied Energies	5,732
2/11/2015	Allied Energies	5,606
2/25/2015	Allied Energies	5,583
3/4/2015	Allied Energies	4,000
3/16/2015	Allied Energies	5,200
6/3/2015	Allied Energies	6,500
6/3/2015	Allied Energies	4,214
8/10/2015	Allied Energies	6,000
11/2/2015	Allied Energies	5,800
11/13/2015	Crystal Clean (FCC)	2,900
12/1/2015	Allied Energies	6,690
12/1/2015	Allied Energies	6,700
12/7/2015	Crystal Clean (FCC)	500
2/1/2016	To be determined	135
	Total (gallons)	209,066
	Total (barrels)	4,978

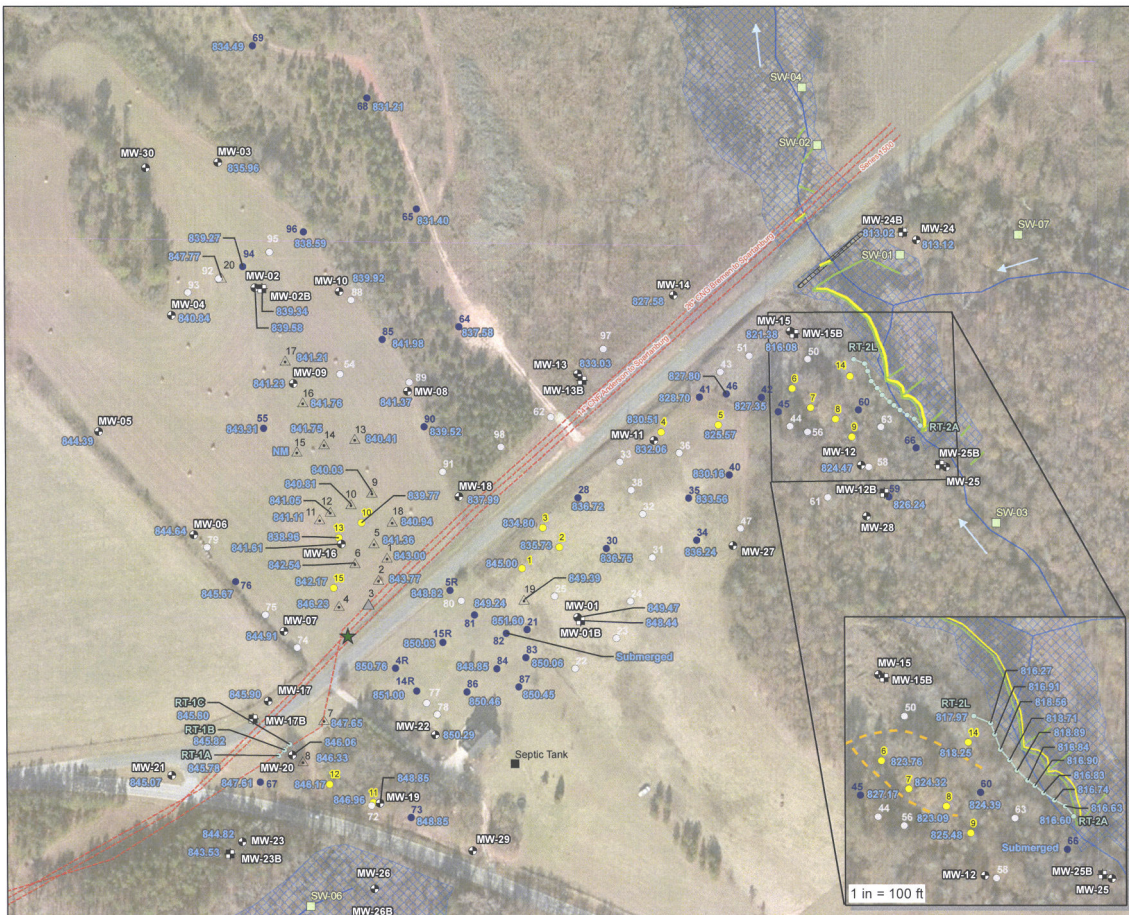
Access Agreements

- Mr. Scott Lewis gave verbal approval to conduct needed response activities on his property. A formal access agreement has been submitted to Mr. Scott & Eric Lewis for consideration, but to date has not been formally executed.

Local Authorities On-Site

- Anderson County Stormwater Department conducted a scheduled inspection on January 26, 2016.

DRAFT



- LEGEND**
- Monitoring Well
 - Bedrock Monitoring Well
 - Piezometer ("R" indicates Replacement)
 - Abandoned Temporary Piezometer
 - Recovery Well (4" diameter)
 - Recovery Trench Point
 - Recovery Sump
 - Abandoned Recovery Sump
 - Surface Water Flow Direction
 - Recovery Trench
 - Soft Boom
 - Hard Boom
 - Access Road
 - Pipeline
 - Stream (NHD)
 - Beaver Dam
 - Delineated Wetland
 - Detail Area
- 830.34 Corrected Groundwater Elevation as of 01/11/2016 in feet above mean sea level
- NM Not Measured

BASE MAP SOURCE:
 ESRI World Imagery Layer, 2015
 USGS National Hydrography Dataset (NHD)

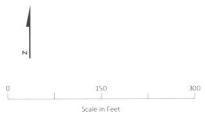
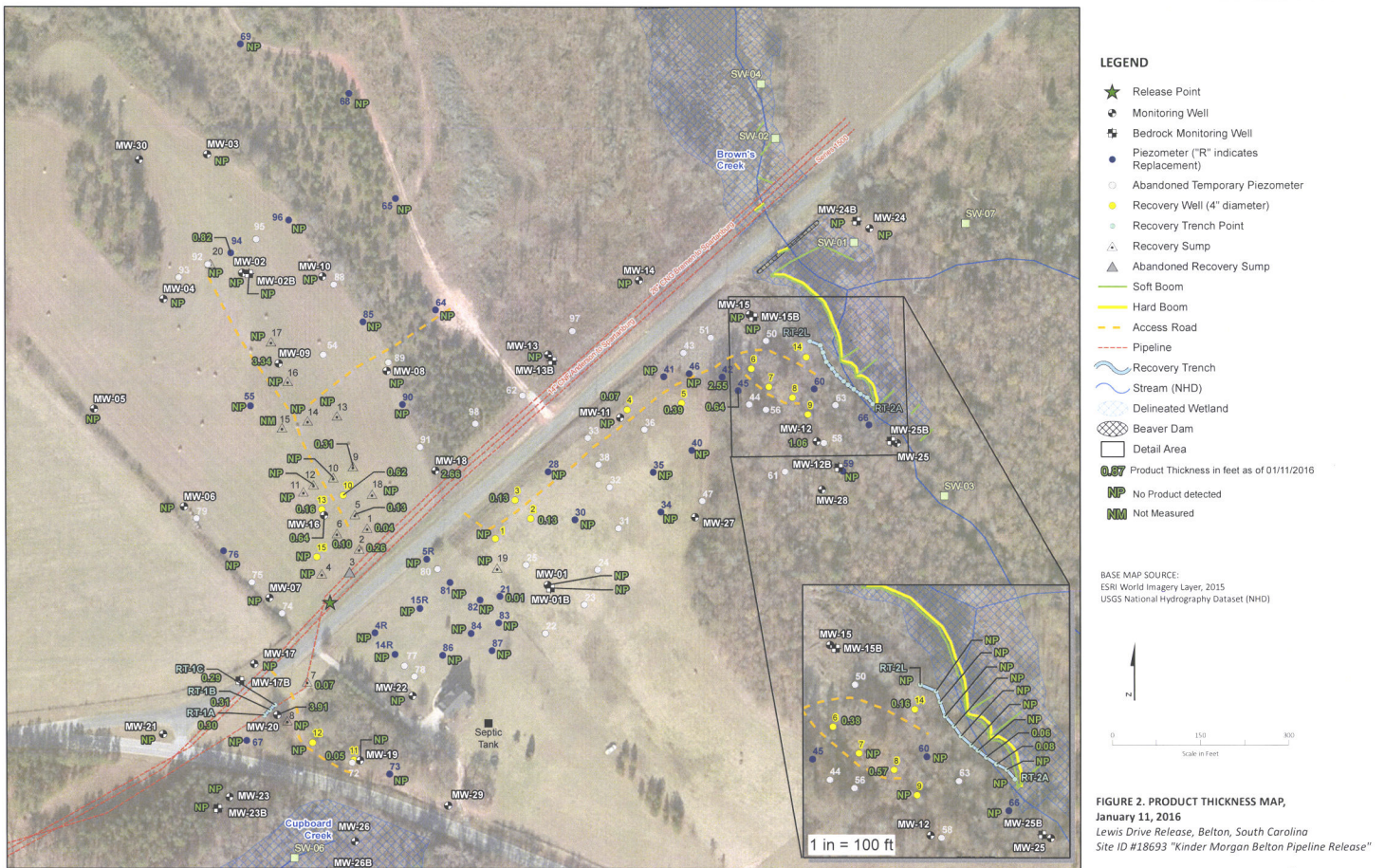


FIGURE 1. GROUNDWATER ELEVATION MAP
 Lewis Drive Release, Belton, South Carolina
 Site ID #18693 "Kinder Morgan Belton Pipeline Release"



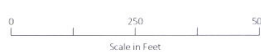
DRAFT





LEGEND

- ★ Release Point
- Surface Water Sampling Location
- - - Pipeline
- ~ Topographic Contour (5' Interval)
- ~ National Hydrography Dataset Stream
- ➔ Flow Direction of Creek
- ▨ Delineated Wetland
- ⊗ Beaver Dam



Base Map Source:
ESRI ArcMap World Imagery, 2015
USGS National Hydrography Dataset (NHD)

FIGURE 3
SURFACE WATER SAMPLING LOCATIONS
Lewis Drive Release, Belton, South Carolina
Site ID #18693
"Kinder Morgan Belton Pipeline Release"

Table 1. Well Construction Information
 Plantation Pipe Line Company
 Lewis Drive Release, Belton, South Carolina
 Site ID #18693 "Kinder Morgan Belton Pipeline Release"

Location ID	Installation Method	Permit #	Date Installed	Date Abandoned	Purpose	Ground Surface Elevation (ft amsl)	TOC Elevation (ft amsl)	Measured Depth to Bottom (ft BTOC)	Bore Hole Diameter (in)	Well Dia (in)	Well Depth (ft bgs)	Bottom of Well (ft amsl)	Top of Screen (ft BTOC)	Bottom of Screen (ft BTOC)	Top of Screen (ft bgs)	Bottom of Screen (ft bgs)	Top of Screen (ft amsl)	Bottom of Screen (ft amsl)	Screened Length (ft)
Monitoring Wells																			
MW-01	CME 550 HSA	MW-10136	6/26/2015	Still in use	Monitoring Well/Gauging	850.25	853.07	15.65	8	2	13.00	837.2	5.82	15.82	3.0	13.0	847.2	837.2	10.00
MW-01B	Schramm Air Rig	MW-10136	6/25/2015	Still in use	Monitoring Well/Gauging	850.45	852.99	44.50	10	6	38.50	812.0	NA	NA	NA	NA	NA	NA	NA
MW-02	CME 750 HSA	MW-10136	6/25/2015	Still in use	Monitoring Well/Gauging	841.24	841.04	23.14	8	2	20.00	821.2	4.80	19.80	5.0	20.0	836.2	821.2	15.00
MW-02B	Schramm Air Rig	MW-10136	6/24/2015	Still in use	Monitoring Well/Gauging	841.40	841.18	87.15	10	6	81.00	760.4	NA	NA	NA	NA	NA	NA	NA
MW-03	CME 550 HSA	MW-10136	6/23/2015	Still in use	Monitoring Well/Gauging	838.38	838.36	22.19	8	2	20.00	818.4	4.98	19.98	5.0	20.0	833.4	818.4	15.00
MW-04	CME 550 HSA	MW-10136	6/23/2015	Still in use	Monitoring Well/Gauging	844.51	844.42	22.13	8	2	20.00	824.5	4.91	19.91	5.0	20.0	839.5	824.5	15.00
MW-05	CME 550 HSA	MW-10136	6/24/2015	Still in use	Monitoring Well/Gauging	851.15	851.11	21.78	8	2	20.00	831.1	4.96	19.96	5.0	20.0	846.1	831.1	15.00
MW-06	CME 550 HSA	MW-10136	6/24/2015	Still in use	Monitoring Well/Gauging	852.98	852.92	21.84	8	2	19.60	833.4	4.54	19.54	5.0	19.6	848.0	833.4	15.00
MW-07	CME 550 HSA	MW-10136	6/25/2015	Still in use	Monitoring Well/Gauging	853.02	853.02	15.35	8	2	13.50	839.5	-1.50	13.50	3.5	13.5	849.5	839.5	15.00
MW-08	CME 550 HSA	MW-10136	6/25/2015	Still in use	Monitoring Well/Gauging	844.75	844.72	21.81	8	2	19.70	825.1	4.67	19.67	4.7	19.7	840.1	825.1	15.00
MW-09	CME 550 HSA	MW-10136	6/25/2015	Still in use	Monitoring Well/Gauging	843.72	843.63	22.63	8	2	19.50	824.2	4.41	19.41	4.5	19.5	839.2	824.2	15.00
MW-10	CME 550 HSA	MW-10136	6/25/2015	Still in use	Monitoring Well/Gauging	842.33	845.41	22.41	8	2	20.00	822.3	8.08	23.08	5.0	20.0	837.3	822.3	15.00
MW-11	CME 550 HSA	MW-10136	7/1/2015	Still in use	Monitoring Well/Gauging	852.36	855.63	31.32	8	2	25.20	827.2	13.27	28.27	14.2	25.0	838.2	827.4	15.00
MW-12	CME 550 HSA	MW-10136	6/25/2015	Still in use	Monitoring Well/Gauging	832.20	834.53	22.05	8	2	19.30	812.9	6.63	21.63	4.3	19.3	827.9	812.9	15.00
MW-13	CME 550 HSA	MW-10136	6/26/2015	Still in use	Monitoring Well/Gauging	845.93	848.84	21.15	8	2	19.00	826.9	6.92	21.92	4.0	19.0	841.9	826.9	15.00
MW-14	CME 550 HSA	MW-10136	6/26/2015	Still in use	Monitoring Well/Gauging	836.47	838.70	22.18	8	2	19.30	817.2	6.53	21.53	4.3	19.3	832.2	817.2	15.00
MW-15	CME 550 HSA	MW-10136	6/29/2015	Still in use	Monitoring Well/Gauging	828.68	831.03	18.85	8	2	19.00	809.7	6.35	21.35	4.0	19.0	824.7	809.7	15.00
MW-15B	CME 550 HSA	MW-10136	7/28/2015	Still in use	Monitoring Well/Gauging	828.66	831.29	77.85	10	6	77.85	750.8	NA	NA	NA	NA	NA	NA	NA
MW-16	CME 750 HSA	MW-10136	6/26/2015	Still in use	Monitoring Well/Gauging	847.63	847.67	25.30	8	2	20.00	827.6	5.03	20.03	5.0	20.0	842.6	827.6	15.00
MW-17	CME 750 HSA	MW-10136	6/29/2015	Still in use	Monitoring Well/Gauging	855.32	855.35	15.30	8	2	11.00	844.3	6.03	11.03	6.0	11.0	849.3	844.3	5.00
MW-18	CME 550 HSA	MW-10136	6/29/2015	Still in use	Monitoring Well/Gauging	846.82	846.89	21.85	8	2	20.00	826.8	5.06	20.06	5.0	20.0	841.8	826.8	15.00
MW-19	CME 750 HSA	MW-10136	6/29/2015	Still in use	Monitoring Well/Gauging	851.23	853.94	12.13	8	2	9.50	841.7	7.20	12.20	4.5	9.5	846.7	841.7	5.00
MW-20	CME 750 HSA	MW-10136	6/30/2015	Still in use	Monitoring Well/Gauging	853.07	852.89	22.25	8	2	19.00	834.1	3.81	18.81	4.0	19.0	849.1	834.1	15.00
MW-21	CME 750 HSA	MW-10136	6/30/2015	Still in use	Monitoring Well/Gauging	855.68	855.77	23.23	8	2	20.00	835.7	5.09	20.09	5.0	20.0	850.7	835.7	15.00
MW-22	CME 750 HSA	MW-10136	7/1/2015	Still in use	Monitoring Well/Gauging	854.62	854.60	13.41	8	2	11.00	843.6	5.98	10.98	6.0	11.0	848.6	843.6	5.00
MW-23	CME 750 HSA	MW-10136	7/1/2015	Still in use	Monitoring Well/Gauging	846.66	849.57	23.24	8	2	20.00	826.7	7.91	22.91	5.0	20.0	841.7	826.7	15.00
MW-23B	CME 550 HSA	MW-10136	7/22/2015	Still in use	Monitoring Well/Gauging	846.81	849.69	55.75	10	6	50.50	796.3	NA	NA	NA	NA	NA	NA	NA
MW-24	CME 550 HSA	MW-10136	7/15/2015	Still in use	Monitoring Well/Gauging	815.72	817.92	12.50	8	2	13.00	802.7	10.20	15.20	8.0	13.0	807.7	802.7	5.00
MW-24B	CME 550 HSA	MW-10136	7/20/2015	Still in use	Monitoring Well/Gauging	815.83	818.72	41.35	10	6	39.50	776.3	NA	NA	NA	NA	NA	NA	NA
MW-12B	Geoprobe 3230 DT HSA	MW-10460	12/22/2015	Still in use	Monitoring Well/Gauging	NS	NS	45.31	10	6	43.00	NS	NA	NA	NA	NA	NA	NA	NA
MW-13B	Geoprobe 3230 DT HSA	MW-10461	12/21/2015	Still in use	Monitoring Well/Gauging	NS	NS	55.41	10	6	58.00	NS	NA	NA	NA	NA	NA	NA	NA
MW-17B	Geoprobe 3230 DT HSA	MW-10462	1/7/2016	Still in use	Monitoring Well/Gauging	NS	NS	27.40	10	6	27.00	NS	NA	NA	NA	NA	NA	NA	NA
MW-25	Geoprobe 3230 DT HSA	MW-10463	1/5/2016	Still in use	Monitoring Well/Gauging	NS	NS	18.04	8	2	15.00	NS	8.04	18.04	5.0	15.0	NS	NS	10.00

Table 1. Well Construction Information

Plantation Pipe Line Company

Lewis Drive Release, Belton, South Carolina

Site ID #18693 "Kinder Morgan Belton Pipeline Release"

Location ID	Installation Method	Permit #	Date Installed	Date Abandoned	Purpose	Ground Surface Elevation (ft amsl)	TOC Elevation (ft amsl)	Measured Depth to Bottom (ft BTOC)	Bore Hole Diameter (in)	Well Dia (in)	Well Depth (ft bgs)	Bottom of Well (ft amsl)	Top of Screen (ft BTOC)	Bottom of Screen (ft BTOC)	Top of Screen (ft bgs)	Bottom of Screen (ft bgs)	Top of Screen (ft amsl)	Bottom of Screen (ft amsl)	Screened Length (ft)
MW-25B	Geoprobe 3230 DT HSA	MW-10464	1/5/2016	Still in use	Monitoring Well/Gauging	NS	NS	56.43	10	6	58.00	NS	NA	NA	NA	NA	NA	NA	NA
MW-26	Geoprobe 3230 DT HSA	MW-10465	1/4/2016	Still in use	Monitoring Well/Gauging	NS	NS	17.27	8	2	15.25	NS	7.27	17.27	5.0	15.0	NS	NS	10.00
MW-26B	Geoprobe 3230 DT HSA	MW-10466	1/4/2016	Still in use	Monitoring Well/Gauging	NS	NS	42.81	10	6	38.00	NS	NA	NA	NA	NA	NA	NA	NA
MW-27	Geoprobe 3230 DT HSA	MW-10467	1/5/2016	Still in use	Monitoring Well/Gauging	NS	NS	30.11	8	2	30.25	NS	15.11	30.11	15.0	30.0	NS	NS	15.00
MW-28	Geoprobe 3230 DT HSA	MW-10468	1/5/2016	Still in use	Monitoring Well/Gauging	NS	NS	25.21	8	2	23.50	NS	8.50	23.50	10.0	25.0	NS	NS	15.00
MW-29	Geoprobe 3230 DT HSA	MW-10469	1/4/2016	Still in use	Monitoring Well/Gauging	NS	NS	15.02	8	2	15.25	NS	5.00	15.00	5.0	15.0	NS	NS	10.00
MW-30	Geoprobe 3230 DT HSA	MW-10470	1/6/2016	Still in use	Monitoring Well/Gauging	NS	NS	14.56	8	2	15.25	NS	5.00	15.00	5.0	15.0	NS	NS	10.00
Recovery Wells																			
RW-01	HSA	MW-09978	1/28/2015	Still in use	Gauging/LNAPL Recovery	849.49	851.92	19.75	6.25	4	17	832.5	4.44	19.44	2.0	17.0	847.5	832.5	15
RW-02	HSA	MW-09978	1/29/2015	Still in use	Gauging/LNAPL Recovery	850.22	852.69	25.25	6.25	4	23	827.2	15.47	25.47	13.0	23.0	837.2	827.2	10
RW-03	HSA	MW-09978	1/29/2015	Still in use	Gauging/LNAPL Recovery	850.03	852.34	33.39	6.25	4	31.2	818.8	18.51	33.51	16.2	31.2	833.8	818.8	15
RW-04	HSA	MW-09978	1/29/2015	Still in use	Gauging/LNAPL Recovery	852.15	853.93	35.04	6.25	4	33	819.2	14.78	34.78	13.0	33.0	839.2	819.2	20
RW-05	HSA	MW-09978	1/30/2015	Still in use	Gauging/LNAPL Recovery	850.99	853.53	34.50	6.25	4	34.5	816.5	22.04	37.04	19.5	34.5	831.5	816.5	15
RW-06	HSA	MW-09978	1/30/2015	Still in use	Gauging/LNAPL Recovery	844.21	846.21	38.50	6.25	4	38.5	805.7	20.49	40.49	18.5	38.5	825.7	805.7	20
RW-07	HSA	MW-09978	2/2/2015	Still in use	Gauging/LNAPL Recovery	841.01	843.19	38.00	6.25	4	38	803.0	15.18	40.18	13.0	38.0	828.0	803.0	25
RW-08	HSA	MW-09978	2/2/2015	Still in use	Gauging/LNAPL Recovery	833.46	835.48	33.50	6.25	4	33.5	800.0	10.52	35.52	8.5	33.5	825.0	800.0	25
RW-09	HSA	MW-09978	2/3/2015	Still in use	Gauging/LNAPL Recovery	831.13	835.12	42.13	6.25	4	41.5	789.6	15.49	45.49	11.5	41.5	819.6	789.6	30
RW-10	HSA	MW-10006	2/4/2015	Still in use	Gauging/LNAPL Recovery	846.76	848.53	66.51	6.25	4	68.5	778.3	5.27	70.27	3.5	68.5	843.3	778.3	65
RW-11	HSA	MW-10006	2/4/2015	Still in use	Gauging/LNAPL Recovery	851.03	852.97	17.92	6.25	4	19.5	831.5	6.44	21.44	4.5	19.5	846.5	831.5	15
RW-12	HSA	MW-10006	2/5/2015	Still in use	Gauging/LNAPL Recovery	851.48	852.75	14.00	6.25	4	14	837.5	4.00	14.00	4.0	14.0	847.5	837.5	10
RW-13	HSA	MW-10006	2/5/2015	Still in use	Gauging/LNAPL Recovery	847.57	847.97	45.53	6.25	4	50	797.6	0.53	45.53	5.0	50.0	842.6	797.6	45
RW-14	HSA	MW-10006	2/6/2015	Still in use	Gauging/LNAPL Recovery	826.25	827.54	55.00	6.25	4	55	771.2	5.00	55.00	5.0	55.0	821.2	771.2	50
RW-15	HSA	MW-10006	2/10/2015	Still in use	Gauging/LNAPL Recovery	849.48	851.64	36.50	6.25	4	36.5	813.0	1.50	36.50	1.5	36.5	848.0	813.0	35
Recovery Sumps																			
RS-01	Trackhoe	MW-09978	12/29/2014	Still in use	Gauging/LNAPL Recovery	847.95	850.33	23.60	NA	4	21.21	826.7	4.39	23.60	2.0	21.2	845.9	826.7	19.21
RS-02	Trackhoe	MW-09978	12/29/2014	Still in use	Gauging/LNAPL Recovery	848.62	850.38	20.21	NA	4	18.45	830.2	3.76	20.21	2.0	18.4	846.6	830.2	16.45
RS-04	Trackhoe	MW-09978	12/30/2014	Still in use	Gauging/LNAPL Recovery	850.23	851.65	10.25	NA	4	8.83	841.4	3.42	10.25	2.0	8.8	848.2	841.4	6.83
RS-05	Trackhoe	MW-09978	12/31/2014	Still in use	Gauging/LNAPL Recovery	847.14	848.55	25.20	NA	4	23.79	823.3	3.41	25.20	2.0	23.8	845.1	823.3	21.79
RS-06	Trackhoe	MW-09978	12/31/2014	Still in use	Gauging/LNAPL Recovery	847.87	850.97	25.18	NA	4	22.09	825.8	5.09	25.18	2.0	22.1	845.9	825.8	20.09
RS-07	Trackhoe	MW-09978	12/31/2014	Still in use	Gauging/LNAPL Recovery	854.20	856.29	16.78	NA	4	14.69	839.5	4.09	16.78	2.0	14.7	852.9	839.5	12.69
RS-08	Trackhoe	MW-09978	12/31/2014	Still in use	Gauging/LNAPL Recovery	852.70	855.19	20.22	NA	4	17.72	835.0	4.50	20.22	2.0	17.7	850.7	835.0	15.72
RS-09	Trackhoe	MW-09978	1/7/2015	Still in use	Gauging/LNAPL Recovery	846.75	849.12	18.69	NA	4	16.33	830.4	4.37	18.69	2.0	16.3	844.8	830.4	14.33
RS-10	Trackhoe	MW-09978	1/7/2015	Still in use	Gauging/LNAPL Recovery	846.28	847.52	20.06	NA	4	18.82	827.5	3.24	20.06	2.0	18.8	844.3	827.5	16.82
RS-11	Trackhoe	MW-09978	1/7/2015	Still in use	Gauging/LNAPL Recovery	846.35	848.41	22.06	NA	4	19.99	826.4	4.07	22.06	2.0	20.0	844.3	826.4	17.99
RS-12	Trackhoe	MW-09978	1/7/2015	Still in use	Gauging/LNAPL Recovery	846.58	848.87	21.29	NA	4	19.00	827.6	4.29	21.29	2.0	19.0	844.6	827.6	17.00
RS-13	Trackhoe	MW-09978	1/8/2015	Still in use	Gauging/LNAPL Recovery	845.51	848.28	19.92	NA	4	17.14	828.4	4.15	19.92	1.4	17.1	844.1	828.4	15.77
RS-14	Trackhoe	MW-09978	1/8/2015	Still in use	Gauging/LNAPL Recovery	844.66	846.92	19.93	NA	4	17.68	827.0	4.26	19.93	2.0	17.7	842.7	827.0	15.68
RS-15	Trackhoe	MW-09978	1/8/2015	Still in use	Gauging/LNAPL Recovery	845.36	848.97	19.93	NA	4	16.31	829.0	5.62	19.93	2.0	16.3	843.4	829.0	14.31
RS-16	Trackhoe	MW-09978	1/8/2015	Still in use	Gauging/LNAPL Recovery	844.56	846.77	19.98	NA	4	17.77	826.8	4.21	19.98	2.0	17.8	842.6	826.8	15.77
RS-17	Trackhoe	MW-09978	1/8/2015	Still in use	Gauging/LNAPL Recovery	843.29	845.15	19.91	NA	4	18.05	825.2	3.86	19.91	2.0	18.0	841.3	825.2	16.05
RS-18	Trackhoe	MW-09978	1/8/2015	Still in use	Gauging/LNAPL Recovery	846.82	848.59	19.98	NA	4	18.21	828.6	3.77	19.98	2.0	18.2	844.8	828.6	16.21
RS-19	Trackhoe	MW-09978	1/21/2015	Still in use	Gauging/LNAPL Recovery	849.27	852.37	15.10	NA	4	12.00	837.3	5.10	15.10	2.0	12.0	847.3	837.3	10.00
RS-20	Trackhoe	MW-09978	3/19/2015	Still in use	Gauging/LNAPL Recovery	849.58	851.99	11.84	NA	4	9.91	839.7	3.93	11.84	2.0	9.9	847.6	839.7	7.91

Table 1. Well Construction Information
Plantation Pipe Line Company
Lewis Drive Release, Belton, South Carolina
Site ID #18693 "Kinder Morgan Belton Pipeline Release"

Location	Installation Method	Permit #	Date Installed	Date Abandoned	Purpose	Ground Surface Elevation (ft amsl)	TOC Elevation (ft amsl)	Measured		Bore Hole Diameter (in)	Well Dia (in)	Well Depth (ft)	Bottom of Well (ft amsl)	Top of Screen (ft BTOC)	Bottom of Screen (ft TOC)	Top of Screen (ft bgs)	Bottom of Screen (ft bgs)	Top of Screen (ft amsl)	Bottom of Screen (ft amsl)	Screened Length (ft)	
								Depth (ft)	Bottom (ft BTOC)												
Recovery Trench Sumps	Trackhoe																				
RT-1A	Trackhoe	MW-09978	1/6/2015	Still in use	Gauging/LNAPL Recovery	852.86	856.21	20.80	NA	4	20.00	832.9	5.35	23.35	2.0	20.0	850.9	832.9	18		
RT-1B	Trackhoe	MW-09978	1/6/2015	Still in use	Gauging/LNAPL Recovery	853.29	857.30	20.69	NA	4	20.00	833.3	6.00	24.00	2.0	20.0	851.3	833.3	18		
RT-1C	Trackhoe	MW-09978	1/6/2015	Still in use	Gauging/LNAPL Recovery	855.58	857.02	20.20	NA	4	20.00	833.5	5.47	23.47	2.0	20.0	851.5	833.5	18		
RT-2A	Trackhoe	MW-09978	1/22/2015	Still in use	Gauging/LNAPL Recovery	815.66	818.31	10.81	NA	4	10.00	805.7	4.66	12.66	2.0	10.0	813.7	805.7	8		
RT-2B	Trackhoe	MW-09978	1/22/2015	Still in use	Gauging/LNAPL Recovery	816.72	818.92	10.82	NA	4	10.00	806.7	4.20	12.20	2.0	10.0	814.7	806.7	8		
RT-2C	Trackhoe	MW-09978	1/22/2015	Still in use	Gauging/LNAPL Recovery	816.86	819.02	10.23	NA	4	10.00	806.9	4.15	12.15	2.0	10.0	814.9	806.9	8		
RT-2D	Trackhoe	MW-09978	1/22/2015	Still in use	Gauging/LNAPL Recovery	817.46	819.59	10.21	NA	4	10.00	807.5	4.13	12.13	2.0	10.0	815.5	807.5	8		
RT-2E	Trackhoe	MW-09978	1/22/2015	Still in use	Gauging/LNAPL Recovery	817.32	819.40	10.24	NA	4	10.00	807.3	4.08	12.08	2.0	10.0	815.3	807.3	8		
RT-2F	Trackhoe	MW-09978	1/22/2015	Still in use	Gauging/LNAPL Recovery	817.74	819.52	10.23	NA	4	10.00	807.7	3.78	11.78	2.0	10.0	815.7	807.7	8		
RT-2G	Trackhoe	MW-09978	1/22/2015	Still in use	Gauging/LNAPL Recovery	819.27	820.31	10.24	NA	4	10.00	809.3	3.04	11.04	2.0	10.0	817.3	809.3	8		
RT-2H	Trackhoe	MW-09978	1/22/2015	Still in use	Gauging/LNAPL Recovery	819.12	822.17	8.35	NA	4	10.00	809.9	3.90	12.25	1.7	10.0	818.3	809.9	8		
RT-2I	Trackhoe	MW-09978	1/22/2015	Still in use	Gauging/LNAPL Recovery	817.47	819.80	10.20	NA	4	10.00	809.1	2.67	10.67	2.0	10.0	817.1	809.1	8		
RT-2K	Trackhoe	MW-09978	3/20/2015	Still in use	Gauging/LNAPL Recovery	816.11	818.38	10.22	NA	4	10.00	807.5	2.91	10.91	2.0	10.0	815.5	807.5	8		
RT-2L	Trackhoe	MW-09978	3/20/2015	Still in use	Gauging/LNAPL Recovery	817.97	820.35	6.60	NA	4	3.71	814.3	3.89	3.89	6.60	1.0	3.7	815.1	813.6	2	
Piezometers																					
TW-01	DPT	MW-09921	12/11/2014	12/22/2014	Gauging	854.87	853.87	6.85	2.2	1	7.2	846.7	1.85	6.85	2.2	7.2	851.7	846.7	5		
TW-02	DPT	MW-09921	12/11/2014	12/22/2014	Gauging	854.54	854.54	14.09	2.2	1	14	840.5	9.09	14.09	9.0	14.1	845.5	840.5	5		
TW-03	DPT	MW-09921	12/11/2014	12/22/2014	Gauging	855.68	855.67	12.00	2.2	1	11.7	844.0	7.00	12.00	6.7	12.0	849.0	843.7	5		
TW-04	DPT	MW-09921	12/11/2014	12/22/2014	Gauging	852.77	852.77	5.15	2.2	1	5.5	847.3	2.15	5.15	2.5	5.1	850.3	847.6	3		
TW-04R	DPT	MW-10006	2/4/2015	Still in use	Gauging	852.71	852.86	5.46	2.2	1	5.5	847.2	2.46	5.46	2.5	5.3	850.2	847.4	3		
TW-05	DPT	MW-09921	12/11/2014	12/22/2014	Gauging	846.94	849.94	9.00	2.2	1	8.8	840.6	4.00	9.00	4.3	9.0	845.6	840.9	5		
TW-05R	DPT	MW-10006	2/4/2015	Still in use	Gauging	849.95	850.17	8.87	2.2	1	8.8	841.2	2.87	8.87	2.8	8.7	847.2	841.3	6		
TW-06	DPT	MW-09921	12/11/2014	12/22/2014	Gauging	848.08	848.08	15.00	2.2	1	15	834.1	5.00	15.00	5.0	15.0	843.1	833.1	10		
TW-07	DPT	MW-09921	12/11/2014	12/22/2014	Gauging	845.58	845.59	18.83	2.2	1	20	825.6	8.83	18.83	11.0	20.0	835.6	826.8	10		
TW-08	DPT	MW-09921	12/11/2014	12/22/2014	Gauging	847.51	847.51	19.98	2.2	1	21	826.5	9.98	19.98	11.0	20.0	836.5	827.5	10		
TW-09	DPT	MW-09921	12/11/2014	12/22/2014	Gauging	841.76	842.76	19.75	2.2	1	19	833.8	4.75	19.75	4.0	19.6	838.6	833.0	15		
TW-10	DPT	MW-09921	12/11/2014	12/22/2014	Gauging	844.13	844.14	24.10	2.2	1	25	819.1	9.10	24.10	10.0	24.1	834.1	820.0	15		
TW-11	DPT	MW-09921	12/19/2014	12/22/2014	Gauging	853.74	853.96	14.97	2.2	1	15	838.7	11.97	14.97	12.0	14.7	841.7	839.0	3		
TW-12	DPT	MW-09921	12/19/2014	12/22/2014	Gauging	855.29	855.47	8.15	2.2	1	8	847.3	3.15	8.15	3.0	8.0	852.3	847.3	5		
TW-13	DPT	MW-09921	12/19/2014	12/22/2014	Gauging	853.99	854.07	10.00	2.2	1	10	844.0	5.00	10.00	5.0	9.9	849.0	844.1	5		
TW-14	DPT	MW-09921	12/19/2014	12/22/2014	Gauging	853.46	853.60	5.95	2.2	1	6.5	847.0	1.95	5.95	2.5	5.8	851.0	847.7	4		
TW-14R	DPT	MW-10006	2/4/2015	Still in use	Gauging	853.53	853.60	6.20	2.2	1	6.5	847.0	2.20	6.20	2.5	6.1	851.0	847.4	4		
TW-15	DPT	MW-09921	12/19/2014	12/22/2014	Gauging	856.67	850.78	5.64	2.2	1	5	845.7	1.64	5.64	1.0	5.5	849.7	845.1	4		
TW-15R	DPT	MW-10006	2/4/2015	Still in use	Gauging	850.71	850.73	4.85	2.2	1	5	845.7	1.85	4.85	2.0	4.8	848.7	845.9	3		
TW-16	DPT	MW-09921	12/19/2014	12/22/2014	Gauging	847.03	847.17	22.50	2.2	1	23	824.0	12.50	22.50	13.0	22.4	834.0	824.3	10		
TW-17	DPT	MW-09921	12/19/2014	12/22/2014	Gauging	845.12	845.31	26.98	2.2	1	25	820.1	16.98	26.98	15.0	20.8	830.1	824.3	10		
TW-18	DPT	MW-09921	12/19/2014	12/22/2014	Gauging	849.72	849.42	20.21	2.2	1	20.5	818.7	16.21	20.21	10.5	20.0	828.7	819.2	10		
TW-19	DPT	MW-09921	12/19/2014	12/22/2014	Gauging	844.48	844.48	21.15	2.2	1	21	823.5	11.15	21.15	11.0	21.0	833.5	823.5	10		
TW-20	DPT	MW-09921	12/19/2014	12/22/2014	Gauging	852.45	852.05	22.30	2.2	1	23.7	829.7	12.30	22.30	12.7	22.2	839.7	830.2	10		
TW-21	DPT	MW-09978	1/22/2015	Still in use	Gauging	849.82	852.09	12.71	2.2	1	14	835.8	2.71	12.71	4.0	10.4	845.8	839.4	10		
TW-22	DPT	MW-09978	1/22/2015	Still in use	Gauging	850.85	851.79	10.92	2.2	1	10	840.8	5.92	10.92	5.0	10.0	849.8	840.9	5		
TW-23	DPT	MW-09978	1/22/2015	Still in use	Gauging	851.40	852.92	14.72	2.2	1	14	837.4	4.72	14.72	4.0	13.2	847.4	838.2	10		
TW-24	DPT	MW-09978	1/22/2015	Still in use	Gauging	852.44	854.13	17.41	2.2	1	16	836.4	12.41	17.41	11.0	15.7	841.4	836.7	5		
TW-25	DPT	MW-09978	1/22/2015	Still in use	Gauging	849.83	851.92	10.25	2.2	1	8	841.8	5.25	10.25	4.0	8.2	846.8	841.7	5		
TW-26	DPT	MW-09978	1/22/2015	Still in use	Gauging	849.55	850.30	11.57	2.2	1	11.00	838.6	7.57	12.57	6.0	11.8	843.8	837.7	5		
TW-27	DPT	MW-09978	1/22/2015	Still in use	Gauging	850.09	851.93	31.30	2.2	1	31.00	819.1	11.30	31.30	11.0	26.5	839.1	820.6	20		
TW-28	DPT	MW-09978	1/23/2015	Still in use	Gauging	851.62	853.92	31.84	2.2	1	30	821.6	11.84	31.84	10.0	29.5	841.6	822.1	20		
TW-29	DPT	MW-09978	1/23/2015	Still in use	Gauging	850.22	851.85	24.68	2.2	1	23.00	827.2	9.68	24.68	8.0	23.1	842.2	827.2	15		

Table 1. Well Construction Information
 Plantation Pipe Line Company
 Lewis Drive Release, Belton, South Carolina
 Site ID #18693 "Kinder Morgan Belton Pipeline Release"

Location ID	Installation Method	Permit #	Date Installed	Date Abandoned	Purpose	Ground		Measured		Well Depth (ft)	Bottom of Well (ft AMSL)	Top of Screen (ft BTOC)	Bottom of Screen (ft BTOC)	Top of Screen (ft BGS)	Bottom of Screen (ft BGS)	Top of Screen (ft AMSL)	Bottom of Screen (ft AMSL)	Screened Length (ft)
						Surface Elevation (ft AMSL)	TOC Elevation (ft AMS)	Bottom (ft BTOC)	Bore Hole Diameter (in)									
TW-30	DPT	MMW-09978	1/23/2015	Still in use	Gauging	852.02	852.99	25.05	2.2	24	828.0	10.05	25.05	9.0	24.1	843.0	827.9	15
TW-31	DPT	MMW-09978	1/23/2015	10/19/2015	Gauging	854.28	856.07	20.04	2.2	16	838.3	10.04	20.04	6.0	18.3	848.3	836.0	10
TW-32	DPT	MMW-09978	1/23/2015	10/19/2015	Gauging	854.54	856.19	30.05	2.2	26.5	828.0	10.05	30.05	6.5	28.4	848.0	836.1	20
TW-33	DPT	MMW-09978	1/24/2015	10/19/2015	Gauging	852.90	854.48	23.03	2.2	21	831.9	8.03	23.03	6.0	21.5	846.9	831.4	15
TW-34	DPT	MMW-09978	1/24/2015	Still in use	Gauging	855.13	857.41	25.04	2.2	23	832.1	10.04	25.04	8.0	22.8	847.1	832.4	15
TW-35	DPT	MMW-09978	1/24/2015	Still in use	Gauging	854.32	856.31	25.12	2.2	23	831.3	10.12	25.12	8.0	23.1	846.3	831.2	15
TW-36	DPT	MMW-09978	1/24/2015	10/19/2015	Gauging	851.09	853.60	28.02	2.2	26	827.1	8.02	28.02	6.0	26.5	847.1	836.6	20
TW-37	DPT	MMW-09978	1/24/2015	10/19/2015	Gauging	851.90	853.42	33.08	2.2	31.50	819.4	8.08	33.08	7.5	31.6	844.4	820.3	25
TW-38	DPT	MMW-09978	1/24/2015	10/19/2015	Gauging	854.12	855.65	17.81	2.2	16	838.1	7.81	17.81	6.0	16.3	848.1	837.8	10
TW-39	DPT	MMW-09978	1/24/2015	10/19/2015	Gauging	853.11	852.82	37.91	2.2	37.00	814.1	12.91	37.91	12.0	36.2	839.1	814.9	25
TW-40	DPT	MMW-09978	1/24/2015	Still in use	Gauging	853.50	854.56	34.05	2.2	33	820.5	14.05	34.05	13.0	33.0	840.5	820.5	20
TW-41	DPT	MMW-09978	1/25/2015	Still in use	Gauging	849.10	850.68	33.58	2.2	34	815.1	8.58	33.58	9.0	32.0	840.1	817.1	25
TW-42	DPT	MMW-09978	1/25/2015	Still in use	Gauging	846.78	848.99	39.80	2.2	29.5	817.3	19.80	39.80	9.5	37.6	837.3	809.2	20
TW-43	DPT	MMW-09978	1/25/2015	10/19/2015	Gauging	847.64	850.52	21.60	2.2	18	829.6	11.60	21.60	8.0	18.7	839.6	828.9	10
TW-44	DPT	MMW-09978	1/25/2015	Still in use	Gauging	848.31	850.38	36.86	2.2	32	810.8	11.86	36.86	12.5	34.8	835.8	813.5	25
TW-45	DPT	MMW-09978	1/25/2015	Still in use	Gauging	846.78	848.83	33.44	2.2	31.4	814.8	13.44	33.44	12.0	31.4	834.8	815.4	20
TW-46	DPT	MMW-09978	1/26/2015	Still in use	Gauging	854.07	856.26	29.81	2.2	27	827.1	14.81	29.81	12.0	27.6	842.1	826.4	15
TW-47	DPT	MMW-09978	1/26/2015	10/19/2015	Gauging	844.18	846.23	39.22	2.2	39.00	805.2	14.22	39.22	14.0	37.2	830.2	807.0	20
TW-48	DPT	MMW-09978	1/27/2015	10/20/2015	Gauging	833.32	835.57	25.50	2.2	27.00	806.3	5.50	25.50	7.0	23.3	826.3	810.1	20
TW-49	DPT	MMW-09978	1/27/2015	10/20/2015	Gauging	833.42	835.30	24.31	2.2	23	810.4	4.31	24.31	3.0	22.4	830.4	811.0	20
TW-50	DPT	MMW-09978	1/27/2015	10/20/2015	Gauging	844.44	844.86	34.59	2.2	34	809.4	9.59	34.59	4.0	33.2	834.4	810.3	25
TW-51	DPT	MMW-09978	1/27/2015	2/16/2015	Gauging	828.89	828.33	45.30	2.2	41.00	798.9	3.58	23.58	7.0	21.1	818.9	804.7	20
TW-52	DPT	MMW-09978	1/28/2015	2/13/2015	Gauging	NS	NS	2.7	1	47.00	NS	5.20	45.20	3.0	43.0	NS	NS	20
TW-53	DPT	MMW-10006	2/14/2015	10/19/2015	Gauging	844.08	845.05	59.26	2.2	59	785.1	9.26	59.26	9.0	58.3	835.1	785.8	50
TW-54	DPT	MMW-10006	2/14/2015	Still in use	Gauging	845.95	847.25	43.00	2.2	43	802.9	13.00	43.00	13.0	41.7	832.9	804.2	30
TW-55	DPT	MMW-10006	2/14/2015	10/20/2015	Gauging	844.16	846.91	20.23	2.2	17	827.2	10.23	20.23	7.0	17.5	837.2	826.7	10
TW-56	DPT	MMW-09978	1/29/2015	2/12/2015	Gauging	NS	NS	40.22	2.2	1	NS	5.22	40.22	4.8	39.8	NS	NS	35
TW-57	DPT	MMW-09978	1/29/2015	10/20/2015	Gauging	832.27	834.78	20.00	2.2	20	812.3	5.00	20.00	5.0	17.5	827.2	814.8	15
TW-58	DPT	MMW-09978	1/30/2015	Still in use	Gauging	834.98	836.74	22.00	2.2	22	813.0	7.00	22.00	7.0	20.2	828.0	814.7	15
TW-59	DPT	MMW-09978	1/30/2015	Still in use	Gauging	828.00	829.84	40.40	2.2	41.5	786.5	5.40	40.40	6.5	38.6	821.5	789.4	35
TW-60	DPT	MMW-09978	1/30/2015	10/20/2015	Gauging	846.08	847.50	10.25	2.2	9	837.1	5.25	10.25	4.0	8.8	842.1	837.3	5
TW-61	DPT	MMW-09978	2/12/2015	10/20/2015	Gauging	850.87	851.45	40.40	2.2	35	815.9	10.40	40.40	5.0	39.8	845.9	811.0	30
TW-62	DPT	MMW-09978	2/12/2015	10/20/2015	Gauging	827.86	826.39	41.30	2.2	42	780.9	1.30	41.30	4.0	37.8	820.9	785.1	40
TW-63	DPT	MMW-09978	2/12/2015	10/20/2015	Gauging	846.03	848.06	56.43	2.2	55	791.0	6.43	56.43	5.0	54.4	841.0	791.6	50
TW-64	DPT	MMW-09978	2/12/2015	Still in use	Gauging	845.78	847.30	44.81	2.2	44.5	801.3	9.81	44.81	9.5	43.3	836.3	802.5	35
TW-65	DPT	MMW-09978	2/12/2015	Still in use	Gauging	828.25	822.70	29.70	2.2	24	796.2	9.70	29.70	4.0	27.2	816.2	793.0	20
TW-66	DPT	MMW-09978	2/13/2015	Still in use	Gauging	853.27	855.01	26.31	2.2	27	826.3	6.31	26.31	7.0	24.6	846.3	828.7	20
TW-67	DPT	MMW-09978	2/13/2015	Still in use	Gauging	846.69	849.73	29.96	2.2	27	819.7	9.96	29.96	7.0	26.9	839.7	819.8	20
TW-68	DPT	MMW-09978	2/13/2015	Still in use	Gauging	840.41	842.62	51.91	2.2	50	790.4	11.91	51.91	10.0	49.7	830.4	790.7	40
TW-69	DPT	MMW-09978	2/13/2015	Still in use	Gauging	842.23	844.61	45.05	2.2	43	792.2	10.05	45.05	8.0	42.7	834.2	799.6	35
TW-70	DPT	MMW-09978	2/13/2015	Still in use	Gauging	NS	NS	17.39	2.2	1	14.00	NS	17.39	1.0	14.0	NS	NS	5
TW-71	DPT	MMW-09978	2/13/2015	Still in use	Gauging	850.21	851.94	6.51	2.2	9.00	841.2	1.51	6.51	4.0	5.2	846.2	845.0	10
TW-72	DPT	MMW-09978	2/13/2015	Still in use	Gauging	853.25	853.25	6.05	2.2	5	848.2	3.05	6.05	2.0	4.0	844.5	835.9	5
TW-73	DPT	MMW-09978	2/13/2015	Still in use	Gauging	853.25	853.25	6.05	2.2	5	848.2	3.05	6.05	2.0	4.0	844.5	835.9	5
TW-74	DPT	MMW-10006	2/14/2015	10/19/2015	Gauging	853.48	854.32	43.62	2.2	43	809.5	8.62	43.62	3.0	31.8	845.5	810.7	30
TW-75	DPT	MMW-10006	2/14/2015	Still in use	Gauging	853.48	854.32	43.62	2.2	43	809.5	8.62	43.62	3.0	31.8	845.5	810.7	30
TW-76	DPT	MMW-10006	2/14/2015	10/20/2015	Gauging	853.48	854.32	43.62	2.2	43	809.5	8.62	43.62	3.0	31.8	845.5	810.7	30
TW-77	DPT	MMW-10006	2/14/2015	10/20/2015	Gauging	854.00	854.17	6.95	2.2	7	847.1	2.30	6.95	3.0	6.1	851.1	847.4	4
TW-78	DPT	MMW-10006	2/14/2015	10/20/2015	Gauging	854.00	854.17	6.95	2.2	7	847.1	2.30	6.95	3.0	6.1	851.1	847.4	4
TW-79	DPT	MMW-10006	2/14/2015	10/19/2015	Gauging	852.83	854.19	41.20	2.2	40	812.8	11.20	41.20	10.0	39.8	842.8	813.0	30

Table 1. Well Construction Information

Plantation Pipe Line Company
 Lewis Drive Release, Belton, South Carolina
 Site ID #18693 "Kinder Morgan Belton Pipeline Release"

Location ID	Installation Method	Permit #	Date Installed	Date Abandoned	Purpose	Ground Surface Elevation (ft amsl)	TOC Elevation (ft amsl)	Measured										Screened Length (ft)	
								Depth to Bottom (ft BTOC)	Bore Hole Diameter (in)	Well Dia (in)	Well Depth (ft bgs)	Bottom of Well (ft amsl)	Top of Screen (ft BTOC)	Bottom of Screen (ft BTOC)	Top of Screen (ft bgs)	Bottom of Screen (ft bgs)	Top of Screen (ft amsl)		Bottom of Screen (ft amsl)
TW-80	DPT	MW-10006	2/5/2015	10/20/2015	Gauging	849.25	849.45	7.00	2.2	1	7	842.5	2.00	7.00	2.0	6.9	847.5	842.5	5
TW-81	DPT	MW-10006	2/5/2015	Still in use	Gauging	849.52	849.64	7.00	2.2	1	7	842.5	2.00	7.00	2.0	6.9	847.5	842.6	5
TW-82	DPT	MW-10006	2/5/2015	Still in use	Gauging	849.76	849.93	10.00	2.2	1	10	839.8	2.00	10.00	2.0	9.8	848.8	839.9	8
TW-83	DPT	MW-10006	2/5/2015	Still in use	Gauging	850.66	850.66	17.00	2.2	1	17	833.7	2.00	17.00	2.0	17.0	848.7	833.7	15
TW-84	DPT	MW-10006	2/5/2015	Still in use	Gauging	851.38	851.55	13.50	2.2	1	13.5	837.9	3.50	13.50	3.5	13.3	847.9	838.0	10
TW-85	DPT	MW-10006	2/5/2015	Still in use	Gauging	843.62	845.39	39.00	2.7	1	39	804.6	9.00	39.00	-9.0	37.2	834.6	806.4	30
TW-86	DPT	MW-10006	2/5/2015	Still in use	Gauging	853.16	853.31	6.00	2.2	1	6	847.2	2.00	6.00	2.0	5.8	851.2	847.3	4
TW-87	DPT	MW-10006	2/5/2015	Still in use	Gauging	852.38	852.53	7.00	2.2	1	7	845.4	2.00	7.00	2.0	6.9	850.4	845.5	5
TW-88	DPT	MW-10006	2/5/2015	10/19/2015	Gauging	842.76	844.07	33.00	2.7	1	33	809.8	8.00	33.00	8.0	31.7	834.8	811.1	25
TW-89	DPT	MW-10006	2/5/2015	10/19/2015	Gauging	844.61	846.55	40.00	2.7	1	40	804.6	5.00	40.00	5.0	38.1	839.6	806.5	35
TW-90	DPT	MW-10006	2/6/2015	Still in use	Gauging	845.57	847.03	46.50	2.7	1	46.5	799.1	6.50	46.50	6.5	45.0	839.1	800.5	40
TW-91	DPT	MW-10006	2/6/2015	10/19/2015	Gauging	846.24	847.76	37.00	2.7	1	37	809.2	7.00	37.00	7.0	35.5	839.2	810.8	30
TW-92	DPT	MW-10006	2/10/2015	10/19/2015	Gauging	841.67	842.11	45.00	2.7	1	45	796.7	5.00	45.00	5.0	44.6	836.7	797.1	40
TW-93	DPT	MW-10006	2/10/2015	10/19/2015	Gauging	843.66	843.68	50.00	2.7	1	50	791.1	10.00	50.00	10.0	49.8	833.1	793.7	40
TW-94	DPT	MW-10006	2/10/2015	Still in use	Gauging	840.66	840.74	40.00	2.7	1	40	800.7	5.00	40.00	5.0	39.9	835.7	800.7	35
TW-95	DPT	MW-10006	2/10/2015	10/19/2015	Gauging	840.36	840.44	45.00	2.7	1	45	795.3	15.00	45.00	15.0	44.8	832.3	795.4	35
TW-96	DPT	MW-10006	2/11/2015	Still in use	Gauging	840.42	840.81	30.00	2.7	1	30	810.4	5.00	30.00	5.0	29.6	835.4	810.8	25
TW-97	DPT	MW-10006	2/11/2015	10/19/2015	Gauging	841.49	844.77	42.00	2.7	1	42	798.4	12.00	42.00	12.0	38.6	829.4	802.8	30
TW-98	DPT	MW-10006	2/11/2015	10/20/2015	Gauging	847.68	847.99	27.00	2.7	1	27	820.7	2.00	27.00	2.0	26.7	845.7	821.0	25

Notes:

¹ Coordinates provided in South Carolina State Plane Coordinate System, North American Datum of 1983 (NAD83) (2011).

Grayed rows indicate wells that have been abandoned.

amsl = above mean sea level relative to North American Vertical Datum of 1988 (NAVD88). Benchmark is 34 deg 49'44.27745", 82 deg 22'15.72744" NAD83 (2011), elevation 929.1 ft NAVD88

bgs = below ground surface

in = inches

NA = not applicable

NS = location not surveyed

RNE = Refusal not encountered

ft = feet

TOC = top of casing

HSA = hollow-stem auger

Table 2. Groundwater Elevation and Product Thickness Data

Plantation Pipe Line Company

Lewis Drive Release, Belton, South Carolina

Site ID #18693 "Kinder Morgan Belton Pipeline Release"

Location ID	Date	Depth to Product (ft BTOC)	Depth to Water (ft BTOC)	Product Thickness (ft)	Top of Casing Elevation (ft amsl)	Groundwater Elevation (ft amsl)	Corrected¹ Groundwater Elevation (ft amsl)
MW-01					853.07		
	1/29/2016	-	3.46	-		849.61	-
	1/26/2016	-	3.19	-		849.88	-
	1/21/2016	-	3.70	-		849.37	-
	1/19/2016	-	3.67	-		849.40	-
	1/18/2016	-	3.36	-		849.71	-
	1/15/2016	-	3.38	-		849.69	-
	1/11/2016	-	3.60	-		849.47	-
	1/8/2016	-	3.56	-		849.51	-
	1/4/2016	-	3.42	-		849.65	-
	1/2/2016	-	3.02	-		850.05	-
MW-01B					852.99		
	1/29/2016	-	6.40	-		846.59	-
	1/26/2016	-	4.05	-		848.94	-
	1/21/2016	-	4.25	-		848.74	-
	1/19/2016	-	4.25	-		848.74	-
	1/18/2016	-	4.30	-		848.69	-
	1/15/2016	-	4.30	-		848.69	-
	1/11/2016	-	4.55	-		848.44	-
	1/8/2016	-	4.52	-		848.47	-
	1/4/2016	-	4.60	-		848.39	-
	1/2/2016	-	4.75	-		848.24	-
MW-02					841.04		
	1/29/2016	-	1.23	-		839.81	-
	1/26/2016	1.71	1.73	0.02		839.31	839.33
	1/21/2016	1.73	1.75	0.02		839.29	839.31
	1/19/2016	-	1.61	-		839.43	-
	1/18/2016	-	1.55	-		839.49	-
	1/15/2016	-	1.41	-		839.63	-
	1/11/2016	-	1.46	-		839.58	-
	1/8/2016	-	1.50	-		839.54	-
	1/4/2016	-	1.07	-		839.97	-
	1/2/2016	-	1.00	-		840.04	-
MW-02B					841.18		
	1/29/2016	-	1.44	-		839.74	-
	1/26/2016	-	2.03	-		839.15	-
	1/21/2016	-	2.05	-		839.13	-
	1/19/2016	1.91	1.96	0.05		839.22	839.25
	1/18/2016	-	-	-		841.18	-
	1/15/2016	-	1.74	-		839.44	-
	1/11/2016	-	1.84	-		839.34	-
	1/8/2016	-	1.80	-		839.38	-
	1/4/2016	-	1.15	-		840.03	-
	1/2/2016	-	1.08	-		840.10	-

Table 2. Groundwater Elevation and Product Thickness Data

Plantation Pipe Line Company

Lewis Drive Release, Belton, South Carolina

Site ID #18693 "Kinder Morgan Belton Pipeline Release"

Location ID	Date	Depth to Product (ft BTOC)	Depth to Water (ft BTOC)	Product Thickness (ft)	Top of Casing Elevation (ft amsl)	Groundwater Elevation (ft amsl)	Corrected ¹ Groundwater Elevation (ft amsl)
MW-03					838.36		
	1/29/2016	-	1.45	-		836.91	-
	1/26/2016	-	2.08	-		836.28	-
	1/21/2016	-	2.11	-		836.25	-
	1/19/2016	-	1.99	-		836.37	-
	1/18/2016	-	2.00	-		836.36	-
	1/15/2016	-	2.35	-		836.01	-
	1/11/2016	-	2.40	-		835.96	-
	1/8/2016	-	2.41	-		835.95	-
	1/4/2016	-	2.70	-		835.66	-
	1/2/2016	-	2.64	-		835.72	-
MW-04					844.42		
	1/29/2016	-	3.40	-		841.02	-
	1/26/2016	-	4.02	-		840.40	-
	1/21/2016	4.00	4.01	0.01		840.41	840.42
	1/19/2016	-	3.82	-		840.60	-
	1/18/2016	-	3.65	-		840.77	-
	1/15/2016	-	3.00	-		841.42	-
	1/11/2016	-	3.58	-		840.84	-
	1/8/2016	-	3.52	-		840.90	-
	1/4/2016	-	2.91	-		841.51	-
	1/2/2016	-	2.83	-		841.59	-
MW-05					851.11		
	1/29/2016	-	6.22	-		844.89	-
	1/26/2016	-	6.80	-		844.31	-
	1/21/2016	-	6.88	-		844.23	-
	1/19/2016	-	6.89	-		844.22	-
	1/18/2016	-	6.85	-		844.26	-
	1/15/2016	-	6.52	-		844.59	-
	1/11/2016	-	6.72	-		844.39	-
	1/8/2016	-	6.64	-		844.47	-
	1/4/2016	-	7.01	-		844.10	-
	1/2/2016	-	6.90	-		844.21	-
MW-06					852.92		
	1/29/2016	-	7.35	-		845.57	-
	1/26/2016	-	7.85	-		845.07	-
	1/21/2016	-	7.92	-		845.00	-
	1/19/2016	-	8.02	-		844.90	-
	1/18/2016	-	8.07	-		844.85	-
	1/15/2016	-	8.27	-		844.65	-
	1/11/2016	-	8.28	-		844.64	-
	1/8/2016	-	8.33	-		844.59	-
	1/4/2016	-	8.65	-		844.27	-
	1/2/2016	-	8.77	-		844.15	-

Table 2. Groundwater Elevation and Product Thickness Data

Plantation Pipe Line Company

Lewis Drive Release, Belton, South Carolina

Site ID #18693 "Kinder Morgan Belton Pipeline Release"

Location ID	Date	Depth to Product (ft BTOC)	Depth to Water (ft BTOC)	Product Thickness (ft)	Top of	Groundwater Elevation (ft amsl)	Corrected ¹
					Casing Elevation (ft amsl)		Groundwater Elevation (ft amsl)
MW-07					853.02		
	1/29/2016	-	7.15	-		845.87	-
	1/26/2016	-	7.62	-		845.40	-
	1/21/2016	-	7.70	-		845.32	-
	1/19/2016	-	7.76	-		845.26	-
	1/18/2016	-	7.81	-		845.21	-
	1/15/2016	-	8.11	-		844.91	-
	1/11/2016	-	8.11	-		844.91	-
	1/8/2016	-	8.18	-		844.84	-
	1/4/2016	-	8.32	-		844.70	-
	1/2/2016	-	8.20	-		844.82	-
MW-08					844.72		
	1/29/2016	2.99	3.00	0.01		841.72	841.73
	1/26/2016	-	3.20	-		841.52	-
	1/21/2016	-	3.30	-		841.42	-
	1/19/2016	-	3.09	-		841.63	-
	1/18/2016	-	3.32	-		841.40	-
	1/15/2016	-	5.27	-		839.45	-
	1/11/2016	-	3.35	-		841.37	-
	1/8/2016	-	3.39	-		841.33	-
	1/4/2016	-	3.07	-		841.65	-
	1/2/2016	-	3.15	-		841.57	-
MW-09					843.63		
	1/29/2016	0.85	4.26	3.41		839.37	841.86
	1/26/2016	1.60	5.13	3.53		838.50	841.08
	1/21/2016	1.65	5.18	3.53		838.45	841.03
	1/19/2016	1.47	5.00	3.53		838.63	841.21
	1/18/2016	1.40	5.12	3.72		838.51	841.23
	1/15/2016	1.35	4.61	3.26		839.02	841.40
	1/11/2016	1.50	4.84	3.34		838.79	841.23
	1/8/2016	1.41	4.81	3.40		838.82	841.30
	1/4/2016	1.51	4.86	3.35		838.77	841.22
	1/2/2016	1.63	4.91	3.28		838.72	841.12
MW-10					845.41		
	1/29/2016	-	5.05	-		840.36	-
	1/26/2016	-	4.93	-		840.48	-
	1/21/2016	-	5.62	-		839.79	-
	1/19/2016	-	5.63	-		839.78	-
	1/18/2016	-	5.53	-		839.88	-
	1/15/2016	-	5.31	-		840.10	-
	1/11/2016	-	5.49	-		839.92	-
	1/8/2016	-	5.40	-		840.01	-
	1/4/2016	-	5.01	-		840.40	-
	1/2/2016	-	5.23	-		840.18	-

Table 2. Groundwater Elevation and Product Thickness Data

Plantation Pipe Line Company

Lewis Drive Release, Belton, South Carolina

Site ID #18693 "Kinder Morgan Belton Pipeline Release"

Location ID	Date	Depth to Product (ft BTOC)	Depth to Water (ft BTOC)	Product Thickness (ft)	Top of Casing Elevation (ft amsl)	Groundwater Elevation (ft amsl)	Corrected ¹ Groundwater Elevation (ft amsl)
MW-11					855.63		
	1/29/2016	-	22.70	-		832.93	-
	1/26/2016	-	22.90	-		832.73	-
	1/21/2016	-	23.20	-		832.43	-
	1/19/2016	-	23.35	-		832.28	-
	1/18/2016	-	23.36	-		832.27	-
	1/15/2016	-	23.55	-		832.08	-
	1/11/2016	-	23.57	-		832.06	-
	1/8/2016	-	23.60	-		832.03	-
	1/4/2016	-	23.96	-		831.67	-
	1/2/2016	-	24.28	-		831.35	-
MW-12					834.53		
	1/29/2016	9.65	10.30	0.65		824.23	824.71
	1/26/2016	9.56	10.20	0.64		824.33	824.80
	1/21/2016	9.98	10.80	0.82		823.73	824.33
	1/19/2016	9.99	10.85	0.86		823.68	824.31
	1/18/2016	9.92	10.80	0.88		823.73	824.38
	1/15/2016	9.72	10.79	1.07		823.74	824.52
	1/11/2016	9.78	10.84	1.06		823.69	824.47
	1/8/2016	9.81	10.91	1.10		823.62	824.43
	1/4/2016	9.59	10.60	1.01		823.93	824.67
	1/2/2016	9.68	10.72	1.04		823.81	824.57
MW-12B					NS		
	1/19/2016	-	10.55	-		NS	-
MW-13					848.84		
	1/29/2016	-	14.96	-		833.88	-
	1/26/2016	-	15.35	-		833.49	-
	1/21/2016	-	15.42	-		833.42	-
	1/19/2016	-	15.54	-		833.30	-
	1/18/2016	-	15.63	-		833.21	-
	1/15/2016	-	15.58	-		833.26	-
	1/11/2016	-	15.81	-		833.03	-
	1/8/2016	-	15.69	-		833.15	-
	1/4/2016	-	15.96	-		832.88	-
	1/2/2016	-	15.99	-		832.85	-
MW-13B					NS		
	1/19/2016	-	16.60	-		NS	-
MW-14					838.70		
	1/29/2016	-	11.15	-		827.55	-
	1/26/2016	-	11.50	-		827.20	-
	1/21/2016	-	11.62	-		827.08	-
	1/19/2016	-	11.61	-		827.09	-
	1/18/2016	-	11.60	-		827.10	-
	1/15/2016	-	10.96	-		827.74	-
	1/11/2016	-	11.12	-		827.58	-
	1/8/2016	-	11.00	-		827.70	-
	1/4/2016	-	10.70	-		828.00	-
	1/2/2016	-	10.80	-		827.90	-

Table 2. Groundwater Elevation and Product Thickness Data

Plantation Pipe Line Company

Lewis Drive Release, Belton, South Carolina

Site ID #18693 "Kinder Morgan Belton Pipeline Release"

Location ID	Date	Depth to Product (ft BTOC)	Depth to Water (ft BTOC)	Product Thickness (ft)	Top of Casing Elevation (ft amsl)	Groundwater Elevation (ft amsl)	Corrected ¹ Groundwater Elevation (ft amsl)
MW-15					831.03		
	1/29/2016	-	9.58	-		821.45	-
	1/26/2016	-	9.41	-		821.62	-
	1/21/2016	-	9.84	-		821.19	-
	1/19/2016	-	9.77	-		821.26	-
	1/18/2016	-	9.70	-		821.33	-
	1/15/2016	-	9.53	-		821.50	-
	1/11/2016	-	9.65	-		821.38	-
	1/8/2016	-	9.62	-		821.41	-
	1/4/2016	-	9.34	-		821.69	-
	1/2/2016	-	9.50	-		821.53	-
MW-15B					831.29		
	1/29/2016	-	16.05	-		815.24	-
	1/26/2016	-	14.91	-		816.38	-
	1/21/2016	-	15.10	-		816.19	-
	1/19/2016	-	15.03	-		816.26	-
	1/18/2016	-	15.04	-		816.25	-
	1/15/2016	-	15.01	-		816.28	-
	1/11/2016	-	15.21	-		816.08	-
	1/8/2016	-	15.14	-		816.15	-
	1/4/2016	-	14.90	-		816.39	-
	1/2/2016	-	14.70	-		816.59	-
MW-16					847.67		
	1/29/2016	4.99	5.00	0.01		842.67	842.67
	1/26/2016	5.27	5.67	0.40		842.00	842.29
	1/21/2016	5.35	5.75	0.40		841.92	842.21
	1/19/2016	5.41	5.99	0.58		841.68	842.10
	1/18/2016	-	-	-		847.67	-
	1/15/2016	5.77	6.06	0.29		841.61	841.82
	1/11/2016	5.88	6.52	0.64		841.15	841.61
	1/8/2016	5.84	6.50	0.66		841.17	841.65
	1/4/2016	6.20	6.94	0.74		840.73	841.27
	1/2/2016	6.31	7.02	0.71		840.65	841.16
MW-17					855.35		
	1/29/2016	-	8.87	-		846.48	-
	1/26/2016	-	9.08	-		846.27	-
	1/21/2016	-	9.25	-		846.10	-
	1/19/2016	9.28	9.29	0.01		846.06	846.06
	1/18/2016	-	9.25	-		846.10	-
	1/15/2016	-	9.30	-		846.05	-
	1/11/2016	-	9.45	-		845.90	-
	1/8/2016	-	9.41	-		845.94	-
	1/4/2016	-	9.47	-		845.88	-
	1/2/2016	-	9.61	-		845.74	-
MW-17B					NS		
	1/19/2016	10.15	11.55	1.40	NS	NS	NS

Table 2. Groundwater Elevation and Product Thickness Data

Plantation Pipe Line Company

Lewis Drive Release, Belton, South Carolina

Site ID #18693 "Kinder Morgan Belton Pipeline Release"

Location ID	Date	Depth to Product (ft BTOC)	Depth to Water (ft BTOC)	Product Thickness (ft)	Top of Casing Elevation (ft amsl)	Groundwater Elevation (ft amsl)	Corrected ¹ Groundwater Elevation (ft amsl)
MW-18					846.89		
	1/29/2016	7.72	10.25	2.53		836.64	838.48
	1/26/2016	7.59	10.40	2.81		836.49	838.54
	1/21/2016	7.67	10.49	2.82		836.40	838.45
	1/19/2016	7.52	10.21	2.69		836.68	838.64
	1/18/2016	7.70	10.50	2.80		836.39	838.43
	1/15/2016	8.03	10.68	2.65		836.21	838.14
	1/11/2016	8.18	10.84	2.66		836.05	837.99
	1/8/2016	8.12	10.80	2.68		836.09	838.04
	1/4/2016	7.91	10.68	2.77		836.21	838.23
	1/2/2016	8.00	10.74	2.74		836.15	838.15
MW-19					853.94		
	1/29/2016	-	4.62	-		849.32	-
	1/26/2016	-	6.83	-		847.11	-
	1/21/2016	-	6.95	-		846.99	-
	1/19/2016	-	4.59	-		849.35	-
	1/18/2016	4.36	4.90	0.54		849.04	849.43
	1/15/2016	-	4.93	-		849.01	-
	1/11/2016	-	5.09	-		848.85	-
	1/8/2016	-	5.02	-		848.92	-
	1/4/2016	-	4.15	-		849.79	-
	1/2/2016	-	3.60	-		850.34	-
MW-20					852.89		
	1/29/2016	5.43	9.40	3.97		843.49	846.38
	1/26/2016	6.00	9.40	3.40		843.49	845.97
	1/21/2016	6.12	9.50	3.38		843.39	845.85
	1/19/2016	6.19	9.81	3.62		843.08	845.72
	1/18/2016	6.05	9.73	3.68		843.16	845.84
	1/15/2016	-	-	-		852.89	-
	1/11/2016	5.77	9.68	3.91		843.21	846.06
	1/8/2016	5.82	9.75	3.93		843.14	846.00
	1/4/2016	5.62	9.80	4.18		843.09	846.14
	1/2/2016	5.73	9.92	4.19		842.97	846.02
MW-21					855.77		
	1/29/2016	10.34	10.35	0.01		845.42	845.42
	1/26/2016	-	10.69	-		845.08	-
	1/21/2016	-	10.81	-		844.96	-
	1/19/2016	-	10.88	-		844.89	-
	1/18/2016	10.79	10.80	0.01		844.97	844.97
	1/15/2016	-	10.66	-		845.11	-
	1/11/2016	-	10.70	-		845.07	-
	1/8/2016	-	10.75	-		845.02	-
	1/4/2016	-	10.75	-		845.02	-
	1/2/2016	-	10.88	-		844.89	-

Table 2. Groundwater Elevation and Product Thickness Data

Plantation Pipe Line Company

Lewis Drive Release, Belton, South Carolina

Site ID #18693 "Kinder Morgan Belton Pipeline Release"

Location ID	Date	Depth to Product (ft BTOC)	Depth to Water (ft BTOC)	Product Thickness (ft)	Top of Casing Elevation (ft amsl)	Groundwater Elevation (ft amsl)	Corrected ¹ Groundwater Elevation (ft amsl)
MW-22					854.60		
	1/29/2016	-	4.82	-		849.78	-
	1/26/2016	-	4.12	-		850.48	-
	1/21/2016	-	4.40	-		850.20	-
	1/19/2016	-	4.16	-		850.44	-
	1/18/2016	-	4.04	-		850.56	-
	1/15/2016	-	4.02	-		850.58	-
	1/11/2016	-	4.31	-		850.29	-
	1/8/2016	-	4.20	-		850.40	-
	1/4/2016	-	4.34	-		850.26	-
	1/2/2016	-	4.52	-		850.08	-
MW-23					849.57		
	1/29/2016	-	4.46	-		845.11	-
	1/26/2016	-	4.73	-		844.84	-
	1/21/2016	-	4.80	-		844.77	-
	1/19/2016	-	4.89	-		844.68	-
	1/18/2016	-	4.77	-		844.80	-
	1/15/2016	-	4.53	-		845.04	-
	1/11/2016	-	4.75	-		844.82	-
	1/8/2016	-	4.72	-		844.85	-
	1/4/2016	-	4.66	-		844.91	-
	1/2/2016	-	4.46	-		845.11	-
MW-23B					849.69		
	1/29/2016	-	5.85	-		843.84	-
	1/26/2016	-	6.70	-		842.99	-
	1/21/2016	-	6.86	-		842.83	-
	1/19/2016	-	5.37	-		844.32	-
	1/18/2016	-	5.42	-		844.27	-
	1/15/2016	-	5.98	-		843.71	-
	1/11/2016	-	6.16	-		843.53	-
	1/8/2016	-	6.10	-		843.59	-
	1/4/2016	-	6.62	-		843.07	-
	1/2/2016	-	6.65	-		843.04	-
MW-24					817.92		
	1/29/2016	-	4.59	-		813.33	-
	1/26/2016	-	4.46	-		813.46	-
	1/21/2016	-	4.51	-		813.41	-
	1/19/2016	-	4.48	-		813.44	-
	1/18/2016	-	4.46	-		813.46	-
	1/15/2016	-	4.60	-		813.32	-
	1/11/2016	-	4.80	-		813.12	-
	1/8/2016	-	4.72	-		813.20	-
	1/4/2016	-	4.73	-		813.19	-
	1/2/2016	-	4.79	-		813.13	-

Table 2. Groundwater Elevation and Product Thickness Data

Plantation Pipe Line Company

Lewis Drive Release, Belton, South Carolina

Site ID #18693 "Kinder Morgan Belton Pipeline Release"

Location ID	Date	Depth to Product (ft BTOC)	Depth to Water (ft BTOC)	Product Thickness (ft)	Top of Casing Elevation (ft amsl)	Groundwater Elevation (ft amsl)	Corrected ¹ Groundwater Elevation (ft amsl)
MW-24B					818.72		
	1/29/2016	-	5.40	-		813.32	-
	1/26/2016	-	5.28	-		813.44	-
	1/21/2016	-	5.32	-		813.40	-
	1/19/2016	-	5.32	-		813.40	-
	1/18/2016	-	5.42	-		813.30	-
	1/15/2016	-	5.51	-		813.21	-
	1/11/2016	-	5.70	-		813.02	-
	1/8/2016	-	5.60	-		813.12	-
	1/4/2016	-	5.62	-		813.10	-
	1/2/2016	-	5.69	-		813.03	-
MW-25					NS		
	1/19/2016	-	6.82	-		NS	-
MW-25B					NS		
	1/19/2016	-	6.93	-		NS	-
MW-26					NS		
	1/19/2016	-	1.11	-		NS	-
MW-26B					NS		
	1/19/2016	-	0.59	-		NS	-
MW-27					NS		
	1/19/2016	-	19.69	-		NS	-
MW-28					NS		
	1/19/2016	-	19.15	-		NS	-
MW-29					NS		
	1/19/2016	-	2.65	-		NS	-
MW-30					NS		
	1/19/2016	-	7.14	-		NS	-
RS-01					850.33		
	1/29/2016	6.42	6.89	0.47		843.44	843.79
	1/26/2016	6.61	6.95	0.34		843.38	843.63
	1/21/2016	7.11	7.20	0.09		843.13	843.20
	1/18/2016	7.28	7.36	0.08		842.97	843.03
	1/15/2016	6.85	6.89	0.04		843.44	843.47
	1/11/2016	7.32	7.36	0.04		842.97	843.00
	1/8/2016	7.30	7.40	0.10		842.93	843.01
	1/4/2016	7.40	7.52	0.12		842.81	842.90
	1/2/2016	7.35	7.45	0.10		842.88	842.96
RS-02					850.38		
	1/29/2016	5.58	5.76	0.18		844.62	844.75
	1/26/2016	5.97	6.20	0.23		844.18	844.34
	1/21/2016	6.08	6.27	0.19		844.11	844.25
	1/18/2016	6.43	6.75	0.32		843.63	843.86
	1/15/2016	6.00	6.20	0.20		844.18	844.32
	1/11/2016	6.54	6.80	0.26		843.58	843.77
	1/8/2016	6.50	6.75	0.25		843.63	843.81
	1/4/2016	6.42	6.70	0.28		843.68	843.88
	1/2/2016	6.36	6.68	0.32		843.70	843.93

Table 2. Groundwater Elevation and Product Thickness Data

Plantation Pipe Line Company

Lewis Drive Release, Belton, South Carolina

Site ID #18693 "Kinder Morgan Belton Pipeline Release"

Location ID	Date	Depth to Product (ft BTOC)	Depth to Water (ft BTOC)	Product Thickness (ft)	Top of Casing Elevation (ft amsl)	Groundwater Elevation (ft amsl)	Corrected ¹ Groundwater Elevation (ft amsl)
RS-04					851.65		
	1/29/2016	-	4.75	-		846.90	-
	1/26/2016	-	5.31	-		846.34	-
	1/21/2016	-	5.42	-		846.23	-
	1/18/2016	-	5.65	-		846.00	-
	1/15/2016	-	5.01	-		846.64	-
	1/11/2016	-	5.42	-		846.23	-
	1/8/2016	-	5.32	-		846.33	-
	1/4/2016	-	4.80	-		846.85	-
	1/2/2016	-	4.69	-		846.96	-
RS-05					848.55		
	1/29/2016	5.99	6.09	0.10		842.46	842.53
	1/26/2016	6.57	6.61	0.04		841.94	841.97
	1/21/2016	6.64	6.73	0.09		841.82	841.88
	1/18/2016	6.80	6.94	0.14		841.61	841.71
	1/15/2016	6.71	6.82	0.11		841.73	841.81
	1/11/2016	7.15	7.28	0.13		841.27	841.36
	1/8/2016	7.08	7.20	0.12		841.35	841.44
	1/4/2016	7.42	7.68	0.26		840.87	841.06
	1/2/2016	7.32	7.61	0.29		840.94	841.15
RS-06					850.97		
	1/29/2016	7.13	7.29	0.16		843.68	843.80
	1/26/2016	7.35	7.45	0.10		843.52	843.59
	1/21/2016	7.71	7.84	0.13		843.13	843.22
	1/18/2016	8.13	8.31	0.18		842.66	842.79
	1/15/2016	7.96	8.13	0.17		842.84	842.96
	1/11/2016	8.40	8.50	0.10		842.47	842.54
	1/8/2016	8.33	8.51	0.18		842.46	842.59
	1/4/2016	8.55	8.74	0.19		842.23	842.37
	1/2/2016	8.47	8.62	0.15		842.35	842.46
RS-07					856.29		
	1/29/2016	8.13	8.22	0.09		848.07	848.13
	1/26/2016	8.20	8.25	0.05		848.04	848.08
	1/21/2016	8.26	8.36	0.10		847.93	848.00
	1/18/2016	8.94	9.10	0.16		847.19	847.31
	1/15/2016	8.23	8.34	0.11		847.95	848.03
	1/11/2016	8.62	8.69	0.07		847.60	847.65
	1/8/2016	8.56	8.65	0.09		847.64	847.70
	1/4/2016	8.13	8.21	0.08		848.08	848.14
	1/2/2016	8.05	8.15	0.10		848.14	848.21
RS-08					855.19		
	1/29/2016	-	8.16	-		847.03	-
	1/26/2016	-	8.25	-		846.94	-
	1/21/2016	-	8.70	-		846.49	-
	1/18/2016	-	8.64	-		846.55	-
	1/15/2016	-	8.30	-		846.89	-
	1/11/2016	-	8.86	-		846.33	-
	1/8/2016	-	8.80	-		846.39	-
	1/4/2016	-	8.60	-		846.59	-
	1/2/2016	-	8.51	-		846.68	-

Table 2. Groundwater Elevation and Product Thickness Data

Plantation Pipe Line Company

Lewis Drive Release, Belton, South Carolina

Site ID #18693 "Kinder Morgan Belton Pipeline Release"

Location ID	Date	Depth to Product (ft BTOC)	Depth to Water (ft BTOC)	Product Thickness (ft)	Top of Casing Elevation (ft amsl)	Groundwater Elevation (ft amsl)	Corrected ¹ Groundwater Elevation (ft amsl)
RS-09					849.12		
	1/29/2016	-	7.98	-		841.14	-
	1/26/2016	-	8.25	-		840.87	-
	1/21/2016	8.62	8.92	0.30		840.20	840.42
	1/18/2016	8.69	9.20	0.51		839.92	840.29
	1/15/2016	8.69	9.04	0.35		840.08	840.34
	1/11/2016	9.01	9.32	0.31		839.80	840.03
	1/8/2016	8.92	9.28	0.36		839.84	840.10
	1/4/2016	9.20	9.56	0.36		839.56	839.82
	1/2/2016	9.13	9.50	0.37		839.62	839.89
RS-10					847.52		
	1/29/2016	-	5.35	-		842.17	-
	1/26/2016	-	6.62	-		840.90	-
	1/21/2016	-	6.00	-		841.52	-
	1/18/2016	-	6.28	-		841.24	-
	1/15/2016	-	6.19	-		841.33	-
	1/11/2016	-	6.71	-		840.81	-
	1/8/2016	-	6.65	-		840.87	-
	1/4/2016	-	7.05	-		840.47	-
	1/2/2016	-	6.94	-		840.58	-
RS-11					848.41		
	1/29/2016	-	5.95	-		842.46	-
	1/26/2016	-	6.57	-		841.84	-
	1/21/2016	-	6.59	-		841.82	-
	1/18/2016	-	6.80	-		841.61	-
	1/15/2016	-	7.07	-		841.34	-
	1/11/2016	-	7.30	-		841.11	-
	1/8/2016	-	7.25	-		841.16	-
	1/4/2016	-	7.68	-		840.73	-
	1/2/2016	-	7.56	-		840.85	-
RS-12					848.87		
	1/29/2016	6.40	6.42	0.02		842.45	842.46
	1/26/2016	-	6.92	-		841.95	-
	1/21/2016	-	7.03	-		841.84	-
	1/18/2016	-	7.30	-		841.57	-
	1/15/2016	-	7.41	-		841.46	-
	1/11/2016	-	7.82	-		841.05	-
	1/8/2016	-	7.75	-		841.12	-
	1/4/2016	-	8.18	-		840.69	-
	1/2/2016	-	7.98	-		840.89	-
RS-13					848.28		
	1/29/2016	-	6.64	-		841.64	-
	1/26/2016	-	7.77	-		840.51	-
	1/21/2016	-	7.89	-		840.39	-
	1/18/2016	-	7.72	-		840.56	-
	1/15/2016	-	7.50	-		840.78	-
	1/11/2016	-	7.87	-		840.41	-
	1/8/2016	-	7.85	-		840.43	-
	1/4/2016	-	6.75	-		841.53	-
	1/2/2016	-	6.88	-		841.40	-

Table 2. Groundwater Elevation and Product Thickness Data

Plantation Pipe Line Company

Lewis Drive Release, Belton, South Carolina

Site ID #18693 "Kinder Morgan Belton Pipeline Release"

Location ID	Date	Depth to Product (ft BTOC)	Depth to Water (ft BTOC)	Product Thickness (ft)	Top of Casing Elevation (ft amsl)	Groundwater Elevation (ft amsl)	Corrected ¹ Groundwater Elevation (ft amsl)
RS-14					846.92		
	1/29/2016	-	4.49	-		842.43	-
	1/26/2016	-	5.09	-		841.83	-
	1/21/2016	-	5.13	-		841.79	-
	1/18/2016	-	5.10	-		841.82	-
	1/15/2016	-	4.89	-		842.03	-
	1/11/2016	-	5.17	-		841.75	-
	1/8/2016	-	5.10	-		841.82	-
	1/4/2016	-	4.70	-		842.22	-
	1/2/2016	-	4.90	-		842.02	-
RS-15					848.97		
	1/29/2016	-	6.45	-		842.52	-
	1/26/2016	-	6.58	-		842.39	-
	1/21/2016	-	6.98	-		841.99	-
	1/18/2016	-	6.95	-		842.02	-
	1/15/2016	-	5.74	-		843.23	-
	1/11/2016	-	-	-		848.97	-
	1/8/2016	-	6.96	-		842.01	-
	1/4/2016	-	6.70	-		842.27	-
	1/2/2016	-	6.92	-		842.05	-
RS-16					846.77		
	1/29/2016	-	4.52	-		842.25	-
	1/26/2016	-	4.86	-		841.91	-
	1/21/2016	-	5.08	-		841.69	-
	1/18/2016	-	4.90	-		841.87	-
	1/15/2016	-	4.47	-		842.30	-
	1/11/2016	-	5.01	-		841.76	-
	1/8/2016	-	4.90	-		841.87	-
	1/4/2016	-	4.43	-		842.34	-
	1/2/2016	-	4.60	-		842.17	-
RS-17					845.15		
	1/29/2016	-	3.46	-		841.69	-
	1/26/2016	-	4.04	-		841.11	-
	1/21/2016	-	4.15	-		841.00	-
	1/18/2016	-	3.82	-		841.33	-
	1/15/2016	-	3.77	-		841.38	-
	1/11/2016	-	3.94	-		841.21	-
	1/8/2016	-	3.90	-		841.25	-
	1/4/2016	-	3.42	-		841.73	-
	1/2/2016	-	3.57	-		841.58	-
RS-18					848.59		
	1/29/2016	-	6.70	-		841.89	-
	1/26/2016	-	7.35	-		841.24	-
	1/21/2016	-	7.44	-		841.15	-
	1/18/2016	-	7.41	-		841.18	-
	1/15/2016	-	7.36	-		841.23	-
	1/11/2016	-	7.65	-		840.94	-
	1/8/2016	-	7.60	-		840.99	-
	1/4/2016	-	7.70	-		840.89	-
	1/2/2016	-	7.91	-		840.68	-

Table 2. Groundwater Elevation and Product Thickness Data

Plantation Pipe Line Company

Lewis Drive Release, Belton, South Carolina

Site ID #18693 "Kinder Morgan Belton Pipeline Release"

Location ID	Date	Depth to Product (ft BTOC)	Depth to Water (ft BTOC)	Product Thickness (ft)	Top of Casing Elevation (ft amsl)	Groundwater Elevation (ft amsl)	Corrected ¹ Groundwater Elevation (ft amsl)
RS-19					852.37		
	1/29/2016	-	2.73	-		849.64	-
	1/26/2016	-	2.70	-		849.67	-
	1/21/2016	-	2.76	-		849.61	-
	1/18/2016	-	2.80	-		849.57	-
	1/15/2016	-	2.71	-		849.66	-
	1/11/2016	-	2.98	-		849.39	-
	1/8/2016	-	2.91	-		849.46	-
	1/4/2016	-	2.75	-		849.62	-
	1/2/2016	-	3.05	-		849.32	-
RS-20					851.99		
	1/29/2016	-	3.82	-		848.17	-
	1/26/2016	-	3.68	-		848.31	-
	1/21/2016	-	4.39	-		847.60	-
	1/18/2016	-	4.06	-		847.93	-
	1/15/2016	-	3.90	-		848.09	-
	1/11/2016	-	4.22	-		847.77	-
	1/8/2016	-	4.11	-		847.88	-
	1/4/2016	-	3.54	-		848.45	-
	1/2/2016	-	3.71	-		848.28	-
RT-1A					856.21		
	1/29/2016	9.92	10.15	0.23		846.06	846.23
	1/26/2016	10.00	10.22	0.22		845.99	846.15
	1/21/2016	10.40	10.79	0.39		845.42	845.71
	1/18/2016	10.40	11.15	0.75		845.06	845.61
	1/15/2016	10.15	10.31	0.16		845.90	846.02
	1/11/2016	10.35	10.65	0.30		845.56	845.78
	1/8/2016	10.31	10.62	0.31		845.59	845.82
	1/4/2016	10.21	10.52	0.31		845.69	845.92
	1/2/2016	10.30	10.60	0.30		845.61	845.83
RT-1B					857.30		
	1/29/2016	10.95	11.20	0.25		846.10	846.28
	1/26/2016	11.04	11.22	0.18		846.08	846.21
	1/21/2016	11.44	11.80	0.36		845.50	845.76
	1/18/2016	11.43	12.20	0.77		845.10	845.66
	1/15/2016	11.17	11.59	0.42		845.71	846.01
	1/11/2016	11.39	11.70	0.31		845.60	845.82
	1/8/2016	11.35	11.65	0.30		845.65	845.86
	1/4/2016	11.25	11.55	0.30		845.75	845.96
	1/2/2016	11.31	11.63	0.32		845.67	845.90
RT-1C					857.02		
	1/29/2016	10.70	10.95	0.25		846.07	846.25
	1/26/2016	10.80	11.01	0.21		846.01	846.16
	1/21/2016	11.19	11.60	0.41		845.42	845.72
	1/18/2016	11.20	11.65	0.45		845.37	845.70
	1/15/2016	10.99	11.27	0.28		845.75	845.95
	1/11/2016	11.14	11.43	0.29		845.59	845.80
	1/8/2016	11.10	11.40	0.30		845.62	845.84
	1/4/2016	11.00	11.30	0.30		845.72	845.94
	1/2/2016	11.11	11.37	0.26		845.65	845.84

Table 2. Groundwater Elevation and Product Thickness Data

Plantation Pipe Line Company

Lewis Drive Release, Belton, South Carolina

Site ID #18693 "Kinder Morgan Belton Pipeline Release"

Location ID	Date	Depth to Product (ft BTOC)	Depth to Water (ft BTOC)	Product Thickness (ft)	Top of Casing Elevation (ft amsl)	Groundwater Elevation (ft amsl)	Corrected ¹ Groundwater Elevation (ft amsl)
RT-2A					818.31		
	1/29/2016	-	1.50	-		816.81	-
	1/26/2016	-	1.42	-		816.89	-
	1/21/2016	-	1.40	-		816.91	-
	1/18/2016	-	-	-		818.31	-
	1/15/2016	-	1.58	-		816.73	-
	1/11/2016	-	1.71	-		816.60	-
	1/8/2016	-	1.66	-		816.65	-
	1/4/2016	-	1.59	-		816.72	-
	1/2/2016	-	1.81	-		816.50	-
RT-2B					818.92		
	1/29/2016	-	2.08	-		816.84	-
	1/26/2016	-	2.09	-		816.83	-
	1/21/2016	-	2.09	-		816.83	-
	1/18/2016	-	2.09	-		816.83	-
	1/15/2016	-	2.12	-		816.80	-
	1/11/2016	-	2.29	-		816.63	-
	1/8/2016	-	2.25	-		816.67	-
	1/4/2016	-	2.30	-		816.62	-
	1/2/2016	-	2.52	-		816.40	-
RT-2C					819.02		
	1/29/2016	-	1.80	-		817.22	-
	1/26/2016	-	1.85	-		817.17	-
	1/21/2016	-	1.80	-		817.22	-
	1/18/2016	2.08	2.15	0.07		816.87	816.92
	1/15/2016	2.15	2.23	0.08		816.79	816.84
	1/11/2016	2.25	2.33	0.08		816.69	816.74
	1/8/2016	2.20	2.30	0.10		816.72	816.79
	1/4/2016	2.24	2.40	0.16		816.62	816.73
	1/2/2016	2.50	2.58	0.08		816.44	816.49
RT-2D					819.59		
	1/29/2016	-	2.62	-		816.97	-
	1/26/2016	-	2.65	-		816.94	-
	1/21/2016	-	2.63	-		816.96	-
	1/18/2016	2.65	2.95	0.30		816.64	816.86
	1/15/2016	2.65	2.80	0.15		816.79	816.90
	1/11/2016	2.75	2.81	0.06		816.78	816.83
	1/8/2016	2.79	2.90	0.11		816.69	816.77
	1/4/2016	-	2.84	-		816.75	-
	1/2/2016	-	3.09	-		816.50	-
RT-2E					819.40		
	1/29/2016	-	2.43	-		816.97	-
	1/26/2016	-	2.49	-		816.91	-
	1/21/2016	-	2.35	-		817.05	-
	1/18/2016	2.45	2.60	0.15		816.80	816.91
	1/15/2016	-	2.39	-		817.01	-
	1/11/2016	-	2.50	-		816.90	-
	1/8/2016	-	2.55	-		816.85	-
	1/4/2016	-	2.62	-		816.78	-
	1/2/2016	-	2.85	-		816.55	-

Table 2. Groundwater Elevation and Product Thickness Data

Plantation Pipe Line Company

Lewis Drive Release, Belton, South Carolina

Site ID #18693 "Kinder Morgan Belton Pipeline Release"

Location ID	Date	Depth to Product (ft BTOC)	Depth to Water (ft BTOC)	Product Thickness (ft)	Top of Casing Elevation (ft amsl)	Groundwater Elevation (ft amsl)	Corrected ¹ Groundwater Elevation (ft amsl)
RT-2F					819.52		
	1/29/2016	-	2.22	-		817.30	-
	1/26/2016	-	2.30	-		817.22	-
	1/21/2016	-	2.68	-		816.84	-
	1/18/2016	2.57	2.59	0.02		816.93	816.94
	1/15/2016	-	2.65	-		816.87	-
	1/11/2016	-	2.68	-		816.84	-
	1/8/2016	-	2.71	-		816.81	-
	1/4/2016	2.75	2.99	0.24		816.53	816.70
1/2/2016	-	3.02	-		816.50	-	
RT-2G					820.31		
	1/29/2016	-	1.15	-		819.16	-
	1/26/2016	-	1.15	-		819.16	-
	1/21/2016	-	1.49	-		818.82	-
	1/18/2016	-	1.39	-		818.92	-
	1/15/2016	-	1.31	-		819.00	-
	1/11/2016	-	1.42	-		818.89	-
	1/8/2016	-	1.40	-		818.91	-
	1/4/2016	-	1.38	-		818.93	-
1/2/2016	-	1.40	-		818.91	-	
RT-2H					822.17		
	1/29/2016	-	3.52	-		818.65	-
	1/26/2016	-	3.51	-		818.66	-
	1/21/2016	-	3.51	-		818.66	-
	1/18/2016	-	3.53	-		818.64	-
	1/15/2016	-	3.40	-		818.77	-
	1/11/2016	-	3.46	-		818.71	-
	1/8/2016	-	3.52	-		818.65	-
	1/4/2016	-	3.50	-		818.67	-
1/2/2016	-	3.50	-		818.67	-	
RT-2I					819.80		
	1/29/2016	-	0.90	-		818.90	-
	1/26/2016	-	0.88	-		818.92	-
	1/21/2016	-	1.15	-		818.65	-
	1/18/2016	-	1.15	-		818.65	-
	1/15/2016	-	1.05	-		818.75	-
	1/11/2016	-	1.24	-		818.56	-
	1/8/2016	-	1.18	-		818.62	-
	1/4/2016	-	0.89	-		818.91	-
1/2/2016	-	0.93	-		818.87	-	
RT-2J					818.38		
	1/29/2016	-	1.09	-		817.29	-
	1/26/2016	-	1.09	-		817.29	-
	1/21/2016	-	1.38	-		817.00	-
	1/18/2016	-	1.40	-		816.98	-
	1/15/2016	-	1.33	-		817.05	-
	1/11/2016	-	1.47	-		816.91	-
	1/8/2016	-	1.45	-		816.93	-
	1/4/2016	-	0.80	-		817.58	-
1/2/2016	-	2.50	-		815.88	-	

Table 2. Groundwater Elevation and Product Thickness Data

Plantation Pipe Line Company

Lewis Drive Release, Belton, South Carolina

Site ID #18693 "Kinder Morgan Belton Pipeline Release"

Location ID	Date	Depth to Product (ft BTOC)	Depth to Water (ft BTOC)	Product Thickness (ft)	Top of Casing Elevation (ft amsl)	Groundwater Elevation (ft amsl)	Corrected ¹ Groundwater Elevation (ft amsl)
RT-2K					817.46		
	1/29/2016	-	0.91	-		816.55	-
	1/26/2016	-	0.90	-		816.56	-
	1/21/2016	-	1.04	-		816.42	-
	1/18/2016	-	0.91	-		816.55	-
	1/15/2016	-	0.92	-		816.54	-
	1/11/2016	-	1.19	-		816.27	-
	1/8/2016	-	1.10	-		816.36	-
	1/4/2016	-	1.31	-		816.15	-
	1/2/2016	-	2.34	-		815.12	-
RT-2L					820.35		
	1/29/2016	-	2.28	-		818.07	-
	1/26/2016	-	2.29	-		818.06	-
	1/21/2016	-	2.32	-		818.03	-
	1/18/2016	-	2.30	-		818.05	-
	1/15/2016	-	2.21	-		818.14	-
	1/11/2016	-	2.38	-		817.97	-
	1/8/2016	-	2.30	-		818.05	-
	1/4/2016	-	2.05	-		818.30	-
	1/2/2016	3.30	4.10	0.80		816.25	816.83
RW-01					851.92		
	1/29/2016	-	6.78	-		845.14	-
	1/26/2016	-	6.71	-		845.21	-
	1/21/2016	-	6.60	-		845.32	-
	1/18/2016	-	7.00	-		844.92	-
	1/15/2016	-	6.51	-		845.41	-
	1/11/2016	-	6.92	-		845.00	-
TW-40					854.56		
	1/11/2016	-	24.40	-		830.16	-
TW-41					850.68		
	1/11/2016	-	21.98	-		828.70	-
TW-42					848.99		
	1/11/2016	20.95	23.50	2.55		825.49	827.35
TW-45					850.38		
	1/11/2016	23.04	23.68	0.64		826.70	827.17
TW-46					848.83		
	1/11/2016	-	21.03	-		827.80	-
TW-55					847.25		
	1/11/2016	-	3.94	-		843.31	-
TW-59					836.74		
	1/11/2016	-	10.50	-		826.24	-
TW-60					829.84		
	1/11/2016	-	5.45	-		824.39	-
TW-64					848.06		
	1/11/2016	-	10.48	-		837.58	-
TW-65					847.30		
	1/11/2016	-	15.90	-		831.40	-
TW-66					822.70		
	1/11/2016	-	-	-		822.70	-

Table 2. Groundwater Elevation and Product Thickness Data

Plantation Pipe Line Company

Lewis Drive Release, Belton, South Carolina

Site ID #18693 "Kinder Morgan Belton Pipeline Release"

Location ID	Date	Depth to Product (ft BTOC)	Depth to Water (ft BTOC)	Product Thickness (ft)	Top of Casing Elevation (ft amsl)	Groundwater Elevation (ft amsl)	Corrected¹ Groundwater Elevation (ft amsl)
TW-67	1/11/2016	-	7.40	-	855.01	847.61	-
TW-68	1/11/2016	-	18.52	-	849.73	831.21	-
TW-69	1/11/2016	-	8.13	-	842.62	834.49	-
TW-70	1/11/2016	-	12.40	-	844.61	832.21	-
TW-73	1/11/2016	-	3.09	-	851.94	848.85	-
TW-76	1/11/2016	-	8.65	-	854.32	845.67	-
TW-81	1/11/2016	-	0.40	-	849.64	849.24	-
TW-82	1/11/2016	-	-	-	849.93	849.93	-
TW-83	1/11/2016	-	0.60	-	850.66	850.06	-
TW-84	1/11/2016	-	2.70	-	851.55	848.85	-
TW-85	1/11/2016	-	3.41	-	845.39	841.98	-
TW-86	1/11/2016	-	2.85	-	853.31	850.46	-
TW-87	1/11/2016	-	2.08	-	852.53	850.45	-
TW-90	1/11/2016	-	7.51	-	847.03	839.52	-
TW-94	1/11/2016	1.25	2.07	0.82	840.74	838.67	839.27
TW-96	1/11/2016	-	2.22	-	840.81	838.59	-

Notes:

¹ Calculated based on an oil:water density ratio of 0.73

amsl = above mean sea level

BTOC = below top of casing

ft = feet

NS = elevation not yet surveyed