



CH2M Raleigh
3120 Highwoods Boulevard
Suite 214
Raleigh, NC 27604
O +1 919 875 4311
F +1 919 875 8491
www.ch2m.com

October 26, 2016

Delivered via FedEx

Ms. Bobbi Coleman
South Carolina Department of Health and Environmental Control (SCDHEC)
Assessment Section, UST Management Division
Bureau of Land and Waste Management
2600 Bull Street
Columbia, SC 29201



Subject: **Lewis Drive – Monthly Status Update**
Plantation Pipe Line Company
Belton, South Carolina
Site ID #18693, “Kinder Morgan Belton Pipeline Release”

Dear Ms. Coleman,

On behalf of Plantation Pipe Line Company, CH2M is submitting the attached Monthly Status Update covering activities conducted in September 2016 at the Lewis Drive site. If you have any questions or concerns, please call me at 919-760-1777, Mr. Scott Powell/CH2M at 678-530-4457, or Mr. Jerry Aycock/Plantation at 770-751-4165.

Regards,
CH2M HILL Engineers, Inc.

William M. Waldron, P.E.
Senior Project Manager

Enclosures

- Monthly Status Update including:
 - Figure 1 – Groundwater and Surface Water Elevation Map
 - Figure 2 – Product Thickness Map
 - Table 1 – Well Construction Information
 - Table 2 – Stream Gauge Information
 - Table 3 – Analytical Results for Surface Water
 - Table 4 – Groundwater Elevation and Product Thickness Data
 - Surface Water Analytical Laboratory Report
 - Groundwater Analytical Laboratory Report

Cc (via e-mail):

Jerry Aycock, Plantation, Jerry_Aycock@kindermorgan.com
Mary Clair Lyons, Esq., Plantation, Mary_Lyons@kindermorgan.com
Richard Morton, Esq., Womble Carlyle Sandridge & Rice, PLLC, rmorton@wcsr.com
File

SCANNED

Monthly Status Update
Plantation Pipe Line Company
Lewis Drive Release
Site ID #18693 “Kinder Morgan Belton Pipeline Release”
September 2016

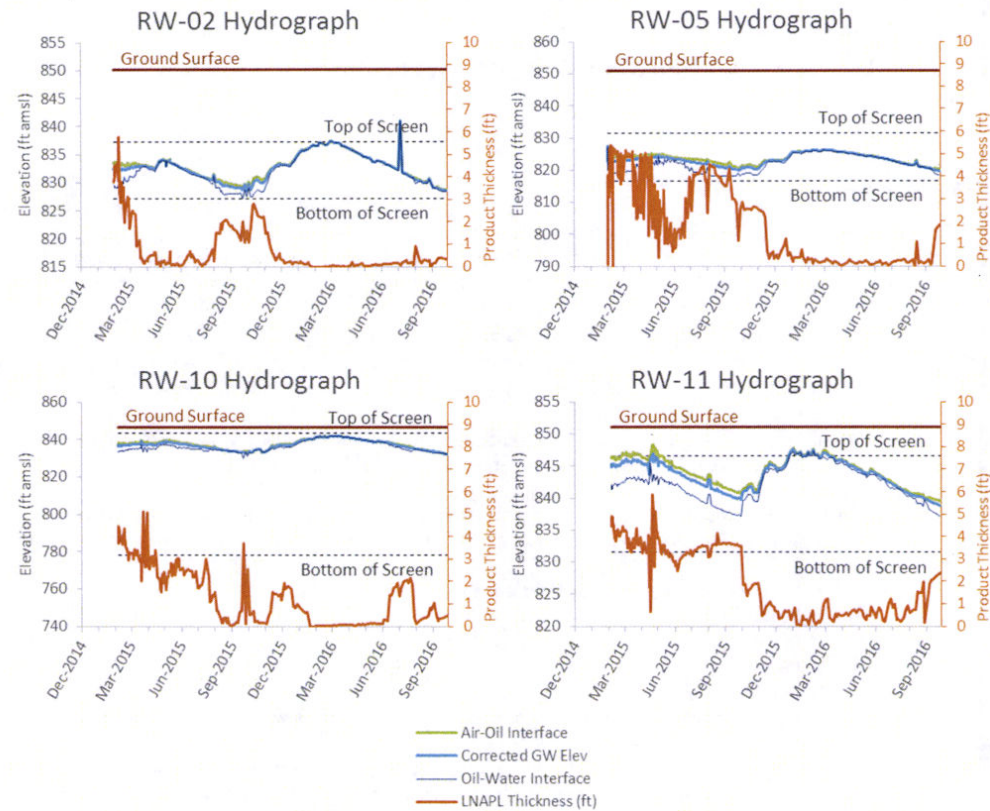
Surface Water

- Routinely inspected Brown’s Creek and Wetland #1 (Cupboard Creek) south of West Calhoun Road for sheen, odor, or distressed vegetation. Vegetation along the bank at two seeps where groundwater impacts Brown’s Creek (in the vicinity of Recovery Trench 2) show signs of distress and odor near the seep; none are noted anywhere else. A photo of the seeps are presented below and the locations are presented on Figures 1 and 2. The route of inspection is indicated on Figure 1.
- No other biota or surface water abnormalities were observed.
- Surface water protection booms were inspected on a biweekly basis and were replaced as needed.
- To date, 26 rounds of surface water samples have been analyzed for benzene, toluene, ethylbenzene, xylenes, and naphthalene (see Table 3).
- Collected 13 surface water samples in August at locations SW-01, SW-02, SW-03, SW-04, SW-08, SW-09, SW-10, SW-11, SW-12, SW-13, FP-01, FP-02, and FP-03 (locations SW-05 and SW-06 in Cupboard Creek and SW-07 off Brown’s Creek were dry).
 - The following concentrations were detected at the surface water sampling location SW-12. SW-12 is located just downgradient of a seep leading to Brown’s Creek. The seep location is plotted on Figures 1 and 2.
 - 7,850 micrograms per liter (µg/L) benzene
 - 1,030 µg/L ethylbenzene
 - 19,000 µg/L toluene
 - 5,860 µg/L total xylenes
 - 143 µg/L naphthalene
 - Benzene remained undetected at the nearest downgradient surface water locations, SW-01 and SW-02, in September.
 - Apart from SW-12, no hydrocarbon constituents were detected above their respective surface water standards in the remaining surface water samples upstream or downstream of SW-12, where impacted groundwater extends to Brown’s Creek. Analytical lab reports are attached.
- Sampled two new shallow monitoring wells (MW-37 and MW-38) installed in August on the southern bank of Brown’s Creek downstream (north) of the culvert underneath Lewis Drive. No constituents exceeded risk-based screening levels for groundwater identified in the South Carolina Underground Storage Tank Management Division Programmatic Quality Assurance Program Plan. Analytical lab reports are attached.
- Stream elevations from staff gauges are tabulated along with groundwater elevations in Table 2 and are depicted on Figure 1.

Product Recovery

- No measureable volume of product has been recovered since early 2016. Recovered 209,314 gallons (4,984 barrels) of product through the end of September 2016. Evacuated product/water from Trench RT-2 installed adjacent to Brown’s Creek and groundwater from recovery sumps on a once per week (usually Monday) schedule. Transferred product/water to a 21,000-gallon frac tank for on-site oil/water separation and delivery off-site to the locations indicated on the table below. The volume of product recovered is measured by gauging the depth of product in the frac tank, and may fluctuate due to volatilization and measuring accuracy.
- Gauged depth to product and depth to water in recovery sumps, trenches, temporary wells, recovery wells, and stream gauges on a routine basis. During the site-wide gauging event on September 9, 2016, 15 wells and sumps had product thicknesses of 0.5 foot or greater. The greatest product thickness was 2.05 feet in RW-11. These locations are all well away from surface water bodies at the site. Groundwater elevation and product thickness data are presented in Table 4 and on Figures 1 and 2.
- Groundwater levels in the area of Recovery Trench 2 were above ground surface. Standing water is retained by a downgradient berm and an absorbent boom that is swapped out as needed (approximately monthly).

- Hydrographs of select wells generally representative of light non-aqueous phase liquid (LNAPL) thickness trends are presented below:



Remedial Design and Construction

- Completed installing 3 horizontal sparging wells of lengths 1,025 ft, 1,024 ft and 666 ft.
- Initiated the excavation of trenches for conveyance piping to the sparging wells.
- Started installing conveyance piping.
- Continued equipment and building fabrication.
- The house at 112 Lewis Drive was removed from its foundation on September 9, 2016, and moved off site to a new location.

Regulatory Interaction

- Submitted a Corrective Action Plan to SCDHEC on September 1, 2016
- Issued this monthly status update to SCDHEC.
- Conducted internal storm water pollution prevention plan (SWPPP) inspections on September 7, 13, 21, and 28.
- Sent letter with subject heading, "Addendum to Additional Monitoring Wells and Surface Water Sampling Locations" on September 7, 2016. Awaiting response.
- Received confirmation from the U.S. Army Corps of Engineers in a letter dated September 14, 2016, that a Department of the Army Permit is not required for the placement of two air diffusion lines in Brown's Creek.

Future Activities

-
- Install 4 additional shallow monitoring wells on the southern bank of Brown's Creek upstream (south) of the culvert under Lewis Drive, as proposed in a letter to SCDHEC on September 7, 2016. These locations have been adjusted based on field conditions. Their revised locations and method of installation were communicated in the September 7 letter, and Plantation is awaiting approval from SCDHEC on the well locations.
 - Continue installing sparging conveyance piping.
 - Gauge recovery wells, recovery sumps, and recovery trenches monthly for depth to groundwater and free product thickness.
 - Evacuate product from product recovery sumps, trenches, and recovery wells weekly if needed.
 - Continue to dispose recovered liquids offsite.
 - Continue routine visual inspections of Brown's Creek and Wetland #1 (Cupboard Creek).
 - Conduct monthly sampling of surface water at 16 pre-determined locations along Brown's Creek and Cupboard Creek.
 - Continue monthly status updates to SCDHEC.
 - Continue coordination with landowners and legal counsel on an as-needed basis.

Wildlife Issues

- None.

Cumulative Product/PCW Recovered

Date	Destination	Total Product (gal)	Date	Destination	Total Product (gal)
12/9/2014	PPL Greensboro	4,289	1/28/2015	Allied Energies	4,411
12/9/2014	PPL Greensboro	3,100	2/5/2015	Allied Energies	5,513
12/12/2014	PPL Greensboro	1,189	2/11/2015	Allied Energies	5,732
12/30/2014	Crystal Clean (FCC)	5,057	2/11/2015	Allied Energies	5,606
12/31/2014	Crystal Clean (FCC)	5,333	2/25/2015	Allied Energies	5,583
1/4/2015	Crystal Clean (FCC)	5,000	3/4/2015	Allied Energies	4,000
1/4/2015	Crystal Clean (FCC)	2,872	3/16/2015	Allied Energies	5,200
1/5/2015	Crystal Clean (FCC)	5,013	6/3/2015	Allied Energies	6,500
1/6/2015	Crystal Clean (FCC)	4,800	6/3/2015	Allied Energies	4,214
1/7/2015	Allied Energies	6,532	8/10/2015	Allied Energies	6,000
1/7/2015	Allied Energies	6,425	11/2/2015	Allied Energies	5,800
1/7/2015	Allied Energies	8,200	11/13/2015	Crystal Clean (FCC)	2,900
1/9/2015	Allied Energies	6,482	12/1/2015	Allied Energies	6,690
1/9/2015	Allied Energies	7,825	12/1/2015	Allied Energies	6,700
1/12/2015	Allied Energies	6,540	12/7/2015	Crystal Clean (FCC)	500
1/12/2015	Allied Energies	6,467	9/27/2016	To be determined (in frac tank on site)	383
1/13/2015	Allied Energies	6,732			
1/13/2015	Allied Energies	6,595			
1/15/2015	Allied Energies	6,500			
1/22/2015	Allied Energies	5,791			
1/23/2015	Allied Energies	5,450			
1/27/2015	Allied Energies	5,791			
1/27/2015	Allied Energies	5,557			
1/27/2015	Allied Energies	6,043			
				Total (gallons)	209,314
				Total (barrels)	4,984

Notes:

- Gasoline and water are field-segregated using a 21,000 gallon frac tank.
- No measureable volume of product has been recovered since the last status update.

Access Agreements

- Mr. Scott Lewis gave verbal approval to conduct needed response activities on his property.
- A formal access agreement was executed with Mr. Patrick O'Dell to install wells on his property. It is assumed that only a minor corner of his property may have been impacted by the release.

Local Authorities On-Site

- SCDHEC performed a site walk on 9/20/2016. The following personnel were in attendance: Bobbi Coleman, Ryan Arial, Steven Martin, Robert Dunn, Josh Maschmeyer.
- Paul Wilkie from the Anderson SCDHEC office performed a site walk on 9/26/2016.

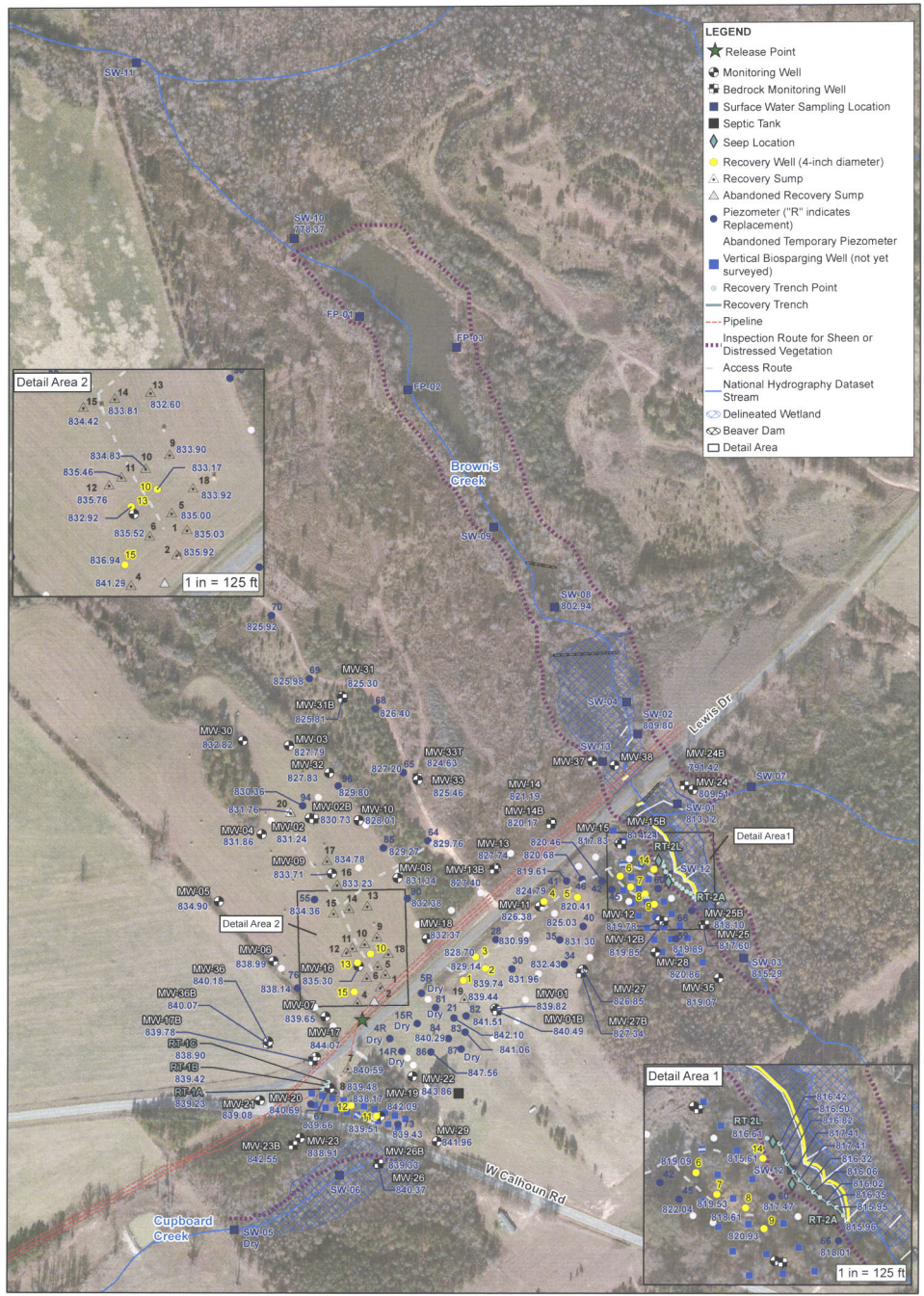
Photographs



9/23/2016: Seep and distressed vegetation upgradient of Brown's Creek in the vicinity of recovery trench riser RT-2F (location identified on Figure 1 and 2)



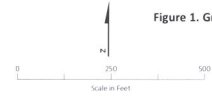
9/23/2016: Seep and distressed vegetation upgradient of Brown's Creek in the vicinity of recovery trench riser RT-2K (location identified on Figure 1 and 2)

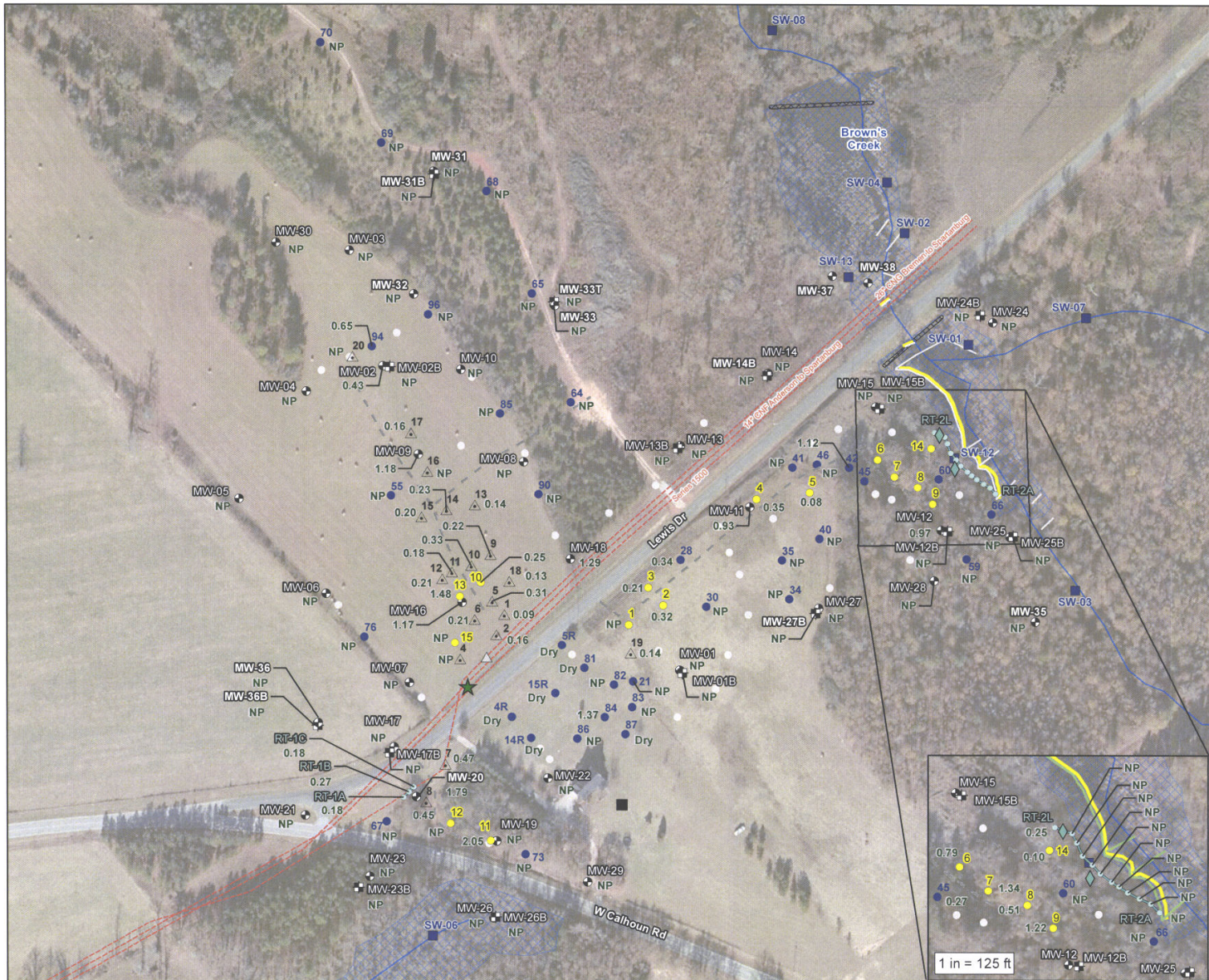


819.85 Corrected Groundwater Elevation as of 09/09/2016 in feet above mean sea level

Note:
 Surface water elevation recorded on 9/29/16 in feet above mean sea level

Base Map Source:
 Environmental Systems Research Institute (ESRI)
 ArcMap World Imagery, 2015
 United States Geological Survey (USGS)
 National Hydrography Dataset (NHD)





LEGEND

- ★ Release Point
- Monitoring Well
- Bedrock Monitoring Well
- ◆ Seep Location
- △ Recovery Sump
- △ Abandoned Recovery Sump
- Piezometer ("R" indicates Replacement)
- Abandoned Temporary Piezometer
- Recovery Well (4-inch diameter)
- Surface Water Sampling Location
- Septic Tank
- Recovery Trench Point
- Recovery Trench
- Surface Water Flow Direction
- Pipeline
- Access Route
- Soft Boom
- Hard Boom
- Stream (NHD)
- ▨ Delineated Wetland
- ▨ Beaver Dam
- ▭ Detail Area

0.14 Product Thickness in feet as of 9/09/2016
 NP No Product detected

Source Data:
 *Environmental Systems Research Institute (ESRI) ArcMap
 World Imagery, 2015
 *United States Geological Survey (USGS) National
 Hydrography Dataset (NHD)

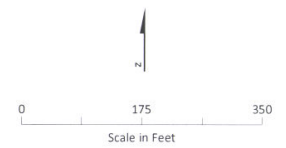


Figure 2. Product Thickness Map
 Lewis Drive Release, Belton, South Carolina
 Site ID #18693
 "Kinder Morgan Belton Pipeline Release"

Table 1. Well Construction Information

Plantation Pipe Line Company

Lewis Drive Release, Belton, South Carolina

Site ID #18693 "Kinder Morgan Belton Pipeline Release"

Location ID	Installation Method	Permit #	Date Installed	Date Abandoned	Purpose	Ground Surface Elevation (ft amsl)	TOC Elevation (ft amsl)	Measured Depth to Bottom (ft BTOC)	Bore Hole Diameter (in)	Well Dia (in)	Well Depth (ft bgs)	Bottom of Well (ft amsl)	Top of	Bottom of	Top of	Bottom of	Top of	Bottom of	Length of Screen or Open Borehole Interval (ft)
													Screen or Open Borehole Interval (ft BTOC)	Screen or Open Borehole Interval (ft BTOC)	Screen or Open Borehole Interval (ft bgs)	Screen or Open Borehole Interval (ft bgs)	Screen or Open Borehole Interval (ft amsl)	Screen or Open Borehole Interval (ft amsl)	
MW-01	CME 550 HSA	MW-10136	6/26/2015	Still in use	Monitoring Well/Gauging	850.25	853.07	15.65	8	2	13.00	837.2	5.82	15.82	3.0	13.0	847.2	837.2	10.00
MW-01B	Schramm Air Rig	MW-10136	6/25/2015	Still in use	Monitoring Well/Gauging	850.45	852.99	44.50	10	6	38.50	812.0	21.03	41.03	18.5	38.5	832.0	812.0	20.00
MW-02	CME 750 HSA	MW-10136	6/25/2015	Still in use	Monitoring Well/Gauging	841.24	841.04	23.14	8	2	20.00	821.2	4.80	19.80	5.0	20.0	836.2	821.2	15.00
MW-02B	Schramm Air Rig	MW-10136	6/24/2015	Still in use	Monitoring Well/Gauging	841.40	841.18	87.15	10	6	81.00	760.4	69.78	80.78	70.0	81.0	771.4	760.4	11.00
MW-03	CME 550 HSA	MW-10136	6/23/2015	Still in use	Monitoring Well/Gauging	838.38	838.36	22.19	8	2	20.00	818.4	4.98	19.98	5.0	20.0	833.4	818.4	15.00
MW-04	CME 550 HSA	MW-10136	6/23/2015	Still in use	Monitoring Well/Gauging	844.51	844.42	22.13	8	2	20.00	824.5	4.91	19.91	5.0	20.0	839.5	824.5	15.00
MW-05	CME 550 HSA	MW-10136	6/24/2015	Still in use	Monitoring Well/Gauging	851.15	851.11	21.78	8	2	20.00	831.1	4.96	19.96	5.0	20.0	846.1	831.1	15.00
MW-06	CME 550 HSA	MW-10136	6/24/2015	Still in use	Monitoring Well/Gauging	852.98	852.92	21.84	8	2	19.60	833.4	4.54	19.54	5.0	19.6	848.0	833.4	15.00
MW-07	CME 550 HSA	MW-10136	6/25/2015	Still in use	Monitoring Well/Gauging	853.02	853.02	15.35	8	2	13.50	839.5	-1.50	13.50	3.5	13.5	849.5	839.5	15.00
MW-08	CME 550 HSA	MW-10136	6/25/2015	Still in use	Monitoring Well/Gauging	844.75	844.72	21.81	8	2	19.70	825.1	4.67	19.67	4.7	19.7	840.1	825.1	15.00
MW-09	CME 550 HSA	MW-10136	6/25/2015	Still in use	Monitoring Well/Gauging	843.72	843.63	22.63	8	2	19.50	824.2	4.41	19.41	4.5	19.5	839.2	824.2	15.00
MW-10	CME 550 HSA	MW-10136	6/25/2015	Still in use	Monitoring Well/Gauging	842.33	845.41	22.41	8	2	20.00	822.3	8.08	23.08	5.0	20.0	837.3	822.3	15.00
MW-11	CME 550 HSA	MW-10136	7/1/2015	Still in use	Monitoring Well/Gauging	852.36	855.63	31.32	8	2	25.20	827.2	13.27	28.27	14.2	25.0	838.2	827.4	15.00
MW-12	CME 550 HSA	MW-10136	6/25/2015	Still in use	Monitoring Well/Gauging	832.20	834.53	22.05	8	2	19.30	812.9	6.63	21.63	4.3	19.3	827.9	812.9	15.00
MW-12B	Geoprobe 3230 DT HSA	MW-10460	12/22/2015	Still in use	Monitoring Well/Gauging	832.26	834.98	45.31	10	6	43.00	789.3	35.72	45.72	33.0	43.0	799.3	789.3	10.00
MW-13	CME 550 HSA	MW-10136	6/26/2015	Still in use	Monitoring Well/Gauging	845.93	848.84	21.15	8	2	19.00	826.9	6.92	21.92	4.0	19.0	841.9	826.9	15.00
MW-13B	Geoprobe 3230 DT HSA	MW-10461	12/21/2015	Still in use	Monitoring Well/Gauging	847.19	849.82	55.41	10	6	58.00	789.2	50.64	60.64	48.0	58.0	799.2	789.2	10.00
MW-14	CME 550 HSA	MW-10136	6/26/2015	Still in use	Monitoring Well/Gauging	836.47	838.70	22.18	8	2	19.30	817.2	6.53	21.53	4.3	19.3	832.2	817.2	15.00
MW-14B	Mobile ST Schramm	MW-10578	5/3/2016	Still in use	Monitoring Well/Gauging	837.12	840.20	80.20	10	6	76.90	760.2	69.30	79.30	66.0	76.0	771.1	761.1	10.00
MW-15	CME 550 HSA	MW-10136	6/29/2015	Still in use	Monitoring Well/Gauging	828.68	831.03	18.85	8	2	19.00	809.7	6.35	21.35	4.0	19.0	824.7	809.7	15.00
MW-15B	CME 550 HSA	MW-10136	7/28/2015	Still in use	Monitoring Well/Gauging	828.66	831.29	17.85	10	6	77.85	750.8	70.48	80.48	67.9	77.9	760.8	750.8	10.00
MW-16	CME 750 HSA	MW-10136	6/26/2015	Still in use	Monitoring Well/Gauging	847.63	847.67	25.30	8	2	20.00	827.6	5.03	20.03	5.0	20.0	842.6	827.6	15.00
MW-17	CME 750 HSA	MW-10136	6/29/2015	Still in use	Monitoring Well/Gauging	855.32	855.35	15.30	8	2	11.00	844.3	6.03	11.03	6.0	11.0	849.3	844.3	5.00
MW-17B	Geoprobe 3230 DT HSA	MW-10462	1/7/2016	Still in use	Monitoring Well/Gauging	855.37	855.37	27.40	10	6	27.00	824.4	17.00	27.00	17.0	27.0	838.4	828.4	10.00
MW-18	CME 550 HSA	MW-10136	6/29/2015	Still in use	Monitoring Well/Gauging	846.82	846.89	21.85	8	2	20.00	826.8	5.06	20.06	5.0	20.0	841.8	826.8	15.00
MW-19	CME 750 HSA	MW-10136	6/29/2015	Still in use	Monitoring Well/Gauging	851.23	853.94	12.13	8	2	9.50	841.7	7.20	12.20	4.5	9.5	846.7	841.7	5.00
MW-20	CME 750 HSA	MW-10136	6/30/2015	Still in use	Monitoring Well/Gauging	853.07	852.89	22.25	8	2	19.00	834.1	3.81	18.81	4.0	19.0	849.1	834.1	15.00
MW-21	CME 750 HSA	MW-10136	6/30/2015	Still in use	Monitoring Well/Gauging	855.68	855.77	23.23	8	2	20.00	835.7	5.09	20.09	5.0	20.0	850.7	835.7	15.00
MW-22	CME 750 HSA	MW-10136	7/1/2015	Still in use	Monitoring Well/Gauging	854.62	854.60	13.41	8	2	11.00	843.6	5.98	10.98	6.0	11.0	848.6	843.6	5.00
MW-23	CME 750 HSA	MW-10136	7/1/2015	Still in use	Monitoring Well/Gauging	846.66	849.57	23.24	8	2	20.00	826.7	7.91	22.91	5.0	20.0	841.7	826.7	15.00
MW-23B	CME 550 HSA	MW-10136	7/22/2015	Still in use	Monitoring Well/Gauging	846.81	849.69	55.75	10	6	50.50	796.3	30.88	53.38	28.0	50.5	818.8	796.3	22.50
MW-24	CME 550 HSA	MW-10136	7/15/2015	Still in use	Monitoring Well/Gauging	815.72	817.92	12.50	8	2	13.00	802.7	10.20	15.20	8.0	13.0	807.7	802.7	5.00
MW-24B	CME 550 HSA	MW-10136	7/20/2015	Still in use	Monitoring Well/Gauging	815.83	818.72	41.35	10	6	39.50	776.3	22.39	42.39	19.5	39.5	796.3	776.3	20.00
MW-25	Geoprobe 3230 DT HSA	MW-10463	1/5/2016	Still in use	Monitoring Well/Gauging	823.46	826.18	18.04	8	2	15.00	808.5	8.04	18.04	5.0	15.0	818.5	808.5	10.00
MW-25B	Geoprobe 3230 DT HSA	MW-10464	1/5/2016	Still in use	Monitoring Well/Gauging	822.59	823.81	56.43	10	6	58.00	764.6	49.22	59.22	48.0	58.0	774.6	764.6	10.00
MW-26	Geoprobe 3230 DT HSA	MW-10465	1/4/2016	Still in use	Monitoring Well/Gauging	844.76	847.56	17.27	8	2	15.25	829.5	7.27	17.27	5.0	15.0	839.8	829.8	10.00
MW-26B	Geoprobe 3230 DT HSA	MW-10466	1/4/2016	Still in use	Monitoring Well/Gauging	844.81	847.81	42.81	10	6	38.00	806.8	29.00	41.00	26.0	38.0	818.8	806.8	12.00
MW-27	Geoprobe 3230 DT HSA	MW-10467	1/5/2016	Still in use	Monitoring Well/Gauging	854.22	854.11	30.11	8	2	30.25	824.0	15.11	30.11	15.0	30.0	839.2	824.2	15.00
MW-27B	CME 550 HSA / Schramm	MW-10578	4/26/2016	Still in use	Monitoring Well/Gauging	854.27	857.14	50.25	10	6	46.00	808.3	40.25	50.25	36.0	46.0	818.3	808.3	10.00
MW-28	Geoprobe 3230 DT HSA	MW-10468	1/5/2016	Still in use	Monitoring Well/Gauging	841.49	844.31	25.21	8	2	23.50	818.0	8.50	23.50	10.0	25.0	831.5	816.5	15.00
MW-29	Geoprobe 3230 DT HSA	MW-10469	1/4/2016	Still in use	Monitoring Well/Gauging	852.07	852.20	15.02	8	2	15.25	836.8	5.00	15.00	5.0	15.0	847.1	837.1	10.00
MW-30	Geoprobe 3230 DT HSA	MW-10470	1/6/2016	Still in use	Monitoring Well/Gauging	841.21	841.28	14.56	8	2	15.25	826.0	5.00	15.00	5.0	15.0	836.2	826.2	10.00
MW-31	CME 550 HSA	MW-10578	4/19/2016	Still in use	Monitoring Well/Gauging	842.26	845.04	28.05	8	2	25.00	817.3	13.05	28.05	10.0	25.0	832.3	817.3	15.00
MW-31B	CME 550 HSA / Schramm	MW-10578	4/22/2016	Still in use	Monitoring Well/Gauging	842.01	844.94	80.76	10	6	76.00	766.0	69.76	80.76	65.0	76.0	777.0	766.0	11.00
MW-32	CME 550 HSA	MW-10578	4/19/2016	Still in use	Monitoring Well/Gauging	839.81	842.93	28.96	8	2	26.00	813.8	12.96	27.96	10.0	25.0	829.8	814.8	15.00
MW-33	CME 550 HSA	MW-10578	4/15/2016	Still in use	Monitoring Well/Gauging	846.20	849.20	28.25	8	2	27.00	819.2	11.25	26.25	10.0	25.0	836.2	821.2	15.00
MW-33T	CME 550 HSA/Air Rotary	MW-10578	4/14/2016	Still in use	Monitoring Well/Gauging	846.15	849.11	98.15	8	2	96.50	749.7	85.65	95.65	84.0	94.0	762.2	752.2	10.00
MW-35	CME 550 HSA	MW-10578	4/20/2016	Still in use	Monitoring Well/Gauging	826.22	829.40	28.50	8	2	26.00	800.2	12.50	27.50	10.0	25.0	816.2	801.2	15.00

Table 1. Well Construction Information

Plantation Pipe Line Company

Lewis Drive Release, Belton, South Carolina

Site ID #18693 "Kinder Morgan Belton Pipeline Release"

Location ID	Installation Method	Permit #	Date Installed	Date Abandoned	Purpose	Ground Surface Elevation (ft amsl)	TOC Elevation (ft amsl)	Measured Depth to Bottom (ft BTOC)	Bore Hole Diameter (in)	Well Dia (in)	Well Depth (ft bgs)	Bottom of Well (ft amsl)	Top of Screen or Open Borehole Interval (ft BTOC)	Bottom of Screen or Open Borehole Interval (ft BTOC)	Top of Screen or Open Borehole Interval (ft bgs)	Bottom of Screen or Open Borehole Interval (ft bgs)	Top of Screen or Open Borehole Interval (ft amsl)	Bottom of Screen or Open Borehole Interval (ft amsl)	Length of Screen or Open Borehole Interval (ft)
MW-36	CME 550 HSA	MW-10578	4/22/2016	Still in use	Monitoring Well/Gauging	858.66	858.47	23.62	8	2	24.50	834.2	8.62	23.62	9.5	24.5	849.2	834.2	15.00
MW-36B	CME 550 HSA / Schramm	MW-10578	4/28/2016	Still in use	Monitoring Well/Gauging	858.49	858.15	47.89	10	6	54.90	803.6	36.99	46.99	44.0	54.0	814.5	804.5	10.00
MW-37	Geoprobe 8040 HSA	MW-10759	8/9/2016	Still in use	Monitoring Well/Gauging	NS	NS	18.11	8.25	2	16.00	NS	7.11	17.11	5.0	15.0	NS	NS	10.00
MW-38	Geoprobe 8040 HSA	MW-10759	8/9/2016	Still in use	Monitoring Well/Gauging	NS	NS	11.44	8.25	2	9.10	NS	6.24	11.24	3.9	8.9	NS	NS	5.00
Recovery Wells																			
RW-01	HSA	MW-09978	1/28/2015	Still in use	Gauging/LNAPL Recovery	849.49	851.92	19.75	6.25	4	17	832.5	4.44	19.44	2.0	17.0	847.5	832.5	15
RW-02	HSA	MW-09978	1/29/2015	Still in use	Gauging/LNAPL Recovery	850.22	852.69	25.25	6.25	4	23	827.2	15.47	25.47	13.0	23.0	837.2	827.2	10
RW-03	HSA	MW-09978	1/29/2015	Still in use	Gauging/LNAPL Recovery	850.03	852.34	33.39	6.25	4	31.2	818.8	18.51	33.51	16.2	31.2	833.8	818.8	15
RW-04	HSA	MW-09978	1/29/2015	Still in use	Gauging/LNAPL Recovery	852.15	853.93	35.04	6.25	4	33	819.2	14.78	34.78	13.0	33.0	839.2	819.2	20
RW-05	HSA	MW-09978	1/30/2015	Still in use	Gauging/LNAPL Recovery	850.99	853.53	34.50	6.25	4	34.5	816.5	22.04	37.04	19.5	34.5	831.5	816.5	15
RW-06	HSA	MW-09978	1/30/2015	Still in use	Gauging/LNAPL Recovery	844.21	846.21	38.50	6.25	4	38.5	805.7	20.49	40.49	18.5	38.5	825.7	805.7	20
RW-07	HSA	MW-09978	2/2/2015	Still in use	Gauging/LNAPL Recovery	841.01	843.19	38.00	6.25	4	38	803.0	15.18	40.18	13.0	38.0	828.0	803.0	25
RW-08	HSA	MW-09978	2/2/2015	Still in use	Gauging/LNAPL Recovery	833.46	835.48	33.50	6.25	4	33.5	800.0	10.52	35.52	8.5	33.5	825.0	800.0	25
RW-09	HSA	MW-09978	2/3/2015	Still in use	Gauging/LNAPL Recovery	831.13	835.12	42.13	6.25	4	41.5	789.6	15.49	45.49	11.5	41.5	819.6	789.6	30
RW-10	HSA	MW-10006	2/4/2015	Still in use	Gauging/LNAPL Recovery	846.76	848.53	66.51	6.25	4	68.5	778.3	5.27	70.27	3.5	68.5	843.3	778.3	65
RW-11	HSA	MW-10006	2/4/2015	Still in use	Gauging/LNAPL Recovery	851.03	852.97	17.92	6.25	4	19.5	831.5	6.44	21.44	4.5	19.5	846.5	831.5	15
RW-12	HSA	MW-10006	2/5/2015	Still in use	Gauging/LNAPL Recovery	851.48	852.75	14.00	6.25	4	14	837.5	6.00	14.00	4.0	14.0	847.5	837.5	10
RW-13	HSA	MW-10006	2/5/2015	Still in use	Gauging/LNAPL Recovery	847.57	847.97	45.53	6.25	4	50	797.6	0.53	45.53	5.0	50.0	842.6	797.6	45
RW-14	HSA	MW-10006	2/6/2015	Still in use	Gauging/LNAPL Recovery	826.25	827.54	55.00	6.25	4	55	771.2	5.00	55.00	5.0	55.0	821.2	771.2	50
RW-15	HSA	MW-10006	2/10/2015	Still in use	Gauging/LNAPL Recovery	849.48	851.64	36.50	6.25	4	36.5	813.0	1.50	36.50	1.5	36.5	848.0	813.0	35
Recovery Sumps																			
RS-01	Trackhoe	MW-09978	12/29/2014	Still in use	Gauging/LNAPL Recovery	847.95	850.33	23.60	NA	4	21.21	826.7	4.39	23.60	2.0	21.2	845.9	826.7	19.21
RS-02	Trackhoe	MW-09978	12/29/2014	Still in use	Gauging/LNAPL Recovery	848.54	850.10	20.21	NA	4	18.65	829.9	3.56	20.21	2.0	18.6	846.5	829.9	16.65
RS-04	Trackhoe	MW-09978	12/30/2014	Still in use	Gauging/LNAPL Recovery	850.36	851.44	10.25	NA	4	9.17	841.2	3.08	10.25	2.0	9.2	848.4	841.2	7.17
RS-05	Trackhoe	MW-09978	12/31/2014	Still in use	Gauging/LNAPL Recovery	847.14	848.55	25.20	NA	4	23.79	823.3	3.41	25.20	2.0	23.8	845.1	823.3	21.79
RS-06	Trackhoe	MW-09978	12/31/2014	Still in use	Gauging/LNAPL Recovery	848.25	850.73	25.18	NA	4	22.70	825.5	4.48	25.18	2.0	22.7	846.2	825.5	20.70
RS-07	Trackhoe	MW-09978	12/31/2014	Still in use	Gauging/LNAPL Recovery	854.06	856.04	16.78	NA	4	14.80	839.3	3.98	16.78	2.0	14.8	852.1	839.3	12.80
RS-08	Trackhoe	MW-09978	12/31/2014	Still in use	Gauging/LNAPL Recovery	852.59	854.91	20.22	NA	4	17.91	834.7	4.31	20.22	2.0	17.9	850.6	834.7	15.91
RS-09	Trackhoe	MW-09978	1/7/2015	Still in use	Gauging/LNAPL Recovery	846.75	849.12	18.69	NA	4	16.33	830.4	4.37	18.69	2.0	16.3	844.8	830.4	14.33
RS-10	Trackhoe	MW-09978	1/7/2015	Still in use	Gauging/LNAPL Recovery	846.28	847.52	20.06	NA	4	18.82	827.5	3.24	20.06	2.0	18.8	844.3	827.5	16.82
RS-11	Trackhoe	MW-09978	1/7/2015	Still in use	Gauging/LNAPL Recovery	846.35	848.41	22.06	NA	4	19.99	826.4	4.07	22.06	2.0	20.0	844.3	826.4	17.99
RS-12	Trackhoe	MW-09978	1/7/2015	Still in use	Gauging/LNAPL Recovery	846.58	848.87	21.29	NA	4	19.00	827.6	4.29	21.29	2.0	19.0	844.6	827.6	17.00
RS-13	Trackhoe	MW-09978	1/8/2015	Still in use	Gauging/LNAPL Recovery	845.51	848.28	19.92	NA	4	17.14	828.4	4.15	19.92	1.4	17.1	844.1	828.4	15.77
RS-14	Trackhoe	MW-09978	1/8/2015	Still in use	Gauging/LNAPL Recovery	844.66	846.92	19.93	NA	4	17.68	827.0	4.26	19.93	2.0	17.7	842.7	827.0	15.68
RS-15	Trackhoe	MW-09978	1/8/2015	Still in use	Gauging/LNAPL Recovery	845.36	848.97	19.93	NA	4	16.31	829.0	5.62	19.93	2.0	16.3	843.4	829.0	14.31
RS-16	Trackhoe	MW-09978	1/8/2015	Still in use	Gauging/LNAPL Recovery	844.56	846.77	19.98	NA	4	17.77	826.8	4.21	19.98	2.0	17.8	842.6	826.8	15.77
RS-17	Trackhoe	MW-09978	1/8/2015	Still in use	Gauging/LNAPL Recovery	843.29	845.15	19.91	NA	4	18.05	825.2	3.86	19.91	2.0	18.0	841.3	825.2	16.05
RS-18	Trackhoe	MW-09978	1/8/2015	Still in use	Gauging/LNAPL Recovery	846.82	848.59	19.98	NA	4	18.21	828.6	3.77	19.98	2.0	18.2	844.8	828.6	16.21
RS-19	Trackhoe	MW-09978	1/21/2015	Still in use	Gauging/LNAPL Recovery	849.27	852.37	15.10	NA	4	12.00	837.3	5.10	15.10	2.0	12.0	847.3	837.3	10.00
RS-20	Trackhoe	MW-09978	3/19/2015	Still in use	Gauging/LNAPL Recovery	841.73	843.49	11.84	NA	4	9.91	831.8	3.93	11.84	2.0	9.9	839.7	831.8	7.91
Recovery Trench Sumps																			
RT-1A	Trackhoe	MW-09978	1/6/2015	Still in use	Gauging/LNAPL Recovery	852.86	856.21	20.80	NA	4	20.00	832.9	5.35	23.35	2.0	20.0	850.9	832.9	18
RT-1B	Trackhoe	MW-09978	1/6/2015	Still in use	Gauging/LNAPL Recovery	853.29	857.30	20.69	NA	4	20.00	833.3	6.00	24.00	2.0	20.0	851.3	833.3	18
RT-1C	Trackhoe	MW-09978	1/6/2015	Still in use	Gauging/LNAPL Recovery	853.55	857.02	20.20	NA	4	20.00	833.5	5.47	23.47	2.0	20.0	851.5	833.5	18
RT-2A	Trackhoe	MW-09978	1/22/2015	Still in use	Gauging/LNAPL Recovery	815.66	818.31	10.81	NA	4	10.00	805.7	4.66	12.66	2.0	10.0	813.7	805.7	8
RT-2B	Trackhoe	MW-09978	1/22/2015	Still in use	Gauging/LNAPL Recovery	816.72	818.92	10.82	NA	4	10.00	806.7	4.20	12.20	2.0	10.0	814.7	806.7	8
RT-2C	Trackhoe	MW-09978	1/22/2015	Still in use	Gauging/LNAPL Recovery	816.86	819.02	10.23	NA	4	10.00	806.9	4.15	12.15	2.0	10.0	814.9	806.9	8
RT-2D	Trackhoe	MW-09978	1/22/2015	Still in use	Gauging/LNAPL Recovery	817.11	819.57	10.21	NA	4	10.00	807.1	4.46	12.46	2.0	10.0	815.1	807.1	8
RT-2E	Trackhoe	MW-09978	1/22/2015	Still in use	Gauging/LNAPL Recovery	817.32	819.40	10.24	NA	4	10.00	807.3	4.08	12.08	2.0	10.0	815.3	807.3	8

Table 1. Well Construction Information

Plantation Pipe Line Company

Lewis Drive Release, Belton, South Carolina

Site ID #18693 "Kinder Morgan Belton Pipeline Release"

Location ID	Installation Method	Permit #	Date Installed	Date Abandoned	Purpose	Ground Surface Elevation (ft amsl)	TOC Elevation (ft amsl)	Measured Depth to Bottom (ft BTOC)	Bore Hole Diameter (in)	Well Dia (in)	Well Depth (ft bgs)	Bottom of Well (ft amsl)	Top of Screen or Open Borehole Interval (ft BTOC)	Bottom of Screen or Open Borehole Interval (ft BTOC)	Top of Screen or Open Borehole Interval (ft bgs)	Bottom of Screen or Open Borehole Interval (ft bgs)	Top of Screen or Open Borehole Interval (ft amsl)	Bottom of Screen or Open Borehole Interval (ft amsl)	Length of Screen or Open Borehole Interval (ft)
RT-2F	Trackhoe	MW-09978	1/22/2015	Still in use	Gauging/LNAPL Recovery	817.74	819.52	10.23	NA	4	10.00	807.7	3.78	11.78	2.0	10.0	815.7	807.7	8
RT-2G	Trackhoe	MW-09978	1/22/2015	Still in use	Gauging/LNAPL Recovery	819.27	820.31	10.24	NA	4	10.00	809.3	3.04	11.04	2.0	10.0	817.3	809.3	8
RT-2H	Trackhoe	MW-09978	1/22/2015	Still in use	Gauging/LNAPL Recovery	819.91	822.17	8.35	NA	4	10.00	809.9	3.90	12.25	1.7	10.0	818.3	809.9	8
RT-2I	Trackhoe	MW-09978	1/22/2015	Still in use	Gauging/LNAPL Recovery	819.23	819.51	10.20	NA	4	10.00	809.2	2.28	10.28	2.0	10.0	817.2	809.2	8
RT-2J	Trackhoe	MW-09978	1/22/2015	Still in use	Gauging/LNAPL Recovery	817.47	818.38	10.22	NA	4	10.00	807.5	2.91	10.91	2.0	10.0	815.5	807.5	8
RT-2K	Trackhoe	MW-09978	3/20/2015	Still in use	Gauging/LNAPL Recovery	816.11	817.46	4.14	NA	4	2.50	813.6	2.64	4.14	1.0	2.5	815.1	813.6	2
RT-2L	Trackhoe	MW-09978	3/20/2015	Still in use	Gauging/LNAPL Recovery	817.95	820.38	6.60	NA	4	3.71	814.2	3.89	6.60	1.0	3.7	816.9	814.2	3
Piezometers																			
TW-04R	DPT	MW-10006	2/4/2015	Still in use	Gauging	852.68	852.64	5.46	2.2	1	5.5	847.2	2.46	5.46	2.5	5.5	850.2	847.2	3
TW-05R	DPT	MW-10006	2/4/2015	Still in use	Gauging	849.96	849.93	8.87	2.2	1	8.8	841.2	2.87	8.87	2.8	8.9	847.2	841.1	6
TW-14R	DPT	MW-10006	2/4/2015	Still in use	Gauging	853.47	853.37	6.20	2.2	1	6.5	847.0	2.20	6.20	2.5	6.3	851.0	847.2	4
TW-15R	DPT	MW-10006	2/4/2015	Still in use	Gauging	850.70	850.62	4.85	2.2	1	5	845.7	1.85	4.85	2.0	4.9	848.7	845.8	3
TW-21	DPT	MW-09978	1/22/2015	Still in use	Gauging	849.72	849.70	12.71	2.2	1	14	835.7	2.71	12.71	4.0	12.7	845.7	837.0	10
TW-28	DPT	MW-09978	1/23/2015	Still in use	Gauging	851.57	851.42	31.84	2.2	1	30	821.6	11.84	31.84	10.0	32.0	841.6	819.6	20
TW-30	DPT	MW-09978	1/23/2015	Still in use	Gauging	851.86	851.81	25.05	2.2	1	24	827.9	10.05	25.05	9.0	25.1	842.9	826.8	15
TW-34	DPT	MW-09978	1/24/2015	Still in use	Gauging	854.92	854.79	25.04	2.2	1	23	831.9	10.04	25.04	8.0	25.2	846.9	829.7	15
TW-35	DPT	MW-09978	1/24/2015	Still in use	Gauging	854.22	854.10	25.12	2.2	1	23	831.2	10.12	25.12	8.0	25.2	846.2	829.0	15
TW-40	DPT	MW-09978	1/24/2015	Still in use	Gauging	853.45	853.35	34.05	2.2	1	33	820.5	14.05	34.05	13.0	34.2	840.5	819.3	20
TW-41	DPT	MW-09978	1/25/2015	Still in use	Gauging	849.38	849.38	33.58	2.2	1	34	815.4	8.58	33.58	9.0	33.6	840.4	815.8	25
TW-42	DPT	MW-09978	1/25/2015	Still in use	Gauging	847.02	846.84	39.80	2.2	1	29.5	817.5	19.80	39.80	9.5	40.0	837.5	807.0	20
TW-45	DPT	MW-09978	1/25/2015	Still in use	Gauging	848.26	848.31	36.86	2.2	1	37.5	810.8	11.86	36.86	12.5	36.8	835.8	811.4	25
TW-46	DPT	MW-09978	1/26/2015	Still in use	Gauging	846.89	846.88	33.44	2.2	1	32	814.9	13.44	33.44	12.0	33.4	834.9	813.4	20
TW-55	DPT	MW-10006	2/5/2015	Still in use	Gauging	846.00	845.93	43.00	2.7	1	43	803.0	13.00	43.00	13.0	43.1	833.0	802.9	30
TW-59	DPT	MW-09978	1/30/2015	Still in use	Gauging	834.84	834.78	22.00	2.7	1	22	812.8	7.00	22.00	7.0	22.1	827.8	812.8	15
TW-60	DPT	MW-09978	1/30/2015	Still in use	Gauging	828.00	828.03	40.40	2.7	1	41.5	786.5	5.40	40.40	6.5	40.4	821.5	787.6	35
TW-64	DPT	MW-09978	2/2/2015	Still in use	Gauging	845.89	845.88	56.43	2.2	1	55	790.9	6.43	56.43	5.0	56.4	840.9	789.5	50
TW-65	DPT	MW-09978	2/2/2015	Still in use	Gauging	845.66	845.62	44.81	2.2	1	44.5	801.2	9.81	44.81	9.5	44.8	836.2	800.8	35
TW-66	DPT	MW-09978	2/2/2015	Still in use	Gauging	820.18	820.31	29.70	2.7	1	24	796.2	9.70	29.70	4.0	29.6	816.2	790.6	20
TW-67	DPT	MW-09978	2/3/2015	Still in use	Gauging	852.88	852.71	26.31	2.7	1	27	825.9	6.31	26.31	7.0	26.5	845.9	826.4	20
TW-68	DPT	MW-09978	2/3/2015	Still in use	Gauging	846.59	846.45	29.96	2.2	1	27	819.6	9.96	29.96	7.0	30.1	839.6	816.5	20
TW-69	DPT	MW-09978	2/3/2015	Still in use	Gauging	840.38	840.27	51.91	2.2	1	50	790.4	11.91	51.91	10.0	52.0	830.4	788.4	40
TW-70	DPT	MW-09978	2/3/2015	Still in use	Gauging	842.07	841.95	45.05	2.2	1	43	799.1	10.05	45.05	8.0	45.2	834.1	796.9	35
TW-73	DPT	MW-09978	2/3/2015	Still in use	Gauging	850.60	850.53	16.00	2.7	1	16	834.6	6.00	16.00	6.0	16.1	844.6	834.5	10
TW-76	DPT	MW-10006	2/4/2015	Still in use	Gauging	852.53	852.44	43.62	2.7	1	43	809.5	8.62	43.62	8.0	43.7	844.5	808.8	35
TW-81	DPT	MW-10006	2/5/2015	Still in use	Gauging	849.48	849.43	7.00	2.2	1	7	842.5	2.00	7.00	2.0	7.0	847.5	842.4	5
TW-82	DPT	MW-10006	2/5/2015	Still in use	Gauging	849.83	849.64	10.00	2.2	1	10	839.8	2.00	10.00	2.0	10.2	847.8	839.6	8
TW-83	DPT	MW-10006	2/5/2015	Still in use	Gauging	850.54	850.44	17.00	2.2	1	17	833.5	2.00	17.00	2.0	17.1	848.5	833.4	15
TW-84	DPT	MW-10006	2/5/2015	Still in use	Gauging	851.38	851.22	13.50	2.2	1	13.5	837.9	3.50	13.50	3.5	13.7	847.9	837.7	10
TW-85	DPT	MW-10006	2/5/2015	Still in use	Gauging	843.64	843.49	39.00	2.7	1	39	804.6	9.00	39.00	9.0	39.2	834.6	804.5	30
TW-86	DPT	MW-10006	2/5/2015	Still in use	Gauging	853.28	853.10	6.00	2.2	1	6	847.3	2.00	6.00	2.0	6.2	851.3	847.1	4
TW-87	DPT	MW-10006	2/5/2015	Still in use	Gauging	852.33	852.25	7.00	2.2	1	7	845.3	2.00	7.00	2.0	7.1	850.3	845.3	5
TW-90	DPT	MW-10006	2/6/2015	Still in use	Gauging	845.48	845.43	46.50	2.7	1	46.5	799.0	6.50	46.50	6.5	46.6	839.0	798.5	50
TW-94	DPT	MW-10006	2/10/2015	Still in use	Gauging	840.75	840.58	40.00	2.7	1	40	800.8	5.00	40.00	5.0	40.2	835.8	800.6	35
TW-96	DPT	MW-10006	2/11/2015	Still in use	Gauging	840.52	840.40	30.00	2.7	1	30	810.5	5.00	30.00	5.0	30.1	835.5	810.4	25
Vertical Air Sparge Wells																			
VAS-01	Mobile B57 HSA	SCHE03020469	7/28/2016	Still in use	Cupboard Creek Protection	NS	NS	NA	8.50	2.00	32.20	NA	NA	NA	28.70	31.20	NA	NA	2.50
VAS-02	Mobile B57 HSA	SCHE03020469	7/27/2016	Still in use	Cupboard Creek Protection	NS	NS	NA	8.50	2.00	27.00	NA	NA	NA	23.50	26.00	NA	NA	2.50
VAS-03	Mobile B57 HSA	SCHE03020469	7/27/2016	Still in use	Cupboard Creek Protection	NS	NS	NA	8.50	2.00	18.30	NA	NA	NA	14.80	17.30	NA	NA	2.50

Table 1. Well Construction Information

Plantation Pipe Line Company

Lewis Drive Release, Belton, South Carolina

Site ID #18693 "Kinder Morgan Belton Pipeline Release"

Location ID	Installation Method	Permit #	Date Installed	Date Abandoned	Purpose	Ground Surface Elevation (ft amsl)	TOC Elevation (ft amsl)	Measured Depth to Bottom (ft BTOC)	Bore Hole Diameter (in)	Well Dia (in)	Well Depth (ft bgs)	Bottom of Well (ft amsl)	Top of Screen or Open Borehole Interval (ft BTOC)	Bottom of Screen or Open Borehole Interval (ft BTOC)	Top of Screen or Open Borehole Interval (ft bgs)	Bottom of Screen or Open Borehole Interval (ft bgs)	Top of Screen or Open Borehole Interval (ft amsl)	Bottom of Screen or Open Borehole Interval (ft amsl)	Length of Screen or Open Borehole Interval (ft)
VAS-04	Geoprobe 8040 HSA	SCHE03020469	8/4/2016	Still in use	Cupboard Creek Protection	NS	NS	NA	8.50	2.00	16.70	NA	NA	NA	13.20	15.70	NA	NA	2.50
VAS-05	Mobile B57 HSA	SCHE03020469	7/27/2016	Still in use	Cupboard Creek Protection	NS	NS	NA	8.50	2.00	13.00	NA	NA	NA	9.50	12.00	NA	NA	2.50
VAS-06	Mobile B57 HSA	SCHE03020469	7/26/2016	Still in use	Cupboard Creek Protection	NS	NS	NA	8.50	2.00	14.40	NA	NA	NA	10.90	13.40	NA	NA	2.50
VAS-07	Mobile B57 HSA	SCHE03020469	7/26/2016	Still in use	Cupboard Creek Protection	NS	NS	NA	8.50	2.00	19.40	NA	NA	NA	15.90	18.40	NA	NA	2.50
VAS-08	Mobile B57 HSA	SCHE03020469	7/25/2016	Still in use	Cupboard Creek Protection	NS	NS	NA	8.50	2.00	22.00	NA	NA	NA	18.50	21.00	NA	NA	2.50
VAS-09	Mobile B57 HSA	SCHE03020469	7/25/2016	Still in use	Cupboard Creek Protection	NS	NS	NA	8.50	2.00	14.00	NA	NA	NA	10.50	13.00	NA	NA	2.50
VAS-10	Mobile B57 HSA	SCHE03020469	7/25/2016	Still in use	Cupboard Creek Protection	NS	NS	NA	8.50	2.00	16.10	NA	NA	NA	12.60	15.10	NA	NA	2.50
VAS-11	Mobile B57 HSA	SCHE03020469	7/28/2016	Still in use	Cupboard Creek Protection	NS	NS	NA	8.50	2.00	25.30	NA	NA	NA	21.80	24.30	NA	NA	2.50
VAS-12	Geoprobe 8040 HSA	SCHE03020469	8/5/2016	Still in use	Cupboard Creek Protection	NS	NS	NA	8.50	2.00	24.20	NA	NA	NA	20.70	23.20	NA	NA	2.50
VAS-13	Geoprobe 8040 HSA	SCHE03020469	8/5/2016	Still in use	Cupboard Creek Protection	NS	NS	NA	8.50	2.00	19.60	NA	NA	NA	16.10	18.60	NA	NA	2.50
VAS-14	Geoprobe 8040 HSA	SCHE03020469	8/4/2016	Still in use	Cupboard Creek Protection	NS	NS	NA	8.50	2.00	16.20	NA	NA	NA	12.70	15.20	NA	NA	2.50
VAS-15	Geoprobe 8040 HSA	SCHE03020469	8/4/2016	Still in use	Cupboard Creek Protection	NS	NS	NA	8.50	2.00	15.50	NA	NA	NA	12.00	14.50	NA	NA	2.50
VAS-16	Geoprobe 8040 HSA	SCHE03020469	8/3/2016	Still in use	Cupboard Creek Protection	NS	NS	NA	8.50	2.00	17.90	NA	NA	NA	14.40	16.90	NA	NA	2.50
VAS-17	Geoprobe 8040 HSA	SCHE03020469	8/3/2016	Still in use	Cupboard Creek Protection	NS	NS	NA	8.50	2.00	19.30	NA	NA	NA	15.80	18.30	NA	NA	2.50
VAS-18	Geoprobe 8040 HSA	SCHE03020469	8/8/2016	Still in use	Cupboard Creek Protection	NS	NS	NA	8.50	2.00	16.50	NA	NA	NA	13.00	15.50	NA	NA	2.50
VAS-19	Mobile B57 HSA	SCHE03020469	7/26/2016	Still in use	Cupboard Creek Protection	NS	NS	NA	8.50	2.00	17.20	NA	NA	NA	13.60	16.10	NA	NA	2.50
VAS-20	Mobile B57 HSA	SCHE03020469	7/19/2016	Still in use	Brown's Creek Protection	NS	NS	NA	8.50	2.00	47.60	NA	NA	NA	44.60	47.10	NA	NA	2.50
VAS-21	Mobile B57 HSA	SCHE03020469	7/19/2016	Still in use	Brown's Creek Protection	NS	NS	NA	8.50	2.00	53.50	NA	NA	NA	50.00	52.50	NA	NA	2.50
VAS-22	Mobile B57 HSA	SCHE03020469	7/21/2016	Still in use	Brown's Creek Protection	NS	NS	NA	8.50	2.00	57.00	NA	NA	NA	53.50	56.00	NA	NA	2.50
VAS-23	Mobile B57 HSA	SCHE03020469	7/22/2016	Still in use	Brown's Creek Protection	NS	NS	NA	8.50	2.00	49.50	NA	NA	NA	46.00	48.50	NA	NA	2.50
VAS-24	Mobile B57 HSA	SCHE03020469	7/5/2016	Still in use	Brown's Creek Protection	NS	NS	NA	8.50	2.00	58.50	NA	NA	NA	55.00	57.50	NA	NA	2.50
VAS-25	Mobile B57 HSA	SCHE03020469	7/11/2016	Still in use	Brown's Creek Protection	NS	NS	NA	8.50	2.00	54.00	NA	NA	NA	50.50	53.00	NA	NA	2.50
VAS-26	Mobile B57 HSA	SCHE03020469	7/11/2016	Still in use	Brown's Creek Protection	NS	NS	NA	8.50	2.00	55.00	NA	NA	NA	51.50	54.00	NA	NA	2.50
VAS-27	Mobile B57 HSA	SCHE03020469	7/8/2016	Still in use	Brown's Creek Protection	NS	NS	NA	8.50	2.00	54.00	NA	NA	NA	50.50	53.00	NA	NA	2.50
VAS-28	Mobile B57 HSA	SCHE03020469	7/6/2016	Still in use	Brown's Creek Protection	NS	NS	NA	8.50	2.00	23.10	NA	NA	NA	19.80	22.30	NA	NA	2.50
VAS-29	Mobile B57 HSA	SCHE03020469	7/6/2016	Still in use	Brown's Creek Protection	NS	NS	NA	8.50	2.00	27.50	NA	NA	NA	24.00	26.50	NA	NA	2.50
VAS-30	Mobile B57 HSA	SCHE03020469	6/21/2016	Still in use	Brown's Creek Protection	NS	NS	NA	8.50	2.00	52.90	NA	NA	NA	49.40	51.90	NA	NA	2.50
VAS-31	Mobile B57 HSA	SCHE03020469	6/21/2016	Still in use	Brown's Creek Protection	NS	NS	NA	8.50	2.00	42.00	NA	NA	NA	38.50	41.00	NA	NA	2.50
VAS-32	Mobile B57 HSA	SCHE03020469	6/30/2016	Still in use	Brown's Creek Protection	NS	NS	NA	8.50	2.00	43.00	NA	NA	NA	39.50	42.00	NA	NA	2.50
VAS-33	Mobile B57 HSA	SCHE03020469	6/29/2016	Still in use	Brown's Creek Protection	NS	NS	NA	8.50	2.00	52.60	NA	NA	NA	49.10	51.60	NA	NA	2.50
VAS-34	Mobile B57 HSA	SCHE03020469	7/13/2016	Still in use	Brown's Creek Protection	NS	NS	NA	8.50	2.00	53.50	NA	NA	NA	50.00	52.50	NA	NA	2.50
VAS-35	Mobile B57 HSA	SCHE03020469	7/13/2016	Still in use	Brown's Creek Protection	NS	NS	NA	8.50	2.00	40.00	NA	NA	NA	36.50	39.00	NA	NA	2.50
VAS-36	Mobile B57 HSA	SCHE03020469	7/7/2016	Still in use	Brown's Creek Protection	NS	NS	NA	8.50	2.00	33.20	NA	NA	NA	29.70	32.20	NA	NA	2.50
VAS-37	Mobile B57 HSA	SCHE03020469	7/7/2016	Still in use	Brown's Creek Protection	NS	NS	NA	8.50	2.00	16.50	NA	NA	NA	13.00	15.50	NA	NA	2.50
VAS-38	Mobile B57 HSA	SCHE03020469	7/6/2016	Still in use	Brown's Creek Protection	NS	NS	NA	8.50	2.00	21.10	NA	NA	NA	16.60	19.10	NA	NA	2.50
VAS-39	Mobile B57 HSA	SCHE03020469	6/22/2016	Still in use	Brown's Creek Protection	NS	NS	NA	8.50	2.00	42.40	NA	NA	NA	38.90	41.40	NA	NA	2.50
VAS-40	Mobile B57 HSA	SCHE03020469	6/23/2016	Still in use	Brown's Creek Protection	NS	NS	NA	8.50	2.00	40.00	NA	NA	NA	36.50	39.00	NA	NA	2.50
VAS-41	Mobile B57 HSA	SCHE03020469	6/28/2016	Still in use	Brown's Creek Protection	NS	NS	NA	8.50	2.00	27.80	NA	NA	NA	24.30	26.80	NA	NA	2.50
VAS-42A	Mobile B57 HSA	SCHE03020469	7/14/2016	Still in use	Brown's Creek Protection	NS	NS	NA	8.50	2.00	39.30	NA	NA	NA	35.80	38.30	NA	NA	2.50
VAS-43A	Mobile B57 HSA	SCHE03020469	7/15/2016	Still in use	Brown's Creek Protection	NS	NS	NA	8.50	2.00	66.50	NA	NA	NA	63.00	65.50	NA	NA	2.50
VAS-44A	Mobile B57 HSA	SCHE03020469	7/18/2016	Still in use	Brown's Creek Protection	NS	NS	NA	8.50	2.00	72.50	NA	NA	NA	69.00	71.50	NA	NA	2.50
VAS-46	Mobile B57 HSA	SCHE03020469	6/24/2016	Still in use	Brown's Creek Protection	NS	NS	NA	8.50	2.00	20.80	NA	NA	NA	18.00	20.50	NA	NA	2.50

Notes:

- amsl = above mean sea level relative to North American Vertical Datum of 1988 (NAVD88). Benchmark is 34.8289659 degrees north, 82.3710354 degrees west (NAD83, 2011), elevation 929.1 ft NAVD88
- bgs = below ground surface
- BTOC = below top of casing
- DPT = direct push
- ft = feet
- HSA = hollow-stem auger
- in = inches
- NA = not applicable
- NS = location not surveyed
- RNE = Refusal not encountered
- TOC = top of casing

Table 2. Stream Gauge Construction Information

Plantation Pipe Line Company

Lewis Drive Release, Belton, South Carolina

Site ID #18693 "Kinder Morgan Belton Pipeline Release"

Location ID	Installation Method	Date Installed	Stream Bottom Elevation (ft amsl)	Elevation of Zero Mark (ft amsl)
SW-01	By hand	3/29/2016	812.39	812.82
SW-02	By hand	3/29/2016	808.36	808.65
SW-03	By hand	3/29/2016	815.05	815.09
SW-05	By hand	3/29/2016	838.69	838.75
SW-08	By hand	3/29/2016	802.14	802.04
SW-10	By hand	3/29/2016	776.62	778.09

Notes:

amsl = above mean sea level relative to North American Vertical Datum of 1988 (NAVD88). Benchmark is 34.8289659 degrees north, 82.3710354 degrees west (NAD83, 2011), elevation 929.1 ft NAVD88

ft = feet

Table 3. Analytical Results for Surface Water
 Lewis Drive Release, Belton, South Carolina
 Site ID #18693 "Kinder Morgan Belton Pipeline Release"

Location	Sample ID	Date Collected	Analyte: Units	Benzene	Ethylbenzene	Toluene	m&p-Xylene	o-Xylene	Naphthalene	MTBE
SW-SEEP	SW-RELEASE	1/20/2015	µg/L	330	490	2,400	2,100	940	140	5.7 J
SW-01	SW01-121114	12/11/2014	µg/L	0.5 U	1 U	1 U	2 U	1 U	1 U ¹	1 U
	SW01-022515	2/25/2015	µg/L	5 U ¹	5 U	5 U	10 U	5 U	5 U ¹	NA
	SW01-030215	3/2/2015	µg/L	5 U ¹	5 U	5 U	10 U	5 U	5 U ¹	NA
	SW01-031115	3/11/2015	µg/L	5 U ¹	5 U	5 U	10 U	5 U	5 U ¹	NA
	SW01-031815	3/18/2015	µg/L	5 U ¹	5 U	5 U	10 U	5 U	5 U ¹	NA
	SW01-033115	3/31/2015	µg/L	5 U ¹	5 U	17.6	10 U	5 U	5 U ¹	NA
	SW01-042215	4/22/2015	µg/L	5 U ¹	5 U	14.9	10 U	5 U	5 U ¹	NA
	SW01-050715	5/7/2015	µg/L	5 U ¹	5 U	7.0	10 U	5 U	5 U ¹	NA
	SW01-051915	5/19/2015	µg/L	5 U ¹	5 U	8.8	10.6	6.4	5 U ¹	NA
	SW01-060315	6/3/2015	µg/L	5 U ¹	5 U	5 U	10 U	5 U	5 U ¹	NA
	SW01-061815	6/18/2015	µg/L	5 U ¹	5 U	5 U	10 U	5 U	5 U ¹	NA
	SW01-071515	7/15/2015	µg/L	5 U ¹	5 U	5 U	10 U	5 U	5 U ¹	NA
	SW01-081315	8/13/2015	µg/L	5 U ¹	5 U	5 U	10 U	5 U	5 U ¹	NA
	SW01-092415	9/24/2015	µg/L	5 U ¹	5 U	5 U	10 U	5 U	5 U ¹	NA
	SW01-102215	10/22/2015	µg/L	1 U	1 U	1 U	2 U	1 U	1 U ¹	NA
	SW01-112415	11/24/2015	µg/L	7.8	1.5	13.0	9.3	4.6	1 U ¹	NA
	SW01-122215	12/22/2015	µg/L	4.6	1 U	8.8	5.5	3.1	1 U ¹	NA
	SW01-012516	1/25/2016	µg/L	17.6	2.3	36.0	11.3	6.3	1 U ¹	NA
	SW01-021816	2/18/2016	µg/L	23.4	3.0	55.6	15.0	9.1	1 U ¹	NA
	SW01-031616	3/16/2016	µg/L	20.1	2.4	42.3	13.3	7.6	1 U ¹	NA
	SW01-042716	4/27/2016	µg/L	20.8	1 U	30.6	2.9	2.0	1 U ¹	NA
	SW01-050916	5/9/2016	µg/L	16.5	1.4	16.3	7.0	4.8	1 U ¹	NA
	SW01-062716	6/27/2016	µg/L	9	1 U	3.3	2 U	1 U	1 U ¹	NA
	SW01-072816	7/28/2016	µg/L	1 U	1 U	1 U	2 U	1 U	1 U ¹	NA
SW01-081916	8/19/2016	µg/L	1 U	1 U	1 U	2 U	1 U	1 U ¹	NA	
SW01-092916	9/29/2016	µg/L	1 U	1 U	1 U	2 U	1 U	1 U ¹	NA	
SW-02	SW02-121114	12/11/2014	µg/L	0.5 U	1 U	1 U	2 U	1 U	1 U ¹	1 U
	SW02-022515	2/25/2015	µg/L	5 U ¹	5 U	5 U	10 U	5 U	5 U ¹	NA
	SW02-030215	3/2/2015	µg/L	5 U ¹	5 U	5 U	10 U	5 U	5 U ¹	NA
	SW02-031115	3/11/2015	µg/L	5 U ¹	5 U	5 U	10 U	5 U	5 U ¹	NA
	SW02-031815	3/18/2015	µg/L	5 U ¹	5 U	5 U	10 U	5 U	5 U ¹	NA
	SW02-033115	3/31/2015	µg/L	5 U ¹	5 U	6.0	10 U	5 U	5 U ¹	NA
	SW02-042215	4/22/2015	µg/L	5 U ¹	5 U	13.0	10 U	5 U	5 U ¹	NA
	SW02-050715	5/7/2015	µg/L	5 U ¹	5 U	5 U	10 U	5 U	5 U ¹	NA
	SW02-051915	5/19/2015	µg/L	5 U ¹	5 U	5 U	10 U	5 U	5 U ¹	NA
	SW02-060315	6/3/2015	µg/L	5 U ¹	5 U	5 U	10 U	5 U	5 U ¹	NA
	SW02-061815	6/18/2015	µg/L	5 U ¹	5 U	5 U	10 U	5 U	5 U ¹	NA
	SW02-071515	7/15/2015	µg/L	5 U ¹	5 U	5 U	10 U	5 U	5 U ¹	NA
	SW02-081315	8/13/2015	µg/L	5 U ¹	5 U	5 U	10 U	5 U	5 U ¹	NA
	SW02-092415	9/24/2015	µg/L	5 U ¹	5 U	5 U	10 U	5 U	5 U ¹	NA
	SW02-102215	10/22/2015	µg/L	1 U	1 U	1 U	2 U	1 U	1 U ¹	NA
	SW02-112415	11/24/2015	µg/L	6	1.3	10.0	7.8	4.0	1 U ¹	NA
	SW02-122215	12/22/2015	µg/L	4.1	1 U	7.6	5.1	3.1	1 U ¹	NA
	SW02-012516	1/25/2016	µg/L	12	1.5	25.0	8.4	4.6	1 U ¹	NA
	SW02-021816	2/18/2016	µg/L	15.5	1.8	35.3	10.1	5.9	1 U ¹	NA
	SW02-031616	3/16/2016	µg/L	8	1.0	17.5	5.8	3.9	1 U ¹	NA
	SW02-042716	4/27/2016	µg/L	5.6	1 U	7.1	2 U	1 U	1 U ¹	NA
	SW02-050916	5/9/2016	µg/L	7.1	1 U	4.5	2.2	1.6	1 U ¹	NA
	SW02-062716	6/27/2016	µg/L	1 U	1 U	1 U	2 U	1 U	1 U ¹	NA
	SW02-072816	7/28/2016	µg/L	1 U	1 U	1 U	2 U	1 U	1 U ¹	NA
SW02-081916	8/19/2016	µg/L	1 U	1 U	1 U	2 U	1 U	1 U ¹	NA	
SW02-092916	9/29/2016	µg/L	1 U	1 U	1 U	2 U	1 U	1 U ¹	NA	
SW-03	SW-UPGRADIENT	1/20/2015	µg/L	0.5 U	1 U	0.23 J	2 U	1 U	1 U ¹	1 U
	SW03-022515	2/25/2015	µg/L	5 U ¹	5 U	5 U	10 U	5 U	5 U ¹	NA
	SW03-030215	3/2/2015	µg/L	5 U ¹	5 U	5 U	10 U	5 U	5 U ¹	NA
	SW03-031115	3/11/2015	µg/L	5 U ¹	5 U	5 U	10 U	5 U	5 U ¹	NA
	SW03-031815	3/18/2015	µg/L	5 U ¹	5 U	5 U	10 U	5 U	5 U ¹	NA
	SW03-033115	3/31/2015	µg/L	5 U ¹	5 U	5 U	10 U	5 U	5 U ¹	NA
	SW03-042215	4/22/2015	µg/L	5 U ¹	5 U	5 U	10 U	5 U	5 U ¹	NA
	SW03-050715	5/7/2015	µg/L	5 U ¹	5 U	5 U	10 U	5 U	5 U ¹	NA
	SW03-051915	5/19/2015	µg/L	5 U ¹	5 U	5 U	10 U	5 U	5 U ¹	NA
	SW03-060315	6/3/2015	µg/L	5 U ¹	5 U	5 U	10 U	5 U	5 U ¹	NA
	SW03-061815	6/18/2015	µg/L	5 U ¹	5 U	5 U	10 U	5 U	5 U ¹	NA
	SW03-071515	7/15/2015	µg/L	5 U ¹	5 U	5 U	10 U	5 U	5 U ¹	NA
	SW03-081315	8/13/2015	µg/L	5 U ¹	5 U	5 U	10 U	5 U	5 U ¹	NA
	SW03-102215	10/22/2015	µg/L	1 U	1 U	1 U	2 U	1 U	1 U ¹	NA
	SW03-112415	11/24/2015	µg/L	1 U	1 U	1 U	2 U	1 U	1 U ¹	NA
	SW03-122215	12/22/2015	µg/L	1 U	1 U	1 U	2 U	1 U	1 U ¹	NA
	SW03-012516	1/25/2016	µg/L	1 U	1 U	1 U	2 U	1 U	1 U ¹	NA
	SW03-021816	2/18/2016	µg/L	1 U	1 U	1 U	2 U	1 U	1 U ¹	NA
	SW03-031616	3/16/2016	µg/L	1 U	1 U	1 U	2 U	1 U	1 U ¹	NA
	SW03-042716	4/27/2016	µg/L	1 U	1 U	1 U	2 U	1 U	1 U ¹	NA
	SW03-050916	5/9/2016	µg/L	1 U	1 U	1 U	2 U	1 U	1 U ¹	NA
	SW03-062716	6/27/2016	µg/L	1 U	1 U	1 U	2 U	1 U	1 U ¹	NA
	SW03-072816	7/28/2016	µg/L	1 U	1 U	1 U	2 U	1 U	1 U ¹	NA
	SW03-081916	8/19/2016	µg/L	1 U	1 U	1 U	2 U	1 U	1 U ¹	NA
SW03-092916	9/29/2016	µg/L	1 U	1 U	1 U	2 U	1 U	1 U ¹	NA	

Table 3. Analytical Results for Surface Water
 Lewis Drive Release, Belton, South Carolina
 Site ID #18693 "Kinder Morgan Belton Pipeline Release"

Location	Sample ID	Date Collected	Analyte Units	Benzene	Ethylbenzene	Toluene	m&p-Xylene	o-Xylene	Naphthalene	MTBE	
SW-04	SW-DOWNGRADIANT	1/20/2015	µg/L	95	27	310	110	63	94	2.7	
	SW04-022515	2/25/2015	µg/L	5 U ¹	5 U	5 U	10 U	5 U	5 U ¹	NA	
	SW04-030215	3/2/2015	µg/L	5 U ¹	5 U	5 U	10 U	5 U	5 U ¹	NA	
	SW04-031115	3/11/2015	µg/L	5 U ¹	5 U	5 U	10 U	5 U	5 U ¹	NA	
	SW04-031815	3/18/2015	µg/L	5 U ¹	5 U	5 U	10 U	5 U	5 U ¹	NA	
	SW04-033115	3/31/2015	µg/L	5 U ¹	5 U	5 U	10 U	5 U	5 U ¹	NA	
	SW04-042215	4/22/2015	µg/L	5 U ¹	5 U	5 U	10 U	5 U	5 U ¹	NA	
	SW04-050715	5/7/2015	µg/L	5 U ¹	5 U	5 U	10 U	5 U	5 U ¹	NA	
	SW04-051915	5/19/2015	µg/L	5 U ¹	5 U	5 U	10 U	5 U	5 U ¹	NA	
	SW04-060315	6/3/2015	µg/L	5 U ¹	5 U	5 U	10 U	5 U	5 U ¹	NA	
	SW04-061815	6/18/2015	µg/L	5 U ¹	5 U	5 U	10 U	5 U	5 U ¹	NA	
	SW04-071515	7/15/2015	µg/L	5 U ¹	5 U	5 U	10 U	5 U	5 U ¹	NA	
	SW04-081315	8/13/2015	µg/L	5 U ¹	5 U	5 U	10 U	5 U	5 U ¹	NA	
	SW04-092415	9/24/2015	µg/L	5 U ¹	5 U	5 U	10 U	5 U	5 U ¹	NA	
	SW04-102215	10/22/2015	µg/L	1 U	1 U	1 U	2 U	1 U	1 U ¹	NA	
	SW04-112415	11/24/2015	µg/L	1.7	1 U	2.7	2.9	1.6	1 U ¹	NA	
	SW04-122215	12/22/2015	µg/L	3.3	1 U	7.3	5.2	2.7	1 U ¹	NA	
	SW04-012516	1/25/2016	µg/L	6.9	1 U	14.0	4.9	2.8	1 U ¹	NA	
	SW04-021816	2/18/2016	µg/L	10.9	1.1	25.4	7.0	4.3	1 U ¹	NA	
	SW04-031616	3/16/2016	µg/L	1 U	1 U	2.0	2 U	1.8	1 U ¹	NA	
	SW04-042716	4/27/2016	µg/L	1 U	1 U	1 U	2 U	1 U	1 U ¹	NA	
	SW04-050916	5/9/2016	µg/L	1 U	1 U	1 U	2 U	1 U	1 U ¹	NA	
	SW04-062716	6/27/2016	µg/L	1 U	1 U	1.1	2 U	1 U	1 U ¹	NA	
	SW04-072816	7/28/2016	µg/L	1 U	1 U	23.5	2 U	1 U	1 U ¹	NA	
	SW04-081916	8/19/2016	µg/L	1 U	1 U	23.5	2 U	1 U	1 U ¹	NA	
	SW04-092916	9/29/2016	µg/L	1 U	1 U	23.5	2 U	1 U	1 U ¹	NA	
	SW-05	SW05-022515	2/25/2015	µg/L	5 U ¹	5 U	5 U	10 U	5 U	5 U ¹	NA
		SW05-030215	3/2/2015	µg/L	5 U ¹	5 U	5 U	10 U	5 U	5 U ¹	NA
SW05-031115		3/11/2015	µg/L	5 U ¹	5 U	5 U	10 U	5 U	5 U ¹	NA	
SW05-031815		3/18/2015	µg/L	5 U ¹	5 U	5 U	10 U	5 U	5 U ¹	NA	
SW05-033115		3/31/2015	µg/L	5 U ¹	5 U	5 U	10 U	5 U	5 U ¹	NA	
SW05-042215		4/22/2015	µg/L	5 U ¹	5 U	5 U	10 U	5 U	5 U ¹	NA	
SW05-050715		5/7/2015	µg/L	5 U ¹	5 U	5 U	10 U	5 U	5 U ¹	NA	
SW05-112415		11/24/2015	µg/L	1 U	1 U	1 U	2 U	1 U	1 U ¹	NA	
SW05-122215		12/22/2015	µg/L	1 U	1 U	1 U	2 U	1 U	1 U ¹	NA	
SW05-012516		1/25/2016	µg/L	1 U	1 U	1 U	2 U	1 U	1 U ¹	NA	
SW05-021816		2/18/2016	µg/L	1 U	1 U	1 U	2 U	1 U	1 U ¹	NA	
SW05-031616		3/16/2016	µg/L	1 U	1 U	1 U	2 U	1 U	1 U ¹	NA	
SW-06	SW06-022515	2/25/2015	µg/L	5 U ¹	5 U	5 U	10 U	5 U	5 U ¹	NA	
	SW06-030215	3/2/2015	µg/L	5 U ¹	5 U	5 U	10 U	5 U	5 U ¹	NA	
	SW06-031115	3/11/2015	µg/L	5 U ¹	5 U	5 U	10 U	5 U	5 U ¹	NA	
	SW06-031815	3/18/2015	µg/L	5 U ¹	5 U	5 U	10 U	5 U	5 U ¹	NA	
	SW06-042215	4/22/2015	µg/L	5 U ¹	5 U	5 U	10 U	5 U	5 U ¹	NA	
	SW06-122215	12/22/2015	µg/L	1 U	1 U	1 U	2 U	1 U	1 U ¹	NA	
	SW06-012516	1/25/2016	µg/L	1 U	1 U	1 U	2 U	1 U	1 U ¹	NA	
	SW06-021816	2/18/2016	µg/L	1 U	1 U	1 U	2 U	1 U	1 U ¹	NA	
SW-07	SW07-022515	2/25/2015	µg/L	5 U ¹	5 U	5 U	10 U	5 U	5 U ¹	NA	
	SW07-030215	3/2/2015	µg/L	5 U ¹	5 U	5 U	10 U	5 U	5 U ¹	NA	
	SW07-031115	3/11/2015	µg/L	5 U ¹	5 U	5 U	10 U	5 U	5 U ¹	NA	
	SW07-031815	3/18/2015	µg/L	5 U ¹	5 U	5 U	10 U	5 U	5 U ¹	NA	
	SW07-033115	3/31/2015	µg/L	5 U ¹	5 U	5 U	10 U	5 U	5 U ¹	NA	
	SW07-042215	4/22/2015	µg/L	5 U ¹	5 U	5 U	10 U	5 U	5 U ¹	NA	
	SW07-050715	5/7/2015	µg/L	5 U ¹	5 U	5 U	10 U	5 U	5 U ¹	NA	
	SW07-051915	5/19/2015	µg/L	5 U ¹	5 U	5 U	10 U	5 U	5 U ¹	NA	
	SW07-060315	6/3/2015	µg/L	5 U ¹	5 U	5 U	10 U	5 U	5 U ¹	NA	
	SW07-061815	6/18/2015	µg/L	5 U ¹	5 U	5 U	10 U	5 U	5 U ¹	NA	
	SW07-071515	7/15/2015	µg/L	5 U ¹	5 U	5 U	10 U	5 U	5 U ¹	NA	
	SW07-102215	10/22/2015	µg/L	1 U	1 U	1 U	2 U	1 U	1 U ¹	NA	
	SW07-112415	11/24/2015	µg/L	1 U	1 U	1 U	2 U	1 U	1 U ¹	NA	
	SW07-122215	12/22/2015	µg/L	1 U	1 U	1 U	2 U	1 U	1 U ¹	NA	
	SW07-012516	1/25/2016	µg/L	1 U	1 U	1 U	2 U	1 U	1 U ¹	NA	
	SW07-021816	2/18/2016	µg/L	1 U	1 U	1 U	2 U	1 U	1 U ¹	NA	
	SW07-031616	3/16/2016	µg/L	1 U	1 U	1 U	2 U	1 U	1 U ¹	NA	
SW07-042716	4/27/2016	µg/L	1 U	1 U	1 U	2 U	1 U	1 U ¹	NA		
SW07-050916	5/9/2016	µg/L	1 U	1 U	1 U	2 U	1 U	1 U ¹	NA		

Table 3. Analytical Results for Surface Water
 Lewis Drive Release, Belton, South Carolina
 Site ID #18693 "Kinder Morgan Belton Pipeline Release"

Location	Sample ID	Date Collected	Analyte: Units	Benzene	Ethylbenzene	Toluene	m&p-Xylene	o-Xylene	Naphthalene	MTBE
SW-08	SW08-022515	2/25/2015	µg/L	5 U ¹	5 U	5 U	10 U	5 U	5 U ¹	NA
	SW08-030215	3/2/2015	µg/L	5 U ¹	5 U	5 U	10 U	5 U	5 U ¹	NA
	SW08-031115	3/11/2015	µg/L	5 U ¹	5 U	5 U	10 U	5 U	5 U ¹	NA
	SW08-031815	3/18/2015	µg/L	5 U ¹	5 U	5 U	10 U	5 U	5 U ¹	NA
	SW08-033115	3/31/2015	µg/L	5 U ¹	5 U	5 U	10 U	5 U	5 U ¹	NA
	SW08-042215	4/22/2015	µg/L	5 U ¹	5 U	5 U	10 U	5 U	5 U ¹	NA
	SW08-050715	5/7/2015	µg/L	5 U ¹	5 U	5 U	10 U	5 U	5 U ¹	NA
	SW08-051915	5/19/2015	µg/L	5 U ¹	5 U	5 U	10 U	5 U	5 U ¹	NA
	SW08-060315	6/3/2015	µg/L	5 U ¹	5 U	5 U	10 U	5 U	5 U ¹	NA
	SW08-061815	6/18/2015	µg/L	5 U ¹	5 U	5 U	10 U	5 U	5 U ¹	NA
	SW08-071515	7/15/2015	µg/L	5 U ¹	5 U	5 U	10 U	5 U	5 U ¹	NA
	SW08-081315	8/13/2015	µg/L	5 U ¹	5 U	5 U	10 U	5 U	5 U ¹	NA
	SW08-092415	9/24/2015	µg/L	5 U ¹	5 U	5 U	10 U	5 U	5 U ¹	NA
	SW08-102215	10/22/2015	µg/L	1 U	1 U	1 U	2 U	1 U	1 U ¹	NA
	SW08-112415	11/24/2015	µg/L	1 U	1 U	1 U	2 U	1 U	1 U ¹	NA
	SW08-122215	12/22/2015	µg/L	1.6	1 U	3.8	2.5	1.6	1 U ¹	NA
	SW08-012516	1/25/2016	µg/L	2.4	1 U	5.6	2	1.3	1 U ¹	NA
	SW08-021816	2/18/2016	µg/L	2.9	1 U	7.6	2.3	1.5	1 U ¹	NA
	SW08-031616	3/16/2016	µg/L	1 U	1 U	1 U	2 U	1 U	1 U ¹	NA
	SW08-042716	4/27/2016	µg/L	1 U	1 U	1 U	2 U	1 U	1 U ¹	NA
SW08-050916	5/9/2016	µg/L	1 U	1 U	1 U	2 U	1 U	1 U ¹	NA	
SW08-062716	6/27/2016	µg/L	1 U	1 U	1 U	2 U	1 U	1 U ¹	NA	
SW08-072816	7/28/2016	µg/L	1 U	1 U	1 U	2 U	1 U	1 U ¹	NA	
SW08-081916	8/19/2016	µg/L	1 U	1 U	1 U	2 U	1 U	1 U ¹	NA	
SW08-092916	9/29/2016	µg/L	1 U	1 U	1 U	2 U	1 U	1 U ¹	NA	
SW-09	SW09-022515	2/25/2015	µg/L	5 U ¹	5 U	5 U	10 U	5 U	5 U ¹	NA
	SW09-030215	3/2/2015	µg/L	5 U ¹	5 U	5 U	10 U	5 U	5 U ¹	NA
	SW09-031115	3/11/2015	µg/L	5 U ¹	5 U	5 U	10 U	5 U	5 U ¹	NA
	SW09-031815	3/18/2015	µg/L	5 U ¹	5 U	5 U	10 U	5 U	5 U ¹	NA
	SW09-033115	3/31/2015	µg/L	5 U ¹	5 U	5 U	10 U	5 U	5 U ¹	NA
	SW09-042215	4/22/2015	µg/L	5 U ¹	5 U	5 U	10 U	5 U	5 U ¹	NA
	SW09-050715	5/7/2015	µg/L	5 U ¹	5 U	5 U	10 U	5 U	5 U ¹	NA
	SW09-051915	5/19/2015	µg/L	5 U ¹	5 U	5 U	10 U	5 U	5 U ¹	NA
	SW09-060315	6/3/2015	µg/L	5 U ¹	5 U	5 U	10 U	5 U	5 U ¹	NA
	SW09-061815	6/18/2015	µg/L	5 U ¹	5 U	5 U	10 U	5 U	5 U ¹	NA
	SW09-071515	7/15/2015	µg/L	5 U ¹	5 U	5 U	10 U	5 U	5 U ¹	NA
	SW09-081315	8/13/2015	µg/L	5 U ¹	5 U	5 U	10 U	5 U	5 U ¹	NA
	SW09-092415	9/24/2015	µg/L	5 U ¹	5 U	5 U	10 U	5 U	5 U ¹	NA
	SW09-102215	10/22/2015	µg/L	1 U	1 U	1 U	2 U	1 U	1 U ¹	NA
	SW09-112415	11/24/2015	µg/L	1 U	1 U	1 U	2 U	1 U	1 U ¹	NA
	SW09-122215	12/22/2015	µg/L	2.1	1 U	4.8	3.3	2.1	1 U ¹	NA
	SW09-012516	1/25/2016	µg/L	3.3	1 U	7.1	2.4	1.5	1 U ¹	NA
	SW09-021816	2/18/2016	µg/L	2.2	1 U	5.9	2 U	1.2	1 U ¹	NA
	SW09-031616	3/16/2016	µg/L	1 U	1 U	1 U	2 U	1 U	1 U ¹	NA
	SW09-042716	4/27/2016	µg/L	1 U	1 U	1 U	2 U	1 U	1 U ¹	NA
SW09-050916	5/9/2016	µg/L	1 U	1 U	1 U	2 U	1 U	1 U ¹	NA	
SW09-062716	6/27/2016	µg/L	1 U	1 U	1 U	2 U	1 U	1 U ¹	NA	
SW09-072816	7/28/2016	µg/L	1 U	1 U	1 U	2 U	1 U	1 U ¹	NA	
SW09-081916	8/19/2016	µg/L	1 U	1 U	1 U	2 U	1 U	1 U ¹	NA	
SW09-092916	9/29/2016	µg/L	1 U	1 U	1 U	2 U	1 U	1 U ¹	NA	
SW-10	SW10-022515	2/25/2015	µg/L	5 U ¹	5 U	5 U	10 U	5 U	5 U ¹	NA
	SW10-030215	3/2/2015	µg/L	5 U ¹	5 U	5 U	10 U	5 U	5 U ¹	NA
	SW10-031115	3/11/2015	µg/L	5 U ¹	5 U	5 U	10 U	5 U	5 U ¹	NA
	SW10-031815	3/18/2015	µg/L	5 U ¹	5 U	5 U	10 U	5 U	5 U ¹	NA
	SW10-033115	3/31/2015	µg/L	5 U ¹	5 U	5 U	10 U	5 U	5 U ¹	NA
	SW10-042215	4/22/2015	µg/L	5 U ¹	5 U	5 U	10 U	5 U	5 U ¹	NA
	SW10-050715	5/7/2015	µg/L	5 U ¹	5 U	5 U	10 U	5 U	5 U ¹	NA
	SW10-051915	5/19/2015	µg/L	5 U ¹	5 U	5 U	10 U	5 U	5 U ¹	NA
	SW10-060315	6/3/2015	µg/L	5 U ¹	5 U	5 U	10 U	5 U	5 U ¹	NA
	SW10-061815	6/18/2015	µg/L	5 U ¹	5 U	5 U	10 U	5 U	5 U ¹	NA
	SW10-071515	7/15/2015	µg/L	5 U ¹	5 U	5 U	10 U	5 U	5 U ¹	NA
	SW10-081315	8/13/2015	µg/L	5 U ¹	5 U	5 U	10 U	5 U	5 U ¹	NA
	SW10-092415	9/24/2015	µg/L	5 U ¹	5 U	5 U	10 U	5 U	5 U ¹	NA
	SW10-102215	10/22/2015	µg/L	1 U	1 U	1 U	2 U	1 U	1 U ¹	NA
	SW10-112415	11/24/2015	µg/L	1 U	1 U	1 U	2 U	1 U	1 U ¹	NA
	SW10-122215	12/22/2015	µg/L	1 U	1 U	1 U	2 U	1 U	1 U ¹	NA
	SW10-012516	1/25/2016	µg/L	1 U	1 U	1 U	2 U	1 U	1 U ¹	NA
	SW10-021816	2/18/2016	µg/L	1 U	1 U	1 U	2 U	1 U	1 U ¹	NA
	SW10-031616	3/16/2016	µg/L	1 U	1 U	1 U	2 U	1 U	1 U ¹	NA
	SW10-042716	4/27/2016	µg/L	1 U	1 U	1 U	2 U	1 U	1 U ¹	NA
SW10-050916	5/9/2016	µg/L	1 U	1 U	1 U	2 U	1 U	1 U ¹	NA	
SW10-062716	6/27/2016	µg/L	1 U	1 U	1 U	2 U	1 U	1 U ¹	NA	
SW10-072816	7/28/2016	µg/L	1 U	1 U	1 U	2 U	1 U	1 U ¹	NA	
SW10-081916	8/19/2016	µg/L	1 U	1 U	1 U	2 U	1 U	1 U ¹	NA	
SW10-092916	9/29/2016	µg/L	1 U	1 U	1 U	2 U	1 U	1 U ¹	NA	

Table 3. Analytical Results for Surface Water
 Lewis Drive Release, Belton, South Carolina
 Site ID #18693 "Kinder Morgan Belton Pipeline Release"

Location	Sample ID	Date Collected	Analyte: Units	Benzene	Ethylbenzene	Toluene	m&p-Xylene	o-Xylene	Naphthalene	MTBE	
SW-11	SW11-022515	2/25/2015	µg/L	5 U ¹	5 U	5 U	10 U	5 U	5 U ¹	NA	
	SW11-030215	3/2/2015	µg/L	5 U ¹	5 U	5 U	10 U	5 U	5 U ¹	NA	
	SW11-031115	3/11/2015	µg/L	5 U ¹	5 U	5 U	10 U	5 U	5 U ¹	NA	
	SW11-031815	3/18/2015	µg/L	5 U ¹	5 U	5 U	10 U	5 U	5 U ¹	NA	
	SW11-033115	3/31/2015	µg/L	5 U ¹	5 U	5 U	10 U	5 U	5 U ¹	NA	
	SW11-042215	4/22/2015	µg/L	5 U ¹	5 U	5 U	10 U	5 U	5 U ¹	NA	
	SW11-050715	5/7/2015	µg/L	5 U ¹	5 U	5 U	10 U	5 U	5 U ¹	NA	
	SW11-051915	5/19/2015	µg/L	5 U ¹	5 U	5 U	10 U	5 U	5 U ¹	NA	
	SW11-060315	6/3/2015	µg/L	5 U ¹	5 U	5 U	10 U	5 U	5 U ¹	NA	
	SW11-061815	6/18/2015	µg/L	5 U ¹	5 U	5 U	10 U	5 U	5 U ¹	NA	
	SW11-071515	7/15/2015	µg/L	5 U ¹	5 U	5 U	10 U	5 U	5 U ¹	NA	
	SW11-081315	8/13/2015	µg/L	5 U ¹	5 U	5 U	10 U	5 U	5 U ¹	NA	
	SW11-092415	9/24/2015	µg/L	5 U ¹	5 U	5 U	10 U	5 U	5 U ¹	NA	
	SW11-102215	10/22/2015	µg/L	1 U	1 U	1 U	2 U	1 U	1 U ¹	NA	
	SW11-112415	11/24/2015	µg/L	1 U	1 U	1 U	2 U	1 U	1 U ¹	NA	
	SW11-122215	12/22/2015	µg/L	1 U	1 U	1 U	2 U	1 U	1 U ¹	NA	
	SW11-012516	1/25/2016	µg/L	1 U	1 U	1 U	2 U	1 U	1 U ¹	NA	
	SW11-021816	2/18/2016	µg/L	1 U	1 U	1 U	2 U	1 U	1 U ¹	NA	
	SW11-031616	3/16/2016	µg/L	1 U	1 U	1 U	2 U	1 U	1 U ¹	NA	
	SW11-042716	4/27/2016	µg/L	1 U	1 U	1 U	2 U	1 U	1 U ¹	NA	
	SW11-050916	5/9/2016	µg/L	1 U	1 U	1 U	2 U	1 U	1 U ¹	NA	
	SW11-062716	6/27/2016	µg/L	1 U	1 U	1 U	2 U	1 U	1 U ¹	NA	
	SW11-072816	7/28/2016	µg/L	1 U	1 U	1 U	2 U	1 U	1 U ¹	NA	
SW11-081916	8/19/2016	µg/L	1 U	1 U	1 U	2 U	1 U	1 U ¹	NA		
SW11-092916	9/29/2016	µg/L	1 U	1 U	1 U	2 U	1 U	1 U ¹	NA		
SW-12	SW12-081916	8/19/2016	µg/L	6,430	764	15,400	3,360	1,730	128	NA	
SW-12	SW12-092916	9/29/2016	µg/L	7,850	1,030	19,000	3,910	1,940	143	NA	
SW-13	SW13-081916	8/19/2016	µg/L	1 U	1 U	1 U	2 U	1 U	1 U ¹	NA	
SW-13	SW13-092916	9/29/2016	µg/L	1 U	1 U	1 U	2 U	1 U	1 U ¹	NA	
FP-01	FP-01-031616	3/16/2016	µg/L	1 U	1 U	1 U	2 U	1 U	1 U ¹	NA	
	FP01-042716	4/27/2016	µg/L	1 U	1 U	1 U	2 U	1 U	1 U ¹	NA	
	FP01-050916	5/9/2016	µg/L	1 U	1 U	1 U	2 U	1 U	1 U ¹	NA	
	FP01-062716	6/27/2016	µg/L	1 U	1 U	1 U	2 U	1 U	1 U ¹	NA	
	FP01-072816	7/28/2016	µg/L	1 U	1 U	1 U	2 U	1 U	1 U ¹	NA	
	FP01-081916	8/19/2016	µg/L	1 U	1 U	1 U	2 U	1 U	1 U ¹	NA	
	FP01-092916	9/29/2016	µg/L	1 U	1 U	1 U	2 U	1 U	1 U ¹	NA	
FP-02	FP-02-031616	3/16/2016	µg/L	1 U	1 U	1 U	2 U	1 U	1 U ¹	NA	
	FP02-042716	4/27/2016	µg/L	1 U	1 U	1 U	2 U	1 U	1 U ¹	NA	
	FP02-050916	5/9/2016	µg/L	1 U	1 U	1 U	2 U	1 U	1 U ¹	NA	
	FP02-062716	6/27/2016	µg/L	1 U	1 U	1 U	2 U	1 U	1 U ¹	NA	
	FP02-072816	7/28/2016	µg/L	1 U	1 U	1 U	2 U	1 U	1 U ¹	NA	
	FP02-081916	8/19/2016	µg/L	1 U	1 U	1 U	2 U	1 U	1 U ¹	NA	
	FP02-092916	9/29/2016	µg/L	1 U	1 U	1 U	2 U	1 U	1 U ¹	NA	
FP-03	FP-03-031616	3/16/2016	µg/L	1 U	1 U	1 U	2 U	1 U	1 U ¹	NA	
	FP03-042716	4/27/2016	µg/L	1 U	1 U	1 U	2 U	1 U	1 U ¹	NA	
	FP03-050916	5/9/2016	µg/L	1 U	1 U	1 U	2 U	1 U	1 U ¹	NA	
	FP03-062716	6/27/2016	µg/L	1 U	1 U	1 U	2 U	1 U	1 U ¹	NA	
	FP03-072816	7/28/2016	µg/L	1 U	1 U	1 U	2 U	1 U	1 U ¹	NA	
	FP03-081916	8/19/2016	µg/L	1 U	1 U	1 U	2 U	1 U	1 U ¹	NA	
	FP03-092916	9/29/2016	µg/L	1 U	1 U	1 U	2 U	1 U	1 U ¹	NA	
Screening Value:				µg/L	2.2 ^a	530 ^a	1,000 ^a	190 ^{b,c}	190 ^b	0.17 ^b	14 ^b

Notes:

^a South Carolina Department of Health and Environmental Control (SC DHEC) R.61-68, Water Classifications and Standards, Human Health for consumption of water and organism, June 22, 2012

^b U.S. Environmental Protection Agency (EPA) Regional Screening Levels (RSLs). Tapwater, June 2015. RSLs based on hazard quotient (HQ) = 1 and cancer risk = 1 x 10⁻⁶

^c RSL value for total xylenes used for m&p-Xylene

¹ The analyte was analyzed for, but was not detected above the laboratory reporting/quantitation limit. However, the laboratory reporting/quantitation limit is above the screening criteria. The actual absence or presence of this analyte between the screening criteria and the laboratory reporting/quantitation limit can not be determined.

Samples analyzed for volatile organic compounds by EPA method SW 8260B

ID = Identification

J = estimated value between method detection limit and the reporting limit

MTBE = methyl tertiary butyl ether

NA = not analyzed

U = analyte was not detected above the reported sample quantitation limit

µg/L = microgram(s) per liter

Bold indicates the analyte was detected above the laboratory reporting/quantitation limit.

Gray shading indicates the analyte exceeded screening criteria.

Table 4. Groundwater Elevation and Product Thickness Data
Plantation Pipe Line Company
Lewis Drive Release, Belton, South Carolina
Site ID #18693 "Kinder Morgan Belton Pipeline Release"

Location ID	Date	Depth to Product (ft BTOC)	Depth to Water (ft BTOC)	Product Thickness (ft)	Top of Casing Elevation ¹ (ft amsl)	Groundwater Elevation (ft amsl)	Corrected ² Groundwater Elevation (ft amsl)
MW-01					853.07		
	9/27/2016	-	13.89	-		839.18	-
	9/19/2016	-	13.61	-		839.46	-
	9/12/2016	-	13.41	-		839.66	-
	9/9/2016	-	13.25	-		839.82	-
	9/6/2016	-	12.72	-		840.35	-
	9/2/2016	-	12.88	-		840.19	-
MW-01B					852.99		
	9/27/2016	-	13.11	-		839.88	-
	9/19/2016	-	12.83	-		840.16	-
	9/12/2016	-	12.60	-		840.39	-
	9/9/2016	-	12.50	-		840.49	-
	9/6/2016	-	12.12	-		840.87	-
	9/2/2016	-	12.10	-		840.89	-
MW-02					841.04		
	9/27/2016	-	10.83	-		830.21	-
	9/19/2016	9.81	10.13	0.32		830.91	831.14
	9/12/2016	9.74	10.10	0.36		830.94	831.20
	9/9/2016	9.69	10.12	0.43		830.92	831.24
	9/6/2016	9.67	10.08	0.41		830.96	831.26
	9/2/2016	9.69	10.01	0.32		831.03	831.26
MW-02B					841.18		
	9/27/2016	-	11.13	-		830.05	-
	9/19/2016	-	10.61	-		830.57	-
	9/12/2016	-	10.56	-		830.62	-
	9/9/2016	-	10.45	-		830.73	-
	9/6/2016	-	10.34	-		830.84	-
	9/2/2016	-	10.25	-		830.93	-
MW-03					838.36		
	9/27/2016	-	10.88	-		827.48	-
	9/19/2016	-	10.72	-		827.64	-
	9/12/2016	-	10.64	-		827.72	-
	9/9/2016	-	10.57	-		827.79	-
	9/6/2016	-	10.49	-		827.87	-
	9/2/2016	-	10.39	-		827.97	-
MW-04					844.42		
	9/27/2016	-	12.78	-		831.64	-
	9/19/2016	-	12.66	-		831.76	-
	9/12/2016	-	12.61	-		831.81	-
	9/9/2016	-	12.56	-		831.86	-
	9/6/2016	-	12.42	-		832.00	-
	9/2/2016	-	12.36	-		832.06	-
MW-05					851.11		
	9/27/2016	-	12.54	-		838.57	-
	9/19/2016	-	12.34	-		838.77	-
	9/12/2016	-	16.28	-		834.83	-
	9/9/2016	-	16.21	-		834.90	-
	9/6/2016	-	16.14	-		834.97	-
	9/2/2016	-	16.20	-		834.91	-
MW-06					852.92		

Table 4. Groundwater Elevation and Product Thickness Data

Plantation Pipe Line Company

Lewis Drive Release, Belton, South Carolina

Site ID #18693 "Kinder Morgan Belton Pipeline Release"

Location ID	Date	Depth to Product (ft BTOC)	Depth to Water (ft BTOC)	Product Thickness (ft)	Top of Casing Elevation ¹ (ft amsl)	Groundwater Elevation (ft amsl)	Corrected ² Groundwater Elevation (ft amsl)
MW-06 (cont'd)	9/27/2016	-	14.36	-		838.56	-
	9/19/2016	-	14.05	-		838.87	-
	9/12/2016	-	13.98	-		838.94	-
	9/9/2016	-	13.93	-		838.99	-
	9/6/2016	-	13.88	-		839.04	-
	9/2/2016	-	13.85	-		839.07	-
MW-07					853.02		
	9/27/2016	-	13.68	-		839.34	-
	9/19/2016	-	13.55	-		839.47	-
	9/12/2016	-	13.46	-		839.56	-
	9/9/2016	-	13.37	-		839.65	-
	9/6/2016	-	13.26	-		839.76	-
MW-08					844.72		
	9/27/2016	-	13.72	-		831.00	-
	9/19/2016	-	13.43	-		831.29	-
	9/12/2016	-	13.54	-		831.18	-
	9/9/2016	-	13.38	-		831.34	-
	9/6/2016	-	13.31	-		831.41	-
MW-09					843.63		
	9/27/2016	9.88	10.96	1.08		832.67	833.46
	9/19/2016	9.74	10.89	1.15		832.74	833.58
	9/12/2016	9.20	10.83	1.63		832.80	833.99
	9/9/2016	9.60	10.78	1.18		832.85	833.71
	9/6/2016	9.67	10.88	1.21		832.75	833.64
MW-10					845.41		
	9/27/2016	-	17.98	-		827.43	-
	9/19/2016	-	17.81	-		827.60	-
	9/12/2016	-	17.73	-		827.68	-
	9/9/2016	-	17.40	-		828.01	-
	9/6/2016	-	17.36	-		828.05	-
MW-11					855.63		
	9/27/2016	29.73	31.10	1.37		824.53	825.53
	9/19/2016	29.28	30.57	1.29		825.06	826.00
	9/12/2016	29.13	30.10	0.97		825.53	826.24
	9/9/2016	29.00	29.93	0.93		825.70	826.38
	9/6/2016	28.71	29.56	0.85		826.07	826.69
MW-12					834.53		
	9/27/2016	15.02	16.18	1.16		818.35	819.20
	9/19/2016	14.80	15.92	1.12		818.61	819.43
	9/12/2016	14.60	15.70	1.10		818.83	819.64
	9/9/2016	14.49	15.46	0.97		819.07	819.78
	9/6/2016	14.28	15.33	1.05		819.20	819.97
MW-12B					834.98		
	9/27/2016	-	15.65	-		819.33	-

Table 4. Groundwater Elevation and Product Thickness Data
 Plantation Pipe Line Company
 Lewis Drive Release, Belton, South Carolina
 Site ID #18693 "Kinder Morgan Belton Pipeline Release"

Location ID	Date	Depth to Product (ft BTOC)	Depth to Water (ft BTOC)	Product Thickness (ft)	Top of Casing Elevation ¹ (ft amsl)	Groundwater Elevation (ft amsl)	Corrected ² Groundwater Elevation (ft amsl)
MW-12B (cont'd)	9/19/2016	-	15.45	-		819.53	-
	9/12/2016	-	15.26	-		819.72	-
	9/9/2016	-	15.13	-		819.85	-
	9/6/2016	-	14.91	-		820.07	-
	9/2/2016	-	14.85	-		820.13	-
MW-13					848.84		
	9/27/2016	-	21.89	-		826.95	-
	9/19/2016	-	21.79	-		827.05	-
	9/12/2016	-	21.85	-		826.99	-
	9/9/2016	-	21.10	-		827.74	-
	9/6/2016	-	21.18	-		827.66	-
MW-13B					849.82		
	9/27/2016	-	22.76	-		827.06	-
	9/19/2016	-	22.54	-		827.28	-
	9/12/2016	-	22.65	-		827.17	-
	9/9/2016	-	22.42	-		827.40	-
	9/6/2016	-	22.36	-		827.46	-
MW-14					838.70		
	9/27/2016	-	17.76	-		820.94	-
	9/19/2016	-	17.73	-		820.97	-
	9/12/2016	-	17.80	-		820.90	-
	9/9/2016	-	17.51	-		821.19	-
	9/6/2016	-	17.58	-		821.12	-
MW-14B					840.20		
	9/27/2016	-	18.95	-		821.25	-
	9/19/2016	-	18.82	-		821.38	-
	9/12/2016	-	18.80	-		821.40	-
	9/9/2016	-	20.03	-		820.17	-
	9/6/2016	-	20.10	-		820.10	-
MW-15					831.03		
	9/27/2016	-	13.41	-		817.62	-
	9/19/2016	-	13.28	-		817.75	-
	9/12/2016	-	13.33	-		817.70	-
	9/9/2016	-	13.20	-		817.83	-
	9/6/2016	-	13.16	-		817.87	-
MW-15B					831.29		
	9/27/2016	-	16.66	-		814.63	-
	9/19/2016	-	16.46	-		814.83	-
	9/12/2016	-	17.12	-		814.17	-
	9/9/2016	-	17.05	-		814.24	-
	9/6/2016	-	17.28	-		814.01	-
MW-16					847.67		
	9/27/2016	12.21	13.33	1.12		834.34	835.15
	9/19/2016	12.12	13.34	1.22		834.33	835.22

Table 4. Groundwater Elevation and Product Thickness Data

Plantation Pipe Line Company

Lewis Drive Release, Belton, South Carolina

Site ID #18693 "Kinder Morgan Belton Pipeline Release"

Location ID	Date	Depth to Product (ft BTOC)	Depth to Water (ft BTOC)	Product Thickness (ft)	Top of Casing Elevation ¹ (ft amsl)	Groundwater Elevation (ft amsl)	Corrected ² Groundwater Elevation (ft amsl)
MW-16 (cont'd)	9/12/2016	12.08	13.29	1.21		834.38	835.26
	9/9/2016	12.05	13.22	1.17		834.45	835.30
	9/6/2016	11.71	12.33	0.62		835.34	835.79
	9/2/2016	10.36	10.86	0.50		836.81	837.17
MW-17					855.35		
	9/27/2016	-	11.57	-		843.78	-
	9/19/2016	-	11.43	-		843.92	-
	9/12/2016	-	11.33	-		844.02	-
	9/9/2016	-	11.28	-		844.07	-
	9/6/2016	-	11.21	-		844.14	-
MW-17B					855.37		
	9/27/2016	-	15.72	-		839.65	-
	9/19/2016	-	15.68	-		839.69	-
	9/12/2016	-	15.65	-		839.72	-
	9/9/2016	-	15.59	-		839.78	-
	9/6/2016	-	15.57	-		839.80	-
MW-18					846.89		
	9/27/2016	14.44	15.73	1.29		831.16	832.10
	9/19/2016	14.33	15.67	1.34		831.22	832.19
	9/12/2016	14.24	15.61	1.37		831.28	832.28
	9/9/2016	14.17	15.46	1.29		831.43	832.37
	9/6/2016	14.10	15.41	1.31		831.48	832.43
MW-19					853.94		
	9/27/2016	-	11.75	-		842.19	-
	9/19/2016	-	11.86	-		842.08	-
	9/12/2016	-	11.93	-		842.01	-
	9/9/2016	-	11.85	-		842.09	-
	9/6/2016	-	11.80	-		842.14	-
MW-20					852.89		
	9/27/2016	11.81	13.68	1.87		839.21	840.57
	9/19/2016	11.93	13.78	1.85		839.11	840.46
	9/12/2016	11.82	13.62	1.80		839.27	840.58
	9/9/2016	11.71	13.50	1.79		839.39	840.69
	9/6/2016	11.66	13.47	1.81		839.42	840.74
MW-21					855.77		
	9/27/2016	-	16.73	-		839.04	-
	9/19/2016	-	16.80	-		838.97	-
	9/12/2016	-	16.74	-		839.03	-
	9/9/2016	-	16.69	-		839.08	-
	9/6/2016	-	16.60	-		839.17	-
MW-22					854.60		
	9/27/2016	-	15.86	-		838.74	-
	9/19/2016	-	15.84	-		838.76	-
	9/12/2016	-	15.79	-		838.81	-

Table 4. Groundwater Elevation and Product Thickness Data
Plantation Pipe Line Company
Lewis Drive Release, Belton, South Carolina
Site ID #18693 "Kinder Morgan Belton Pipeline Release"

Location ID	Date	Depth to Product (ft BTOC)	Depth to Water (ft BTOC)	Product Thickness (ft)	Top of Casing Elevation ¹ (ft amsl)	Groundwater Elevation (ft amsl)	Corrected ² Groundwater Elevation (ft amsl)
MW-22 (cont'd)	9/9/2016	-	10.74	-		843.86	-
	9/6/2016	-	10.66	-		843.94	-
	9/2/2016	-	10.61	-		843.99	-
MW-23					849.57		
	9/27/2016	-	10.60	-		838.97	-
	9/19/2016	-	10.66	-		838.91	-
	9/12/2016	-	10.72	-		838.85	-
	9/9/2016	-	10.66	-		838.91	-
	9/6/2016	-	10.62	-		838.95	-
MW-23B					849.69		
	9/27/2016	-	7.03	-		842.66	-
	9/19/2016	-	7.10	-		842.59	-
	9/12/2016	-	7.20	-		842.49	-
	9/9/2016	-	7.14	-		842.55	-
	9/6/2016	-	7.12	-		842.57	-
MW-24					817.92		
	9/27/2016	-	5.15	-		812.77	-
	9/19/2016	-	5.28	-		812.64	-
	9/12/2016	-	5.35	-		812.57	-
	9/9/2016	-	8.41	-		809.51	-
	9/6/2016	-	8.37	-		809.55	-
MW-24B					818.72		
	9/27/2016	-	6.25	-		812.47	-
	9/19/2016	-	6.30	-		812.42	-
	9/12/2016	-	6.23	-		812.49	-
	9/9/2016	-	27.30	-		791.42	-
	9/6/2016	-	27.19	-		791.53	-
MW-25					826.18		
	9/27/2016	-	8.88	-		817.30	-
	9/19/2016	-	8.93	-		817.25	-
	9/12/2016	-	8.85	-		817.33	-
	9/9/2016	-	8.58	-		817.60	-
	9/6/2016	-	8.53	-		817.65	-
MW-25B					823.81		
	9/27/2016	-	5.83	-		817.98	-
	9/19/2016	-	5.90	-		817.91	-
	9/12/2016	-	5.81	-		818.00	-
	9/9/2016	-	5.71	-		818.10	-
	9/6/2016	-	5.61	-		818.20	-
MW-26					847.56		
	9/27/2016	-	7.81	-		839.75	-
	9/19/2016	-	7.70	-		839.86	-
	9/12/2016	-	7.65	-		839.91	-
	9/9/2016	-	7.19	-		840.37	-

Table 4. Groundwater Elevation and Product Thickness Data

Plantation Pipe Line Company

Lewis Drive Release, Belton, South Carolina

Site ID #18693 "Kinder Morgan Belton Pipeline Release"

Location ID	Date	Depth to Product (ft BTOC)	Depth to Water (ft BTOC)	Product Thickness (ft)	Top of Casing Elevation ¹ (ft amsl)	Groundwater Elevation (ft amsl)	Corrected ² Groundwater Elevation (ft amsl)
MW-26 (cont'd)	9/6/2016	-	7.13	-		840.43	-
	9/2/2016	-	7.08	-		840.48	-
MW-26B					847.81		
	9/27/2016	-	8.72	-		839.09	-
	9/19/2016	-	8.74	-		839.07	-
	9/12/2016	-	8.80	-		839.01	-
	9/9/2016	-	8.48	-		839.33	-
	9/6/2016	-	8.41	-		839.40	-
	9/2/2016	-	8.33	-		839.48	-
MW-27					854.11		
	9/27/2016	-	27.37	-		826.74	-
	9/19/2016	-	27.28	-		826.83	-
	9/12/2016	-	27.33	-		826.78	-
	9/9/2016	-	27.26	-		826.85	-
	9/6/2016	-	27.18	-		826.93	-
	9/2/2016	-	27.13	-		826.98	-
MW-27B					857.14		
	9/27/2016	-	30.25	-		826.89	-
	9/19/2016	-	30.05	-		827.09	-
	9/12/2016	-	29.90	-		827.24	-
	9/9/2016	-	29.80	-		827.34	-
	9/6/2016	-	29.69	-		827.45	-
	9/2/2016	-	29.64	-		827.50	-
MW-28					844.31		
	9/27/2016	-	23.77	-		820.54	-
	9/19/2016	-	23.72	-		820.59	-
	9/12/2016	-	23.57	-		820.74	-
	9/9/2016	-	23.45	-		820.86	-
	9/6/2016	-	23.34	-		820.97	-
	9/2/2016	-	23.40	-		820.91	-
MW-29					852.20		
	9/27/2016	-	10.25	-		841.95	-
	9/19/2016	-	10.33	-		841.87	-
	9/12/2016	-	10.29	-		841.91	-
	9/9/2016	-	10.24	-		841.96	-
	9/6/2016	-	10.18	-		842.02	-
	9/2/2016	-	10.16	-		842.04	-
MW-30					841.28		
	9/27/2016	-	9.12	-		832.16	-
	9/19/2016	-	9.10	-		832.18	-
	9/12/2016	-	8.57	-		832.71	-
	9/9/2016	-	8.46	-		832.82	-
	9/6/2016	-	8.38	-		832.90	-
	9/2/2016	-	8.30	-		832.98	-
MW-31					845.04		
	9/27/2016	-	20.21	-		824.83	-
	9/19/2016	-	20.10	-		824.94	-
	9/12/2016	-	20.00	-		825.04	-
	9/9/2016	-	19.74	-		825.30	-
	9/6/2016	-	19.65	-		825.39	-

Table 4. Groundwater Elevation and Product Thickness Data

Plantation Pipe Line Company

Lewis Drive Release, Belton, South Carolina

Site ID #18693 "Kinder Morgan Belton Pipeline Release"

Location ID	Date	Depth to Product (ft BTOC)	Depth to Water (ft BTOC)	Product Thickness (ft)	Top of Casing Elevation ¹ (ft amsl)	Groundwater Elevation (ft amsl)	Corrected ² Groundwater Elevation (ft amsl)
MW-31 (cont'd)	9/2/2016	-	19.56	-		825.48	-
MW-31B					844.94		
	9/27/2016	-	19.78	-		825.16	-
	9/19/2016	-	19.65	-		825.29	-
	9/12/2016	-	19.59	-		825.35	-
	9/9/2016	-	19.13	-		825.81	-
	9/6/2016	-	19.03	-		825.91	-
	9/2/2016	-	18.93	-		826.01	-
MW-32					842.93		
	9/27/2016	-	16.21	-		826.72	-
	9/19/2016	-	16.03	-		826.90	-
	9/12/2016	-	15.18	-		827.75	-
	9/9/2016	-	15.10	-		827.83	-
	9/6/2016	-	15.17	-		827.76	-
	9/2/2016	-	15.15	-		827.78	-
MW-33					849.20		
	9/27/2016	-	24.15	-		825.05	-
	9/19/2016	-	23.94	-		825.26	-
	9/12/2016	-	23.81	-		825.39	-
	9/9/2016	-	23.74	-		825.46	-
	9/6/2016	-	23.66	-		825.54	-
	9/2/2016	-	23.78	-		825.42	-
MW-33T					849.11		
	9/27/2016	-	24.78	-		824.33	-
	9/19/2016	-	24.68	-		824.43	-
	9/12/2016	-	24.60	-		824.51	-
	9/9/2016	-	24.48	-		824.63	-
	9/6/2016	-	24.41	-		824.70	-
	9/2/2016	-	24.51	-		824.60	-
MW-35					829.40		
	9/27/2016	-	10.73	-		818.67	-
	9/19/2016	-	10.61	-		818.79	-
	9/12/2016	-	10.50	-		818.90	-
	9/9/2016	-	10.33	-		819.07	-
	9/6/2016	-	10.15	-		819.25	-
	9/2/2016	-	10.12	-		819.28	-
MW-36					858.47		
	9/27/2016	-	18.57	-		839.90	-
	9/19/2016	-	18.48	-		839.99	-
	9/12/2016	-	18.36	-		840.11	-
	9/9/2016	-	18.29	-		840.18	-
	9/6/2016	-	18.24	-		840.23	-
	9/2/2016	-	18.18	-		840.29	-
MW-36B					858.15		
	9/27/2016	-	18.45	-		839.70	-
	9/19/2016	-	18.33	-		839.82	-
	9/12/2016	-	18.25	-		839.90	-
	9/9/2016	-	18.08	-		840.07	-
	9/6/2016	-	17.92	-		840.23	-
	9/2/2016	-	17.86	-		840.29	-

Table 4. Groundwater Elevation and Product Thickness Data
Plantation Pipe Line Company
Lewis Drive Release, Belton, South Carolina
Site ID #18693 "Kinder Morgan Belton Pipeline Release"

Location ID	Date	Depth to Product (ft BTOC)	Depth to Water (ft BTOC)	Product Thickness (ft)	Top of Casing Elevation ¹ (ft amsl)	Groundwater Elevation (ft amsl)	Corrected ² Groundwater Elevation (ft amsl)
RS-01					850.33		
	9/27/2016	16.05	16.22	0.17		834.11	834.24
	9/19/2016	15.90	16.15	0.25		834.18	834.37
	9/12/2016	15.85	16.10	0.25		834.23	834.42
	9/9/2016	15.28	15.37	0.09		834.96	835.03
	9/6/2016	15.20	15.32	0.12		835.01	835.10
	9/2/2016	15.12	15.29	0.17		835.04	835.17
RS-02					850.10		
	9/27/2016	14.83	14.95	0.12		835.15	835.24
	9/19/2016	14.74	14.85	0.11		835.25	835.33
	9/12/2016	14.70	14.90	0.20		835.20	835.35
	9/9/2016	14.14	14.30	0.16		835.80	835.92
	9/6/2016	13.93	14.10	0.17		836.00	836.13
	9/2/2016	13.88	14.01	0.13		836.09	836.19
RS-04					851.44		
	9/27/2016	-	10.30	-		841.14	-
	9/19/2016	-	10.28	-		841.16	-
	9/12/2016	-	10.23	-		841.21	-
	9/9/2016	-	10.15	-		841.29	-
	9/6/2016	-	10.04	-		841.40	-
	9/2/2016	-	10.00	-		841.44	-
RS-05					848.55		
	9/27/2016	14.20	14.36	0.16		834.19	834.30
	9/19/2016	14.13	14.28	0.15		834.27	834.38
	9/12/2016	14.10	14.25	0.15		834.30	834.41
	9/9/2016	13.46	13.77	0.31		834.78	835.00
	9/6/2016	13.39	13.63	0.24		834.92	835.09
	9/2/2016	13.34	13.51	0.17		835.04	835.16
RS-06					850.73		
	9/27/2016	15.46	15.60	0.14		835.13	835.23
	9/19/2016	15.38	15.54	0.16		835.19	835.30
	9/12/2016	15.34	15.50	0.16		835.23	835.34
	9/9/2016	15.15	15.36	0.21		835.37	835.52
	9/6/2016	14.68	14.74	0.06		835.99	836.03
	9/2/2016	14.60	14.68	0.08		836.05	836.10
RS-07					856.04		
	9/27/2016	15.78	16.11	0.33		839.93	840.17
	9/19/2016	15.66	15.84	0.18		840.20	840.33
	9/12/2016	15.35	15.80	0.45		840.24	840.57
	9/9/2016	15.33	15.80	0.47		840.24	840.59
	9/6/2016	15.21	15.48	0.27		840.56	840.76
	9/2/2016	15.15	15.47	0.32		840.57	840.81
RS-08					854.91		
	9/27/2016	15.80	16.85	1.05		838.06	838.82
	9/19/2016	18.65	19.25	0.60		835.66	836.09
	9/12/2016	15.40	15.88	0.48		839.03	839.38
	9/9/2016	15.30	15.75	0.45		839.16	839.48
	9/6/2016	15.08	15.39	0.31		839.52	839.74
	9/2/2016	15.02	15.35	0.33		839.56	839.80
RS-09					849.12		

Table 4. Groundwater Elevation and Product Thickness Data

Plantation Pipe Line Company

Lewis Drive Release, Belton, South Carolina

Site ID #18693 "Kinder Morgan Belton Pipeline Release"

Location ID	Date	Depth to Product (ft BTOC)	Depth to Water (ft BTOC)	Product Thickness (ft)	Top of Casing Elevation ¹ (ft amsl)	Groundwater Elevation (ft amsl)	Corrected ² Groundwater Elevation (ft amsl)
RS-09 (cont'd)	9/27/2016	15.22	15.54	0.32		833.58	833.81
	9/19/2016	15.33	15.37	0.04		833.75	833.78
	9/12/2016	15.28	15.46	0.18		833.66	833.79
	9/9/2016	15.16	15.38	0.22		833.74	833.90
	9/6/2016	15.10	15.31	0.21		833.81	833.96
	9/2/2016	15.05	15.20	0.15		833.92	834.03
RS-10					847.52		
	9/27/2016	13.00	13.40	0.40		834.12	834.42
	9/19/2016	13.03	13.45	0.42		834.07	834.38
	9/12/2016	12.66	12.99	0.33		834.53	834.77
	9/9/2016	12.60	12.93	0.33		834.59	834.83
	9/6/2016	12.30	12.80	0.50		834.72	835.09
9/2/2016	12.23	12.65	0.42		834.87	835.18	
RS-11					848.41		
	9/27/2016	13.40	13.68	0.28		834.73	834.94
	9/19/2016	13.35	13.60	0.25		834.81	834.99
	9/12/2016	-	13.07	-		835.34	-
	9/9/2016	12.90	13.08	0.18		835.33	835.46
	9/6/2016	12.61	12.85	0.24		835.56	835.74
9/2/2016	12.57	12.78	0.21		835.63	835.78	
RS-12					848.87		
	9/27/2016	13.61	13.88	0.27		834.99	835.19
	9/19/2016	13.57	13.81	0.24		835.06	835.24
	9/12/2016	13.53	13.74	0.21		835.13	835.28
	9/9/2016	13.05	13.26	0.21		835.61	835.76
	9/6/2016	12.92	13.15	0.23		835.72	835.89
9/2/2016	12.91	13.13	0.22		835.74	835.90	
RS-13					848.28		
	9/27/2016	15.86	16.08	0.22		832.20	832.36
	9/19/2016	15.76	15.91	0.15		832.37	832.48
	9/12/2016	15.70	15.88	0.18		832.40	832.53
	9/9/2016	15.64	15.78	0.14		832.50	832.60
	9/6/2016	15.55	15.76	0.21		832.52	832.67
9/2/2016	15.59	15.83	0.24		832.45	832.63	
RS-14					846.92		
	9/27/2016	13.34	13.58	0.24		833.34	833.51
	9/19/2016	13.23	13.39	0.16		833.53	833.65
	9/12/2016	13.15	13.33	0.18		833.59	833.72
	9/9/2016	13.05	13.28	0.23		833.64	833.81
	9/6/2016	12.05	12.12	0.07		834.80	834.85
9/2/2016	12.01	12.07	0.06		834.85	834.89	
RS-15					848.97		
	9/27/2016	14.83	15.15	0.32		833.82	834.06
	9/19/2016	14.74	14.81	0.07		834.16	834.21
	9/12/2016	14.66	14.78	0.12		834.19	834.28
	9/9/2016	14.50	14.70	0.20		834.27	834.42
	9/6/2016	13.80	14.10	0.30		834.87	835.09
9/2/2016	12.71	12.83	0.12		836.14	836.23	
RS-16	9/27/2016	-	13.88	-	846.77	832.89	-

Table 4. Groundwater Elevation and Product Thickness Data

Plantation Pipe Line Company

Lewis Drive Release, Belton, South Carolina

Site ID #18693 "Kinder Morgan Belton Pipeline Release"

Location ID	Date	Depth to Product (ft BTOC)	Depth to Water (ft BTOC)	Product Thickness (ft)	Top of Casing Elevation ¹ (ft amsl)	Groundwater Elevation (ft amsl)	Corrected ² Groundwater Elevation (ft amsl)
RS-16 (cont'd)	9/19/2016	-	13.79	-		832.98	-
	9/12/2016	-	13.63	-		833.14	-
	9/9/2016	-	13.54	-		833.23	-
	9/6/2016	-	13.48	-		833.29	-
	9/2/2016	-	13.52	-		833.25	-
RS-17					845.15		
	9/27/2016	10.56	10.69	0.13		834.46	834.56
	9/19/2016	10.48	10.57	0.09		834.58	834.65
	9/12/2016	10.41	10.53	0.12		834.62	834.71
	9/9/2016	10.33	10.49	0.16		834.66	834.78
	9/6/2016	10.25	10.37	0.12		834.78	834.87
RS-18					848.59		
	9/27/2016	14.83	15.20	0.37		833.39	833.66
	9/19/2016	14.76	14.92	0.16		833.67	833.79
	9/12/2016	14.71	14.84	0.13		833.75	833.85
	9/9/2016	14.64	14.77	0.13		833.82	833.92
	9/6/2016	14.58	14.67	0.09		833.92	833.99
RS-19					852.37		
	9/27/2016	13.33	13.53	0.20		838.84	838.98
	9/19/2016	12.94	13.12	0.18		839.25	839.38
	9/12/2016	12.85	13.03	0.18		839.34	839.47
	9/9/2016	12.89	13.03	0.14		839.34	839.44
	9/6/2016	-	11.29	-		841.08	-
RS-20					843.49		
	9/27/2016	-	11.56	-		831.93	-
	9/19/2016	-	11.39	-		832.10	-
	9/12/2016	-	11.81	-		831.68	-
	9/9/2016	-	11.73	-		831.76	-
	9/6/2016	-	11.65	-		831.84	-
RT-1A					856.21		
	9/27/2016	18.65	18.94	0.29		837.27	837.48
	9/19/2016	16.28	16.50	0.22		839.71	839.87
	9/12/2016	17.05	17.24	0.19		838.97	839.11
	9/9/2016	16.93	17.11	0.18		839.10	839.23
	9/6/2016	16.68	16.80	0.12		839.41	839.50
RT-1B					857.30		
	9/27/2016	18.48	18.76	0.28		838.54	838.74
	9/19/2016	18.26	18.50	0.24		838.80	838.97
	9/12/2016	18.03	18.24	0.21		839.06	839.21
	9/9/2016	17.80	18.07	0.27		839.23	839.42
	9/6/2016	17.65	17.88	0.23		839.42	839.58
RT-1C					857.02		
	9/27/2016	17.50	17.78	0.28		839.24	839.44
	9/19/2016	18.44	18.65	0.21		838.37	838.52

Table 4. Groundwater Elevation and Product Thickness Data

Plantation Pipe Line Company

Lewis Drive Release, Belton, South Carolina

Site ID #18693 "Kinder Morgan Belton Pipeline Release"

Location ID	Date	Depth to Product (ft BTOC)	Depth to Water (ft BTOC)	Product Thickness (ft)	Top of Casing Elevation ¹ (ft amsl)	Groundwater Elevation (ft amsl)	Corrected ² Groundwater Elevation (ft amsl)
RT-1C (cont'd)	9/12/2016	18.20	18.39	0.19		838.63	838.77
	9/9/2016	18.07	18.25	0.18		838.77	838.90
	9/6/2016	17.87	17.95	0.08		839.07	839.12
	9/2/2016	17.80	17.95	0.15		839.07	839.18
RT-2A					818.31		
	9/27/2016	14.85	2.46	-		815.85	-
	9/19/2016	-	2.50	-		815.81	-
	9/12/2016	-	2.38	-		815.93	-
	9/9/2016	-	2.35	-		815.96	-
	9/6/2016	-	2.13	-		816.18	-
	9/2/2016	-	2.18	-		816.13	-
RT-2B					818.92		
	9/27/2016	-	2.70	-		816.22	-
	9/19/2016	-	3.12	-		815.80	-
	9/12/2016	-	3.00	-		815.92	-
	9/9/2016	-	2.97	-		815.95	-
	9/6/2016	-	2.80	-		816.12	-
	9/2/2016	-	2.83	-		816.09	-
RT-2C					819.02		
	9/27/2016	-	2.45	-		816.57	-
	9/19/2016	2.80	2.92	0.12		816.10	816.18
	9/12/2016	-	2.72	-		816.30	-
	9/9/2016	-	2.67	-		816.35	-
	9/6/2016	-	2.53	-		816.49	-
	9/2/2016	-	2.56	-		816.46	-
RT-2D					819.57		
	9/27/2016	-	3.25	-		816.32	-
	9/19/2016	-	3.66	-		815.91	-
	9/12/2016	-	3.63	-		815.94	-
	9/9/2016	-	3.55	-		816.02	-
	9/6/2016	-	3.26	-		816.31	-
	9/2/2016	-	3.23	-		816.34	-
RT-2E					819.40		
	9/27/2016	-	3.18	-		816.22	-
	9/19/2016	-	3.30	-		816.10	-
	9/12/2016	-	3.30	-		816.10	-
	9/9/2016	-	3.34	-		816.06	-
	9/6/2016	-	3.37	-		816.03	-
	9/2/2016	-	3.33	-		816.07	-
RT-2F					819.52		
	9/27/2016	-	2.92	-		816.60	-
	9/19/2016	-	3.10	-		816.42	-
	9/12/2016	-	3.28	-		816.24	-
	9/9/2016	-	3.20	-		816.32	-
	9/6/2016	-	3.10	-		816.42	-
	9/2/2016	-	3.12	-		816.40	-
RT-2G					820.31		
	9/27/2016	-	4.60	-		815.71	-
	9/19/2016	-	3.00	-		817.31	-
	9/12/2016	-	2.88	-		817.43	-

Table 4. Groundwater Elevation and Product Thickness Data

Plantation Pipe Line Company

Lewis Drive Release, Belton, South Carolina

Site ID #18693 "Kinder Morgan Belton Pipeline Release"

Location ID	Date	Depth to Product (ft BTOC)	Depth to Water (ft BTOC)	Product Thickness (ft)	Top of Casing Elevation ¹ (ft amsl)	Groundwater Elevation (ft amsl)	Corrected ² Groundwater Elevation (ft amsl)
RT-2G (cont'd)	9/9/2016	-	2.90	-		817.41	-
	9/6/2016	-	2.74	-		817.57	-
	9/2/2016	-	2.71	-		817.60	-
RT-2H					822.17		
	9/27/2016	-	3.20	-		818.97	-
	9/19/2016	-	3.03	-		819.14	-
	9/12/2016	-	4.79	-		817.38	-
	9/9/2016	-	4.76	-		817.41	-
	9/6/2016	-	4.50	-		817.67	-
RT-2I					819.51		
	9/27/2016	-	2.10	-		817.41	-
	9/19/2016	-	2.05	-		817.46	-
	9/12/2016	-	2.74	-		816.77	-
	9/9/2016	-	2.69	-		816.82	-
	9/6/2016	-	2.62	-		816.89	-
RT-2J					818.38		
	9/27/2016	1.90	2.00	0.10		816.38	816.46
	9/19/2016	-	1.25	-		817.13	-
	9/12/2016	-	2.02	-		816.36	-
	9/9/2016	-	1.88	-		816.50	-
	9/6/2016	-	1.73	-		816.65	-
RT-2K					817.46		
	9/27/2016	-	1.19	-		816.27	-
	9/19/2016	-	NM	-		-	-
	9/12/2016	-	NM	-		-	-
	9/9/2016	-	1.04	-		816.42	-
	9/6/2016	-	1.10	-		816.36	-
RT-2L					820.38		
	9/27/2016	3.82	4.07	0.25		816.31	816.49
	9/19/2016	3.80	4.10	0.30		816.28	816.50
	9/12/2016	3.69	3.94	0.25		816.44	816.62
	9/9/2016	3.70	3.95	0.25		816.43	816.61
	9/6/2016	3.50	3.84	0.34		816.54	816.79
RW-01					851.92		
	9/27/2016	-	18.88	-		833.04	-
	9/19/2016	-	18.03	-		833.89	-
	9/12/2016	-	17.96	-		833.96	-
	9/9/2016	-	12.18	-		839.74	-
	9/6/2016	-	16.90	-		835.02	-
RW-02					852.69		
	9/27/2016	24.02	24.36	0.34		828.33	828.58
	9/19/2016	23.90	24.30	0.40		828.39	828.68
	9/12/2016	23.60	23.96	0.36		828.73	828.99
	9/9/2016	23.46	23.78	0.32		828.91	829.14

Table 4. Groundwater Elevation and Product Thickness Data
 Plantation Pipe Line Company
 Lewis Drive Release, Belton, South Carolina
 Site ID #18693 "Kinder Morgan Belton Pipeline Release"

Location ID	Date	Depth to Product (ft BTOC)	Depth to Water (ft BTOC)	Product Thickness (ft)	Top of Casing Elevation ¹ (ft amsl)	Groundwater Elevation (ft amsl)	Corrected ² Groundwater Elevation (ft amsl)
RW-02 (cont'd)	9/6/2016	23.56	23.73	0.17		828.96	829.08
	9/2/2016	23.51	23.68	0.17		829.01	829.13
RW-03					852.34		
	9/27/2016	24.30	24.52	0.22		827.82	827.98
	9/19/2016	23.84	24.26	0.42		828.08	828.39
	9/12/2016	23.69	23.93	0.24		828.41	828.58
	9/9/2016	23.58	23.79	0.21		828.55	828.70
	9/6/2016	23.21	23.46	0.25		828.88	829.06
	9/2/2016	23.16	23.38	0.22		828.96	829.12
RW-04					853.93		
	9/27/2016	29.80	30.23	0.43		823.70	824.02
	9/19/2016	29.46	29.80	0.34		824.13	824.38
	9/12/2016	29.13	29.60	0.47		824.33	824.68
	9/9/2016	29.05	29.40	0.35		824.53	824.79
	9/6/2016	28.40	29.35	0.95		824.58	825.28
RW-05					853.53		
	9/27/2016	33.30	35.15	1.85		818.38	819.73
	9/19/2016	33.08	34.70	1.62		818.83	820.02
	9/12/2016	33.20	33.32	0.12		820.21	820.30
	9/9/2016	33.10	33.18	0.08		820.35	820.41
	9/6/2016	32.94	33.24	0.30		820.29	820.51
RW-06					846.21		
	9/27/2016	27.45	28.42	0.97		817.79	818.50
	9/19/2016	27.20	28.14	0.94		818.07	818.75
	9/12/2016	27.03	27.80	0.77		818.41	818.97
	9/9/2016	26.91	27.70	0.79		818.51	819.09
	9/6/2016	26.95	27.48	0.53		818.73	819.12
RW-07					843.19		
	9/27/2016	23.85	25.25	1.40		817.94	818.96
	9/19/2016	23.65	24.86	1.21		818.33	819.22
	9/12/2016	23.40	24.75	1.35		818.44	819.43
	9/9/2016	23.30	24.64	1.34		818.55	819.53
	9/6/2016	23.16	24.54	1.38		818.65	819.66
RW-08					835.48		
	9/27/2016	17.08	18.48	1.40		817.00	818.02
	9/19/2016	16.87	18.25	1.38		817.23	818.24
	9/12/2016	16.81	17.53	0.72		817.95	818.47
	9/9/2016	16.73	17.24	0.51		818.24	818.61
	9/6/2016	16.65	17.15	0.50		818.33	818.69
RW-09					835.12		
	9/27/2016	14.40	16.45	2.05		818.67	820.17
	9/19/2016	14.29	15.40	1.11		819.72	820.53
	9/12/2016	13.97	15.18	1.21		819.94	820.83
	9/9/2016	13.86	15.08	1.22		820.04	820.93
9/6/2016	13.75	14.89	1.14		820.23	821.07	

Table 4. Groundwater Elevation and Product Thickness Data
Plantation Pipe Line Company
Lewis Drive Release, Belton, South Carolina
Site ID #18693 "Kinder Morgan Belton Pipeline Release"

Location ID	Date	Depth to Product (ft BTOC)	Depth to Water (ft BTOC)	Product Thickness (ft)	Top of Casing Elevation ¹ (ft amsl)	Groundwater Elevation (ft amsl)	Corrected ² Groundwater Elevation (ft amsl)
RW-09 (cont'd)	9/2/2016	13.60	14.70	1.10		820.42	821.23
RW-10					848.53		
	9/27/2016	16.05	16.52	0.47		832.01	832.36
	9/19/2016	15.61	16.00	0.39		832.53	832.82
	9/12/2016	15.40	15.73	0.33		832.80	833.04
	9/9/2016	15.30	15.55	0.25		832.98	833.17
	9/6/2016	15.08	15.60	0.52		832.93	833.31
	9/2/2016	14.70	15.75	1.05		832.78	833.55
RW-11					852.97		
	9/27/2016	13.43	15.80	2.37		837.17	838.90
	9/19/2016	13.21	15.44	2.23		837.53	839.16
	9/12/2016	13.03	15.10	2.07		837.87	839.38
	9/9/2016	12.90	14.95	2.05		838.02	839.51
	9/6/2016	12.85	14.75	1.90		838.22	839.60
	9/2/2016	12.85	14.03	1.18		838.94	839.80
RW-12					852.75		
	9/27/2016	-	NM	-		-	-
	9/19/2016	-	14.81	-		837.94	-
	9/12/2016	-	14.71	-		838.04	-
	9/9/2016	-	14.58	-		838.17	-
	9/6/2016	-	14.50	-		838.25	-
	9/2/2016	-	14.40	-		838.35	-
RW-13					847.97		
	9/27/2016	15.25	17.23	1.98		830.74	832.18
	9/19/2016	14.95	16.58	1.63		831.39	832.58
	9/12/2016	14.80	16.20	1.40		831.77	832.79
	9/9/2016	14.65	16.13	1.48		831.84	832.92
	9/6/2016	14.44	16.26	1.82		831.71	833.04
	9/2/2016	14.20	15.90	1.70		832.07	833.31
RW-14					827.54		
	9/27/2016	12.10	12.20	0.10		815.34	815.41
	9/19/2016	12.10	12.20	0.10		815.34	815.41
	9/12/2016	11.91	12.05	0.14		815.49	815.59
	9/9/2016	11.90	12.00	0.10		815.54	815.61
	9/6/2016	13.68	13.77	0.09		813.77	813.84
	9/2/2016	13.65	13.73	0.08		813.81	813.87
RW-15					851.64		
	9/27/2016	-	15.12	-		836.52	-
	9/19/2016	-	14.94	-		836.70	-
	9/12/2016	-	14.76	-		836.88	-
	9/9/2016	-	14.70	-		836.94	-
	9/6/2016	-	14.44	-		837.20	-
	9/2/2016	-	14.50	-		837.14	-
SW-01					812.82		
	9/29/2016	-	(0.30)	-		813.12	-
SW-02					808.65		
	9/29/2016	-	(1.15)	-		809.80	-
SW-03					815.09		
	9/29/2016	-	(0.20)	-		815.29	-
SW-05					838.75		

Table 4. Groundwater Elevation and Product Thickness Data

Plantation Pipe Line Company

Lewis Drive Release, Belton, South Carolina

Site ID #18693 "Kinder Morgan Belton Pipeline Release"

Location ID	Date	Depth to Product (ft BTOC)	Depth to Water (ft BTOC)	Product Thickness (ft)	Top of Casing Elevation ¹ (ft amsl)	Groundwater Elevation (ft amsl)	Corrected ² Groundwater Elevation (ft amsl)
SW-05 (cont'd)	9/29/2016	-	DRY	-		-	-
SW-08	9/29/2016	-	(0.90)	-	802.04	802.94	-
SW-10	9/29/2016	-	(0.28)	-	778.09	778.37	-
TW-04R	9/9/2016	-	DRY	-	852.64	-	-
TW-05R	9/9/2016	-	DRY	-	849.93	-	-
TW-14R	9/9/2016	-	DRY	-	853.37	-	-
TW-15R	9/9/2016	-	DRY	-	850.62	-	-
TW-21	9/9/2016	-	7.60	-	849.70	842.10	-
TW-28	9/9/2016	20.34	20.68	0.34	851.42	830.74	830.99
TW-30	9/9/2016	-	19.85	-	851.81	831.96	-
TW-34	9/9/2016	-	22.36	-	854.79	832.43	-
TW-35	9/9/2016	-	22.80	-	854.10	831.30	-
TW-40	9/9/2016	-	28.32	-	853.35	825.03	-
TW-41	9/9/2016	-	29.77	-	849.38	819.61	-
TW-42	9/9/2016	26.08	27.20	1.12	846.84	819.64	820.46
TW-45	9/9/2016	26.20	26.47	0.27	848.31	821.84	822.04
TW-46	9/9/2016	-	26.20	-	846.88	820.68	-
TW-55	9/9/2016	-	11.57	-	845.93	834.36	-
TW-59	9/9/2016	-	14.89	-	834.78	819.89	-
TW-60	9/9/2016	-	10.56	-	828.03	817.47	-
TW-64	9/9/2016	-	16.12	-	845.88	829.76	-
TW-65	9/9/2016	-	18.42	-	845.62	827.20	-
TW-66	9/9/2016	-	2.30	-	820.31	818.01	-
TW-67	9/9/2016	-	13.05	-	852.71	839.66	-
TW-68	9/9/2016	-	20.05	-	846.45	826.40	-
TW-69					840.27		

Table 4. Groundwater Elevation and Product Thickness Data

Plantation Pipe Line Company

Lewis Drive Release, Belton, South Carolina

Site ID #18693 "Kinder Morgan Belton Pipeline Release"

Location ID	Date	Depth to Product (ft BTOC)	Depth to Water (ft BTOC)	Product Thickness (ft)	Top of Casing Elevation ¹ (ft amsl)	Groundwater Elevation (ft amsl)	Corrected ² Groundwater Elevation (ft amsl)
TW-69 (cont'd)	9/9/2016	-	14.29	-		825.98	-
TW-70	9/9/2016	-	16.03	-	841.95	825.92	-
TW-73	9/9/2016	-	11.10	-	850.53	839.43	-
TW-76	9/9/2016	-	14.30	-	852.44	838.14	-
TW-81	9/9/2016	-	DRY	-	849.43	-	-
TW-82	9/9/2016	-	8.13	-	849.64	841.51	-
TW-83	9/9/2016	-	9.38	-	850.44	841.06	-
TW-84	9/9/2016	10.56	11.93	1.37	851.22	839.29	840.29
TW-85	9/9/2016	-	14.22	-	843.49	829.27	-
TW-86	9/9/2016	-	5.54	-	853.10	847.56	-
TW-87	9/9/2016	-	DRY	-	852.25	-	-
TW-90	9/9/2016	-	13.05	-	845.43	832.38	-
TW-94	9/9/2016	10.05	10.70	0.65	840.58	829.88	830.36
TW-96	9/9/2016	-	10.60	-	840.40	829.80	-

¹ Elevation of zero mark (ft amsl) for surface water staff gauges

² Calculated based on an oil:water density ratio of 0.73

amsl = above mean sea level

BTOC = below top of casing

ft = feet

NM = not measured

NS = elevation not yet surveyed

October 05, 2016

Bill Waldron
CH2M HILL
1717 Arch St
Suite 4400
Glenside, PA 19038

RE: Project: KINDERMORGAN-LEWIS DRIVE, SC
Pace Project No.: 92314319

Dear Bill Waldron:

Enclosed are the analytical results for sample(s) received by the laboratory on September 30, 2016. The results relate only to the samples included in this report. Results reported herein conform to the most current, applicable TNI/NELAC standards and the laboratory's Quality Assurance Manual, where applicable, unless otherwise noted in the body of the report.

If you have any questions concerning this report, please feel free to contact me.

Sincerely,



Kevin Godwin
kevin.godwin@pacelabs.com
Project Manager

Enclosures

cc: Bethany Garvey, CH2M HILL
Scott Powell, CH2M
Tom Wiley, CH2M



REPORT OF LABORATORY ANALYSIS

This report shall not be reproduced, except in full,
without the written consent of Pace Analytical Services, LLC.

CERTIFICATIONS

Project: KINDERMORGAN-LEWIS DRIVE, SC
Pace Project No.: 92314319

Charlotte Certification IDs

9800 Kinsey Ave. Ste 100, Huntersville, NC 28078
North Carolina Drinking Water Certification #: 37706
North Carolina Field Services Certification #: 5342
North Carolina Wastewater Certification #: 12

South Carolina Certification #: 99006001
Florida/NELAP Certification #: E87627
Kentucky UST Certification #: 84
Virginia/VELAP Certification #: 460221

REPORT OF LABORATORY ANALYSIS

This report shall not be reproduced, except in full,
without the written consent of Pace Analytical Services, LLC.

SAMPLE ANALYTE COUNT

Project: KINDERMORGAN-LEWIS DRIVE, SC
Pace Project No.: 92314319

Lab ID	Sample ID	Method	Analysts	Analytes Reported	Laboratory
92314319001	SW11-092916	EPA 8260	GAW	10	PASI-C
92314319002	SW10-092916	EPA 8260	GAW	10	PASI-C
92314319003	FP01-092916	EPA 8260	GAW	10	PASI-C
92314319004	FP02-092916	EPA 8260	GAW	10	PASI-C
92314319005	FP03-092916	EPA 8260	GAW	10	PASI-C
92314319006	SW09-092916	EPA 8260	GAW	10	PASI-C
92314319007	SW08-092916	EPA 8260	GAW	10	PASI-C
92314319008	SW13-092916	EPA 8260	GAW	10	PASI-C
92314319009	SW02-092916	EPA 8260	GAW	10	PASI-C
92314319010	SW04-092916	EPA 8260	GAW	10	PASI-C
92314319011	SW01-092916	EPA 8260	GAW	10	PASI-C
92314319012	SW12-092916	EPA 8260	GAW	10	PASI-C
92314319013	TB-092916	EPA 8260	GAW	10	PASI-C
92314319015	SW03-092916	EPA 8260	GAW	10	PASI-C

REPORT OF LABORATORY ANALYSIS

This report shall not be reproduced, except in full,
without the written consent of Pace Analytical Services, LLC.

ANALYTICAL RESULTS

Project: KINDERMORGAN-LEWIS DRIVE, SC
Pace Project No.: 92314319

Parameters	Results	Units	Report Limit	DF	Prepared	Analyzed	CAS No.	Qual
Sample: SW11-092916								
Lab ID: 92314319001								
Collected: 09/29/16 09:15 Received: 09/30/16 10:20 Matrix: Water								
8260 MSV Low Level SC								
Analytical Method: EPA 8260								
Benzene	ND	ug/L	1.0	1		10/01/16 21:00	71-43-2	
Ethylbenzene	ND	ug/L	1.0	1		10/01/16 21:00	100-41-4	
Naphthalene	ND	ug/L	1.0	1		10/01/16 21:00	91-20-3	
Toluene	ND	ug/L	1.0	1		10/01/16 21:00	108-88-3	
Xylene (Total)	ND	ug/L	1.0	1		10/01/16 21:00	1330-20-7	
m&p-Xylene	ND	ug/L	2.0	1		10/01/16 21:00	179601-23-1	
o-Xylene	ND	ug/L	1.0	1		10/01/16 21:00	95-47-6	
Surrogates								
4-Bromofluorobenzene (S)	98	%	70-130	1		10/01/16 21:00	460-00-4	
1,2-Dichloroethane-d4 (S)	95	%	70-130	1		10/01/16 21:00	17060-07-0	
Toluene-d8 (S)	104	%	70-130	1		10/01/16 21:00	2037-26-5	

REPORT OF LABORATORY ANALYSIS

This report shall not be reproduced, except in full,
without the written consent of Pace Analytical Services, LLC.

ANALYTICAL RESULTS

Project: KINDERMORGAN-LEWIS DRIVE, SC
Pace Project No.: 92314319

Sample: SW10-092916 Lab ID: 92314319002 Collected: 09/29/16 09:30 Received: 09/30/16 10:20 Matrix: Water

Parameters	Results	Units	Report Limit	DF	Prepared	Analyzed	CAS No.	Qual
8260 MSV Low Level SC		Analytical Method: EPA 8260						
Benzene	ND	ug/L	1.0	1		10/01/16 21:18	71-43-2	
Ethylbenzene	ND	ug/L	1.0	1		10/01/16 21:18	100-41-4	
Naphthalene	ND	ug/L	1.0	1		10/01/16 21:18	91-20-3	
Toluene	ND	ug/L	1.0	1		10/01/16 21:18	108-88-3	
Xylene (Total)	ND	ug/L	1.0	1		10/01/16 21:18	1330-20-7	
m&p-Xylene	ND	ug/L	2.0	1		10/01/16 21:18	179601-23-1	
o-Xylene	ND	ug/L	1.0	1		10/01/16 21:18	95-47-6	
Surrogates								
4-Bromofluorobenzene (S)	97	%	70-130	1		10/01/16 21:18	460-00-4	
1,2-Dichloroethane-d4 (S)	94	%	70-130	1		10/01/16 21:18	17060-07-0	
Toluene-d8 (S)	105	%	70-130	1		10/01/16 21:18	2037-26-5	

REPORT OF LABORATORY ANALYSIS

This report shall not be reproduced, except in full,
without the written consent of Pace Analytical Services, LLC.

ANALYTICAL RESULTS

Project: KINDERMORGAN-LEWIS DRIVE, SC
Pace Project No.: 92314319

Sample: FP01-092916 Lab ID: 92314319003 Collected: 09/29/16 09:50 Received: 09/30/16 10:20 Matrix: Water

Parameters	Results	Units	Report Limit	DF	Prepared	Analyzed	CAS No.	Qual
8260 MSV Low Level SC		Analytical Method: EPA 8260						
Benzene	ND	ug/L	1.0	1		10/01/16 21:35	71-43-2	
Ethylbenzene	ND	ug/L	1.0	1		10/01/16 21:35	100-41-4	
Naphthalene	ND	ug/L	1.0	1		10/01/16 21:35	91-20-3	
Toluene	ND	ug/L	1.0	1		10/01/16 21:35	108-88-3	
Xylene (Total)	ND	ug/L	1.0	1		10/01/16 21:35	1330-20-7	
m&p-Xylene	ND	ug/L	2.0	1		10/01/16 21:35	179601-23-1	
o-Xylene	ND	ug/L	1.0	1		10/01/16 21:35	95-47-6	
Surrogates								
4-Bromofluorobenzene (S)	95	%	70-130	1		10/01/16 21:35	460-00-4	
1,2-Dichloroethane-d4 (S)	91	%	70-130	1		10/01/16 21:35	17060-07-0	
Toluene-d8 (S)	104	%	70-130	1		10/01/16 21:35	2037-26-5	

REPORT OF LABORATORY ANALYSIS

This report shall not be reproduced, except in full,
without the written consent of Pace Analytical Services, LLC.

ANALYTICAL RESULTS

Project: KINDERMORGAN-LEWIS DRIVE, SC
Pace Project No.: 92314319

Sample: FP02-092916	Lab ID: 92314319004	Collected: 09/29/16 09:55	Received: 09/30/16 10:20	Matrix: Water				
Parameters	Results	Units	Report Limit	DF	Prepared	Analyzed	CAS No.	Qual
8260 MSV Low Level SC	Analytical Method: EPA 8260							
Benzene	ND	ug/L	1.0	1		10/01/16 21:52	71-43-2	
Ethylbenzene	ND	ug/L	1.0	1		10/01/16 21:52	100-41-4	
Naphthalene	ND	ug/L	1.0	1		10/01/16 21:52	91-20-3	
Toluene	ND	ug/L	1.0	1		10/01/16 21:52	108-88-3	
Xylene (Total)	ND	ug/L	1.0	1		10/01/16 21:52	1330-20-7	
m&p-Xylene	ND	ug/L	2.0	1		10/01/16 21:52	179601-23-1	
o-Xylene	ND	ug/L	1.0	1		10/01/16 21:52	95-47-6	
Surrogates								
4-Bromofluorobenzene (S)	95	%	70-130	1		10/01/16 21:52	460-00-4	
1,2-Dichloroethane-d4 (S)	93	%	70-130	1		10/01/16 21:52	17060-07-0	
Toluene-d8 (S)	103	%	70-130	1		10/01/16 21:52	2037-26-5	

REPORT OF LABORATORY ANALYSIS

This report shall not be reproduced, except in full,
without the written consent of Pace Analytical Services, LLC.

ANALYTICAL RESULTS

Project: KINDERMORGAN-LEWIS DRIVE, SC
Pace Project No.: 92314319

Sample: FP03-092916	Lab ID: 92314319005	Collected: 09/29/16 09:40	Received: 09/30/16 10:20	Matrix: Water				
Parameters	Results	Units	Report Limit	DF	Prepared	Analyzed	CAS No.	Qual
8260 MSV Low Level SC	Analytical Method: EPA 8260							
Benzene	ND	ug/L	1.0	1		10/04/16 21:43	71-43-2	
Ethylbenzene	ND	ug/L	1.0	1		10/04/16 21:43	100-41-4	
Naphthalene	ND	ug/L	1.0	1		10/04/16 21:43	91-20-3	
Toluene	ND	ug/L	1.0	1		10/04/16 21:43	108-88-3	
Xylene (Total)	ND	ug/L	1.0	1		10/04/16 21:43	1330-20-7	
m&p-Xylene	ND	ug/L	2.0	1		10/04/16 21:43	179601-23-1	
o-Xylene	ND	ug/L	1.0	1		10/04/16 21:43	95-47-6	
Surrogates								
4-Bromofluorobenzene (S)	92	%	70-130	1		10/04/16 21:43	460-00-4	
1,2-Dichloroethane-d4 (S)	95	%	70-130	1		10/04/16 21:43	17060-07-0	
Toluene-d8 (S)	104	%	70-130	1		10/04/16 21:43	2037-26-5	

REPORT OF LABORATORY ANALYSIS

This report shall not be reproduced, except in full,
without the written consent of Pace Analytical Services, LLC.

ANALYTICAL RESULTS

Project: KINDERMORGAN-LEWIS DRIVE, SC
Pace Project No.: 92314319

Sample: SW09-092916 Lab ID: 92314319006 Collected: 09/29/16 10:05 Received: 09/30/16 10:20 Matrix: Water

Parameters	Results	Units	Report Limit	DF	Prepared	Analyzed	CAS No.	Qual
8260 MSV Low Level SC		Analytical Method: EPA 8260						
Benzene	ND	ug/L	1.0	1		10/01/16 22:09	71-43-2	
Ethylbenzene	ND	ug/L	1.0	1		10/01/16 22:09	100-41-4	
Naphthalene	ND	ug/L	1.0	1		10/01/16 22:09	91-20-3	
Toluene	ND	ug/L	1.0	1		10/01/16 22:09	108-88-3	
Xylene (Total)	ND	ug/L	1.0	1		10/01/16 22:09	1330-20-7	
m&p-Xylene	ND	ug/L	2.0	1		10/01/16 22:09	179601-23-1	
o-Xylene	ND	ug/L	1.0	1		10/01/16 22:09	95-47-6	
Surrogates								
4-Bromofluorobenzene (S)	96	%	70-130	1		10/01/16 22:09	460-00-4	
1,2-Dichloroethane-d4 (S)	95	%	70-130	1		10/01/16 22:09	17060-07-0	
Toluene-d8 (S)	103	%	70-130	1		10/01/16 22:09	2037-26-5	

REPORT OF LABORATORY ANALYSIS

This report shall not be reproduced, except in full,
without the written consent of Pace Analytical Services, LLC.

ANALYTICAL RESULTS

Project: KINDERMORGAN-LEWIS DRIVE, SC
Pace Project No.: 92314319

Sample: SW08-092916 Lab ID: 92314319007 Collected: 09/29/16 10:10 Received: 09/30/16 10:20 Matrix: Water

Parameters	Results	Units	Report Limit	DF	Prepared	Analyzed	CAS No.	Qual
8260 MSV Low Level SC								
Analytical Method: EPA 8260								
Benzene	ND	ug/L	1.0	1		10/01/16 22:26	71-43-2	
Ethylbenzene	ND	ug/L	1.0	1		10/01/16 22:26	100-41-4	
Naphthalene	ND	ug/L	1.0	1		10/01/16 22:26	91-20-3	
Toluene	ND	ug/L	1.0	1		10/01/16 22:26	108-88-3	
Xylene (Total)	ND	ug/L	1.0	1		10/01/16 22:26	1330-20-7	
m&p-Xylene	ND	ug/L	2.0	1		10/01/16 22:26	179601-23-1	
o-Xylene	ND	ug/L	1.0	1		10/01/16 22:26	95-47-6	
Surrogates								
4-Bromofluorobenzene (S)	92	%	70-130	1		10/01/16 22:26	460-00-4	
1,2-Dichloroethane-d4 (S)	100	%	70-130	1		10/01/16 22:26	17060-07-0	
Toluene-d8 (S)	105	%	70-130	1		10/01/16 22:26	2037-26-5	

REPORT OF LABORATORY ANALYSIS

This report shall not be reproduced, except in full,
without the written consent of Pace Analytical Services, LLC.

ANALYTICAL RESULTS

Project: KINDERMORGAN-LEWIS DRIVE, SC
Pace Project No.: 92314319

Sample: SW13-092916	Lab ID: 92314319008	Collected: 09/29/16 10:20	Received: 09/30/16 10:20	Matrix: Water				
Parameters	Results	Units	Report Limit	DF	Prepared	Analyzed	CAS No.	Qual
8260 MSV Low Level SC	Analytical Method: EPA 8260							
Benzene	ND	ug/L	1.0	1		10/01/16 22:43	71-43-2	
Ethylbenzene	ND	ug/L	1.0	1		10/01/16 22:43	100-41-4	
Naphthalene	ND	ug/L	1.0	1		10/01/16 22:43	91-20-3	
Toluene	ND	ug/L	1.0	1		10/01/16 22:43	108-88-3	
Xylene (Total)	ND	ug/L	1.0	1		10/01/16 22:43	1330-20-7	
m&p-Xylene	ND	ug/L	2.0	1		10/01/16 22:43	179601-23-1	
o-Xylene	ND	ug/L	1.0	1		10/01/16 22:43	95-47-6	
Surrogates								
4-Bromofluorobenzene (S)	96	%	70-130	1		10/01/16 22:43	460-00-4	
1,2-Dichloroethane-d4 (S)	95	%	70-130	1		10/01/16 22:43	17060-07-0	
Toluene-d8 (S)	104	%	70-130	1		10/01/16 22:43	2037-26-5	

REPORT OF LABORATORY ANALYSIS

This report shall not be reproduced, except in full,
without the written consent of Pace Analytical Services, LLC.

ANALYTICAL RESULTS

Project: KINDERMORGAN-LEWIS DRIVE, SC
Pace Project No.: 92314319

Sample: SW02-092916 Lab ID: 92314319009 Collected: 09/29/16 10:40 Received: 09/30/16 10:20 Matrix: Water

Parameters	Results	Units	Report Limit	DF	Prepared	Analyzed	CAS No.	Qual
8260 MSV Low Level SC		Analytical Method: EPA 8260						
Benzene	ND	ug/L	1.0	1		10/04/16 22:00	71-43-2	
Ethylbenzene	ND	ug/L	1.0	1		10/04/16 22:00	100-41-4	
Naphthalene	ND	ug/L	1.0	1		10/04/16 22:00	91-20-3	
Toluene	ND	ug/L	1.0	1		10/04/16 22:00	108-88-3	
Xylene (Total)	ND	ug/L	1.0	1		10/04/16 22:00	1330-20-7	
m&p-Xylene	ND	ug/L	2.0	1		10/04/16 22:00	179601-23-1	
o-Xylene	ND	ug/L	1.0	1		10/04/16 22:00	95-47-6	
Surrogates								
4-Bromofluorobenzene (S)	94	%	70-130	1		10/04/16 22:00	460-00-4	
1,2-Dichloroethane-d4 (S)	93	%	70-130	1		10/04/16 22:00	17060-07-0	
Toluene-d8 (S)	117	%	70-130	1		10/04/16 22:00	2037-26-5	

REPORT OF LABORATORY ANALYSIS

This report shall not be reproduced, except in full,
without the written consent of Pace Analytical Services, LLC.

ANALYTICAL RESULTS

Project: KINDERMORGAN-LEWIS DRIVE, SC
Pace Project No.: 92314319

Sample: SW04-092916 Lab ID: 92314319010 Collected: 09/29/16 10:30 Received: 09/30/16 10:20 Matrix: Water

Parameters	Results	Units	Report Limit	DF	Prepared	Analyzed	CAS No.	Qual
8260 MSV Low Level SC								
Analytical Method: EPA 8260								
Benzene	ND	ug/L	1.0	1		10/04/16 22:17	71-43-2	
Ethylbenzene	ND	ug/L	1.0	1		10/04/16 22:17	100-41-4	
Naphthalene	ND	ug/L	1.0	1		10/04/16 22:17	91-20-3	
Toluene	ND	ug/L	1.0	1		10/04/16 22:17	108-88-3	
Xylene (Total)	ND	ug/L	1.0	1		10/04/16 22:17	1330-20-7	
m&p-Xylene	ND	ug/L	2.0	1		10/04/16 22:17	179601-23-1	
o-Xylene	ND	ug/L	1.0	1		10/04/16 22:17	95-47-6	
Surrogates								
4-Bromofluorobenzene (S)	98	%	70-130	1		10/04/16 22:17	460-00-4	
1,2-Dichloroethane-d4 (S)	99	%	70-130	1		10/04/16 22:17	17060-07-0	
Toluene-d8 (S)	107	%	70-130	1		10/04/16 22:17	2037-26-5	

REPORT OF LABORATORY ANALYSIS

This report shall not be reproduced, except in full,
without the written consent of Pace Analytical Services, LLC.

ANALYTICAL RESULTS

Project: KINDERMORGAN-LEWIS DRIVE, SC
Pace Project No.: 92314319

Parameters	Results	Units	Report Limit	DF	Prepared	Analyzed	CAS No.	Qual
Sample: SW01-092916								
Lab ID: 92314319011 Collected: 09/29/16 11:05 Received: 09/30/16 10:20 Matrix: Water								
Analytical Method: EPA 8260								
8260 MSV Low Level SC								
Benzene	ND	ug/L	1.0	1		10/04/16 21:08	71-43-2	
Ethylbenzene	ND	ug/L	1.0	1		10/04/16 21:08	100-41-4	
Naphthalene	ND	ug/L	1.0	1		10/04/16 21:08	91-20-3	
Toluene	ND	ug/L	1.0	1		10/04/16 21:08	108-88-3	
Xylene (Total)	ND	ug/L	1.0	1		10/04/16 21:08	1330-20-7	
m&p-Xylene	ND	ug/L	2.0	1		10/04/16 21:08	179601-23-1	
o-Xylene	ND	ug/L	1.0	1		10/04/16 21:08	95-47-6	
Surrogates								
4-Bromofluorobenzene (S)	90	%	70-130	1		10/04/16 21:08	460-00-4	
1,2-Dichloroethane-d4 (S)	89	%	70-130	1		10/04/16 21:08	17060-07-0	
Toluene-d8 (S)	117	%	70-130	1		10/04/16 21:08	2037-26-5	

REPORT OF LABORATORY ANALYSIS

This report shall not be reproduced, except in full,
without the written consent of Pace Analytical Services, LLC.

ANALYTICAL RESULTS

Project: KINDERMORGAN-LEWIS DRIVE, SC
Pace Project No.: 92314319

Sample: SW12-092916	Lab ID: 92314319012	Collected: 09/29/16 11:20	Received: 09/30/16 10:20	Matrix: Water				
Parameters	Results	Units	Report Limit	DF	Prepared	Analyzed	CAS No.	Qual
8260 MSV Low Level SC								
Analytical Method: EPA 8260								
Benzene	7850	ug/L	100	100		10/05/16 00:00	71-43-2	
Ethylbenzene	1030	ug/L	100	100		10/05/16 00:00	100-41-4	
Naphthalene	143	ug/L	100	100		10/05/16 00:00	91-20-3	
Toluene	19000	ug/L	100	100		10/05/16 00:00	108-88-3	
Xylene (Total)	5860	ug/L	100	100		10/05/16 00:00	1330-20-7	
m&p-Xylene	3910	ug/L	200	100		10/05/16 00:00	179601-23-1	
o-Xylene	1940	ug/L	100	100		10/05/16 00:00	95-47-6	
Surrogates								
4-Bromofluorobenzene (S)	101	%	70-130	100		10/05/16 00:00	460-00-4	
1,2-Dichloroethane-d4 (S)	94	%	70-130	100		10/05/16 00:00	17060-07-0	
Toluene-d8 (S)	102	%	70-130	100		10/05/16 00:00	2037-26-5	

REPORT OF LABORATORY ANALYSIS

This report shall not be reproduced, except in full,
without the written consent of Pace Analytical Services, LLC.

ANALYTICAL RESULTS

Project: KINDERMORGAN-LEWIS DRIVE, SC
Pace Project No.: 92314319

Sample: TB-092916 Lab ID: 92314319013 Collected: 09/29/16 00:00 Received: 09/30/16 10:20 Matrix: Water

Parameters	Results	Units	Report Limit	DF	Prepared	Analyzed	CAS No.	Qual
8260 MSV Low Level SC		Analytical Method: EPA 8260						
Benzene	ND	ug/L	1.0	1		10/01/16 18:27	71-43-2	
Ethylbenzene	ND	ug/L	1.0	1		10/01/16 18:27	100-41-4	
Naphthalene	ND	ug/L	1.0	1		10/01/16 18:27	91-20-3	
Toluene	ND	ug/L	1.0	1		10/01/16 18:27	108-88-3	
Xylene (Total)	ND	ug/L	1.0	1		10/01/16 18:27	1330-20-7	
m&p-Xylene	ND	ug/L	2.0	1		10/01/16 18:27	179601-23-1	
o-Xylene	ND	ug/L	1.0	1		10/01/16 18:27	95-47-6	
Surrogates								
4-Bromofluorobenzene (S)	93	%	70-130	1		10/01/16 18:27	460-00-4	
1,2-Dichloroethane-d4 (S)	97	%	70-130	1		10/01/16 18:27	17060-07-0	
Toluene-d8 (S)	106	%	70-130	1		10/01/16 18:27	2037-26-5	

REPORT OF LABORATORY ANALYSIS

This report shall not be reproduced, except in full,
without the written consent of Pace Analytical Services, LLC.

ANALYTICAL RESULTS

Project: KINDERMORGAN-LEWIS DRIVE, SC
Pace Project No.: 92314319

Parameters	Results	Units	Report Limit	DF	Prepared	Analyzed	CAS No.	Qual
Sample: SW03-092916 Lab ID: 92314319015 Collected: 09/29/16 11:30 Received: 09/30/16 10:20 Matrix: Water								
8260 MSV Low Level SC Analytical Method: EPA 8260								
Benzene	ND	ug/L	1.0	1		10/04/16 21:26	71-43-2	
Ethylbenzene	ND	ug/L	1.0	1		10/04/16 21:26	100-41-4	
Naphthalene	ND	ug/L	1.0	1		10/04/16 21:26	91-20-3	
Toluene	ND	ug/L	1.0	1		10/04/16 21:26	108-88-3	
Xylene (Total)	ND	ug/L	1.0	1		10/04/16 21:26	1330-20-7	
m&p-Xylene	ND	ug/L	2.0	1		10/04/16 21:26	179601-23-1	
o-Xylene	ND	ug/L	1.0	1		10/04/16 21:26	95-47-6	
Surrogates								
4-Bromofluorobenzene (S)	89	%	70-130	1		10/04/16 21:26	460-00-4	
1,2-Dichloroethane-d4 (S)	90	%	70-130	1		10/04/16 21:26	17060-07-0	
Toluene-d8 (S)	127	%	70-130	1		10/04/16 21:26	2037-26-5	

REPORT OF LABORATORY ANALYSIS

This report shall not be reproduced, except in full,
without the written consent of Pace Analytical Services, LLC.

QUALITY CONTROL DATA

Project: KINDERMORGAN-LEWIS DRIVE, SC
Pace Project No.: 92314319

QC Batch: 331431 Analysis Method: EPA 8260
QC Batch Method: EPA 8260 Analysis Description: 8260 MSV Low Level SC
Associated Lab Samples: 92314319001, 92314319002, 92314319003, 92314319004, 92314319006, 92314319007, 92314319008, 92314319013

METHOD BLANK: 1836327 Matrix: Water
Associated Lab Samples: 92314319001, 92314319002, 92314319003, 92314319004, 92314319006, 92314319007, 92314319008, 92314319013

Parameter	Units	Blank Result	Reporting Limit	Analyzed	Qualifiers
Benzene	ug/L	ND	1.0	10/01/16 17:35	
Ethylbenzene	ug/L	ND	1.0	10/01/16 17:35	
m&p-Xylene	ug/L	ND	2.0	10/01/16 17:35	
Naphthalene	ug/L	ND	1.0	10/01/16 17:35	
o-Xylene	ug/L	ND	1.0	10/01/16 17:35	
Toluene	ug/L	ND	1.0	10/01/16 17:35	
Xylene (Total)	ug/L	ND	1.0	10/01/16 17:35	
1,2-Dichloroethane-d4 (S)	%	93	70-130	10/01/16 17:35	
4-Bromofluorobenzene (S)	%	94	70-130	10/01/16 17:35	
Toluene-d8 (S)	%	116	70-130	10/01/16 17:35	

LABORATORY CONTROL SAMPLE: 1836328

Parameter	Units	Spike Conc.	LCS Result	LCS % Rec	% Rec Limits	Qualifiers
Benzene	ug/L	50	51.8	104	70-130	
Ethylbenzene	ug/L	50	51.1	102	70-130	
m&p-Xylene	ug/L	100	105	105	70-130	
Naphthalene	ug/L	50	50.7	101	70-130	
o-Xylene	ug/L	50	52.7	105	70-130	
Toluene	ug/L	50	49.3	99	70-130	
Xylene (Total)	ug/L	150	158	105	70-130	
1,2-Dichloroethane-d4 (S)	%			98	70-130	
4-Bromofluorobenzene (S)	%			104	70-130	
Toluene-d8 (S)	%			95	70-130	

MATRIX SPIKE SAMPLE: 1836330

Parameter	Units	92314218014 Result	Spike Conc.	MS Result	MS % Rec	% Rec Limits	Qualifiers
Benzene	ug/L	ND	20	22.1	110	70-130	
Ethylbenzene	ug/L	ND	20	21.5	107	70-130	
m&p-Xylene	ug/L	ND	40	43.8	109	70-130	
Naphthalene	ug/L	ND	20	20.0	100	70-130	
o-Xylene	ug/L	ND	20	21.9	109	70-130	
Toluene	ug/L	ND	20	21.8	109	70-130	
1,2-Dichloroethane-d4 (S)	%				99	70-130	
4-Bromofluorobenzene (S)	%				103	70-130	
Toluene-d8 (S)	%				97	70-130	

Results presented on this page are in the units indicated by the "Units" column except where an alternate unit is presented to the right of the result.

REPORT OF LABORATORY ANALYSIS

This report shall not be reproduced, except in full, without the written consent of Pace Analytical Services, LLC.

QUALITY CONTROL DATA

Project: KINDERMORGAN-LEWIS DRIVE, SC
Pace Project No.: 92314319

SAMPLE DUPLICATE: 1836329

Parameter	Units	92314218013 Result	Dup Result	RPD	Qualifiers
Benzene	ug/L	ND	ND		
Ethylbenzene	ug/L	ND	ND		
m&p-Xylene	ug/L	ND	ND		
Naphthalene	ug/L	ND	ND		
o-Xylene	ug/L	ND	ND		
Toluene	ug/L	ND	ND		
Xylene (Total)	ug/L	ND	ND		
1,2-Dichloroethane-d4 (S)	%	93	95		2
4-Bromofluorobenzene (S)	%	98	93		6
Toluene-d8 (S)	%	106	106		0

Results presented on this page are in the units indicated by the "Units" column except where an alternate unit is presented to the right of the result.

REPORT OF LABORATORY ANALYSIS

This report shall not be reproduced, except in full,
without the written consent of Pace Analytical Services, LLC.

QUALITY CONTROL DATA

Project: KINDERMORGAN-LEWIS DRIVE, SC
Pace Project No.: 92314319

QC Batch: 331766 Analysis Method: EPA 8260
QC Batch Method: EPA 8260 Analysis Description: 8260 MSV Low Level SC
Associated Lab Samples: 92314319005, 92314319009, 92314319010, 92314319011, 92314319012, 92314319015

METHOD BLANK: 1838156 Matrix: Water
Associated Lab Samples: 92314319005, 92314319009, 92314319010, 92314319011, 92314319012, 92314319015

Parameter	Units	Blank Result	Reporting Limit	Analyzed	Qualifiers
Benzene	ug/L	ND	1.0	10/04/16 14:01	
Ethylbenzene	ug/L	ND	1.0	10/04/16 14:01	
m&p-Xylene	ug/L	ND	2.0	10/04/16 14:01	
Naphthalene	ug/L	ND	1.0	10/04/16 14:01	
o-Xylene	ug/L	ND	1.0	10/04/16 14:01	
Toluene	ug/L	ND	1.0	10/04/16 14:01	
Xylene (Total)	ug/L	ND	1.0	10/04/16 14:01	
1,2-Dichloroethane-d4 (S)	%	94	70-130	10/04/16 14:01	
4-Bromofluorobenzene (S)	%	96	70-130	10/04/16 14:01	
Toluene-d8 (S)	%	104	70-130	10/04/16 14:01	

LABORATORY CONTROL SAMPLE: 1838157

Parameter	Units	Spike Conc.	LCS Result	LCS % Rec	% Rec Limits	Qualifiers
Benzene	ug/L	50	51.1	102	70-130	
Ethylbenzene	ug/L	50	50.0	100	70-130	
m&p-Xylene	ug/L	100	101	101	70-130	
Naphthalene	ug/L	50	43.0	86	70-130	
o-Xylene	ug/L	50	49.9	100	70-130	
Toluene	ug/L	50	46.1	92	70-130	
Xylene (Total)	ug/L	150	151	101	70-130	
1,2-Dichloroethane-d4 (S)	%			113	70-130	
4-Bromofluorobenzene (S)	%			108	70-130	
Toluene-d8 (S)	%			96	70-130	

MATRIX SPIKE SAMPLE: 1838159

Parameter	Units	92314431004 Result	Spike Conc.	MS Result	MS % Rec	% Rec Limits	Qualifiers
Benzene	ug/L	ND	20	23.1	115	70-130	
Ethylbenzene	ug/L	ND	20	21.5	107	70-130	
m&p-Xylene	ug/L	ND	40	42.6	106	70-130	
Naphthalene	ug/L	ND	20	20.0	100	70-130	
o-Xylene	ug/L	ND	20	20.9	105	70-130	
Toluene	ug/L	ND	20	21.5	108	70-130	
1,2-Dichloroethane-d4 (S)	%				100	70-130	
4-Bromofluorobenzene (S)	%				103	70-130	
Toluene-d8 (S)	%				99	70-130	

Results presented on this page are in the units indicated by the "Units" column except where an alternate unit is presented to the right of the result.

REPORT OF LABORATORY ANALYSIS

This report shall not be reproduced, except in full,
without the written consent of Pace Analytical Services, LLC.

QUALITY CONTROL DATA

Project: KINDERMORGAN-LEWIS DRIVE, SC
Pace Project No.: 92314319

SAMPLE DUPLICATE: 1838158

Parameter	Units	92314431003 Result	Dup Result	RPD	Qualifiers
Benzene	ug/L	0.68J	.73J		
Ethylbenzene	ug/L	ND	ND		
m&p-Xylene	ug/L	ND	ND		
Naphthalene	ug/L	ND	ND		
o-Xylene	ug/L	ND	ND		
Toluene	ug/L	ND	ND		
Xylene (Total)	ug/L	ND	ND		
1,2-Dichloroethane-d4 (S)	%	91	94	3	
4-Bromofluorobenzene (S)	%	92	95	3	
Toluene-d8 (S)	%	104	103	1	

Results presented on this page are in the units indicated by the "Units" column except where an alternate unit is presented to the right of the result.

REPORT OF LABORATORY ANALYSIS

This report shall not be reproduced, except in full,
without the written consent of Pace Analytical Services, LLC.

QUALIFIERS

Project: KINDERMORGAN-LEWIS DRIVE, SC
Pace Project No.: 92314319

DEFINITIONS

DF - Dilution Factor, if reported, represents the factor applied to the reported data due to dilution of the sample aliquot.

ND - Not Detected at or above adjusted reporting limit.

J - Estimated concentration above the adjusted method detection limit and below the adjusted reporting limit.

MDL - Adjusted Method Detection Limit.

PQL - Practical Quantitation Limit.

RL - Reporting Limit.

S - Surrogate

1,2-Diphenylhydrazine decomposes to and cannot be separated from Azobenzene using Method 8270. The result for each analyte is a combined concentration.

Consistent with EPA guidelines, unrounded data are displayed and have been used to calculate % recovery and RPD values.

LCS(D) - Laboratory Control Sample (Duplicate)

MS(D) - Matrix Spike (Duplicate)

DUP - Sample Duplicate

RPD - Relative Percent Difference

NC - Not Calculable.

SG - Silica Gel - Clean-Up

U - Indicates the compound was analyzed for, but not detected.

Acid preservation may not be appropriate for 2 Chloroethylvinyl ether.

A separate vial preserved to a pH of 4-5 is recommended in SW846 Chapter 4 for the analysis of Acrolein and Acrylonitrile by EPA Method 8260.

N-Nitrosodiphenylamine decomposes and cannot be separated from Diphenylamine using Method 8270. The result reported for each analyte is a combined concentration.

Pace Analytical is TNI accredited. Contact your Pace PM for the current list of accredited analytes.

TNI - The NELAC Institute.

LABORATORIES

PASI-C Pace Analytical Services - Charlotte

REPORT OF LABORATORY ANALYSIS

This report shall not be reproduced, except in full,
without the written consent of Pace Analytical Services, LLC.

QUALITY CONTROL DATA CROSS REFERENCE TABLE

Project: KINDERMORGAN-LEWIS DRIVE, SC
Pace Project No.: 92314319

Lab ID	Sample ID	QC Batch Method	QC Batch	Analytical Method	Analytical Batch
92314319001	SW11-092916	EPA 8260	331431		
92314319002	SW10-092916	EPA 8260	331431		
92314319003	FP01-092916	EPA 8260	331431		
92314319004	FP02-092916	EPA 8260	331431		
92314319005	FP03-092916	EPA 8260	331766		
92314319006	SW09-092916	EPA 8260	331431		
92314319007	SW08-092916	EPA 8260	331431		
92314319008	SW13-092916	EPA 8260	331431		
92314319009	SW02-092916	EPA 8260	331766		
92314319010	SW04-092916	EPA 8260	331766		
92314319011	SW01-092916	EPA 8260	331766		
92314319012	SW12-092916	EPA 8260	331766		
92314319013	TB-092916	EPA 8260	331431		
92314319015	SW03-092916	EPA 8260	331766		

REPORT OF LABORATORY ANALYSIS

This report shall not be reproduced, except in full,
without the written consent of Pace Analytical Services, LLC.



Document Name:
Sample Condition Upon Receipt (SCUR)
 Document No.:
F-CAR-CS-033-Rev.00

Document Revised: Sept. 21, 2016
 Page 1 of 2
 Issuing Authority:
 Pace Quality Office

Page 2 of 2 for Internal Use ONLY

Sample Condition Upon Receipt

Client Name:

CH2M

Project #:

WO# : 92314319



Courier: Commercial Fed Ex Pace UPS USPS Other: Client

Custody Seal Present? Yes No Seals Intact? Yes No

Date/Initials Person Examining Contents: 9/30/16 *EW*

Packing Material: Bubble Wrap Bubble Bags None Other: _____

Thermometer: IR Gun ID: T1505 Type of Ice: Wet Blue None Samples on ice, cooling process has begun

Correction Factor: Cooler Temp Corrected (°C): 3.0 Biological Tissue Frozen? Yes No N/A

Temp should be above freezing to 6°C

USDA Regulated Soil (N/A, water sample)

Did samples originate in a quarantine zone within the United States: CA, NY, or SC (check maps)? Yes No

Did samples originate from a foreign source (internationally, including Hawaii and Puerto Rico)? Yes No

	Comments/Discrepancy:
Chain of Custody Present? <input checked="" type="checkbox"/> Yes <input type="checkbox"/> No <input type="checkbox"/> N/A	1.
Samples Arrived within Hold Time? <input checked="" type="checkbox"/> Yes <input type="checkbox"/> No <input type="checkbox"/> N/A	2.
Short Hold Time Analysis (<72 hr.)? <input type="checkbox"/> Yes <input checked="" type="checkbox"/> No <input type="checkbox"/> N/A	3.
Rush Turn Around Time Requested? <input type="checkbox"/> Yes <input checked="" type="checkbox"/> No <input type="checkbox"/> N/A	4.
Sufficient Volume? <input checked="" type="checkbox"/> Yes <input type="checkbox"/> No <input type="checkbox"/> N/A	5.
Correct Containers Used? <input checked="" type="checkbox"/> Yes <input type="checkbox"/> No <input type="checkbox"/> N/A	6.
-Pace Containers Used? <input checked="" type="checkbox"/> Yes <input type="checkbox"/> No <input type="checkbox"/> N/A	
Containers Intact? <input checked="" type="checkbox"/> Yes <input type="checkbox"/> No <input type="checkbox"/> N/A	7.
Samples Field Filtered? <input type="checkbox"/> Yes <input type="checkbox"/> No <input checked="" type="checkbox"/> N/A	8. Note if sediment is visible in the dissolved container
Sample Labels Match COC? <input checked="" type="checkbox"/> Yes <input type="checkbox"/> No <input type="checkbox"/> N/A	9.
-Includes Date/Time/ID/Analysis Matrix: <u>LOT</u>	
All containers needing acid/base preservation have been checked and documented on page two of SCURF? <input type="checkbox"/> Yes <input type="checkbox"/> No <input checked="" type="checkbox"/> N/A	10.
Exceptions: VOA, Coliform, TOC, Oil and Grease, DRO/8015 (water) DOC, LLHg	
Samples checked for dechlorination? <input type="checkbox"/> Yes <input type="checkbox"/> No <input checked="" type="checkbox"/> N/A	11.
Headspace in VOA Vials (>5-6mm)? <input type="checkbox"/> Yes <input checked="" type="checkbox"/> No <input type="checkbox"/> N/A	12.
Trip Blank Present? <input type="checkbox"/> Yes <input type="checkbox"/> No <input type="checkbox"/> N/A	13.
Trip Blank Custody Seals Present? <input checked="" type="checkbox"/> Yes <input type="checkbox"/> No <input type="checkbox"/> N/A	
Pace Trip Blank Lot # (if purchased): _____	

CLIENT NOTIFICATION/RESOLUTION

Field Data Required? Yes No

Person Contacted: _____ Date/Time: _____
 Comments/Sample Discrepancy: _____

Project Manager SCURF Review: [Signature] Date: 9/30/16
 Project Manager SRF Review: [Signature] Date: 10/3/16

Note: Whenever there is a discrepancy affecting North Carolina compliance samples, a copy of this form will be sent to the North Carolina DEHNR Certification Office (i.e. Out of hold, incorrect preservative, out of temp, incorrect containers)

Laboratory receiving samples:

Asheville Eden Greenwood Huntersville Raleigh Mechanicsville

October 04, 2016

Bill Waldron
CH2M HILL
1717 Arch St
Suite 4400
Glenside, PA 19038

RE: Project: KINDERMORGAN LEWIS DR, SC
Pace Project No.: 92314127

Dear Bill Waldron:

Enclosed are the analytical results for sample(s) received by the laboratory on September 29, 2016. The results relate only to the samples included in this report. Results reported herein conform to the most current, applicable TNI/NELAC standards and the laboratory's Quality Assurance Manual, where applicable, unless otherwise noted in the body of the report.

If you have any questions concerning this report, please feel free to contact me.

Sincerely,



Kevin Godwin
kevin.godwin@pacelabs.com
Project Manager

Enclosures

cc: Bethany Garvey, CH2M HILL
Scott Powell, CH2M
Tom Wiley, CH2M



REPORT OF LABORATORY ANALYSIS

This report shall not be reproduced, except in full,
without the written consent of Pace Analytical Services, LLC.

CERTIFICATIONS

Project: KINDERMORGAN LEWIS DR, SC
Pace Project No.: 92314127

Charlotte Certification IDs

9800 Kinsey Ave. Ste 100, Huntersville, NC 28078
North Carolina Drinking Water Certification #: 37706
North Carolina Field Services Certification #: 5342
North Carolina Wastewater Certification #: 12

South Carolina Certification #: 99006001
Florida/NELAP Certification #: E87627
Kentucky UST Certification #: 84
Virginia/VELAP Certification #: 460221

REPORT OF LABORATORY ANALYSIS

This report shall not be reproduced, except in full,
without the written consent of Pace Analytical Services, LLC.

SAMPLE ANALYTE COUNT

Project: KINDERMORGAN LEWIS DR, SC
Pace Project No.: 92314127

Lab ID	Sample ID	Method	Analysts	Analytes Reported	Laboratory
92314127001	TB-092816	EPA 8011	HSK	2	PASI-C
		EPA 8260	GAW	12	PASI-C
92314127002	FB-092816	EPA 8011	HSK	2	PASI-C
		EPA 8260	GAW	12	PASI-C
92314127003	MW37-092816	EPA 8011	HSK	2	PASI-C
		EPA 8260	GAW	12	PASI-C
92314127004	MW38-092816-FD	EPA 8011	HSK	2	PASI-C
		EPA 8260	GAW	12	PASI-C
92314127005	MW38-092816	EPA 8011	HSK	2	PASI-C
		EPA 8260	GAW	12	PASI-C

REPORT OF LABORATORY ANALYSIS

This report shall not be reproduced, except in full,
without the written consent of Pace Analytical Services, LLC.

ANALYTICAL RESULTS

Project: KINDERMORGAN LEWIS DR, SC
Pace Project No.: 92314127

Parameters	Results	Units	Report Limit	DF	Prepared	Analyzed	CAS No.	Qual
Sample: TB-092816								
Lab ID: 92314127001 Collected: 09/28/16 00:00 Received: 09/29/16 09:45 Matrix: Water								
Analytical Method: EPA 8011 Preparation Method: EPA 8011								
8011 GCS EDB and DBCP	1,2-Dibromoethane (EDB)	ND	ug/L	0.020	1	10/03/16 15:08	10/03/16 23:30	106-93-4
Surrogates								
	1-Chloro-2-bromopropane (S)	103	%	60-140	1	10/03/16 15:08	10/03/16 23:30	301-79-56
Analytical Method: EPA 8260								
8260 MSV Low Level SC	Benzene	ND	ug/L	1.0	1	10/01/16 17:52	71-43-2	
	1,2-Dichloroethane	ND	ug/L	1.0	1	10/01/16 17:52	107-06-2	
	Ethylbenzene	ND	ug/L	1.0	1	10/01/16 17:52	100-41-4	
	Methyl-tert-butyl ether	ND	ug/L	1.0	1	10/01/16 17:52	1634-04-4	
	Naphthalene	ND	ug/L	1.0	1	10/01/16 17:52	91-20-3	
	Toluene	ND	ug/L	1.0	1	10/01/16 17:52	108-88-3	
	Xylene (Total)	ND	ug/L	1.0	1	10/01/16 17:52	1330-20-7	
	m&p-Xylene	ND	ug/L	2.0	1	10/01/16 17:52	179601-23-1	
	o-Xylene	ND	ug/L	1.0	1	10/01/16 17:52	95-47-6	
Surrogates								
	4-Bromofluorobenzene (S)	95	%	70-130	1	10/01/16 17:52	460-00-4	
	1,2-Dichloroethane-d4 (S)	94	%	70-130	1	10/01/16 17:52	17060-07-0	
	Toluene-d8 (S)	109	%	70-130	1	10/01/16 17:52	2037-26-5	

REPORT OF LABORATORY ANALYSIS

This report shall not be reproduced, except in full,
without the written consent of Pace Analytical Services, LLC.

ANALYTICAL RESULTS

Project: KINDERMORGAN LEWIS DR, SC
Pace Project No.: 92314127

Parameters	Results	Units	Report Limit	DF	Prepared	Analyzed	CAS No.	Qual
Sample: FB-092816								
Lab ID: 92314127002								
Collected: 09/28/16 13:05 Received: 09/29/16 09:45 Matrix: Water								
8011 GCS EDB and DBCP								
Analytical Method: EPA 8011 Preparation Method: EPA 8011								
1,2-Dibromoethane (EDB)	ND	ug/L	0.020	1	10/03/16 15:08	10/03/16 23:50	106-93-4	
Surrogates								
1-Chloro-2-bromopropane (S)	101	%	60-140	1	10/03/16 15:08	10/03/16 23:50	301-79-56	
8260 MSV Low Level SC								
Analytical Method: EPA 8260								
Benzene	ND	ug/L	1.0	1		10/01/16 18:09	71-43-2	
1,2-Dichloroethane	ND	ug/L	1.0	1		10/01/16 18:09	107-06-2	
Ethylbenzene	ND	ug/L	1.0	1		10/01/16 18:09	100-41-4	
Methyl-tert-butyl ether	ND	ug/L	1.0	1		10/01/16 18:09	1634-04-4	
Naphthalene	ND	ug/L	1.0	1		10/01/16 18:09	91-20-3	
Toluene	ND	ug/L	1.0	1		10/01/16 18:09	108-88-3	
Xylene (Total)	ND	ug/L	1.0	1		10/01/16 18:09	1330-20-7	
m&p-Xylene	ND	ug/L	2.0	1		10/01/16 18:09	179601-23-1	
o-Xylene	ND	ug/L	1.0	1		10/01/16 18:09	95-47-6	
Surrogates								
4-Bromofluorobenzene (S)	92	%	70-130	1		10/01/16 18:09	460-00-4	
1,2-Dichloroethane-d4 (S)	95	%	70-130	1		10/01/16 18:09	17060-07-0	
Toluene-d8 (S)	104	%	70-130	1		10/01/16 18:09	2037-26-5	

REPORT OF LABORATORY ANALYSIS

This report shall not be reproduced, except in full,
without the written consent of Pace Analytical Services, LLC.

ANALYTICAL RESULTS

Project: KINDERMORGAN LEWIS DR, SC
Pace Project No.: 92314127

Sample: MW37-092816	Lab ID: 92314127003	Collected: 09/28/16 13:20	Received: 09/29/16 09:45	Matrix: Water				
Parameters	Results	Units	Report Limit	DF	Prepared	Analyzed	CAS No.	Qual
8011 GCS EDB and DBCP								
Analytical Method: EPA 8011 Preparation Method: EPA 8011								
1,2-Dibromoethane (EDB)	ND	ug/L	0.019	1	10/03/16 15:08	10/04/16 00:11	106-93-4	
Surrogates								
1-Chloro-2-bromopropane (S)	107	%	60-140	1	10/03/16 15:08	10/04/16 00:11	301-79-56	
8260 MSV Low Level SC								
Analytical Method: EPA 8260								
Benzene	ND	ug/L	1.0	1		10/01/16 23:00	71-43-2	
1,2-Dichloroethane	ND	ug/L	1.0	1		10/01/16 23:00	107-06-2	
Ethylbenzene	ND	ug/L	1.0	1		10/01/16 23:00	100-41-4	
Methyl-tert-butyl ether	ND	ug/L	1.0	1		10/01/16 23:00	1634-04-4	
Naphthalene	ND	ug/L	1.0	1		10/01/16 23:00	91-20-3	
Toluene	ND	ug/L	1.0	1		10/01/16 23:00	108-88-3	
Xylene (Total)	ND	ug/L	1.0	1		10/01/16 23:00	1330-20-7	
m&p-Xylene	ND	ug/L	2.0	1		10/01/16 23:00	179601-23-1	
o-Xylene	ND	ug/L	1.0	1		10/01/16 23:00	95-47-6	
Surrogates								
4-Bromofluorobenzene (S)	92	%	70-130	1		10/01/16 23:00	460-00-4	
1,2-Dichloroethane-d4 (S)	93	%	70-130	1		10/01/16 23:00	17060-07-0	
Toluene-d8 (S)	110	%	70-130	1		10/01/16 23:00	2037-26-5	

REPORT OF LABORATORY ANALYSIS

This report shall not be reproduced, except in full,
without the written consent of Pace Analytical Services, LLC.

ANALYTICAL RESULTS

Project: KINDERMORGAN LEWIS DR, SC
Pace Project No.: 92314127

Parameters	Results	Units	Report Limit	DF	Prepared	Analyzed	CAS No.	Qual
Sample: MW38-092816-FD								
Lab ID: 92314127004								
Collected: 09/28/16 14:10 Received: 09/29/16 09:45 Matrix: Water								
8011 GCS EDB and DBCP								
Analytical Method: EPA 8011 Preparation Method: EPA 8011								
1,2-Dibromoethane (EDB)	ND	ug/L	0.020	1	10/03/16 15:08	10/04/16 00:31	106-93-4	
Surrogates								
1-Chloro-2-bromopropane (S)	105	%	60-140	1	10/03/16 15:08	10/04/16 00:31	301-79-56	
8260 MSV Low Level SC								
Analytical Method: EPA 8260								
Benzene	ND	ug/L	1.0	1		10/01/16 23:17	71-43-2	
1,2-Dichloroethane	ND	ug/L	1.0	1		10/01/16 23:17	107-06-2	
Ethylbenzene	ND	ug/L	1.0	1		10/01/16 23:17	100-41-4	
Methyl-tert-butyl ether	3.3	ug/L	1.0	1		10/01/16 23:17	1634-04-4	
Naphthalene	ND	ug/L	1.0	1		10/01/16 23:17	91-20-3	
Toluene	ND	ug/L	1.0	1		10/01/16 23:17	108-88-3	
Xylene (Total)	ND	ug/L	1.0	1		10/01/16 23:17	1330-20-7	
m&p-Xylene	ND	ug/L	2.0	1		10/01/16 23:17	179601-23-1	
o-Xylene	ND	ug/L	1.0	1		10/01/16 23:17	95-47-6	
Surrogates								
4-Bromofluorobenzene (S)	91	%	70-130	1		10/01/16 23:17	460-00-4	
1,2-Dichloroethane-d4 (S)	91	%	70-130	1		10/01/16 23:17	17060-07-0	
Toluene-d8 (S)	123	%	70-130	1		10/01/16 23:17	2037-26-5	

REPORT OF LABORATORY ANALYSIS

This report shall not be reproduced, except in full,
without the written consent of Pace Analytical Services, LLC.

ANALYTICAL RESULTS

Project: KINDERMORGAN LEWIS DR, SC
Pace Project No.: 92314127

Parameters	Results	Units	Report Limit	DF	Prepared	Analyzed	CAS No.	Qual
Sample: MW38-092816								
Lab ID: 92314127005 Collected: 09/28/16 14:05 Received: 09/29/16 09:45 Matrix: Water								
Analytical Method: EPA 8011 Preparation Method: EPA 8011								
8011 GCS EDB and DBCP	1,2-Dibromoethane (EDB)	ND	ug/L	0.020	1	10/03/16 15:08	10/04/16 00:52	106-93-4
Surrogates								
	1-Chloro-2-bromopropane (S)	102	%	60-140	1	10/03/16 15:08	10/04/16 00:52	301-79-56
Analytical Method: EPA 8260								
8260 MSV Low Level SC	Benzene	ND	ug/L	1.0	1	10/01/16 23:35	71-43-2	
	1,2-Dichloroethane	ND	ug/L	1.0	1	10/01/16 23:35	107-06-2	
	Ethylbenzene	ND	ug/L	1.0	1	10/01/16 23:35	100-41-4	
	Methyl-tert-butyl ether	3.7	ug/L	1.0	1	10/01/16 23:35	1634-04-4	
	Naphthalene	ND	ug/L	1.0	1	10/01/16 23:35	91-20-3	
	Toluene	ND	ug/L	1.0	1	10/01/16 23:35	108-88-3	
	Xylene (Total)	ND	ug/L	1.0	1	10/01/16 23:35	1330-20-7	
	m&p-Xylene	ND	ug/L	2.0	1	10/01/16 23:35	179601-23-1	
	o-Xylene	ND	ug/L	1.0	1	10/01/16 23:35	95-47-6	
Surrogates								
	4-Bromofluorobenzene (S)	97	%	70-130	1	10/01/16 23:35	460-00-4	
	1,2-Dichloroethane-d4 (S)	99	%	70-130	1	10/01/16 23:35	17060-07-0	
	Toluene-d8 (S)	115	%	70-130	1	10/01/16 23:35	2037-26-5	

REPORT OF LABORATORY ANALYSIS

This report shall not be reproduced, except in full,
without the written consent of Pace Analytical Services, LLC.

QUALITY CONTROL DATA

Project: KINDERMORGAN LEWIS DR, SC
Pace Project No.: 92314127

QC Batch: 331431 Analysis Method: EPA 8260
QC Batch Method: EPA 8260 Analysis Description: 8260 MSV Low Level SC
Associated Lab Samples: 92314127001, 92314127002, 92314127003, 92314127004, 92314127005

METHOD BLANK: 1836327 Matrix: Water
Associated Lab Samples: 92314127001, 92314127002, 92314127003, 92314127004, 92314127005

Parameter	Units	Blank Result	Reporting Limit	Analyzed	Qualifiers
1,2-Dichloroethane	ug/L	ND	1.0	10/01/16 17:35	
Benzene	ug/L	ND	1.0	10/01/16 17:35	
Ethylbenzene	ug/L	ND	1.0	10/01/16 17:35	
m&p-Xylene	ug/L	ND	2.0	10/01/16 17:35	
Methyl-tert-butyl ether	ug/L	ND	1.0	10/01/16 17:35	
Naphthalene	ug/L	ND	1.0	10/01/16 17:35	
o-Xylene	ug/L	ND	1.0	10/01/16 17:35	
Toluene	ug/L	ND	1.0	10/01/16 17:35	
Xylene (Total)	ug/L	ND	1.0	10/01/16 17:35	
1,2-Dichloroethane-d4 (S)	%	93	70-130	10/01/16 17:35	
4-Bromofluorobenzene (S)	%	94	70-130	10/01/16 17:35	
Toluene-d8 (S)	%	116	70-130	10/01/16 17:35	

LABORATORY CONTROL SAMPLE: 1836328

Parameter	Units	Spike Conc.	LCS Result	LCS % Rec	% Rec Limits	Qualifiers
1,2-Dichloroethane	ug/L	50	49.5	99	70-130	
Benzene	ug/L	50	51.8	104	70-130	
Ethylbenzene	ug/L	50	51.1	102	70-130	
m&p-Xylene	ug/L	100	105	105	70-130	
Methyl-tert-butyl ether	ug/L	50	59.5	119	70-130	
Naphthalene	ug/L	50	50.7	101	70-130	
o-Xylene	ug/L	50	52.7	105	70-130	
Toluene	ug/L	50	49.3	99	70-130	
Xylene (Total)	ug/L	150	158	105	70-130	
1,2-Dichloroethane-d4 (S)	%			98	70-130	
4-Bromofluorobenzene (S)	%			104	70-130	
Toluene-d8 (S)	%			95	70-130	

MATRIX SPIKE SAMPLE: 1836330

Parameter	Units	92314218014 Result	Spike Conc.	MS Result	MS % Rec	% Rec Limits	Qualifiers
1,2-Dichloroethane	ug/L	ND	20	20.2	100	70-130	
Benzene	ug/L	ND	20	22.1	110	70-130	
Ethylbenzene	ug/L	ND	20	21.5	107	70-130	
m&p-Xylene	ug/L	ND	40	43.8	109	70-130	
Methyl-tert-butyl ether	ug/L	ND	20	22.8	114	70-130	
Naphthalene	ug/L	ND	20	20.0	100	70-130	

Results presented on this page are in the units indicated by the "Units" column except where an alternate unit is presented to the right of the result.

REPORT OF LABORATORY ANALYSIS

This report shall not be reproduced, except in full,
without the written consent of Pace Analytical Services, LLC.

QUALITY CONTROL DATA

Project: KINDERMORGAN LEWIS DR, SC
Pace Project No.: 92314127

MATRIX SPIKE SAMPLE: 1836330

Parameter	Units	92314218014 Result	Spike Conc.	MS Result	MS % Rec	% Rec Limits	Qualifiers
o-Xylene	ug/L	ND	20	21.9	109	70-130	
Toluene	ug/L	ND	20	21.8	109	70-130	
1,2-Dichloroethane-d4 (S)	%				99	70-130	
4-Bromofluorobenzene (S)	%				103	70-130	
Toluene-d8 (S)	%				97	70-130	

SAMPLE DUPLICATE: 1836329

Parameter	Units	92314218013 Result	Dup Result	RPD	Qualifiers
1,2-Dichloroethane	ug/L	ND	ND		
Benzene	ug/L	ND	ND		
Ethylbenzene	ug/L	ND	ND		
m&p-Xylene	ug/L	ND	ND		
Methyl-tert-butyl ether	ug/L	ND	ND		
Naphthalene	ug/L	ND	ND		
o-Xylene	ug/L	ND	ND		
Toluene	ug/L	ND	ND		
Xylene (Total)	ug/L	ND	ND		
1,2-Dichloroethane-d4 (S)	%	93	95	2	
4-Bromofluorobenzene (S)	%	98	93	6	
Toluene-d8 (S)	%	106	106	0	

Results presented on this page are in the units indicated by the "Units" column except where an alternate unit is presented to the right of the result.

REPORT OF LABORATORY ANALYSIS

This report shall not be reproduced, except in full,
without the written consent of Pace Analytical Services, LLC.

QUALITY CONTROL DATA

Project: KINDERMORGAN LEWIS DR, SC
Pace Project No.: 92314127

QC Batch: 331477 Analysis Method: EPA 8011
QC Batch Method: EPA 8011 Analysis Description: GCS 8011 EDB DBCP
Associated Lab Samples: 92314127001, 92314127002, 92314127003, 92314127004, 92314127005

METHOD BLANK: 1836490 Matrix: Water
Associated Lab Samples: 92314127001, 92314127002, 92314127003, 92314127004, 92314127005

Parameter	Units	Blank Result	Reporting Limit	Analyzed	Qualifiers
1,2-Dibromoethane (EDB)	ug/L	ND	0.019	10/03/16 16:19	
1-Chloro-2-bromopropane (S)	%	100	60-140	10/03/16 16:19	

LABORATORY CONTROL SAMPLE & LCSD: 1836491

Parameter	Units	1836492								
		Spike Conc.	LCS Result	LCSD Result	LCS % Rec	LCSD % Rec	% Rec Limits	RPD	Max RPD	Qualifiers
1,2-Dibromoethane (EDB)	ug/L	.25	0.30	0.30	121	121	60-140	0	20	
1-Chloro-2-bromopropane (S)	%				100	100	60-140			

SAMPLE DUPLICATE: 1836495

Parameter	Units	92314021015		RPD	Qualifiers
		Result	Dup Result		
1,2-Dibromoethane (EDB)	ug/L	ND	ND		
1-Chloro-2-bromopropane (S)	%	117	91	25	

Results presented on this page are in the units indicated by the "Units" column except where an alternate unit is presented to the right of the result.

REPORT OF LABORATORY ANALYSIS

This report shall not be reproduced, except in full,
without the written consent of Pace Analytical Services, LLC.

QUALIFIERS

Project: KINDERMORGAN LEWIS DR, SC
Pace Project No.: 92314127

DEFINITIONS

DF - Dilution Factor, if reported, represents the factor applied to the reported data due to dilution of the sample aliquot.

ND - Not Detected at or above adjusted reporting limit.

J - Estimated concentration above the adjusted method detection limit and below the adjusted reporting limit.

MDL - Adjusted Method Detection Limit.

PQL - Practical Quantitation Limit.

RL - Reporting Limit.

S - Surrogate

1,2-Diphenylhydrazine decomposes to and cannot be separated from Azobenzene using Method 8270. The result for each analyte is a combined concentration.

Consistent with EPA guidelines, unrounded data are displayed and have been used to calculate % recovery and RPD values.

LCS(D) - Laboratory Control Sample (Duplicate)

MS(D) - Matrix Spike (Duplicate)

DUP - Sample Duplicate

RPD - Relative Percent Difference

NC - Not Calculable.

SG - Silica Gel - Clean-Up

U - Indicates the compound was analyzed for, but not detected.

Acid preservation may not be appropriate for 2 Chloroethylvinyl ether.

A separate vial preserved to a pH of 4-5 is recommended in SW846 Chapter 4 for the analysis of Acrolein and Acrylonitrile by EPA Method 8260.

N-Nitrosodiphenylamine decomposes and cannot be separated from Diphenylamine using Method 8270. The result reported for each analyte is a combined concentration.

Pace Analytical is TNI accredited. Contact your Pace PM for the current list of accredited analytes.

TNI - The NELAC Institute.

LABORATORIES

PASI-C Pace Analytical Services - Charlotte

REPORT OF LABORATORY ANALYSIS

This report shall not be reproduced, except in full,
without the written consent of Pace Analytical Services, LLC.

QUALITY CONTROL DATA CROSS REFERENCE TABLE

Project: KINDERMORGAN LEWIS DR, SC
Pace Project No.: 92314127

Lab ID	Sample ID	QC Batch Method	QC Batch	Analytical Method	Analytical Batch
92314127001	TB-092816	EPA 8011	331477	EPA 8011	331549
92314127002	FB-092816	EPA 8011	331477	EPA 8011	331549
92314127003	MW37-092816	EPA 8011	331477	EPA 8011	331549
92314127004	MW38-092816-FD	EPA 8011	331477	EPA 8011	331549
92314127005	MW38-092816	EPA 8011	331477	EPA 8011	331549
92314127001	TB-092816	EPA 8260	331431		
92314127002	FB-092816	EPA 8260	331431		
92314127003	MW37-092816	EPA 8260	331431		
92314127004	MW38-092816-FD	EPA 8260	331431		
92314127005	MW38-092816	EPA 8260	331431		

REPORT OF LABORATORY ANALYSIS

This report shall not be reproduced, except in full,
without the written consent of Pace Analytical Services, LLC.



Page 2 of 2 for Internal Use ONLY

Sample Condition Upon Receipt

Client Name: **CH2M**

Project #:

WO# : 92314127



Courier: Commercial Fed Ex Pace UPS USPS Other: Client

Custody Seal Present? Yes No Seals Intact? Yes No

Date/Initials Person Examining Contents: **BV 9/29**

Packing Material: Bubble Wrap Bubble Bags None Other: _____

Thermometer: IR Gun ID: **T1505** Type of Ice: Wet Blue None Samples on ice, cooling process has begun

Correction Factor: Cooler Temp Corrected (°C): **6.0** Biological Tissue Frozen? Yes No N/A

Temp should be above freezing to 6°C
 USDA Regulated Soil (N/A, water sample)

Did samples originate in a quarantine zone within the United States: CA, NY, or SC (check maps)? Yes No

Did samples originate from a foreign source (internationally, including Hawaii and Puerto Rico)? Yes No

		Comments/Discrepancy:
Chain of Custody Present?	<input checked="" type="checkbox"/> Yes <input type="checkbox"/> No <input type="checkbox"/> N/A	1.
Samples Arrived within Hold Time?	<input checked="" type="checkbox"/> Yes <input type="checkbox"/> No <input type="checkbox"/> N/A	2.
Short Hold Time Analysis (<72 hr.)?	<input type="checkbox"/> Yes <input checked="" type="checkbox"/> No <input type="checkbox"/> N/A	3.
Rush Turn Around Time Requested?	<input type="checkbox"/> Yes <input checked="" type="checkbox"/> No <input type="checkbox"/> N/A	4.
Sufficient Volume?	<input checked="" type="checkbox"/> Yes <input type="checkbox"/> No <input type="checkbox"/> N/A	5.
Correct Containers Used?	<input checked="" type="checkbox"/> Yes <input type="checkbox"/> No <input type="checkbox"/> N/A	6.
-Pace Containers Used?	<input checked="" type="checkbox"/> Yes <input type="checkbox"/> No <input type="checkbox"/> N/A	
Containers Intact?	<input checked="" type="checkbox"/> Yes <input type="checkbox"/> No <input type="checkbox"/> N/A	7.
Samples Field Filtered?	<input type="checkbox"/> Yes <input checked="" type="checkbox"/> No <input type="checkbox"/> N/A	8. Note if sediment is visible in the dissolved container
Sample Labels Match COC?	<input type="checkbox"/> Yes <input checked="" type="checkbox"/> No <input type="checkbox"/> N/A	9. <i>Received 2 more trip blank.</i>
-Includes Date/Time/ID/Analysis Matrix: WT		
All containers needing acid/base preservation have been checked and documented on page two of SCURF?	<input type="checkbox"/> Yes <input type="checkbox"/> No <input checked="" type="checkbox"/> N/A	10.
Exceptions: VOA Coliform, TOC, Oil and Grease, DRO/8015 (water) DOC, LLHg		
Samples checked for dechlorination?	<input type="checkbox"/> Yes <input type="checkbox"/> No <input checked="" type="checkbox"/> N/A	11.
Headspace in VOA Vials (>5-6mm)?	<input type="checkbox"/> Yes <input checked="" type="checkbox"/> No <input type="checkbox"/> N/A	12.
Trip Blank Present?	<input checked="" type="checkbox"/> Yes <input type="checkbox"/> No <input type="checkbox"/> N/A	13.
Trip Blank Custody Seals Present?	<input checked="" type="checkbox"/> Yes <input type="checkbox"/> No <input type="checkbox"/> N/A	
Pace Trip Blank Lot # (if purchased):		

CLIENT NOTIFICATION/RESOLUTION

Field Data Required? Yes No

Person Contacted: _____ Date/Time: _____
 Comments/Sample Discrepancy: _____

Project Manager SCURF Review: *[Signature]* Date: **9/30/16**

Project Manager SRF Review: *[Signature]* Date: **9/30/16**

Note: Whenever there is a discrepancy affecting North Carolina compliance samples, a copy of this form will be sent to the North Carolina DEHNR Certification Office (i.e. Out of hold, incorrect preservative, out of temp, incorrect containers)

Laboratory receiving samples:
 Asheville Eden Greenwood Huntersville Raleigh Mechanicsville

