



South Carolina Department of Health and Environmental Control

Plantation Pipe Line Lewis Drive Release Belton, SC

May 22, 2017

Mihir Mehta, P.E

Underground Storage Tank Management Division Director
Bureau of Land and Waste Management

Presentation

- **Today's Presentation**
 - **Surface Water Sampling Event for Broadway Lake & its Tributaries**
 - **Status of the Cleanup**
 - **Future Cleanup Plans and the Path Forward**
- ***Conversation about Regulatory Aspects of the Pipe Line Operations and Inspections***
 - ***Potential future meeting***

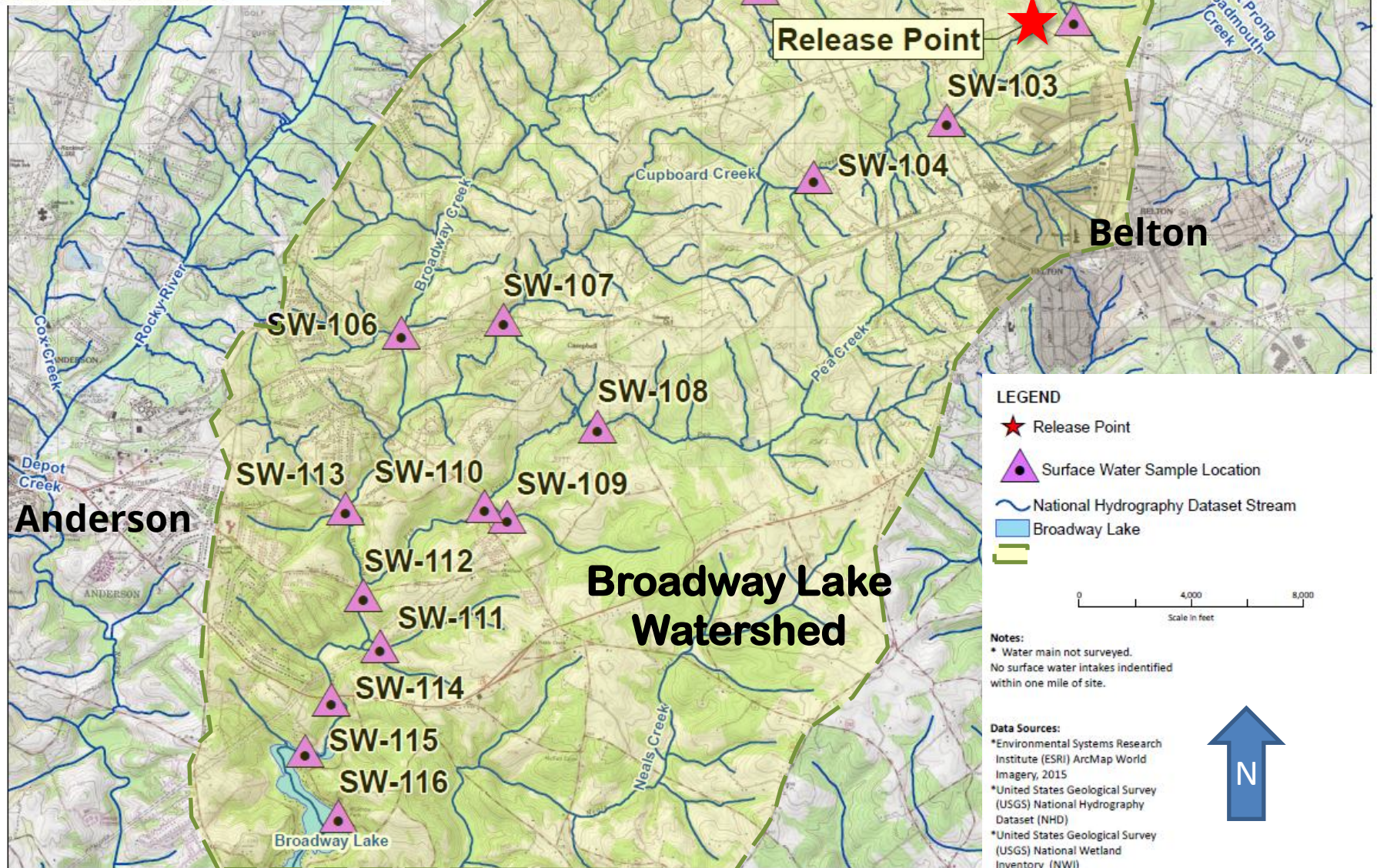
Surface Water Sampling Event

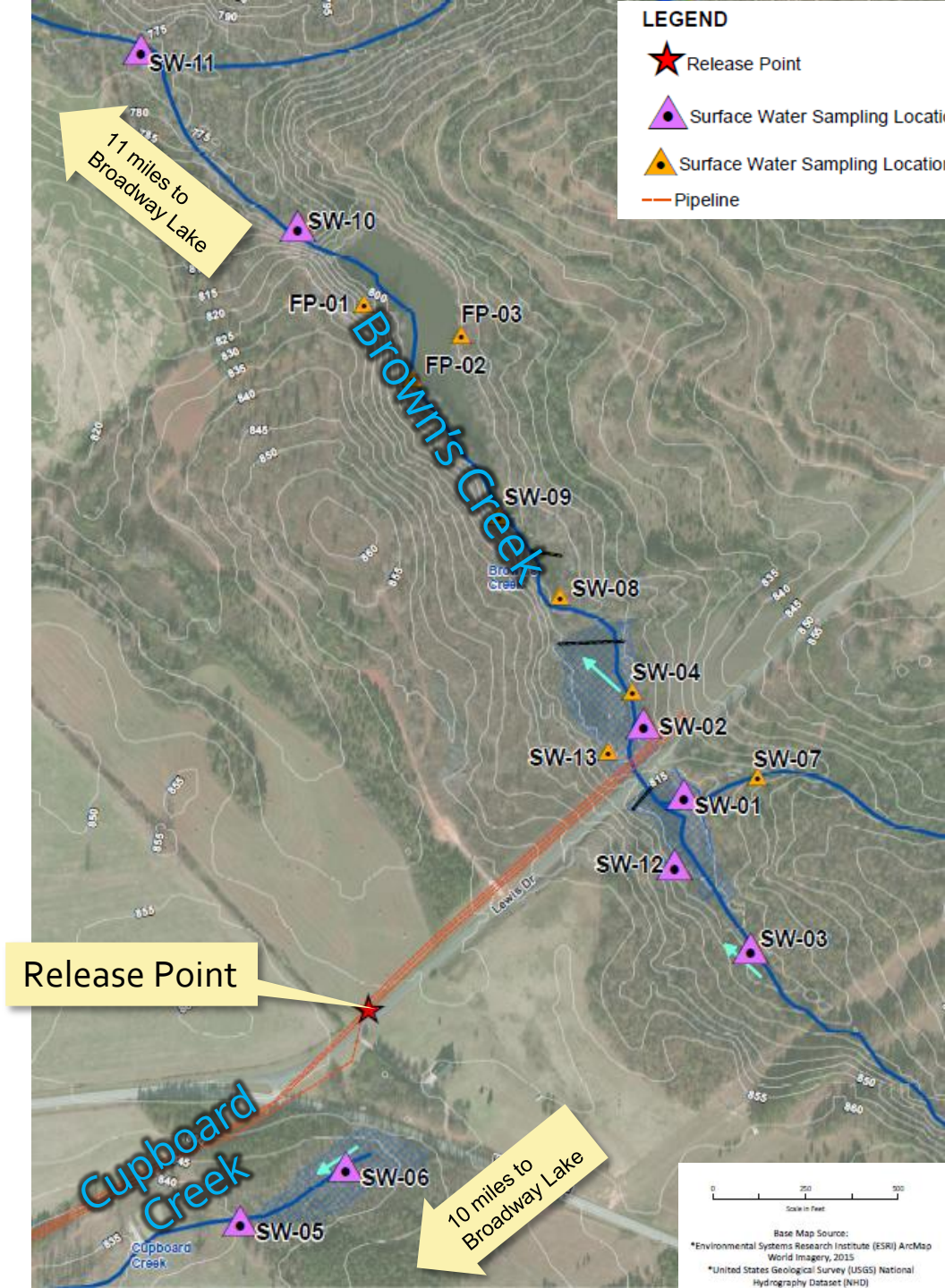
In response to community concerns, on February 28, 2017, DHEC collected surface water samples from **23 locations** from the site to Broadway Lake.



Anderson County, Plantation Pipe Line, and DHEC sent samples to different laboratories.







LEGEND

-  Release Point
-  Surface Water Sampling Location
-  Surface Water Sampling Location
-  Pipeline
-  Flow Direction of Creek
-  Topographic Contour (5-foot Interval)
-  National Hydrography Dataset Stream
-  Delineated Wetland
-  Beaver Dam

Release Point

11 miles to Broadway Lake

10 miles to Broadway Lake



Base Map Source:
 *Environmental Systems Research Institute (ESRI) ArcMap
 World Imagery, 2015
 *United States Geological Survey (USGS) National
 Hydrography Dataset (NHD)

Surface Water Sampling Results

Results were consistent from all three labs.

No detects of petroleum constituents above risk based screening levels at **any** of the locations except for three near the release site in Brown's Creek at SW-1, SW-2, and SW-12 (consistent with previous data).



SW- 116 Broadway Lake



SW-108 Pea Creek

Petroleum Product Recovery - Status

Petroleum product recovery is continuing

6,861 gallons of petroleum product recovered between February 1, 2017 and May 11, 2017

221,706 gallons of petroleum product recovered using vacuum extraction as of May 11, 2017



Corrective Action - Status

Startup Plan for Surface Water Protection Measures approved

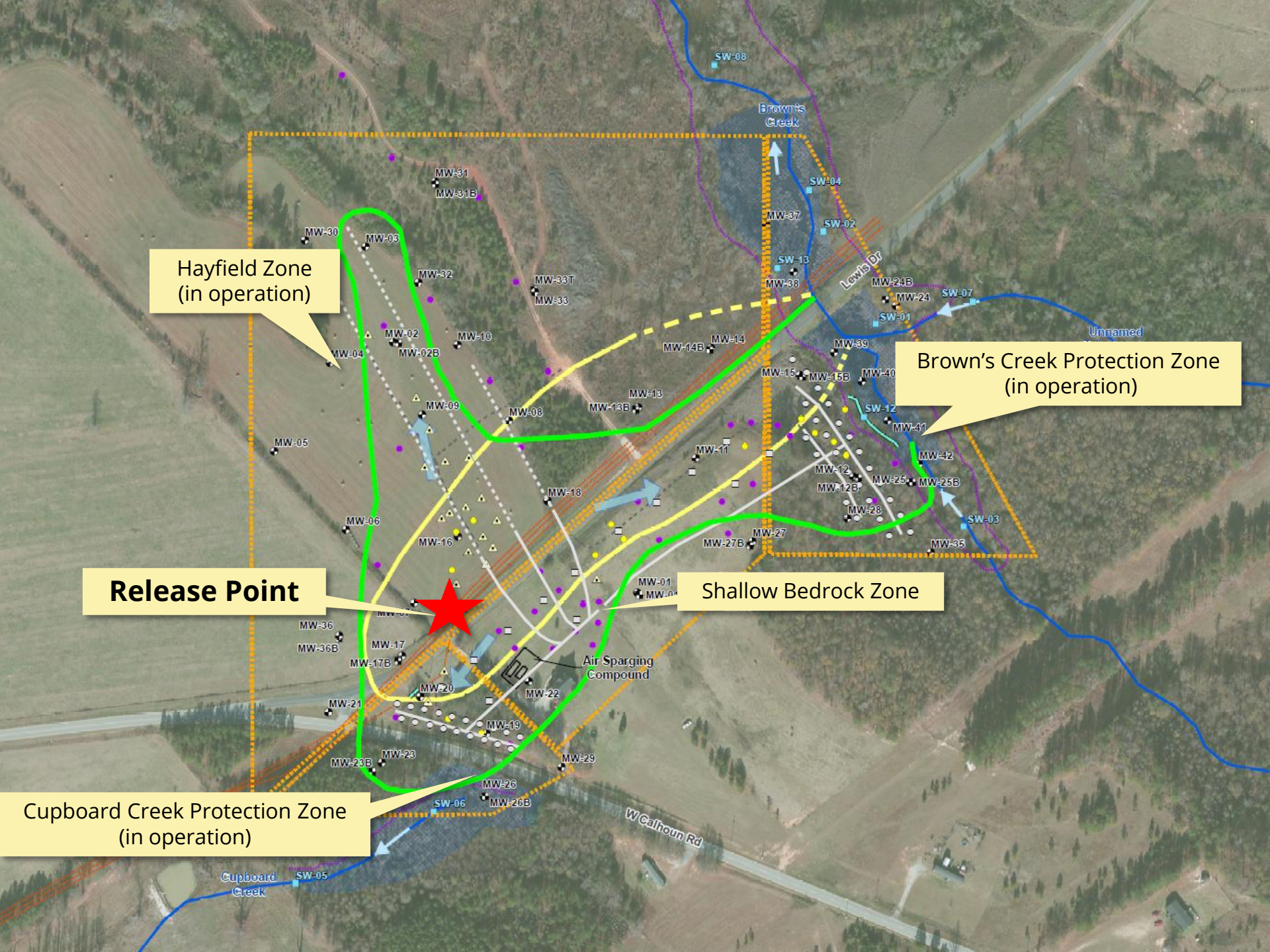
Vertical biosparging wells up-gradient of Brown's Creek and Cupboard Creek began operating

Two stream aerators in Brown's Creek began operating

Air monitoring conducted with no Issues as part of this start up

Absorbent mats to address seeps in the area of Brown's Creek were Installed





Hayfield Zone
(in operation)

Brown's Creek Protection Zone
(in operation)

Release Point

Shallow Bedrock Zone

Cupboard Creek Protection Zone
(in operation)

Corrective Action - Status

The Corrective Action Plan Addendum received conditional DHEC approval

Horizontal biosparging wells in the Hayfield area began operation



Biosparge Control Building- Interior



Biosparge Control Building- Street View

Future Cleanup Plans

Revised Corrective Action Plan Addendum

Shallow Bedrock Zone Biosparging Pilot Study Plan

Recharge Study for product recovery

Proposal to Install Additional Wells to Define the Extent of Contamination



Path Forward

- Periodic meetings with Plantation Pipe Line
- Community meetings to provide updates on the cleanup
- Continued oversight of petroleum removal, monitoring, and operation of the groundwater cleanup system

Information regarding the site can be viewed at:

www.scdhec.gov/LewisDrivePipelineSpill

CONTACT US

Bureau of Land and Waste Management
2600 Bull Street
Columbia, SC 29201

Mihir Mehta, P.E., Director
UST Management Division
(803) 898-0623

Stay Connected