

# Air Monitoring Summary Tables

This table summarizes monitoring data collected using DHEC monitors and EPA's Viper wireless remote monitoring system.

**Project Name:** H<sub>2</sub>S in South Carolina



**From:** 6/29/21  
12:00 AM

**To:** 6/29/21  
11:59 PM

Tom Stevens Rd							
Instrument	Analyte	ATSDR MRL Exceedance?	Number of Readings	Number of Detections	Concentration Range	Period Average	ATSDR MRL
SPM Flex 1	H2S	No	27423	2601	0 - 4 ppb	0.27 ppb	70 ppb

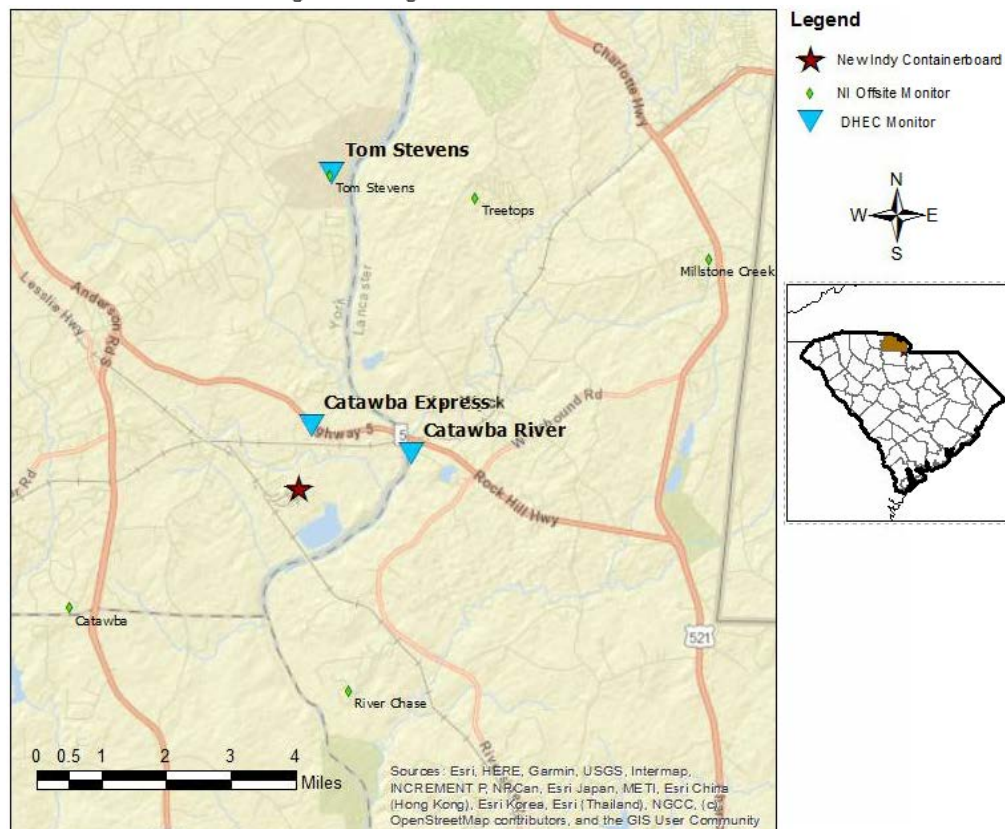
Catawba River							
Instrument	Analyte	ATSDR MRL Exceedance?	Number of Readings	Number of Detections	Concentration Range	Period Average	ATSDR MRL
SPM Flex 2	H2S	No	26447	341	0 - 1 ppb	0.01 ppb	70 ppb

Catawba Express							
Instrument	Analyte	ATSDR MRL Exceedance?	Number of Readings	Number of Detections	Concentration Range	Period Average	ATSDR MRL
SPM Flex 3	H2S	No	15568	15253	0 - 92 ppb	8.98 ppb	70 ppb

**Notes:**

Hydrogen sulfide concentrations presented in this data summary table are converted from parts per million, the instrument readout units, to parts per billion.

- ATSDR MRL Agency for Toxic Substances and Disease Registry Minimal Risk Level - Acute Exposure (<14 days)
- H<sub>2</sub>S Hydrogen Sulfide
- hr Hour
- ppb Parts per billion
- MRL Exceedance Defines if the 24-hr TWA exceeded the MRL at any time during the period of this report
- SPM Single Point Monitor
- TWA Time Weighted Average

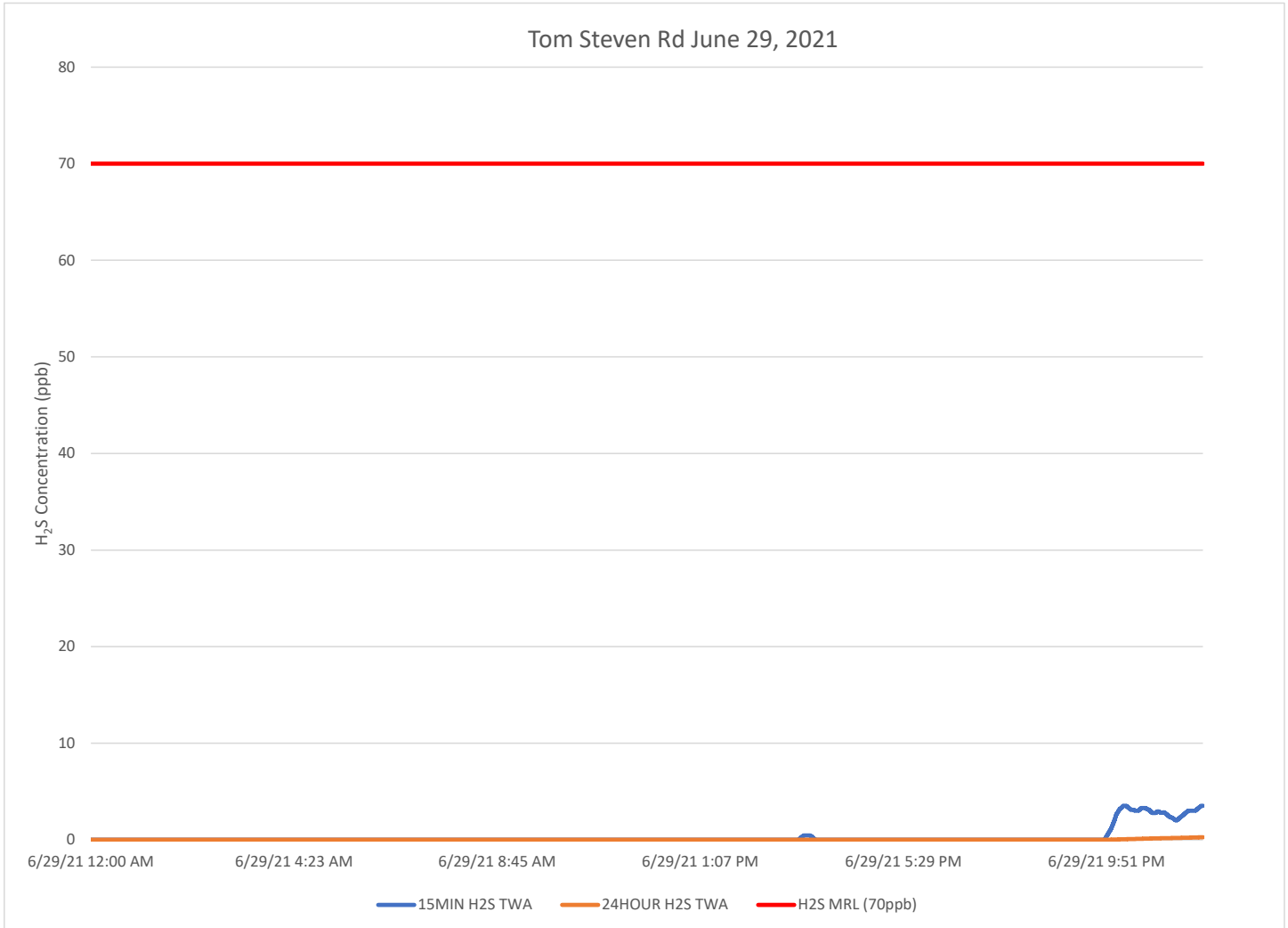


# H<sub>2</sub>S in South Carolina

## Hydrogen Sulfide 15-min and 24-hr Time Weighted Graphs

The prevailing wind for this reporting period was out of the East-southeast to south.

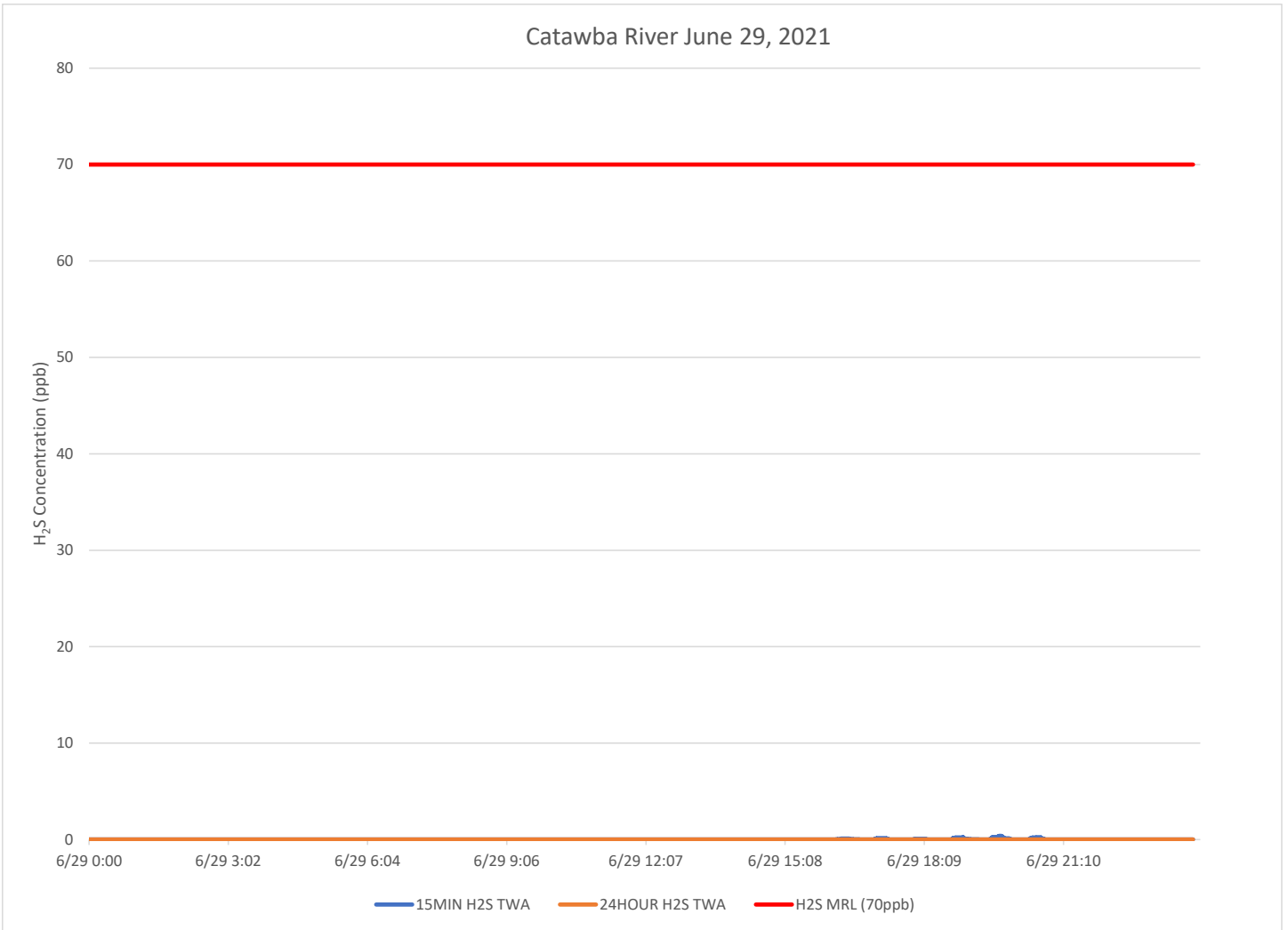
An additional monitor was installed on SC 5 at the Catawba Express approximately 9:50 AM 6/29/21.



### Notes:

H<sub>2</sub>S – Hydrogen Sulfide  
MIN – Minute  
MRL – Minimal Risk Level  
ppb – Parts per billion

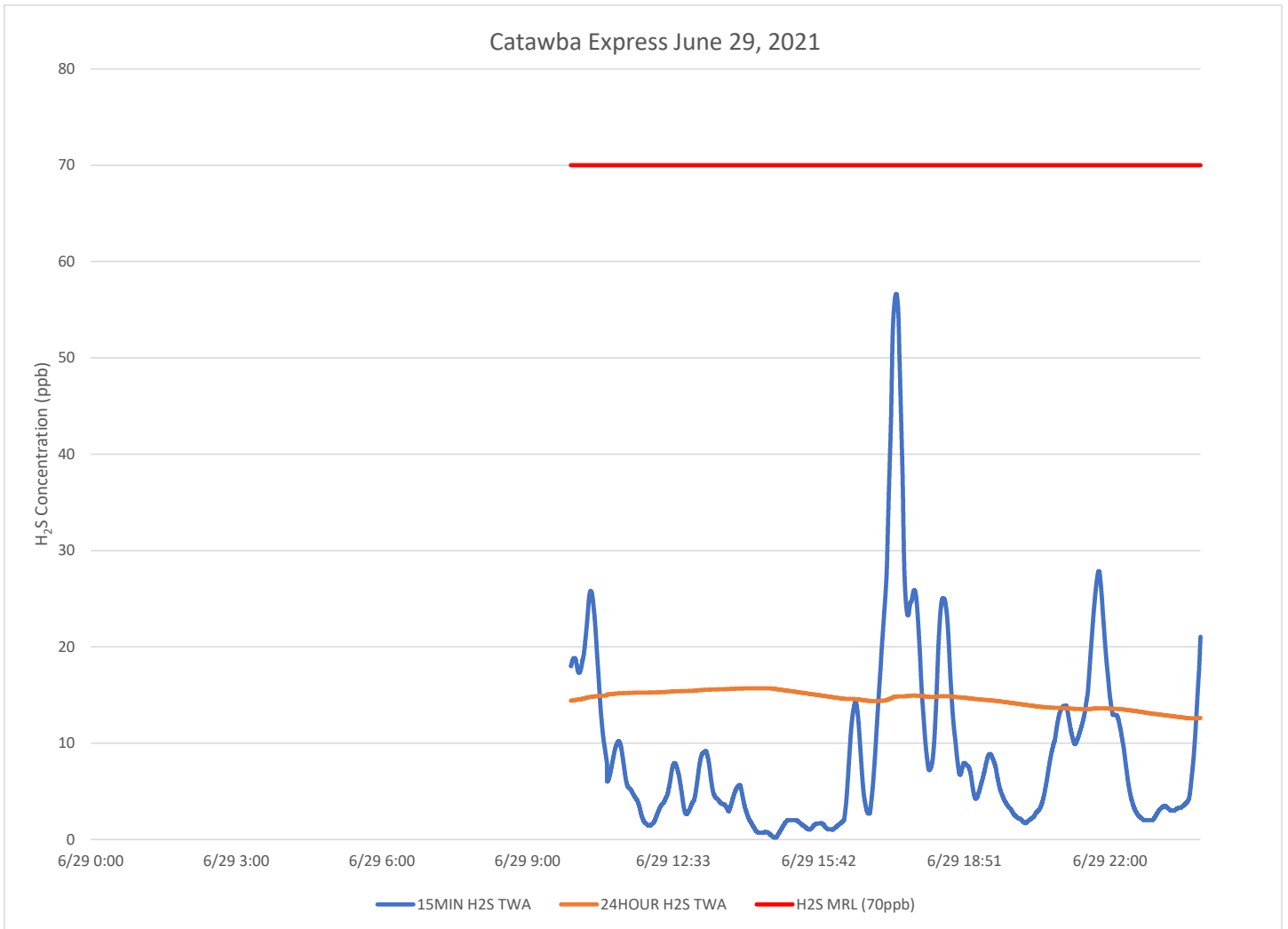
### Catawba River June 29, 2021



**Notes:**

H<sub>2</sub>S – Hydrogen Sulfide  
MIN – Minute  
MRL – Minimal Risk Level  
ppb – Parts per billion

The Catawba Express monitor was installed approximately 9:50 AM on 6/29/21



Notes:

H<sub>2</sub>S – Hydrogen Sulfide  
MIN – Minute  
MRL – Minimal Risk Level  
ppb – Parts per billion