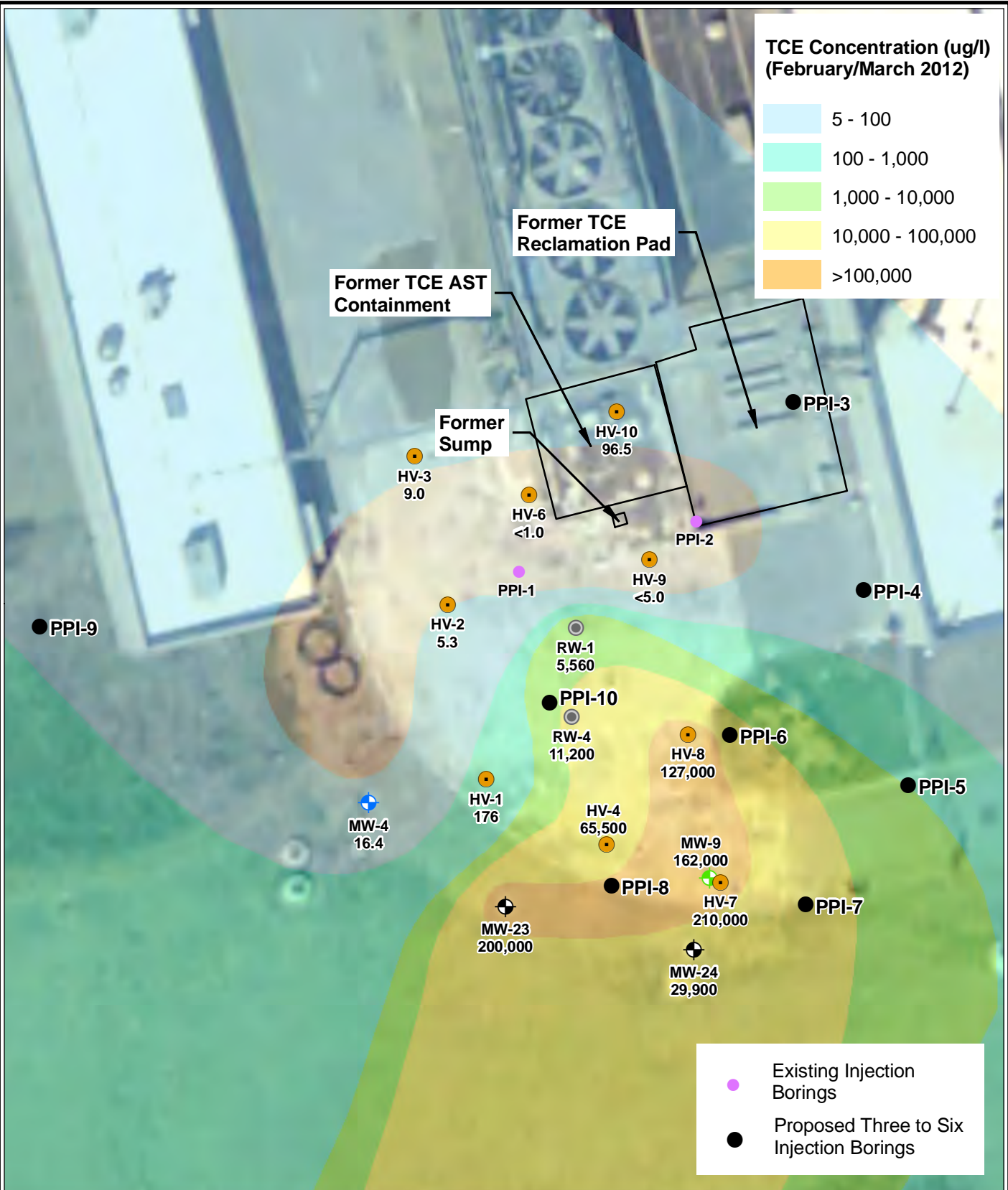
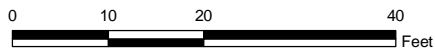


**TCE Concentration (ug/l)  
(February/March 2012)**



● Existing Injection Borings

● Proposed Three to Six Injection Borings



Reference:  
2008 Aerial photograph from Greenville County GIS.



DRAWN BY: MAL 2/13/2013  
CHECKED BY: LAS  
APPROVED BY: GYM

Wednesday, February 13, 2013, 09:59:54 AM  
C:\GIS\PROJECTS\Hitachi\03-084\Maps\FS\FIG-14 new.mxd

**DHEC PROPOSED PLAN  
FIGURE 5  
ALTERNATIVES GW4A,  
GW4B, AND GW8: SOURCE  
AREA TREATMENT  
Former Hitachi Electronic  
Devices (USA)  
575 Mauldin Rd, Greenville, SC**